



Carol Waters, Greg Adragna, Tammy Crannie
and Rodolfo Martinez

Wyatt Chapel Community Cemetery Prairie View, Texas.

Rice University
ESCI 515, Summer 2010

Team members:

Martinez, Jose Luciano
Mendoza, Omar
Patino, Hernando
Ramirez, Antonio



Wyatt Chapel Community Cemetery Prairie View, Texas

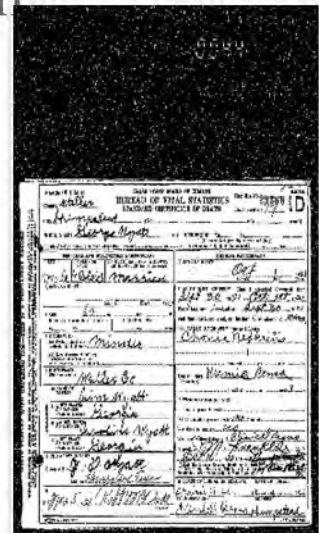


Findings

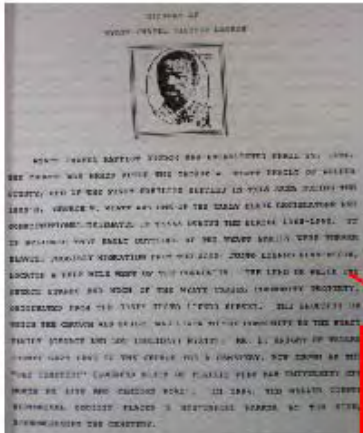
- Early historic events in Prairie View, Texas
- Research on 33 graves, 8 marked & 15 unmarked graves at the old cemetery.
- Lifestyles: Texas slaves / descendants, and military from WWI & WWII.
- Genealogy
- A more diverse community

• Revised cemetery Findings

Dates of Birth and Death found on death certificates and old census

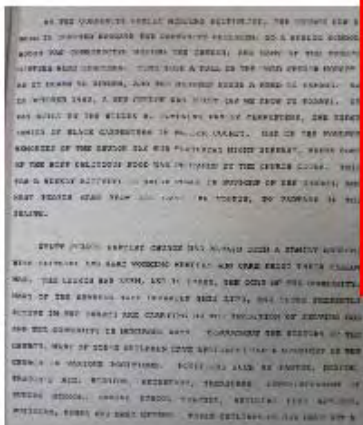
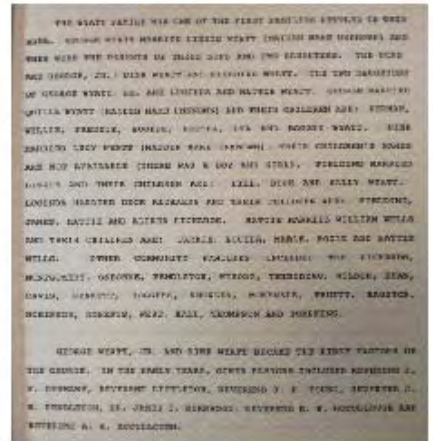


Wyatt Chapel Church 's History



*“Ella Mae Davis, a feme sole,
from Waller County, TX, sold to
Wyatt Chapel Baptist Church one
and one-half acres in the Justo
Liendo five league grant...”*

A History of Waller County, TX. Published by The
Waller County Historical survey committee, 1973.



THE LAND ON WHICH THE
CHURCH STANDS AND MUCH OF THE WYATT CHAPEL COMMUNITY PROPERTY,
ORIGINATED FROM THE JOSE' JUSTO LIENDO SURVEY. THE PROPERTY ON
WHICH THE CHURCH WAS BUILT, WAS GIVEN TO THE COMMUNITY BY THE WYATT
FAMILY (GEORGE AND LOU (HOLIDAY) WYATT).

The Old Cemetery

MR. B. KNIGHT OF WALLER
COUNTY GAVE LAND TO THE CHURCH FOR A CEMETERY, NOW KNOWN AS THE
"OLD CEMETERY" (LOCATED NORTH OF PRAIRIE VIEW A&M UNIVERSITY OFF
NORTH FM 1098 AND CAMERON ROAD).

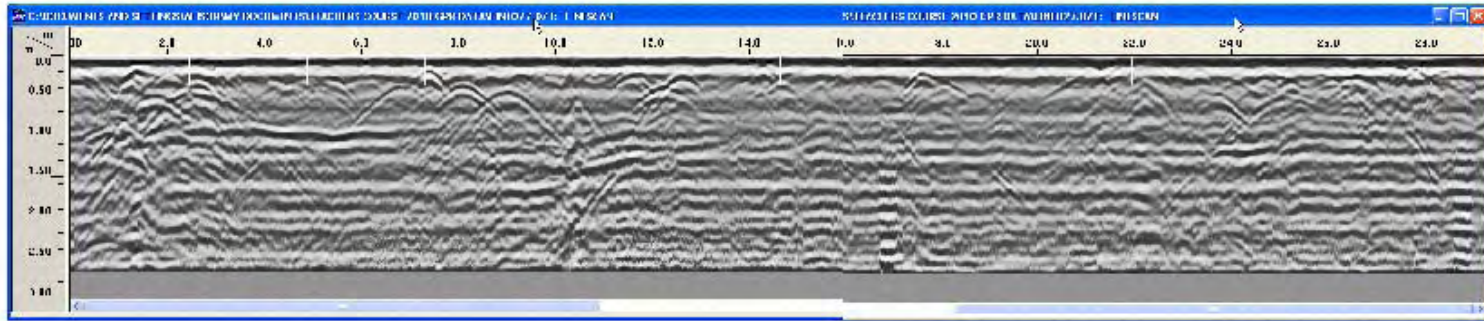


Dates and names Found

Name	Last name	BORN	DEATH	
Albert	Collins	5/5/1832	7/5/1922	
G E	Brown		12/27/1950	
Eslie	Bailey	3/31/1892	5/19/1948	
James	Ducksworth	11/11/1900	9/3/1959	
Luther B	Felder	5/19/1926	4/24/1948	
Milo Jr.	Wilson	7/22/1892	11/8/1953	
Mamie	Wyatt	Jan 1862		
Carrie	Williams	1886	6/22/1918	
Theadore	Anderson	11/30/1907	6/4/1939	

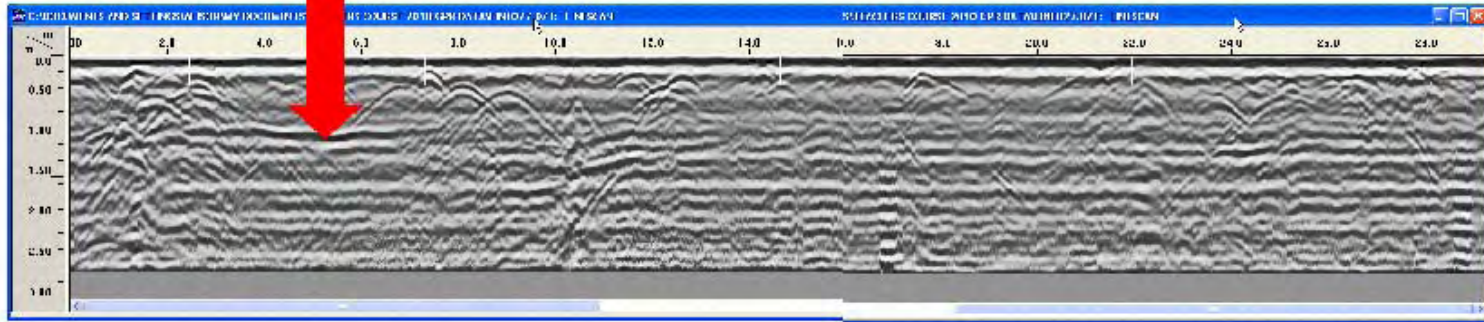
New findings are indicated in red text.

GPR Line # 27

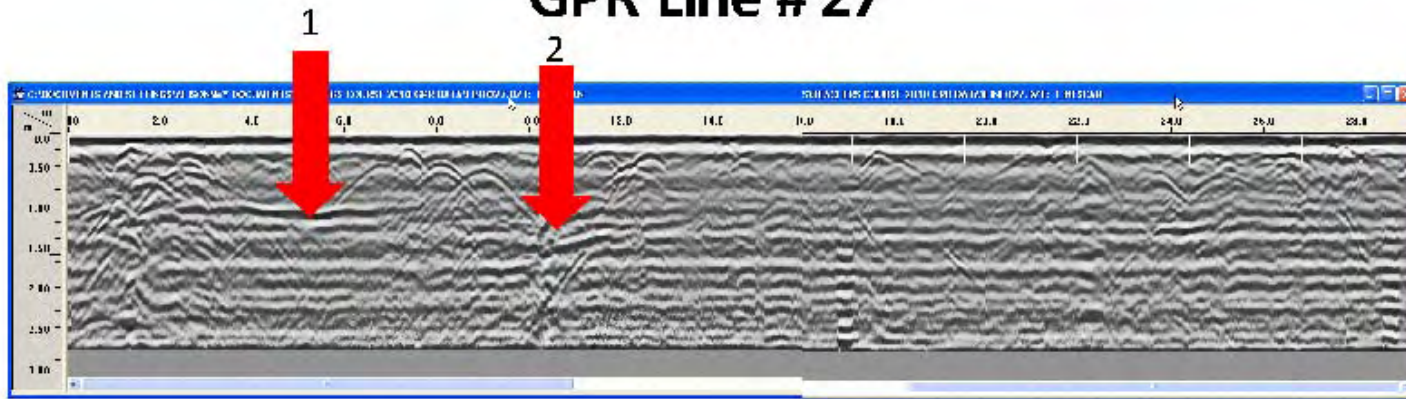


GPR Line # 27

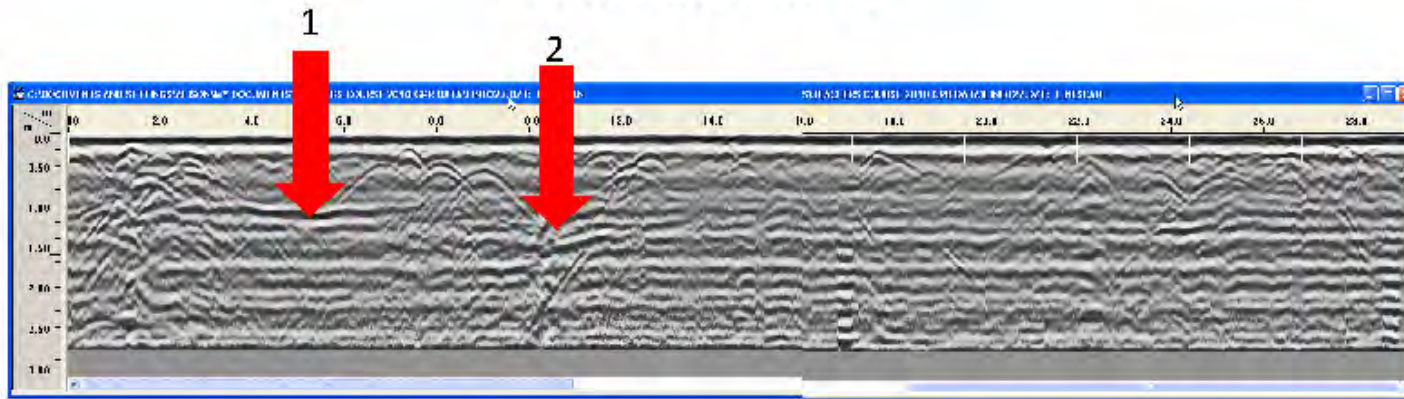
1



GPR Line # 27



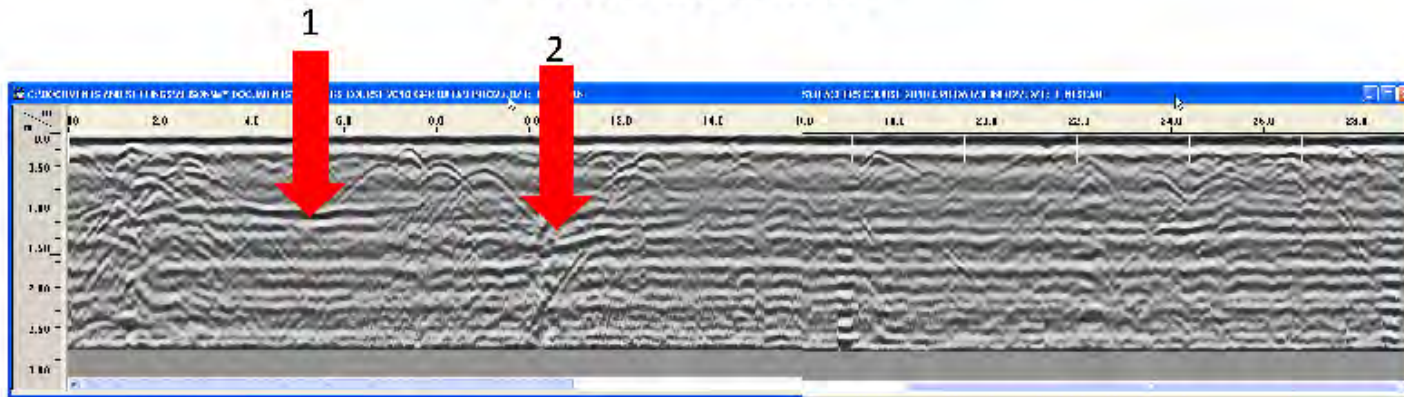
GPR Line # 27



Anomalies:

1. From points 2.5 to 6.5 and 1 m deep. It shows a change in density for a distance of about 4 m. Our interpretation is that this anomaly could be an old pathway made of rock, shells, or even compacted clay.

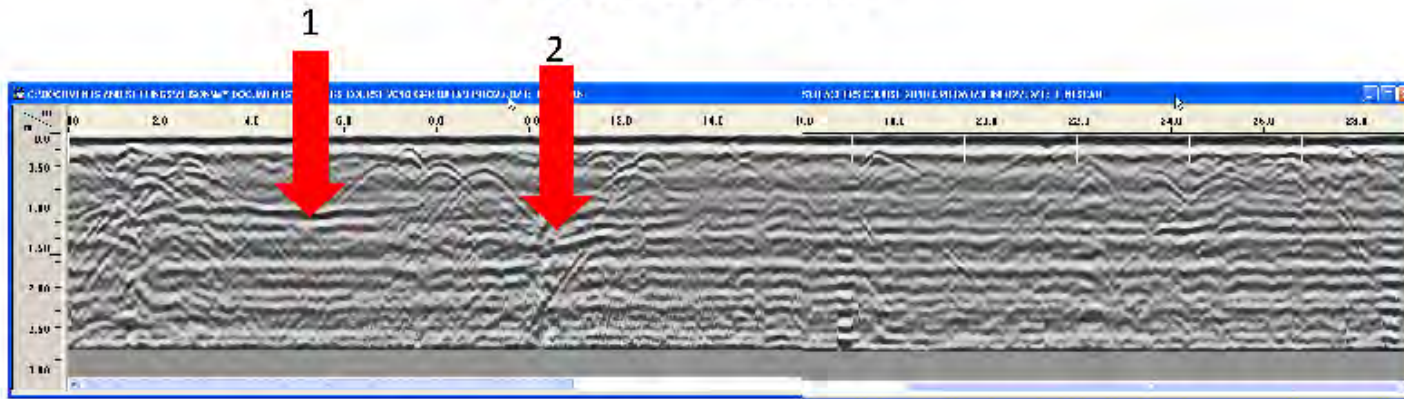
GPR Line # 27



Anomalies:

1. From points 2.5 to 6.5 and 1 m deep. It shows a change in density for a distance of about 4 m. Our interpretation is that this anomaly could be an old pathway made of rock, shells, or even compacted clay.
2. At a distance of 11 m at 1.5 m deep, we can see another anomaly that could be interpreted as a possible burial site. Further investigation is recommended.

GPR Line # 27

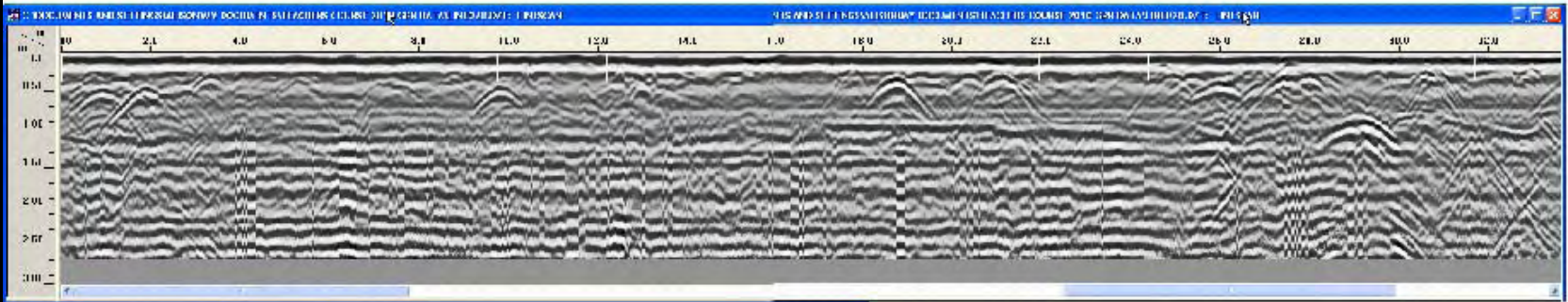


Anomalies:

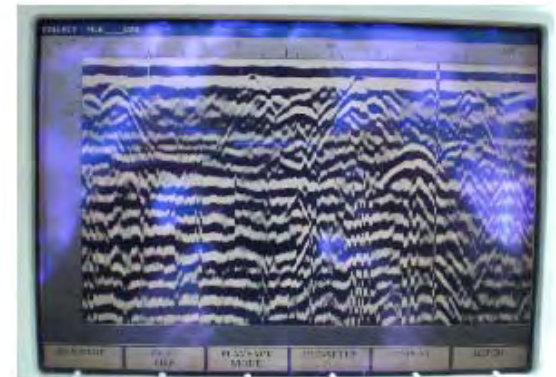
1. From points 2.5 to 6.5 and 1 m deep. It shows a change in density for a distance of about 4 m. Our interpretation is that this anomaly could be an old pathway made of rock, shells, or even compacted clay.
2. At a distance of 11 m at 1.5 m deep, we can see another anomaly that could be interpreted as a possible burial site. Further investigation is recommended.

The interpretation of these GPR lines is difficult because the great amount of roots and other pattern disruptions on the surface along the line. Deeper anomalies are not easy to observe.

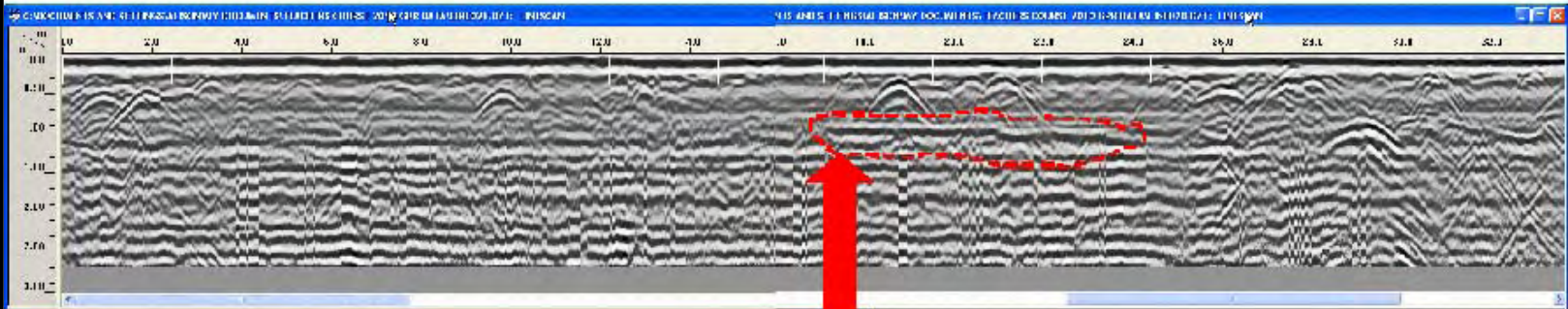
GPR Line # 28



Actual view from
the Ground Penetrating
Radar screen - GPR



GPR Line # 28

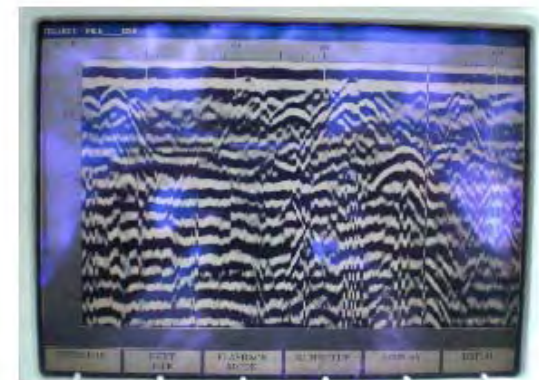


1

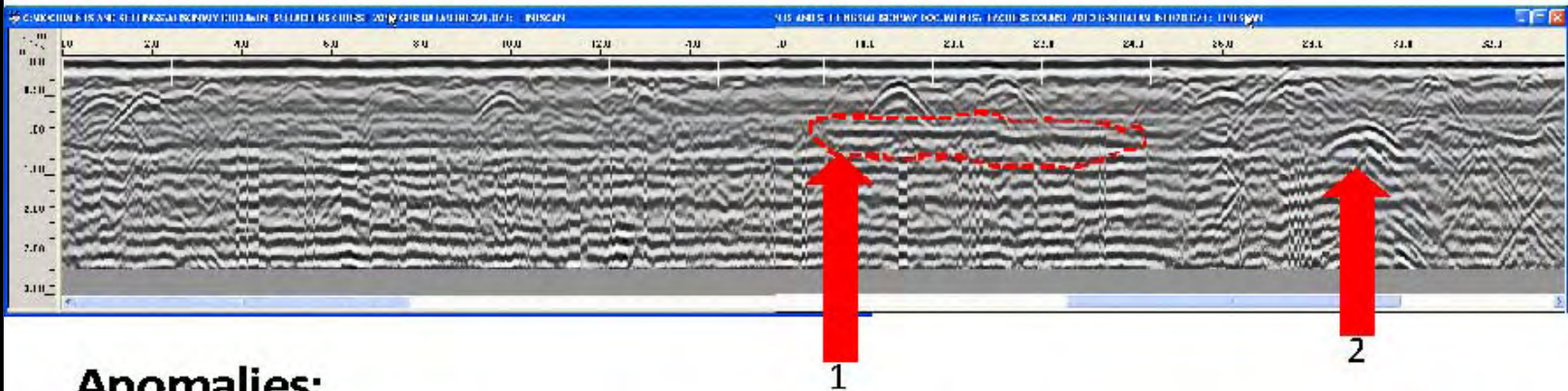
Anomalies:

1. From points 17 to 24 at 1m deep, we can see, again, a layer of a denser material that stretches for about 7m. This could be due to the existence of a layer of rock, shells or compacted clay. Further investigation is recommended.

Actual view from
the Ground Penetrating
Radar screen - GPR



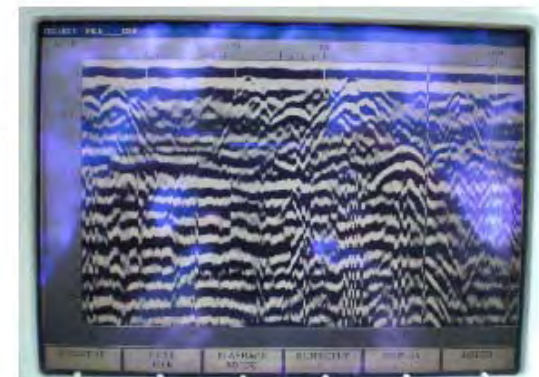
GPR Line # 28



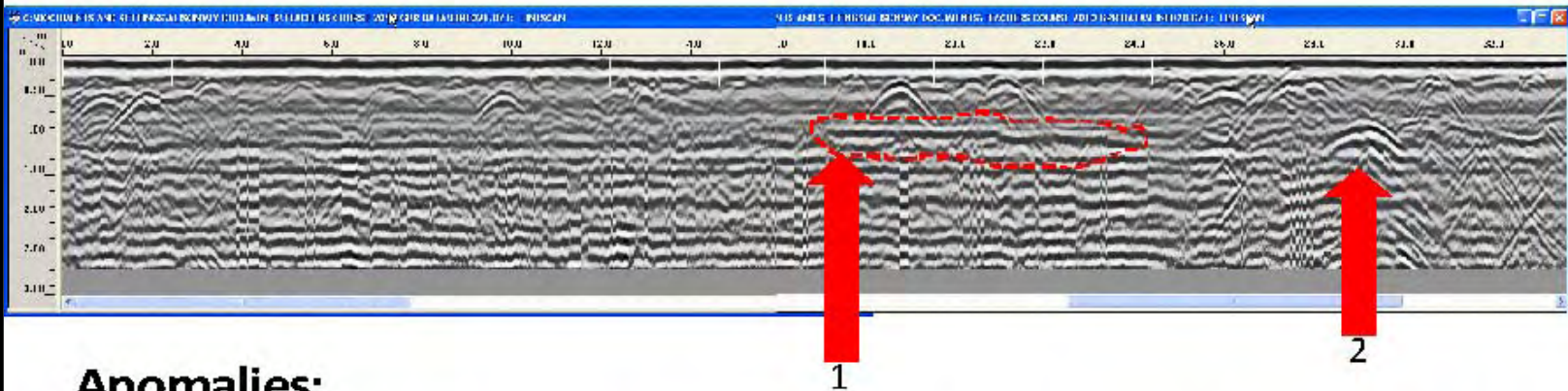
Anomalies:

1. From points 17 to 24 at 1m deep, we can see, again, a layer of a denser material that stretches for about 7m. This could be due to the existence of a layer of rock, shells or compacted clay. Further investigation is recommended.
2. At a distance of 29 m at 1.0m deep, we can see another anomaly that also could be interpreted as a possible burial site. However, it is too close to the surface. Further investigation is recommended.

Actual view from
the Ground Penetrating
Radar screen - GPR



GPR Line # 28

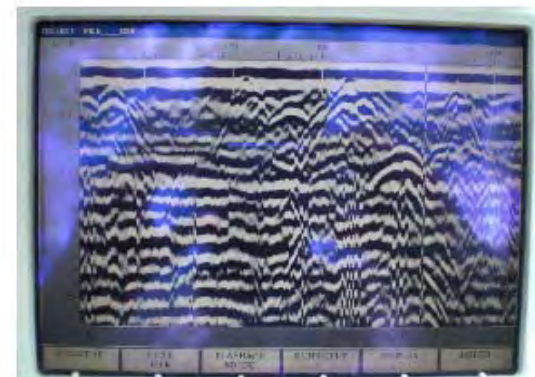


Anomalies:

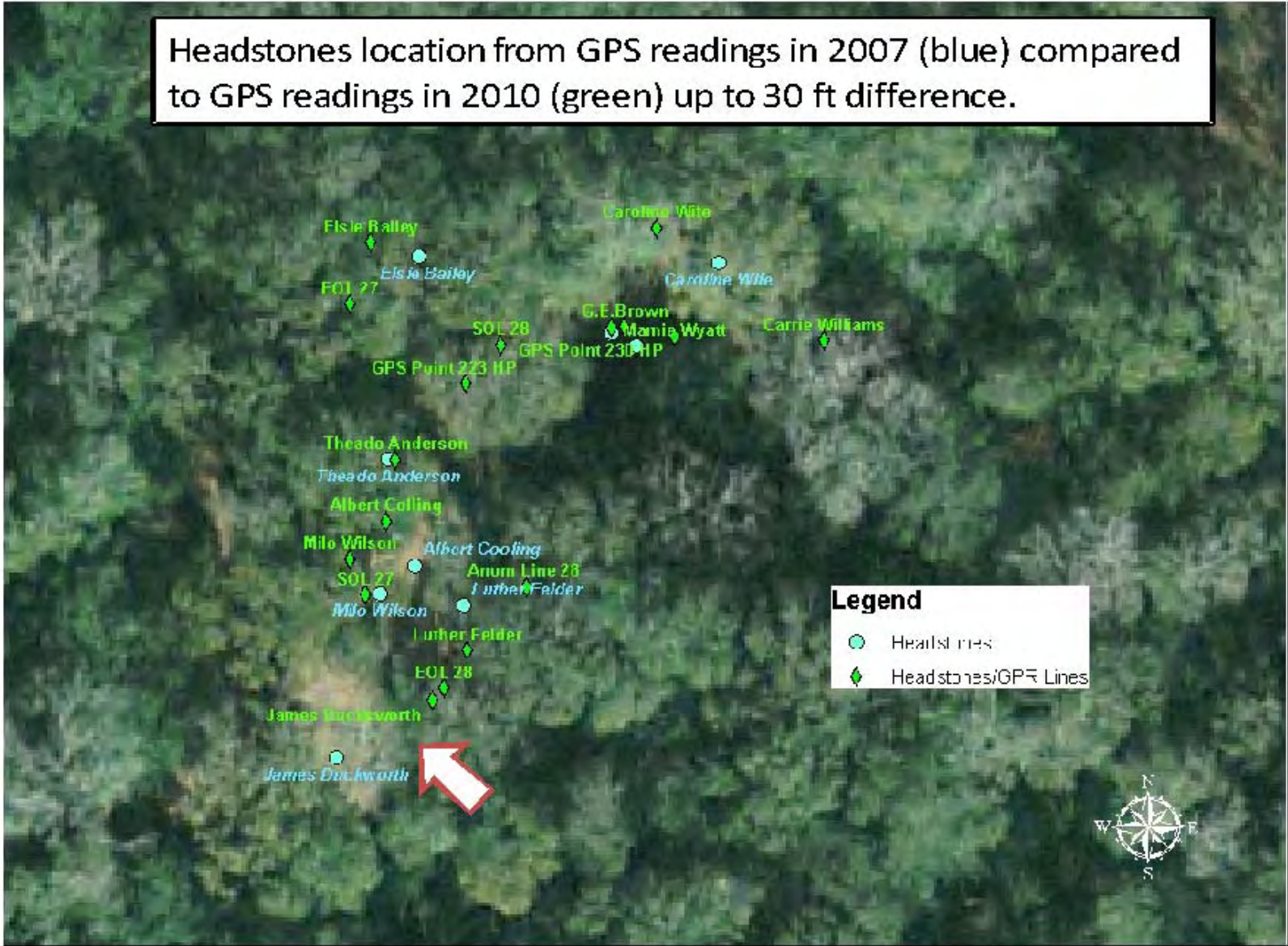
1. From points 17 to 24 at 1m deep, we can see, again, a layer of a denser material that stretches for about 7m. This could be due to the existence of a layer of rock, shells or compacted clay. Further investigation is recommended.
2. At a distance of 29 m at 1.0m deep, we can see another anomaly that also could be interpreted as a possible burial site. However, it is too close to the surface. Further investigation is recommended.

The interpretation of these GPR lines is hard due to the great number of roots present on the surface along the line. Deeper anomalies were not easy to observe.

Actual view from the Ground Penetrating Radar screen - GPR



Headstones location from GPS readings in 2007 (blue) compared to GPS readings in 2010 (green) up to 30 ft difference.





Headstones location from GPS readings in 2007 (blue) compared to Total Station measurements in 2010 (yellow) up to 33 ft difference.



Headstones location from GPS readings in 2010 (green) compared to Total Station measurements in 2010 (yellow) up to 10 ft difference.



Legend

-  TS observations
-  Headstones/GFR Lines



GPS and Total Station Measurements of Headstones in the Old Cemetery

- We have a new set of precise locations of the headstones using the Total Station (TS) equipment.
- Most of the readings taken with the GPS units in 2010 are very close (from 0 to 10 ft) to those taken with the TS.
- Some GPS readings from 2007 are different, could be due to instruments accuracy, environment conditions, errors while entering data, etc.

Resources

- Prairie View University Archives Department
- Texas Historical Commission

Web site references:

- www.familysearch.org
- www.findagrave.com