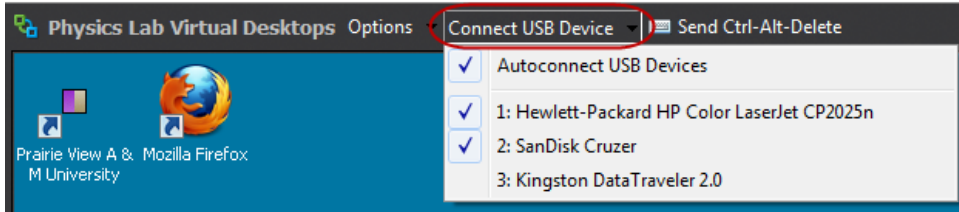


Navigating the Virtual Desktop for Faculty

Connecting to USB Devices

1. Click on **Connect USB Devices**
2. Select **Autoconnect USB Devices**
3. Select your listed devices

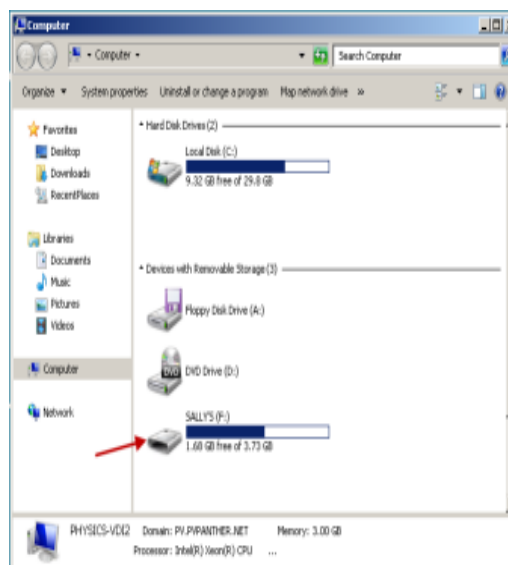


Accessing USB Devices

1. Click **Start**
2. Click on **Computer**



3. Double click a **USB device**



Saving to a USB Device

From within the document or program

1. Click **File**
2. Select **Save As**
3. Click **Computer**
4. Select a **USB Device**
5. Click **Save**.

***Note:** If your USB device does not appear in the **Computer** window it has not been connected (See **Connecting to USB Devices**)

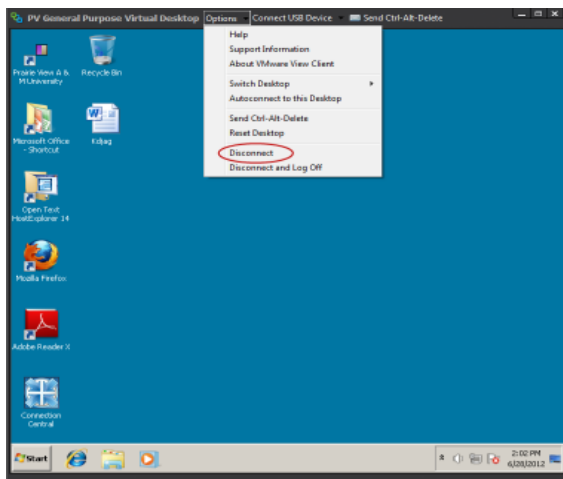
Saving to a Home Drive

From within the document or program

1. Click **File**
2. Select **Save As**
3. Click **Computer**
4. Select your **Home Drive**
5. Click **Save**

Logging Out of VLC

***Note:** All files will be deleted once you logged off the virtual desktop



***Note:** Please do not use the **X** to Log Off

From the **Menu Bar**

1. Click **Options**
2. Select **Disconnect**
3. Click **Yes** , when asked if you want to disconnect