

Texas Higher Education Coordinating Board - Space Usage Efficiency (SUE) - Fall 2012

Institution	Overall Score	Classroom Score	Class Lab Score	Classroom						Class Laboratory					
				Demand	Weighted Score	Utilization	Weighted Score	Average Percent Fill	Weighted Score	Demand	Weighted Score	Utilization	Weighted Score	Average Percent Fill	Weighted Score
UT-Arlington	183	83	100	42	27	36	24	71%	32	40	36	28	32	82%	32
UT-Austin	159	75	84	40	27	36	24	55%	24	44	36	30	32	57%	16
UT-Dallas	200	100	100	51	36	43	32	66%	32	39	36	30	32	78%	32
UT-El Paso	167	67	100	42	27	33	16	64%	24	50	36	26	32	76%	32
UT-Pan American	183	83	100	38	27	34	24	72%	32	36	36	28	32	81%	32
UT-Brownsville	168	84	84	53	36	30	16	70%	32	55	36	29	32	62%	16
UT-Permian Basin	184	92	92	46	36	38	32	59%	24	39	36	20	24	80%	32
UT-San Antonio	200	100	100	49	36	42	32	66%	32	36	36	28	32	75%	32
UT-Tyler	150	58	92	37	18	32	16	59%	24	37	36	25	32	67%	24
TAMU	192	92	100	61	36	34	24	71%	32	40	36	30	32	83%	32
TAMU-Galveston	159	76	83	47	36	31	16	62%	24	33	27	28	32	71%	24
Prairie View	141	83	58	38	27	38	32	59%	24	25	18	19	16	69%	24
Tarleton	117	33	84	30	9	28	8	54%	16	101	36	17	16	75%	32
TAMU-Central	58	33	25	17	9	17	8	51%	16	0	9	0	8		8
TAMU-CC	116	67	49	38	27	32	16	62%	24	22	9	19	16	69%	24
TAMU-Kingsville	132	66	66	37	18	30	16	66%	32	27	18	22	24	67%	24
TAMU-San Antonio	158	75	83	41	27	35	24	62%	24	32	27	26	32	72%	24
TAMI	159	67	92	38	27	30	16	64%	24	41	36	24	24	75%	32
WTAMU	108	41	67	24	9	22	8	56%	24	30	27	26	32	48%	8
TAMU-Commerce	99	50	49	31	18	27	8	60%	24	20	9	18	16	73%	24
TAMU-Texarkana	124	66	58	37	18	34	24	60%	24	25	18	22	24	60%	16
UH	200	100	100	47	36	40	32	65%	32	47	36	30	32	97%	32
UH-Clear Lake	134	50	84	35	18	28	8	61%	24	37	36	23	24	66%	24
UH-Downtown	157	66	91	33	18	30	16	73%	32	33	27	26	32	77%	32
UH-Victoria	116	67	49	43	27	30	16	58%	24	10	9	10	8	91%	32
Midwestern	126	67	59	39	27	34	24	53%	16	31	27	14	8	68%	24
UNT	192	92	100	51	36	34	24	74%	32	56	36	34	32	75%	32
UNT-Dallas	90	41	49	26	9	25	8	56%	24	19	9	19	16	73%	24
SFA	117	41	76	27	9	24	8	63%	24	43	36	26	32	54%	8
TSU	98	49	49	23	9	23	8	66%	32	13	9	10	8	100%	32
TTU	175	83	92	44	27	34	24	68%	32	47	36	29	32	71%	24
Angelo	149	66	83	33	18	30	16	69%	32	32	27	26	32	70%	24
TWU	175	84	91	51	36	34	24	63%	24	34	27	25	32	76%	32
Lamar	151	75	76	39	27	31	16	66%	32	36	36	21	24	63%	16
Sam Houston	149	66	83	35	18	32	16	67%	32	34	27	28	32	68%	24
TxStU-SM	200	100	100	46	36	38	32	69%	32	48	36	36	32	77%	32
Sul Ross	58	33	25	17	9	14	8	50%	16	10	9	9	8	48%	8
Sul Ross - RG	74	25	49	14	9	13	8	36%	8	2	9	2	8	82%	32
TSTC-Harlingen	150	67	83	41	27	26	8	86%	32	30	27	21	24	90%	32
TSTC-West Texas	67	33	34	8	9	7	8	52%	16	26	18	11	8	53%	8
TSTC-Marshall	141	49	92	24	9	15	8	74%	32	79	36	21	24	83%	32
TSTC-Waco	106	49	57	22	9	18	8	76%	32	22	9	18	16	75%	32
Lamar-IOT	151	59	92	38	27	29	8	59%	24	38	36	34	32	66%	24
Lamar-Orange	176	84	92	45	36	30	16	65%	32	36	36	28	32	68%	24
Lamar-Port Arthur	107	41	66	30	9	27	8	62%	24	29	18	23	24	69%	24

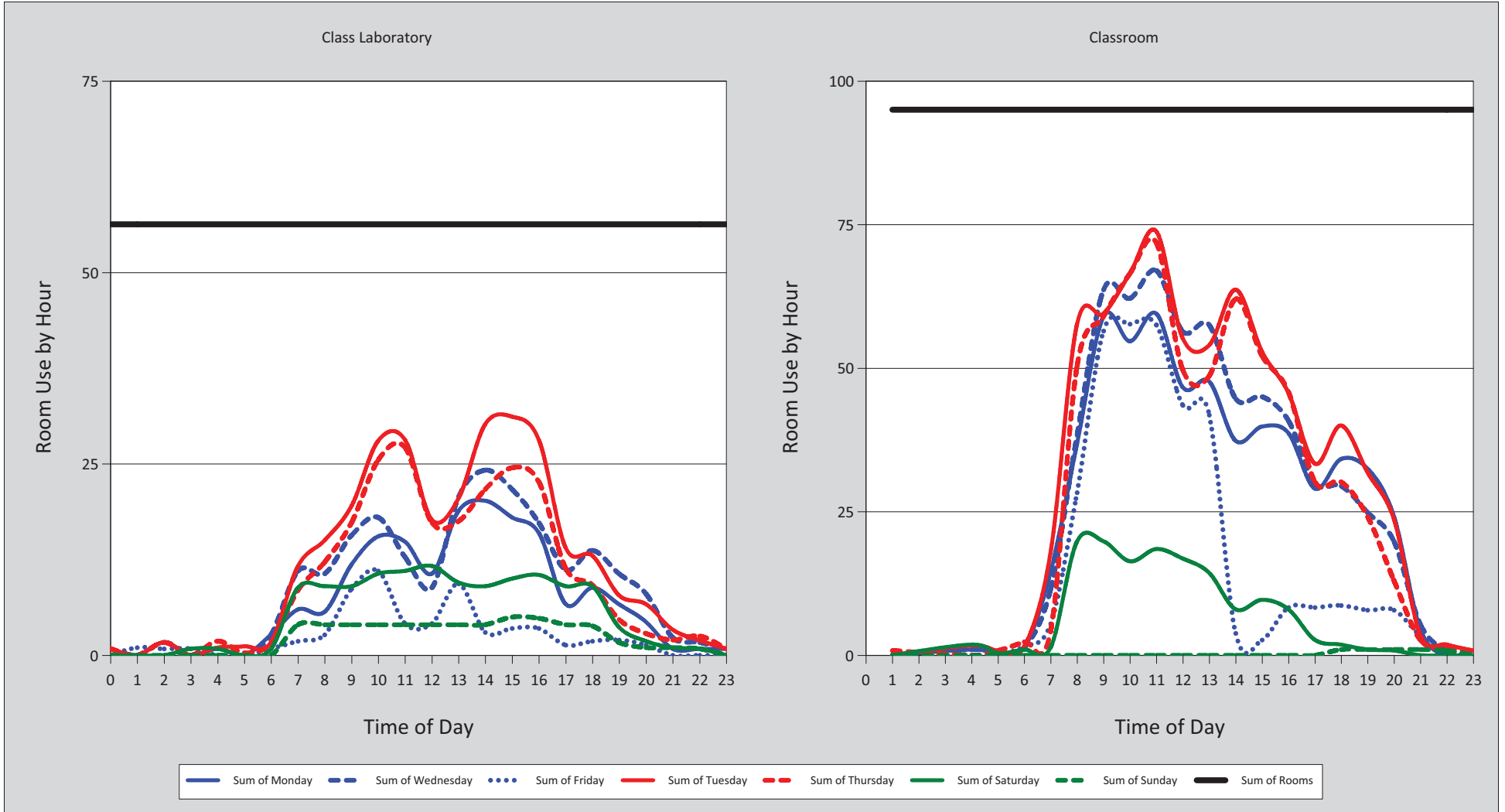
State and Technical Colleges' Demand hours include Continuing Education hours provided on the CBM00C report.

Last Updated
12/13/2012

Classroom Weighted Scoring					
Score (weight = 9)	Score (weight = 8)	Score (weight = 8)	Score (weight = 8)	Score (weight = 8)	Score (weight = 8)
45 or >	36	38 or >	32	65% or >	32
38 - 44.9	27	34 - 37.9	24	55 - 64.9	24
31 - 37.9	18	30 - 33.9	16	45 - 54.9	16
< 31	9	< 30	8	< 45%	8

Class Laboratory Weighted Scoring					
Score (weight = 9)	Score (weight = 8)	Score (weight = 8)	Score (weight = 8)	Score (weight = 8)	Score (weight = 8)
35 or >	36	25 or >	32	75% or >	32
30 - 34.9	27	20 - 24.9	24	65 - 74.9	24
25 - 29.9	18	15 - 19.9	16	55 - 64.9	16
< 25	9	< 15	8	< 55%	8

Institution	Overall Score	Classroom Score	Class Lab Score	Classroom						Class Laboratory					
				Demand	Weighted Score	Utilization	Weighted Score	Average Percent Fill	Weighted Score	Demand	Weighted Score	Utilization	Weighted Score	Average Percent Fill	Weighted Score
Prairie View	142	75	67	38	27	37	24	61%	24	30	27	24	24	64%	16
Classroom Weighted Scoring						Class Laboratory Weighted Scoring									
Score (weight = 9)		Score (weight = 8)		Score (weight = 8)		Score (weight = 9)		Score (weight = 8)		Score (weight = 8)					
45 or >	36	38 or >	32	65% or >	32	35 or >	36	25 or >	32	75% or >	32				
38 - 44.9	27	34 - 37.9	24	55 - 64.9	24	30 - 34.9	27	20 - 24.9	24	65 - 74.9	24				
31 - 37.9	18	30 - 33.9	16	45 - 54.9	16	25 - 29.9	18	15 - 19.9	16	55 - 64.9	16				
< 31	9	< 30	8	< 45%	8	< 25	9	< 15	8	< 55%	8				



Institution	Overall Score	Classroom Score	Class Lab Score	Classroom						Class Laboratory													
				Demand	Weighted Score	Utilization	Weighted Score	Average Percent Fill	Weighted Score	Demand	Weighted Score	Utilization	Weighted Score	Average Percent Fill	Weighted Score								
Prairie View	141	83	58	38	27	38	32	59%	24	25	18	19	16	69%	24								
Classroom Weighted Scoring						Class Laboratory Weighted Scoring																	
Score (weight = 9)		Score (weight = 8)		Score (weight = 8)		Score (weight = 9)		Score (weight = 8)		Score (weight = 8)													
45 or >		36		38 or >		32		65% or >		32		35 or >		36		25 or >		32		75% or >		32	
38 - 44.9		27		34 - 37.9		24		55 - 64.9		24		30 - 34.9		27		20 - 24.9		24		65 - 74.9		24	
31 - 37.9		18		30 - 33.9		16		45 - 54.9		16		25 - 29.9		18		15 - 19.9		16		55 - 64.9		16	
< 31		9		< 30		8		< 45%		8		< 25		9		< 15		8		< 55%		8	

