

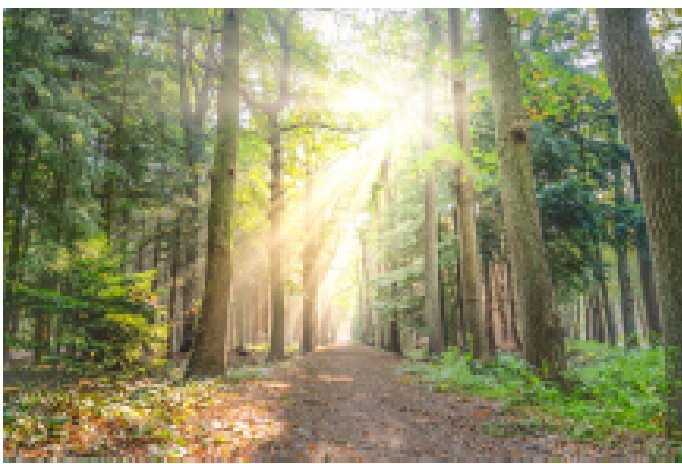


PRAIRIE VIEW  
A&M UNIVERSITY  
COLLEGE OF AGRICULTURE  
AND HUMAN SCIENCES

Cooperative Extension Program



Agriculture and Natural  
Resources



# Small Farm Institute

## Sustainable Forestry & African American Land Retention Workshop

### TOPICS

- Heirs' Property
- Forest Management
- Timber Harvesting
- Technical Assistance and Financial Resources Available Through USDA NRCS and FSA



FOR ADDITIONAL INFORMATION: Angela Moore, Program Coordinator, PH: (936) 261-5002 or Email: [almoore@pvamu.edu](mailto:almoore@pvamu.edu)

**Date:**

**07.14.22  
Thursday**

**FREE!!!**

**Click [HERE](#) to Register**

After registering, you will receive a confirmation email containing information about joining the meeting.

**Time:**

**1:00pm-4:00pm**

The Cooperative Extension Program does not discriminate against anyone regardless of their race, color, national origin, religion, sex, gender identity (including gender expression), sexual orientation, disability, age, marital status, family/parental status, income derived from a public assistance program, political beliefs, reprisal or retaliation for prior civil rights activity, in any program or activity. Persons who require communication in a language other than English or with a disability who require alternative means of communication of program information (braille, large print, audiotape, etc.) should contact Mr. Corey Hicks at 936-544-7502 in advance.