

OVERLAND PARTNERS | ARCHITECTS

Agriculture & Business Multipurpose Classroom Building
Prairie View A&M University

100% Design Development Review Meeting

May 22, 2013



AGENDA

- 10:00 – 10:15 Introductions / Outline for Today's Meeting / Guiding Principles
- 10:15 – 12:00 Project Design Overview
- 12:00 – 12:45 Lunch
- 12:45 – 2:15 Preliminary Furniture Selections
- 2:15 – 2:30 Conclusions and Directives



Project Schedule

11.14.2012	Schematic Design Kick Off and Validation Workshop	
12.04.2012	50% Schematic Design Workshop	
01.10.2013	75% Schematic Design Workshop	
01.29.2013	100% Schematic Design Review	
04.16.2013	75% Design Development Review	
05.22.2013	100% Design Development Review	Today
08.20.2013	100% Construction Document Review	12 weeks



PROMOTE
COLLABORATION
@ ALL SIZES
INTERDISCIPLINARY 2



GUIDING PRINCIPLES

DUAL IDENTITY: Design a building that clearly expresses two major tenants: Business and Agriculture within a singular building composition that is "owned by all".

NO BACK DOOR: Create a building that is approachable from all sides, yet has clear major entrances.

INDOOR / OUTDOOR: Use transparency to dissolve the envelope between the interior and exterior spaces so that activity is expressed and visible to the larger University family.

CAMPUS CONNECTOR: Establish "common ground" by using the building to knit together the diverse campus fabric. Provide spaces for interdisciplinary collaboration, learning outside the classroom and social gathering to promote connections between the Prairie View A&M community.

ROOTS AND WINGS: Tie the building to Prairie View's cultural history and place, while creating an image that is forward looking and aspirational.

GUIDING PRINCIPLES

EXPRESSED VALUES: Create a welcoming visual icon for Prairie View A&M that conveys its mission and personality.

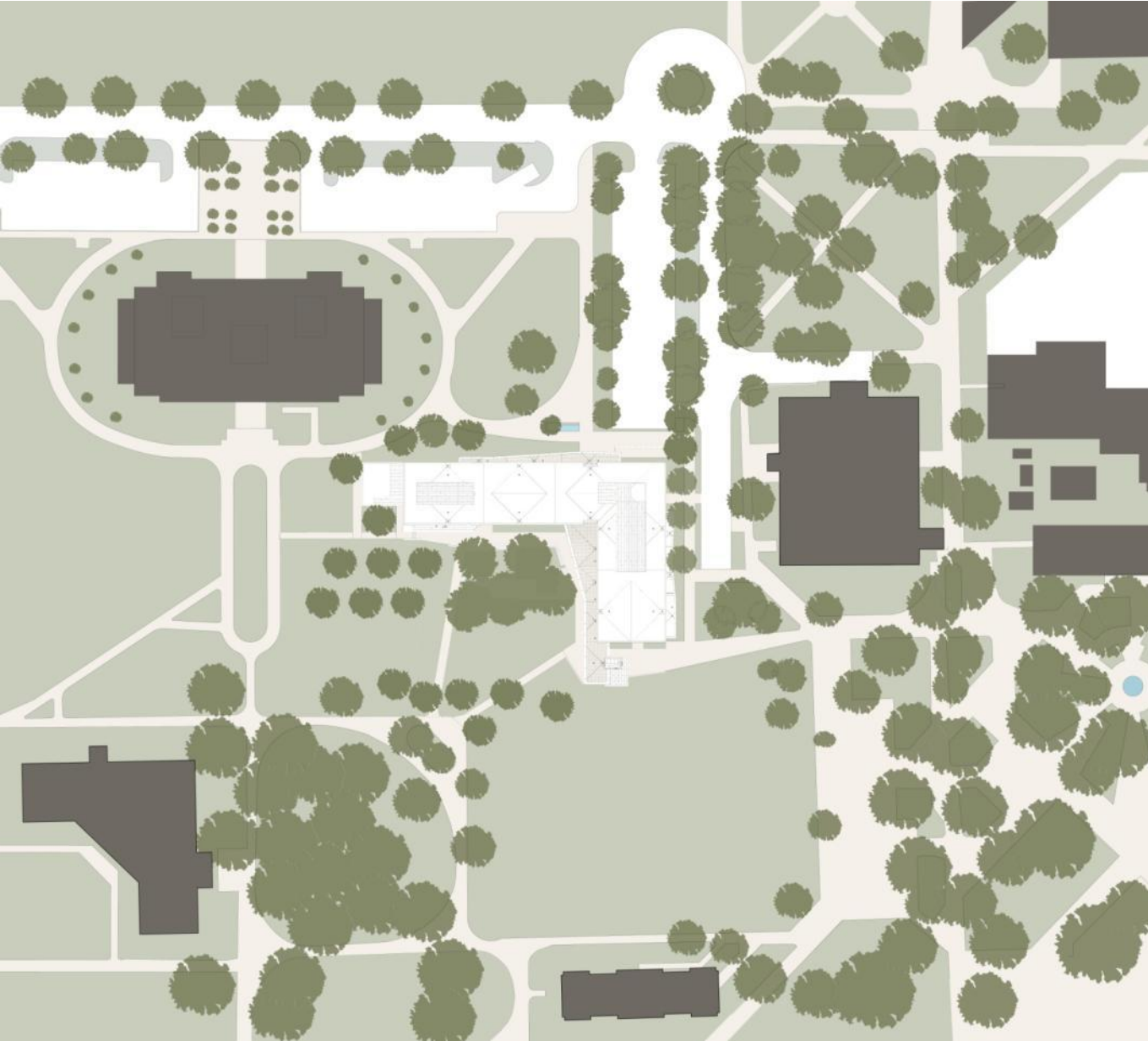
ORGANIC AND FLEXIBLE: Provide a framework for long term growth with a state-of-the-art facility that is functional, flexible and expandable.

SET THE BAR: Communicate the value of education and the institutional commitment to bring people to opportunity through high quality design and materials.

SUSTAINABILITY: Demonstrate environmental and economic sustainability, reflecting the University's role as stewards of health, energy, materials, and resources.

CENTER-POINT: Visually celebrate the geographic location of the building by creating a clear central place of intellectual and social activity.

SITE PLAN – BASE BUILDING

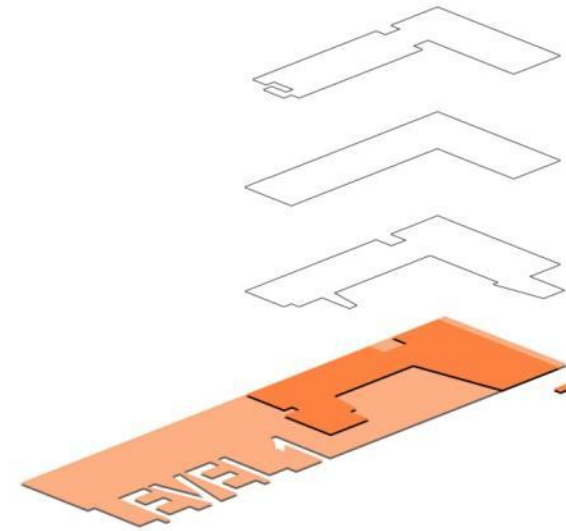
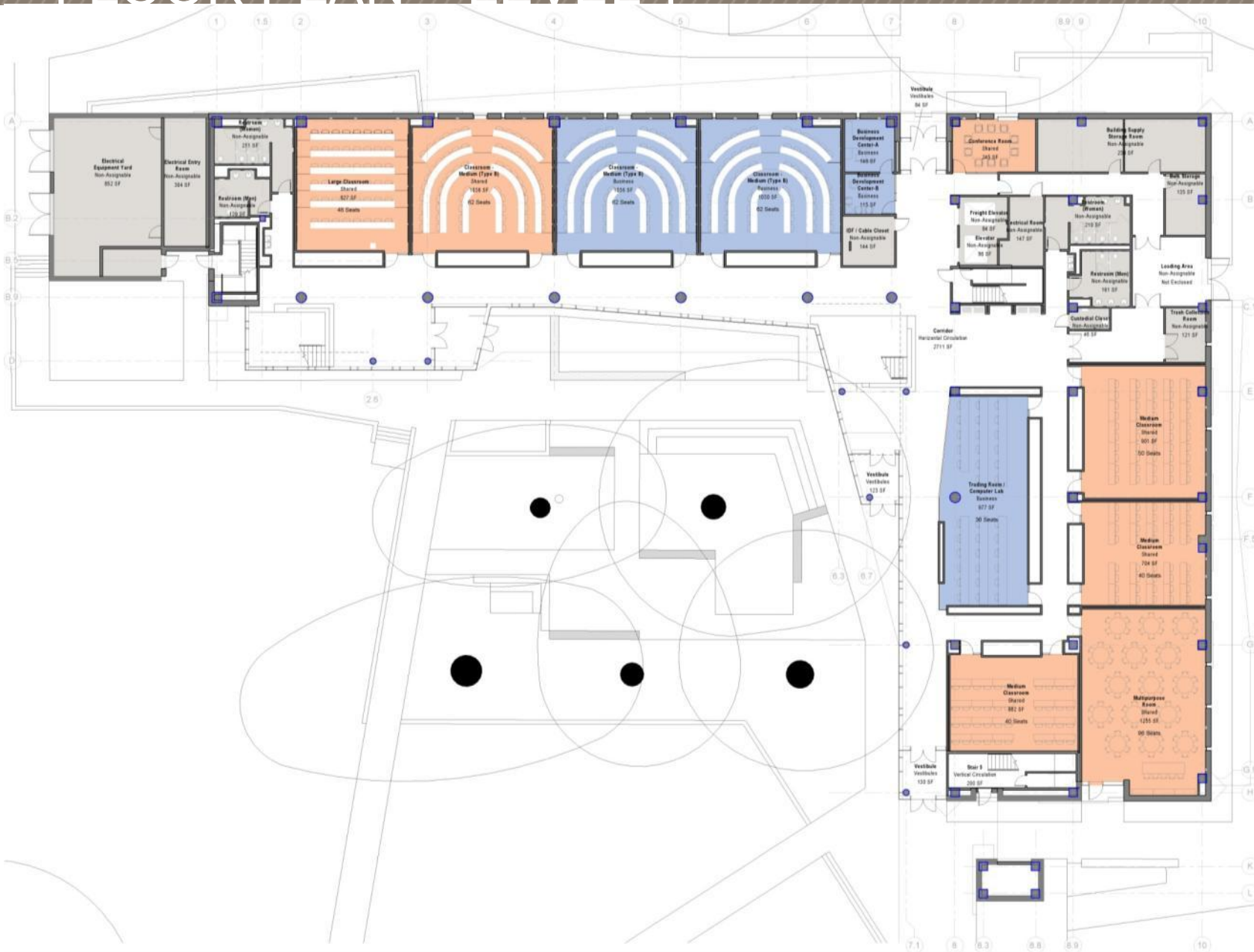


View From Ann Preston St. Looking South

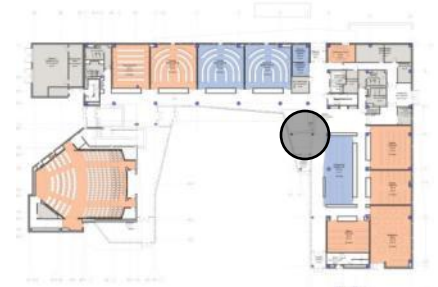


View From the Hill Looking Northwest

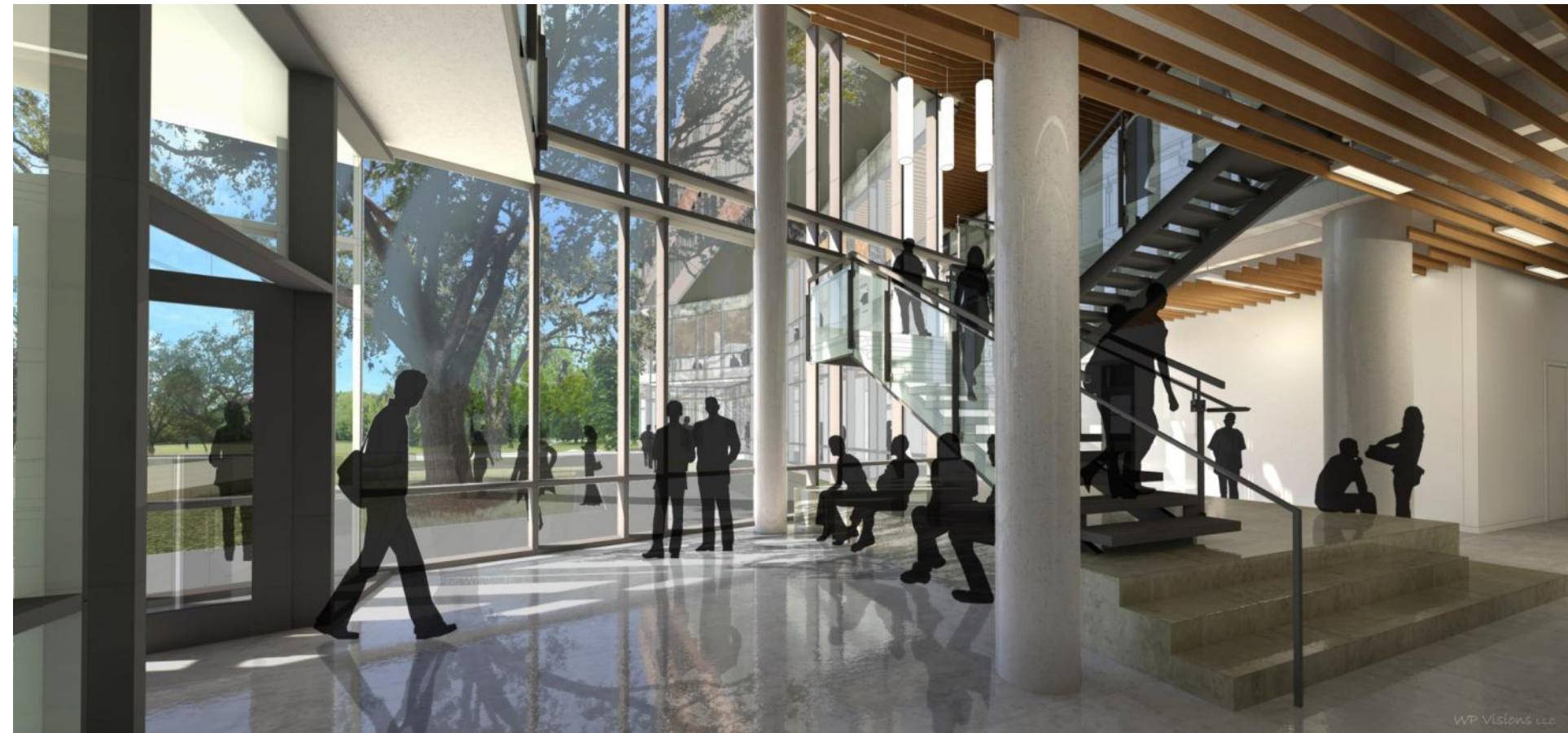
FLOOR PLAN – LEVEL 1



VIEW OF ENTRY LOUNGE – BASE BUILDING



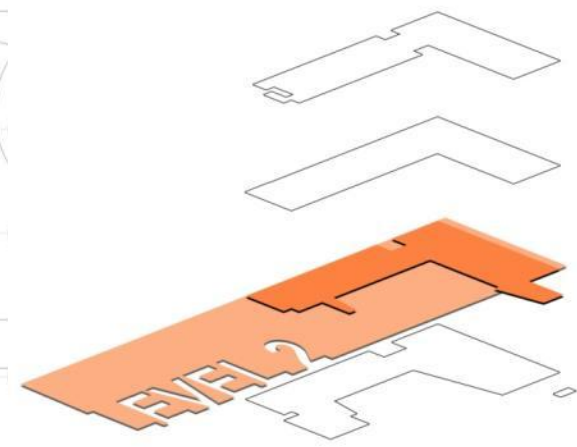
Level 1 Key Plan



VIEW FROM WEST COURTYARD – BASE BUILDING



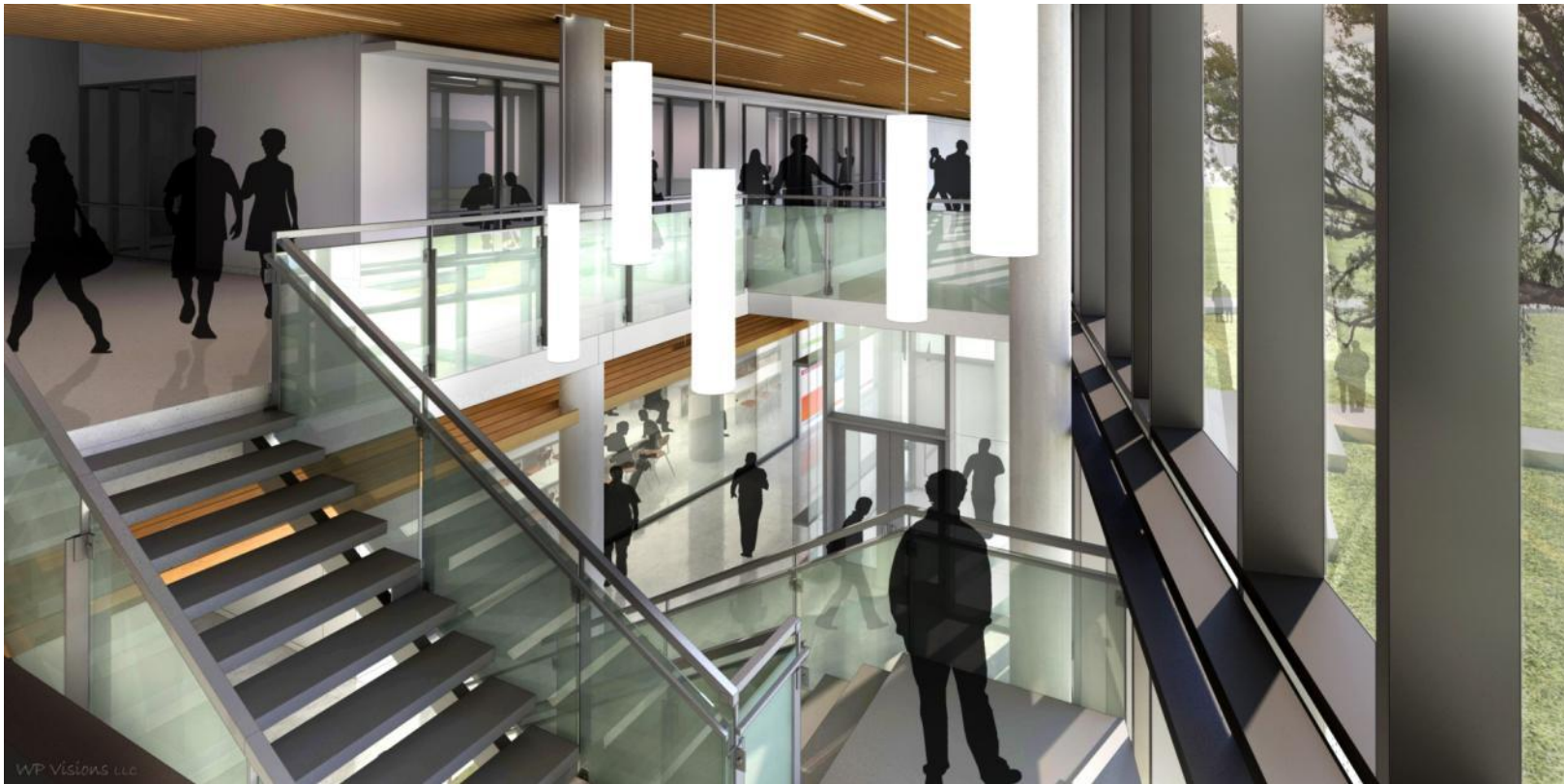
FLOOR PLAN – LEVEL 2



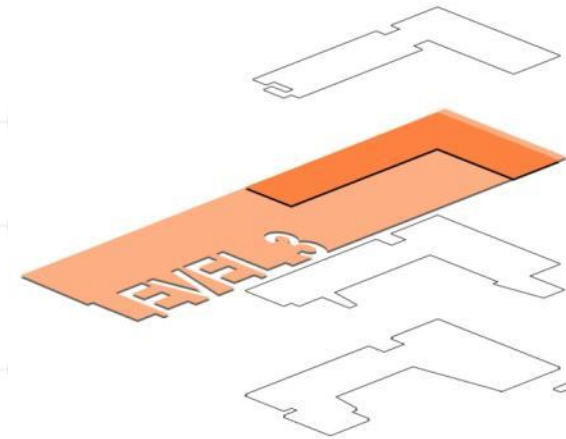
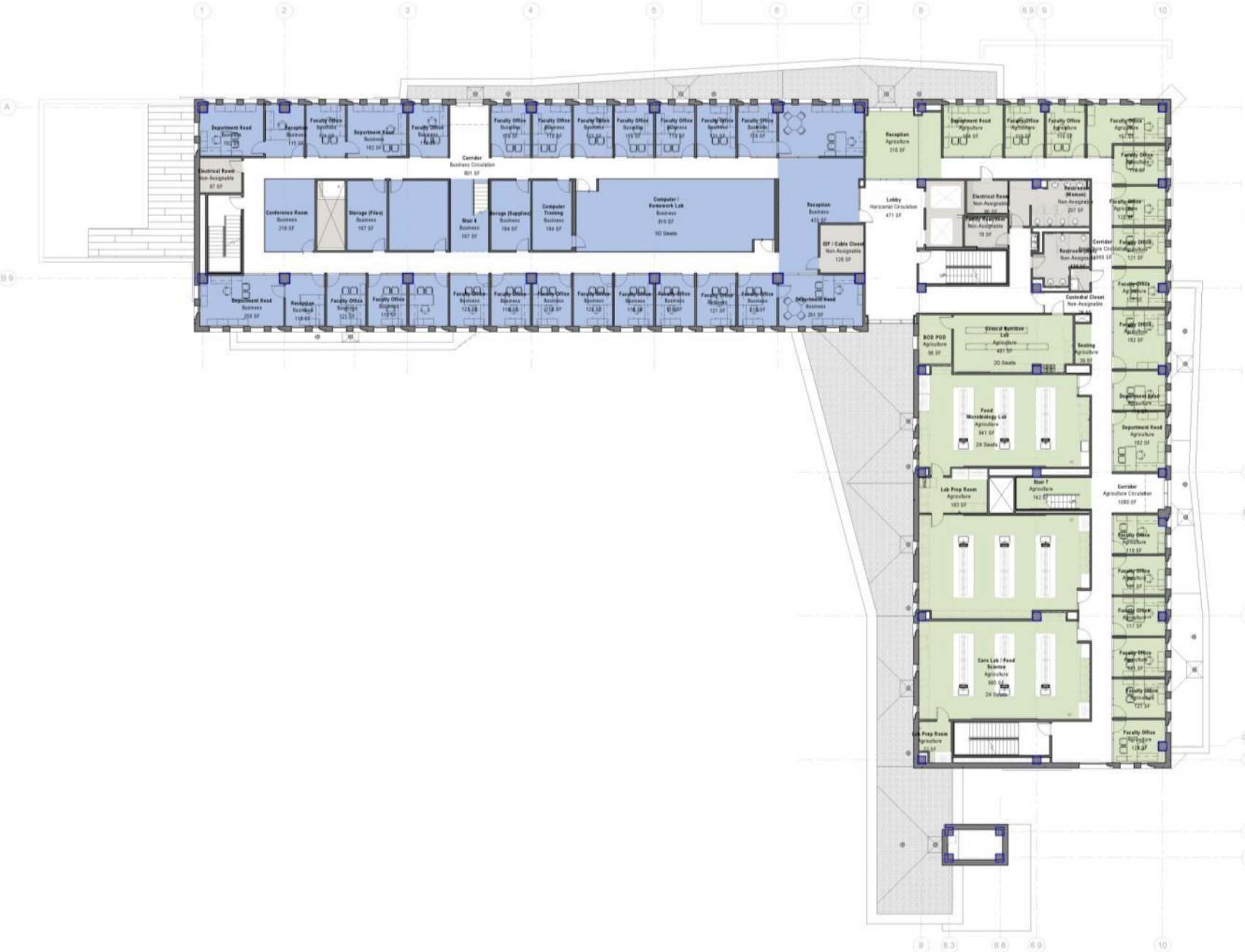
VIEW OF STUDY LOUNGE AT LEVEL 2



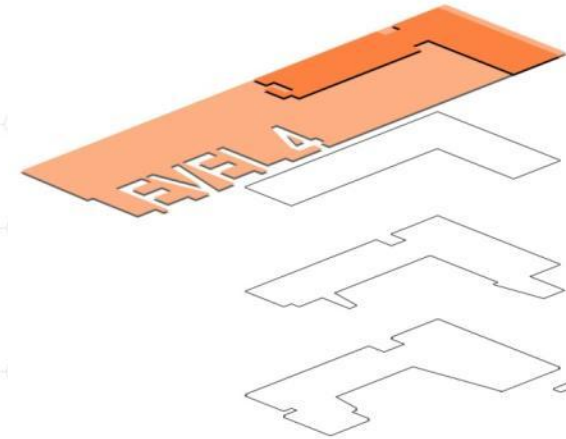
Level 2 Key Plan



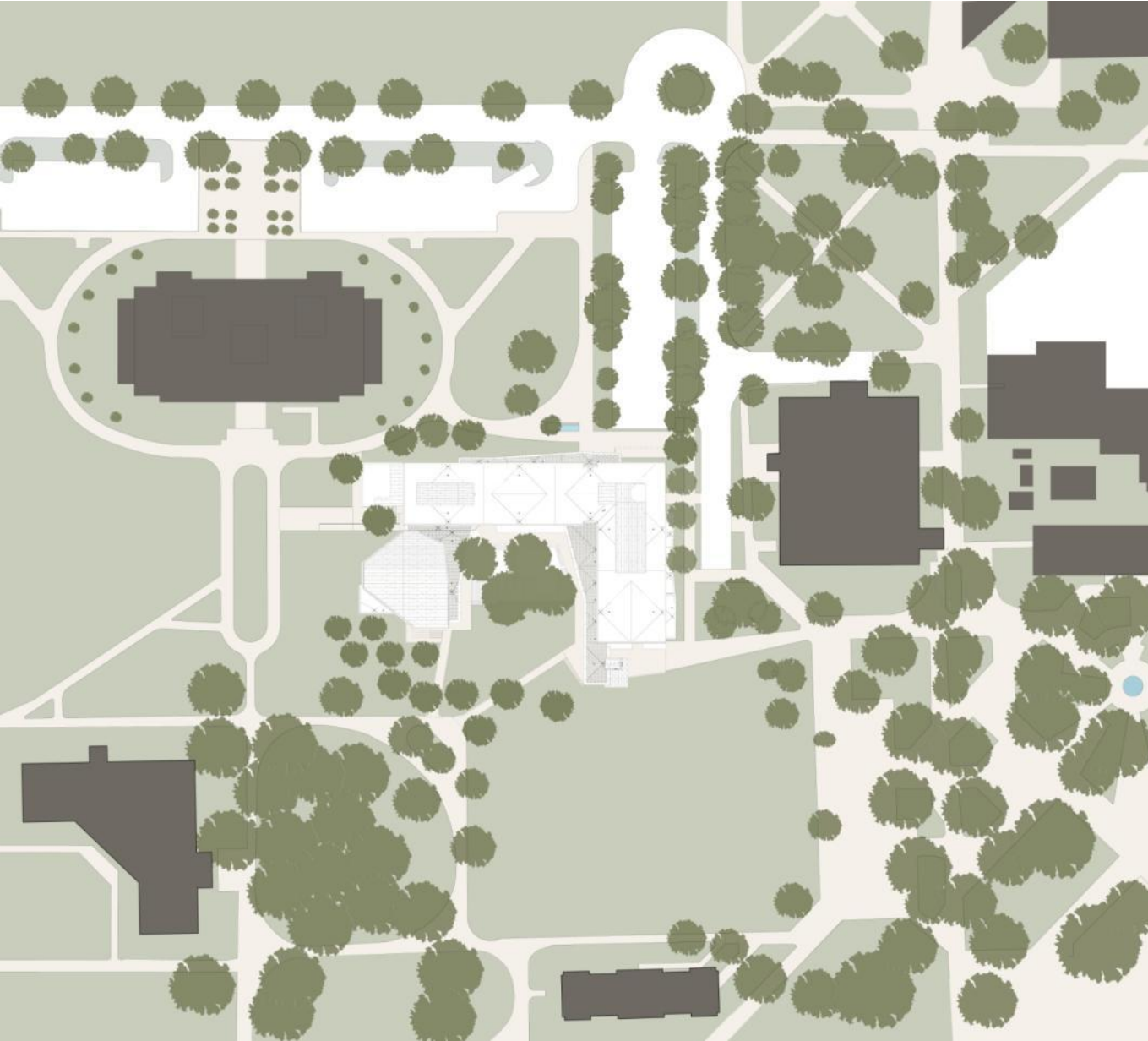
FLOOR PLAN – LEVEL 3



FLOOR PLAN – LEVEL 4



SITE PLAN – AUDITORIUM ALTERNATE

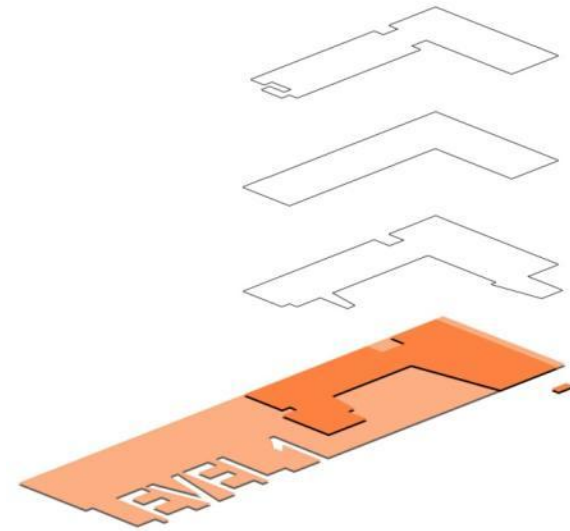
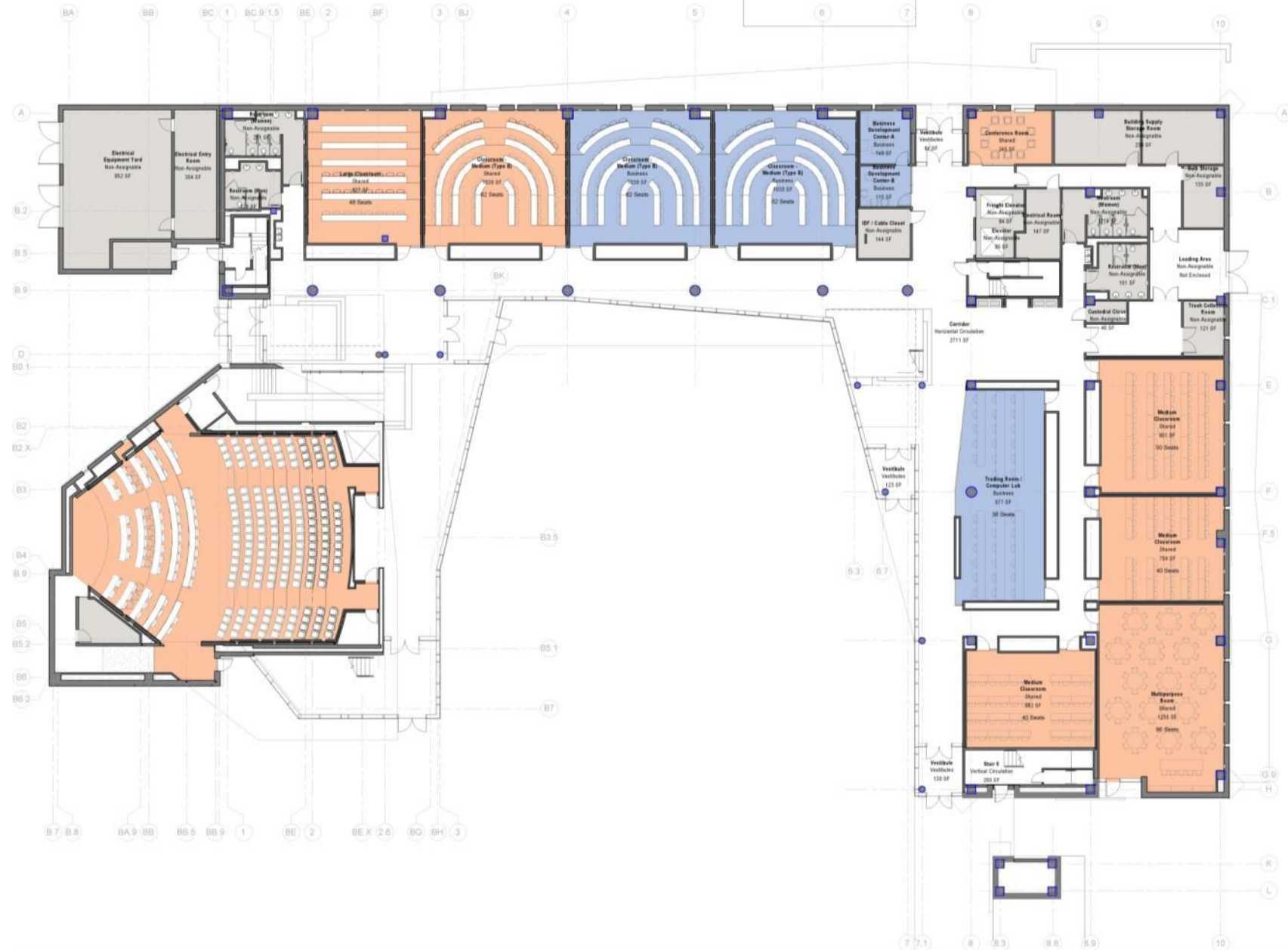


View From Ann Preston St. Looking South

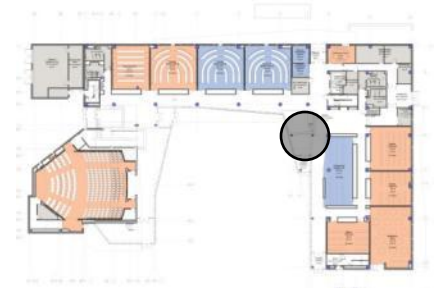


View From the Hill Looking Northwest

FLOOR PLAN – LEVEL 1 – AUDITORIUM ALTERNATE



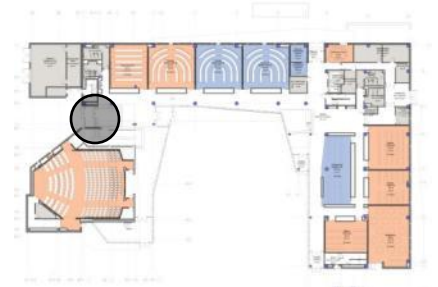
VIEW OF ENTRY LOUNGE – AUDITORIUM ALTERNATE



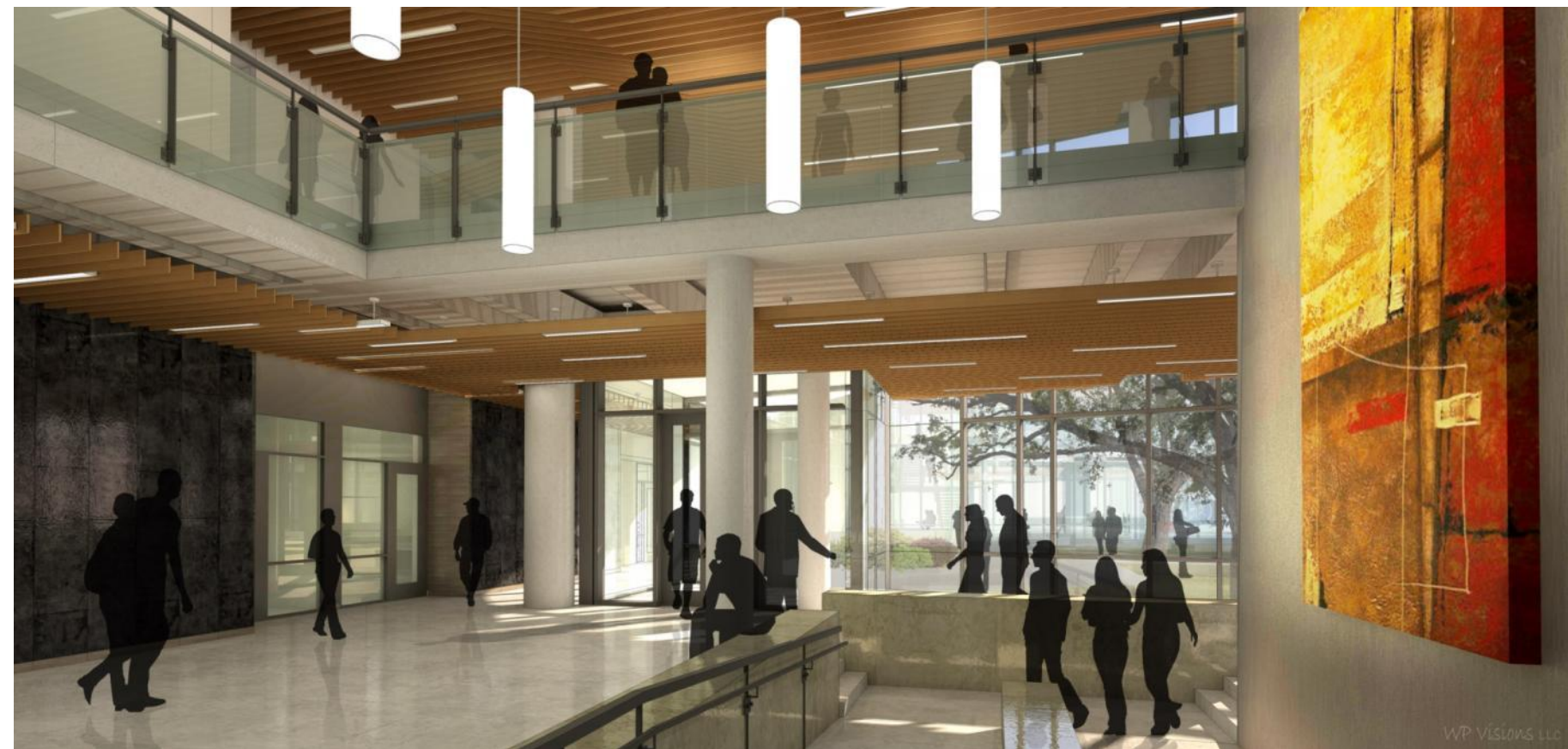
Level 1 Key Plan



VIEW FROM WEST ENTRY – AUDITORIUM ALTERNATE

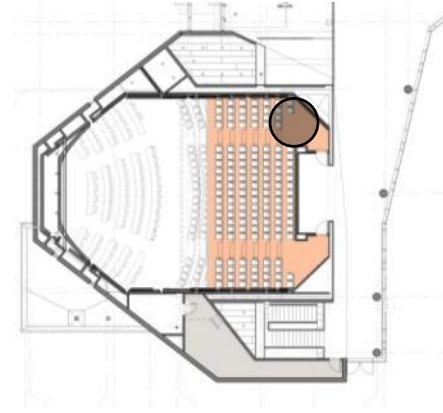
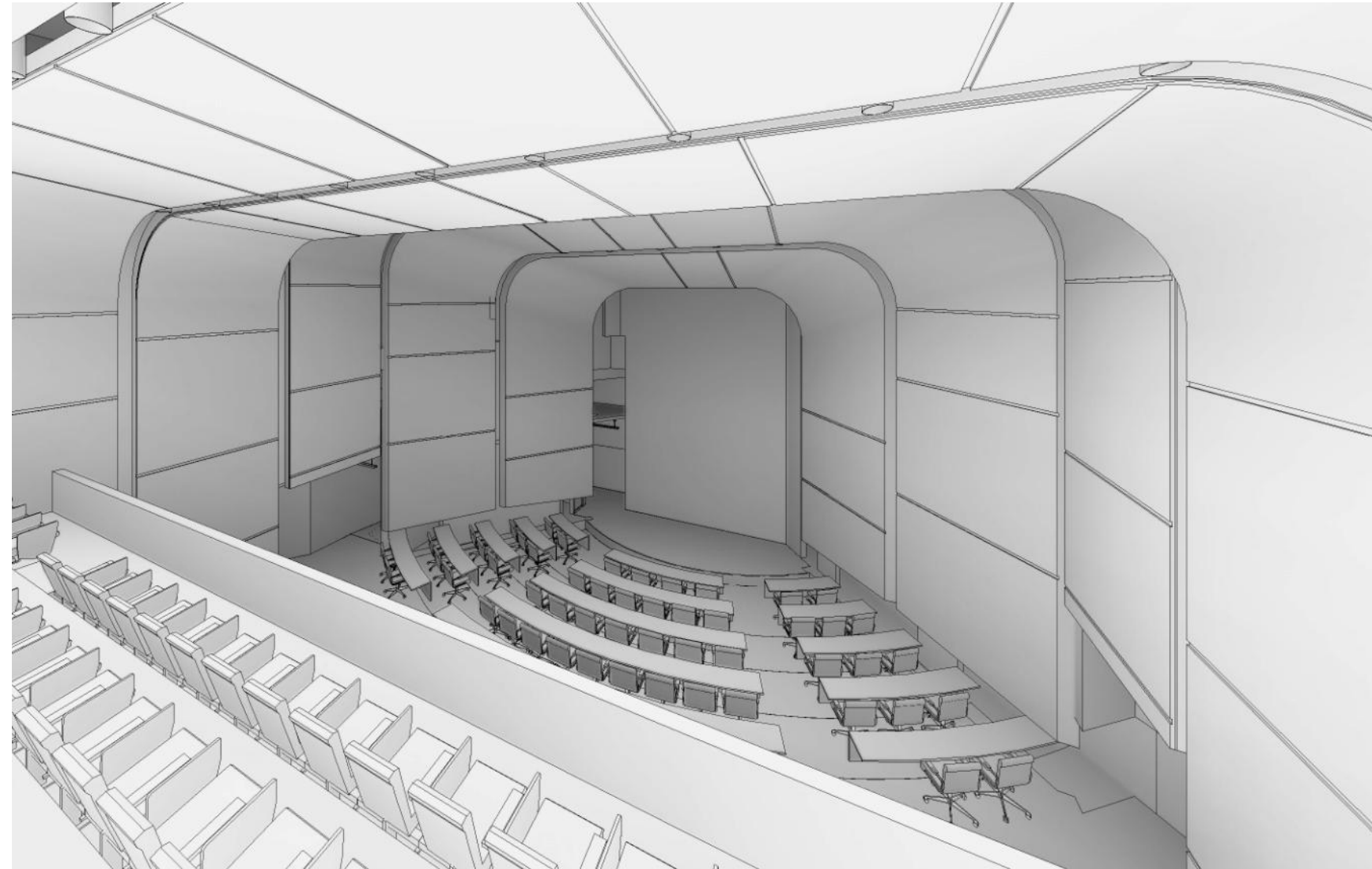


Level 1 Key Plan



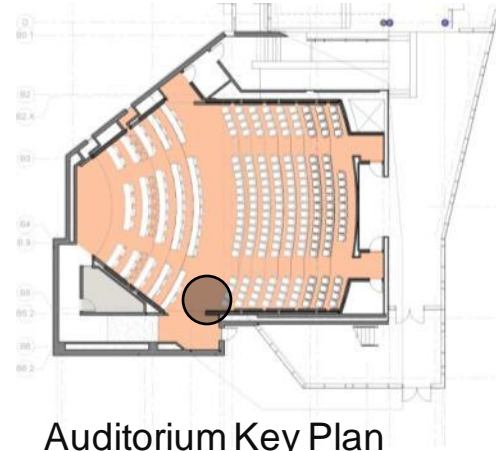
WP VISIONS LLC

VIEW OF AUDITORIUM EXECUTIVE SEATING



Auditorium Key Plan

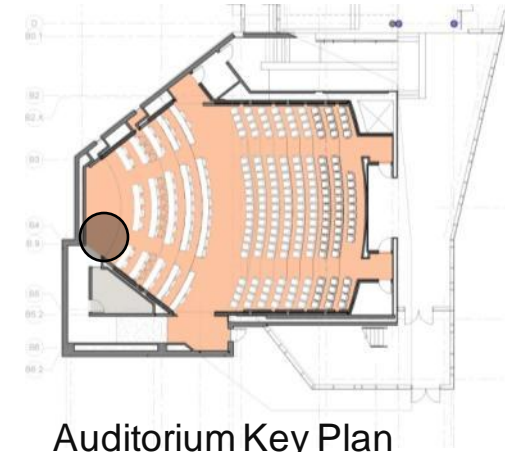
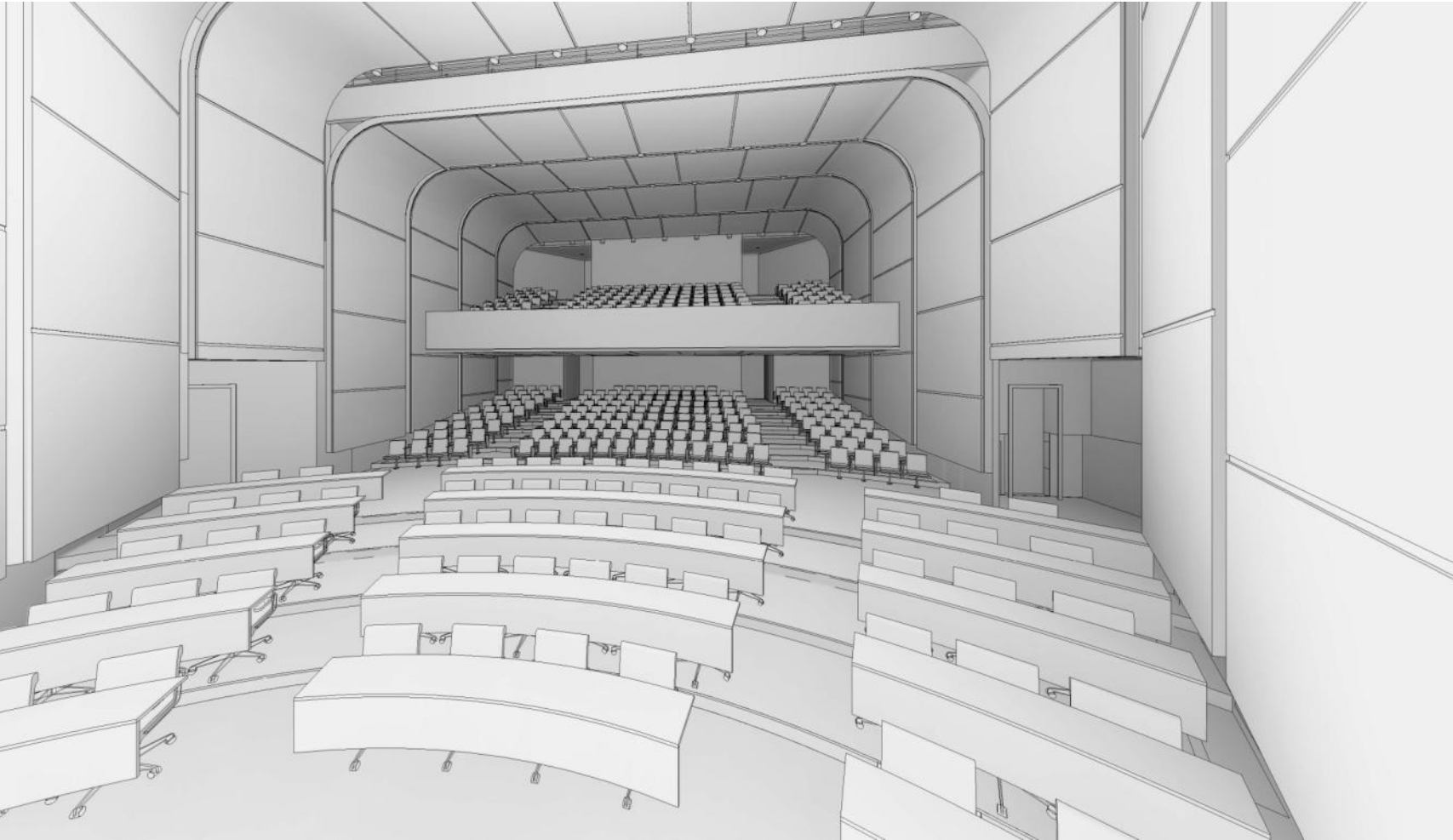
VIEW OF AUDITORIUM EXECUTIVE SEATING



Auditorium Key Plan



VIEW OF AUDITORIUM EXECUTIVE SEATING



Auditorium Key Plan

SOUTH ELEVATION – BASE BUILDING



Key Site Plan



Juvenile Justice Building

Agriculture and Business Multipurpose
Classroom Building

Hilliard Hall

SOUTH ELEVATION – BASE BUILDING



VIEW OF SOUTH COURTYARD – BASE BUILDING



VIEW OF SOUTH COURTYARD – BASE BUILDING



SOUTH ELEVATION – AUDITORIUM ALTERNATE



Key Site Plan



SOUTH ELEVATION – AUDITORIUM ALTERNATE



VIEW OF SOUTH COURTYARD – AUDITORIUM ALTERNATE



VIEW OF SOUTH COURTYARD – AUDITORIUM ALTERNATE



NORTH ELEVATION



Key Site Plan



Hilliard Hall

Agriculture and Business Multipurpose
Classroom Building

Juvenile Justice Building

NORTH ELEVATION



VIEW FROM NORTH PARKING AREA



EAST ELEVATION



Key Site Plan



Anderson
Hall

"The Hill"

Agriculture and Business Multipurpose
Classroom Building

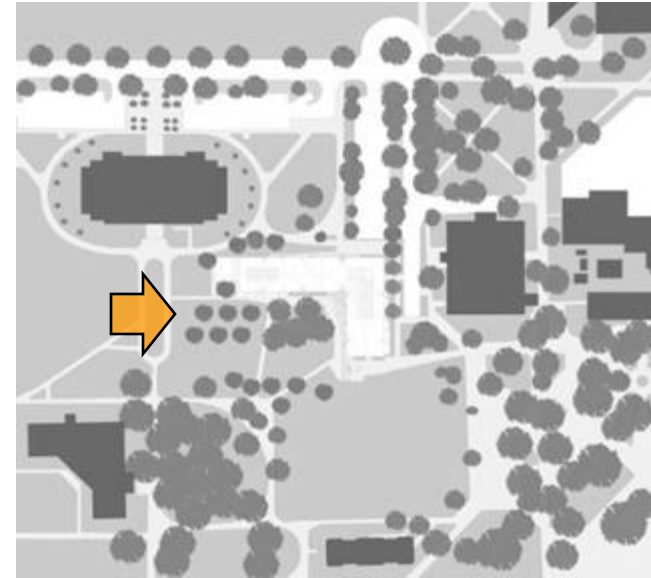
Juvenile Justice Building

East Elevation 1/16"=1'

EAST ELEVATION



WEST ELEVATION – BASE BUILDING



Key Site Plan



Agriculture and Business Multipurpose
Classroom Building

“The Hill”

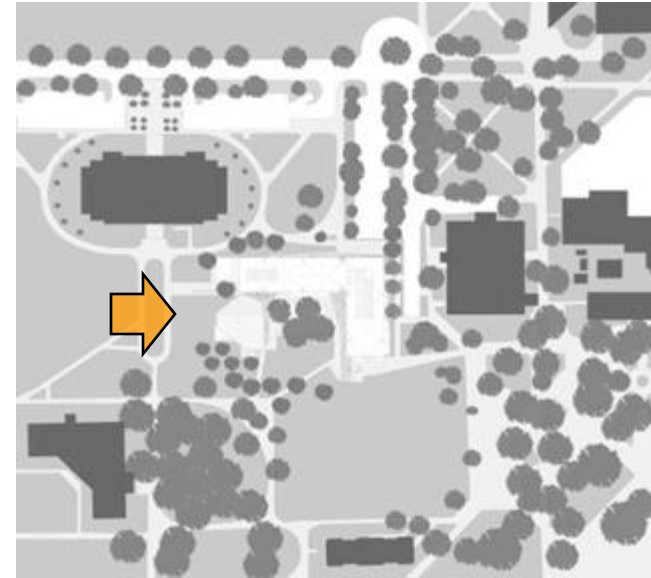
Anderson
Hall

West Elevation 1/16"=1'
1" = 16'

WEST ELEVATION – BASE BUILDING



WEST ELEVATION – AUDITORIUM ALTERNATE



Key Site Plan



Agriculture and Business Multipurpose
Classroom Building

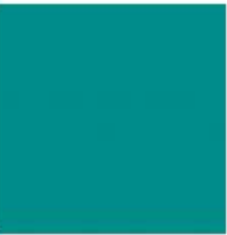
“The Hill”

Anderson
Hall

WEST ELEVATION – AUDITORIUM ALTERNATE



OVERALL DESIGN CONCEPT



COLOR BY FLOOR



BUSINESS



AGRICULTURE



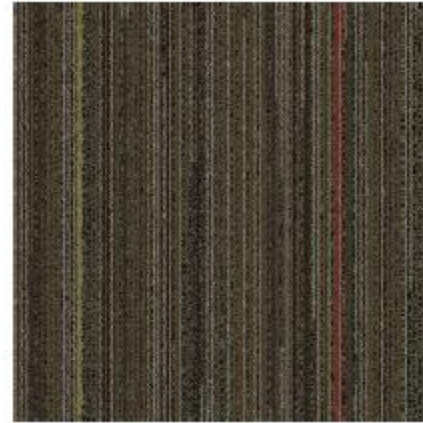
COLD ROLLED STEEL



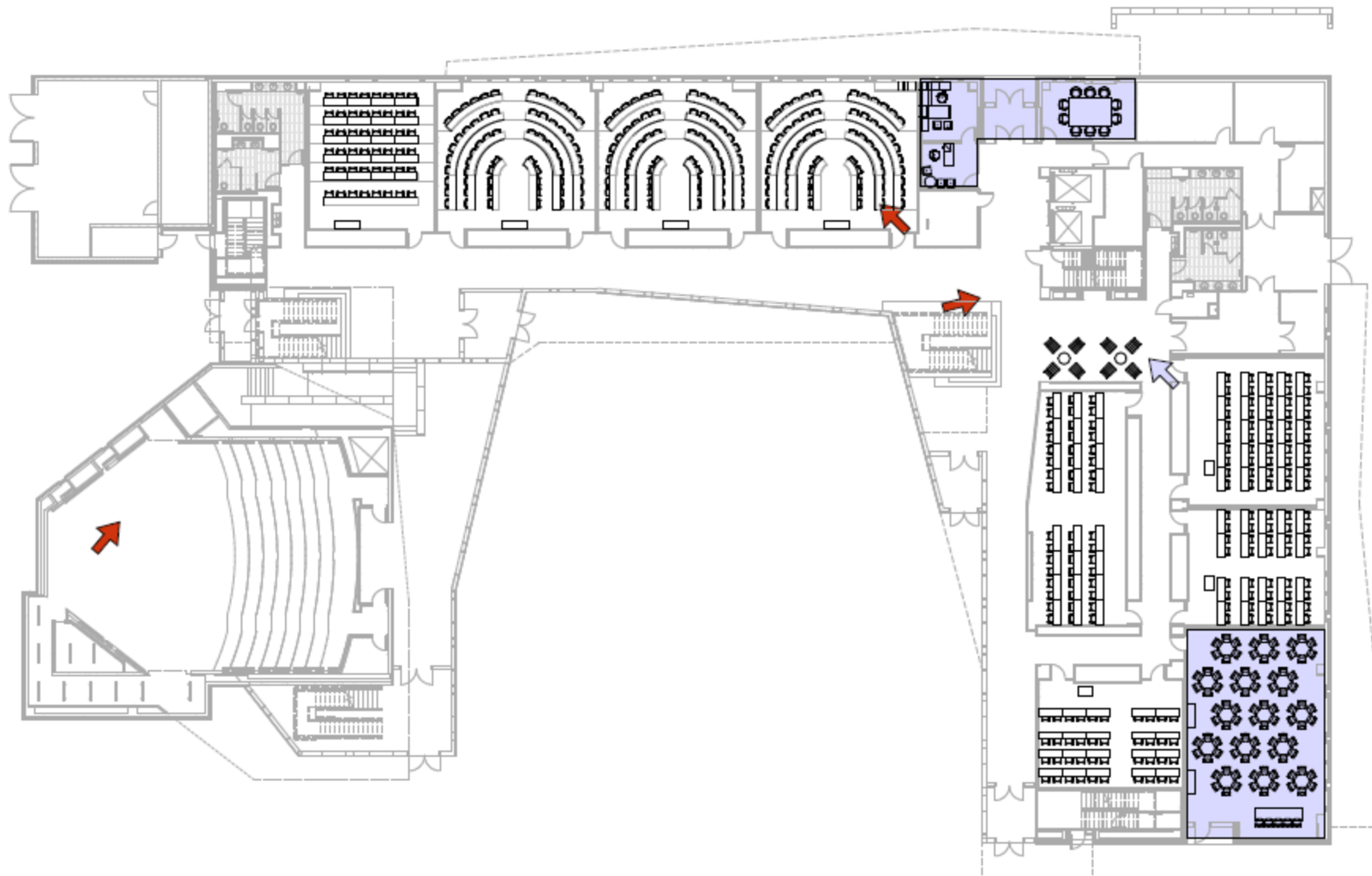
TEAK WOOD FINISH



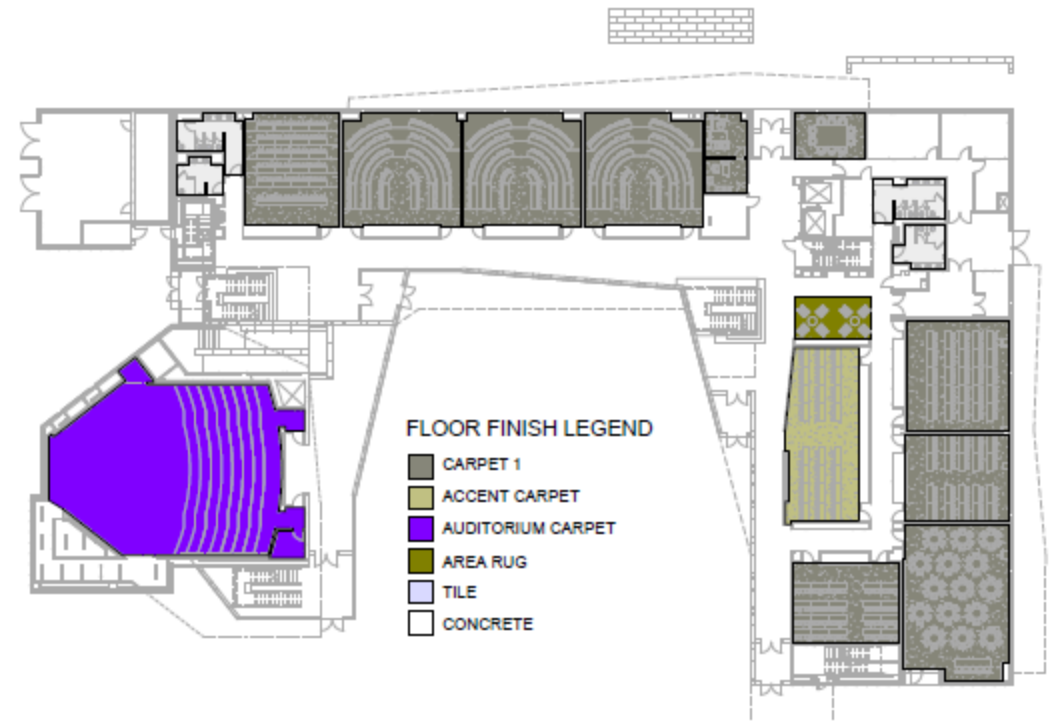
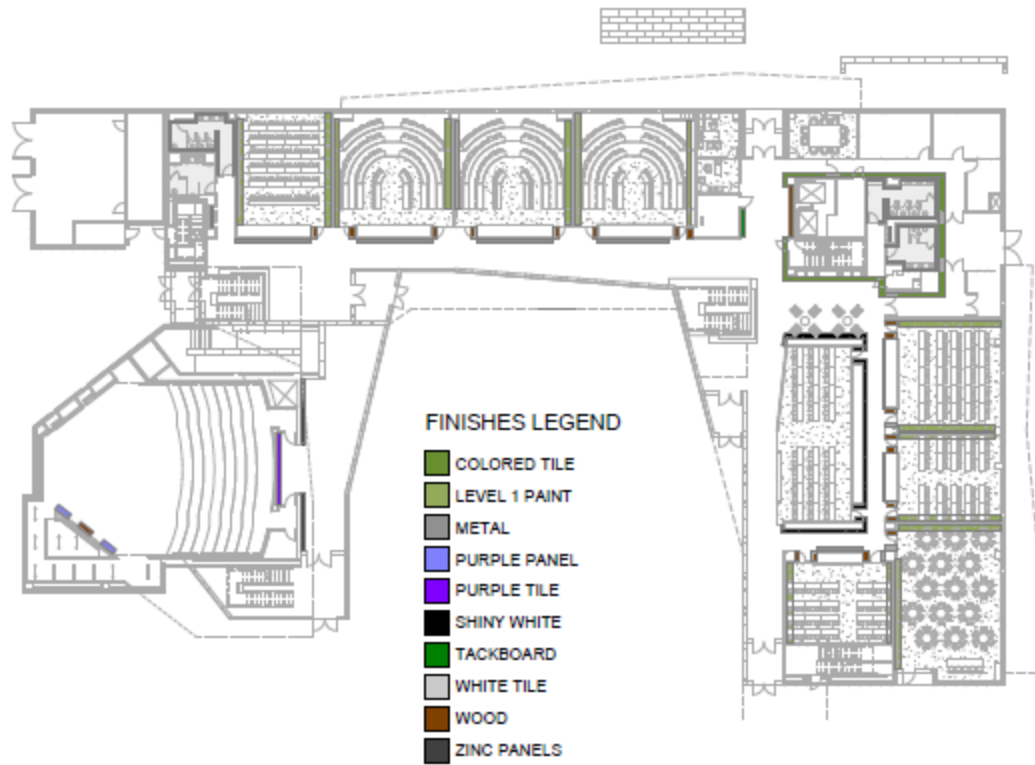
PAINTED DOORS TO COORDINATE WITH SCHOOL



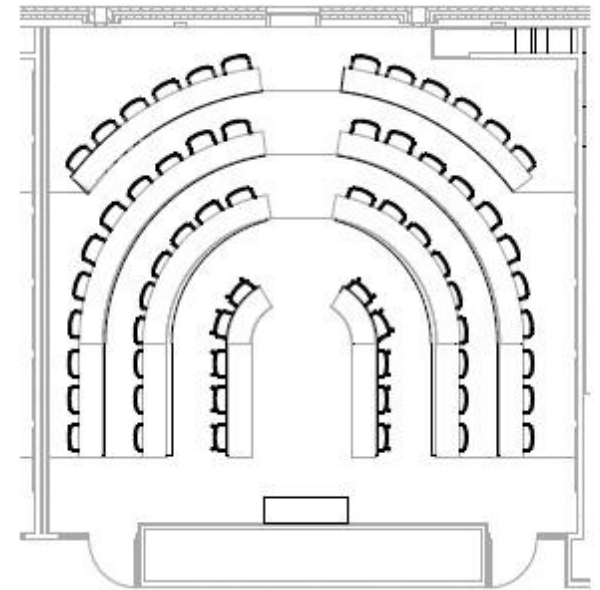
LEVEL 1



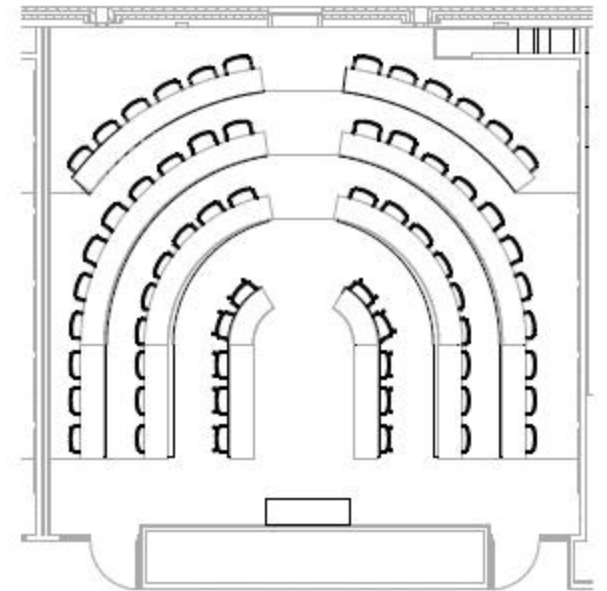
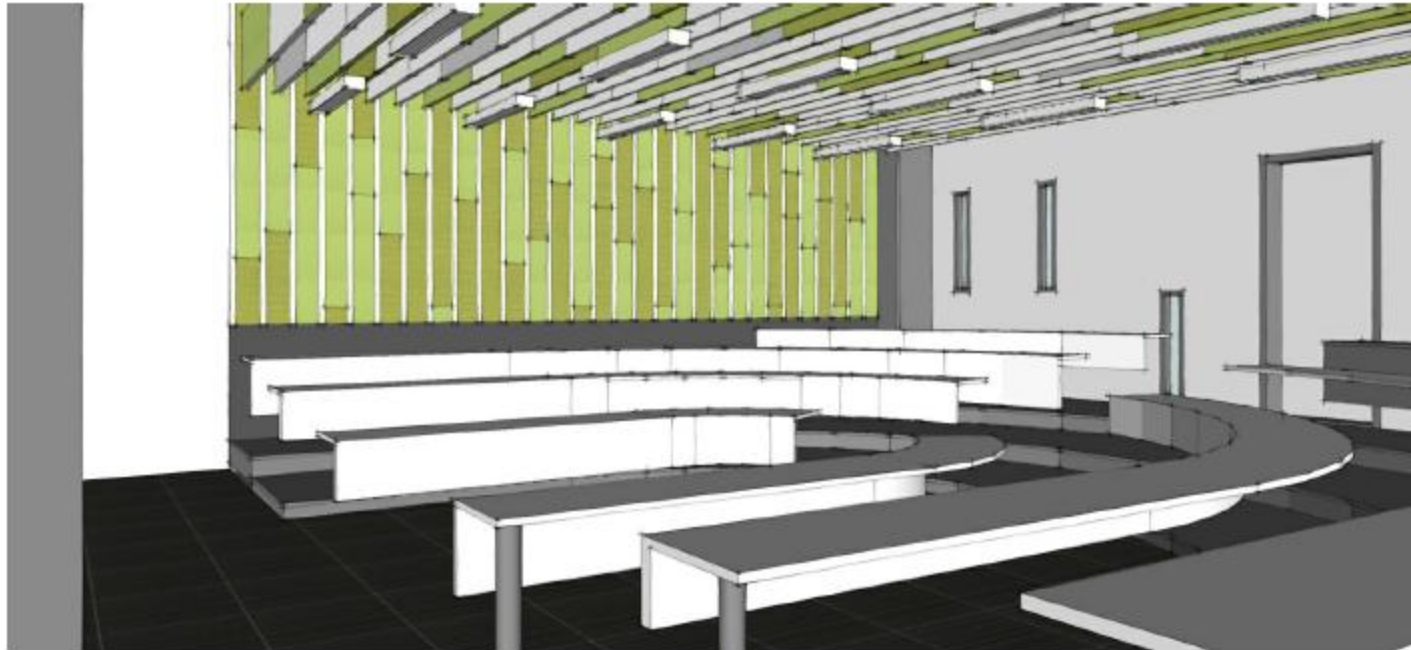
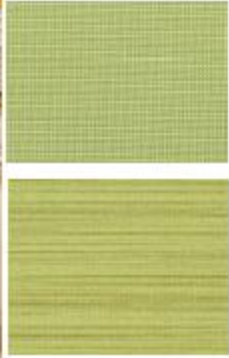
LEVEL 1 – FINISH PLAN



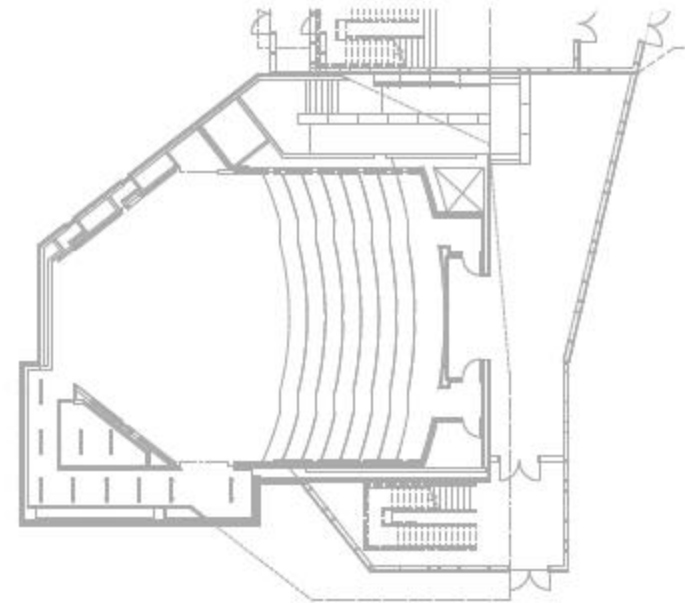
TYPICAL CLASSROOM



TYPICAL CLASSROOM



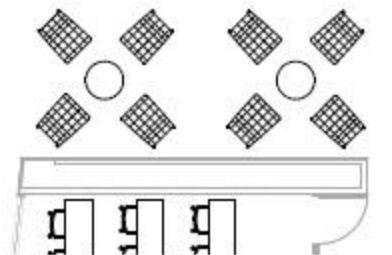
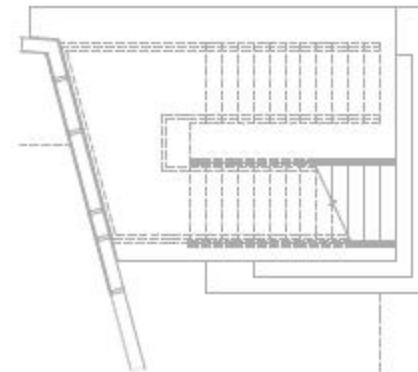
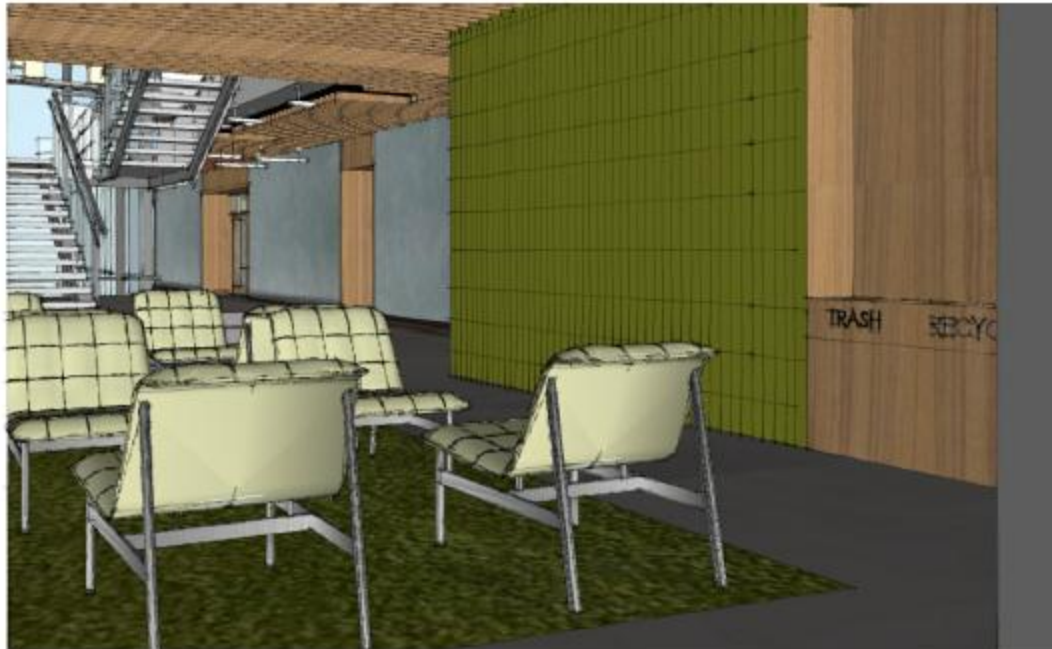
LEVEL 1 - AUDITORIUM



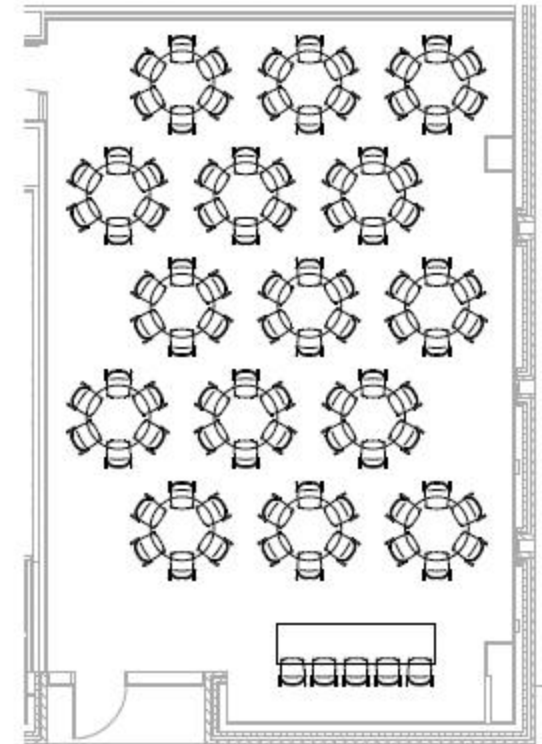
LEVEL 1 – PUBLIC CORRIDOR



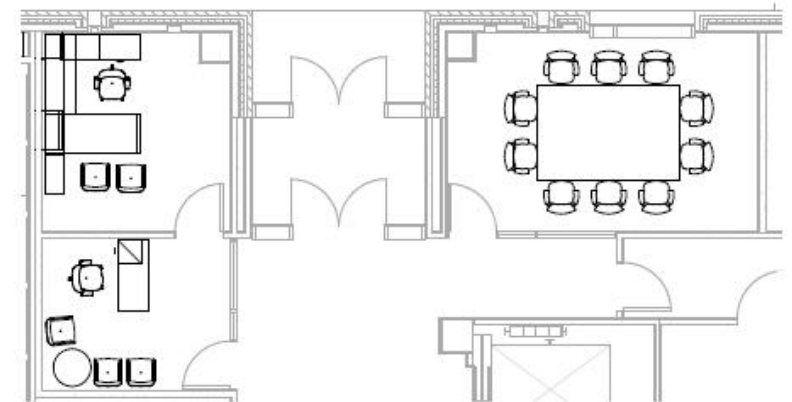
LEVEL 1 – ELEVATOR LOBBY



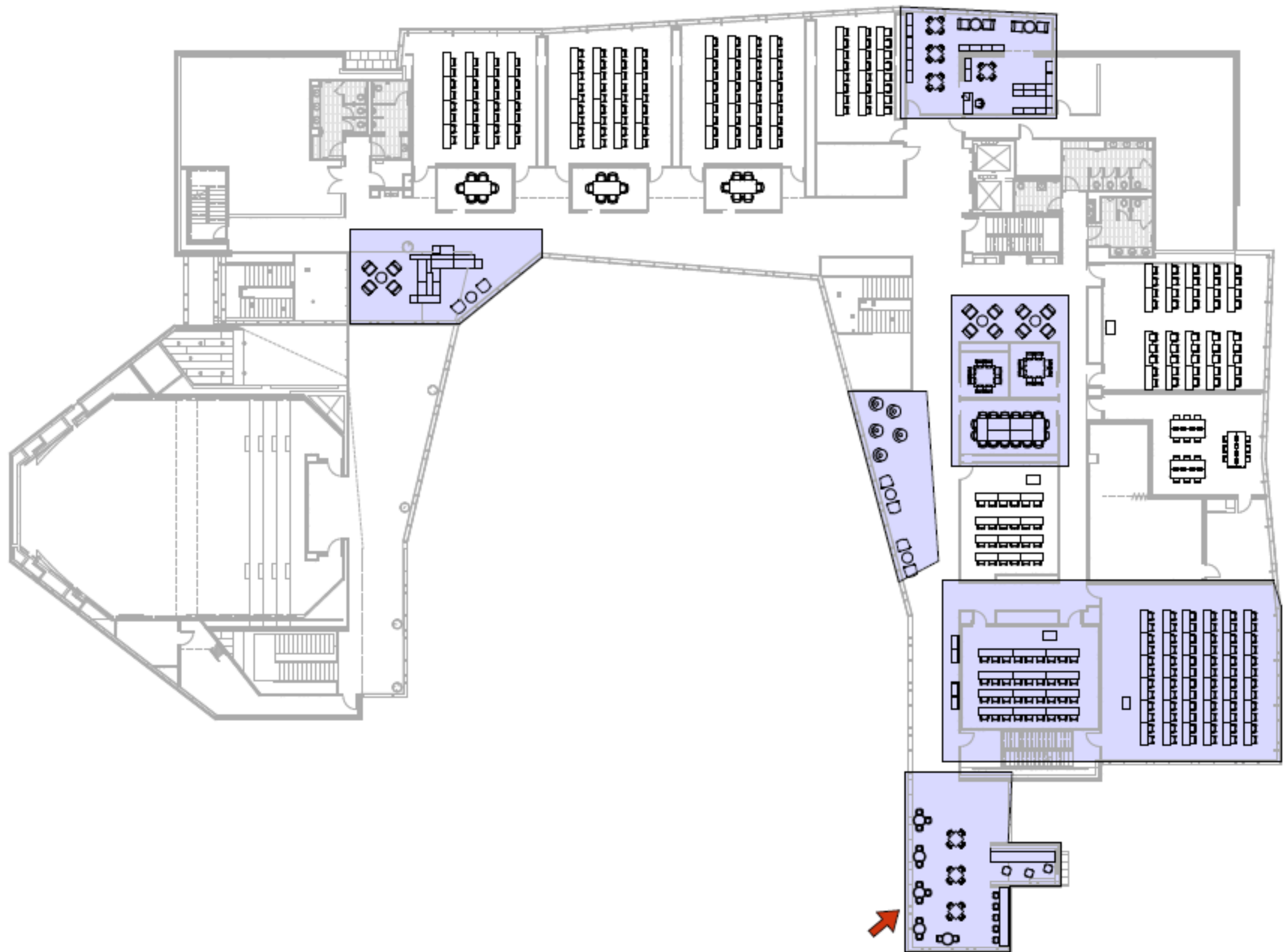
LEVEL 1 – MULTIPURPOSE ROOM



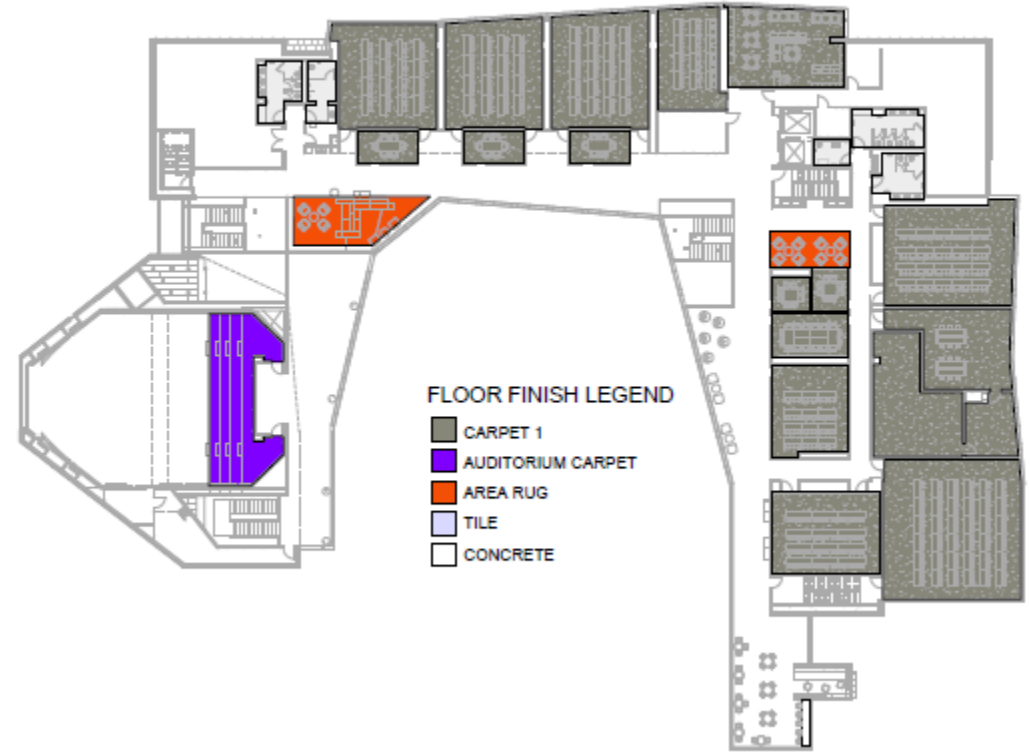
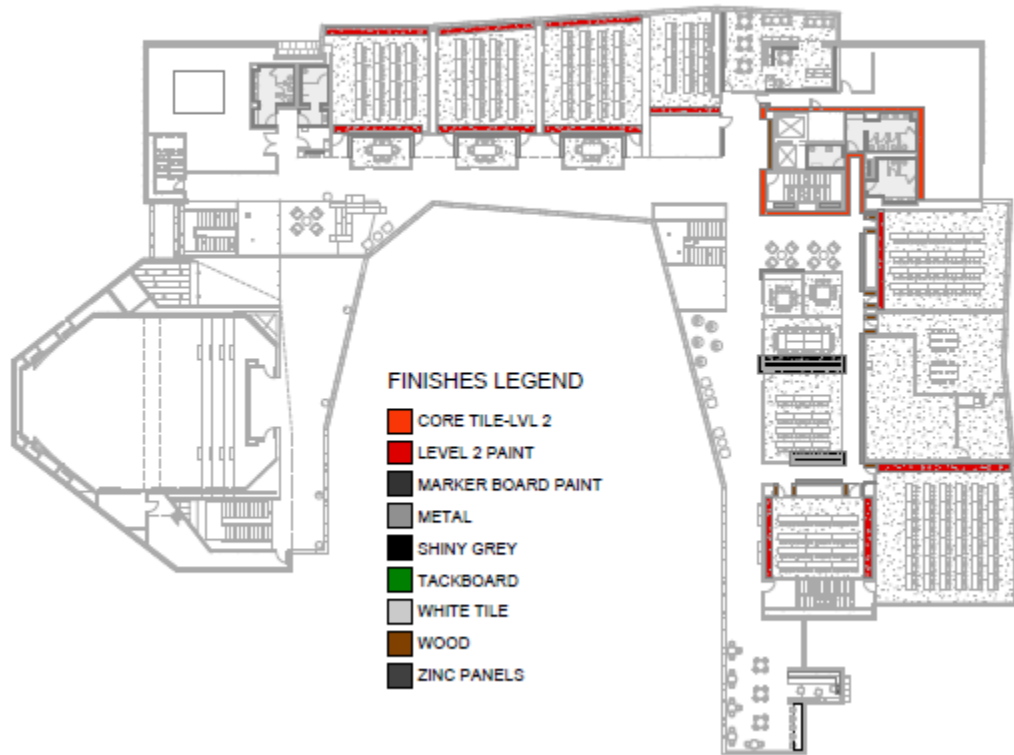
LEVEL 1 – BUSINESS CENTER



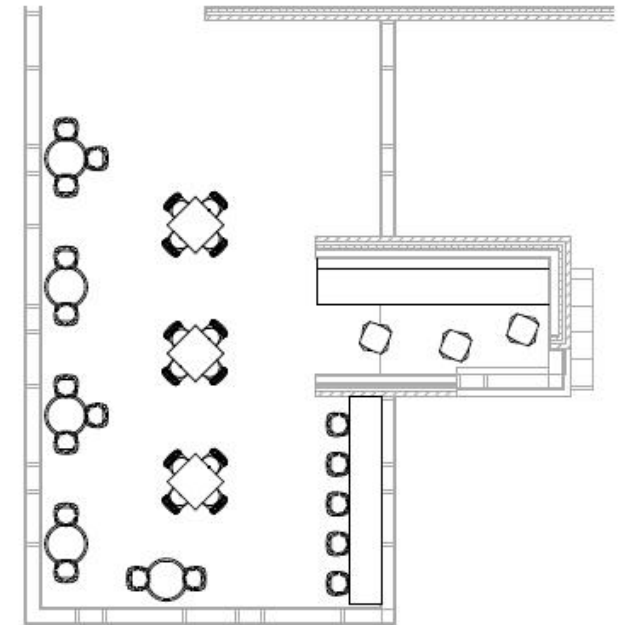
LEVEL 2



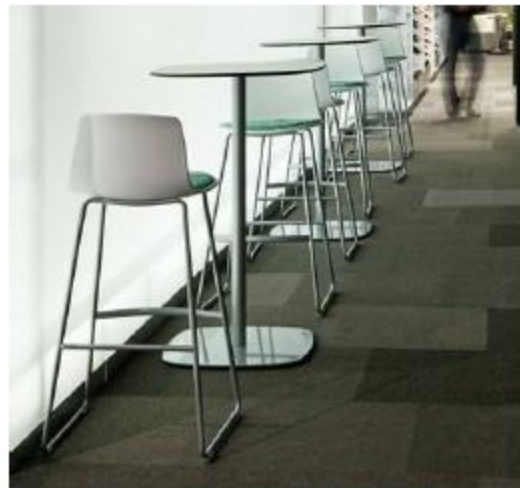
LEVEL 2 – FINISH PLAN



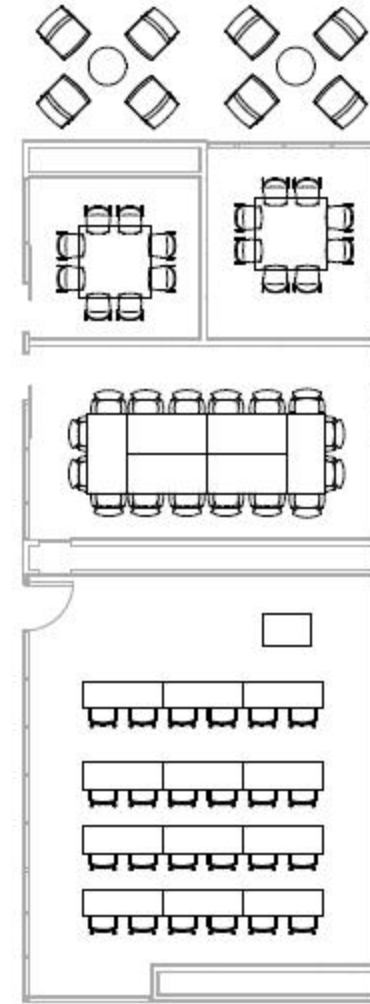
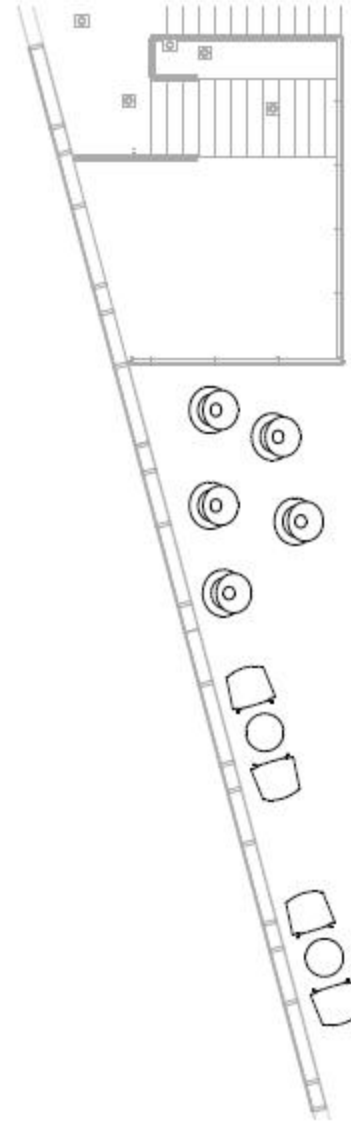
LEVEL 2 – STUDENT LOUNGE



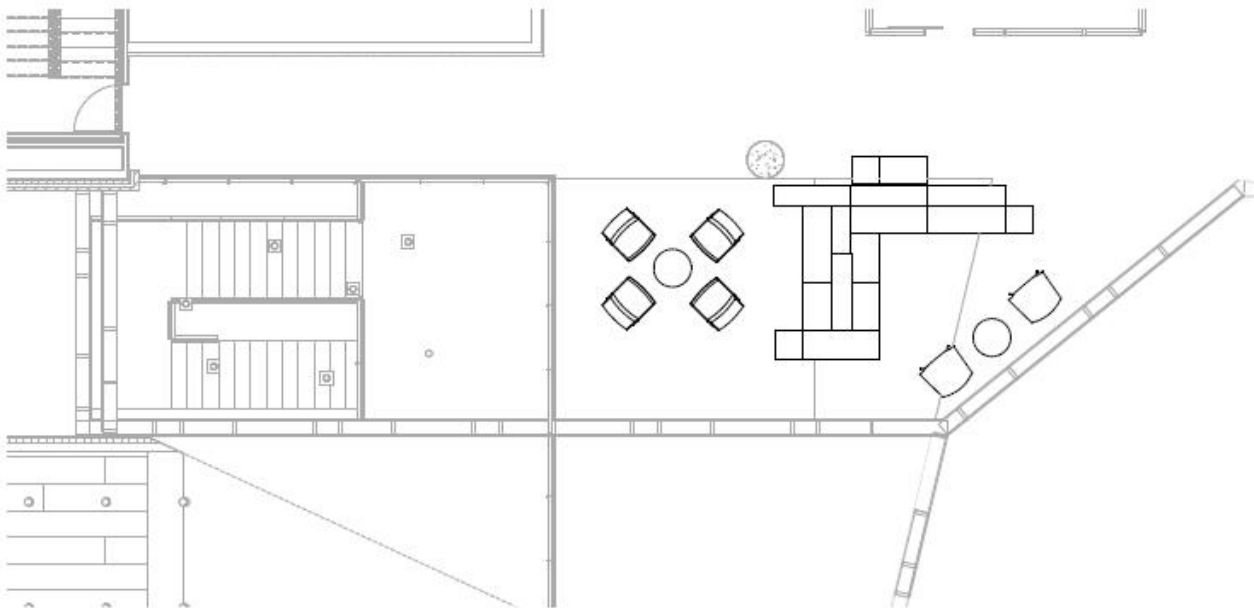
LEVEL 2 – PUBLIC SEATING



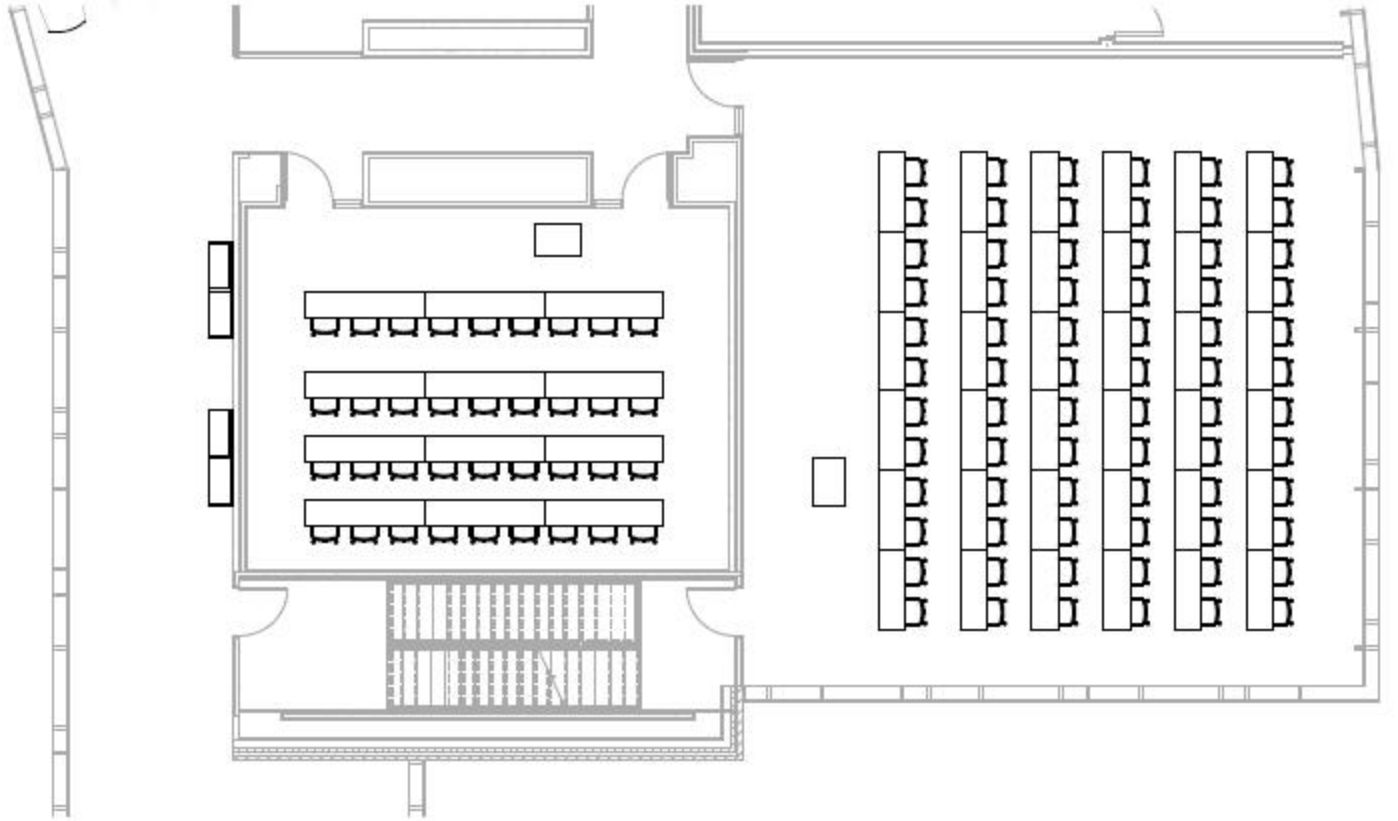
LEVEL 2 – PUBLIC SEATING



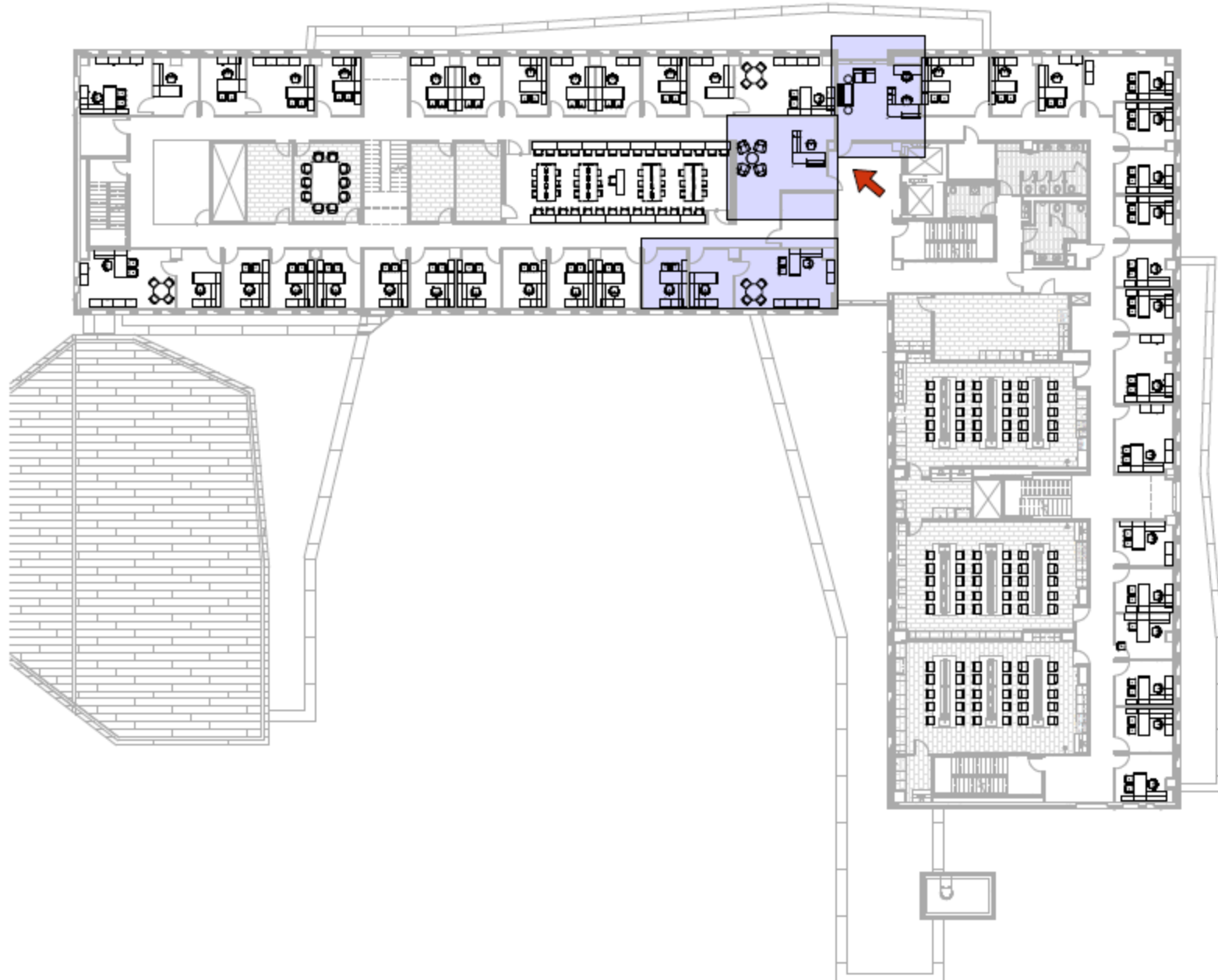
LEVEL 2 – PUBLIC SEATING



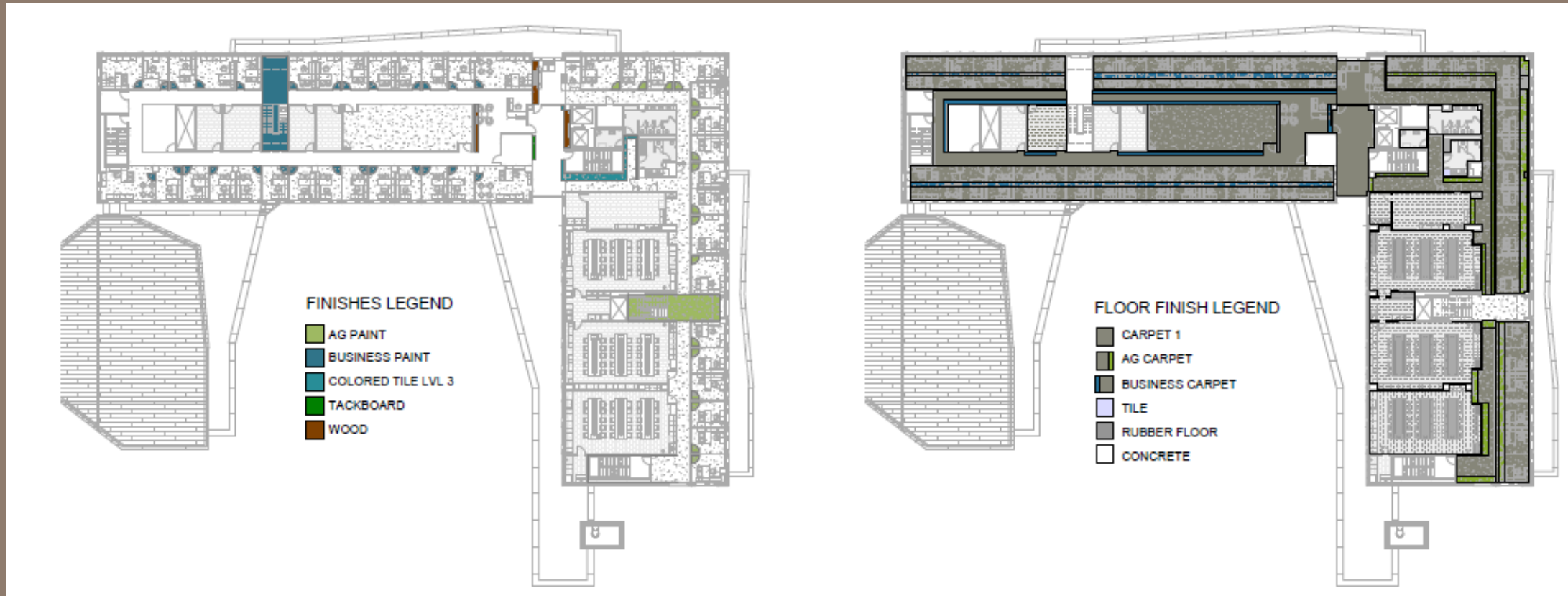
LEVEL 2 – MEDIUM CLASSROOM



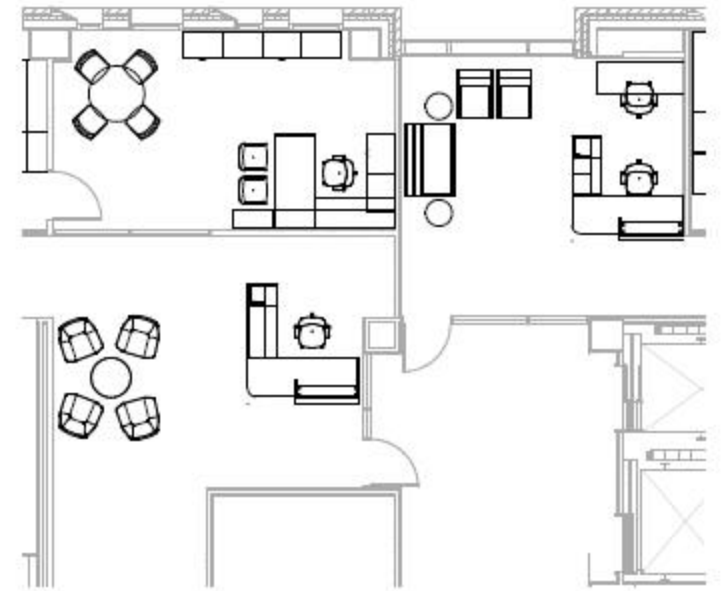
LEVEL 3



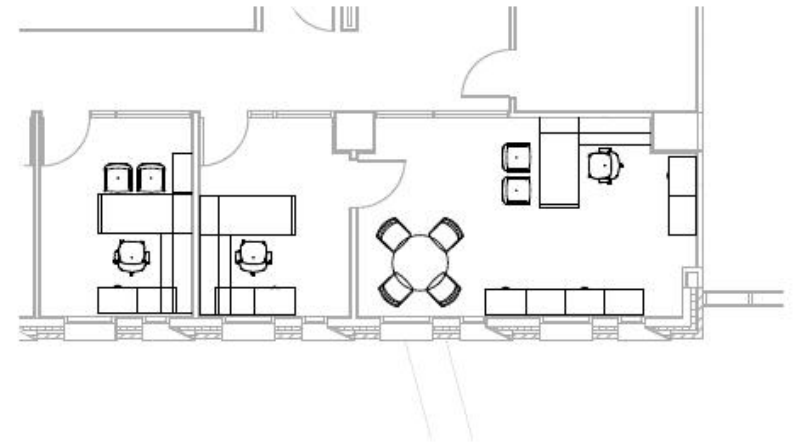
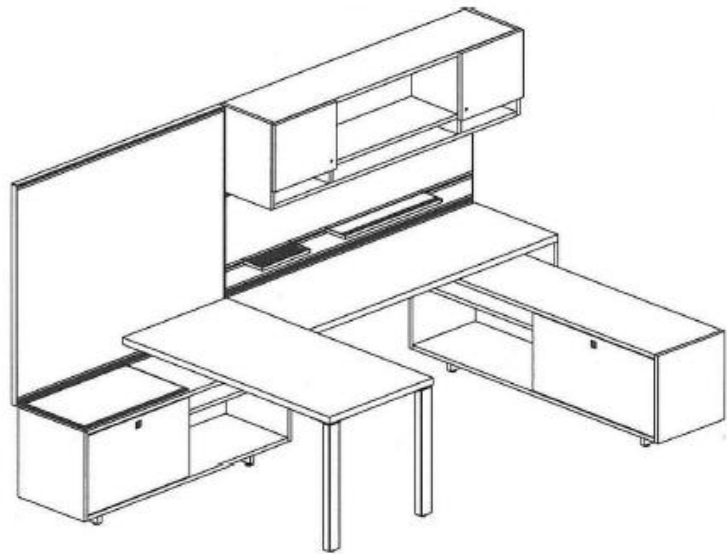
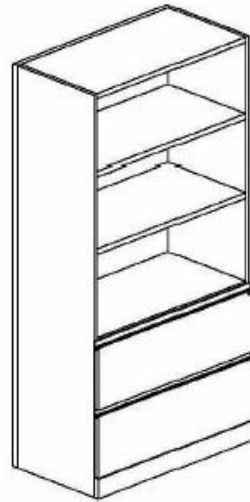
LEVEL 3 – FINISH PLAN



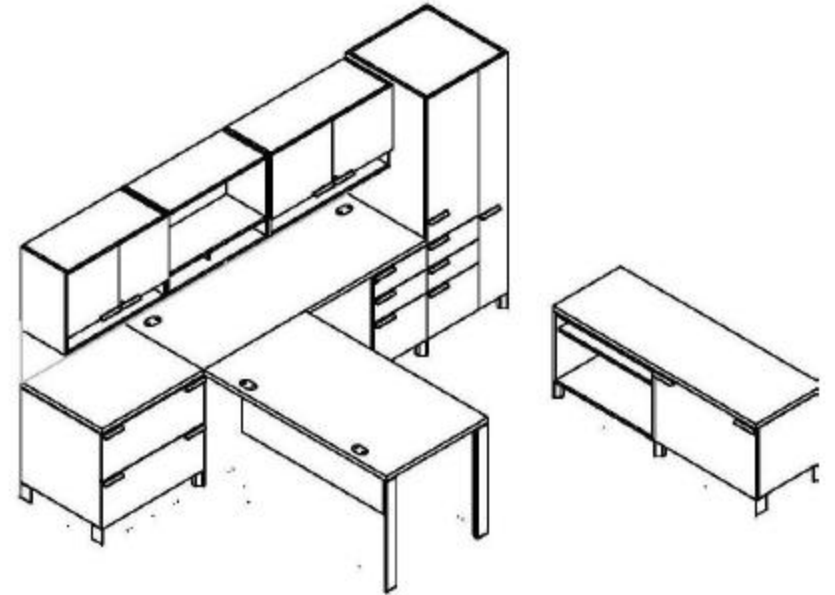
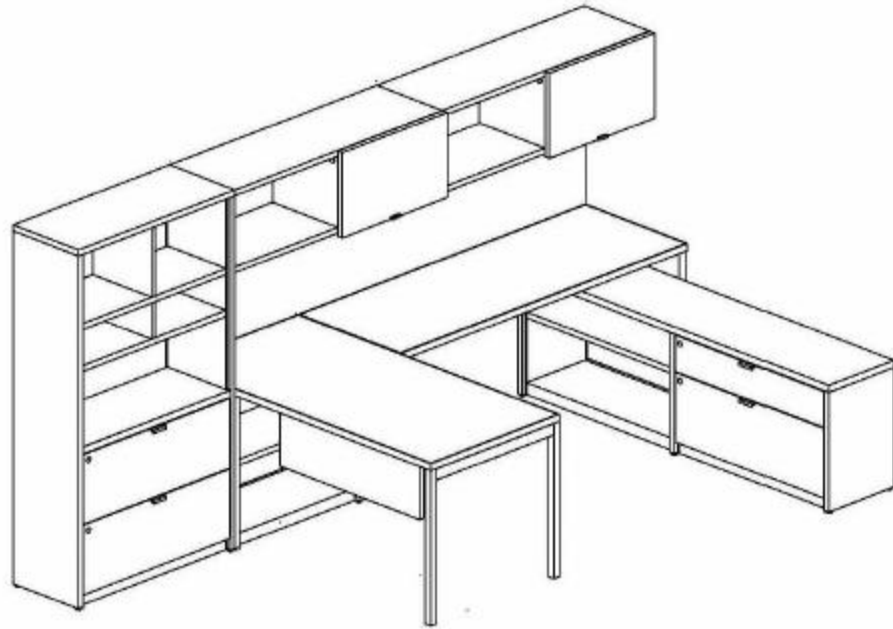
LEVEL 3 - RECEPTION



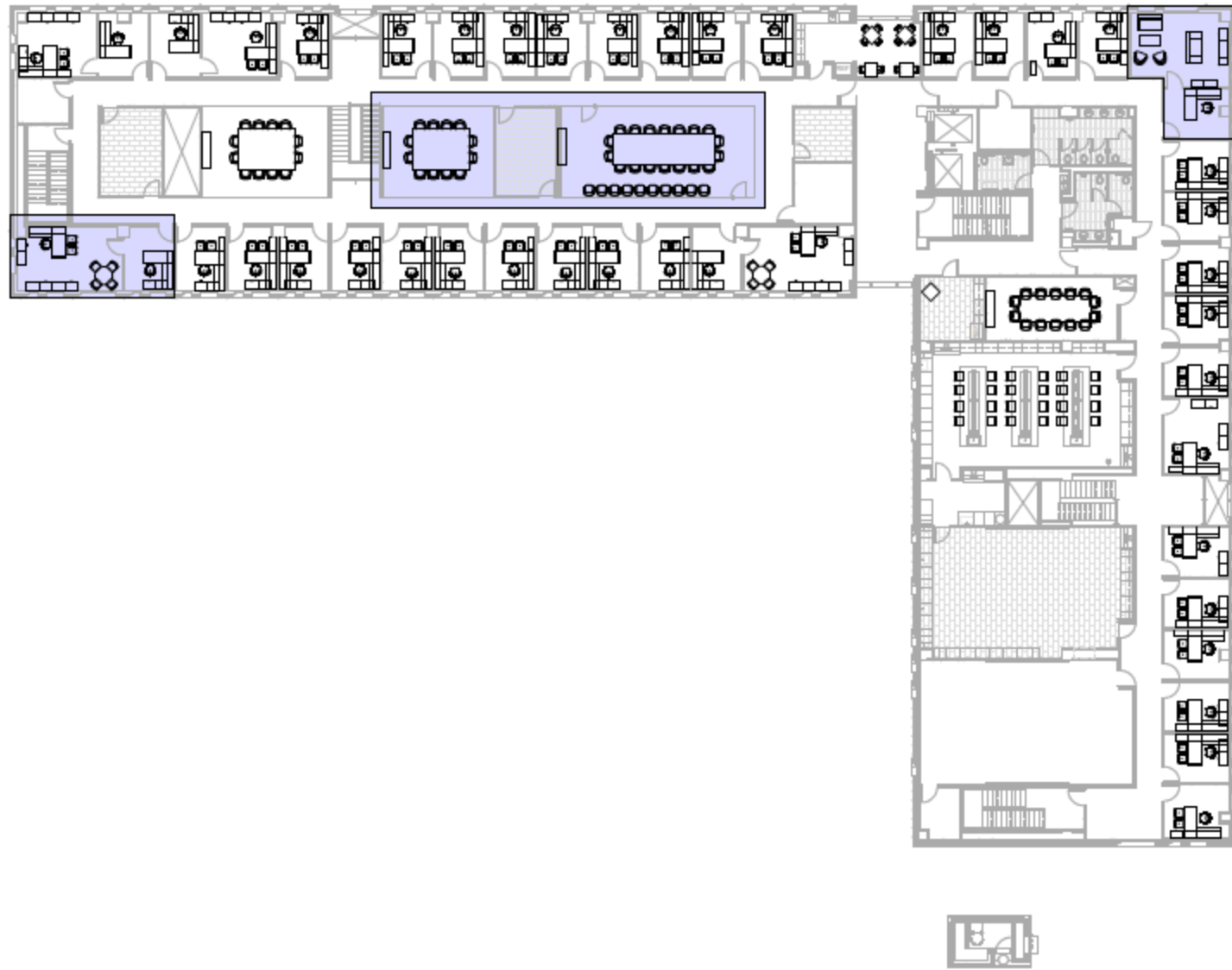
LEVEL 3 – TYPICAL OFFICE



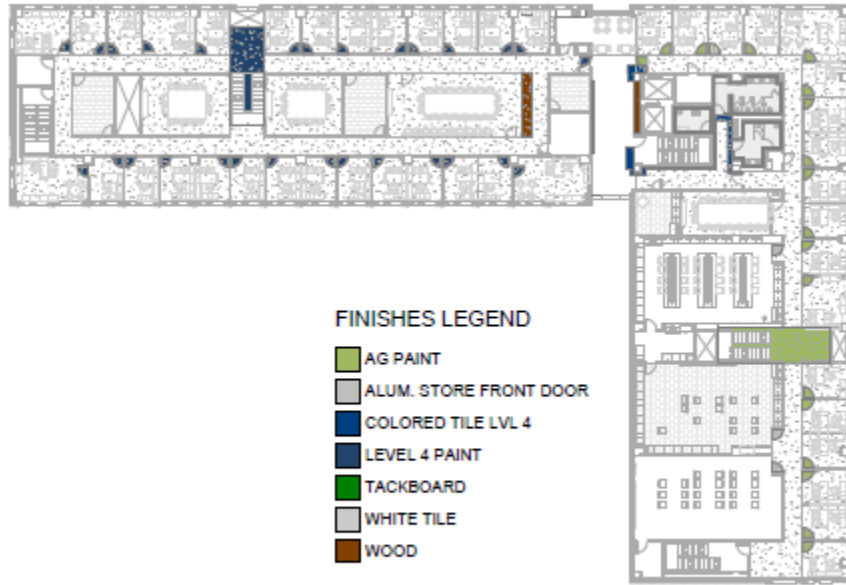
LEVEL 3 – TYPICAL OFFICE (OPTION 2)



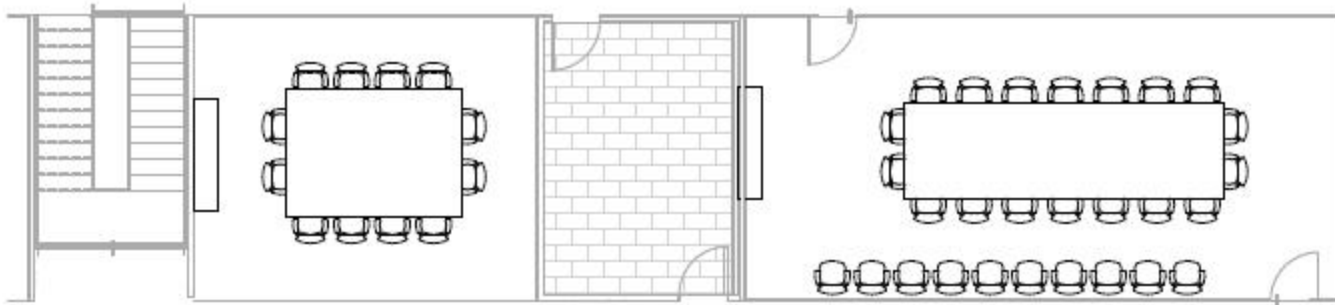
LEVEL 4



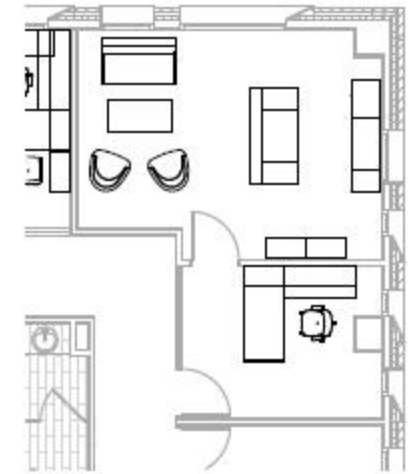
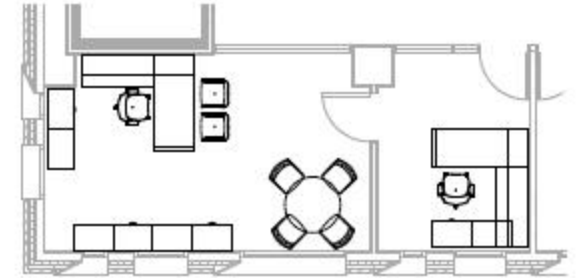
LEVEL 4 – FINISH PLAN



LEVEL 4 - CONFERENCE



LEVEL 4 – DEAN OFFICE



GUIDING PRINCIPLES

DUAL IDENTITY

NO BACK DOOR

INDOOR / OUTDOOR

CAMPUS CONNECTOR

ROOTS AND WINGS

EXPRESSED VALUES

ORGANIC AND FLEXIBLE

SET THE BAR

SUSTAINABILITY

CENTER-POINT

