



PRAIRIE VIEW
A&M UNIVERSITY
COLLEGE OF AGRICULTURE
AND HUMAN SCIENCES



United States
Department of
Agriculture



Agriculture and Natural
Resources



AG IS THE SOLUTION

April 28-29, 2023



POST-EVENT UPDATES
AVAILABLE ONLINE

NON-DISCRIMINATION STATEMENT

The College of Agriculture and Human Sciences does not discriminate against anyone regardless of their race, color, national origin, religion, sex, gender, identity (including gender expression), sexual orientation, disability, age, marital status, family/parental status, income derived from a public assistance program, political beliefs, reprisal or retaliation for prior civil rights activity, in any program or activity. Persons who require communication in a language other than English or with a disability who require alternative means of communication of program information (braille, large print, audiotape, etc) should contact Ashia Williams, LEP Coordinator at aawilliams@pvamu.edu in advance.



FIELD DAY MAP



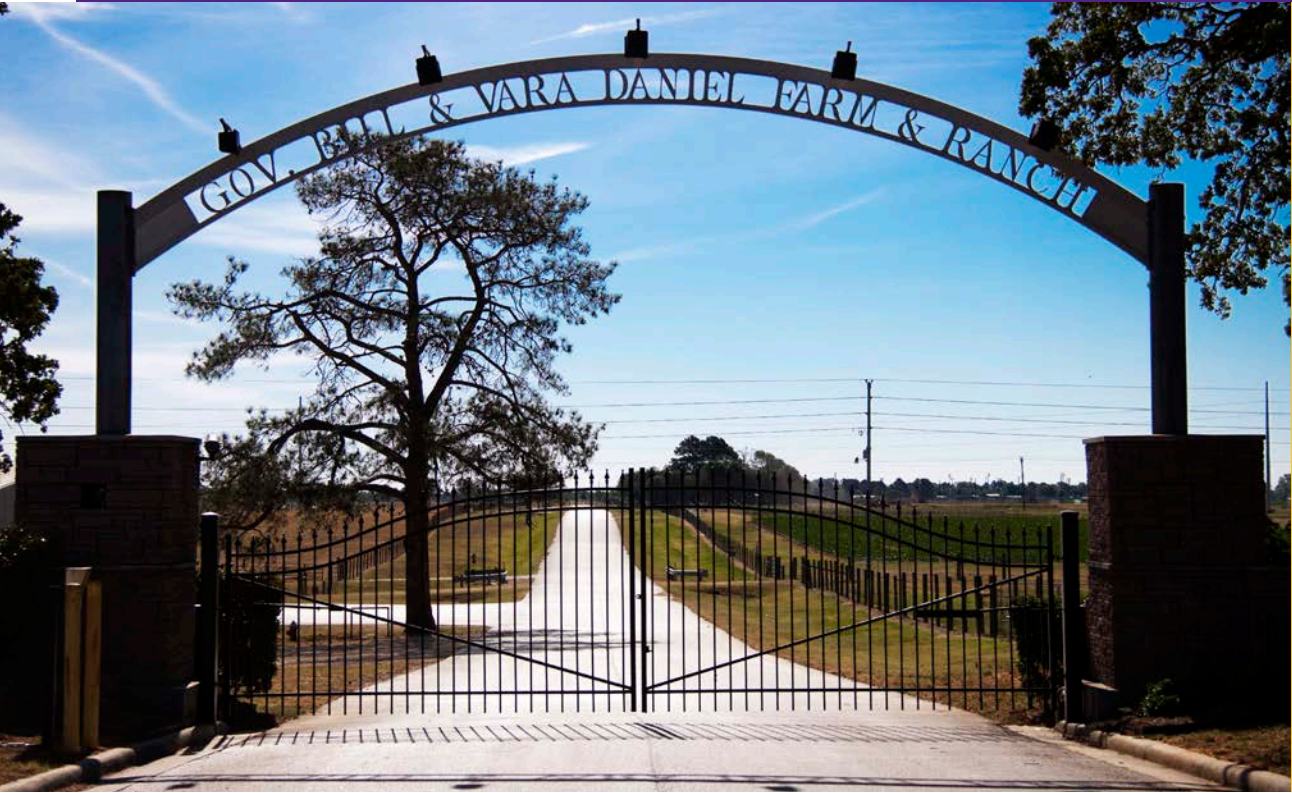
Legend

Event Locations

- 1 Carden-Waller Cooperative Extension Building
- 2 Feral Swine
- 3 Poultry Production
- 4 Get AgSmart
- 5 Climate Smart
- 6 Beef Cattle Mgmt & Production
- 7 Meat Science Center
- 8 International Goat Research Center
- 9 Forestry Session

Parking

- 12 Bus Parking
- 13 Parking lot #13
- 14 Parking Lot #14





Welcome!

As Dean of the College of Agriculture and Human Sciences (CAHS) and Director of Land-Grant Programs at Prairie View A&M University (PVAMU), I am pleased to welcome you to our annual Agriculture Field Day! We are thrilled to provide what we hope will be an educational and entertaining exhibition of the great work we do here in the College.

After a three-year hiatus due to the pandemic, the CAHS is pleased to showcase many offerings available in academics, research, extension, and the farm.

Agriculture has very broad impacts on many aspects of our everyday lives, which is why we take a holistic approach to meeting the needs of the citizens in the State of Texas.

Whether you are a K-12 or post-secondary student or educator, farmer, rancher, landowner, or a member of the community at large, Ag Field Day offers informational sessions on just about everything for just about everyone. From plants, meats, health, and wealth—to land retention, heirs' property, climate change, and disaster preparedness---for most problems of the day, agriculture is the solution. Ag Field Day gives a glimpse at some of the solutions available via the CAHS through the dedicated faculty and staff at PVAMU.

As you embark upon this Ag Field Day journey with us, may it spark your imagination and ignite your agriculture curiosity in ways you've never considered. As you consider challenges going forward, we hope you have a better understanding of how **"Ag is the Solution."**

Thank you for joining us for Ag Field Day!

Sincerely,

Gerard E. D'Souza, Ph.D.

Dean, College of Agriculture and Human Sciences
Director of Land Grant Programs

Welcome to Ag Field Day!

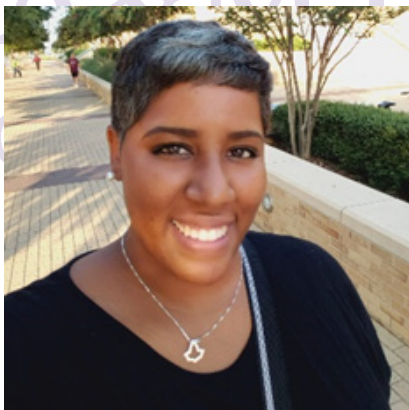
The Ag Field Day Planning Committee is comprised of the College of Agriculture and Human Sciences' faculty, researchers, specialists, agents, other professionals and volunteers representing academics, research, extension, and the farm. We have each worked diligently to plan what we hope will be both educational and enlightening.

As you visit the campus, we also hope you get a true sense of the storied history and accomplished spirit of "The Hill" during your stay. Prairie View A&M University was founded in 1876 as one of two land-grant universities in the state of Texas. It is also the 2nd oldest public institution of higher learning in the state and home to the sprawling 750-acre, Gov. Bill and Vara Daniel Research Farm & Ranch, the International Goat Research Center (IGRC), and the Small Farm Institute (SFI).

While we pay homage to our history, we do so with a nod to the future as evidenced by the workshops assembled for Ag Field Day. Climate smart agriculture, artificial intelligence, and smart agricultural technologies are three examples of the state-of-the-art innovations being utilized in the performance of cutting-edge research, rigorous academic curriculum, and client-centered outreach. We prepare for the future by facing head-on the challenges of today; agriculture plays a role in mitigating and eradicating global threats such as climate change, food insecurity, and global pandemics. As an outcome of this year's Ag Field Day, we hope you will glean no matter the problem, "**Ag is the Solution.**"

Sincerely,

2023 Agriculture Field Day Co-Chairs



Ashley James, M.S.



Angela Moore, M.B.A.

FRIDAY AGENDA

8:30-9:30 a.m. Registration

9:30-9:50 a.m. Welcome

10:10-10:55 a.m. Breakout Sessions

Group 1:

Butter Making, May Hall *PVAMU staff show off their butter-making skills in this exciting demo.*

Nutrition Fear Factor, May Hall *Is the fear of trying new foods a FACTOR for you? Find out here!*

Group 2:

Sausage Making, Meat Lab *Students will walk through the process of sausage making. You may even get a sample!*

Get Ag Smart (MS/HS), Farm *Learn how ag technology is used to improve the climate!*

Group 3:

Virtual Reality, AITC *Put on your 3D goggles and explore an aerial view of PVAMU without ever leaving the room!*

Roping Demo, Open Area in front of CARC *It's all in the flick of the wrist! Get ready to learn how to rope like a pro!*

Group 4:

Student Garden Club, Farm *Let's Get Growing! Learn from PVAMU students about growing a plant or two!*

Wellness in Houston, Farm *"What's Shaking" with PVAMU Wellness in Houston? Explore our mobile kitchen & other exciting activities!*

11:05-11:50 a.m. Breakout Sessions

Group 1:

Nutrition Fear Factor, May Hall

Butter Making, May Hall

Group 2:

Get Ag Smart (MS/HS), Farm

Sausage Making, Meat Lab

Group 3:

Roping Demo, Open Area in front of CARC

Virtual Reality, AITC

Group 4:

Wellness in Houston, Farm

Student Garden Club/Gardening, Farm

11:50 a.m.-12 p.m. Transition to Carden-Waller Extension Building

12-12:30 p.m. Closing and Program Evaluation

12:30-1 p.m. Lunch

1 p.m. Depart

SATURDAY AGENDA

7:30-8:30 a.m. Registration/Light Breakfast

8:30-9:15 a.m. Welcome

Angela Moore & Ashley James (Ag Field Day Co-Chairs)

Greetings

Gerard D'Souza, Ph.D., Carolyn Williams, Ph.D., Erdogan Memili, Ph.D., & Kwaku Addo, Ph.D.

9:15-10:15 a.m. What to Know About Heir's Property in Texas¹

Attorney Steven Hubbard, Hubbard Law Firm

10:30-11:30 a.m. Breakout Session #1

Tools You can Use in Beef Cattle Management and Production, E. E. O'banion Science Auditorium³

Sustainable Mini Farms, CEP Outreach Room¹

Predator Control - Trapping Demonstration, FARM/FIELD²

Forest Preparation, Planting & Management, FARM/FIELD⁹

Meat Lab Demonstration/Beef Carcass Fabrication, Meat Science Center⁷

Eat Smart * Being Active: 3-Can Chili Food Demonstration, CEP Demonstration Kitchen¹

WIH Mobile Unit Demonstration & Heart Health Screening, CEP Auditorium¹

Effective Virtual Communication, CEP Seminar Room A & B¹

11:45 a.m.-12:45 p.m. Breakout Session #2

Poultry Production & Management, E. E. O'banion Science Auditorium³

The Buzz on Bees and Other Pollinators for Your Farm, CEP Outreach Room³

PVAMU Feral Hog Trap Lease Program, FARM/FIELD²

Climate Smart Agriculture Practices & Benefits, FARM/FIELD⁵

Potential for Disease Prevention and Food Security through Edible Medicinal Plants, CEP Auditorium¹

Get AgSmart: Building Skills In Smart Agricultural Technologies, CEP Seminar Room A & B¹

WIH Mobile Unit Demonstration & Heart Health Screening, CEP Auditorium¹

Fashion Ambassadors Session, CEP Seminar Room A & B¹

12:45-2 p.m. BBQ LUNCH

2:15-3:30 p.m. USDA Farm Bill Update¹

Eloris Speight, Small Farm Policy Center

3:30-4:30 p.m. Breakout Sessions

Small Ruminant Management Production, E. E. O'banion Science Auditorium³

Sustainable Mini Farms, CEP Outreach Room¹

Predator Control - Trapping Demonstration, FARM/FIELD²

Climate Smart Agriculture Practices & Benefits, FARM/FIELD⁵

Meat Lab Demonstration/Beef Carcass Fabrication, Meat Science Center⁷

Get AgSmart: Building Skills In Smart Agricultural Technologies FARM/FIELD⁴

Sam's Club & 1890 Universities Foundation- Diverse Suppliers Program CEP Auditorium¹

4:30-5 p.m. Closing and Program Evaluation

GUEST SPEAKERS



Eloris D. Speight

**Socially Disadvantaged Farmers and Ranchers (SDFR) Policy Research Center
Alcorn State University**

Eloris Speight joined Alcorn State University in March 2016 as Director of the Socially Disadvantaged Farmers and Ranchers (SDFR) Policy Research Center (Policy Center). In this capacity, she leads the Policy Center in conducting research on policy impacting socially disadvantaged farmers and ranchers and making policy recommendations that will improve the success of SDFR. The Policy Center played a key role in advocating for items that are included in the 2018 Farm Bill, which benefit SDFR. Ms. Speight brings a wealth of knowledge and experience (20 plus years) in Leadership and Organizational Development. She spent 10 years as a career federal employee at the U.S. Department of Agriculture (USDA), reaching the rank of senior executive, and 20 years in the private sector (Fannie Mae) serving in key administrative positions.

At the USDA, Natural Resources Conservation Service (NRCS), Ms. Speight served as the Deputy Administrator for Management and in various Human Resources positions. She was the first Black Female to hold the position of Deputy Administrator in the 80+ year history of the Agency. As Deputy Administrator for Management, she provided agency and operational leadership for key administrative areas including human resources, finance, information technology, acquisitions, civil rights, and outreach and advocacy. Ms. Speight has a B.S. in Accounting from Hampton University, an MBA-Finance from the University of Maryland and a M.A. in Human Resources Development from George Washington University. She completed her course work towards a Doctorate in Education and Human Development at George Washington University (ABD).



Stephen L. Hubbard

**Principal Attorney
Hubbard Law Firm**

Attorney Stephen L. Hubbard is Principal with Hubbard Law Firm in Tyler, Texas where his practice specializes in Probate and Estate Planning. Stephen attended Prairie View A&M University (PVAMU) where he graduated magna cum laude with a Bachelor of Science degree in 1987. He attended South Texas College of Law where he received the Doctorate of Jurisprudence in 1990. Stephen was admitted to practice law in Texas by the Supreme Court of Texas in 1991 and licensed to practice in the United States District Court for the Eastern District of Texas in 1992.

Prior to going into private practice, Attorney Hubbard worked for the Attorney General of Texas Child Support Division and as Senior Regional Attorney for Area V. In 2021, Hubbard began collaborating with Agriculture and Natural Resources (AgNR) in the Cooperative Extension Program (CEP) as a partnering attorney with its Sustainable Forestry and African American Land Retention Program (SFLR). In this role, he has led seminars on heir property, clearing of title, wills and estate planning which have been instrumental in helping landowners address their most pressing concerns related to heir property. Attorney Hubbard has served on numerous boards over the years, including the Boys & Girls Club of East Texas, Boy Scouts of America, The University of Texas Health Science Center at Tyler's Institutional Review Board and Cancer Committee Treatment Board.

SESSION DESCRIPTIONS

What to Know About Heirs Property

Stephen Hubbard: Hubbard Law Firm | Heirs property laws and regulations can seem complicated. Attorney Stephen Hubbard will provide practical information to help you and your family understand the laws in Texas and how everyone can work together to plan and manage your family land.

USDA Farm Bill Update

Eloris Speight | The Socially Disadvantaged Farmers and Ranchers (SDFR) Policy Research Center specializes in policy research impacting socially disadvantaged farmers and ranchers. The mission of the Policy Center is to conduct research, analyze policy and make recommendations seeking to achieve equitable and economic integration of USDA programs and policies for socially disadvantaged farmers, ranchers, communities, and rural landowners.

Tools You can Use in Beef Cattle Management and Production

Bill Foxworth, Ph.D., Juan Romano, DVM, MS, Ph.D. | Join us at the chute! Many advances have been made in Beef Cattle Production and Management. Come chat with our PVAMU researchers and extension professionals to learn practical information regarding beef cattle production.

Sustainable Mini Farms

Jeremy Peaches, Nathan Hermond, Peter Ampim, Ph.D. | The session will discuss the importance of developing or integrating a sustainable mini farm. Topics include urban agriculture, aquaponics/hydroponics, solar, raised beds, water catchment, composting, and indoor agriculture elements. This indoor/outdoor session will include plant giveaways.

Predator Control - Trapping Demonstration

Derrick Banks & Animal and Plant Health Inspection Service (APHIS) | Feral hogs pose serious dangers to humans, pets, crops, land, and property. They can be especially dangerous to children and pets while also wiping out entire crops and destroying your lawn or land. Under the guidance of AgNR Program specialist Derrick Banks, farmers will learn about using advanced trapping techniques to remove several the hogs at once, so you can begin the process of restoring your land and property.

Forest Preparation, Planting & Management

Elliot Washington, Ph.D. & Texas A&M Forest Service (TAMFS) | Session will include staff from TAMFS to speak about best management practices in forestry and what services the agency provides. They will also discuss cost share programs and demonstrate proper forest management for private landowners.

Meat Lab Demonstration/Beef Carcass Fabrication

Lea Ann Kinman, Ph.D. & James Smith | Join Meat Scientist and Research Associate Professor, Dr. Kinman for a meat cutting demonstration of beef primals to retail cuts. Come learn how a full beef carcass becomes the meat items found at a grocery store. Don't miss the action in this hands-on, up close beef cutting demo. Registration and proper dress code required for participation.

Eat Smart * Being Active: 3-Can Chili Food Demonstration

Vida Harrison, Jacquelyn White, Ed.D. | Eating Smart * Being Active is an evidence-based, healthy eating and active living curriculum. Members of our Family and Community Health (FCH) Unit share tips and tricks to eating and living better all while showing you how to prepare a healthy and tasty 3-can chili.

Wellness in Houston Demonstration & Heart Health Screening

Nkem Anyasinti | “What’s Shaking” with PVAMU Wellness in Houston! Explore our mobile kitchen unit while we introduce you to our community approach to addressing health disparities and food insecurities in limited-resource communities.

Effective Virtual Communication

4-H Tech Change Makers | This workshop will focus on helping adults to effectively communicate online using email or video conferencing. The 4-H Tech Changemaker ambassadors will have fun and engaging activities to explore how to use the internet safely and avoid potential online scams.

Poultry Production & Management

Loyce Gayo | This workshop will feature local poultry co-op farmers providing their perspective on flock management practices, coop design, and more!

The Buzz on Bees and Other Pollinators for Your Farm

Nathan Hermond, Jeremy Peaches | Attendees will be introduced to native bee species and their benefits in agriculture and the environment. This presentation emphasizes the necessity of alternative pollinators in order to maintain crop production and provides an understanding of how native animals and plants must be the focus in efforts to boost conservation practices.

PVAMU Feral Hog Trap Lease Program

Derrick Banks & Animal and Plant Health Inspection Service (APHIS) | Under the guidance of AgNR Program Specialist Derrick Banks learn more about the PVAMU Hog Trap Lease Program to assist producers in feral hog management. Feral hogs pose serious dangers to humans (especially children) and pets while also wiping out entire crops and destroying your lawn or land.

Climate Smart Agriculture Practices & Benefits

Elliot Washington, Ph.D., Ram Ray, Ph.D. | Session will include a presentation and demonstration at the climate smart testbed. There will also be a display of a solar drier developed by PVAMU and the University of Houston.

GetAgSmart: Building Skills In Smart Agricultural Technologies

Ali Fares, Ph.D., Ripendra Awal, Ph.D. | This engaging session will demonstrate SmartAg technologies such as innovative data collection techniques using drones, soil moisture sensors and Green House Gases Emission monitoring sensors and their applications for agricultural production and natural resources management.

Potential for Disease Prevention and Food Security through Edible Medicinal Plants

Aruna Weerasooriya, Ph.D. | PVAMU researchers are currently exploring a variety edible, medicinal plant species that can be grown in Texas, with the goal of introducing them to farmers and consumers. Medicinal vegetables are rich in bioactive compounds that have demonstrated anti-inflammatory, antioxidant, and anti-cancer properties. These compounds help to reduce oxidative stress, which can lead to chronic diseases such as cancer, cardiovascular disease, and diabetes.

Fashion Ambassador Session

4-H Team | The Fashion Ambassadors will lead a hands-on project in creating “No Sew Pillows.” Make comfortable pillows without sewing machines, thread, or getting poked by needles. This activity will be fun, and participants will be able to do this as an individual, or family. All ages are encouraged to participate!

Small Ruminant Management Production

Bill Foxworth Ph.D., Scott Horner, Juan Romano, DVM, MS, Ph.D. | Learn about the latest research and practical management strategies for goat producers from our researchers at the PVAMU International Goat Research Center (IGRC). Dairy & Meat goat production will be discussed.

Sam's Club & 1890 Universities Foundation- Diverse Suppliers Program

Quintin Gray & Evan Caselton | Sam's Club is committed to including diverse growers in its corporate supply chain and has engaged with the 1890 Universities Foundation as a trusted ally and connector to outreach and source qualified diverse producers. Quintin Gray, Agriculture Advisor for the Foundation and Evan Caselton, Merchant for Sam's Club, will talk to farmers about how they can become Sam's Club suppliers under Sam's Club Diverse Supplier Initiative.



GENERAL INFORMATION: COLLEGE OF AGRICULTURE AND HUMAN SCIENCES



The College of Agriculture and Human Sciences (CAHS) operates in the **land-grant tradition** of providing teaching, research, and service through its **academics**, **research**, and **extension** components. We are the **primary advocate** in Texas for **underserved** and **underrepresented** populations and limited resources clientele.

ACADEMICS

At Prairie View A&M University, we take pride in our panther's academic success in their field of study. We offer courses that encourage our students to have a well-rounded degree plan that includes hands-on experience. Whether in the food lab, meat lab, or on the farm, students will engage in experiential learning using different skill sets that best suit their career path.

Students will journey through their studies of animals, food and soil sciences, environmental resources, and business practices to immerse themselves in the world of Agriculture. Students who major in Human Nutrition and Foods will acquire the skills needed for careers in dietetics, nutrition, or health professions in graduate and professional studies.



RESEARCH

The Cooperative Agricultural Research Center (CARC) is the research component of the College of Agriculture and Human Sciences. Research within the unit addresses five systems: Animal Systems, Plant Systems, Food Systems, Natural Resources and Environmental Systems, Social Systems and Allied Research. CARC also includes the International Goat Research Center (IGRC), Integrated Food Security Research Center (IFSRC), Meat Science Center, Poultry Center, and Gov. Bill and Vara Daniel Farm and Ranch.



EXTENSION

The Cooperative Extension Program (CEP) is operated through the Prairie View A&M University Land Grant in partnership with the federal, state, and local governments. The mission of CEP is to respond to the needs of underserved Texans through learning opportunities that empower families, promote agriculture, strengthen communities, and foster leadership development in youth.

Cooperative Extension educators or agents translate science for the public, engage the public to act, prepare people for a better life, provide rapid response in disasters, develop partnerships, and connect people online. CEP is in 56 counties with an expansive community of volunteers who assist in extending programs under training and direction from Extension agents. The strength of Extension is county-based education in Agriculture and Natural Resources, 4-H Youth Development, Community and Economic Development, and Family and Community Health.



SPECIAL ACKNOWLEDGMENTS

Thank you to our session presenters who provided exceptional educational opportunities for producers and families of Texas.
A special thank you goes out to our spotlight speakers today, Attorney Stephen Hubbard and Ms. Eloris Speight.
Thank you for traveling to share your knowledge with our participants.

CO-CHAIRS

Ashley Pellerin James, Extension
Angela Moore, Extension

LEADERSHIP TEAM

Gerard D'Souza, Ph.D., CAHS
Kwaku Addo, Ph.D., Academics
Carolyn Williams, Ph.D., Extension
Erdogan Memili, Ph.D., Research
TeKedra Pierre, IISC
Ashwani Srivastava, AITC
Vanessa Wright, Fiscal
Kimbria Worley, Human Resources

PLANNING COMMITTEE MEMBERS

Adela Jackson , Extension	Joshua Rieger , AITC
Adeola Taife Aderinto , AITC	LaBeaula Times , IISC
Carolita Solomon , Research	Pascale Mondesir , IISC
Chandra Adams , CAHS	Porter Chase , AITC
Diane Turner , Extension	Rozenia Toney , Extension
Dwight Rhodes , Farm	Ryan Harris , AITC
Ebony Ohen , IISC	Samuel Sampson, Ph.D. , Extension
Elaine Shafer , Research	Steven Berry , IISC
Inez Simien , Academics	Trissy McCoy , Extension
Jacklyn Sanders, Ph.D. , Academics	Yolanda Jones , Academics

EXHIBITORS

National Women In Agriculture - Passion Garden • Wellness in Houston • USDA Natural Resources Conservation Service
USDA Farm Service Agency • Get AgSmart • PVAMU Human Resources
Sam's Club & 1890 Universities Foundation- Diverse Suppliers Program • 4H Tech Changemakers Program • 100 Ranchers, Inc.
Texas Coalition of Rural Landowners • National Center for Appropriate Technology • The Good Shepard @ Eden Farms

[illegible]

[illegible]

Keep up with **CAHS**



**PRAIRIE VIEW
A&M UNIVERSITY**
COLLEGE OF AGRICULTURE
AND HUMAN SCIENCES

pvamu.edu/cahs

FOLLOW US
@pvamucahs

