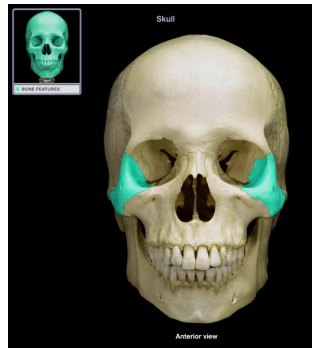
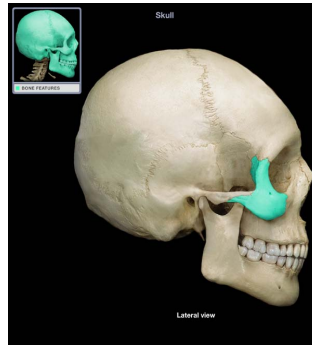


Zygomatic (Anterior view)



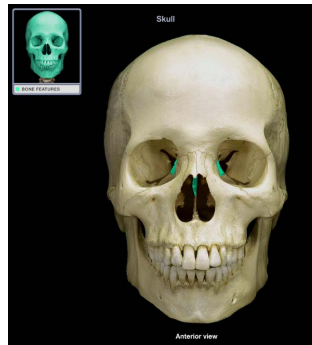
a pair, 2 bones
total

Zygomatic (lateral view)



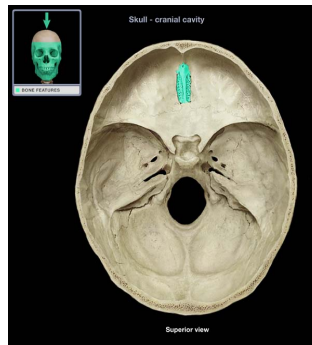
2 bones/pair

Ethmoid (anterior view)



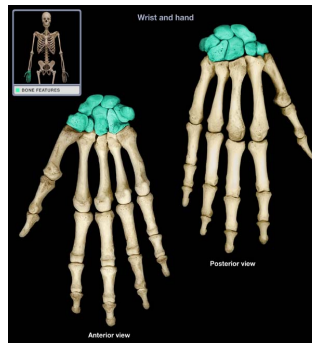
1 bone

Ethmoid (superior view)



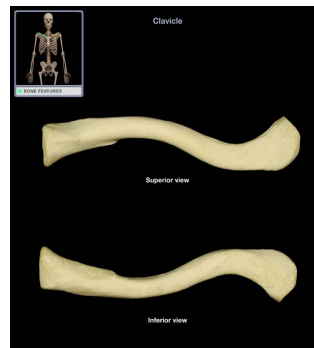
1 bone

Carpal bones



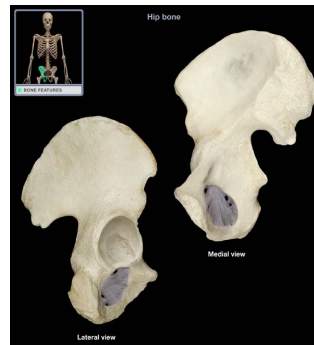
16 bones total

Clavical



2 bones

Coxal (hip) bone



2 bones

Femur



2 bones

Fibula



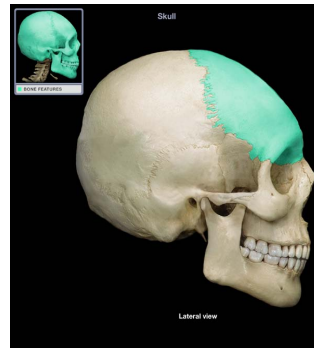
2 bones

Frontal bone (anterior view)

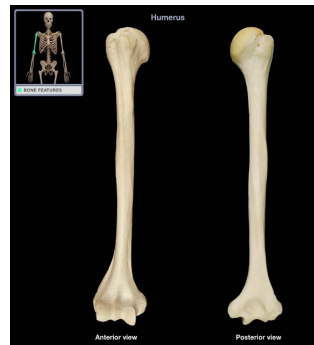


1 bone

Frontal bone (lateral view)

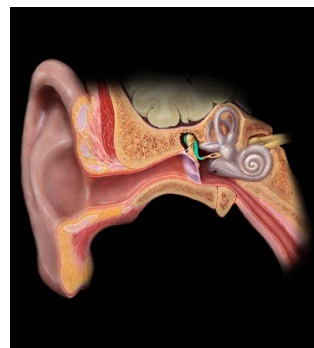


Humerus



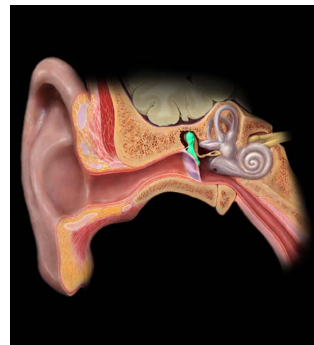
2 bones

Incus



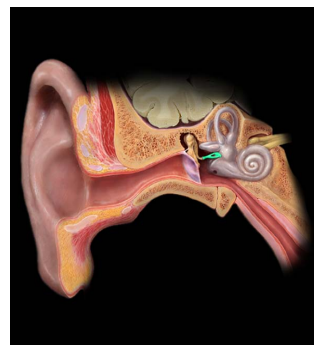
Second hearing
bone in ear

Malleus



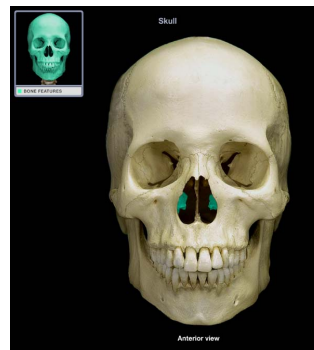
First hearing bone
in ear

Stapes



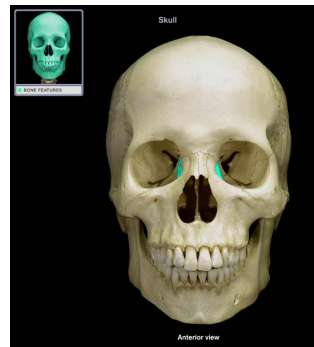
Third hearing
bone in ear

Inferior Nasal Concha



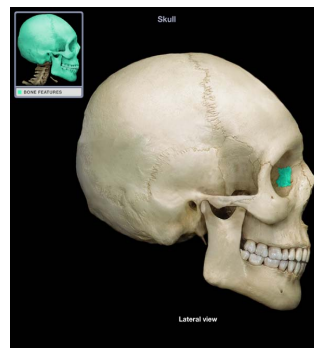
2 bones bottom of
nasal canal

Lacrimal bone



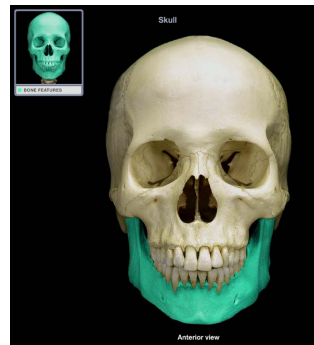
inside of eye
socket, beside
nasal bones

Lacrimal bone (lateral view)



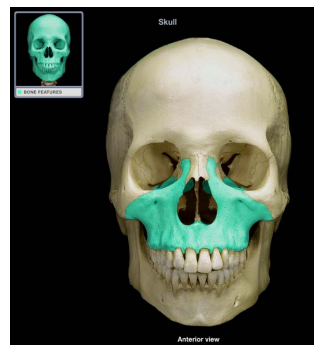
2 bones

Mandible



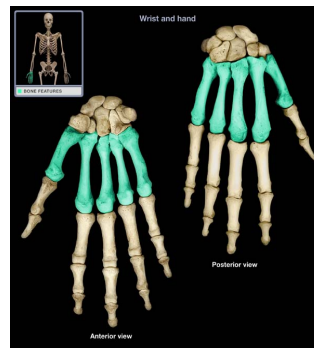
1 bone

Maxilla



2 bones fused
together

Metacarpals



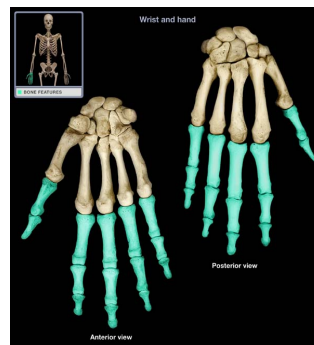
10 metacarpal
bones total in
hands

Metatarsals



10 metatarsal
bones total in foot

Phalanges of fingers



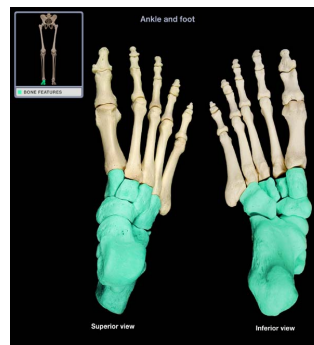
28 phalanges total
in fingers

Phalanges of toes



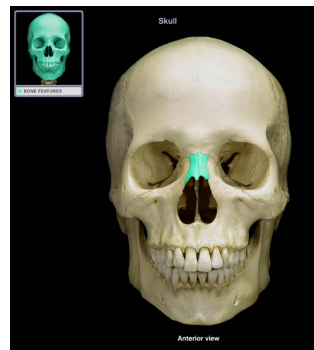
28 phalanges total
in toes

Tarsal bones



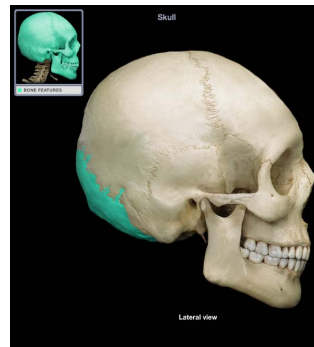
14 Tarsals total in
feet

Nasal bone



2 bones

Occipital



single bone in
inferior/posterior
of skull

Palatine bone (inferior view)



2 bones

Parietal bone


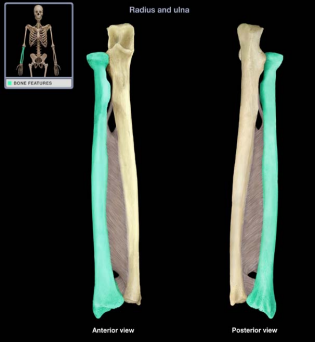
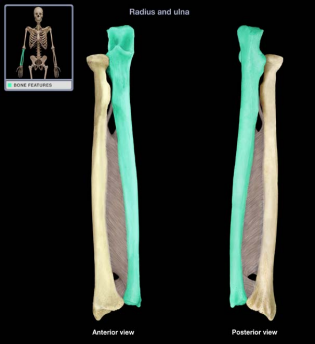
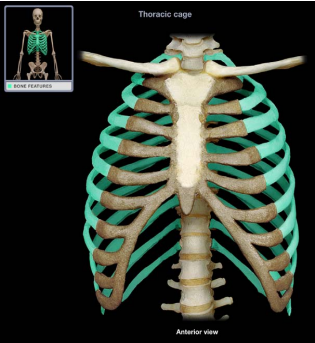
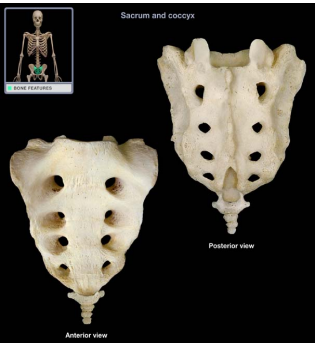


2 bones at top of
skull

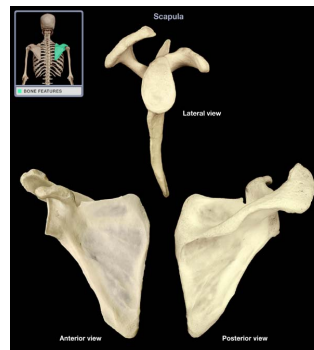
Parietal (lateral view)



2 bones on either
side of skull

| | |
|----------------------------|--|
| <p>Patella</p> |  <p>2 bones, one anterior of each knee</p> |
| <p>Radius</p> |  <p>2 bones total, one lateral of ulna</p> |
| <p>Ulna</p> |  <p>2 bones total, one medial of radius</p> |
| <p>Ribs</p> |  <p>24 ribs total</p> <p>14 true ribs</p> <p>10 false ribs</p> <p>4 of 10 false ribs are floating ribs</p> |
| <p>Sacrum & Coccyx</p> |  <p>Sacrum is 3-5 bones fused together</p> <p>Coccyx is inferior to sacrum, and is also a few bones fused together</p> |

Scapula



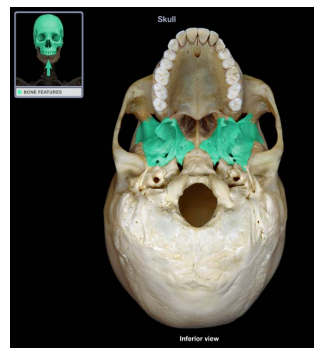
2 bones where
humerus meets
the shoulders

Sphenoid bone

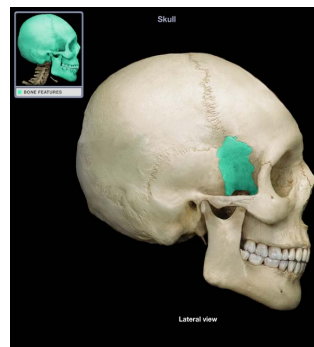


Rear of eye
socket, is one
bone

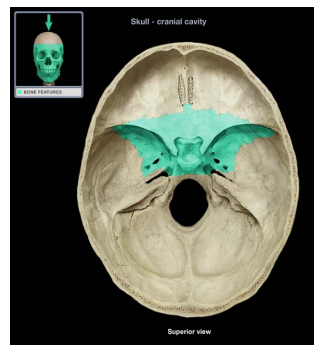
Sphenoid (inferior view)



Sphenoid (lateral view)

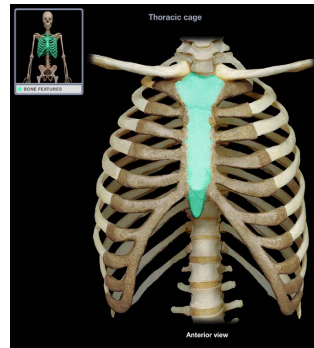


Sphenoid (superior view)



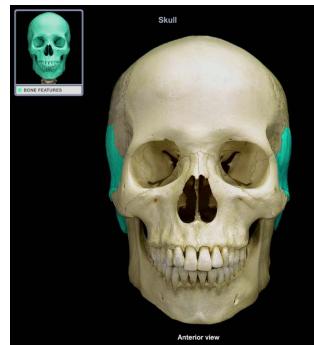
The sphenoid also
surfaces the
bottom of the
brain

Sternum



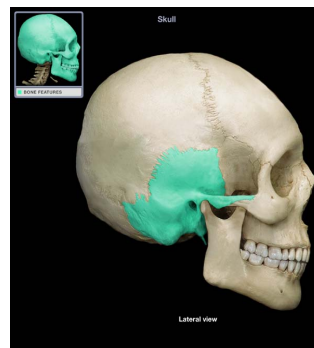
Where ribs meet
in center of
thoracic

Temporal bone



2 bones, one on
either side of skull

Temporal bone (lateral view)



Tibia



Tibia is medial to
Fibula

Fibula



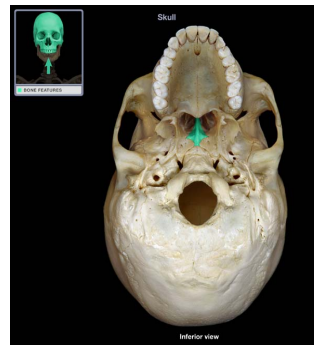
Fibula is lateral to
Tibia

Vomer



Bone in very center of nasal cavity

Vomer (inferior view)

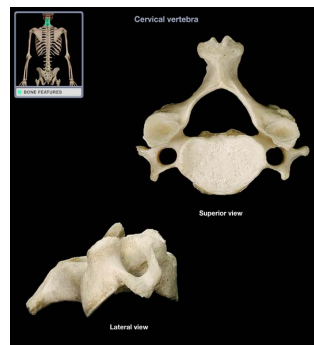


Divides nasal between left and right sections

Hyoid

Inferior to mandible, in front of throat

Cervical vertebrae



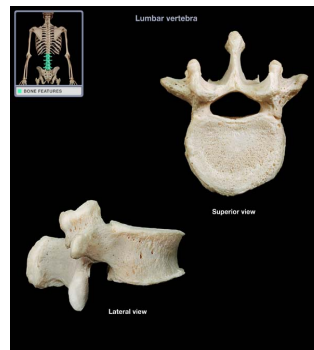
C1 - C5

Thoracic vertebrae



T1 - T12

Lumbar vertebrae



L1 - L5