

**Excellence  
Lives Here**

PRAIRIE VIEW A&M UNIVERSITY



PRAIRIE VIEW A&M UNIVERSITY  
SCHOOL OF ARCHITECTURE

*Design your future @ pvamu.edu/soa*



# School of Architecture Strategic Plan

**Journey to Eminence 35**

**Strategic Plan & Alignment Update**

Dean Ikhlas Sabouni



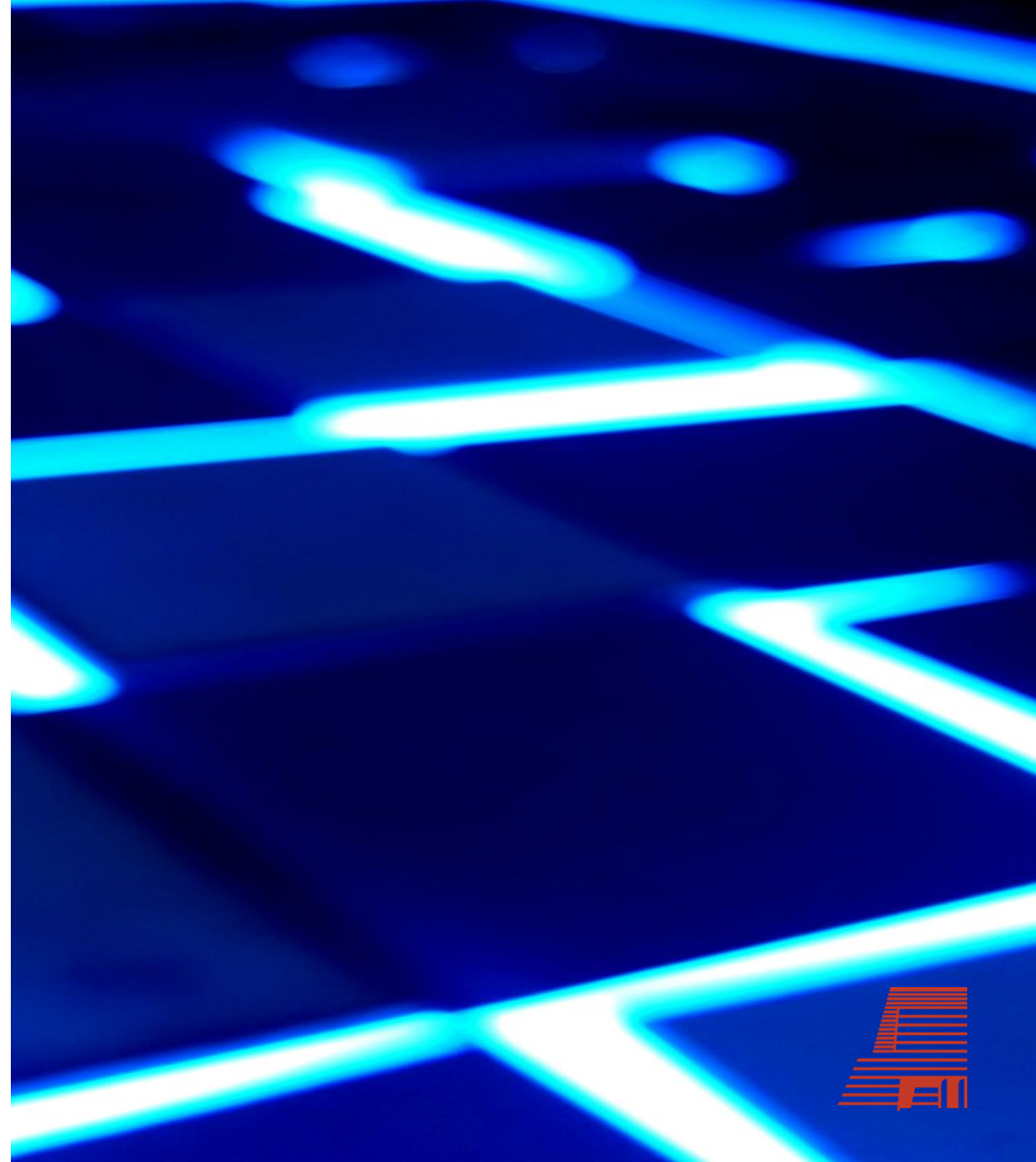
## SOA Mission

The School of Architecture prepares graduates in Architecture, Construction Science, Community Development Planning, and Digital Media Arts to address design and planning challenges at the local, national, and international levels. Success is achieved by encouraging innovative research, advancing knowledge through interdisciplinary collaboration, utilizing state-of-the-art technology, and focusing on professional and leadership development.



## SOA Vision

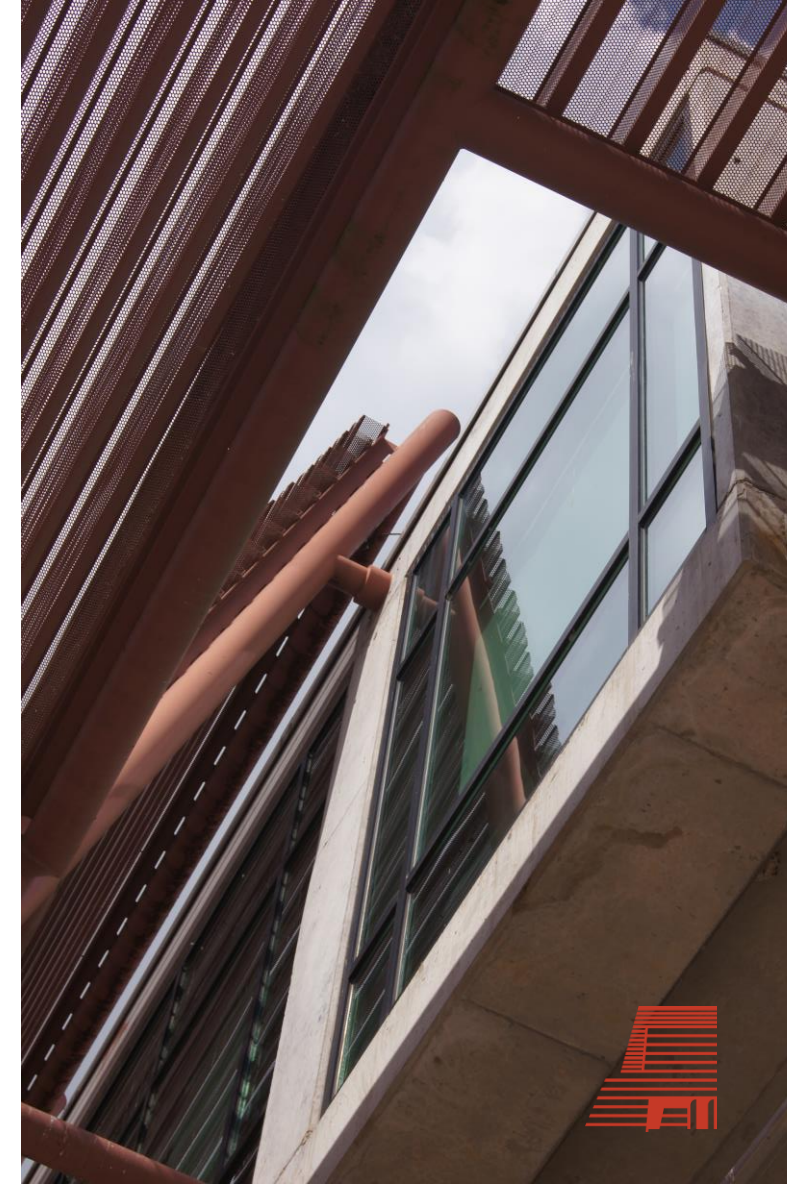
The School of Architecture graduates will be equipped to shape the future as visionary professionals, leaders, and scholars in an evolving world addressing the complexities of the built, natural, and virtual environment.



## SOA Principles of Community

### **ONE** | Investing in Faculty, Staff, and Student Performance and Professional Development

The School of Architecture is dedicated to fostering a culture of support, elevation, and professional growth for faculty, staff, and students. Initiatives will be implemented to provide enhanced training, certification, and technology upgrades with additional resources for mentorship opportunities.



# 1

## Key Performance Indicators

### Objective 1.1 Provide funding for certifications, training, workshops, lecture series, and grant-writing efforts.

- Good (Year 1): **30% of students and faculty have participated in certification programs and professional development activities.**
- Better (Year 3): **40% participation**
- Best (Year 5): **50% participation**

### Objective 1.2 Increase resources and usage of technology, digital tools, and materials for course development and delivery.

- Good (Year 1): **50% of planned technology and digital tools have been acquired and are in use for course development and delivery.**
- Better (Year 3): **60% implementation**
- Best (Year 5): **70% implementation**

### Objective 1.3 Develop technology and equipment maintenance schedule and upgrade plan.

- Good (Year 1): **20% of the technology and equipment maintenance schedule and upgrade plan achieved.**
- Better (Year 3): **30% completion**
- Best (Year 5): **45% completion**



# 1

**Objective 1.4 Faculty Workload Optimization: Implement a proportional faculty workload conducive to active research, teaching, and service.**

- Good (Year 1): **30% of faculty report a satisfactory balance in workload conducive to active research, teaching, and service**
- Better (Year 3): **40% satisfaction rate**
- Best (Year 5): **50% satisfaction rate**

**Objective 1.5 Student Engagement in Professional Development and Research: Support student participation in professional competitions, academic research, presentations, and publications.**

- Good (Year 1): **30% of students participate in professional competitions, academic research, presentations, and Publications**
- Better (Year 3): **35% Participation**
- Best (Year 5): **40% Participation**

Key  
Performance  
Indicators



# 1

## Key Performance Indicators

### Objective 1.6 Maintain NAAB and ACCE accreditation and pursue accreditation in PAB (Planning Accreditation Board.) and NASAD (National Association of Schools of Art and Design)

- Good (Year 1): **Maintain existing accreditations and achieve 50% of the progress toward new accreditations (PAB, NASAD)**
- Better (Year 3): **75% of all programs accredited or have applied for accreditation**
- Best (Year 5): **100% of programs are accredited**

### Objective 1.7 Develop and implement workshops to support students' success in preparing for the Architecture Licensing Exam after completing the required experience

- Good (Year 3): **10% of alumni who completed the required experience are registered to take the exam**
- Better (Year 5): **20% are registered**
- Best (Year 5): **10% completed the exam successfully**

### Objective 1.8 Develop and implement building, lab, and studio safety and access plan

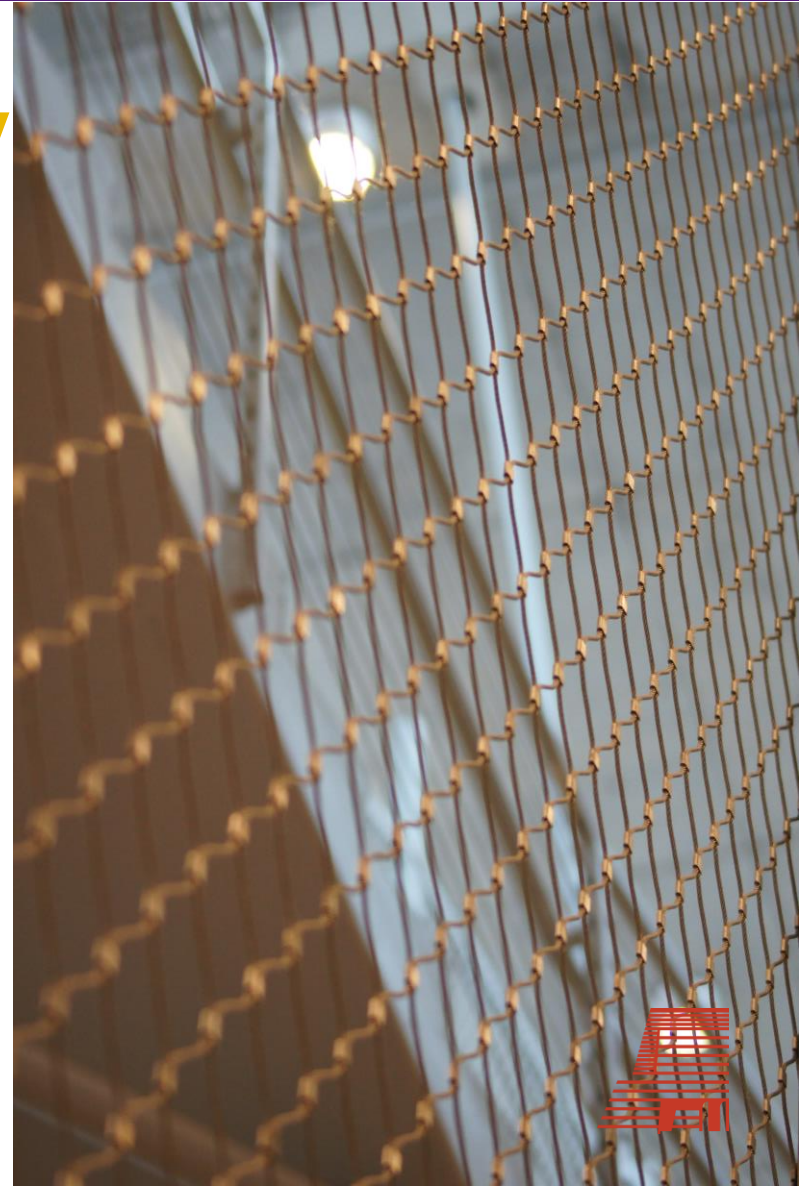
- Good (Year 1): **90% of students report that safety measures and accessibility improvements are adequate**
- Better (Year 3): **95% Satisfaction**
- Best (Year 5): **99% Satisfaction**



## SOA Principles of Community

### **TWO** | Fostering Innovation and Academic Excellence

The School of Architecture is committed to fostering innovation by encouraging cutting-edge architectural design, sustainability, and research-led teaching. Faculty are empowered to lead academic programs that address global and local design discipline challenges, positioning Prairie View A&M University as a hub for creative solutions and forward-thinking designs.



# 2

## Key Performance Indicators

**Objective 2.1 Integrate emerging trends in the SOA fields of study and technological advancements to promote innovation in curriculum and student/faculty competency.**

- Good (Year 3): **30% of courses incorporate the latest trends and technologies.**
- Better (Year 4): **50% of courses incorporate the latest trends and technologies.**
- Best (Year 5): **70% of courses fully integrate emerging trends and advancements.**

**Objective 2.2 Organize workshops and training sessions focused on enhancing teaching practices and upholding SOA Studio Culture.**

- Good (Year 3): **40% of faculty participate in at least one workshop or training session annually.**
- Better (Year 4): **60% of faculty participate in multiple sessions annually.**
- Best (Year 5): **70% of faculty engage in continuous professional development related to teaching practices and studio culture.**

**Objective 2.3 Establish and offer a Microcredential Program in Sustainable Built Environment and Smart Technologies with a focus on Environmental and Sustainable Studies.**

- Good (Year 2): **Expand SOA existing courses in sustainability by integrating smart buildings and AI optimization**
- Better (Year 3): **Leverage the AI-HPB Lab at the SOA and the new ENCARB Engineering Smart Building**
- Best (Year 5): **Increase industry sponsorships, students' internships, certifications, and badges**

# 2

## Key Performance Indicators

**Objective 2.4: Increase cross-disciplinary collaboration and establish industry partnerships to provide in-class, real-world, and professional experiences for students.**

- Good (Year 3): **Establish at least 3 new cross-disciplinary collaborations and 2 new industry partnerships.**
- Better (Year 4): **Expand to 5 cross-disciplinary collaborations and 4 industry partnerships.**
- Best (Year 5): **Achieve 10 active collaborations and partnerships enriching the curriculum.**

**Objective 2.5: Integrate AI and new digital tools into instruction and research/studio project management and completion.**

- Good (Year 3): **20% of projects and courses utilize AI and new digital tools.**
- Better (Year 4): **40% of projects and courses utilize these technologies.**
- Best (Year 5): **60% implementation across all relevant academic and research activities.**

## SOA Principles of Community

### THREE | Promoting Student-Centered Learning and Career Preparedness

Student success remains at the heart of the School of Architecture's mission. The program will provide practical, industry-relevant learning experiences and professional career elaboration opportunities and facilitate hands-on training in state-of-the-art design skills. A focus on Fairness, Representation, and Belonging environments will ensure that all students receive the resources they need to excel in all professional endeavors.



# 3

## Key Performance Indicators

**Objective 3.1 Collaborate with the PVAMU CARES Team to improve and streamline academic advisement and enhance career readiness.**

- Good (Year 2): **25% Reduction in student-reported advisement issues**
- Better (Year 3): **40% Of students express higher satisfaction with academic advisement services**
- Best (Year 3): **50% Of students express higher satisfaction**

**Objective 3.2 Increase publication and acknowledgment of student achievement.**

- Good (Year 2): **20% Increase student achievements recognized**
- Better (Year 3): **30% Increase in student achievements recognized**
- Best (Year 3): **60% Recognized and account for all student achievements**

**Objective 3.3 Enhance the success and visibility of SOA signature summer programs, ARTEC and ACI.**

- Good (Year 2): **15% Develop initiative to increase student enrollment in these programs**
- Better (Year 3): **25% Develop initiative to increase student enrollment in these programs**
- Best (Year 3): **40% Develop initiative to increase external funding and sponsorships**

# 3

## Key Performance Indicators

### **Objective 3.4: Establish a student mentorship program supported and serviced by faculty and industry partners.**

- Good (Year 2): **30% of faculty participation and program launch**
- Better (Year 4): **50% of eligible students participating**
- Best (Year 5): **60% of eligible students participating with full industry integration**

### **Objective 3.5: Implement professional certification and micro-credentialing.**

- Good (Year 3): **Launch two certification or micro-credential program**
- Better (Year 4): **Launch three different certifications/badges in each academic program**
- Best (Year 5): **30% of students obtain a certification or micro-credential**

### **Objective 3.6 Develop and Facilitate Career Preparation Workshops.**

- Good (Year 2): **Conduct two lecture series and one professional development workshop annually**
- Better (Year 3): **Conduct four lecture series and two professional development workshops annually**
- Best (Year 3): **Conduct six lecture series and two professional development workshops annually**

# 3

## Objective 3.7 Promote University Student Health Services and SOA Wellness Activities.

- Good (Year 2): **10% increase in student participation in wellness activities**
- Better (Year 3): **20% increase in student participation in wellness activities**
- Best (Year 3): **30% improvement in student wellness outcomes as measured by health surveys**

Key  
Performance  
Indicators



## SOA Principles of Community

### **FOUR** | Enhancing Research and Creative Scholarship

The School of Architecture will expand its research and creative scholarship by focusing on emerging fields such as sustainable urbanism, climate-responsive design, and technological innovations in construction and digital media. Faculty will be encouraged to seek interdisciplinary research opportunities that contribute to the global design discourse.



# 4

## Objective 4.1 Establish a doctoral program in Community Development Planning.

- Good (Year 1): **Obtained approval of the Community Development Planning Doctoral program framework and curriculum**
- Best (Year 2): **Begin accepting Ph.D. applications and enroll the first cohort of doctoral students**
- Better (Year 3): **Receive accreditation in the Master's of Community Development Planning**

## Objective 4.2 Increase faculty research and student involvement in faculty-led research and the work of the SOA service and research centers

- Good (Year 2): **20% of faculty and students engaged in research projects**
- Better (Year 3): **30% of faculty actively participated with students in research activities**
- Best (Year 4): **50% of students engaged, with substantial contributions to research outputs**

## Objective 4.3 Support student involvement in competitions, research presentations, conference attendance, and workshops.

- Good (Year 3): **10% of students participate in at least one external activity annually**
- Better (Year 4): **20% participation.**
- Best (Year 5): **30% of students participating annually, with notable achievements and recognitions**

Key  
Performance  
Indicators



# Enhance Research and Creative Scholarship



## 4

Key  
Performance  
Indicators

**Objective 4.4 Expand faculty and student research capacity through the development of new courses in digital technology and AI.**

- Good (Year 2): **Development and approval of two new courses**
- Better (Year 3): **Four courses developed, with initial student feedback indicating positive impact**
- Best (Year 5): **Full integration of new courses into the curriculum**

**Objective 4.5 Enhance and increase programmatic offerings and research capacity of SOA centers.**

- Good (Year 2): **Launch at least two new programmatic initiatives within the SOA Centers**
- Better (Year 4): **Demonstrate measurable improvements in research output and collaboration**
- Best (Year 5): **Significant increase in external funding and partnerships, establishing the SOA Centers as leaders in service and research.**

**Objective 4.5 Enhance the interdisciplinary collaboration on research and course teaching with other colleges and universities.**

- Good (Year 2): **10% of faculty and students Collaborate on research or creative scholarships with other colleges and universities**
- Better (Year 3): **15% of faculty actively participate with students in project activities externally**
- Best (Year 4): **20% of faculty engage and partner on research and scholarly work externally**



## SOA Principles of Community

### **FIVE** | Advancing Community Engagement and Regional, National, and International Development

The School of Architecture will prioritize community outreach by offering design services, engaging in regional planning, and providing solutions to Texas's unique architectural and urban challenges and beyond. The school will play a critical role in supporting local communities by leveraging student and faculty expertise.



# 5

## Key Performance Indicators

### Objective 5.1 Establish Alumni Advisory Council that are in their respective professional industry.

- Good (Year 1): **Establish the framework and identify potential council members**
- Better (Year 2): **Officially launch the council with a full roster and conduct an initial meeting**
- Best (Year 3): **Council fully functional with regular contributions to school initiatives and mentorship programs**

### Objective 5.2 Increase faculty, staff, and student participation in national and international programming.

- Good (Year 1): **10% increase in participation in international programs compared to the baseline**
- Better (Year 2): **20% increase in participation**
- Best (Year 3): **30% increase, with collaborative international research projects or exchange programs**

### Objective 5.3 Continue to develop alongside the Cities of Prairie View and Houston through the efforts of the CURES Center, TIPHC, DesignView Media Center, and the Fabrication Center.

- Good (Year 2): **Collaborate on at least two new community development projects**
- Better (Year 4): **Increase involvement to include regular workshops and community engagement events**
- Best (Year 5): **CURES, TIPHC, DesignView, and Fabrication Centers are integral to ongoing development projects with measurable community impact**

# 5

## Key Performance Indicators

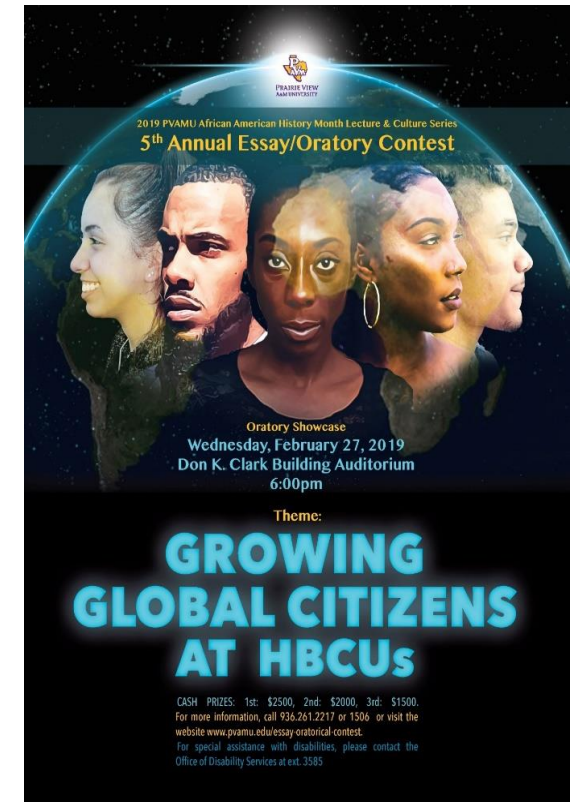
### Objective 5.4 Develop safety and security measures for facilities that support student and faculty needs.

- Good (Year 1): **Complete a comprehensive safety assessment for all relevant facilities.**
- Better (Year 2): **Implement at least 50% of recommended security enhancements.**
- Best (Year 3): **Achieve the full implementation of all security measures, with an 85% satisfaction rate among faculty and students.**

### Objective 5.5 Work with local communities to implement technology-driven solutions that enhance the livability, sustainability, and connectivity of both urban and rural areas across regions.

- Good (Year 2): **Launch at least one collaborative project with local government.**
- Better (Year 4): **Implement two additional technology-driven projects with measurable success in improving local infrastructure.**
- Best (Year 5): **Establish a sustainable partnership model with multiple local governments, delivering ongoing improvements and innovations in urban planning.**

First Name	Last Name	Position Title	Committee Role
Tracey	Moore	Associate Professor – Digital Media Arts & Interim Director	Chair
Bruce	Bockhorn	Associate Professor – Associate Dean and Director of Construction Science	Co-Chair
William	Batson	Professor - Architecture & Director of CURES Center	Co-Chair
Lauren	Kelley	Director of the Texas Institute for the Preservation of History & Culture	
Stephen	Song	Director of the SOA Fabrication Center	
Simie	Abel	Alumnus & Fabrication Center Manager	
Brian	Alexander	Alumnus & Adjunct Faculty - Community Development Graduate Prog.	
Renee'	Smith	Associate Professor of the Practice – Arts Program	
Rania	Labib	Associate Professor - Architecture	
Jeremy	Curtis	Alumnus & Lecturer I - Architecture	
John	Okello	Alumnus & Associate Professor of the Practice - Architecture	
Steven	Wilkerson	Associate Professor of the Practice – Construction Science	
Billie	Evans	Administrative Coordinator II	
Kimberly	Rose	Administrative Coordinator I & Graduate Advisor	
Cleveland	Shepard	Graduate Student	
Issac	Martinez	Undergraduate Student	



# SOA Strategic Plan



**Thank You!**

