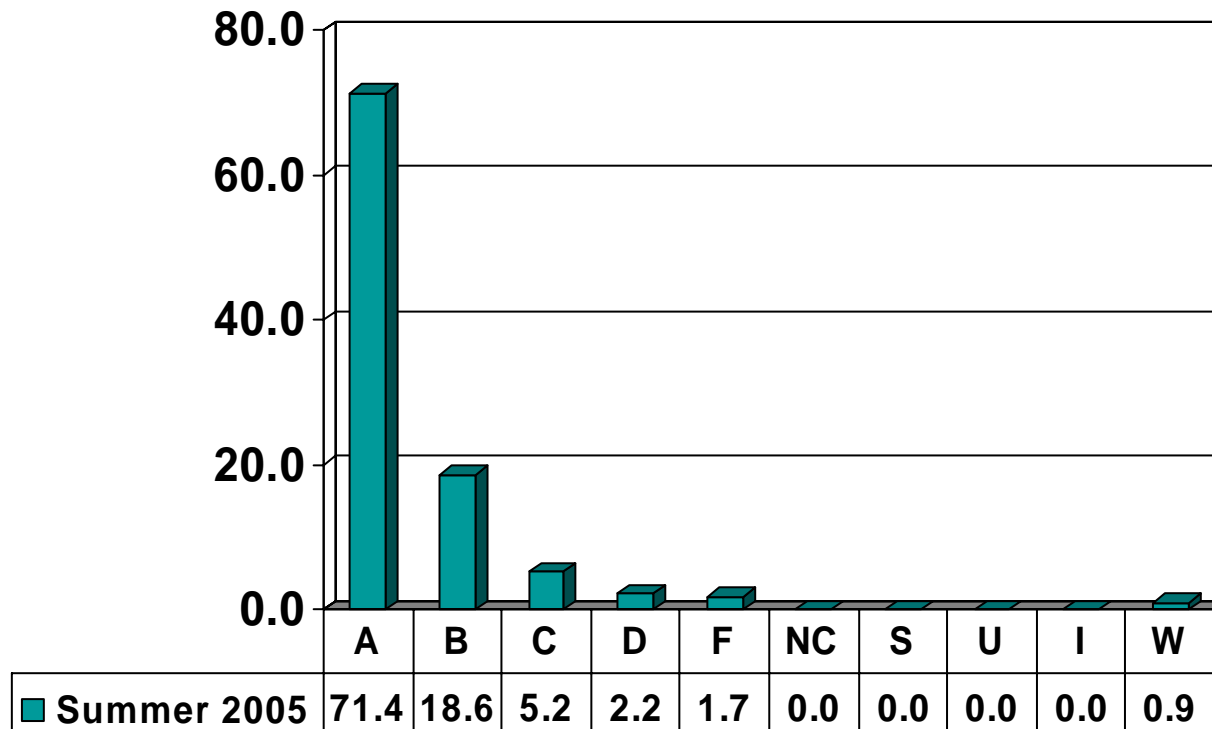


Prairie View A&M University
Grade Distribution Report
Summer 2005

Undergraduate Grade
Distribution by Course

SCHOOL OF ARCHITECTURE

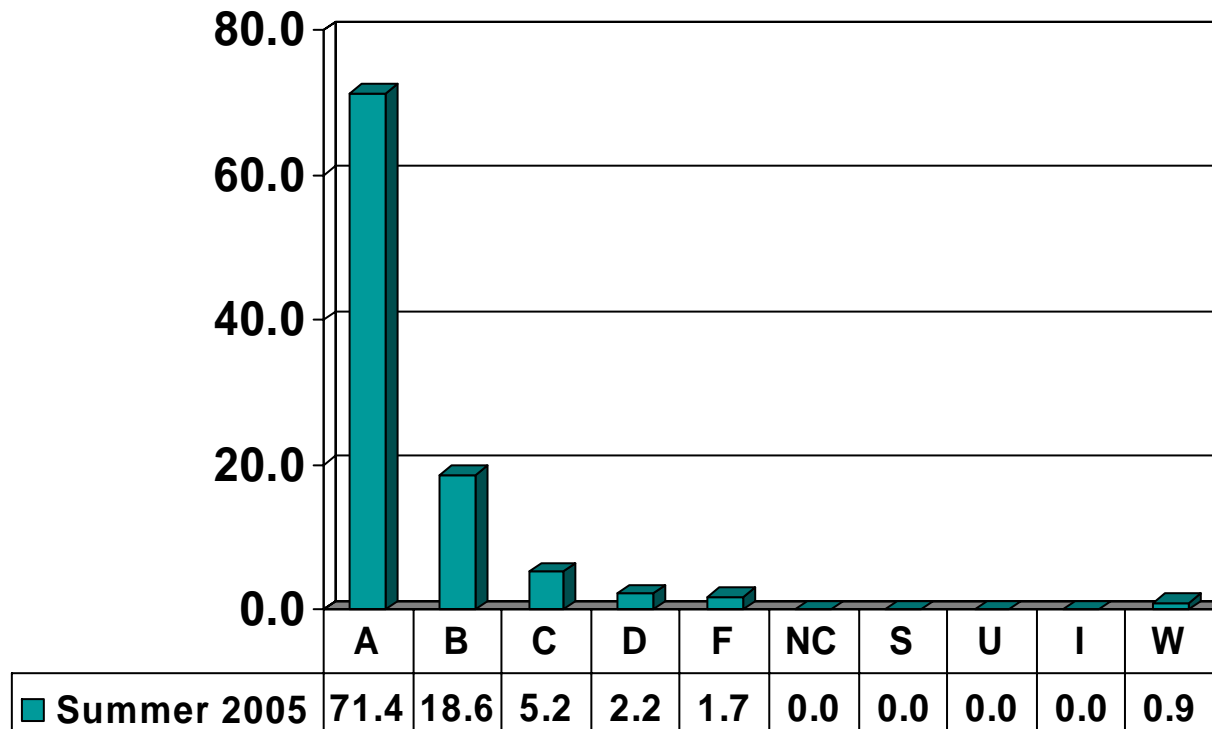
Undergraduate Courses – No. of Grades = 231



Note: Percent columns show rounded figures and may not total 100%.

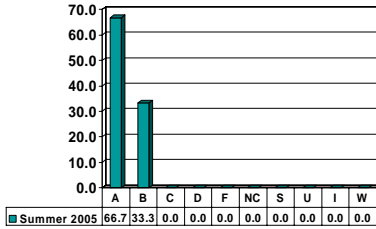
ARCHITECTURE

Undergraduate Courses – No. of Grades = 231



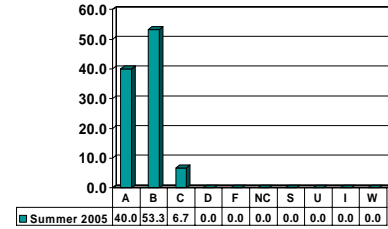
ARCHITECTURE 1233

Freshman UG – No. of Grades = 15



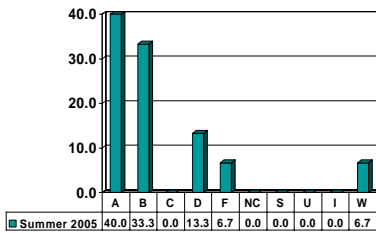
ARCHITECTURE 1253

Freshman UG – No. of Grades = 15



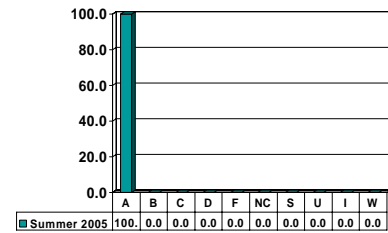
ARCHITECTURE 1266

Freshman UG – No. of Grades = 15



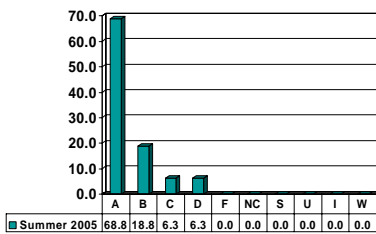
ARCHITECTURE 4406

Senior UG – No. of Grades = 2



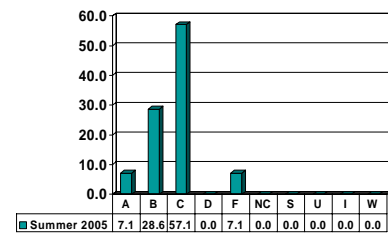
ARCHITECTURE 4483

Senior UG – No. of Grades = 16



ARCHITECTURE 4986

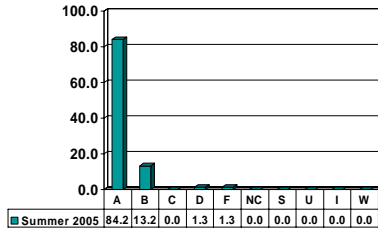
Senior UG – No. of Grades = 14



Note: Percent columns show rounded figures and may not total 100%.

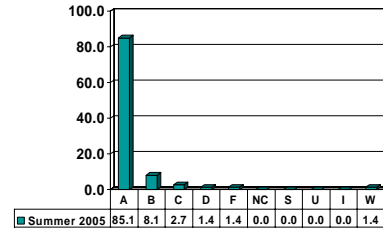
ARTS 1203

Freshman UG – No. of Grades = 76



ARTS 2283

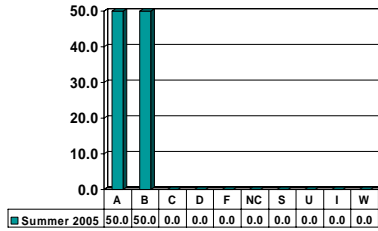
Sophomore UG – No. of Grades = 74



Note: Percent columns show rounded figures and may not total 100%.

CONS 4403

Senior UG – No. of Grades = 4



Note: Percent columns show rounded figures and may not total 100%.