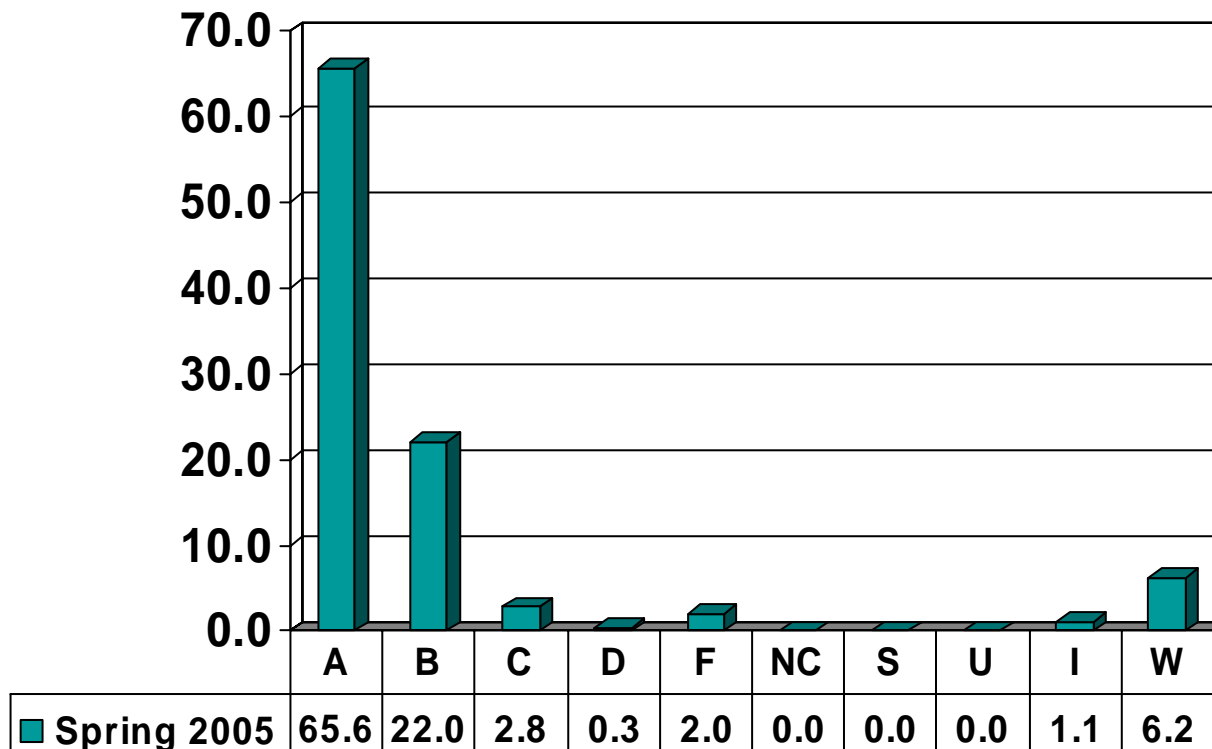


Prairie View A&M University
Grade Distribution Report
Spring 2005

Graduate Grade
Distribution by Course

EDUCATION

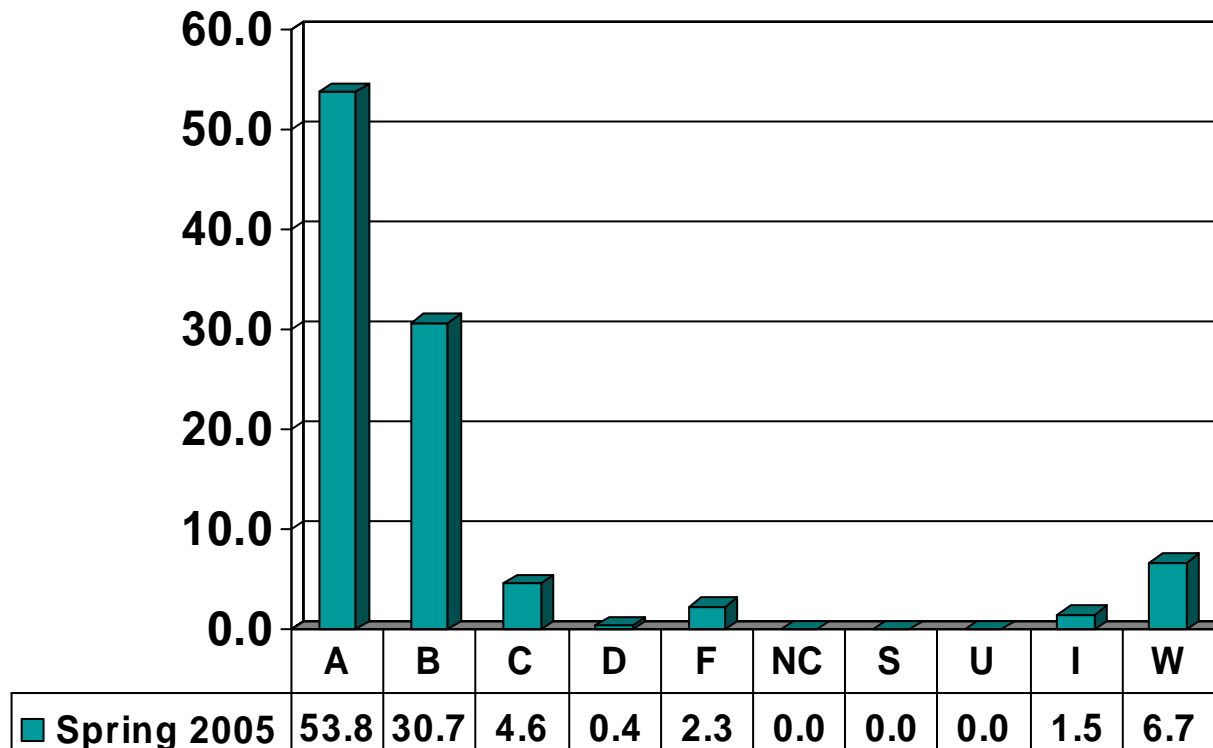
Graduate Courses – No. of Grades = 3801



Note: Percent columns show rounded figures and may not total 100%.

CURRICULUM & INSTRUCTION

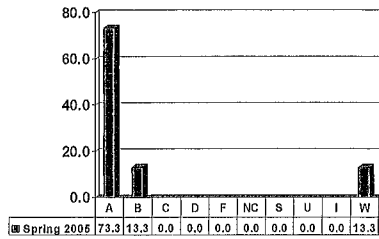
Graduate Courses – No. of Grades = 522



Note: Percent columns show rounded figures and may not total 100%.

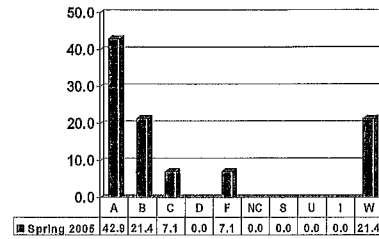
CURRICULUM & INSTRUCTION IN INSTRUCTIONAL TECHNOLOGY 5723

Graduates – No. of Grades = 15



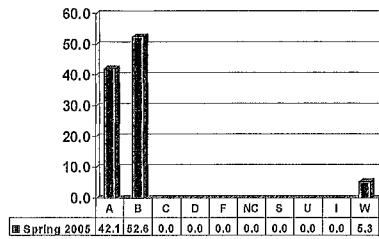
CURRICULUM & INSTRUCTION IN INSTRUCTIONAL TECHNOLOGY 5753

Graduates – No. of Grades = 14



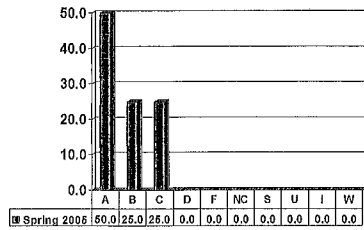
CURRICULUM & INSTRUCTION IN INSTRUCTIONAL TECHNOLOGY 5763

Graduates – No. of Grades = 19



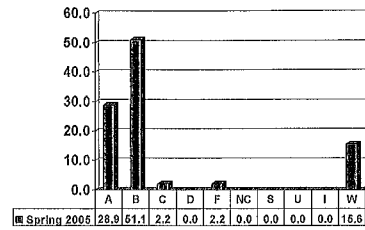
CURRICULUM 4993

Graduates – No. of Grades = 8



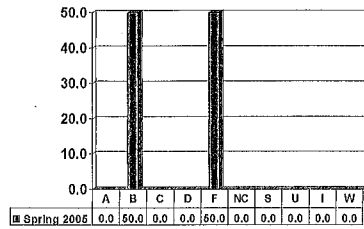
CURRICULUM 5003

Graduates – No. of Grades = 45



CURRICULUM 5993

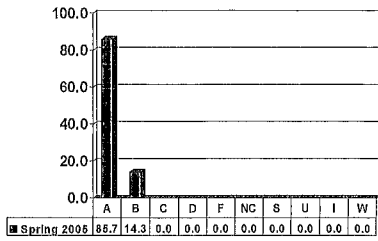
Graduates – No. of Grades = 2



Note: Percent columns show rounded figures and may not total 100%.

CURRICULUM & INSTRUCTION 5013

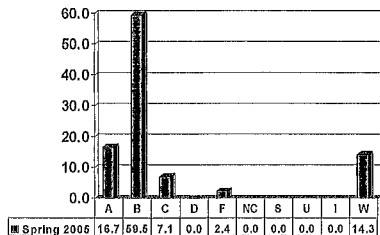
No. of Grades = 49



Note: Percent columns show rounded figures and may not total 100%.

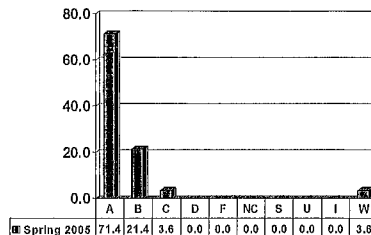
EDUCATION FOUNDATIONS 5103

Graduates – No. of Grades = 42



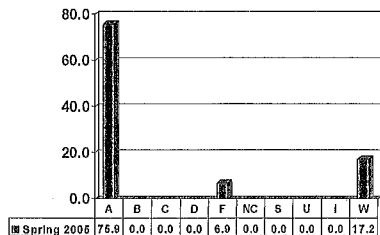
EDUCATION FOUNDATIONS 5113

Graduates – No. of Grades = 28



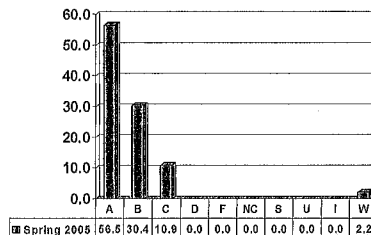
EDUCATION FOUNDATIONS 5123

Graduates – No. of Grades = 29



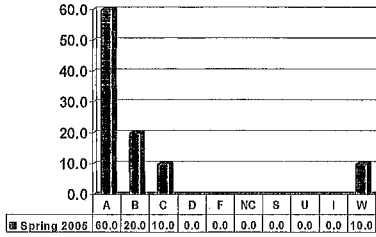
EDUCATION FOUNDATIONS 5923

Graduates – No. of Grades = 46



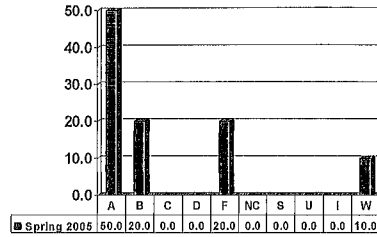
EDUCATION TECHNOLOGY 5403

Graduates – No. of Grades = 10



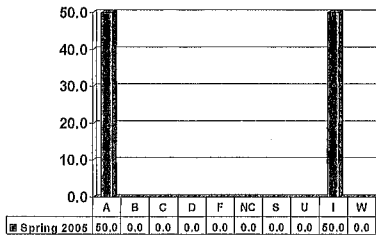
EDUCATION TECHNOLOGY 5423

Graduates – No. of Grades = 10



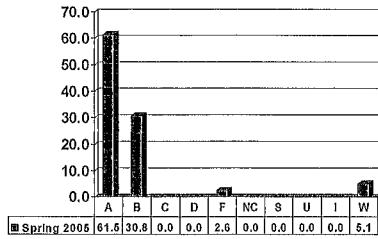
EDUCATION TECHNOLOGY 5473

Graduates – No. of Grades = 2



READING 5663

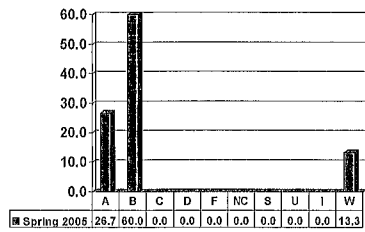
Graduates – No. of Grades = 39



Note: Percent columns show rounded figures and may not total 100%.

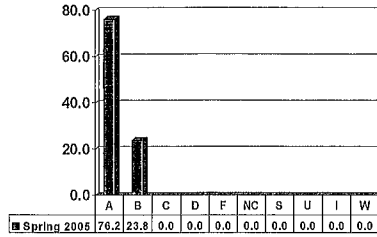
SECONDARY EDUCATION 5513

Graduates – No. of Grades = 15



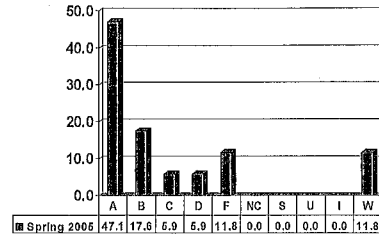
SPECIAL EDUCATION 5203

Graduates – No. of Grades = 42



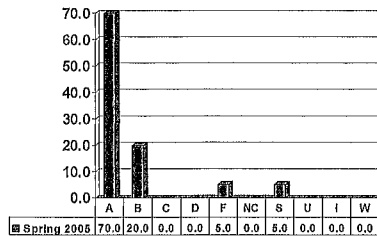
SPECIAL EDUCATION 5213

Graduates – No. of Grades = 17



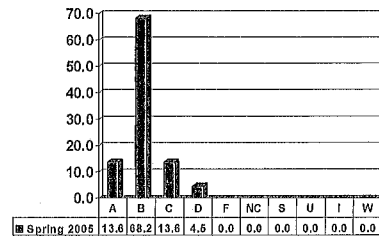
SPECIAL EDUCATION 5243

Graduates – No. of Grades = 20



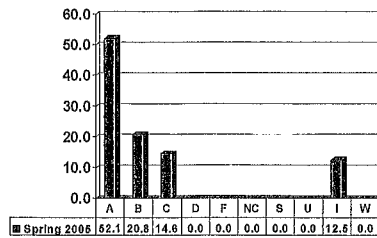
SPECIAL EDUCATION 5263

Graduates – No. of Grades = 22



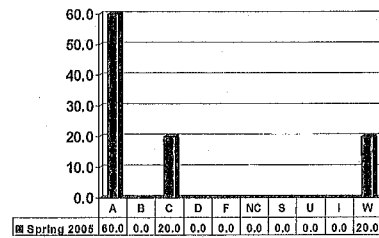
SPECIAL EDUCATION 5283

Graduates – No. of Grades = 48



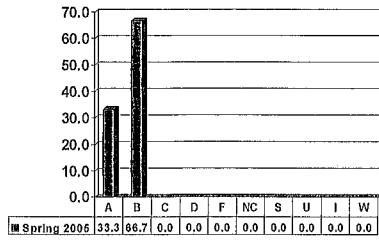
SPECIAL EDUCATION 5343

Graduates – No. of Grades = 5



VOCATIONAL EDUCATION 5603

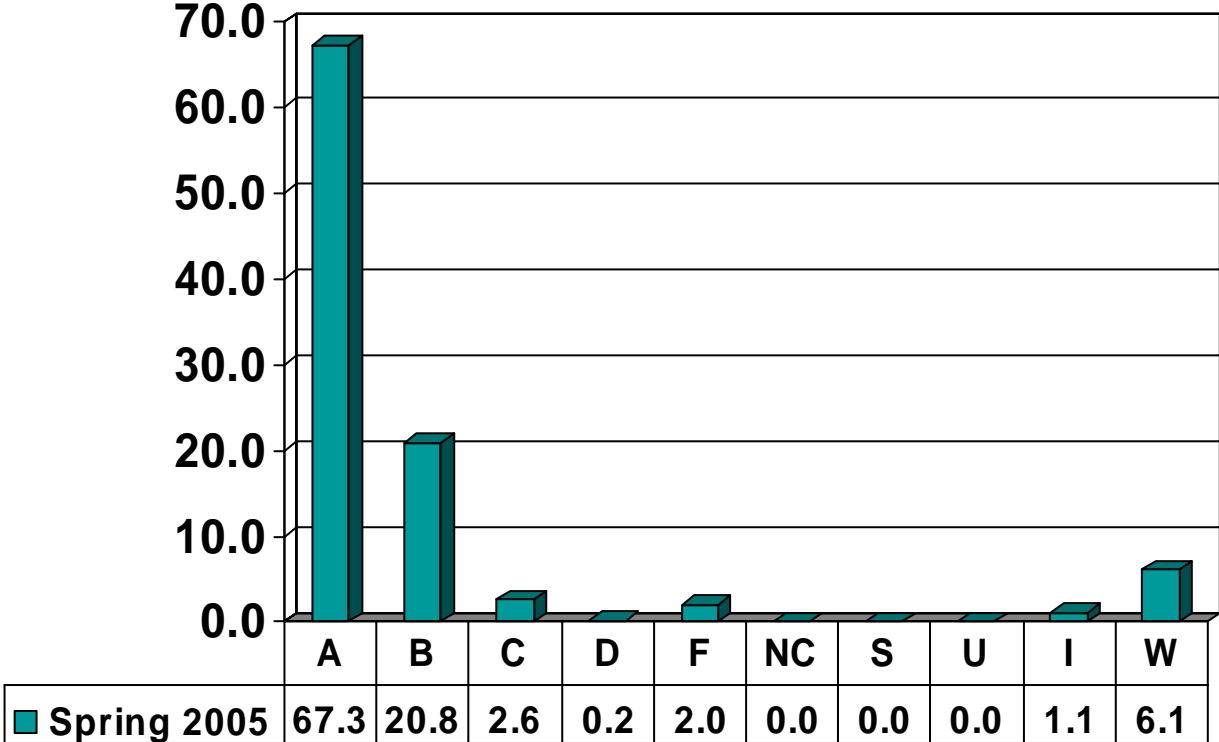
Graduates – No. of Grades = 3



Note: Percent columns show rounded figures and may not total 100%.

EDUCATIONAL LEADERSHIP & COUNSELING

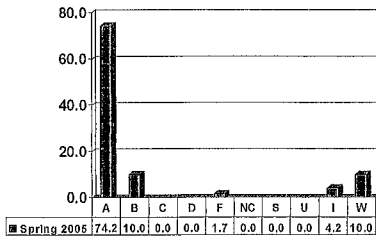
Graduate Courses – No. of Grades = 3219



Note: Percent columns show rounded figures and may not total 100%.

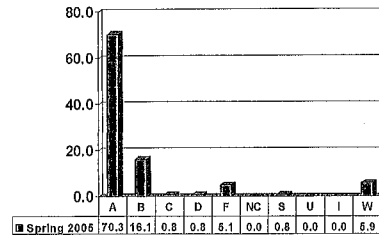
ADMINISTRATION 5003

Graduates – No. of Grades = 120



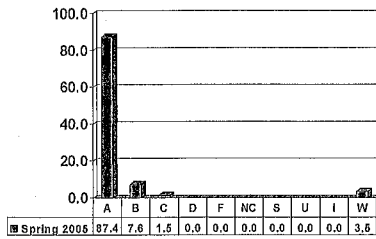
ADMINISTRATION 5023

Graduates – No. of Grades = 118



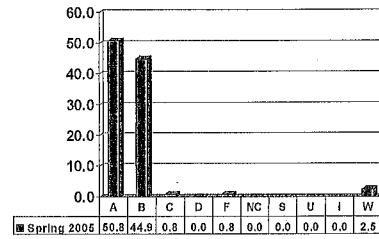
ADMINISTRATION 5033

Graduates – No. of Grades = 198



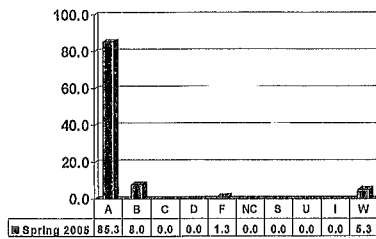
ADMINISTRATION 5043

Graduates – No. of Grades = 118



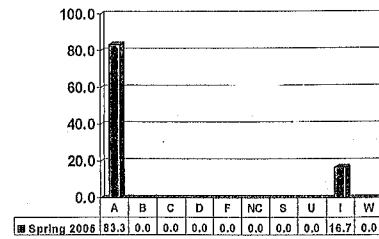
ADMINISTRATION 5073

Graduates – No. of Grades = 75



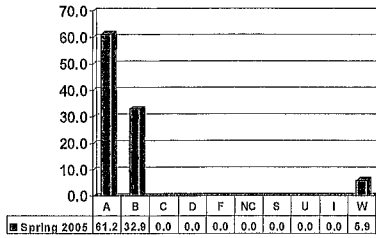
ADMINISTRATION 5083

Graduates – No. of Grades = 18



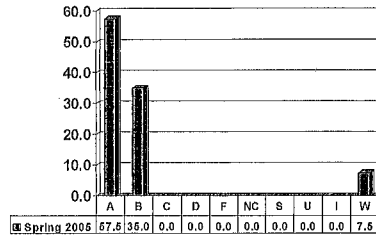
ADMINISTRATION 5093

Graduates – No. of Grades = 85



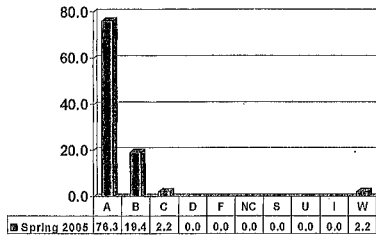
ADMINISTRATION 5133

Graduates – No. of Grades = 80



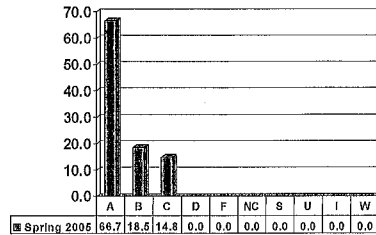
ADMINISTRATION 5163

Graduates – No. of Grades = 93



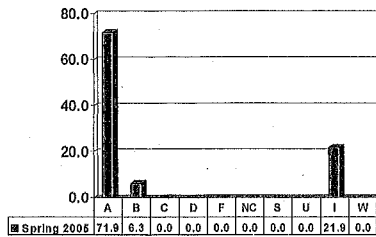
ADMINISTRATION 5173

Graduates – No. of Grades = 27



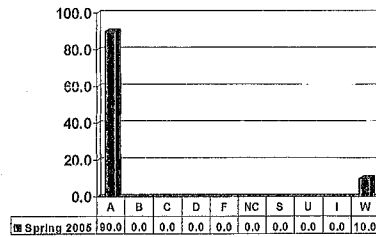
ADMINISTRATION 5503

Graduates – No. of Grades = 32



ADMINISTRATION 5533

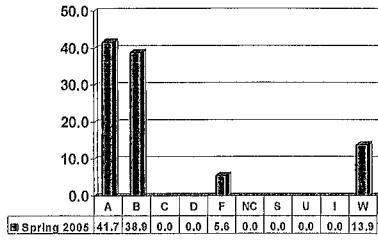
Graduates – No. of Grades = 10



Note: Percent columns show rounded figures and may not total 100%.

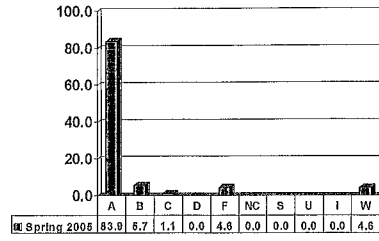
COUNSELING 5003

Graduates – No. of Grades = 36



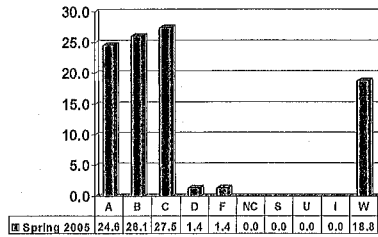
COUNSELING 5013

Graduates – No. of Grades = 87



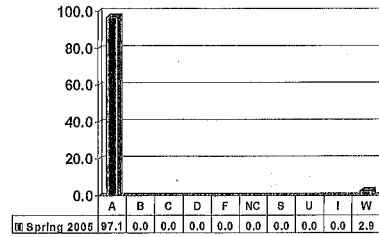
COUNSELING 5023

Graduates – No. of Grades = 69



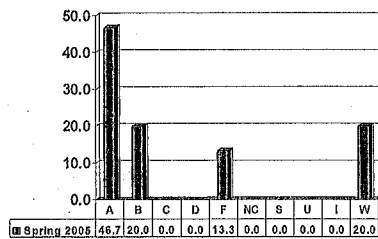
COUNSELING 5033

Graduates – No. of Grades = 34



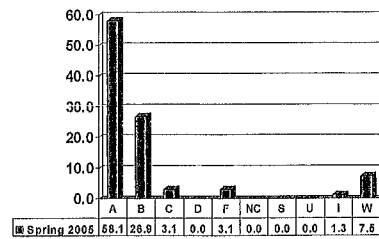
COUNSELING 5043

Graduates – No. of Grades = 30



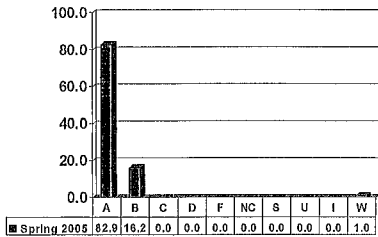
COUNSELING 5053

Graduates – No. of Grades = 160



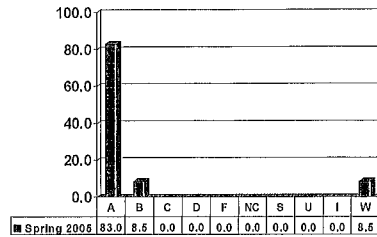
COUNSELING 5063

Graduates – No. of Grades = 105



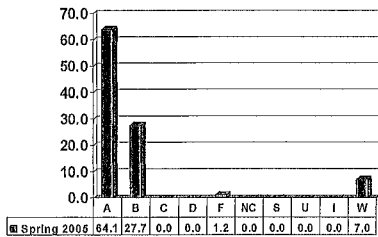
COUNSELING 5073

Graduates – No. of Grades = 47



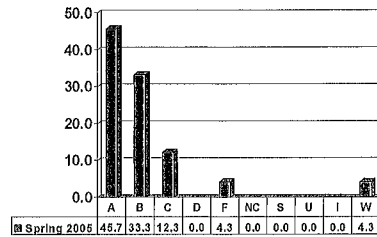
COUNSELING 5083

Graduates – No. of Grades = 256



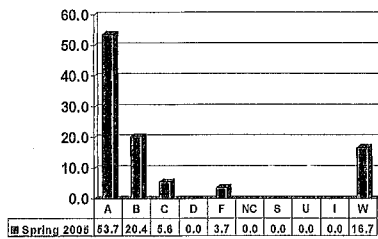
COUNSELING 5093

Graduates – No. of Grades = 162



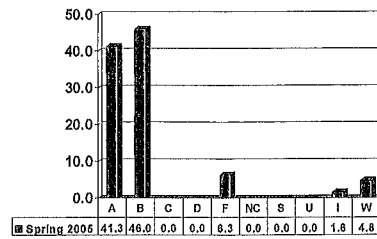
COUNSELING 5113

Graduates – No. of Grades = 54



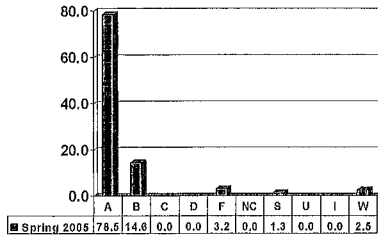
COUNSELING 5123

Graduates – No. of Grades = 63



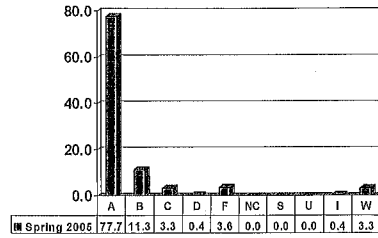
COUNSELING 5133

Graduates – No. of Grades = 158



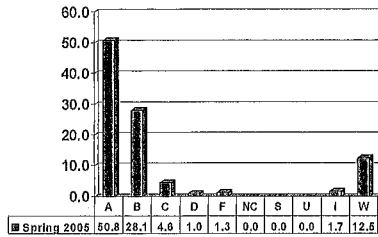
COUNSELING 5143

Graduates – No. of Grades = 274



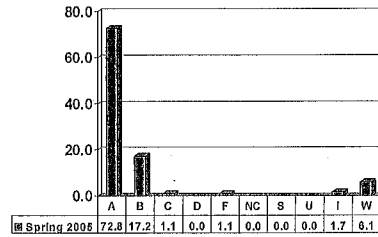
COUNSELING 5153

Graduates – No. of Grades = 303



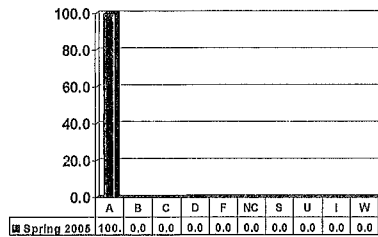
COUNSELING 5163

Graduates – No. of Grades = 180



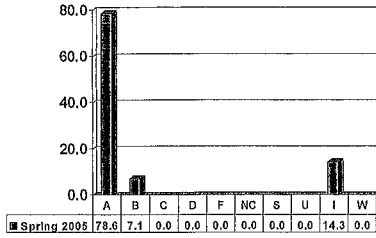
COUNSELING 5993

Graduates – No. of Grades = 1



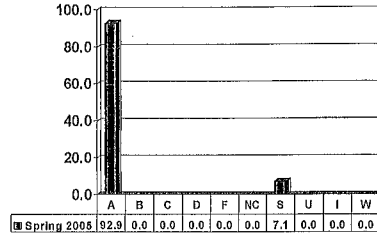
EDUCATIONAL LEADERSHIP 7033

Graduates – No. of Grades = 14



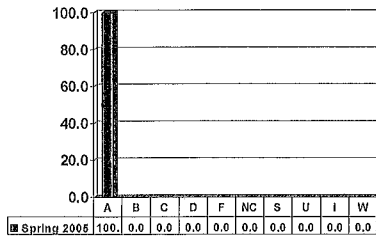
EDUCATIONAL LEADERSHIP 7063

Graduates – No. of Grades = 14



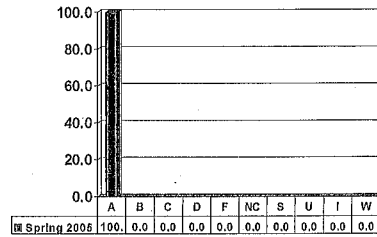
EDUCATIONAL LEADERSHIP 7243

Graduates – No. of Grades = 6



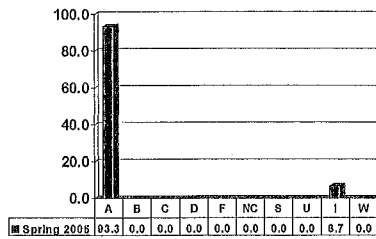
EDUCATIONAL LEADERSHIP 7303

Graduates – No. of Grades = 5



EDUCATIONAL LEADERSHIP 7603

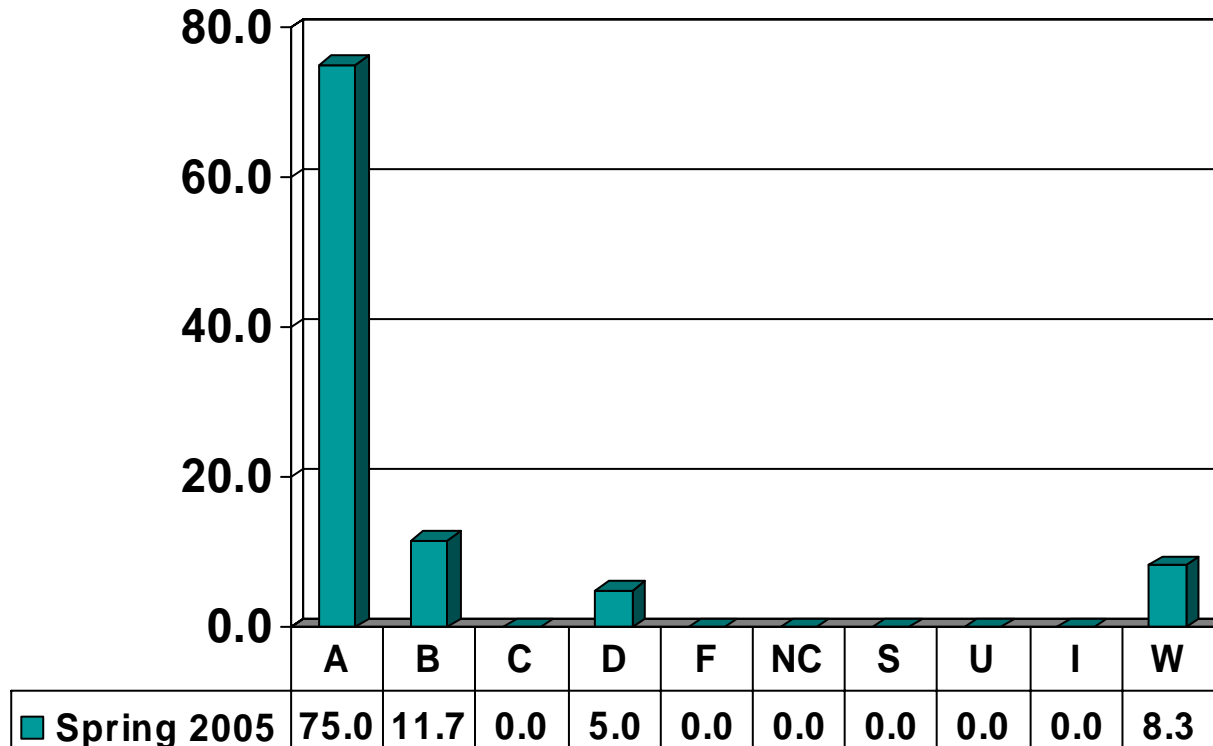
Graduates – No. of Grades = 15



Note: Percent columns show rounded figures and may not total 100%.

HEALTH & HUMAN PERFORMANCE

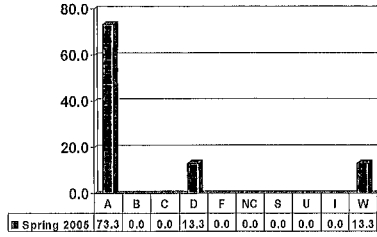
Graduate Courses – No. of Grades = 60



Note: Percent columns show rounded figures and may not total 100%.

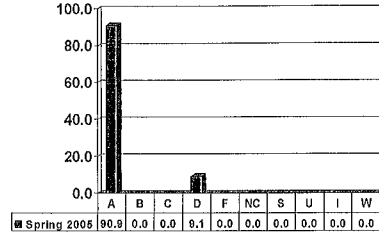
HEALTH 5043

Graduates – No. of Grades = 15



HEALTH 5193

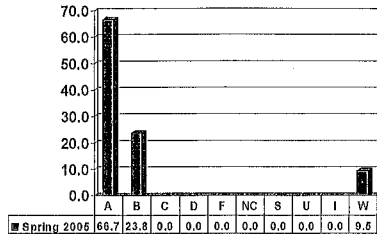
Graduates – No. of Grades = 11



Note: Percent columns show rounded figures and may not total 100%.

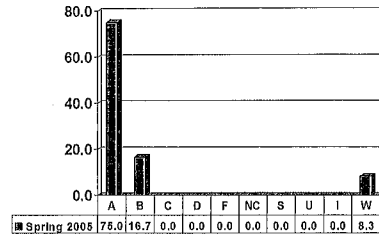
PHYSICAL EDUCATION 5113

Graduates – No. of Grades = 21



PHYSICAL EDUCATION 5123

Graduates – No. of Grades = 12



PHYSICAL EDUCATION 5993

Graduates – No. of Grades = 1

