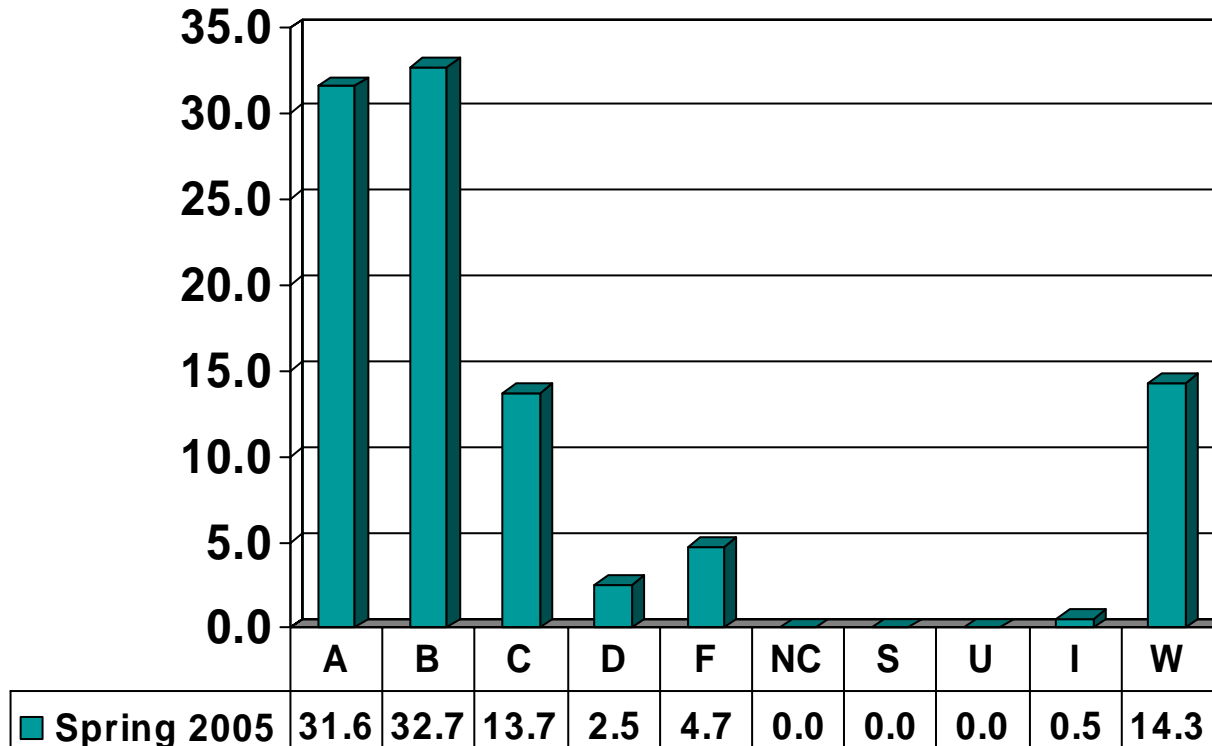


Prairie View A&M University  
Grade Distribution Report  
Spring 2005

Graduate Grade  
Distribution by Course

# BUSINESS

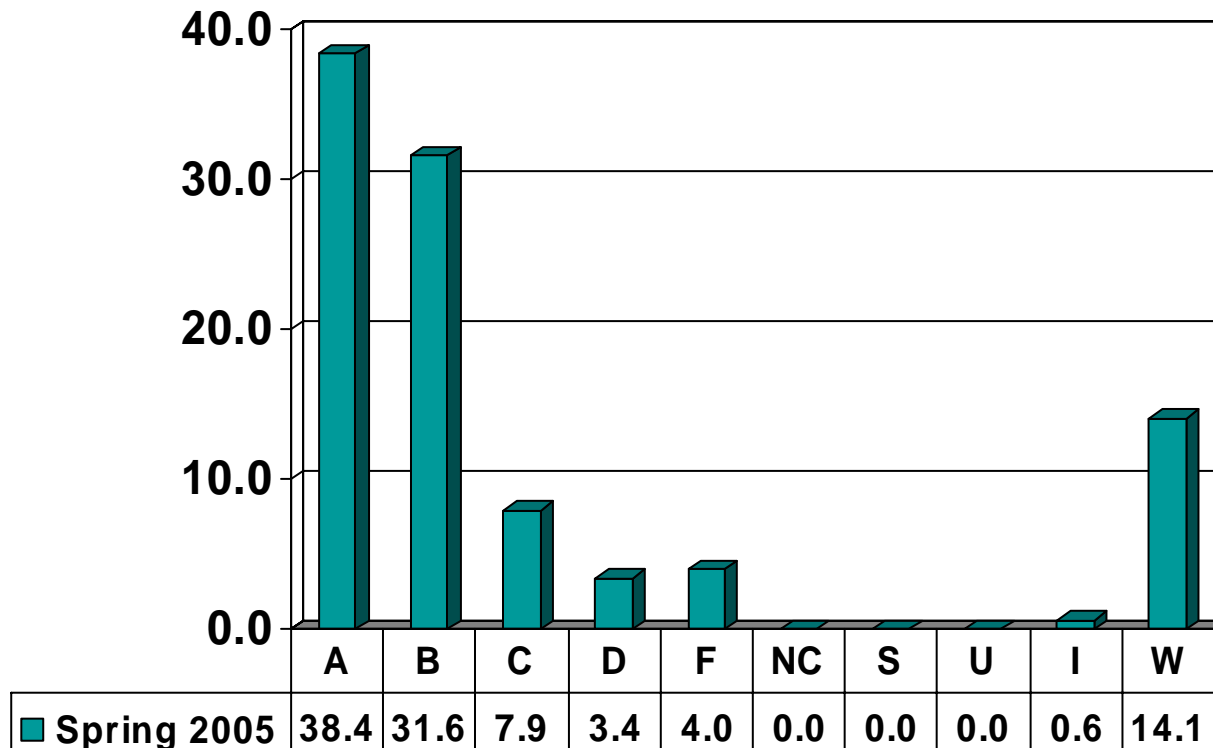
Graduate Courses – No. of Grades = 364



Note: Percent columns show rounded figures and may not total 100%.

# Accounting, Finance & Management Information Systems

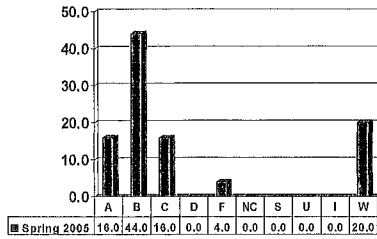
Graduate Courses – No. of Grades = 177



Note: Percent columns show rounded figures and may not total 100%.

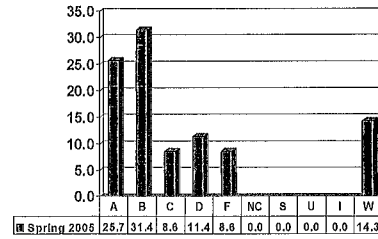
### ACCOUNTING 5003

Graduates – No. of Grades = 25



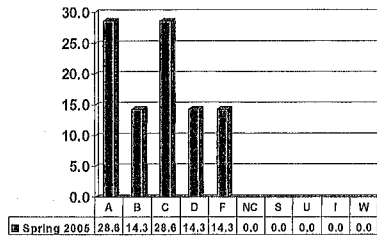
### ACCOUNTING 5103

Graduates – No. of Grades = 35



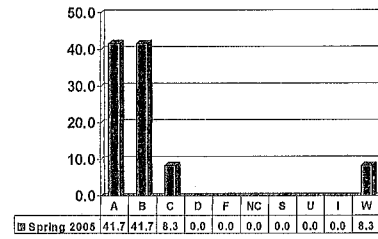
### ACCOUNTING 5133

Graduates – No. of Grades = 7



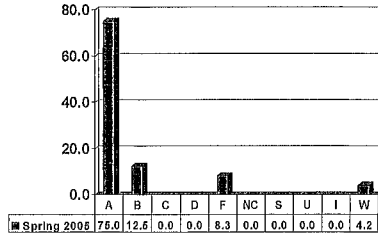
### ACCOUNTING 5153

Graduates – No. of Grades = 12



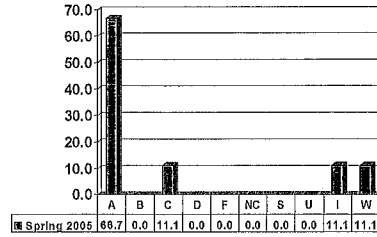
### FINANCE 5003

Graduates -- No. of Grades = 24



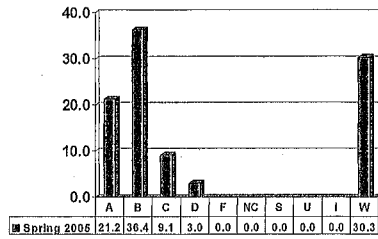
### FINANCE 5013

Graduates -- No. of Grades = 9



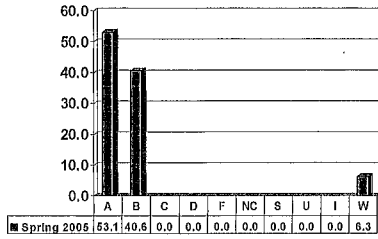
### FINANCE 5313

Graduates -- No. of Grades = 33



## MANAGEMENT INFORMATION SYSTEMS 5513

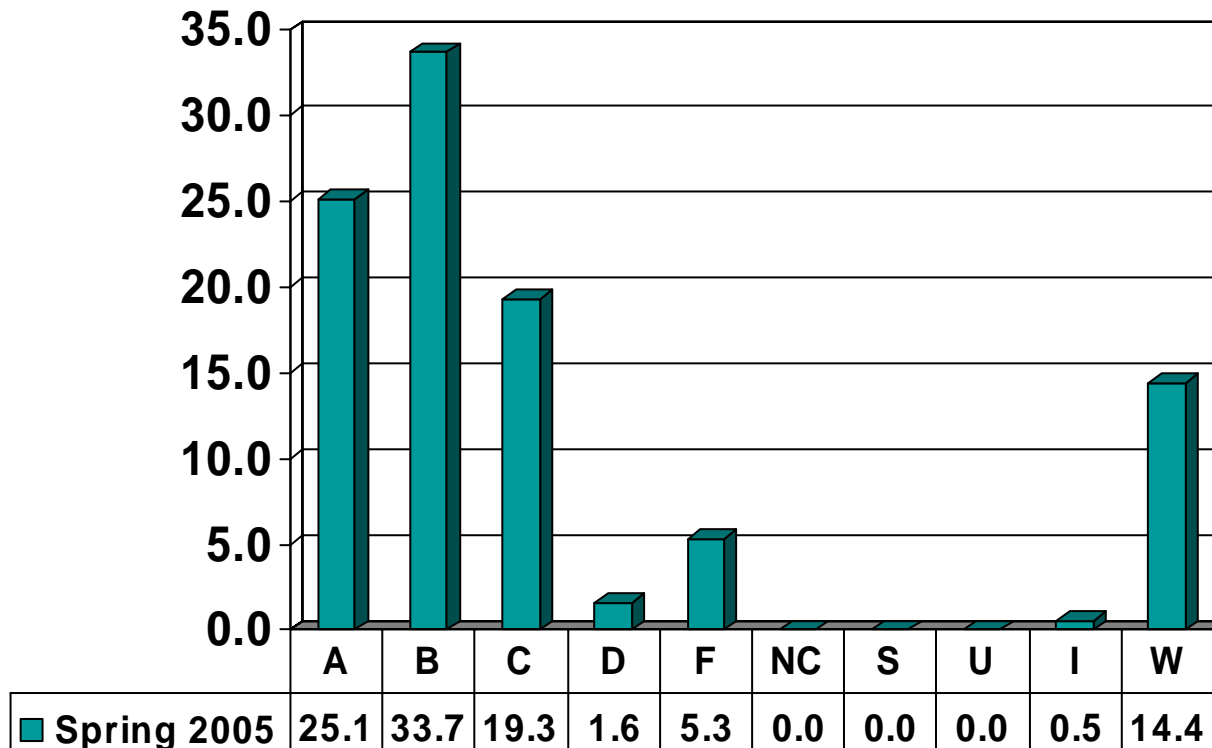
Graduates – No. of Grades = 32



Note: Percent columns show rounded figures and may not total 100%.

# Management & Marketing

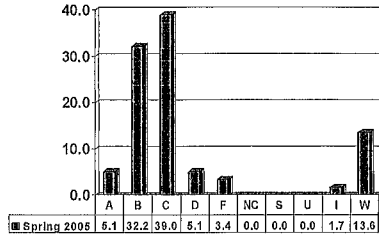
Graduate Courses – No. of Grades = 187



Note: Percent columns show rounded figures and may not total 100%.

# ECONOMICS 5103

Graduates – No. of Grades = 59

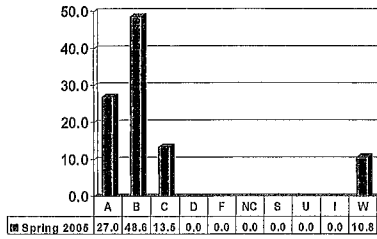


Note: Percent columns show rounded figures and may not total 100%.



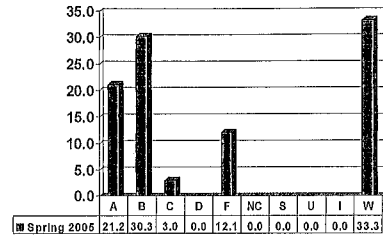
### MANAGEMENT 5103

Graduates – No. of Grades = 37



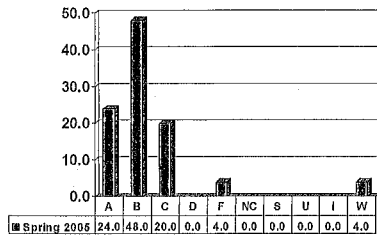
### MANAGEMENT 5113

Graduates – No. of Grades = 33



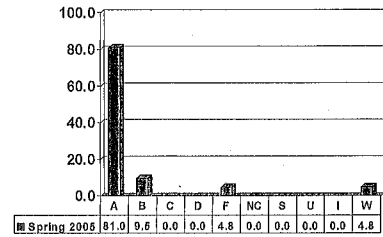
### MANAGEMENT 5433

Graduates – No. of Grades = 25



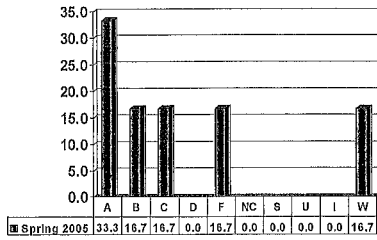
### MANAGEMENT 5613

Graduates – No. of Grades = 21



# MARKETING 5003

Graduates – No. of Grades = 12



Note: Percent columns show rounded figures and may not total 100%.