

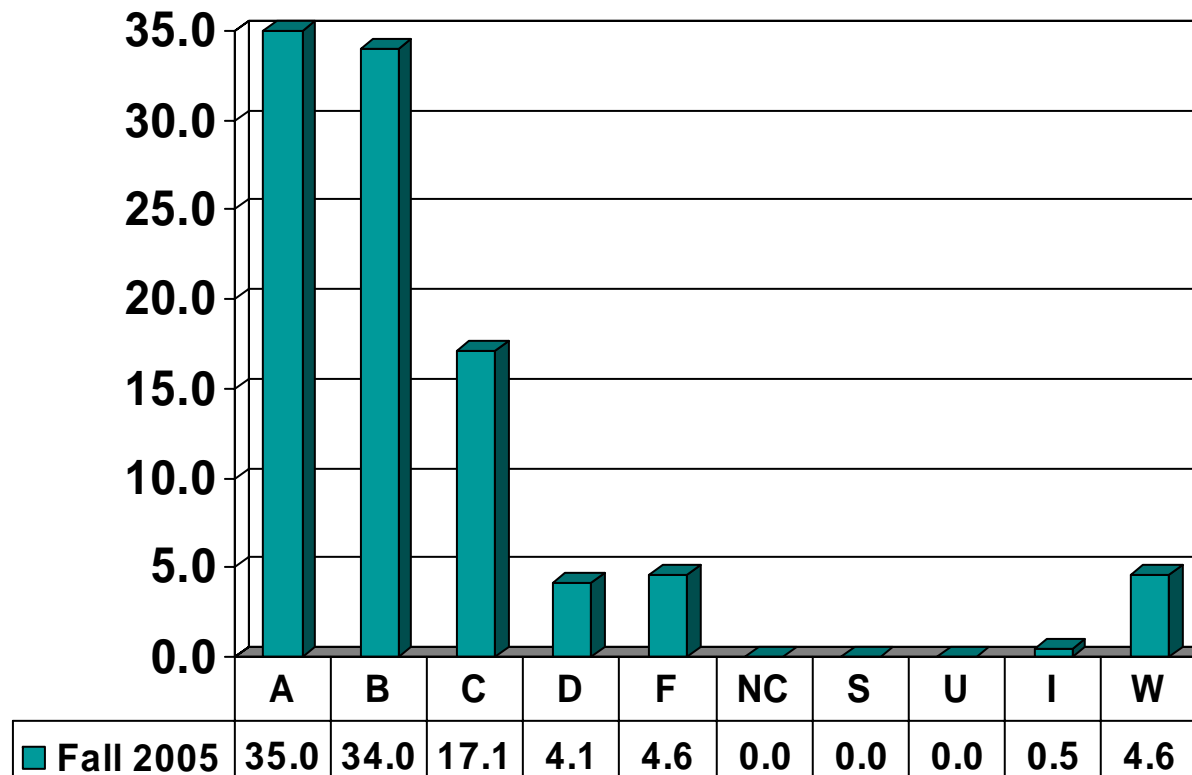
Prairie View A&M University
Grade Distribution Report
Fall 2004* & FALL 2005
COMPARISONS

Undergraduate Grade
Distribution by Course

*When available

AGRICULTURE & HUMAN SCIENCES

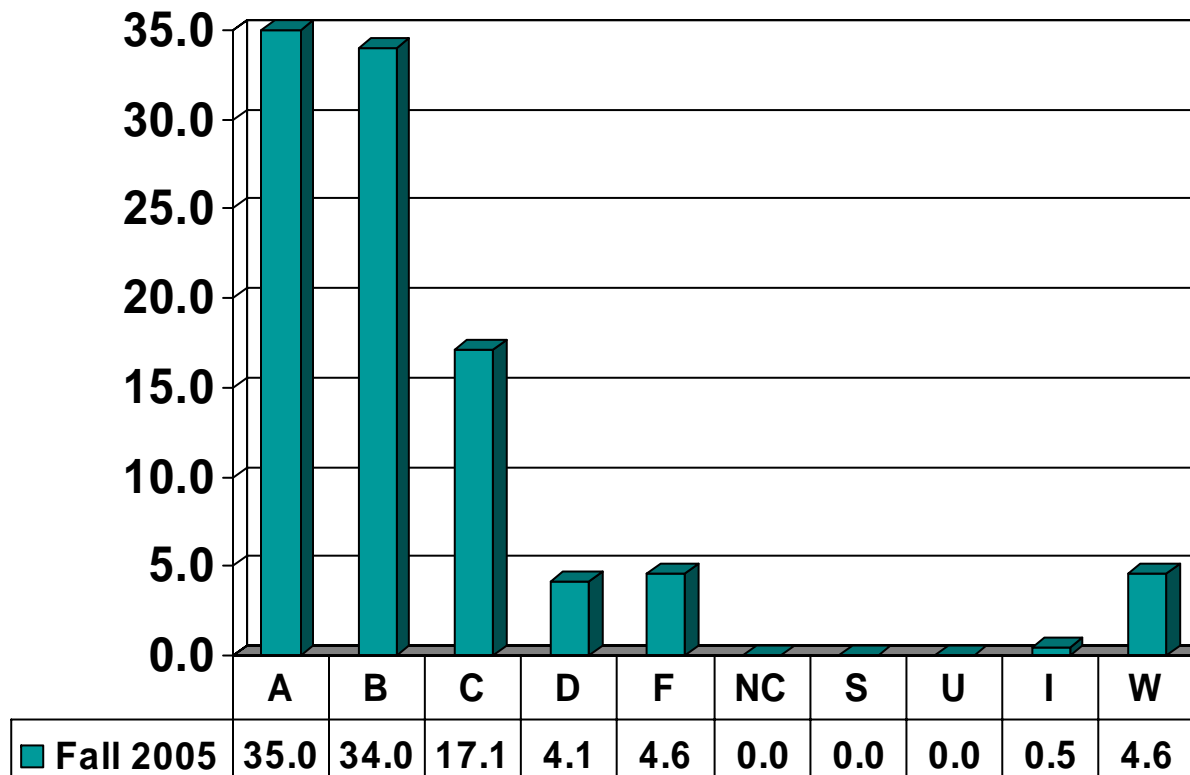
Undergraduate Courses – No. of Grades = 917



Percent columns show rounded figures and may not total 100%.

AGRICULTURE, NUTRITION & HUMAN ECOLOGY

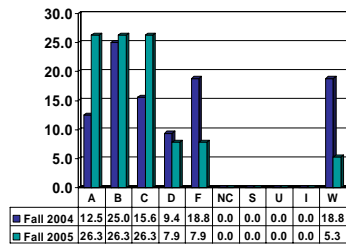
Undergraduate Courses – No. of Grades = 917



Note: Percent columns show rounded figures and may not total 100%.

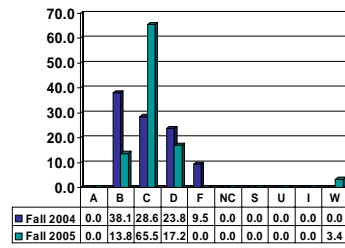
AGRICULTURAL ECONOMICS 1233

Freshman UG – No. of Grades = 38



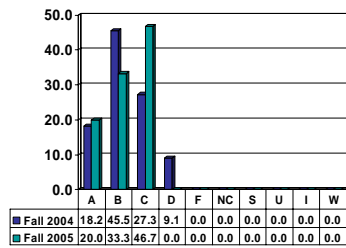
AGRICULTURAL ECONOMICS 2213

Sophomore UG – No. of Grades = 29



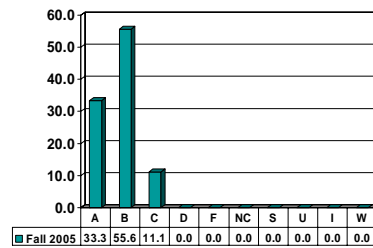
AGRICULTURAL ECONOMICS 3253

Junior UG – No. of Grades = 15



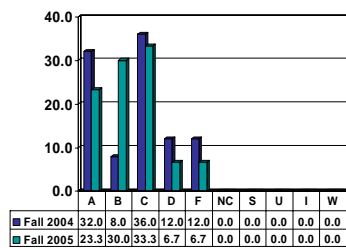
AGRICULTURAL ECONOMICS 4223

Senior UG – No. of Grades = 9



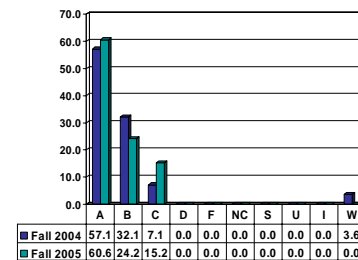
AGRICULTURAL ENGINEERING 1413

Freshman UG – No. of Grades = 30



AGRICULTURAL & HUMAN RESOURCES 1313

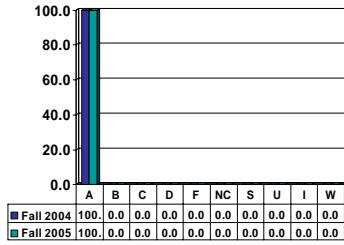
Freshman UG – No. of Grades = 33



Note: Percent columns show rounded figures and may not total 100%.

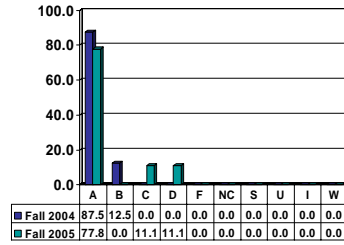
AGRICULTURAL & HUMAN RESOURCES 3996

Junior UG – No. of Grades = 18



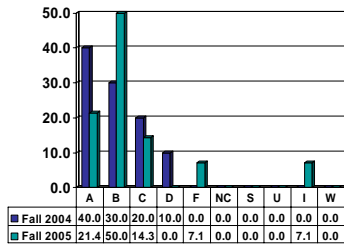
AGRICULTURAL & HUMAN RESOURCES 4993

Senior UG – No. of Grades = 9



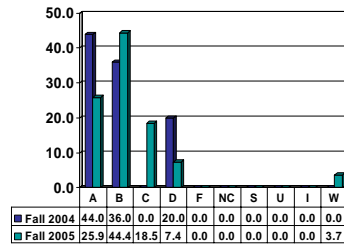
AGRONOMY 2613

Sophomore UG – No. of Grades = 14



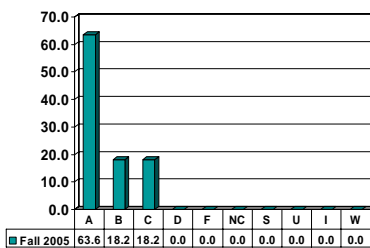
AGRONOMY 3713

Junior UG – No. of Grades = 27



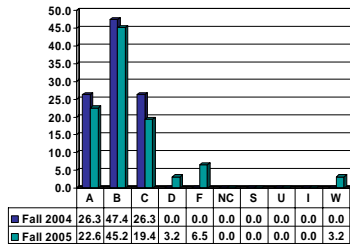
AGRONOMY 3723

Junior UG – No. of Grades = 11



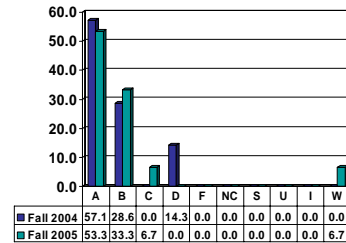
ANIMAL SCIENCE 1513

Freshman UG – No. of Grades = 31



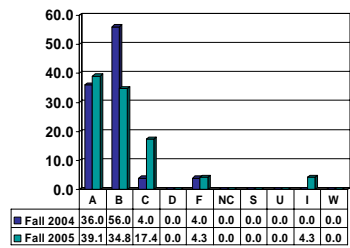
ANIMAL SCIENCE 2513

Sophomore UG – No. of Grades = 15



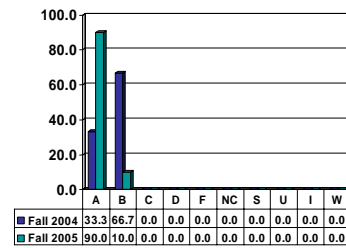
ANIMAL SCIENCE 2523

Sophomore UG – No. of Grades = 23



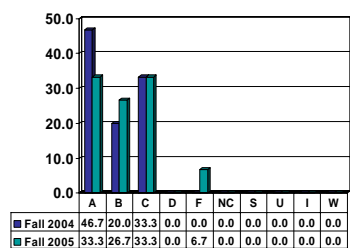
ANIMAL SCIENCE 2533

Sophomore UG – No. of Grades = 10



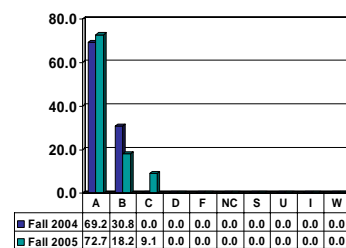
ANIMAL SCIENCE 2543

Sophomore UG – No. of Grades = 15



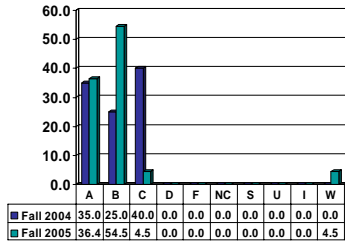
ANIMAL SCIENCE 3523

Junior UG – No of Grades = 11



ANIMAL SCIENCE 4533

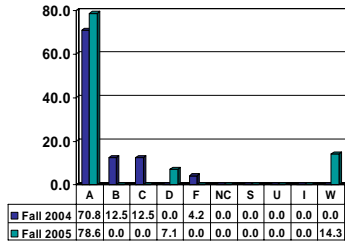
Senior UG – No. of Grades = 22



Note: Percent columns show rounded figures and may not total 100%.

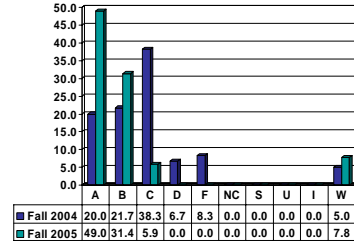
DESIGN 1123

Freshman UG – No. of Grades = 14



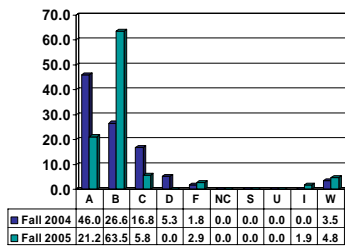
HUMAN DEVELOPMENT & FAMILY 2513

Sophomore UG – No. of Grades = 51



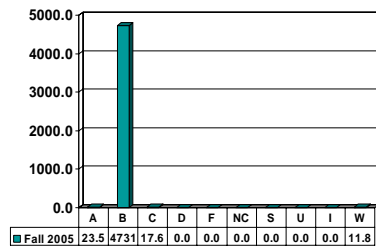
HUMAN DEVELOPMENT & FAMILY 2533

Sophomore UG – No. of Grades = 104



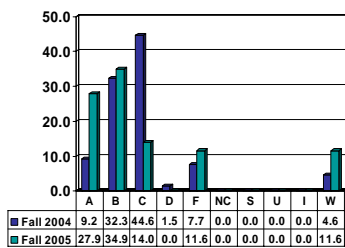
HUMAN DEVELOPMENT & FAMILY 2543

Sophomore UG – No. of Grades = 17



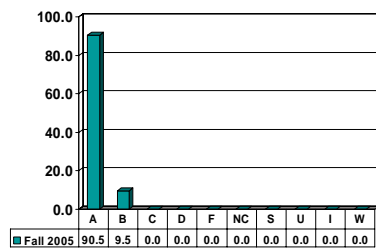
HUMAN DEVELOPMENT & FAMILY 2553

Sophomore UG – No. of Grades = 43



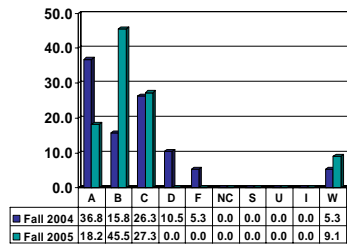
HUMAN DEVELOPMENT & FAMILY 3503

Sophomore UG – No. of Grades = 21



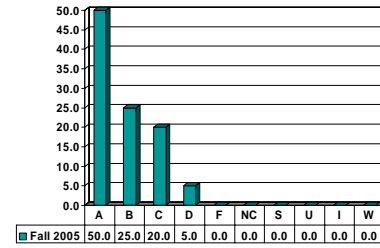
FOOD SCIENCE 3583

Junior UG – No. of Grades = 11



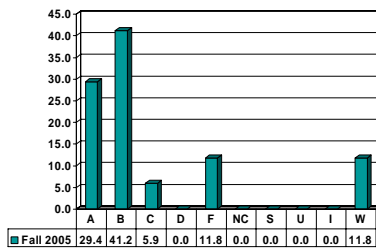
HUMAN NUTRITION & FOOD 2633

Junior UG – No. of Grades = 20



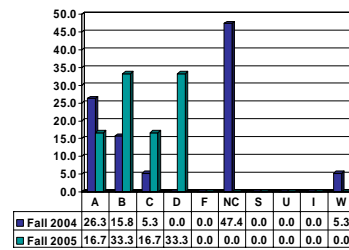
HUMAN NUTRITION & FOOD 2653

Junior UG – No. of Grades = 17



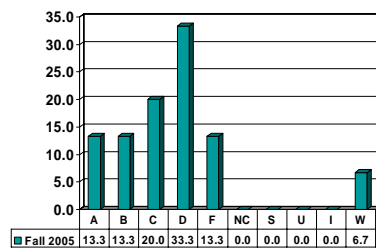
HUMAN NUTRITION & FOOD 3623

Junior UG – No. of Grades = 6



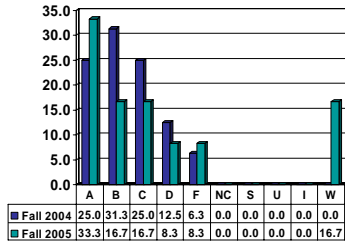
HUMAN NUTRITION & FOOD 3653

Junior UG – No. of Grades = 15



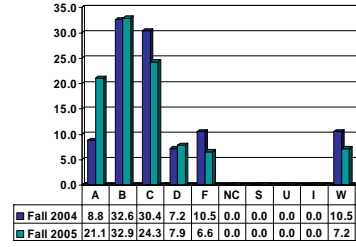
HUMAN SCIENCES 1333

Freshman UG – No. of Grades = 12



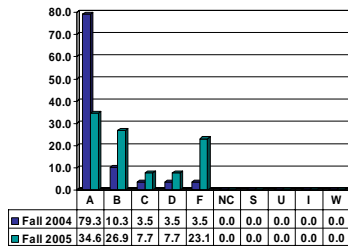
HUMAN SCIENCES 1343

Freshman UG – No. of Grades = 152



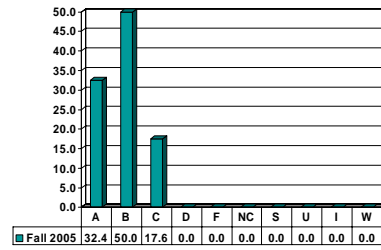
HUMAN SCIENCES 2373

Sophomore UG – No. of Grades = 26



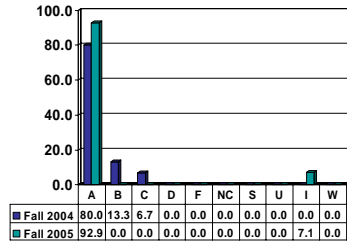
HUMAN SCIENCES 3313

Junior UG – No. of Grades = 34



MERCHANDISE 4763

Senior UG – No. of Grades = 14



Note: Percent columns show rounded figures and may not total 100%.