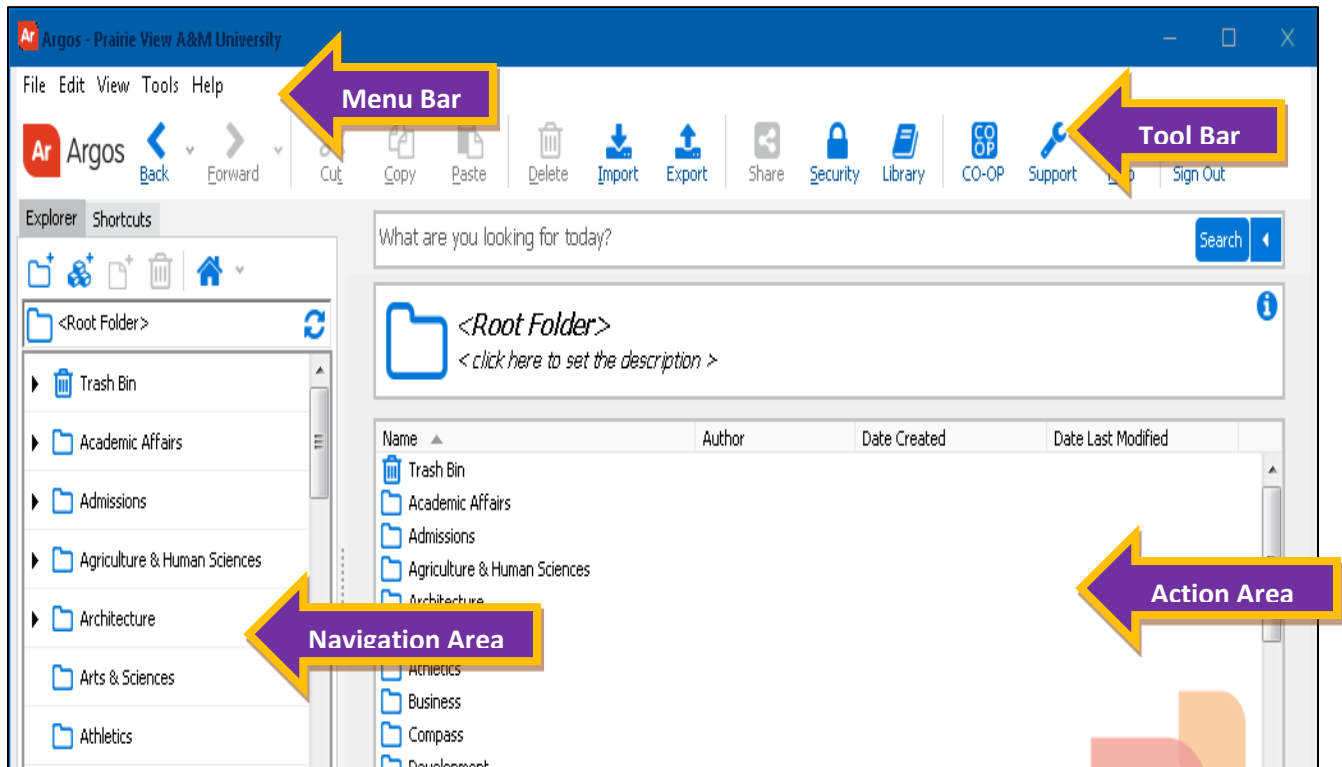


# Prairie View A&M University - Argos Main Menu

## Main Menu

The Main Menu provides an overview of the menus, folders, DataBlocks, reports and options available in Argos. You use the Main Menu to navigate throughout Argos.



<b>Menu Bar</b>	The Menu Bar allows you to take simple actions such as logging in, finding items, customizing toolbars and changing your password.
<b>Tool Bar</b>	Set of icons that represent shortcuts for performing common functions from the main menu.
<b>Action Area</b>	The right hand side of the screen will have buttons for any actions you can take on a selected object. The buttons that are visible will depend on the type of object you select in the Navigation Area.
<b>Navigation Area</b>	This area contains the objects that you can perform actions on. There are two different views, Explorer and Shortcuts. Explorer: A simple menu of available objects and folders. Shortcuts: Shortcuts to reports.
<b>Status Bar</b>	Tells what server you're logged into, your username and user type.