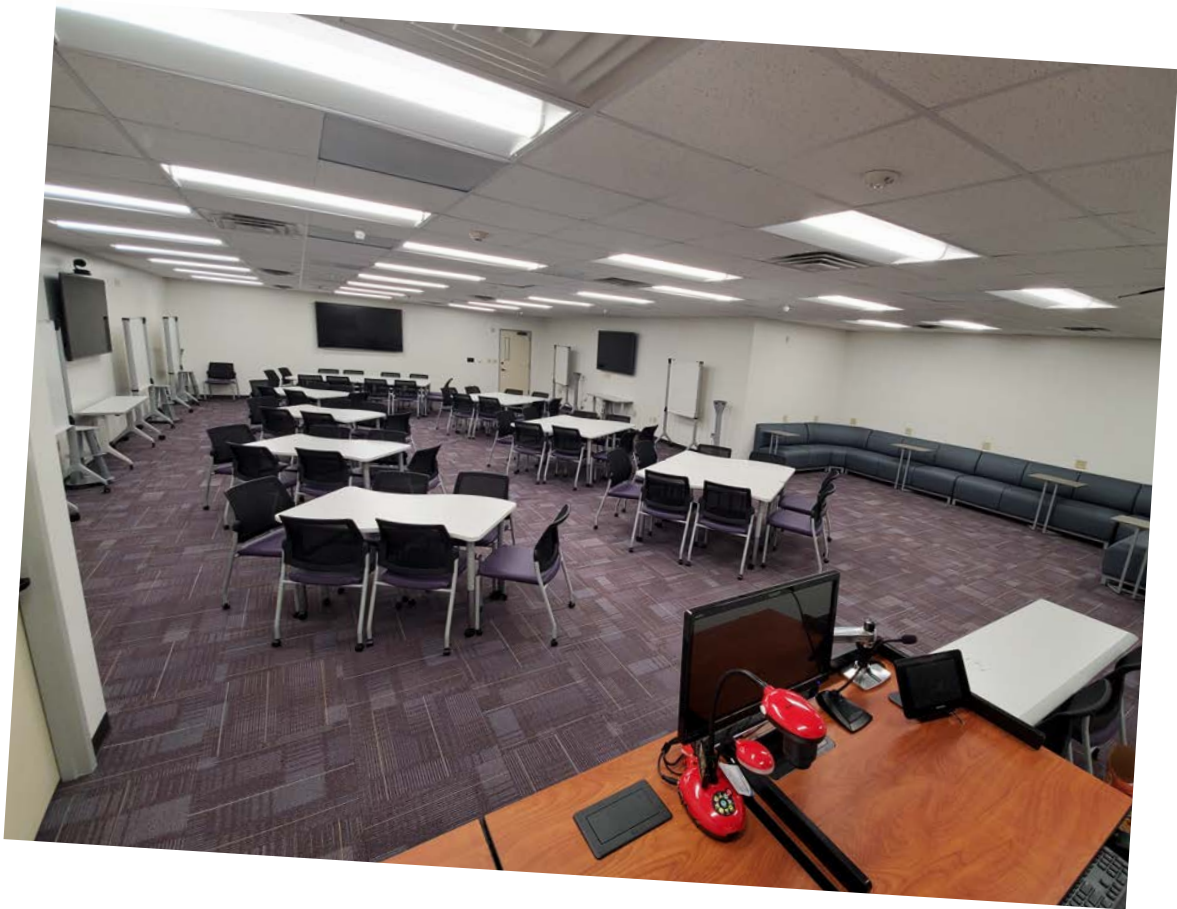




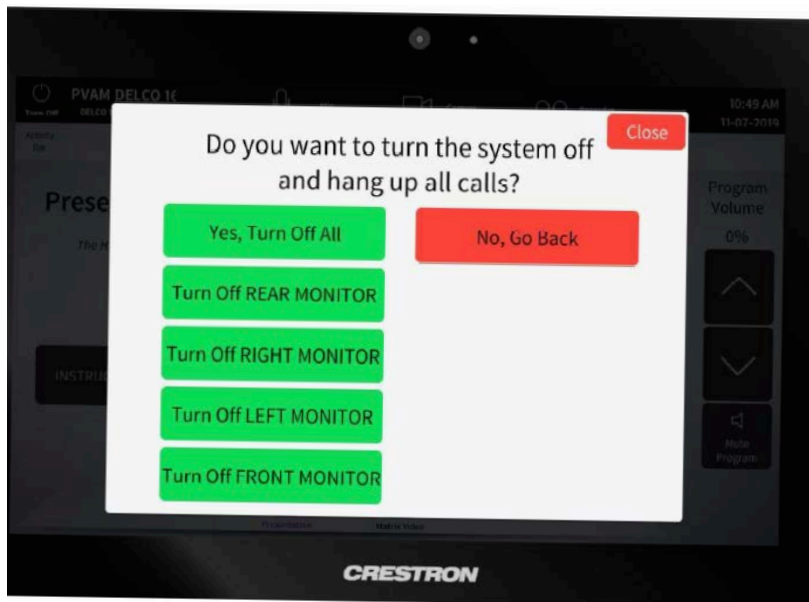
Delco 169

Clinical Observation Lab



A/V System Startup and Shutdown

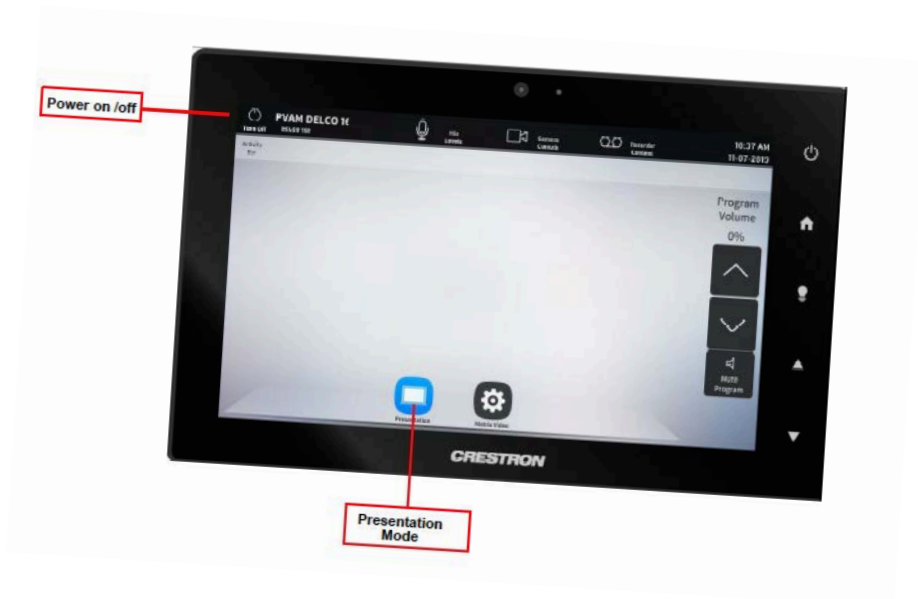
To turn the system on either press the power icon located at the top left of the screen, press the power icon located at the top right of the touchpad, or press anywhere on the control pad.



To turn the system off, either Press the power icon located at the top left of the screen, and confirm the shutdown option, or press the power icon located at the top right of the touchpad, and confirm the shutdown option.

Content Presentation

The A/V system allows for all sources that are available at the podium to be displayed to all monitors in the room. In this section we will illustrate how to display the **same content** on **all displays simultaneously** and **different content** on selected monitors simultaneously.



To chose which source to display the same content on ALL monitors, **Turn system "On" and press the "Presentation Mode" icon.**

"Instructor Cam" will display a real-time view of the room.

Standing at the podium, the Instructor Cam is located above the left monitor.



Content Presentation



“Student Cam” will display a real-time view of the room.

The Student Cam is located behind the instructor podium

“DMPS” is where you will find all connections available at the podium. The sources to be displayed include the following:

- Doc Camera
- Laptop HDMI
- PC
- USB - C



Content Presentation



"Doc Cam" will display documents from the camera of the document camera located at the podium.

"Laptop HDMI" will display any laptop connected at the podium with the HDMI cable located in the cubby.



Content Presentation



"PC" will display a real-time view of the PC housed in the podium.

"USB-C" will display a real-time view of any device with a USB-C port connected to the USB-C cable at the podium.



Content Presentation



"WIPS" will display content from the wireless presentation system. The WIPS System allows for mobile devices to connect to it and present wirelessly from their devices.

Content Matrix

To display multiple sources to multiple displays you use the **"Matrix Video Mode"**. For example, if you want to display "USB-C" on one monitor and "Student Cam" on two other monitors with the podium PC on the fourth monitor, Matrix Video Mode makes it possible!



To start matrix video mode, Press **"Matrix Video Mode"** on the touchpad.

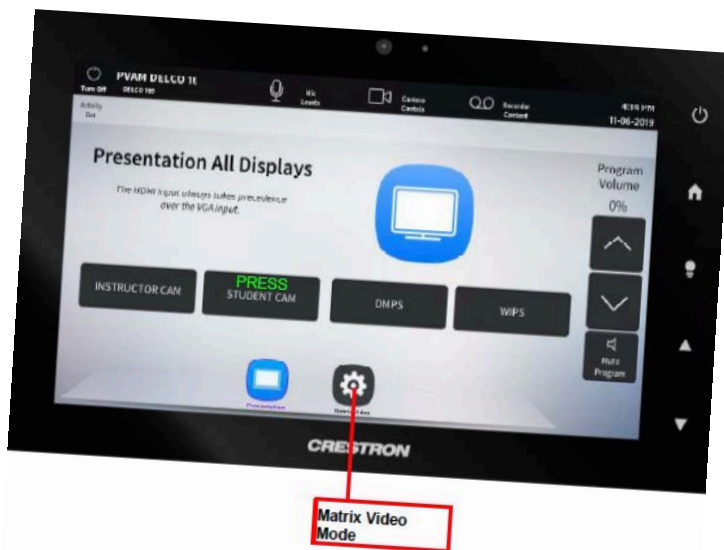
Because this section has multiple actions required to successfully execute matrix displaying, we will give scenarios for different displaying options.

Content Matrix

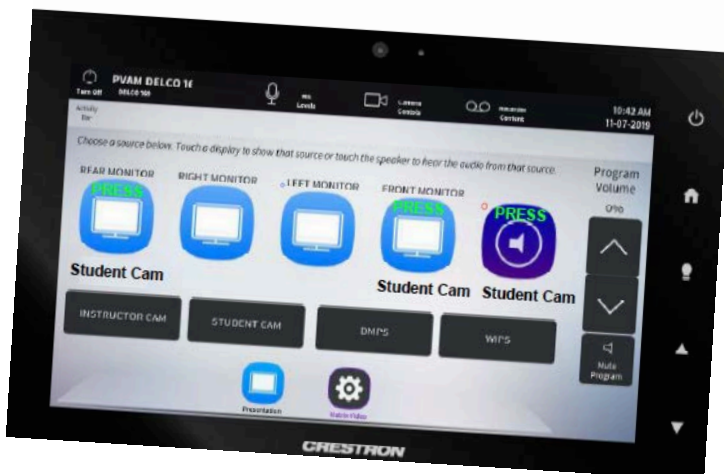


To display "**Student Cam**" on "**Front Monitor**" and "**Rear Monitor**" you must:

1. Press "**Student Cam**" in the "Matrix Video Mode" Screen.
2. Then press "**Rear Monitor**"
3. Then Press "**Front Monitor**"
4. Press the blue speaker to project sound from the source you want to hear.



Student Cam

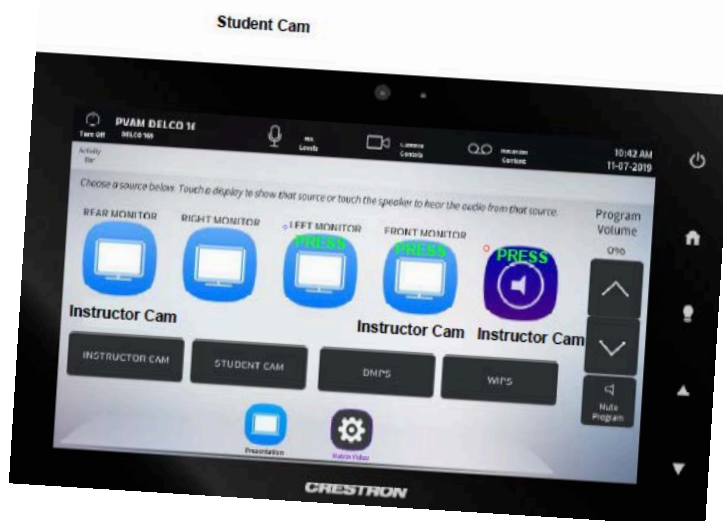
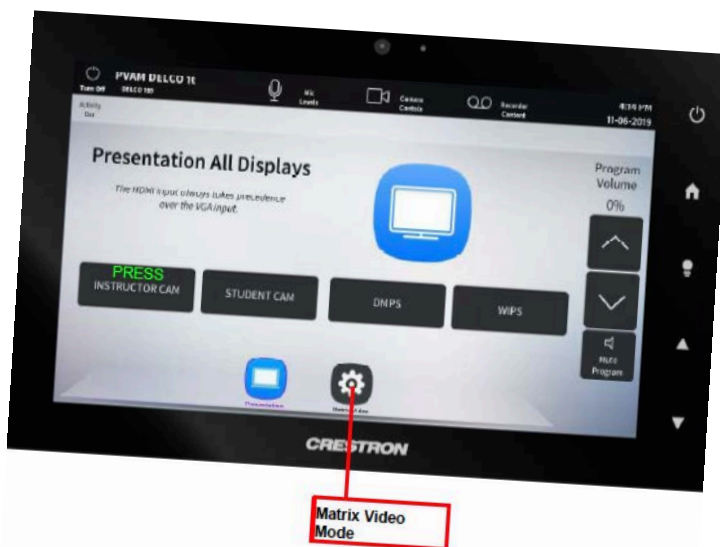


Content Matrix



To display "**Instructor Cam**" on "**Left Monitor**" and "**Rear Monitor**" you must:

1. Press "**Instructor Cam**" in the "Matrix Video" mode.
2. Press "**Rear Monitor**" and Then Press "**Left Monitor**"
3. Press the blue speaker to project sound from the source you want to hear.



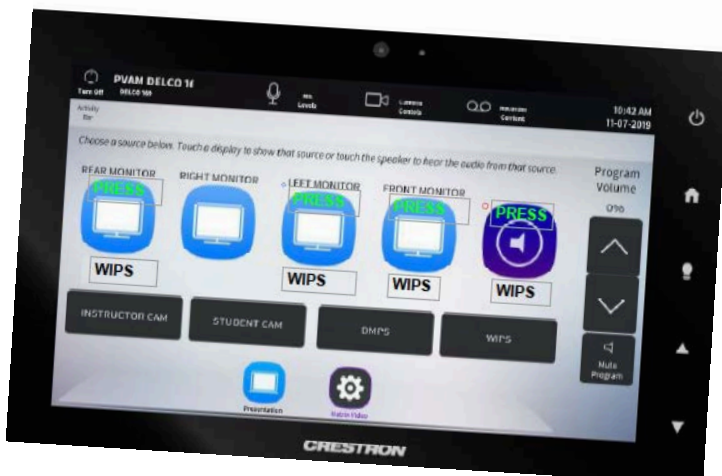
Content Matrix



To display "**WIPS**" on "**Left Monitor**" "Front Monitor", and "**Rear Monitor**" you must press:



1. Press "**WIPS**" in the "Matrix Video" mode.
2. Press "**Rear Monitor**"
3. Press "**Front Monitor**".
4. Press "**Left Monitor**".
5. Press the blue speaker to project sound from the source you want to hear.



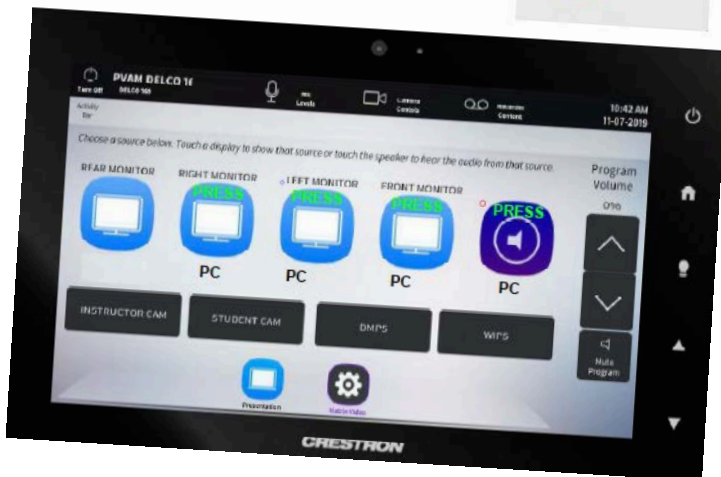
Content Matrix



Matrix Video Mode



Matrix Video Mode



To display "**PC**" on "**Right Monitor**", "**Front Monitor**" and "**Left Monitor**" you must press:

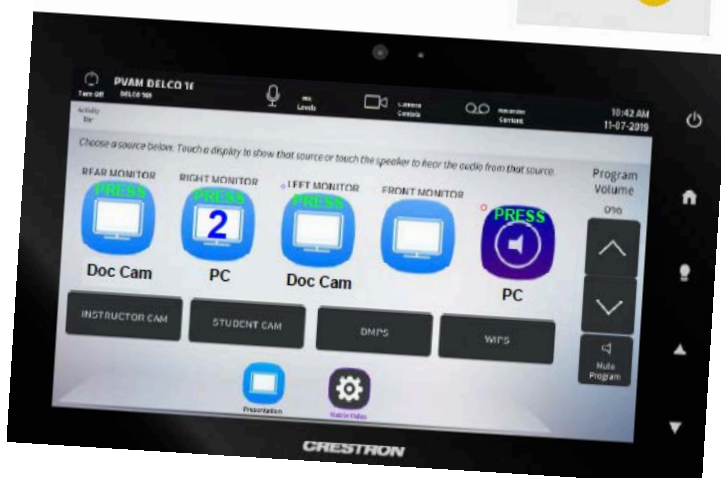
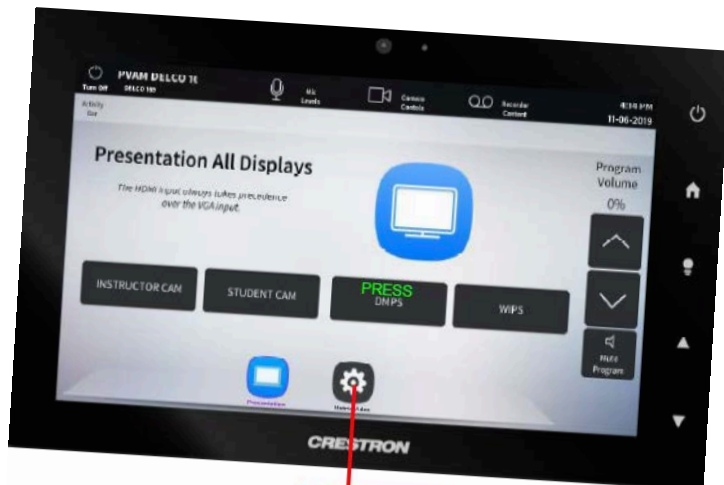
1. Press "**DPMS**" to access the podium sources in the "Matrix Video" mode.
2. Press "**PC**"
3. Press "**Right Monitor**".
4. Press "**Left Monitor**".
5. Press "**Front Monitor**".
6. Press the blue speaker to project sound from the source you want to hear.

Content Matrix



To display "**Doc Cam**" on "**Rear Monitor**" and "**Left Monitor**" with "**PC**" displayed on "**Right Monitor**" you must press:

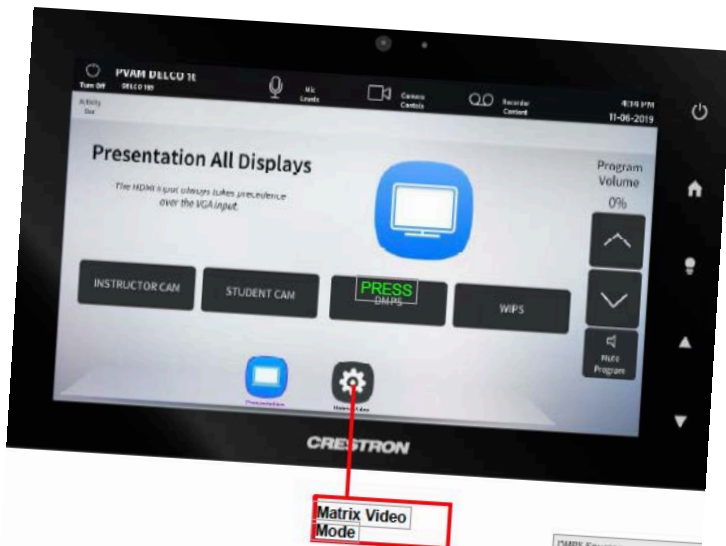
1. Press "**DPMS**" in the "Matrix Video" mode to access the podium sources.
2. Press "**Doc Cam**".
3. Press "**Rear Monitor**".
4. Press "**Left Monitor**".
5. Press "**DPMS**" again and select "**PC**".
6. Press "**Right Monitor**".
7. Press the blue speaker to project sound from the source you want.



Content Matrix



To display "**Laptop HDMI**" on "**Front Monitor**" and "**Right Monitor**" with "**PC**" displayed on "**Left Monitor**" you must press:



1. Press "**DPMS**" in the "Matrix Video" mode to access the podium sources.

2. Press "**Laptop HDMI**".

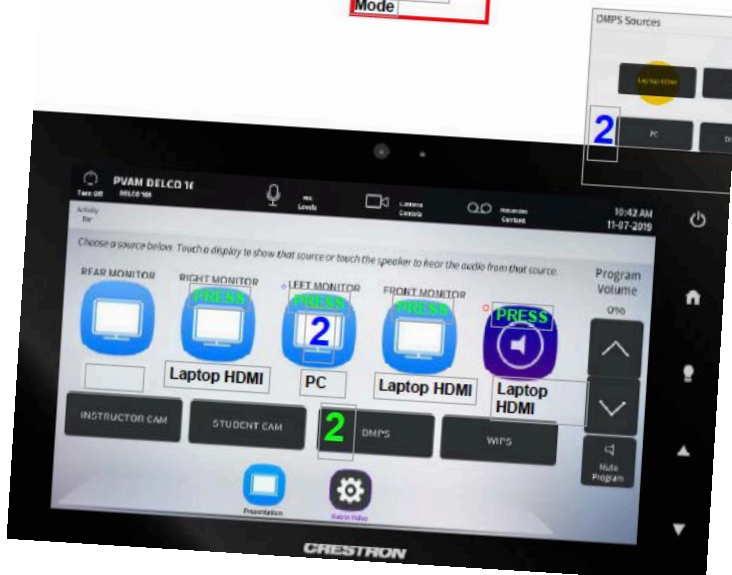
3. Press "**Front Monitor**".

4. Press "**Right Monitor**".

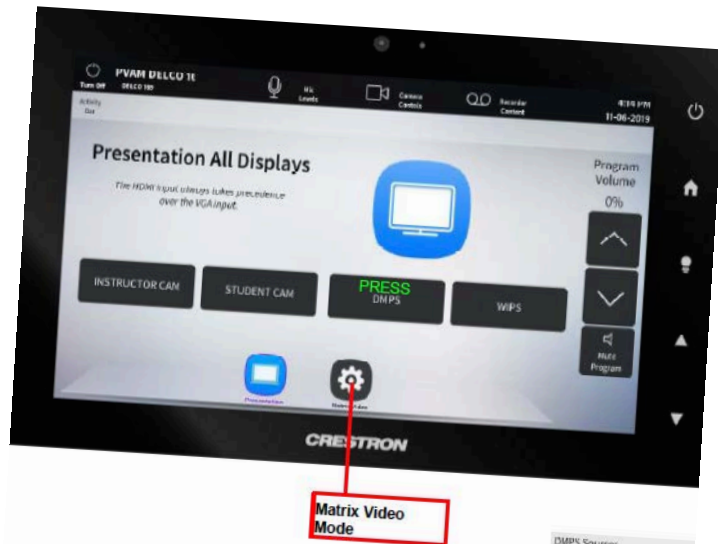
5. Press "**DPMS**" again and select "**PC**".

6. Press "**Left Monitor**".

7. Press the blue speaker to project sound from the source you want to hear.



Content Matrix



To display "**Laptop HDMI**" on "**Front Monitor**", "**USB-C**" on the "**Right Monitor**", "**PC**" displayed on "**Left Monitor**", and "**Doc Cam**" on the "**Rear Monitor**" you must press:

1. Press "**DPMS**" in the "Matrix Video" mode to access the podium sources.
2. Press "**Laptop HDMI**".
3. Press "**Front Monitor**".
4. Press "**DPMS**" again then press "**USB-C**".
5. Press "**Right Monitor**".
6. Press "**DPMS**" again then press "**PC**".
7. Press "**Left Monitor**".
8. Press "**DPMS**" again then press "**Rear Monitor**".
9. Press the blue speaker to project sound from the source you want to hear.

Microphone Levels

The microphone menu allow you to adjust the volume of a selected microphones.

To select the "Mic Level" menu you must press "**Mic Level**" from the top of the touchpad screen.



Microphone Levels

To manipulate the Podium Mic volume, use the **"Up"** and **"Down"** arrows, and the **"Mute"** icons under the **"Podium Mic"** column.

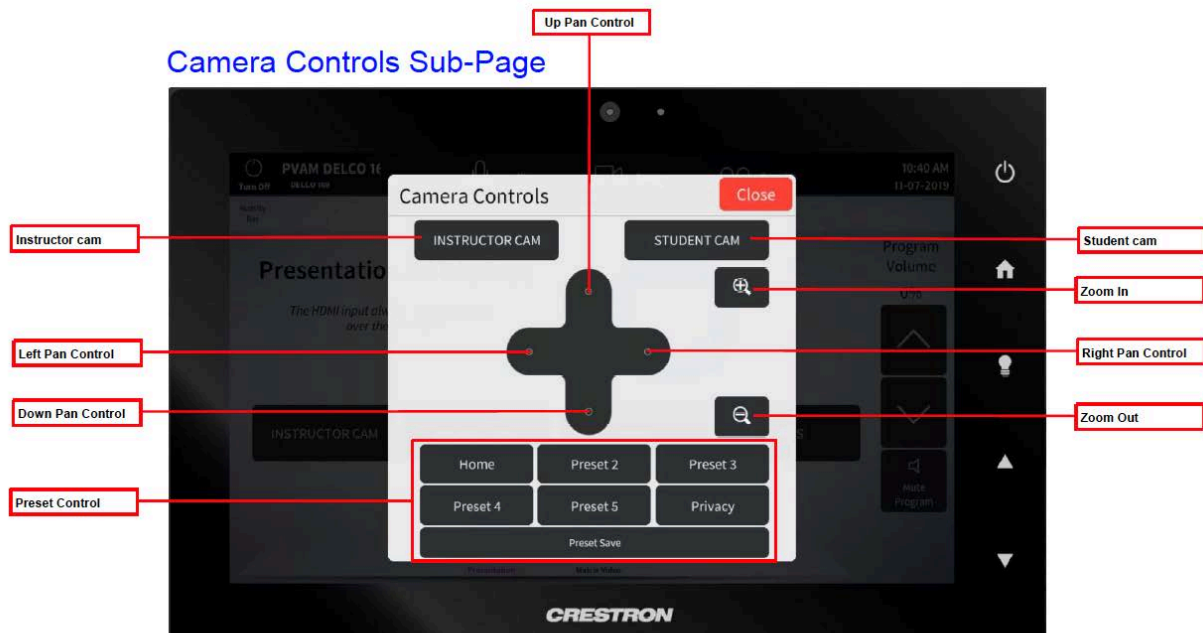


To manipulate the Hand Held Mic volume, use the **"Up"** and **"Down"** arrows, and the **"Mute"** icons under the **"Hand Held Mic"** column.

Camera Controls

The Camera Controls allow you to manipulate what is being shown through the camera. You are able to zoom in and zoom out on any area of the room within the viewing angle of the selected camera.

To access Camera Controls, press **"Camera Control"** from the top menu of the touchpad.



Press and Hold on preset Button For 5 secs to save Setting

Recorder Content

This AV system allow for recording content from the PC at the podium. You are able to record from applications such as Zoom, WebEx, BlueJean, etc. while logged in the podium PC.

Zoom session recordings are available after you end the Zoom session. These MP4 recordings are available in the Zoom folder in "Documents".

Click the "File Explorer" icon located at the bottom of the screen. Click "This PC" and click "Documents". The Zoom folder will contain recorded sessions.



To access the Recorder Content menu, select "**Recorder Content**" form the top of the touchpad.

To select the content you want to record from, select the source from the "**Recorder Source**" pop-up screen.

