

EFFECTIVE TEACHING PRACTICES



Students deserve quality instruction in every class. Advance faculty and student success by equipping instructors with tried-and-true, foundational practices that are having a transformative impact on student achievement and equity across higher ed.

Improve student outcomes

Increase faculty self efficacy

Cultivate a community of practice with
a common language and skillset



Students spend more time with faculty than any other campus professional, yet few have received formal, comprehensive preparation in how to teach.

Designed for new and seasoned instructors in any discipline, this course offers faculty a complete set of research-based teaching practices to build on their existing knowledge and expand their instructional toolkits.

By prompting faculty to apply and reflect on their learning, this program helps to reinvigorate educators and ensure students experience dynamic and inspired teaching campus wide.

LEARNING UNITS

Creating an Inclusive and Supportive Learning Environment

Inspiring Inquiry and Preparing Lifelong Learners

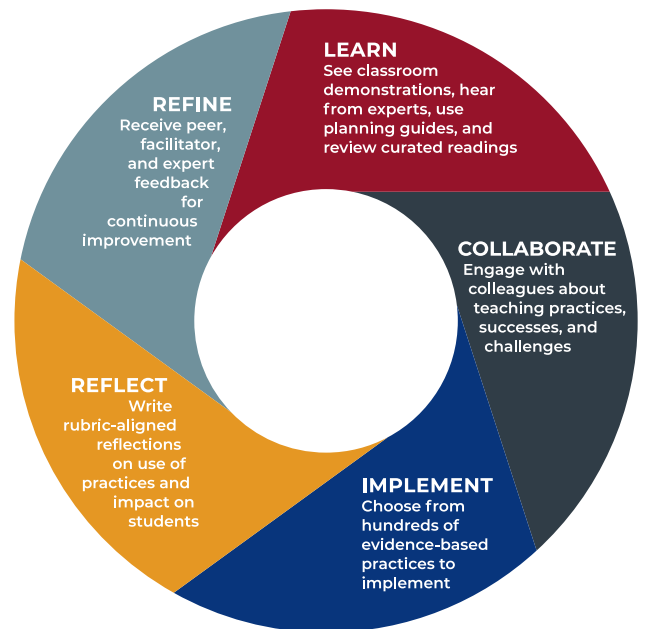
Promoting Active Learning

Designing Learner-Centered and Equitable Courses

Engaging Learning Design

ACUE faculty experience an asynchronous learning design that aligns with the best practices in effective online instruction. Each week, with support from a skilled facilitator, faculty will be:

- Engaging in authentic demonstrations of effective teaching
- Learning from nationally recognized experts
- Collaborating with colleagues in facilitated discussions
- Implementing new teaching practices and observing student impact
- Writing structured reflections, including plans to continually refine their practice



“ACUE really enlightened me to what current modern-day students’ needs are. Students are very different learners today than they were when I was in college. This has been a game-changer for me.”
 – LISA BURGESS, *Professor of Biological Science*, Broward College



ACUE

To learn more, visit [ACUE.org](https://www.acue.org)
 or email [partnerships@ACUE.org](mailto:partnerships@acue.org)