



# WOMEN IN AGRICULTURE CONFERENCE

FEBRUARY 23, 2023





# TABLE OF CONTENTS

Welcome .....	3
About PVAMU .....	4
About CAHS .....	8
About WIA .....	10
Agenda.....	13
Speaker Bios .....	15
Acknowledgments .....	22





# PRAIRIE VIEW A&M UNIVERSITY

COLLEGE OF AGRICULTURE  
AND HUMAN SCIENCES



Welcome!

On behalf of the Prairie View A&M University, College of Agriculture and Human Sciences, I welcome you to the Inaugural Women in Agriculture Conference. It is indeed an honor to host the conference and to welcome you to Prairie View A&M University. The PVAMU College of Agriculture and Human Sciences has a rich history of serving our stakeholders through our commitment to academic excellence, relevant research, and impactful community outreach. We continue that tradition as the host of this conference. Our

conferences remain a valuable resource for all participants. The agenda is filled with workshops and speakers reinforcing the conference's theme: Women in Agriculture: Seeding, Feeding, and Leading the Next Generation. By attending this conference, you decided to invest in yourself and your work. Your presence here is sure to make a positive impact on your daily efforts. Enjoy the first, of many more, Women in Agriculture Conference and take full advantage of the wealth of knowledge offered today.

Sincerely,

**Gerard E. D'Souza, Ph.D.**

Dean, College of Agriculture and Human Sciences

Director of Land Grant Programs



**PRAIRIE VIEW  
A&M UNIVERSITY**  
COLLEGE OF AGRICULTURE  
AND HUMAN SCIENCES

---

## Cooperative Extension Program



Welcome Conference Attendees:

On behalf of the Cooperative Extension Program (CEP) at Prairie View A&M University, I want to welcome you to our beautiful campus. We are excited to have you join us for this Inaugural Women in Agriculture Conference! The theme for this year is "Women in Agriculture: Seeding, Feeding, and Leading the Next Generation" and the speakers convened for this conference will not only address the unique needs of women in all sectors of the agricultural industry now, but for future generations as well.

It's an exciting time for all of us at CEP as we continue to grow and adapt, remaining always motivated and responsive to meeting the needs of those in the community. Regardless if you are a beginner producer or seasoned landowner, I believe you will find something to interest you. I hope you enjoy this conference and take every opportunity to engage our presenters and network. So relax, be engaged and we look forward to your comments and evaluations at the end of the conference.

Sincerely,

**Carolyn J. Williams, Ph.D.**

Executive Associate Director, Cooperative Extension Program



PRAIRIE VIEW  
A&M UNIVERSITY  
COLLEGE OF AGRICULTURE  
AND HUMAN SCIENCES



Agriculture and Natural  
Resources

---

## Cooperative Extension Program



Greetings and welcome to our Inaugural CAHS Cooperative Extension Program AgNR Women in Agriculture Conference.

We are excited you have decided to join us for this auspicious occasion. Our theme: Seeding, Feeding, and Leading the Next Generation acknowledges a direction of sustainable change. Today, you will hear from outstanding speakers, all of whom are women who have distinguished themselves in their respective professions in both the public and the private sectors.

As part of our newly developing Small Farm Institute (SFI) within PVAMU's Cooperative Extension Program's Agriculture and Natural Resources (AgNR) unit, the Women in Agriculture Conference is a part of the Women in Agriculture program launch.

For more information about the Small Farm Institute and how you can participate, please contact us at: (936) 261-5117 or via our website at <https://www.pvamu.edu/cahs/extension/agriculture-and-natural-resources/small-farm-institute/>

Our hope is that you will enjoy the conference and we invite your participation in our many upcoming programs and events.

Thank you,

**Clarence Bunch, Ph.D.**

Program Leader, Agriculture and Natural Resources



Welcome to the Women in Agriculture Conference!

Thank you for attending Prairie View A&M University's (PVAMU) Inaugural Women in Agriculture (WIA) Conference. We are beyond thrilled to be your host. As you visit the campus, we hope you get a true sense of the storied history and accomplished spirit of "The Hill" during your stay. Prairie View A&M University was founded in 1876 as one of two land-grant universities in the state of Texas. It is also the 2<sup>nd</sup> oldest public institution of higher learning in the state and home to the sprawling 750-acre, Gov. Bill and Vara Daniel Research Farm & Ranch, the International Goat Research Center, and the Small Farm Institute.

This year's theme, "Women in Agriculture: Seeding, Feeding, and Leading the Next Generation", captures the exceptional work women are doing in agricultural production and in their communities. In all areas of society, and certainly in Agriculture, women are seeding---planting literal seeds for crop production as well as seeds of wisdom about farming and gardening, livestock production, forestry and land retention. Women are feeding---delicious meals from their bountiful harvests as well as knowledge about the importance of agriculture in addressing the challenges of food deserts and providing communities with more whole food options. As they lay the groundwork in all areas of agriculture, women are leading, teaching, and preparing the next generation to take up the torch and continue to move forward. These laudable contributions of women, like many of the women who are present today, are anchored in the topic selection for the conference as we honor and celebrate all Women in Agriculture.

We have put together an exciting and informative program for you to enjoy. We look forward to celebrating a successful event and hope you will have a memorable experience.

Sincerely,  
2023 WIA Conference Co-Chairs



**Ashley Pellerin, M.S.**



**Kesha Henry, Ph.D.**



**Angela Moore, M.B.A.**

# WOMEN IN AGRICULTURE CONFERENCE

## CONFERENCE CO-CHAIRS

Kesha Henry - PVAMU Extension Program Specialist (Natural Resources)

Ashley P. James - PVAMU Extension Program Specialist (Livestock)

Angela Moore - PVAMU Program Coordinator (SFLR Program)

## AGRICULTURE & NATURAL RESOURCES REGIONAL PROGRAM LEADER

Clarence Bunch - PVAMU Agriculture & Natural Resources Unit

## CONFERENCE COMMITTEE

Kay Bell - National Women in Agriculture Association - Waco Chapter

Kasey Curtin - PVAMU Extension Agent Wood & Upshur Counties

Mary Derting - PVAMU Extension Agent Marion & Harrison Counties

Savannah Harrington - PVAMU Extension Agent Guadalupe & Gonzalez Counties

Carley Howell - PVAMU Wellness in Houston Extension Associate





# GENERAL INFORMATION: PRAIRIE VIEW A&M UNIVERSITY



*Excerpts taken from: "Prairie View, A Study In Public Conscience" by Dr. George Ruble Woolfolk - "A Centennial History of Texas A&M University, 1876-1976 Vol. II" by Henry C. Dethloff Edited by Frank D. Jackson*

## ESTABLISHMENT - 1876



Prairie View A&M University, the first state supported College in Texas for African Americans, was established during the Reconstruction Period after the Civil War. This was an historical period in which political and economic special interest groups were able to aggressively use the Federal Government to establish public policy, in an attempt to "alter or reshape the cultural milieu of the vanquished southern states". The University had its beginnings in the Texas Constitution of 1876, which, in separate articles, established an "Agricultural and Mechanical College" and pledged that "Separate schools shall be provided for the white and colored children, and impartial provisions shall be made for both." As a consequence of these constitutional provisions, the Fifteenth Legislature established "Alta Vista Agricultural and Mechanical College of Texas for Colored Youth" on August 14, 1876.

## ENROLLMENT OF THE FIRST STUDENTS - 1878



The Board of Directors purchased the lands of the Alta Vista Plantation (1388 acres), from Mrs. Helen Marr Kirby, the widow of the late Col. Jared Ellison Kirby, for the establishment of the State Agriculture & Mechanical College of Texas for Colored Youth. The College was named "Alta Vista Agriculture & Mechanical College for Colored Youth". The A&M Board of Directors was authorized to appoint a President of A&M College and Alta Vista College with an assigned principal station at Alta Vista to administer the college's day to day affairs. Confederate President Jefferson Davis recommended Mr. Thomas S. Gathright of Mississippi, also from Mississippi and he brought Mr. L.W. Minor, of Mississippi to serve as Principal. Eight young African American men, the first of their race to enroll in a state-supported college in Texas, began their studies on March 11, 1878.



## AGRICULTURE AND NATURAL RESOURCES



Agriculture and Natural  
Resources

The Agriculture and Natural Resources unit of the Cooperative Extension Program is the primary educational outreach unit of the university that disseminates research based knowledge to agricultural producers. County and specialist staffs assist small scale farmers and ranchers to become self sustaining and profitable

Texas, a state with more than 245,000 farms with an average size of 530 acres, leads the nation in total number of farms and ranches. Texas stretches across more than 130 million acres of land and over 90 percent of Texas farms and ranches encompasses family farms,

partnerships or family-held corporations. In 2015, the state of Texas was ranked 6th in agriculture with top exports of cattle, milk, broiler, cotton, corn, hay, sorghum, eggs, wheat, and rice and many of our clientele grow traditional row crops, raise cattle and small ruminants.

Within Prairie View A&M University (PVAMU) Cooperative Extension, the Agriculture and Natural Resources (AgNR) unit provides Texans research-based educational programs that focus on agriculture issues related to Livestock Production, Crop and Forage Production Economics and Management for Sustainable Agriculture. The AgNR unit has been a trusted resource for many farm and ranch landowners since 1876. Prairie View A&M University (PVAMU) Cooperative Extension, the Agriculture and Natural Resources (AgNR) clientele includes all of Texas farm producers, with emphasis on under-served, under represented, limited resources, and small farm producers.

Our service is customer-driven with professionals that are highly committed to providing information that is relevant to the farmers, ranchers and other stakeholders whom we serve. With more than 145,669 female; 11,000 African American; 30,000 Hispanic; 1600, Asian; 2800, American Indian; 86 Native American, our AgNR's Extension Agents work collaboratively with Extension Program Specialists and Research Scientists to provide pertinent research-based education programs that addresses critical issues for Sustainable Agriculture. Here at Prairie View A&M University (PVAMU) Cooperative Extension, the Agriculture and Natural Resources (AgNR), we are committed to partnering with a cadre of external collaborators, including Community Based Organizations, Cooperatives, Texas Agri-life, and the United States Department of Agriculture to address Ag and Natural Resources issues of today. Collaboratively, we are able to partnership with others in our approach that will allow us to advance on solving the critical environmental and natural resources issues of tomorrow.

We are excited about what the future holds for our Texan farmers and producers and we believe Texas future is bright. While we are firmly embracing traditional agriculture practices, we are also moving forward with our sights squarely set on the future agricultural sciences and technology that will enable our farmers to be sustainable, profitable and better stewards of our natural resources. With its history inextricably linked to the founding and the mission of the University, we invite you to reach out to us and allow us to strengthen you through our educational programs.

## OUR VISION AND MISSION

The AgNR vision is to be the Agricultural Leader through research-based science, community engagement, and outreach in the delivery of excellent high-quality agricultural education programs.

Our mission is to provide high-quality research-based agricultural education to meet Texans' needs, with emphasis on limited resources, underrepresented, and socially disadvantaged citizens.





## PROGRAM AREAS

The Agriculture Natural Resources Programs (AgNR) are created to address four critical issues (Sustainable Livestock Production, Crop Production and Utilization, Environmental Management, and Disaster Management & Outreach) identified in our Plan of Work (POW) from our needs assessment from counties we are present in Texas.

The programs are developed to educate farmers for long-term sustainability with their farming operation. The AgNR unit of the Cooperative Extension Program is the primary educational outreach unit of the university that disseminates research based knowledge to agricultural producers about agriculture topics. County and specialist staff assist farmers and ranchers to become self-sustaining and profitable.



**Livestock Management**  
**Small Farm Outreach**  
**Sustainable Agriculture**  
**Urban Agriculture**



**Specialty Crops**  
**Wildlife Management**  
**Sustainable Forestry African**  
**American Land Retention**

# GENERAL INFORMATION: COLLEGE OF AGRICULTURE AND HUMAN SCIENCES



The rich tradition of the College of Agriculture and Human Sciences (CAHS) dates back to 1879. We're leaders in the **true land-grant tradition** of academics, extension, and research.



## DEPARTMENT OF AGRICULTURE, NUTRITION AND HUMAN ECOLOGY

CAHS programs and education impact some of the largest industries and make invaluable strides in the areas of nutrition, food science, and dietetics.



## COOPERATIVE EXTENSION PROGRAM

CEP delivers practical research-based knowledge to small farm producers, families, aspiring entrepreneurs and youth in over 35 Texas counties.



## COOPERATIVE AGRICULTURAL RESEARCH CENTER

CARC helps Prairie View A&M University fulfill its land-grant mission of teaching, research and service.



With high impact practices, professional development activities, experiential learning activities, and an array of concentrations available for undergraduate programs in human nutrition and foods, agriculture, and agribusiness, as well as graduate programs in human sciences, the **Department of Agriculture, Nutrition and Human Ecology** turns out productive people who excel as park rangers, veterinarians, food inspectors, dietitians, and more.



Viewed as a trusted resource for information, **Cooperative Extension Program** agents and specialists respond not only with answers, but meet people where they are and move them along to the next level. We offer programs that work for people in the areas of 4-H & Youth Development (4H), Agriculture and Natural Resources (AGNR), Community and Economic Development (CED) and Family and Community Health (FCH).



The **Cooperative Agricultural Research Center (CARC)** is the unit within the College of Agriculture and Human Sciences that plays an important role in agriculture, natural resources and life sciences. Agricultural research in the Cooperative Agricultural Research Center is divided into the following areas: Animal Systems, Plant Systems, Food Systems, Natural Resources and Environmental Systems and Social Systems and Allied Research.



# GENERAL INFORMATION: **WOMEN IN AGRICULTURE PROGRAM**



## OVERVIEW



Under the leadership of Dr. Clarence Bunch in tandem with the president of the National Women in Agriculture Association, Kay Bell, the Women in Agriculture Program (WIA) was created by women of the Agriculture and Natural Resources Cooperative Extension Program at Prairie View A&M University.

The WIA program aims to provide agricultural, business, and hands-on education for women farmers, ranchers, landowners, or those interested in starting or improving their agricultural entrepreneurship. While the WIA program is developed with women in mind, we welcome anyone to participate in this program.



**SCAN ME**

## OUR MISSION

To help women in agriculture improve their businesses and farms, connect with other women, and increase financial security and entrepreneurship; to encourage the youth to value agriculture in the future by seeing local women in agriculture thrive.



## HOW THE WIA PROGRAM WORKS

The WIA Program is an annual program set off each spring with a day-long Women in Agriculture Conference that covers a myriad of topics of interest selected by women in agriculture; this conference also serves as a networking opportunity and showcases various agricultural vendors.

Post-conference, the WIA Program offers a yearly series of virtual and in-person educational classes. Classes are generally offered once a year and topics are subject to change from year to year.

## 2023 WOMEN IN AGRICULTURE PROGRAM EDUCATIONAL TOPICS



Small Tractor,  
Walk-Behind  
Tractor, and  
PTO Implement  
Training



Ag Business  
Planning



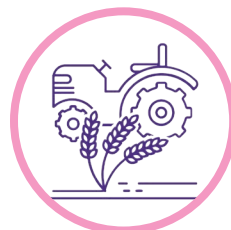
Forestry and  
Estate Planning



Taxes, Ag Tax  
Exemptions &  
Record Keeping



Utilizing Grants



Agrotourism



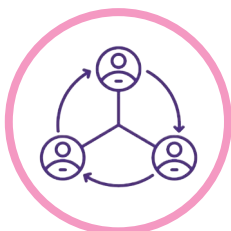
Beekeeping



Small and Mid-  
size Farm Tours



Becoming  
Certified Organic



Growing  
Community  
Connections



Soil Health and  
Sustainability



Organic Options  
for Soil Nutrient  
Management

# DISABILITY STATEMENT

The Cooperative Extension Program does not discriminate against anyone regardless of their race, color, national origin, religion, sex, gender, identity (including gender expression), sexual orientation, disability, age, marital status, family/parental status, income derived from a public assistance program, political beliefs, reprisal or retaliation for prior civil rights activity, in any program or activity. Persons who require communication in a language other than English or with a disability who require alternative means of communication of program information (braille, large print, audiotape, etc.), should call 936-261-3585 in advance.





# AGENDA AT A GLANCE

7:30 a.m. – 8:30 a.m.

**Check-In**

8:30 a.m. – 9:00 a.m.

**Welcome**

9:00 a.m. – 10:00 a.m.

**Opening Keynote**

Women In Agriculture

10:00 a.m. – 11:00 a.m.

**General Session I**

Mental Health & Wellness for Ag Producers

11:00 a.m. – 12:00 p.m.

**Concurrent Session I**

Cracking the Garden Contracting Code  
The Ag Census: Your Count Matters

12:00 p.m. – 1:00 p.m.

**LUNCH**

1:00 p.m. – 2:00 p.m.

**General Session II**

Ag Laws & Regs

2:00 p.m. – 3:00 p.m.

**Concurrent Session II**

Organic Production  
Producer Spotlight

3:00 p.m. – 4:00 p.m.

**Cap Note Speaker**

USDA Program Update

4:00 p.m. – 4:30 p.m.

**Closing Remarks and Adjourn**

# AGENDA DETAILED

---

7:30 A.M. CHECK IN

---

8:30 A.M. WELCOME

**PVAMU CAHS Administration & Special Guests**

---

9:00 A.M. OPENING KEYNOTE: WOMEN IN AGRICULTURE

**Christy Williams - Pharmacy Manager, Brookshire Brothers Pharmacy #40**

---

10:00 A.M. GENERAL SESSION I: MENTAL HEALTH & WELLNESS FOR AG PRODUCERS

**Shelbie Lambert - Content Strategist, UT Tyler Southwest Ag Center**

---

11:00 A.M. CONCURRENT SESSION I

**WORKSHOP I**

**Cracking the Garden Contracting Code**

LaTosha Okoiron, General Counsel and  
Compliance Director Houston Land Bank

**WORKSHOP II**

**The Ag Census: Your Count Matters**

Benita Hodge, Survey Administrator, USDA-  
National Agricultural Statistics Service (NASS)

---

12:00 P.M. LUNCH BREAK

---

1:00 P.M. GENERAL SESSION II: AGRICULTURAL LAWS & REGULATIONS

**Courtney Cox Smith - Attorney at James D. Bradbury, PLLC**

---

2:00 P.M. CONCURRENT SESSION II

**WORKSHOP I**

**Organic Production**

Brandi Lee Chandler, Coordinator Organic  
Certification Texas Department of Agriculture

**WORKSHOP II**

**Producer Spotlight: How I Got Started**

Ajshay James, Anaja Stables and Estate

---

3:00 P.M. CAP NOTE: USDA PROGRAM UPDATE

**Kristy Oates - State Conservationists, USDA Natural Resources Conservation Service**

---

4:00 P.M. CLOSING REMARKS AND ADJOURN

# PROGRAM SPEAKERS: BIOS



Christy Williams, Ph.D.  
Pharmacy Manager  
Brookshire Brothers Pharmacy #40

Dr. Christy Williams is a graduate of Xavier University of Louisiana where, in 2005, she earned the degree of Doctor of Pharmacy. She currently works as a Manager for Brookshire Brothers Pharmacy where she recently celebrated 16 years of service with this company. In addition to being a drug information specialist and preceptor to graduate students, Dr. Williams is a speaker, teacher, and writer. She appreciates the many ways in which she can use each one of these skills to help others gain the tools needed to achieve healthy goals and positive outcomes more consistently. She is the author of 31 Thirst QuenchHers, a one-month devotional and was the creator of Thursday's Thirst QuenchHer, a weekly blog of motivational and inspirational content for women of all ages and stages of life. Dr. Williams and her family live in one of the fastest growing cities in the country, Katy, TX. You can find her on any given day trekking walking trails throughout her neighborhood, typing at her computer, listening in amazement to the content of her two daughters' latest conversation topic, or wishing there was a way for the laundry, dishes, and meal prep to be taken care of indefinitely and passively! Share life with and find out more about Dr. Williams at [christywilliams.org](http://christywilliams.org).



Shelbie Lambert  
Content Strategist  
UT Tyler Southwest Ag Center

Shelbie Lambert serves as the Content Strategist for the Southwest Center for Agricultural Health, Injury Prevention and Education in Tyler, TX where she coordinates outreach projects, creates and disseminates strategic content and center communications in agriculture safety and health. She received her Master of Public Health degree from the University of Texas Health Science Center at Tyler. Her passion for mental health has led her to obtain her Mental Health First Aid Trainer certification. She uses this expertise to reduce stigma for those in rural communities.





**LaTosha Rushing-Okoiiron**  
**General Counsel and Compliance Director**  
**Houston Land Bank**

Mrs. Okoiiron serves as In-House General Counsel and Compliance Director for the Houston Land Bank (HLB) where she handles all legal and compliance matters for HLB, whose mission is to strategically acquire, dispose, and steward vacant, abandoned, and damaged properties into productive use and to catalyze transformative community and economic development for the City of Houston. Additionally, she has over fifteen years' experience as a real estate professional, experienced attorney, adjunct professor, public speaker, legislative advocate, business consultant and diversity & equity champion. She is experienced in contract and legal analysis in both private and public sectors, specializing in client relationship building and executive communication. A seasoned writer and discerning researcher, capable of reducing loss and liability of industry-leading corporations and government entities. Her experience includes small, mid-sized and large-corporate real estate transactions, federal governmental real estate acquisitions, RFP review and creation, contract resolution and training.



**Benita Hodge**  
**Survey Administrator**  
**USDA-National Agricultural Statistics Service (NASS)**

Benita Hodge is 2006 magna cum laude graduate of Prairie View A&M University with a B.S. in Agriculture Science with emphasis in Agronomy. Benita's first job was with the United States Department of Agriculture (USDA) in 2001 as an intern, and she has been with the department ever since. First, working for the USDA - Agriculture Research Service in Lubbock, Texas for several, as student intern. Benita began her career as an Agricultural Statistician with the USDA -National Agricultural Statistics Service in 2007. Her first tour with USDA-NASS was in Des Moines, Iowa where she served as the National Livestock Slaughter Statistician as a part of the Statistics Division Livestock Branch in Washington, D.C. In 2010, Benita relocated to East Lansing, Michigan to gain more experience in other sectors of the agency. There, nominated by her peers, she received the Administrator's Award in 2011 for superior project management and leadership. While in Michigan, she earned a Geographic Information Systems Certificate. She is recognized as the first African American Female to receive the American FFA degree, the highest degreed awarded by the National FFA Organization. She has many talents and skills, enjoys being creative, loves volunteering in the community, traveling, and spending time with family and friends.



**Courtney Cox Smith**  
**Attorney**  
**James D. Bradbury, PLLC**

Courtney Cox Smith enjoys a diverse practice with James D. Bradbury, PLLC, focusing on a wide range of issues of importance to Texas landowners and agricultural producers, including environmental, water law, eminent domain, regulatory, and general litigation. Courtney assists clients with cases before state and federal courts, the State Office of Administrative Hearings, Texas Commission on Environmental Quality, and Public Utility Commission of Texas. She has extensive experience in preparing and filing appellate amicus briefs covering important policy matters for Texas agriculture, including before the Texas Courts of Appeals, Texas Supreme Court, and the Fifth Circuit Court of Appeals. Courtney grew up in Fort Worth, Texas. She attended Baylor University, where she earned her Bachelor of Arts degree in American Studies. After graduating from Baylor, Courtney attended and received her law degree from Boston College Law School. After law school, Courtney returned to Texas where she practiced in Fort Worth and Austin before joining James D. Bradbury, PLLC. Courtney lives in Houston with her son, Wyatt.



**Ajshay James**  
**Author, Mediator, Arbitrator, Founder and CEO**  
**Anaja Stables and Estate**

Ajshay “Sha” James is a globally recognized agricultural mediator, business development strategist, farmer advocate and agricultural landowner. James is the proud owner of Anaja Stables and Estate farm in Cypress, TX and Anaja Holdings in upstate New York. James has worked internationally and domestically to ensure best practices, rights of farmers and Agri-development committed to sustainability, expansion and positive global impact. James has been invited by Heads of state and industry for the purpose human rights advocacy, agricultural enterprise and business development strategy. James for over two decades has fought tirelessly for justice and equity for landowners, farmers, agricultural producers, land rights and for those in historically underserved groups. James has worked with grassroots, local, national and international leaders along with organizations and has developed a strong network and cultivated relationships in the world of business and advocacy. James is no stranger to capitol hill having worked for several members of Congress throughout her career. James is a member of the United Nation’s Mediators Without Borders and a national organizer of a farm network for the underserved. She serves on numerous local, national and international board of directors. Sha has been featured on Some of James’ work has led her to countries/nations including but not limited to: Democratic Republic of Congo, Ghana, Nigeria, Dominican Republic, Brazil, Haiti, Ghana, Bahamas, St. Lucia, Jamaica and more. A heart the size of Texas, James’ loves include her daughter and junior farmer, all things equine and serving others.



**Brandi Lee Chandler**  
**Organic Certification Coordinator**  
**Texas Department of Agriculture**

Brandi Chandler is the Coordinator for the Texas Department of Agriculture (TDA) Organic Certification Program. TDA is an accredited certifying agent of the USDA National Organic Program whose mission is to ensure the integrity of organic agriculture products produced and manufactured in Texas by providing certification services. The program helps Texas farmers diversify their operations and capture a larger share of a growing premium market, and it helps ensure the authenticity of the organic marketing claim. Before becoming coordinator in 2020, she was an organic inspector with TDA for 12 years. She received her Bachelor's in Animal Science from Tarleton State University as well as her Master's in Agriculture which focused on ruminant nutrition. She lives in McGregor, TX with her husband and two sons.



**Kristy Oates**  
**State Conservationists**  
**USDA Natural Resources Conservation Service**

As a member of the United States Senior Executive Service, Kristy serves as the State Conservationist in Texas for the USDA Natural Resources Conservation Service. During her 27 years of service, Kristy held multiple technical, supervisory, and leadership positions in Texas as well as detail assignments in multiple states. Her work included executive level positions of Acting Division Director of Conservation Planning and Technical Assistance Division in Washington DC, as well as Acting State Conservationist in Iowa and Minnesota. Kristy leads a diverse workforce of approximately 700 employees in 227 field offices across Texas to deliver voluntary, private lands conservation assistance throughout the estimated 142 million acres of farms, ranches, and family forests. Through her career, she fostered new opportunities to increase streamlining and efficiencies in landscape initiatives. Her leadership created a combined leveraging of federal, state, local, and private resources to maximize the impact of implementing conservation across the country. Kristy holds a Bachelor of Science degree in Agriculture from Sam Houston State University, and she is a graduate of the U.S. Department of Agriculture Emerging Leaders Development Program from The George Washington University Center for Excellence in Public Leadership. She received her Senior Executive Service (SES) certification in 2020.











# SPONSOR **ACKNOWLEDGMENTS**

## PLEASE VISIT OUR CONFERENCE SPONSOR AND PARTNER BOOTHS

USDA - Farm Service Agency

USDA - Natural Resources Conservation Service

USDA - National Agricultural Statistics Service

Capital Farm Credit

Houston Land Bank

Texas Department of Agriculture

Texas Coalition of Rural Landowners

National Women in Agriculture Association

# SPECIAL ACKNOWLEDGMENTS

**A SPECIAL THANKS TO THE INDIVIDUALS BELOW FOR THEIR CONTRIBUTIONS TO THIS YEAR'S PROGRAM:**

PVAMU College of Agriculture and  
Human Sciences Information and Impact Center

Thanks to all of our volunteers for your support in making this a successful conference.





# *Keep up with* **CAHS**

[www.pvamu.edu/cahs](http://www.pvamu.edu/cahs)

FOLLOW US  
@pvamucahs



The Cooperative Extension Program does not discriminate against anyone regardless of their race, color, national origin, religion, sex, gender identity (including gender expression), sexual orientation, disability, age, marital status, family/parental status, income derived from a public assistance program, political beliefs, reprisal or retaliation for prior civil rights activity, in any program or activity. Persons who require communication in a language other than English or with a disability who require alternative means of communication of program information (braille, large print, audiotape, etc.), should call 936-261-3585 in advance.