

**APPENDIX C**  
**DOMESTIC, SANITARY SEWER & STORM SEWER SYSTEMS**

## Wastewater Treatment Plant Operator Log

WASTEWATER TREATMENT PLANT REPORT

DISTRICT: PVAM

MONTH / YEAR: JAN, 2017

OPR INITIALS / TIME	HL, 8:00	HL, 7:00	HL, 7:00	H, 7:00	HL, 7:00	HL, 5:00	H, 14:00
DAY / DATE	MON / 16	TUES / 17	WED / 18	THUR / 19	FRI / 20	SAT / 21	SUN / 22
DEGREES (F)	RAIN / 66°	cloudy 77°	cloudy 55°	RAIN 53°	cloudy 59°	Fog 63°	HL 64°
RAINFALL (INCHES)	1.0"	1.0"	2.0"	0.28"	0.10	0.60	0
FLOW METER READING	25771902	25772894	25774112	25775076	25776027	25776863	25777977
FLOW METER READING	25771375	25771902	25772894	25774112	25775076	25776027	25776863
TOTAL FLOW (MGD)	0.527	0.992	1.218	0.964	0.951	0.836	1.114
FLOW MEASURED (IN./FT.)	10.6"	9.7"	11.0"	10.0"	9.4"	8.6"	8.9"
2 HR PEAK FLOW (GPM)	750	861	889	778	1.194	694	638
24 HR FLOW							
TIME COLLECTED	8:00	7:00	7:00	7:00	9:00	5:00	14:00
TIME READ	9:30	9:00	9:00	9:30	9:30	7:30	15:30
DO (mg/L)	8.3	8.2	8.4	8.3	8.5	8.1	8.6
SAMPLE TEMPERATURE	69.2	69.0	66.7	65.3	66.0	68.1	66.6
PH (S.U.)	7.2	7.2	7.2	7.1	7.1	7.1	7.3
CLARIF D.O. (mg/L) # / #	1	1	1	1	1	1	1
CLARIF D.O. (mg/L) # / #	1	1	1	1	1	1	1
CLARIF S.B.D. (FT.) # / #	1	1	1	1	1	1	1
CLARIF S.B.D. (FT.) # / #	3, 2	5, 2	4, 2	4, 2	4, 2	4, 2	2, 4
INST. Flow	1.178	0.980	1.326	1.013	0.895	0.673	0.709
COPY FLOW METER	639803	640463	641235	641885	642431	642947	643926
COPY FLOW METER	639568	639803	640463	641235	641885	642431	642941
TOTAL FLOW	0.235	0.660	0.772	0.650	0.546	0.510	0.785
NH <sub>3</sub>	0.00	0.01	0.02	0.02	0.00	0.00	0.11
Kwhr	3085.0	3087.2	3089.4	3091.5	3093.6	3095.6	3098.6
DISTRICT RESIDUAL	1.07	0.97	0.69	0.87	0.83	0.86	0.94
VEGETATION #	1	1	1	1	1	1	1
Sampler Temp.	9.4°	4.6°	0.2°	4.6°	-0.2°	7.2°	
Gen. ETM.	603.6						

IPERVISOR: \_\_\_\_\_

DATE: \_\_\_\_\_

\*\* COMPLETED FORM IS TO BE SUBMITTED TO REGULATORY WEEKLY \*\*



WASTEWATER TREATMENT PLANT REPORT

DISTRICT: PVAM

MONTH / YEAR: JAN / 2017

OPR INITIALS / TIME	HK, 7:00	HK, 7:00	HK, 7:00	HK, 7:00	HK, 7:00		
DAY / DATE	MON / 9	TUES / 10	WED / 11	THUR / 12	FRI / 13	SAT / 14	SUN / 15
DEGREES (F)	cloudy 52°	cloudy 65°	cloudy 64°	PIE 68°	PIE 70°	PIE 69°	RAIN 67°
RAINFALL (INCHES)	0	0	0	0	0	0	0
FLOW METER READING	25769343	25769428	25769441	25770367	25770667	25770984	25771375
FLOW METER READING	25769028	25769343	25769428	25769944	25770367	25771067	25770984
TOTAL FLOW (MGD)	.315	.285	.316	.423	.300	.317	.291
FLOW MEASURED (IN./FT.)	5.5"	5.2"	5.1"	6.2"	5.3"	6.0	6.5
2 HR PEAK FLOW (GPM)	389	306	444	278	222	306	361
24 HR FLOW							

TIME COLLECTED	7:00	7:00	7:00	7:00	7:00	0700	1000
TIME READ	8:30	8:30	8:30	9:00	9:00	0800	1100
DO (mg/L)	9.3	9.6	9.0	8.8	8.3	8.3	8.6
SAMPLE TEMPERATURE	53.5	58.0	61.2	70.4	66.4	67.6	68.1
PH (S.U.)	7.5	7.4	7.3	7.2	7.2	7.2	7.4

CLARIF D.O. (mg/L) # / #	1	1	1	1	1	1	1
CLARIF D.O. (mg/L) # / #	1	1	1	1	1	1	1
CLARIF S.B.D. (FT.) # / #	1	1	1	1	1	1	1
CLARIF S.B.D. (FT.) # / #	3, 2	2, 3	3, 2	2, 2	3, 2	2, 3	0, 4

INST. FLOW	.221	.195	.188	.305	.210	.291	.355
COPY FLOW METER	638523	638693	638860	639036	639195	639366	639528
COPY FLOW METER	638333	638523	638693	638860	639036	639195	639366
TOTAL FLOW	.190	.170	.167	.176	.179	.171	.202
NH3	3.8	2.2	0.58	4.9	3.9	0.41	0.03
Kwhr	3071.8	3073.5	3075.4	3077.3	3079.2	3081.2	3083.3
DISTRICT RESIDUAL	0.79	0.84	0.81	0.87	1.24	.78	.93
AGRATION #	1	1	1	1	1	1	1
Sampler Temp.	2.86						
Gen ETM.	602.3					2.9	2.6
						602.3	602.3

IPERVISOR: \_\_\_\_\_

DATE: \_\_\_\_\_

\*\* COMPLETED FORM IS TO BE SUBMITTED TO REGULATORY WEEKLY \*\*



WASTEWATER TREATMENT PLANT REPORT

DISTRICT: PVAM

MONTH / YEAR: Jan. / 2017

OPR INITIALS / TIME	MON / 2	TUES / 3	WED / 4	THUR / 5	FRI / 6	SAT / 7	SUN / 8
DAY / DATE	MON / 2	TUES / 3	WED / 4	THUR / 5	FRI / 6	SAT / 7	SUN / 8
DEGREES (F)	RAIN / 61°	cloudy / 50°	cloudy / 39°	cloudy / 48°	cloudy / 30°	cloudy / 20°	Sunny / 29°
RAINFALL (INCHES)	1.85"	.04"	0	0	0	0	0
FLOW METER READING	25766829	25767378	25767765	25768121	25768452	25769760	25769088
FLOW METER READING	25766470	25766829	25767398	25767765	25768121	25768452	25768760
TOTAL FLOW (MGD)	.359	.569	.367	.356	.331	.308	.268
FLOW MEASURED (IN./FT.)	10.5"	6.5"	6.0	7.9"	6.6"	6.3"	5.5"
2 HR PEAK FLOW (GPM)	472	250	278	250	361	138	194
24 HR FLOW							
TIME COLLECTED	9:00	7:30	7:00	7:00	7:00	7:00	8:00
TIME READ	10:30	9:00	9:00	8:30	8:30	8:30	9:30
DO (mg/L)	8.9	9.0	9.2	9.2	9.8	10.59	11.02
SAMPLE TEMPERATURE	65.1	62.5	61.0	60.4	56.8	51.2	49.0
PH (S.U.)	7.3	7.4	7.3	7.4	7.4	7.4	7.4
CLARIF D.O. (mg/L) # / #	1 / 1	1 / 1	1 / 1	1 / 1	1 / 1	1 / 1	1 / 1
CLARIF D.O. (mg/L) # / #	1 / 1	1 / 1	1 / 1	1 / 1	1 / 1	1 / 1	1 / 1
CLARIF S.B.D. (FT.) # / #	1 / 1	1 / 1	1 / 1	1 / 1	1 / 1	1 / 1	1 / 1
CLARIF S.B.D. (FT.) # / #	3, 3	1, 3	3, 2	2, 3	3, 2	3, 2	3, 3
INST. FLOW	1.235	0.333	.300	.389	.329	.218	.136
50PV FLOW METER	636653	637215	637526	637736	637924	638111	638333
20PV FLOW METER	636480	636653	637215	637526	637736	637924	638111
TOTAL FLOW	.173	.569	.311	.210	.188	.187	.222
NH <sub>3</sub>	0.00	0.00	0.00	0.00	0.00	0.00	0.46
Kwhr	3059.6	3061.4	3063.2	3065.1	3066.9	3068.7	3070.1
DISTRICT RESIDUAL	0.64	0.62	0.62	0.72	0.67	0.65	0.72
GENERATION #	1	1	1	1	1	1	1
Sampler Temp.	-0.2°	1.9°	2.0°	1.0°			
Gen ETM.	593.4	593.4				593.4	593.4

SUPERVISOR: \_\_\_\_\_

DATE: \_\_\_\_\_

\*\* COMPLETED FORM IS TO BE SUBMITTED TO REGULATORY WEEKLY \*\*



WASTEWATER TREATMENT PLANT REPORT

DISTRICT: PVAM

MONTH / YEAR: JAN. / 2017

OPR INITIALS / TIME	730, JJ	900, JJ	730, JJ	730, JJ	730, JJ	930, JJ	1000, JJ
DAY / DATE	MON / 23	TUES / 24	WED / 25	THUR / 26	FRI / 27	SAT / 28	SUN / 29
DEGREES (F)	43° sun	65° sunny	64° cloudy	45° cloudy	35° cloudy	45° cloudy	65° sunny
RAINFALL (INCHES)	0.2"	Ø	0.3"	Ø	Ø	Ø	Ø
FLOW METER READING	25779416	25779075	25779635	25780224	25780740	25781251	25781923
FLOW METER READING	25777977	25779416	25779075	25779635	25780224	25780740	25781291
TOTAL FLOW (MGD)	.439	.659	.560	.589	.516	.541	.642
FLOW MEASURED (IN./FT.)	9.0"	8.4	9.0"	7.3"	7.4"	6.5"	8.0"
2 HR PEAK FLOW (GPM)	611	527	500	472	472	361	500
24 HR FLOW							

TIME COLLECTED	730	900	730	730	730	930	1000
TIME READ	930	1100	930	930	930	1030	1230
DO (mg/L)	8.48	8.36	8.15	8.48	9.01	9.06	9.05
SAMPLE TEMPERATURE	65.8	64.9	67.3	63.2	59.5	58.8	62.0
PH (S.U.)	7.21	7.23	7.19	7.2	7.3	7.3	7.2

CLARIF D.O. (mg/L) # / #	1	1	1	1	1	1	1
CLARIF D.O. (mg/L) # / #	1	1	1	1	1	1	1
CLARIF S.B.D. (FT.) # / #	1	1	1	1	1	1	1
CLARIF S.B.D. (FT.) # / #	4, 2	2, 4	2, 4	4, 2	2, 4	2, 4	4, 2

INSTR. FLOW	0.730	0.574	0.561	0.423	0.391	0.527	0.557
COPY FLOW METER	644014	644357	644608	644852	645084	645294	645564
COPY FLOW METER	643726	644014	644357	644605	644852	645084	645294
TOTAL FLOW	.288	.343	.248	.247	.252	.210	.270
NH <sup>3</sup>	0.21	0.03	0.02	50	25	0.57	0.21
Kwhr	3099.9	3102.0	3103.9	3105.9	3107.8	3109.8	3112.1
DISTRICT RESIDUAL	.86	.81	.85	.84	.94	.81	.84
GENERATION #	1	1	1	1	1	1	1
SAMPLER TEMP.	1.2°	6.2°	3.1°	2.2	3.8°	4.5°	3.2°
GEN. ETM.	604.8						

SUPERVISOR: \_\_\_\_\_ DATE: \_\_\_\_\_

\*\* COMPLETED FORM IS TO BE SUBMITTED TO REGULATORY WEEKLY \*\*



WASTEWATER TREATMENT PLANT REPORT

DISTRICT: PVAM

MONTH / YEAR: JAN/FEB, 2017

OPR INITIALS / TIME	HL, 7:00	HL, 9:00	JJ, 7:00	HL, 7:00	HL, -	HL, -	HL, -
DAY / DATE	MON / 30	TUES / 31	WED / 1	THUR / 2	FRI / 3	SAT / 4	SUN / 5
DEGREES (F)	clear 41°	sunny 64°	fog 57°	cloudy 64°	cloudy 48°	cloud 48°	cloudy 67°
RAINFALL (INCHES)	0	0	0.1	0	0	0	0
FLOW METER READING	25782442	25782999	25783490	25783973	25784476	25784939	25785376
FLOW METER READING	25781923	25782412	25782999	25783480	25783973	25784476	25784977
TOTAL FLOW (MGD)	.519	.557	.481	.493	.503	.461	.439
FLOW MEASURED (IN./FT.)	9.5"	9.7"	8.5"	6.5"	6.8"	7.0"	7.5"
2 HR PEAK FLOW (GPM)	500	472	500	472	305	472	444
24 HR FLOW							
TIME COLLECTED	10:00	9:00	7:00	7:00	7:00	8:00	08:00
TIME READ	11:30	10:30	9:00	8:30	8:30	9:00	09:00
DO (mg/L)	8.9	8.7	8.6	8.2	8.4	9.8	8.6
SAMPLE TEMPERATURE	61.8	62.7	63.0	66.4	64.6	61.7	64.9
PH (S.U.)	7.2	7.3	7.4	7.2	7.2	7.2	7.3
CLARIF D.O. (mg/L) # / #	1 / 1	1 / 1	1 / 1	1 / 1	1 / 1	1 / 1	1 / 1
CLARIF S.B.D. (FT.) # / #	1 / 1	1 / 1	1 / 1	1 / 1	1 / 1	1 / 1	1 / 1
CLARIF S.B.D. (FT.) # / #	2, 3	3, 2	2, 5	4, 2	2, 4	4, 2	5, 1
INST. FLOW	.902	.945	.692	.195	.363	.439	.521
SOPY FLOW METER	645745	646000	646195	646395	646603	646809	646987
COPI FLOW METER	645564	645745	646000	646195	646395	646603	646809
TOTAL FLOW	.181	.255	.195	.200	.208	.206	.176
NH <sub>3</sub>	0.34	0.06	0.10	0.00	0.03	0.04	0.03
Kwhr	3113.6	3115.9	3117.7	3119.5	3121.6	3123.6	3125.6
DISTRICT RESIDUAL	0.87	0.88	0.83	0.92	0.85	0.87	0.88
GENERATION #	1	1	1	1	1	1	1
Sampler Temp.	5.0°	3.5°	5.3°	3.0°	1.0°	1.3	1.4
Gen ETM.	606-D						

SUPERVISOR: \_\_\_\_\_

DATE: \_\_\_\_\_

\*\* COMPLETED FORM IS TO BE SUBMITTED TO REGULATORY WEEKLY \*\*



# WASTEWATER TREATMENT PLANT REPORT

DISTRICT: PVAM

MONTH / YEAR: MARCH, 2017

OPR INITIALS / TIME	H, 8:00	H, 8:00	H, 7:00	H, 7:00	H, 7:00	H, 8:00	H, 14:00
DAY / DATE	MON / 20	TUES / 21	WED / 22	THUR / 23	FRI / 24	SAT / 25	SUN / 26
DEGREES (F)	cloudy 66°	cloudy 63°	cloudy 64°	cloudy 64°	PI/L 68°	clear 72°	Sunny 81°
RAINFALL (INCHES)	0	0	0	0	0	0	0
FLOW METER READING	25807648	25808092	25808570	25809088	25809552	25810270	25810692
FLOW METER READING	25807325	25807648	25808092	25808570	25809088	25809552	25810270
TOTAL FLOW (MGD)	.323	.444	.478	.518	.464	.718	.422
FLOW MEASURED (IN./FT.)	6.2"	6.8"	6.2"	5.8"	5.0"	7.7"	8.1"
2 HR PEAK FLOW (GPM)	389	417	500	500	500	444	472
24 HR FLOW							

TIME COLLECTED	8:00	8:00	7:00	7:00	7:00	8:00	14:00
TIME READ	9:30	9:30	8:30	8:30	8:30	9:30	15:30
DO (mg/L)	8.0	7.7	7.8	7.6	8.0	8.1	8.0
SAMPLE TEMPERATURE	70.2	71.2	71.4	72.1	71.7	72.7	74.3
PH (S.U.)	7.5	7.4	7.4	7.3	7.4	7.4	7.5

CLARIF D.O. (mg/L) # / #	1	1	1	1	1	1	1
CLARIF D.O. (mg/L) # / #	1	1	1	1	1	1	1
CLARIF S.B.D. (FT.) # / #	1	1	1	1	1	1	1
CLARIF S.B.D. (FT.) # / #	2, 2	1, 2	2, 2	2, 2	2, 2	2, 2	2, 2

INST. FLOW	.342	.372	.310	.261	.179	.523	.595
50PV FLOW METER	657570	657752	657894	658103	658294	658589	658775
30PV FLOW METER	657429	657570	657752	657894	658103	658294	658589
TOTAL FLOW	.141	.182	.142	.209	.191	.295	.186
NH <sup>3</sup>	0.00	0.03	0.05	0.07	0.07	0.04	
Kwhr	3211.5	3213.4	3215.4	3217.5	3219.6	3222.6	3224.6
DISTRICT RESIDUAL	0.81	0.65	1.35	0.77	0.74	0.82	0.76
VENTILATION #	1	1	1	1	1	1	1
Sampler Temp.							
Gen. ETM.	614.6						
	1	1	1	1	1	1	1

SUPERVISOR: \_\_\_\_\_

DATE: \_\_\_\_\_

\*\* COMPLETED FORM IS TO BE SUBMITTED TO REGULATORY WEEKLY \*\*



WASTEWATER TREATMENT PLANT REPORT

DISTRICT: PVAM

March / MONTH / YEAR: April / 2017

OPR INITIALS / TIME	JJ, 900	JJ, 900	900, JJ	900, JJ	900, JJ	530, JJ	1030, JJ
DAY / DATE	MON / 27	TUES / 28	WED / 29	THUR / 30	FRI / 31	SAT / 1	SUN / 2
DEGREES (F)	71° Cloudy	71° Cloudy	Rain 64°	Sunny 58°	Sunny 64°	Partly 63°	Cloudy 75°
RAINFALL (INCHES)	0	0	.27	.05	0	0	0.93
FLOW METER READING	25811035	25811573	25812094	25812608	25813049	25813481	25814143
FLOW METER READING	25810692	25811035	25811573	25812094	25812608	25813049	25813481
TOTAL FLOW (MGD)	343	538	521	514	441	432	662
FLOW MEASURED (IN./FT.)	8.0"	9.5"	7.5	8.5	8.0	8.5"	9.0"
2 HR PEAK FLOW (GPM)	444	472	416	361	361	444	611
24 HR FLOW							

TIME COLLECTED	8:00	8:00	8:00	9:00	9:00	5:30	10:30
TIME READ	1000	1000	1000	1100	1100	700	1200
DO (mg/L)	7.7	7.6	7.9	8.8	7.7	8.0	7.8
SAMPLE TEMPERATURE	72.2	73.5	67.1	69.7	65.2	69.4	72.5
PH (S.U.)	7.2	7.2	7.2	7.2	7.2	7.4	7.2

CLARIF D.O. (mg/L) # / #	1	1	1	1	1	1	1
CLARIF D.O. (mg/L) # / #	1	1	1	1	1	1	1
CLARIF S.B.D. (FT.) # / #	1	1	1	1	1	1	1
CLARIF S.B.D. (FT.) # / #	2, 2	2, 2	2, 2	2, 2	1, 3	1, 3	3, 1

NET FLOW	.583	.726	.457	.674	.510	.435	.893
COPY FLOW METER	658928	659141	659356	659581	659771	659937	660231
COPY FLOW METER	658775	658928	659141	659356	659581	659771	659937
TOTAL FLOW	153	213	215	225	190	166	294
NH <sub>3</sub>	0.06	0.05	0.08	0.02	0.06	0.02	2.12
Kwhr	3226.1	3228.3	3230.4	3232.5	3234.5	3236.2	3238.9
DISTRICT RESIDUAL	.83	.92	.80	.89	.89	1.09	.99
VEGETATION #	1	1	1	1	1	1	1
Sampler Temp.	-0.6	4.8	4.4°	5.0°	4.6°	3.8°	7.9°
Gen. ETM.	615.7						

SUPERVISOR: \_\_\_\_\_

DATE: \_\_\_\_\_

\*\* COMPLETED FORM IS TO BE SUBMITTED TO REGULATORY WEEKLY \*\*



WASTEWATER TREATMENT PLANT REPORT

DISTRICT: PVAM

March  
MONTH / YEAR: April, 2017

OPR INITIALS / TIME	JJ, 800	JJ, 800	800, JJ	400, JJ	700, JJ	530, JJ	1030, JJ
DAY / DATE	MON / 27	TUES / 28	WED / 29	THUR / 30	FRI / 31	SAT / 1	SUN / 2
DEGREES (F)	71° Cloudy	71° Cloudy	Rain 64°	Sunny 58°	Sunny 64°	PARTLY 63°	Cloudy 75°
RAINFALL (INCHES)	0	0	.27	0.5	0	0	0.93
FLOW METER READING	25811035	25811573	25812094	25812608	25813049	25813481	25814143
FLOW METER READING	25810672	25811035	25811573	25812094	25812608	25813049	25813481
TOTAL FLOW (MGD)	343	538	521	514	441	432	662
FLOW MEASURED (IN./FT.)	8.0"	9.5"	7.5	8.5	8.0	8.5"	9.0"
2 HR PEAK FLOW (GPM)	444	472	416	361	361	444	611
24 HR FLOW							

TIME COLLECTED	8:00	8:00	8:00	4:00	9:00	5:30	10:30
TIME READ	1000	1000	1000	1100	1100	700	1200
DO (mg/L)	7.7	7.6	7.9	8.8	7.7	8.0	7.8
SAMPLE TEMPERATURE	72.2	73.5	67.1	69.7	65.2	69.4	72.5
PH (S.U.)	7.2	7.2	7.2	7.2	7.2	7.4	7.2

CLARIF D.O. (mg/L) # / #	1 /	1 /	1 /	1 /	1 /	1 /	1 /
CLARIF D.O. (mg/L) # / #	1 /	1 /	1 /	1 /	1 /	1 /	1 /
CLARIF S.B.D. (FT.) # / #	1 /	1 /	1 /	1 /	1 /	1 /	1 /
CLARIF S.B.D. (FT.) # / #	2, 2	2, 2	2, 2	3, 2	1, 3	1, 3	3, 1

INSTR. FLOW	.583	.726	.457	.674	.510	.435	.893
50PV FLOW METER	658928	659141	659356	659581	659771	659937	660231
20PV FLOW METER	658775	658928	659141	659356	659581	659771	659937
TOTAL FLOW	153	213	215	225	190	166	294
NH3	0.06	0.05	0.08	0.02	0.06	0.02	2.12
Kwhr	3226.1	3228.3	3230.4	3232.5	3234.5	3236.2	3238.9
DISTRICT RESIDUAL	.83	.92	.80	.89	.89	1.09	.99
IGRATION #	1	1	1	1	1	1	1
Sampler Temp.	-0.6	4.3	4.4°	5.0°	4.6°	3.8°	7.9°
Gen. ETM.	615.7						

SUPERVISOR: \_\_\_\_\_ DATE: \_\_\_\_\_

\*\* COMPLETED FORM IS TO BE SUBMITTED TO REGULATORY WEEKLY \*\*



WASTEWATER TREATMENT PLANT REPORT

DISTRICT: PVAM

MONTH / YEAR: Dec / Jan 2016 / 2017

OPR INITIALS / TIME	Mon, 8:00	Tue, 8:00	Wed, 9:00	Thu, 8:00	Fri, 8:00	Sat, 9:00	Sun, 8:00
DAY / DATE	MON / 26	TUES / 27	WED / 28	THUR / 29	FRI / 30	SAT / 31	SUN / 1
DEGREES (F)	cloudy 73°	Fog 68°	cloudy 72°	PK 61°	PK 46°	cloudy 57°	cloudy 65°
RAINFALL (INCHES)	.20"	0	0	0	0	0	.021"
FLOW METER READING	25764862	25765182	25765532	25765802	25766021	25766220	25766470
FLOW METER READING	25764536	25764862	25765182	25765532	25765802	25766021	25766220
TOTAL FLOW (MGD)	.326	.320	.350	.270	.219	.199	.250
FLOW MEASURED (IN./FT.)	5.7"	6.0"	6.3"	5.0"	4.6"	7.8"	5.4"
2 HR PEAK FLOW (GPM)	194	222	167	167	167	139	167
24 HR FLOW							

TIME COLLECTED	8:00	8:00	8:00	8:00	8:00	3:00	5:00
TIME READ	9:30	9:30	9:30	9:30	9:30	4:30	7:30
DO (mg/L)	8.3	8.3	8.3	8.4	8.6	9.0	8.6
SAMPLE TEMPERATURE	68.8	70.1	70.3	68.3	64.3	62.9	63.4
PH (S.U.)	7.4	7.4	7.4	7.4	7.4	7.4	7.4
CLARIF D.O. (mg/L) # / #	1 /	1 /	1 /	1 /	1 /	1 /	1 /
CLARIF D.O. (mg/L) # / #	1 /	1 /	1 /	1 /	1 /	1 /	1 /
CLARIF S.B.D. (FT.) # / #	1 /	1 /	1 /	1 /	1 /	1 /	1 /
CLARIF S.B.D. (FT.) # / #	2, 1	1, 2	3, 3	3, 3	3, 3	3, 3	3, 3

INST. FLOW	.234	.290	.331	.174	.127	.454	.203
SOPV FLOW METER	635574	635727	635879	636024	636164	636308	636480
SOPV FLOW METER	635429	635574	635727	635879	636024	636164	636308
TOTAL FLOW	.145	.153	.152	.145	.140	.144	.172
NH <sub>3</sub>	0.03	0.06	0.02	0.03	0.00	0.00	0.02
Kwhr	3046.9	3048.8	3050.6	3052.4	3054.1	3055.7	3057.6
DISTRICT RESIDUAL	0.70	0.69	0.69	0.73	0.66	0.68	0.68
VEGETATION #	1	1	1	1	1	1	1
Sampler Temp.	20.7°						
Gen ETM.	592.2						

SUPERVISOR: \_\_\_\_\_ DATE: \_\_\_\_\_

\*\* COMPLETED FORM IS TO BE SUBMITTED TO REGULATORY WEEKLY \*\*



WASTEWATER TREATMENT PLANT REPORT

DISTRICT: PVAM

MONTH / YEAR: Feb / 2017

OPR INITIALS / TIME	Mon, 9:00	Tue, 9:00	Wed, 8:00	Thur, 9:00	Fri, 8:30	Sat, 8:00	Sun, 7:00
DAY / DATE	MON / 13	TUES / 14	WED / 15	THUR / 16	FRI / 17	SAT / 18	SUN / 19
DEGREES (F)	cloudy 68°	RAIN 55°	cloudy 46°	sunny 39°	RAIN 54°	Cloudy 62°	Cloudy 75°
RAINFALL (INCHES)	Ø	1.0	Ø	Ø	Ø	2.4	Ø
FLOW METER READING	25789371	25789978	25790652	25791194	25791783	25792307	25792863
FLOW METER READING	25788845	25789371	25789978	25790652	25791194	25791783	25792307
TOTAL FLOW (MGD)	.526	.607	.674	.542	.589	.524	.556
FLOW MEASURED (IN./FT.)	9.0"	10.6"	9.8"	7.5"	8.6"	8.5"	8.5"
2 HR PEAK FLOW (GPM)	444	1000	555	472	555	416	444
24 HR FLOW	11"						
TIME COLLECTED	9:00	9:00	8:00	9:00	8:30	8:00	9:00
TIME READ	10:00	10:30	9:30	9:30	9:30	9:30	11:30
DO (mg/L)	7.8	7.8	8.3	2.50	8.3	7.9	8.2
SAMPLE TEMPERATURE	71.3	69.8	66.1	61.9	64.8	66.5	70.3
PH (S.U.)	7.2	7.2	7.3	7.2	7.2	7.2	7.2
CLARIF D.O. (mg/L) # / #	1 / 1	1 / 1	1 / 1	1 / 1	1 / 1	1 / 1	1 / 1
CLARIF D.O. (mg/L) # / #	1 / 1	1 / 1	1 / 1	1 / 1	1 / 1	1 / 1	1 / 1
CLARIF S.B.D. (FT.) # / #	1 / 1	1 / 1	1 / 1	1 / 1	1 / 1	1 / 1	1 / 1
CLARIF S.B.D. (FT.) # / #	2, 5	2, 4	4, 2	2, 4	4, 2	2, 4	4, 2
INLET FLOW	.784	1.277	.627	.396	.708	.657	.615
COPY FLOW METER	648644	648974	649239	649490	649717	649950	650287
COPY FLOW METER	648417	648644	648874	649239	649490	649717	649950
TOTAL FLOW	.227	.230	.365	.251	.227	.233	.257
NH <sub>3</sub>	0.04	0.00	0.02	0.02	0.00	0.08	0.05
Kwhr	3141.4	3143.5	3145.4	3147.4	3149.4	3151.3	3153.5
DISTRICT RESIDUAL	0.77	0.82	0.81	.92	0.79	.83	.80
IGRATION #	1	1	1	1	1	1	1
Sampler Temp.	6.9°	4.6°		3.4°		4.3°	6.1°
Gen. ETM.	608.5						

SUPERVISOR: \_\_\_\_\_

DATE: \_\_\_\_\_

\*\* COMPLETED FORM IS TO BE SUBMITTED TO REGULATORY WEEKLY \*\*

13845  
P.B.C.



WASTEWATER TREATMENT PLANT REPORT

DISTRICT: PVAM

MONTH / YEAR: Feb / 2017

OPR INITIALS / TIME	MON / 6	TUES / 7	WED / 8	THUR / 9	FRI / 10	SAT / 11	SUN / 12
DAY / DATE	MON / 6	TUES / 7	WED / 8	THUR / 9	FRI / 10	SAT / 11	SUN / 12
DEGREES (F)	cloudy 66°	cloudy 70°	cloudy 68°	rainy 46°	cloudy 49°	cloudy 70°	cloudy 70°
RAINFALL (INCHES)	0	0	0	0	0	0	0
FLOW METER READING	25785931	25786475	25786936	25787450	25787958	25788427	25788945
FLOW METER READING	25785376	25785831	25786475	25786936	25787450	25787958	25788427
TOTAL FLOW (MGD)	.455	.644	.461	.514	.508	.469	.418
FLOW MEASURED (IN./FT.)	7.0"	8.5"	8.4"	8.0	6.7"	7.1"	6.0"
2 HR PEAK FLOW (GPM)	500	500	528	500	472	444	444
24 HR FLOW							
TIME COLLECTED	8:00	8:00	8:00	8:00	8:00	7:00	6:00
TIME READ	9:00	9:30	9:30	9:30	9:30	8:30	7:30
DO (mg/L)	8.2	8.0	7.8	8.1	8.2	7.9	7.8
SAMPLE TEMPERATURE	67.3	71.8	70.5	67.4	66.1	68.3	70.2
PH (S.U.)	7.3	7.4	7.3	7.2	7.2	7.2	7.3
CLARIF D.O. (mg/L) # / #	1 /	1 /	1 /	1 /	1 /	1 /	1 /
CLARIF D.O. (mg/L) # / #	1 /	1 /	1 /	1 /	1 /	1 /	1 /
CLARIF S.B.D. (FT.) # / #	1 /	1 /	1 /	1 /	1 /	1 /	1 /
CLARIF S.B.D. (FT.) # / #	2, 4	3, 4	4, 2	2, 4	4, 2	2, 4	4, 2
INST. FLOW	.415	.618	.630	.473	.363	.433	.295
50PY FLOW METER	647153	647379	647579	647812	648032	648223	648417
30PY FLOW METER	646987	647153	647379	647579	647812	648032	648223
TOTAL FLOW	.166	.226	.200	.233	.220	.191	.194
NH3	0.01	0.00	0.00	0.04	0.04	0.03	0.04
Kwhr	3127.4	3129.6	3131.6	3133.6	3135.5	3137.5	3139.3
DISTRICT RESIDUAL	0.84	0.88	0.85	0.78	0.80	0.85	
OPERATION #	1	1	1	1	1	1	1
Sampler Temp.							
Gen. ETM.							

IPERVISOR: \_\_\_\_\_

DATE: \_\_\_\_\_

\*\* COMPLETED FORM IS TO BE SUBMITTED TO REGULATORY WEEKLY \*\*



WASTEWATER TREATMENT PLANT REPORT

DISTRICT: PVAM

MONTH / YEAR: Feb / 2017

OPR INITIALS / TIME	JJ, 700	JJ, 800	JJ, 800	JJ, 800	JJ, 900	1	1
DAY / DATE	MON / 20	TUES / 21	WED / 22	THUR / 23	FRI / 24	SAT / 25	SUN / 26
DEGREES (F)	RAIN 59°	Cloudy 58°	sunny 53°	Partly Cloudy 61°	Cloudy 70°	46	53
RAINFALL (INCHES)	1.20"	2.0"	0	0	0	0	0
FLOW METER READING	25793577	25794614	25795464	25796128	25796771	25797269	25797693
FLOW METER READING	25792803	25793577	25794614	25795464	25796128	25796771	25797269
TOTAL FLOW (MGD)	714	1.037	850	664	643	498	424
FLOW MEASURED (IN./FT.)	11.0	10.0	9.5	9.0	8.5	8.5	8.5
2 HR PEAK FLOW (GPM)	972	722	555	527	500	389	444
24 HR FLOW							
TIME COLLECTED	7:00	8:00	8:00	9:00	9:00	0945	0910
TIME READ	8:30	10:30	10:00	10:30	10:30	1045	1010
DO (mg/L)	7.99	7.9	7.8	7.8	8.4	8.5	8.9
SAMPLE TEMPERATURE	70.1	68.4	67.6	68.5	69.7	69.5	64.8
PH (S.U.)	7.2	7.2	7.2	7.2	7.5	7.3	7.4
CLARIF D.O. (mg/L) # / #	1 /	1 /	1 /	1 /	1 /	1 /	1 /
CLARIF D.O. (mg/L) # / #	1 /	1 /	1 /	1 /	1 /	1 /	1 /
CLARIF S.B.D. (FT.) # / #	1 /	1 /	1 /	1 /	1 /	1 /	1 /
CLARIF S.B.D. (FT.) # / #	4, 2	2, 4	4, 2	2, 4	4, 2	4, 2	2, 4
INSTR. FLOW	1.465	1.059	0.759	0.727	0.677	.648	.577
50PY FLOW METER	650495	651163	651714	652062	652364	652613	652811
50PY FLOW METER	650207	650495	651163	651714	652062	652364	652613
TOTAL FLOW	278	678	551	348	302	249	197
NH <sub>3</sub>	0.80	0.04	0.06	0.03	0.05		
Kwhr	3155.3	3157.6	3159.7	3161.8	3163.9	3166.0	3168.0
DISTRICT RESIDUAL	80	80	79	79	78	77	74
GENERATION #	1	1	1	1	1	1	1
Sampler Temp.	3.3°	3.0°	4.5°	2.9°		2.6	2.3
Gen. ETM.	609.7						
	1	1	1	1	1	1	1

SUPERVISOR: \_\_\_\_\_

DATE: \_\_\_\_\_

\*\* COMPLETED FORM IS TO BE SUBMITTED TO REGULATORY WEEKLY \*\*



WASTEWATER TREATMENT PLANT REPORT

DISTRICT: PVAM

MONTH / YEAR: Feb/MAR 2017

OPR INITIALS / TIME	H, 7:00	H, 8:00	H, 7:00	H, 7:00	H, 6:00	JJ, 12:00	700, JJ
DAY / DATE	MON, 27	TUES, 28	WED, 1	THUR, 2	FRI, 3	SAT, 4	SUN, 5
DEGREES (F)	cloudy 68°	cloudy 77°	cloudy 72°	sunny 45°	clear 45°	RAIN 62°	RAIN 64°
RAINFALL (INCHES)	0	0	0	0	0	0.7	2.7
FLOW METER READING	25798168	25798829	25799329	25799859	25800366	25800874	25801191
FLOW METER READING	25797693	25798168	25798829	25799329	25799859	25800366	25800874
TOTAL FLOW (MGD)	.475	.661	.560	.530	.507	.509	.306
FLOW MEASURED (IN./FT.)	7.0"	9.0"	9.1"	6.0"	5.5"	9.0"	8.5"
2 HR PEAK FLOW (GPM)	472	472	556	472	444	277	389
24 HR FLOW							

TIME COLLECTED	7:00	9:00	7:00	7:00	6:00	12:00	7:00
TIME READ	8:30	10:30	8:30	8:30	7:30	13:30	12:00
DO (mg/L)	7.9	8.1	7.6	7.9	8.4	8.5	8.1
SAMPLE TEMPERATURE	67.9	72.5	72.9	68.7	65.4	65.4	65.9
PH (S.U.)	7.3	7.4	7.3	7.3	7.3	7.4	7.3

CLARIF D.O. (mg/L) # / #	1	1	1	1	1	1	1
CLARIF D.O. (mg/L) # / #	1	1	1	1	1	1	1
CLARIF S.B.D. (FT.) # / #	1	1	1	1	1	1	1
CLARIF S.B.D. (FT.) # / #	4, 2	2, 4	4, 2	2, 4	4, 2	2, 4	4, 2

INST. Flow	.409	.785	.392	.256	.225	0.710	0.595
50PV FLOW METER	652995	653222	653404	653597	653811	654074	654227
20PV FLOW METER	652811	652995	653222	653404	653597	653811	654074
TOTAL FLOW	.184	.227	.182	.193	.214	.263	.153
NH <sub>3</sub>	0.02	0.06	0.09	0.11	0.03	0.00	0.04
Kwhr	3169.8	3172.2	3174.1	3176.1	3178.0	3180.6	3182.2
DISTRICT RESIDUAL	0.89	0.76	0.88	0.87	0.74	0.84	.80
AGRATION #	1	1	1	1	1	1	1
Sampler Temp.	0.2°	6.2°	1.9°				
Gen ETM.	610.9					0.1°	4.2°

SUPERVISOR: \_\_\_\_\_

DATE: \_\_\_\_\_

\*\* COMPLETED FORM IS TO BE SUBMITTED TO REGULATORY WEEKLY \*\*



WASTEWATER TREATMENT PLANT REPORT

DISTRICT: PVAM

MONTH / YEAR: APRIL / 2017

OPR INITIALS / TIME	H, 6:00	H, 6:00	H, 7:00	H, 7:00	H, 7:00	M, 11:00	M, 11:00
DAY / DATE	MON / 3	TUES / 4	WED / 5	THUR / 6	FRI / 7	SAT / 8	SUN / 9
DEGREES (F)	clear 55°	Fog 61°	sunny 55°	clear 46°	clear 50°	71	72
RAINFALL (INCHES)	0.10'	0	0	0	0	0	0
FLOW METER READING	25814658	25815192	25815752	25816289	25816838	25817427	25817934
FLOW METER READING	25814143	25814658	25815192	25815752	25816289	25816838	25817431
TOTAL FLOW (MGD)	.515	.534	.560	.537	.549	.599	.497
FLOW MEASURED (IN./FT.)	6.2"	6.3"	9.3"	7.1"	8.2"	8.3	8.0
2 HR PEAK FLOW (GPM)	500	500	472	444			472
24 HR FLOW							
---:---							
TIME COLLECTED	6:00	6:00	7:00	7:00	7:00	11:00	12:00
TIME READ	7:30	7:30	8:30	8:30	8:30	12:00	13:00
DO (mg/L)	7.9	8.2	7.9	8.1	8.3	8.3	8.0
SAMPLE TEMPERATURE	70.5	70.1	70.4	68.3	68.4	71.0	73.0
PH (S.U.)	7.2	7.3	7.3	7.3	7.4	7.5	7.5
CLARIF D.O. (mg/L) # / #	1 /	1 /	1 /	1 /	1 /	1 /	1 /
CLARIF D.O. (mg/L) # / #	1 /	1 /	1 /	1 /	1 /	1 /	1 /
CLARIF S.B.D. (FT.) # / #	1 /	1 /	1 /	1 /	1 /	1 /	1 /
CLARIF S.B.D. (FT.) # / #	3, 1	1, 3	2, 2	2, 2	2, 2	1, 5	5, 1
---:---							
Inst Flow	.302	.304	.436	.422	.620	.653	.854
50PV FLOW METER	660549	660820	661079	661307	661530	661774	661997
20PV FLOW METER	660231	660549	660820	661079	661307	661350	661774
TOTAL FLOW	.318	.271	.259	.228	.223	.244	.223
NH <sub>3</sub>	0.42	0.00	0.06	0.08	0.00	0.00	0.01
Kwhr	3240.6	3242.8	3245.2	3247.3	3249.5	3252.1	3254.4
DISTRICT RESIDUAL	0.75	0.78	0.78	0.89	0.86	0.84	0.82
AGRATION #	1	1	1	1	1	1	1
Sampler Temp.	5.1°						
Gen ETM.	617.1						
	1	1	1	1	1	1	1

SUPERVISOR: \_\_\_\_\_

DATE: \_\_\_\_\_

\*\* COMPLETED FORM IS TO BE SUBMITTED TO REGULATORY WEEKLY \*\*



## **Existing Sanitary Sewer Waste Water System**









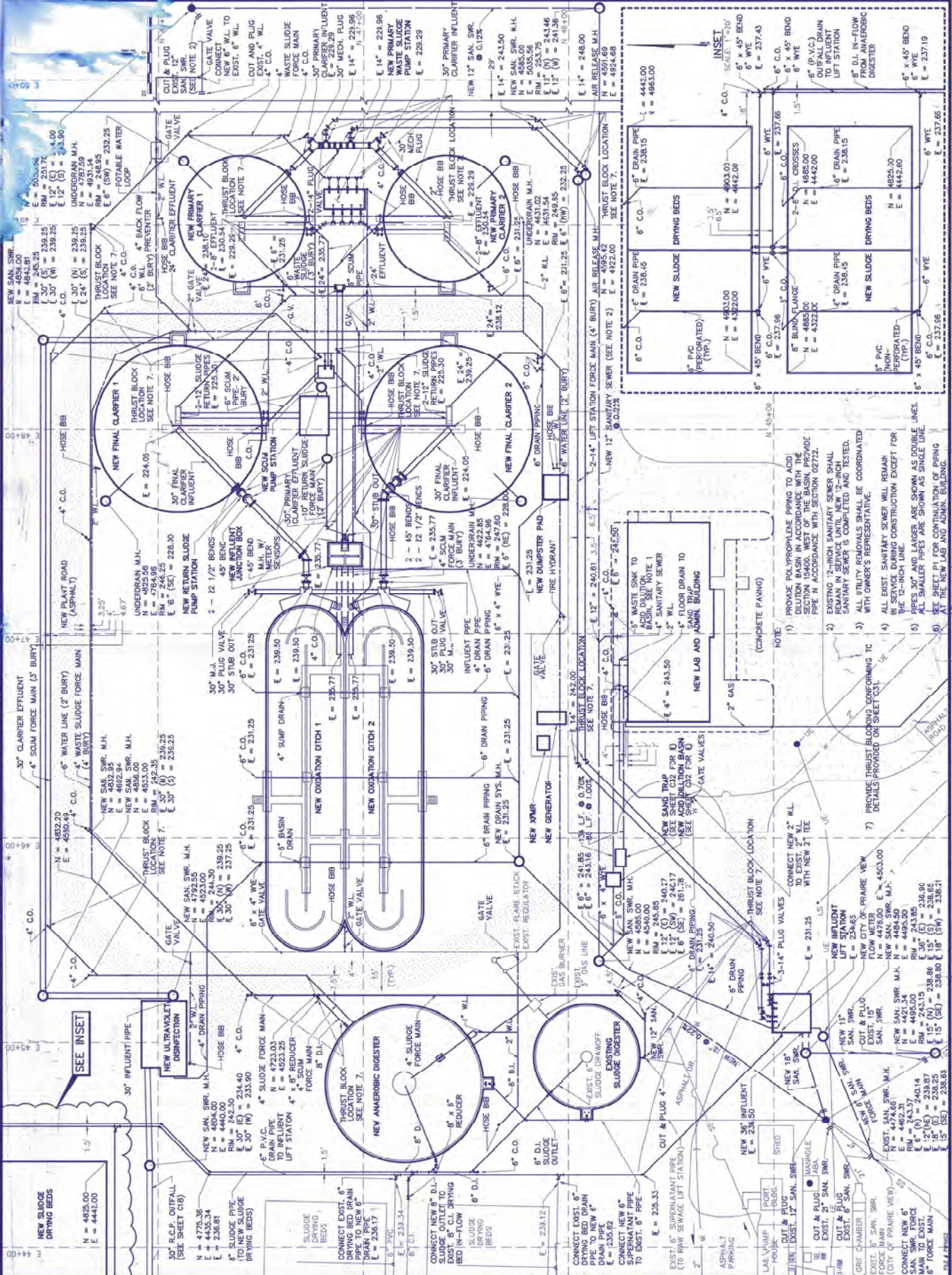
BENCHMARK: T.B.M. #1 SEE SHEET S22 BOX LOCATED AT N.E. CORNER OF GENERAL OFFICE AND CLASSROOM BLDG. CLASSROOM BLDG. ELEV. = 264.01

DATE	BY	APP'D
FEB		
JUNE 1992		

SCALE: 1" = 20'

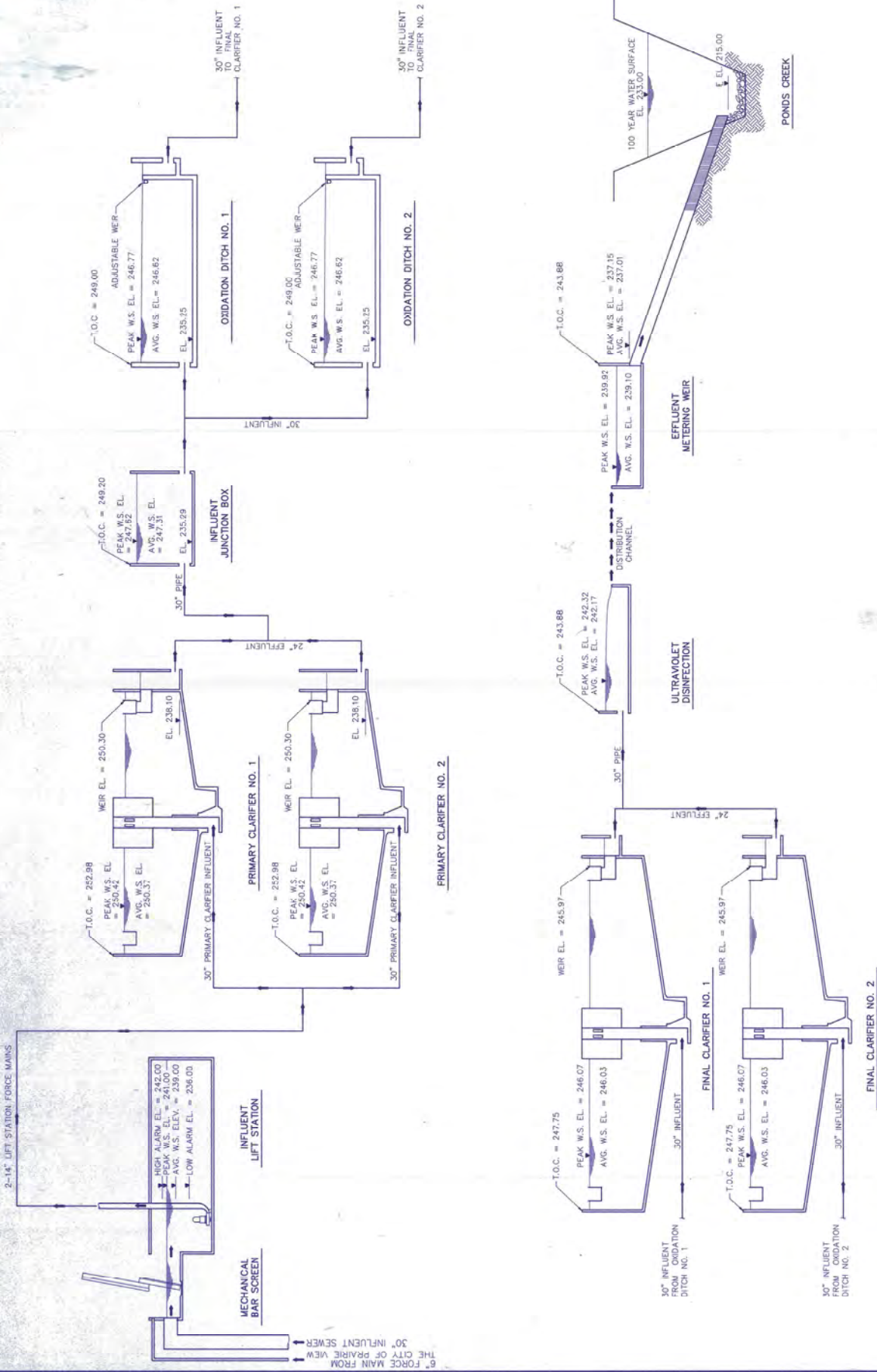
150-61

C17



- NOTE:
- 1) PROVIDE POLYPROPYLENE PIPING TO ACID SECTION 19400. WEST OF THE BASIN. PROVIDE PIPE IN ACCORDANCE WITH SECTION 02772.
  - 2) EXISTING 12-INCH SANITARY SEWER SHALL REMAIN IN SERVICE UNTIL NEW 12-INCH SANITARY SEWER IS COMPLETED AND TESTED.
  - 3) ALL UTILITY REMOVALS SHALL BE COORDINATED WITH OWNER'S REPRESENTATIVE.
  - 4) ALL EXIST. SANITARY SEWER WILL REMAIN IN SERVICE DURING CONSTRUCTION EXCEPT FOR THE 12-INCH LINE.
  - 5) PIPES 30" AND LARGER ARE SHOWN AS DOUBLE LINES. ALL SMALLER PIPES ARE SHOWN AS SINGLE LINE.
  - 6) SEE SHEET P1 FOR CONTINUATION OF PIPING AT THE NEW LAB AND ADMIN. BUILDING.
  - 7) PROVIDE THRUST BLOCKING CONFORMING TO DETAILS PROVIDED ON SHEET C01.







RD-1	30 HP
RD-2	30 HP
RD-3	30 HP
RD-4	30 HP
RD-5	30 HP
RD-6	30 HP

FC-1	3/4 HP
FC-2	3/4 HP

BUVD-1	5 HP
BUVD-2	5 HP

SP-1	180 GPM
SP-2	180 GPM

LSP-1	460-2240 GPM
LSP-2	460-2240 GPM
LSP-3	460-2240 GPM
LSP-4	460-2240 GPM

VFC-1	14 HP
VFC-2	14 HP
VFC-3	14 HP
VFC-4	14 HP

ME-1	14 HP
ME-2	14 HP
ME-3	14 HP
ME-4	14 HP

TE-1	7.5 HP
TE-2	7.5 HP
TE-3	7.5 HP
TE-4	7.5 HP

PSH-1	240 GPM
PSH-2	240 GPM
PSH-3	240 GPM
PSH-4	240 GPM

PS-1	1.5 HP
------	--------

BD-1	1.5 HP
------	--------

\* REMOTES BY MANUFACTURE OF BAR SCREEN

FLOW FROM CITY OF PRAIRIE VIEW

FLOW PLANT INFLUENT

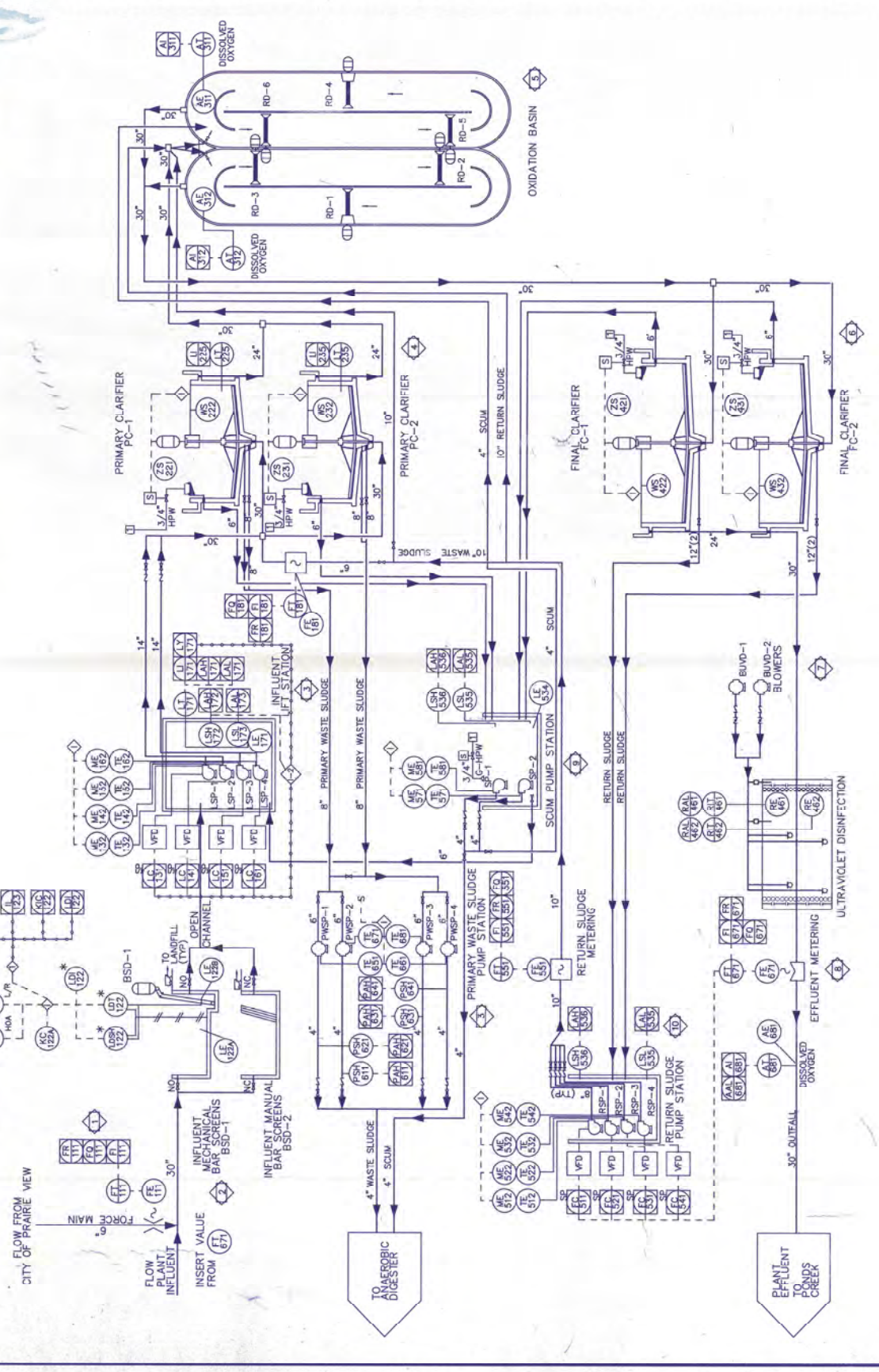
INFLUENT MECHANICAL BAR SCREENS BSD-1

INFLUENT MANUAL BAR SCREENS BSD-2

TO ANAEROBIC DIGESTER

TO AEROBIC TREATMENT PLANT

EFFLUENT TO PRAIRIE CREEK



THE TEXAS A&M UNIVERSITY SYSTEM

WASTEWATER TREATMENT PLANT AND COLLECTION SYSTEM UPGRADE PRAIRIE VIEW A&M UNIVERSITY PRAIRIE VIEW, TX. PROJ. NO. 4-2698

KLOTZ ASSOCIATES, INC. CONSULTING ENGINEERS



TEC  
Trevino Engineering Consultants, Inc.  
180-01  
G.G. K.O.  
NONE  
JULY 1992  
C13





Owner	T. F. TEXAS A&M UNIVERSITY SYSTEM
Contract No.	160-01
Scale	G.G.
Date	JULY 1992
Sheet	C14

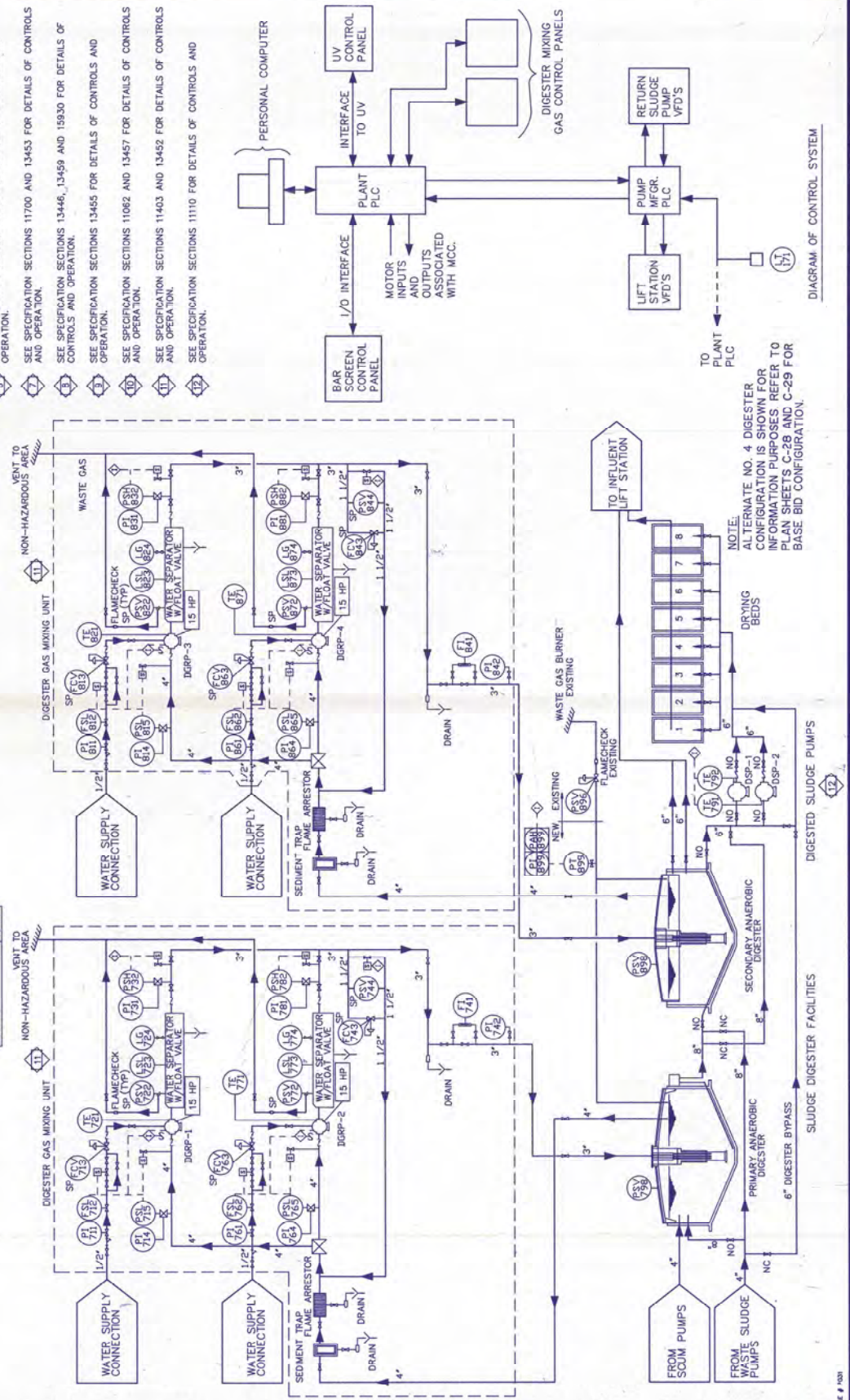
- REFERENCE NOTES:**
- 1. SEE SPECIFICATION SECTIONS 13446, 13459 AND 15930 FOR DETAILS OF CONTROLS AND OPERATION.
  - 2. SEE SPECIFICATION SECTIONS 11072 AND 13451 FOR DETAILS OF CONTROLS AND OPERATION.
  - 3. SEE SPECIFICATION SECTIONS 11062 AND 13457 FOR DETAILS OF CONTROLS AND OPERATION.
  - 4. SEE SPECIFICATION SECTIONS 13454 FOR DETAILS OF CONTROLS AND OPERATION.
  - 5. SEE SPECIFICATION SECTIONS 13456 FOR DETAILS OF CONTROLS AND OPERATION.
  - 6. SEE SPECIFICATION SECTIONS 13456 FOR DETAILS OF CONTROLS AND OPERATION.
  - 7. SEE SPECIFICATION SECTIONS 11700 AND 13453 FOR DETAILS OF CONTROLS AND OPERATION.
  - 8. SEE SPECIFICATION SECTIONS 13446, 13459 AND 15930 FOR DETAILS OF CONTROLS AND OPERATION.
  - 9. SEE SPECIFICATION SECTIONS 13455 FOR DETAILS OF CONTROLS AND OPERATION.
  - 10. SEE SPECIFICATION SECTIONS 11062 AND 13457 FOR DETAILS OF CONTROLS AND OPERATION.
  - 11. SEE SPECIFICATION SECTIONS 11403 AND 13452 FOR DETAILS OF CONTROLS AND OPERATION.
  - 12. SEE SPECIFICATION SECTIONS 11110 FOR DETAILS OF CONTROLS AND OPERATION.

- 5. ALL PUMPS, COMPRESSORS, AND BLOWERS SHALL ALTERNATE AND SHALL BE STARTED PER LEAD FOLLOW LOGIC, FIRST ON FIRST OFF BASIS. IF ANY MOTOR FAILS, THE OTHER MOTOR SHALL BE ALARM INDICATED.
- 6. WHEN LOAD TRANSFERS TO THE GENERATOR ALL MOTORS SHALL BE INTERLOCKED AND THE STANDBY MOTORS SHALL NOT START. THIS IS TO ENSURE SO THE GENERATOR MAY NOT GET OVERLOADED.
- 7. INSTALL AS DETAILED AND DESCRIBED IN THE SPECIFICATIONS, AND PER MANUFACTURER RECOMMENDATIONS. SUBMIT FOR REVIEW.

DSP-1	1 250 GPM	5 HP
DSP-2	2 250 GPM	5 HP

DGRP-1	1 15 HP
DGRP-2	1 15 HP
DGRP-3	1 15 HP
DGRP-4	1 15 HP

- GENERAL NOTES:**
- 1. ALL SETTINGS AND TIME DELAYS SHALL BE ADJUSTABLE. PROGRAMMING SHALL INCLUDE EASE OF ADJUSTMENT.
  - 2. THE SYSTEM SHALL BE DESIGNED TO WITHSTAND SURGES DUE TO POWER FAILURE.
  - 3. INSTALL AND WIRE ALL INSTRUMENTS PER INSTRUMENT MANUFACTURER RECOMMENDATIONS.
  - 4. INSTALL INDIVIDUAL INSTRUMENT CONTROL PANELS ON STEEL PEDESTALS, WITH FOOTINGS SET IN 3000 PSI CONCRETE.



NOTE:  
ALTERNATE NO. 4 DIGESTER CONFIGURATION IS SHOWN FOR INFORMATION PURPOSES. REFER TO PLAN SHEETS C-28 AND C-29 FOR BASE BID CONFIGURATION.



## Existing Gas Utility Maps



# Main Campus Area Gas

— GAS LINES SUPPLIED BY WALLER, TEXAS

— GAS LINES SUPPLIED BY SOUTH EASTERN GAS CO. (MAIN LINES)

— GAS LINES OWNED BY PRAIRIE VIEW A&M UNIV.

— PROP. GAS LINES

— PORTIONS OF EXISTING GAS LINES TO BE REMOVED

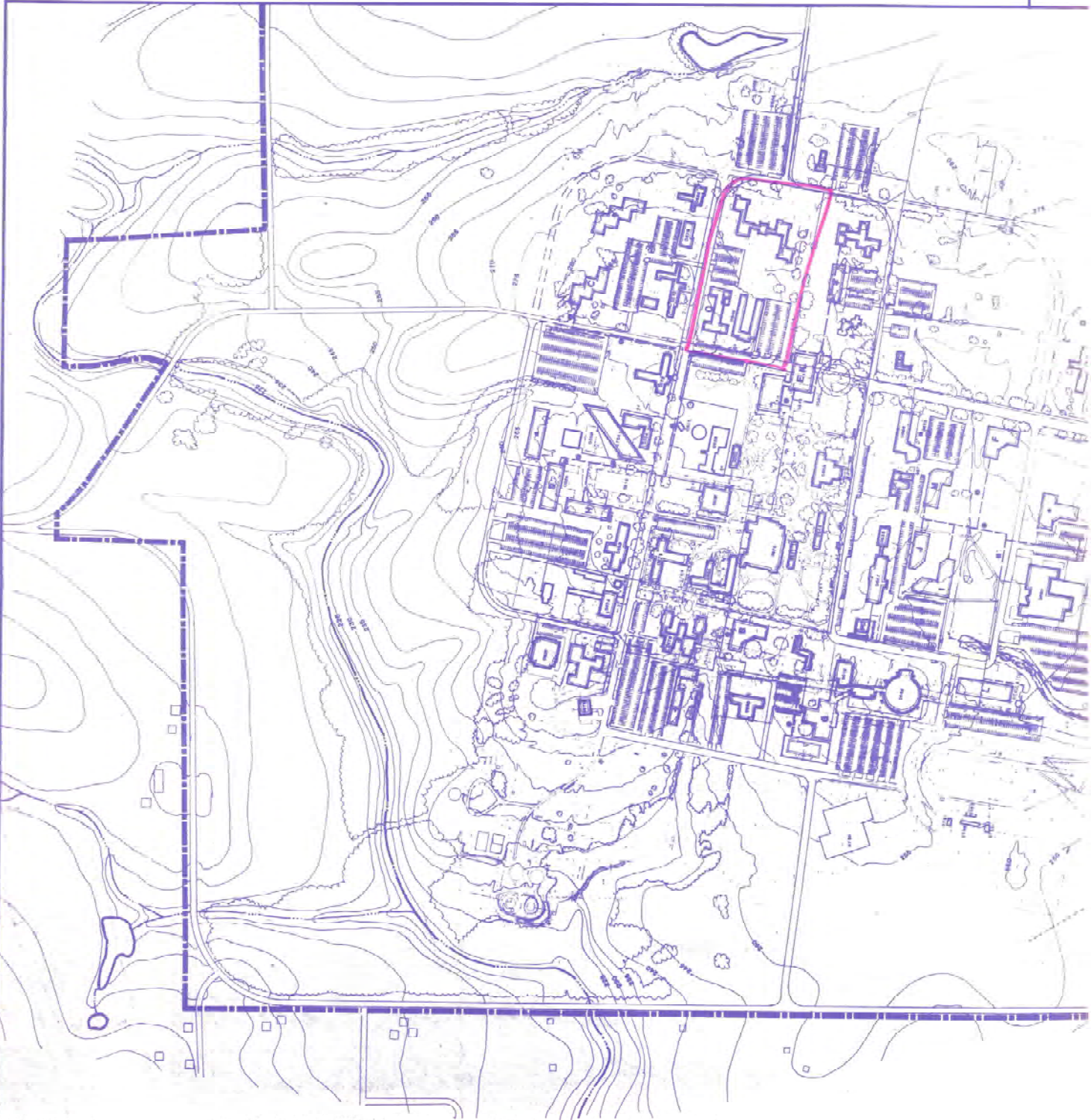
• PHASE 1 CONSTRUCTION

### Existing Buildings

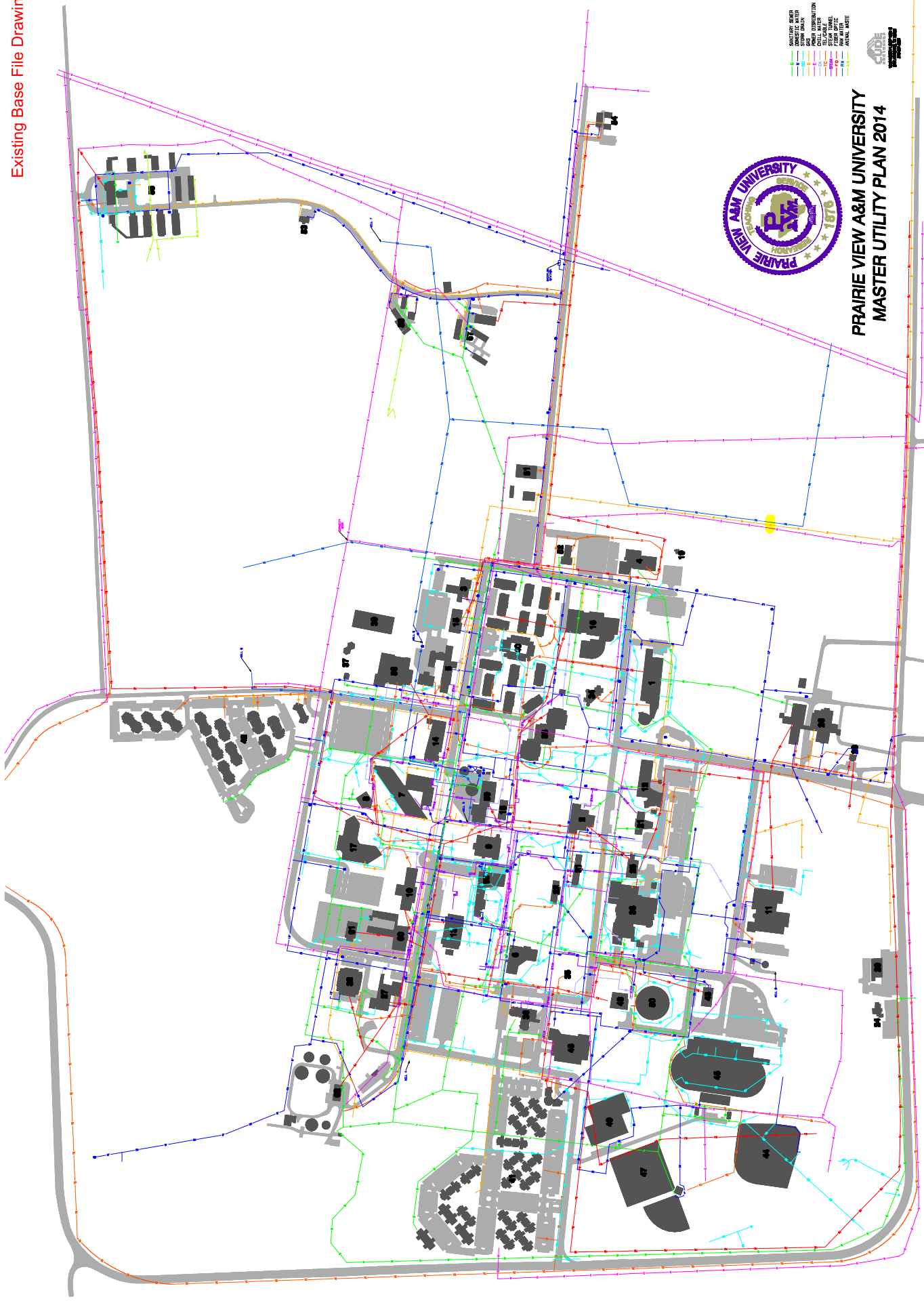
- 1001 ADMINISTRATIVE BUILDING
- 1002 ARTS CENTER
- 1003 ACADEMIC BUILDING
- 1004 BUSINESS CENTER
- 1005 CHEMISTRY BUILDING
- 1006 CIVIL ENGINEERING BUILDING
- 1007 COMMUNITY CENTER
- 1008 COMPUTER CENTER
- 1009 ELECTRICAL ENGINEERING BUILDING
- 1010 ENVIRONMENTAL ENGINEERING BUILDING
- 1011 FOOD SERVICE BUILDING
- 1012 HEALTH SERVICES CENTER
- 1013 HUMANITIES BUILDING
- 1014 INFORMATION CENTER
- 1015 JOURNALISM BUILDING
- 1016 LIBRARY BUILDING
- 1017 MECHANICAL ENGINEERING BUILDING
- 1018 METALLURGY BUILDING
- 1019 NURSING BUILDING
- 1020 PHYSICS BUILDING
- 1021 PLANT SCIENCE BUILDING
- 1022 POLITICAL SCIENCE BUILDING
- 1023 PSYCHOLOGY BUILDING
- 1024 RECREATION CENTER
- 1025 ROTARY CENTER
- 1026 SOCIAL SCIENCE BUILDING
- 1027 STUDENT UNION
- 1028 THEATRE BUILDING
- 1029 TRAINER BUILDING
- 1030 VISUAL ARTS BUILDING
- 1031 WATER RESOURCES CENTER
- 1032 WOODWORKS CENTER
- 1033 ZOO BUILDING
- 1034 ZOO VETERINARY BUILDING
- 1035 ZOO RESEARCH BUILDING
- 1036 ZOO EDUCATION BUILDING
- 1037 ZOO SUPPORT BUILDING
- 1038 ZOO QUARTERS BUILDING
- 1039 ZOO OFFICE BUILDING
- 1040 ZOO STORAGE BUILDING
- 1041 ZOO WAREHOUSE BUILDING
- 1042 ZOO INCUBATOR BUILDING
- 1043 ZOO HATCHERY BUILDING
- 1044 ZOO RESEARCH BUILDING
- 1045 ZOO RESEARCH BUILDING
- 1046 ZOO RESEARCH BUILDING
- 1047 ZOO RESEARCH BUILDING
- 1048 ZOO RESEARCH BUILDING
- 1049 ZOO RESEARCH BUILDING
- 1050 ZOO RESEARCH BUILDING

Proposed Building Sites  
A-P

• Beyond Year 2000







**PRAIRIE VIEW A&M UNIVERSITY  
MASTER UTILITY PLAN 2014**

- WATER
- SEWER
- GAS
- ELECTRIC
- STORMWATER
- FIBER OPTIC
- OTHER SERVICES

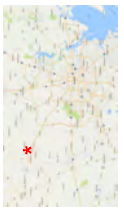




## Proposed Gas Utility Maps



14 13 12 11 10 9 8 7 6 5 4 3 2 1



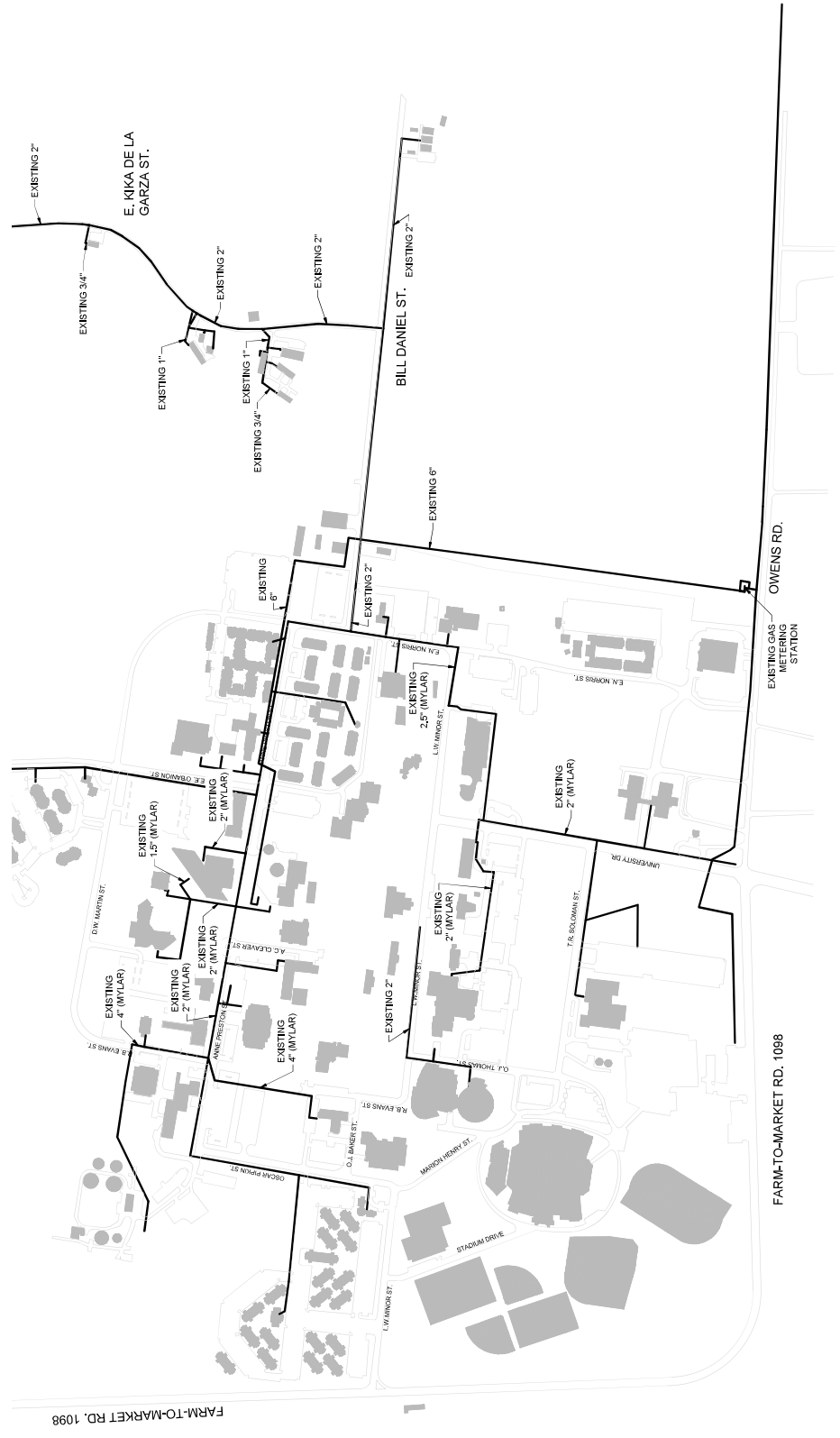
**SITE LOCATION**  
 PRAIRIE VIEW A&M UNIVERSITY  
 100 ENERGY WAY, SUITE 1500  
 PRAIRIE VIEW, TX 77466

**BURNS & MCDONNELL**  
 100 ENERGY WAY, SUITE 1500  
 PRAIRIE VIEW, TX 77466  
 TEL: 281-237-4281  
 FAX: 281-237-4281

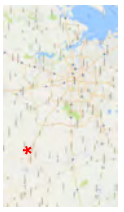
# PRAIRIE VIEW A&M UNIVERSITY



DATE	08/15/17	DESIGNED	TSV
DESIGNED	KAJ	CHECKED	-
PROJECT			
2017 UTILITY MASTER PLAN			
EXISTING GAS			
GAS UTILITY			
DRAWING	98470	REV.	-
<b>SK-100</b>			



**LEGEND:**  
 ——— EXISTING GAS



**SITE LOCATION**  
 PRAIRIE VIEW A&M UNIVERSITY  
 FARM-TO-MARKET RD.  
 PRAIRIE VIEW, TX 77466



date	08/15/17	designed	TSV
		checked	KAJ
<b>2017 UTILITY MASTER PLAN</b>			
<b>PROPOSED GAS UTILITY EXPANSION</b>			
project	98470		
drawing	SK-101		
rev.	-		

14 13 12 11 10 9 8 7 6 5 4 3 2 1



- LEGEND:**
- PHASE 1 - 2018-2023 (1.5 YR)
  - F1 - POLICE STATION (10,000 gsf)
  - F2 - MEAT PROCESSING FACILITY (20,000 gsf)
  - F3 - ICCE FACILITY (20,000 gsf)
  - F4 - ROTC BUILDING (10,000 gsf)
  - F5 - CULTURAL ARTS CENTER (21,000 gsf)
  - F6 - HOUSING 2 (from 2011 MP) (110,000 gsf)



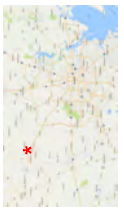
- NOTES:**
- EXISTING GAS UTILITY PIPE SIZES HAVE BEEN ASSUMED BASED ON EXISTING BASE FILE AND IUTLAR DATA.
  - PLAN VIEW IDENTIFIES PROPOSED MAIN LINE GAS SIZE AND TABLE BELOW IDENTIFIES PROPOSED LEAD-IN GAS LINE SIZES TO THE PROPOSED BUILDINGS. FUTURE CALCULATIONS AND DISCUSSIONS WILL BE REQUIRED TO ENSURE ALL PROPOSED GAS UTILITY EXPANSION PROJECTS WILL MEET THE DEMAND OF FUTURE FACILITIES AT THE TIME OF INSTALLATION.

Phase	Key	Building	Proposed Building Loads (MBH)	Proposed Pipe Size (inch)*
1	F1	Police Station	220	1-1/4"
1	F2	Meat Processing Facility	1690	3"
1	F3	ICCE Facility (lab)	570	2"
1	F4	ROTC Building (office)	290	1-1/2"
1	F5	Cultural Arts Center	250	2"
1	F6	Housing 2 (from 2011 Campus M)	450	2-1/2"
			2330	4"

\*Assumes steel pipe and pressure under 2psi



1 2 3 4 5 6 7 8 9 10 11 12 13 14



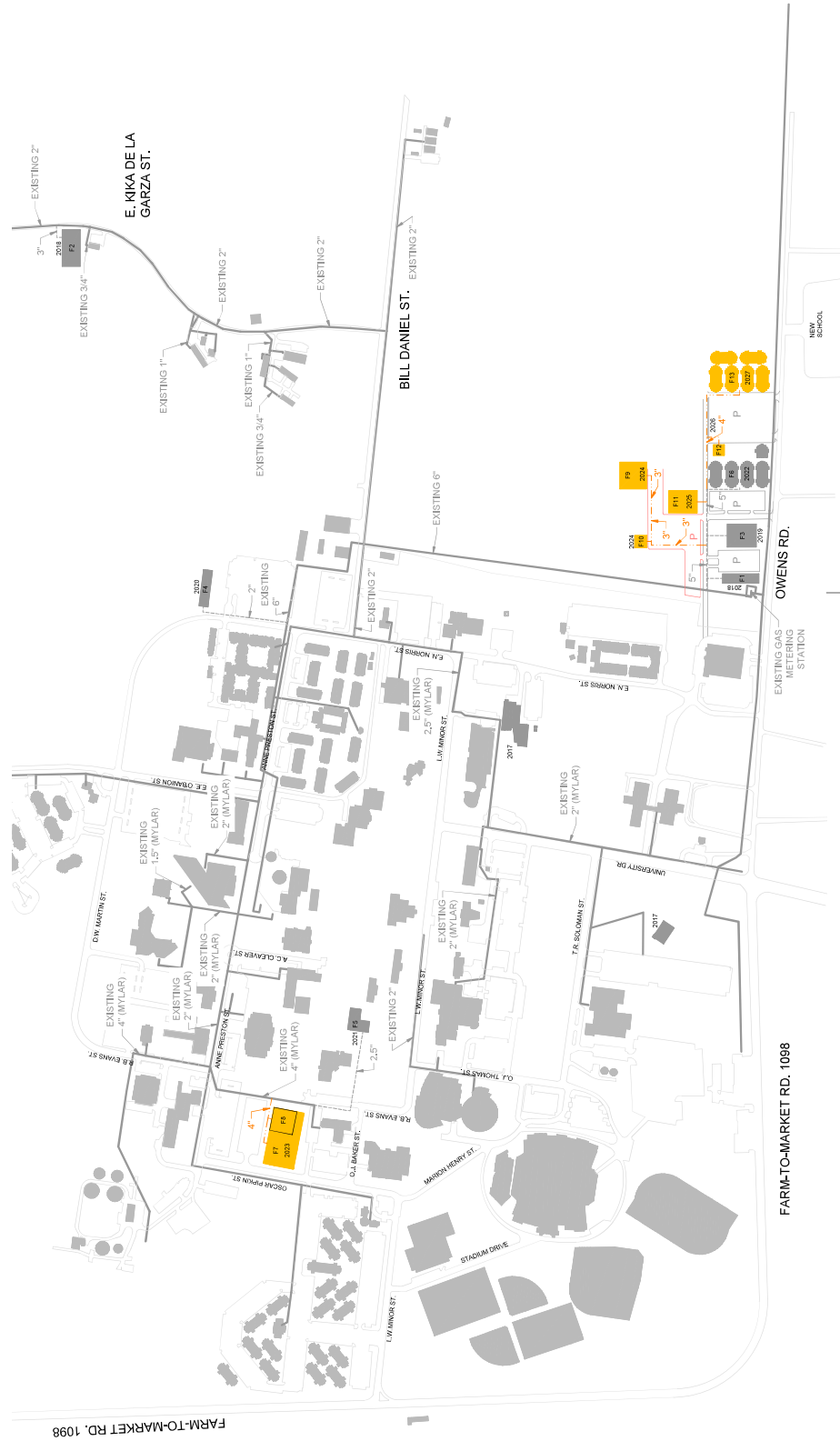
**SITE LOCATION**  
 PRAIRIE VIEW A&M UNIVERSITY  
 100 ENERGY WAY, SUITE 1500  
 FORT WORTH, TEXAS 76102  
 PRAIRIE VIEW, TX 77466



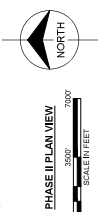
# PRAIRIE VIEW A&M UNIVERSITY



date	08/15/17	designed	TSV
checked		checked	
designed	KAJ	checked	
<b>2017 UTILITY MASTER PLAN</b>			
<b>PROPOSED GAS UTILITY EXPANSION</b>			
project	58470	drawing	SK-102
rev.			



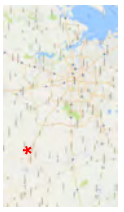
- LEGEND:**
- PHASE 1: 2018-2023 (1.5V):
    - F1 - POLICE STATION (10,000 gsf)
    - F2 - MEAT PROCESSING FACILITY (20,000 gsf)
    - F3 - ICCF FACILITY (20,000 gsf)
    - F4 - ROTC BUILDING (10,000 gsf)
    - F5 - CULTURAL ARTS CENTER (21,000 gsf)
    - F6 - HOUSING 2 (from 2011 MP) (110,000 gsf)
  - PHASE 2: 2023-2027 (6-10V):
    - F7 - FUTURE ACADEMIC BUILDING (105,080 gsf)
    - F8 - FUTURE LABORATORY BUILDING (105,080 gsf)
    - F9 - FUTURE SUPPORT BUILDING (21,450 gsf)
    - F10 - FUTURE OFFICE (4,480 gsf)
    - F11 - FUTURE STUD. ACTIVITIES BUILDING (18,880 gsf)
    - F12 - FUTURE RETAIL OFFICE BUILDING (3,450 gsf)
    - F13 - FUTURE HOUSING BUILDING (137,560 gsf)
- EXISTING GAS: ———  
 PHASE I GAS: - - - - -  
 PHASE II GAS: - - - - -



- NOTES:**
- EXISTING GAS UTILITY PIPE SIZES HAVE BEEN ASSUMED BASED ON EXISTING BASE FILE AND INPLAN DATA.
  - PLAN VIEW IDENTIFIES PROPOSED MAIN LINE GAS SIZE AND TABLE BELOW IDENTIFIES PROPOSED LEAD-IN GAS LINE SIZES TO THE PROPOSED BUILDINGS. PRESSURES MEET THE DEMAND OF FUTURE FACILITIES AT THE TIME OF INSTALLATION.

Phase	Key	Building	Proposed Building Loads (MBH)	Pipe Size (inch)*
2	F7	Future Academic Building	2100	4"
2	F8	Future Lab Space / Building	2060	3"
2	F9	Future Support Building	440	1-1/4"
2	F10	Future Office	100	3/4"
2	F11	Future Stud. Activities Building	390	1-1/4"
2	F12	Future Retail Office Building	80	1"
2	F13	Future Housing Building	2830	4"

\*Assumes steel pipe and pressure under 2psi



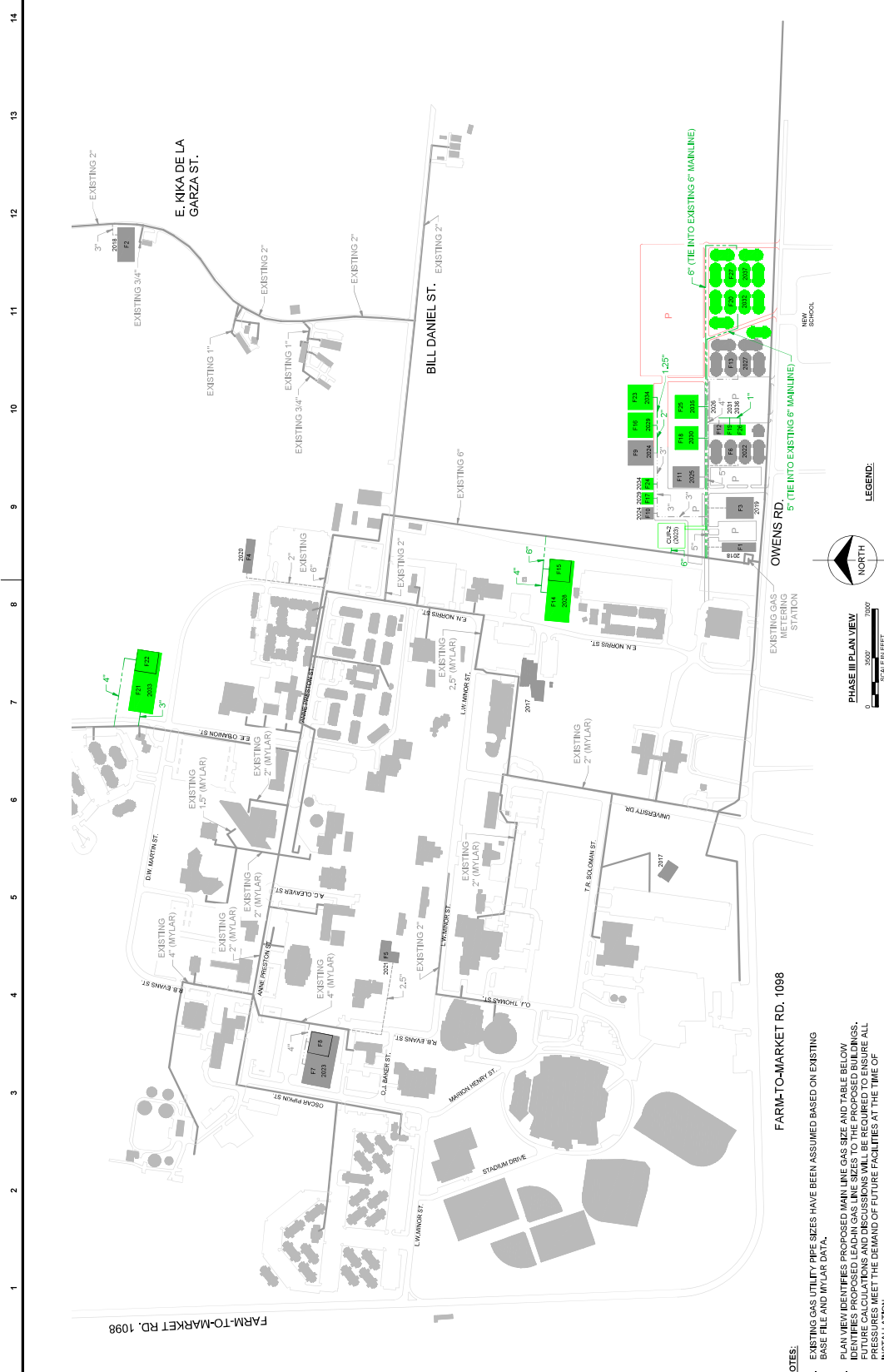
**SITE LOCATION**  
 PRAIRIE VIEW A&M UNIVERSITY  
 FARM-TO-MARKET RD., FORT WORTH, TX 76162



# PRAIRIE VIEW A&M UNIVERSITY



date	08/15/17	designed	TSV
checked	KAJ	checked	-
2017 UTILITY MASTER PLAN			
PROPOSED GAS UTILITY EXPANSION			
project	58470	drawing	SK-103
rev.	-	-	-



- PHASE 1: 2018-2023 (1-5YRS):**
- F1 - POLICE STATION (10,000 gsf)
  - F2 - MEAT PROCESSING FACILITY (20,000 gsf)
  - F3 - ICCF FACILITY (20,000 gsf)
  - F4 - ROTO BUILDING (10,000 gsf)
  - F5 - CULTURAL ARTS CENTER (21,000 gsf)
  - F6 - HOUSING 2 (from 2011 MP) (110,000 gsf)
- PHASE 2: 2023-2027 (6-10YRS):**
- F7 - FUTURE ACADEMIC BUILDING (105,080 gsf)
  - F8 - FUTURE STUD. ACTIVITIES BUILDING (18,880 gsf)
  - F9 - FUTURE OFFICE (4,480 gsf)
  - F10 - FUTURE STUD. ACTIVITIES BUILDING (18,880 gsf)
  - F11 - FUTURE RETAIL OFFICE BUILDING (3,450 gsf)
  - F12 - FUTURE HOUSING BUILDING (137,560 gsf)
- PHASE 3: 2028-2037 (11-20YRS):**
- F13 - FUTURE ACADEMIC BUILDING (105,080 gsf)
  - F14 - FUTURE LAB BUILDING (32,320 gsf)
  - F15 - FUTURE SUPPORT BUILDING (21,450 gsf)
  - F16 - FUTURE OFFICE (4,480 gsf)
  - F17 - FUTURE RETAIL OFFICE BUILDING (3,450 gsf)
  - F18 - FUTURE STUD. ACTIVITIES BUILDING (18,880 gsf)
  - F19 - FUTURE RETAIL OFFICE BUILDING (3,450 gsf)
  - F20 - FUTURE ACADEMIC BUILDING (105,080 gsf)
  - F21 - FUTURE LAB BUILDING (32,320 gsf)
  - F22 - FUTURE SUPPORT BUILDING (21,450 gsf)
  - F23 - FUTURE OFFICE (4,480 gsf)
  - F24 - FUTURE STUD. ACTIVITIES BUILDING (18,880 gsf)
  - F25 - FUTURE RETAIL OFFICE BUILDING (3,450 gsf)
  - F26 - FUTURE HOUSING BUILDING (137,560 gsf)
  - F27 - FUTURE HOUSING BUILDING (137,560 gsf)



**PHASE III PLAN VIEW**  
 SCALE IN FEET  
 0 50 100

**NOTES:**

- EXISTING GAS UTILITY PIPE SIZES HAVE BEEN ASSUMED BASED ON EXISTING BASE FILE AND MYLAR DATA.
- PLAN VIEW IDENTIFIES PROPOSED MAIN LINE GAS SIZE AND TABLE BELOW IDENTIFIES PROPOSED LEAD-IN GAS LINE SIZES TO THE PROPOSED BUILDINGS. THESE SIZES ARE BASED ON THE PROPOSED GAS DEMAND AND THE ALL PRESSURES MEET THE DEMAND OF FUTURE FACILITIES AT THE TIME OF INSTALLATION.

Phase	Key Building	Proposed Building Loads (MBH)	Pipe Size (inch)*
3	F14 Future Academic Building	2100	4"
3	F15 Future Lab Space/ Building	2980	3"
3	F16 Future Support Building	430	1-1/4"
3	F17 Future Office	90	1/2"
3	F18 Future Retail Office Building	70	1-1/4"
3	F20 Future Housing Building	2750	5"
3	F21 Future Academic Building	2040	3"
3	F22 Future Lab Space/ Building	2500	4"
3	F23 Future Support Building	420	1-1/4"
3	F24 Future Office	90	1/2"
3	F25 Future Stud. Activities Building	370	1-1/4"
3	F26 Future Retail Office Building	2980	6"
3	F27 Future Housing Building	5000	6"

Full Bulbout (CUP-2 Capacity, full bulbout)  
 \*Assumes steel pipe and pressure under 2psi