

Prairie View A&M University

A member of the Texas A&M University System

Annual Campus Security

&

Fire Safety



2013 Report

(Crime Statistics for **2011-2013**)

October 1, 2014



TABLE OF CONTENTS

Prairie View A&M University & PVAMU Police Department	3-4
Working Relationships with Other Law Enforcement Agencies	4-5
Reporting Procedures	6
Access to Campus Facilities at PVAMU Main Campus	8
Access to Campus Facilities at PVAMU Houston Nursing School Campus.	8
Access to Campus Facilities at PVAMU Northwest Graduate School Campus	8
Maintenance of Campus Facilities	8
Crime Statistics	9
Sex Offender Registry	10-11
Emergency Evacuation Procedures and Policies PVAMU Main Campus	11-28
Emergency Evacuation Procedures and Policies Northwest Graduate School Campus (NWHC)	12-23
Emergency Evacuation Procedures and Policies Houston Nursing School Campus.....	24-27
Shelter-in-Place Procedures - What it Means to “Shelter-in-Place”	28-29
Fire Safety at PVAMU Residential Facilities	30-36
Education of Members in the University Community.	37
Victim Assistance Services	38
Responsibilities of the University Community.	38
Notification of Missing Students	39
Alcohol and Drug Policies	39-40
Firearms and Weapons Policies	41
Emergency Medical Response Procedures.....	42
Sexual Assault Awareness & Education Policy	42-48
Sexual Harassment Policy	48-49
Judicial Procedures.....	49
Specific Information About Crime Statistics	51-52
Reportable Crimes and Geographical Categories	52-53
Annual Fire Safety Report on Student Housing	55-68
Prairie View A&M University Main Campus Crime Stats: 2011 - 2013	69-71
Prairie View A&M University Main Campus Crime Stats Hate Crimes: 2011 - 2013	72-74
PVAMU Northwest Campus Crime Stats: 2011 - 2013	75-77
PVAMU Northwest Campus Crime Stats: Hate Crimes 2011 - 2013	78-80
PVAMU Houston Nursing Center Crime Stats: 2011 - 2013	81-83
PVAMU Houston Nursing Center Crime Stats: Hate Crimes 2011 - 2013	84-86
Prairie View A&M University Campus Maps	87-89

PVAMU- Department of Public Safety (Campus Police Department)

The Police Department has the primary responsibility for security on campus. The Prairie View A&M University Department of Public Safety reports to the Vice President of Administration & Auxiliary Services. The Department performs a variety of law enforcement tasks including, investigation of criminal activity, apprehension of criminals, traffic enforcement, emergency response, and special security assignments. Additionally, the Prairie View A&M University Department of Public Safety coordinates criminal investigations with the outside law enforcement agencies and provides seminars on a variety of topics including Operation Identification, survey and statistical information, posters, brochures and safety fliers as part of the community policing/crime prevention programs.

The mission of the Prairie View A&M University Police Department is to promote and maintain personal safety, physical and environmental security. The department's commitment to support the academic mission includes preventive measures through education and enforcement, which promote awareness and individual responsibility in an effort to prevent criminal and safety mishaps. The Department's security policies and procedures are in compliance with law enforcement regulations established by the State of Texas, Department of Criminal Justice Services.

The policies and procedures also comply with federal requirements set forth in the Student Right-To-Know Act, and the Campus Security Act, that was signed into law in November 1990 (20 U.S.C. Section 1092). Title II of this Act is known as the Crime Awareness and Campus Security Act. Prairie View A&M University Police Department prepares, publishes and distributes an annual Campus Security Report in compliance with the **Jeanne Clery Disclosure of Campus Security Policy and Campus Crime Statistics Act**.

Institutions that participate in student financial aid programs under Title IV of the Higher Education Act of 1965 must comply with the conditions of this Act. The report includes information about campus security policies and procedures and crime statistics for the previous three years. These statistics focus on reported crimes that occurred on and off campus, as well as certain off campus buildings owned or controlled by Prairie View A&M University. Public property immediately adjacent to, and accessible from Prairie View A&M University is also included. The annual Campus Security Report also outlines Prairie View A&M University policies concerning campus security and crime prevention programs.

These policies relate to the following: the possession, use, and sale of alcoholic beverages (including the enforcement of state under-age drinking laws), drug and alcohol-abuse education programs, the reporting of crimes, sexual assault/sexual harassment education and prevention programs, and procedures for reporting sex offenses.

The report is available on October 1st of each year, and contains important tips to help every member of the community remain safe and avoid becoming a victim of crime. We make this report available to all students, faculty, and staff as well as the general public. Each member of the community is notified of the report and its exact website. Anyone, including prospective students and employees, may request a paper copy of this report by contacting the Prairie View A&M University Police Department at **(936) 261-1375**.

The Prairie View A&M University Department of Public Safety The department's support staff includes an administrative assistant and a records clerk and employs 19 sworn police officers. This number includes the chief of police, an investigator, lieutenants, and sergeants.

These officers handle vehicle access to the campus, special assignments and routine foot patrol of the campus buildings and grounds. In addition to the sworn police officers, Prairie View A&M University Department of Public Safety also provides staff in the following positions: Security Attendants, Dispatchers, and one Security Attendant Supervisor.

PRAIRIE VIEW A&M UNIVERSITY

Prairie View A&M University is the second oldest institution of higher education in the state of Texas. Located at It had its beginnings in 1876, the first year of the Texas Constitution, of the common free school system and at the dawn of public higher education in Texas. Approximately 150 plus acres and approximately 61 buildings provide the setting for the main campus of Prairie View A&M University. In addition, the University provides courses at satellite campuses, which include the Northwest Graduate School Campus, and the Houston Nursing Center located in Houston Texas. The University is established for the general purpose of preparing students to become life-long learners and to compete successfully in a rapidly changing society.

Establishment Excerpts taken from: "Prairie View, A Study In Public Conscience" by Dr. George Ruble Woolfolk - "A Centennial History of Texas A&M University, 1876-1976 Vol. II" by Henry C. Dethloff Edited by Frank D. Jackson

Prairie View A&M University, the first state supported College in Texas for African Americans, was established during the Reconstruction Period after the Civil War. This was an historical period in which political and economic special interest groups were able to aggressively use the Federal Government to establish public policy, in an attempt to "alter or reshape the cultural milieu of the vanquished southern states". The University had its beginnings in the Texas Constitution of 1876, which, in separate articles, established an "Agricultural and Mechanical College" and pledged that "Separate schools shall be provided for the white and colored children, and impartial provisions shall be made for both." As a consequence of these constitutional provisions, the Fifteenth Legislature established "Alta Vista Agricultural and Mechanical College of Texas for Colored Youth" on August 14, 1876.

LAW ENFORCEMENT AUTHORITY AND AGREEMENTS FOR INVESTIGATING CRIMES

Prairie View A&M University police officers derive law enforcement authority from the State of Texas training requirements for law enforcement officers as established by the Department of Criminal Justice Services. Prairie View A&M University police officers are sworn officers with full powers of arrest. They are empowered and mandated to enforce all federal, state and local laws. Officers and supervisors are armed, and must undergo annual firearms qualifications. In all cases, each officer of the department should use the minimum amount of force that is consistent with the accomplishment of his/her mission and should exhaust reasonable means of apprehension or defense before considering the use of a firearm.

After an incident is reported, a police officer is dispatched to the site of the complainant/victim and has the authority to make an arrest if necessary. Police officers prepare and submit incident/offense reports when warranted and the investigator will complete all necessary follow-up investigations.

LAW ENFORCEMENT AUTHORITY AND AGREEMENTS FOR INVESTIGATING CRIMES *(continued)*

The Prairie View A&M University Department of Public Safety, maintains a good working relationship with all local and state law enforcement agencies including: the City of Prairie View Police Department, Waller County Sheriff's Office, Waller Police Department, Houston Police Department, Harris County Sheriff's Office and the Texas Department of Public Safety. This cooperation also extends to the reporting of crimes to the appropriate agencies, participation in police radio communications and computer network training programs, special events coordination, and investigations of serious crimes. Information on crimes that may impact or relate to the surrounding community and state is shared directly with appropriate law enforcement agencies. Additionally, Prairie View A&M University Department of Public Safety investigators meet periodically with the City of Prairie View Police Department detectives and intelligence units to discuss campus crime trends and police intelligence matters. Police officers from local agencies also work special events hosted by the university.

REPORTING PROCEDURES

General Procedures for Reporting a Crime or Emergency

Community members, students, faculty, staff, and guests are encouraged to report all crimes and public safety-related incidents to PVAMUPD in a timely manner. Both the Harris County Sheriff's Office and the Houston Police Department patrol the majority of the Northwest Campus and Houston Police Department patrols the PVAMU Houston School of Nursing Campus. To report a crime or an emergency on the **Northwest Campus**, call **911**. To report a crime or emergency on the **PVAMU Houston School of Nursing Campus**, call **911**. If a crime or emergency occurs at on the main campus call **936-261-1375** or 911. Dispatchers are available at **the 936-261-1375** number 24 hours a day to answer your calls. In response to a call, PVAMUPD will take the required action, either by dispatching an officer to the caller's location or asking

the caller to report to PVAMUPD to file an incident report. All PVAMUPD incident reports are forwarded to the Division of Student Affairs for review and referral to the Office of Student Conduct for potential action, as appropriate. PVAMUPD Investigators will investigate a report when it is deemed appropriate.

Additional information obtained via any investigation will also be forwarded to the Office of Student Conduct. If assistance is required from the Prairie View Police Department or the Prairie View Fire, Waller County, and/or Owens Franklin Health Center EMS Department(s), PVAMUPD will contact the appropriate unit. If a sexual assault or rape should occur on campus, staff on the scene, including PVAMUPD, will offer the victim a wide variety of services. PVAMUPD employs a Coordinator of Victim Services and Educational Initiatives who is available to answer questions and assist victims in identifying and obtaining the necessary resources.

Crimes should be reported to the PVAMU Police Department to ensure inclusion in the annual crime statistics and to aid in providing timely warning notices to the community, when appropriate. For example, a crime that was reported only to the Waller County Sheriff's Office would not be included in the PVAMU crime statistics. PVAMUPD sends a request each year to the University Counseling Center that encourages counselors to inform the persons they are counseling of the procedures to report crimes on a voluntary, confidential basis for inclusion in the annual disclosure of crime statistics.

Timely Warnings

In an effort to provide timely notice to the PVAMU community, and in the event of a serious incident which may pose an on-going threat to members of the PVAMU community, an Alert is sent by blast email or text message to all students and employees on campus. The alerts are generally written and distributed to the University community by the Chief of Police or a designee and they are approved and distributed to the community by the Executive Director for Communications. Updates to the PVAMU community about any particular case resulting in an Environmental Health & Safety Alert may be distributed via blast email or text message, may be posted on the Campus Advisories website, or may be shared with *The PVAMU Panther* for a follow-up story. Environmental Health & Safety Alert posters may also be posted by PVAMUPD in campus buildings when deemed necessary. When Environmental Health & Safety Alerts are posted in campus buildings, they are printed on **gold paper** and posted in the lobby/entrance area of the affected building(s) for seven days.

Environmental Health & Safety Alerts are usually distributed for the following Uniform Crime Reporting Program (UCR)/National Incident Based Reporting System (NIBRS) classifications: **arson, criminal homicide, and robbery**. Incidents of aggravated assault and sex offenses are considered on a case-by-case basis, depending on the facts of the case and whether there is a continuing danger to the campus community.

For example, if an assault occurs between two students who have a disagreement, there may be no on-going threat to other PVAMU community members and an Environmental Health & Safety Alert would not be distributed. The PVAMU Police Chief or designee reviews all reports to determine if there is an on-going threat to the community and if the distribution of an Environmental Health & Safety Alert is warranted. Environmental Health & Safety Alerts may also be issued for other crime classifications, as deemed necessary. **A daily crime log is available for review** 24 hours a day at the PVAMUDPS Office located at the corner of Ann Preston and Reda Bland Evans Street. The information in the crime log typically includes the case number, classification, date reported, date occurred, time occurred, general location, and disposition of each reported crime.

Statistical Disclosure of Reported Incidents

Incidents reported to PVAMUPD that fall into one of the required reporting classifications will be disclosed as a statistic in this annual brochure published by PVAMUPD.

Reporting Methods Available on Campus

PVAMUPD can be contacted from **on-campus landline telephones** by dialing **4-911** or by **dialing 936-261-1375** and also from any **Blue light telephone around campus**. For an emergency at Northwest Campus, dial **911** and for a non-emergency, dial the main campus DPS Dispatch office at **936-261-1375**. For an emergency at PVAMU Houston School of Nursing Campus, dial **911** and for a non-emergency, call the main campus DPS Dispatch office at **936-261-1375**.



Off-Campus Crime

If **Prairie View City Police Department** (Telephone Number-(936)-857-3521 - 8a. – 5p/M-F) is contacted about criminal activity occurring off-campus involving PVAMU students, PVPD may notify PVAMUPD. However, there is no official PVPD policy requiring such notification. Students in these cases may be subject to arrest by PVPD and University disciplinary proceedings through the Office of Student Conduct.

Confidential Reporting Procedures

If you are the victim of a crime and do not want to pursue action within the University system or the criminal justice system, you may still consider making a confidential report. With your permission, a PVAMUPD officer can file a report as to the details of the incident without revealing your identity. The purpose of a confidential report is to comply with your wish to keep the matter confidential, while taking steps to ensure the future safety of yourself and others. With such information, the University can keep an accurate record of the number of incidents involving students, employees, and visitors; determine where there is a pattern of crime with regard to a particular location, method, or assailant; and alert the campus community to potential dangers. Reports filed in this manner are counted and disclosed in the annual crime statistics for the institution, and when they involve allegations of sexual harassment (including sexual violence) are made available to the University's Title IX Coordinator. Reporting procedures applicable to allegations of sexual assault are further discussed later in this brochure.

The PVPD Response to Student Organizations

PVAMU does not have any officially recognized student organizations that have housing facilities -off-campus. There are several recognized student organizations that occupy privately owned houses within the campus boundaries. If PVPD is called by a citizen to respond to one of those locations, PVPD will typically notify PVAMUPD to respond with them or they will notify PVAMUPD after they have responded to inform PVAMUPD of the situation. However, PVPD does this out of courtesy and is not -required to notify or involve PVAMUPD when they respond to a call involving private property.

TIPS Line

PVAMUPD operates a -TIPS line to allow people to anonymously report security and safety related concerns and to provide PVAMUPD with -tips about criminal incidents or behavior on campus. Call **(936) 261-2222** to reach this recorded line. The TIPS line is monitored by the PVAMU Chief of Police. The TIPS line should not be used in emergency situations. For emergencies call **using a land line on campus 4-911** or **936-261-1375** and **using cell phones call 911 on or off campus.**

ACCESS POLICY (TO MAIN CAMPUS FACILITIES)

During regular business hours, with the exception of the University Village Apartment Complexes, most of the University's campus facilities operate under an open concept, allowing freedom of movement for members of the Prairie View A&M University community.

The University campus and University Village Complexes are patrolled throughout the day on a 24 hours per day basis, seven days a week. In addition, police and security officers check buildings regularly. During non-business hours, access to university facilities is by key, if issued or by admittance via the university police or security staff. Over extended breaks, the doors of all buildings will be secured around the clock. Some facilities may have individual hours which may vary at different times of the year. Examples are the John B. Coleman Library and the Billy Nicks Athletic complex which will be secured according to schedules developed by the department responsible for the facility. Emergencies may necessitate changes or alterations to any posted schedules.

Access to Campus at PVAMU Houston School of Nursing Campus

BUILDING USE

Badges

All students, faculty, and staff members must have a building access badge to enter the College of Nursing. Badges are made during the week of registration and other times as designated. Should a badge need to be replaced, submit a request in the Office of Admissions and Student Services.

Security Desk

Students who do not have their badges will be required to sign in at the Security Desk, first floor. Visitors to the College of Nursing must also sign in at the security desk and wait for approval to proceed beyond the first floor.

Building Hours

Students may use the College of Nursing student areas from 6 a.m. to 12 midnight. After 6 p.m. and prior to 8 a.m. students must use their building access card to enter the building and other designated areas. Students must use access badges individually and must not use their badges to allow other students, visitors, etc. to enter building.

Access to Campus at Northwest Graduate School

Academic and Administrative Building The Northwest Graduate School Campus is part of the city of Houston and, as such, is open to the public. The building is open to the public, at a minimum, during normal business hours. Most academic and administrative buildings do not have a PVAMUPD officer assigned to them. However, Allied Barton Security Guards patrol the building on a regular basis. For information about the access protocol to the building, see the building manager, a department head, or contact the Dean's office at **(713) 790-7272**.

Maintenance of Campus Facilities

Facilities and landscaping are maintained in a manner that minimizes hazardous conditions. PVAMUPD regularly patrols both campuses and reports malfunctioning lights and other unsafe physical conditions to Facilities Management for correction. Other members of the University community are helpful when they report equipment problems to PVAMUPD or to Facilities Management.

Crime Statistics

The information below provides context for the crime statistics reported as part of compliance with the Clery Act.

The procedures for preparing the annual disclosure of crime statistics include reporting statistics to the University community obtained from the following sources: the PVAMU Police Department (PVAMUPD), the WALLER COUNTY Sheriff's Office, Prairie View Police Department (PVPD), and non-police officials (as defined below). For statistical purposes, crime statistics reported to any of these sources are recorded in the calendar year the crime was reported.

A written request for statistical information is made on an annual basis to all Campus Security Authorities (as defined by federal law) and to all University Deans, Directors, and Department Heads. Statistical information is requested and provided to PVAMUPD by the employees at the University Counseling Center and the Student Health Service, even though they are not required by law to provide statistics for the compliance document.

All statistics are gathered, compiled, and reported to the University community via this report, entitled -Annual Security and Fire Safety ReportI which is published by PVAMUPD. PVAMUPD submits the annual crime statistics published in this brochure to the Department of Education (ED). The statistical information gathered by the Department of Education is available to the public through the ED website.

PVAMUPD sends an e-mail to every enrolled student and current employee on an annual basis. The e-mail includes a brief summary of the contents of this report. The e-mail also includes the address for the PVAMUPD website where the -Annual Security and Fire Safety ReportI brochure can be found online (<http://www.pvamu.edu/pages/2292.asp>) and a physical copy may be obtained by making a request to the PVAMUPD (936-261-1375).

Campus Security Authorities

A Campus Security Authority is any individual or individuals who have responsibility for campus security but who do not constitute a campus police department or campus security department. This includes officials of the University who have significant responsibility for student and campus activities, including, but not limited to, student housing, student discipline, and campus judicial proceedings. If such an official is a pastoral or professional counselor, the official is not considered a campus security authority when acting in that capacity.

Counselors with Confidential Reporting Procedures

As a result of the negotiated rule-making process which followed the signing into law, the 1998 amendments to 20 USC Section 1092 (f), clarification was given to those considered to be campus security authorities. Campus -Pastoral CounselorsI and Campus -Professional CounselorsI, when acting as such, are not considered to be a campus security authority and are not required to report crimes for inclusion into the annual disclosure of crime statistics. As a matter of policy, they are encouraged, if and when they deem it appropriate, to inform persons being counseled of the procedures to report crimes on a voluntary basis for inclusion into the annual crime statistics.

The Rule-making Committee Defines Counselors as:

Pastoral Counselor: An employee of an institution who is associated with a religious order or denomination, recognized by that religious order or denomination as someone who provides confidential counseling and who is functioning within the scope of that recognition as a pastoral counselor. **Professional Counselor:** An employee of an institution whose official responsibilities include providing psychological counseling to members of the institution's community and who is functioning within the scope of his or her license or certification.

SEX OFFENDER REGISTRY AND ACCESS TO RELATED INFORMATION

Incarceration may remove a sex offender from the streets but it does nothing to prevent the offender from committing another crime when released. The federal Campus Sex Crimes Prevention Act, enacted on October 28, 2000, went into effect October 28, 2002. The law requires institutions of higher education to issue a statement advising the campus community where law enforcement agency information provided by a State concerning registered sex offenders may be obtained. It also requires sex offenders to register in a State to provide notice, as required under State law, of each institution of higher education in that State at which the person is employed, carries on a vocation, volunteers services or is a student. Non-resident offenders entering the State for employment, to carry on a vocation, volunteer services or as a student attending school who are required to register in their state of residence or who would be required to register under this section if a resident of the State shall, within ten days of accepting employment or enrolling in school in the State be, required to register and re-register pursuant to this section.

For purposes of this section -student means a person who is officially enrolled on a full-time or part-time basis, in any public or private educational institution, including any secondary school, trade or professional institution, or institution of higher education.

Information concerning offenders registered with the Sex Offender and Crimes Against Minors Registry may be disclosed to any person requesting information on a specific individual in accordance with the law. Information regarding a specific person requested pursuant to the law shall be disseminated upon receipt of an official request form that may be submitted directly to the State's Department of Public Safety or to the State Police through a local law-enforcement agency.

The Texas Department of Public Safety shall make Registry information available upon request, to criminal justice agencies including local law -enforcement agencies through the Texas Criminal Information Network (TCIC). Registry information provided under this section shall be used for the purposes of the administration of criminal justice, for the public in general and children in particular. Use of the information for purpose not authorized by this section is prohibited and a willful violation of this section with the intent to harass or intimidate another shall be punished as a Class 1 Misdemeanor.

SEX OFFENDER REGISTRY AND ACCESS TO RELATED INFORMATION (continued)

The Texas Department of Public Safety maintains a system for making certain Registry information on violent sex offenders publicly available by means of the Internet. The information made available includes the offender's name; all aliases which he has used or under which he may have been known; the date and locality of the conviction and a brief description of the offense; his date of birth, current address and photograph; and such other information as the State Police may from time to time determine is necessary to preserve public safety. The system is secure and is not capable of being altered except by or through the State Police.

The system is updated each business day with newly received registrations. Pertinent web site addresses for securing related information:

www.txdps.state.tx.us

(Click on "Crime Records" then "Sex Offender Search")
or direct link at:

[https://records.txdps.state.tx.us/DPS WEB/SorNew/index.aspx](https://records.txdps.state.tx.us/DPS_WEB/SorNew/index.aspx)

EMERGENCY EVACUATION PROCEDURES AND POLICIES

Emergency Response

The University's Incident Manuals (<http://www.pvamu.edu/pages/7238.asp>) include information about evacuation guidelines (<http://www.pvamu.edu/pages/7280.asp>); and local contingency and continuity planning requirements. University departments are responsible for developing contingency plans and continuity of operations plans for their staff and areas of responsibility. The University conducts numerous emergency response exercises each year, such as table top exercises, field exercises, and tests of the emergency notification systems on campus. These tests are designed to assess and evaluate the emergency plans and capabilities of the institution.

PVAMU police officers and supervisors have received training in Incident Command and Responding to Critical Incidents on Campus. The Incident Command System (ICS) is utilized when responding to incidents and PVAMUPD officers work with other Office of Environmental Health & Safety units, PVAMU departments, and local public safety agencies to manage, mitigate, and recover from incidents.

General information about the emergency response and evacuation procedures for PVAMU are publicized each year as part of the University's Clery Act compliance efforts, and is available on the PVAMU website (<http://www.pvamu.edu/pages/6145.asp>), and (<http://www.pvamu.edu/pages/6233.asp>) Detailed information and updates to the PVAMU **Emergency Operations Manual** and departmental **Contingency and Continuity Plans** are available on the website of **Prairie View A&M University Emergency Preparedness Information** at <http://www.pvamu.edu/pages/6145.asp>.

Emergency Response (contd.)

The Office of Environmental Health and Safety and the Office of Public Relations receive information from various offices/departments on campus, including PVAMUPD. If one of these Safety units confirms that there is an emergency or dangerous situation that poses an immediate threat to the health or safety of some or all members of the PVAMU community, PVAMUPD, Environmental Health & Safety and Public Relations will collaborate to determine the **content of the message and will use some or all of the systems described below to communicate the threat to the PVAMU community or to the appropriate segment of the community, if the threat is limited to a particular building or segment of the population.**

Environmental Health & Safety and Public Relations will, without delay and taking into account the safety of the community, determine the content of the notification and initiate the notification system, unless issuing a notification will, in the judgment of the first responders (including, but not limited to: PVAMUPD, PVPD, and/or the Waller County Fire and Emergency Medical Services), compromise the efforts to assist a victim or to contain, respond to, or otherwise mitigate the emergency. In the event of a serious incident that poses an immediate threat to members of the PVAMU community, the University has various systems in place for communicating information quickly. Some or all of these methods of communication may be activated in the event of an immediate threat to the PVAMU campus community. These methods of communication include PAS Alert System, a system that provides email and text message alerts to members of the PVAMU community.

Students, staff, and faculty are automatically signed up for email alerts through their official PVAMU email address. Currently, PAS Alert System is only available for those in the PVAMU community. Alerts can be sent out through official PVAMU social media pages as well, including Facebook <https://www.facebook.com/pvamu> and Twitter (@<https://twitter.com/PVAMU>). Members of the larger community who are interested in receiving information about emergencies on campus should use the social media, or call the **(936)261-1375) PVAMUPD Dispatch office**. PVAMU community members are encouraged to notify PVAMUPD of any situation or incident on campus that involves a significant emergency or dangerous situation that may involve an immediate or ongoing threat to the health and safety of students, faculty, staff, or visitors on campus.

PVAMUPD has the responsibility of responding to, and summoning the necessary resources, to mitigate, investigate, and document any situation that may cause a significant emergency or dangerous situation. In addition, PVAMUPD has a responsibility to respond to such incidents to determine if the situation does in fact, pose a threat to the community. If so, federal law requires that the institution notify the campus community or the appropriate segments of the community that may be affected by the situation.

Northwest Graduate School Campus/ Northwest Houston Center (NWHC) **Emergency Preparedness**

PURPOSE

The purpose of the Northwest Houston Center (NWHC) Emergency Preparedness Plan is to provide for the safety and security of students, employees and visitors; preserve the structure and order; minimize property damage; and ensure rapid recovery in times of emergency (natural or human caused disasters). Whenever an emergency affecting the NWHC escalates to a level that cannot be handled by routine measures, the Dean will seek guidance from University and local law officials.

Northwest Graduate School Campus/ Northwest Houston Center (NWHC)

Emergency Preparedness

MINOR EMERGENCY

Any incident, potential or actual, that will impact but not seriously affect the overall functional capacity of the NWHC. Emergencies of this type will typically be handled in-house with little disruption of normal work or educational routine. Outside emergency services may or may not be needed. Examples: power outage, technology failure, water leak, etc.

MAJOR EMERGENCY

An incident, potential or actual, that affects an entire building or portion of the campus, and that will disrupt the overall operation of the NWHC. Outside emergency services will be required, as well as major efforts from NWHC Security, Facilities/Maintenance, Main Campus Support Services. Example: Fire, flooding, ice storm, etc.

DISASTER

Any event or occurrence that has taken place and has seriously impaired or halted the operations of the NWHC. In some cases there will be injuries, casualties, and severe property damage. A coordinated effort of campus-wide resources will be required to effectively control the situation. Outside emergency services will be essential. Evacuation of part or all the campus is probable.

COMMAND CENTER

The Emergency Command Center will be located in Room #104 (conference room) which is located on the 1st floor of the NWHC and is accessible from the security suite and the north hallway.

Practice Drills

All Students, faculty, staff and administrators will participate in campus-wide drills on a regular basis.

Campus Zones

The NWHC will be divided into four zones. Each zone will have a zone captain, a designated exit rout and a meeting place will be designated.

Zone Captains

Each Zone will have a zone captain. The zone captain is responsible for knowing the exit

Accountability of Students, Employees and Visitors

On-site security in collaboration with the Dean, Customer Service Coordinator and Information Resource Specialist will verify headcounts and location of individuals. In case of a building intruder, the blast text message system will be employed to give directions to shelter in place.

Supplies

Supplies will include emergency contact list, campus phone directory, course schedule, building utilization schedule, portable hand radios, first aid kit and cellular phone.

Internal Communications

The established internal communication protocol will be as follows: (flow of information)

- a. Security to Dean of Center
- b. Dean of Center to Customer Service Coordinator and Information Resource Specialist
- c. Customer Service Coordinator to Faculty and Students
- d. Information Resources Specialist to Staff and Visitors

Northwest Graduate School Campus/ Northwest Houston Center (NWHC) Emergency Preparedness

External Communications

The established external communication protocol will be as follows: (flow of information)

- a. Security to Local Law Officials
- b. Dean of Center to University Personnel
 - a. Emergency Management
 - b. President and/or Provost
 - c. Director of Public Relations

EMERGENCY CONTACTS

Name	Contact Information	Location/Address	E-mail
Harris County Police	Office: 713-221-6000 (Dispatch) Office: 281-955-3362 Closest Sub-Station	17375 State Highway 249, Houston, TX 77064	
Capt. Anthony Gregory NWHC Security	Office: 936-261-1394 Mobile: 832-293-9692	9449 Grant Road Houston, Texas 77070	anthonylgregory@gmail.com
Kevin Stokes NWHC Security	Office: 936-261-1394 Mobile: 678-901-7005	9449 Grant Road Houston, Texas 77070	Stokesk28@yahoo.com
Joe Donatto NWHC Security	Office: 936-261-1394 Mobile: 832-443-5305	9449 Grant Road Houston, Texas 77070	josephdonatto@yahoo.com
Michael Rosson NWHC Security	Office: 936-261-1394 Mobile: 713-907-4764	9449 Grant Road Houston, Texas 77070	Toto49@att.net
Sandles, John Building Maintenance	Office: 936-261-3882 C.O.N.: 713-790-7200 Mobile: 281-217-0057 Home: 832-688-8952	9449 Grant Road Houston, Texas 77070	jwsandles@pvamu.edu
Chalmers, Ester Environmental Health and Safety	Office: 936-261-1743 Mobile: 713-302-0773 Home: 979-836-8642	P.O. Box 519, MS 1310 Prairie View, TX 77446	eachalmers@pvamu.edu
White, Darron Environmental Health and Safety	Office: 936-261-1746 Mobile: 832-265-8205 Home: 832-265-8205	P.O. Box 519, Mailstop 1310 Prairie View, TX. 77446	dawhite@pvamu.edu
Watson, Larry Assistant Vice President, Physical Plant	Office: 936-261-9721 Mobile: 281-652-6445 Home: 281-256-2361	P.O. Box 519, MS 1420 Prairie View, TX 77446 20719 Durand Oak Drive Cypress, TX 77433	ljwatson@pvamu.edu

Northwest Graduate School Campus/ Northwest Houston Center (NWHC)
Emergency Preparedness (continued)

Emergency Contacts

Name	Contact Information	Location/Address	E-mail
Reed, Sheleah Director of Public Relations	Office: 936-261-2121 Mobile: 281-250-3979	Alvin I Thomas Bldg, Ste 102 P. O. Box 519, MS 1100 Prairie View, TX 77446-0519	sdreed@pvamu.edu
Wright, George C. President	Office: 936-261-2111 Mobile: 281-639-9387 Home: 281-304-1453	Alvin I Thomas Bldg, Ste 202 P. O. Box 519, MS 1001 Prairie View, TX 77446-0519	gcwright@pvamu.edu
Thomas-Smith, E. Joahanne Provost	Office: 936-261-2175 Mobile: 281-844-2581 Home: 281-859-3824	Alvin I Thomas Bldg, Ste 212 P. O. Box 519, MS 1023 Prairie View, TX 77446-0519	Ejthomas-smith@pvamu.edu
McFrazier, Michael Vice Provost & Dean	Office: 713-790-7273 Mobile: 713-515-9829 Home: 281-861-8689	9449 Grant Road Houston, Texas 77070	mlmfrazier@pvamu.edu
Davis, Michelle Administrative Assistant	Office: 713-790-7286 Mobile: 281-687-3394 Home: 281-256-6599	9449 Grant Road Houston, Texas 77070	madavis@pvamu.edu
Mendoza, Valerie Customer Service Coordinator	Office: 713-790-7281 Mobile: 832-725-1141	9449 Grant Road Houston, Texas 77070 16211 Charter Stone Drive Houston, TX 77070	vmendoza@pvamu.edu
Allen, Tiffany Information Resource Specialist	Office: 713-790-7146/7285 Mobile: 281-736-4084	9449 Grant Road Houston, Texas 77070 13801 Napoli Dr. #8201 Houston, TX 77070	tgallen@pvamu.edu heyheyttiffanyevents@gmail.com
Booker, Corliss Lab Technician	Office: 713-790-7280 Mobile: 713-409-3019 Home: 281-591-2183	9449 Grant Road Houston, Texas 77070 13631 Larwood Lane Houston, Texas 77038	cdbooker@pvamu.edu
Brumfield, Elizabeth (Jean) Distance Service Librarian	Office: 713-790-7282 Mobile: 412-478-3712 Home: 281-955-7558	9449 Grant Road Houston, Texas 77070 11300 Regency Green Dr. #3311 Cypress, TX 77429	ejbrumfield@pvamu.edu

Northwest Graduate School Campus/ Northwest Houston Center (NWHC)
Emergency Preparedness (continued)

CONTACT INFORMATION

FACULTY HOUSED AT NWHC

Name	Contact Information	Location/Address	E-mail
Britton, Keshea	Office: 713-790-7111 Mobile: 832-573-8696	NWHC – Suite 220 College of Nursing 6436 Fannin Street, Suite # 1144 Houston, TX 77030	kjgreen@pvamu.edu
Erdely, Jennifer L.	Office: 936-261-3736 / 3740 Mobile: 504-615-2112 2 nd Mobile: 832-713-7530	NWHC – Suite 225 B College of Arts & Sciences - Communications P.O. Box 519; MS 2220, Prairie View, TX 77446	jlrdely@pvamu.edu
Junious, DeMonica L.	Office: 713-790-7036 Mobile: 281-408-3493	NWHC – Suite 218 College of Nursing 6436 Fannin Street, Suite 1146 Houston, TX 77030	djunious@pvamu.edu
Perez, Daniel	Office: 936-261-9223 Mobile: 956-607-2411	NWHC – Suite College of Business EMBA 1B126 Hobart Taylor P.O.Box 519; MS 2310, Prairie View, TX 77446	drperez@pvamu.edu
Taylor, Toniesha L.	Office: 936-261-3736 / 3705 Mobile: 408-504-3262	NWHC – Suite 225B College of Arts & Sciences - Communications P.O. Box 519; MS 2220, Prairie View, TX 77446	ttaylor@pvamu.edu drtonieshataylor@gmail.com

Northwest Graduate School Campus/ Northwest Houston Center (NWHC)
Emergency Preparedness (continued)

CONTACT INFORMATION

FACULTY TEACHING AT NWHC – FALL 2012

Name	Contact Information	Location/Address	E-mail
Bell, Reginald	Office: 936-261-9247 Mobile: 832-693-3148	College of Business – Mgmt & Mrkt 2H263 Hobart Taylor P.O. Box 519; MS 2310, Prairie View, TX 77446	ribell@pvamu.edu
Chong, Hock Gin	Office: 936-261-9250 Home: 281-500-7928	College of Business – ACCT P.O. Box 519; MS 2310, Prairie View, TX 77446	hgchong@pvamu.edu
Collins, Donald	Office: 936-261-3643 Mobile: 713-248-8785	College of Education – EL&C P.O. Box 519; MS 2420, Prairie View, TX 77446	drcollins@pvamu.edu
Davis, Charlotte	Mobile: 713-248-8314	ADJUNCT College of Education - EL&C P.O. Box 1433, Spring, TX 77383	cdavis@aldine.k12.tx.us
Gardiner, Carl	Office: 936-261-3672 Mobile: 832-293-2981	College of Education – EL&C P.O. Box 519; MS 2420, Prairie View, TX 77446	clgardiner@pvamu.edu
Glenn, Clemment	Office: 936-261-3646 Mobile: 979-574-0371	College of Education – EL&C P.O. Box 519; MS 2420, Prairie View, TX 77446	clement_glenn@pvamu.edu
Hobson, Lisa	Office: 936-261-3517 Mobile: 832-663-1399	College of Education – EL&C P.O. Box 519; MS 2420, Prairie View, TX 77446	ldhobson@pvamu.edu
Hoffman-Miller, Patricia	Office: 936-261-3647 Mobile: (713) 452-0102 Home: (281) 758-1564	College of Education – EL&C P.O. Box 519; MS 2420, Prairie View, TX 77446	phmiller@pvamu.edu

Northwest Graduate School Campus/ Northwest Houston Center (NWHC)
Emergency Preparedness (continued)

Name	Contact Information	Location/Address	E-mail
Holloway, Reginald	Office: 936-261-9256 Mobile: 979-758-1080	College of Business - MIS 2B211 Hobart Taylor P.O. Box 519; MS 2310, Prairie View, TX 77446	rlholloway@pvamu.edu
Huang, Henry	Office: 936-261-9210 Mobile: 832-276-3834	College of Business – Accounting 1B122 Hobart Taylor P.O. Box; MS 2310, Prairie View, TX 77446	hhuang@pvamu.edu
Hughes, Teresa	Office: 936-261-3403 Mobile: 281-443-0198	College of Education – Curriculum & Instruction P.O. Box 519; MS 2410, Prairie View, TX 77446	tahughes@pvamu.edu
Joyce, Marguerite	Mobile: 713-884-0715	ADJUNCT College of Business – Mgmt & Mrkt	joycem@att.net
Kritsonis, William	Office: 936-261-3652 Mobile: 832-483-7889	College of Education – EL&C P.O. Box 519; MS 2420, Prairie View, TX 77446	wakritsonis@pvamu.edu
Lee, Buryung Brian	Office: 936-261-9258 Mobile: 832-830-2176	College of Business – Accounting 2A203 Hobart Taylor P.O. Box; MS 2310, Prairie View, TX 77446	brlee@pvamu.edu
McCree, Carol	Office: 936-261-3622 Mobile: 504-952-0743	College of Education – EL&C P.O. Box 519; MS 2420, Prairie View, TX 77446	cdmccree@pvamu.edu

Northwest Graduate School Campus/ Northwest Houston Center (NWHC)
Emergency Preparedness (continued)

Name	Contact Information	Location/Address	E-mail
McMillan, Ben	Mobile: 713-418-0199	ADJUNCT - School of Architecture Community Development 25414 Avery Hill Lane, Houston, TX 77373	bcmcmillanidellc@aol.com
Mod, Anna	Mobile: 713-630-1086	ADJUNCT - School of Architecture Community Development SWCA Environmental Consultants 7255 Langtry, Suite 100, Houston, TX 77040	amod@swca.com
Petterway, Arthur L.	Office: 936-261-3649 Mobile: 832-693-2809	College of Education – EL&C - 203 P.O. Box 519; MS 2420, Prairie View, TX 77446	alpetterway@pvamu.edu drpetterway@gmail.com
Riles, Kevin	Office: 936-261-9808 Mobile: 281-451-8437	School of Architecture - Community Development 3950 Ramble Creek, Missouri City, TX 77459	kvriles@pvamu.edu
Roberson, Renelda	Office: 936-261-3534 Mobile: 832-633-6130	College of Education – EL&C P.O. Box 519; MS 2420, Prairie View, TX 77446	rcroberson@pvamu.edu
Rose, Courtney	Office: 713-743-6027 Mobile: 832-309-7003	ADJUNCT School of Architecture - Community Development 16534 Lacey Lane, Missouri City, TX 77489	courtney@gjproperties.com courtney@georgejohnsondev.com
Sampson, Samuel	Office: 936-261-3691 Mobile: 832-372-8484	ADJUNCT College of Education – EL&C University College P.O. Box 519; MS 3002, Prairie View, TX 77446	sssampson@pvamu.edu

Northwest Graduate School Campus/ Northwest Houston Center (NWHC)
Emergency Preparedness
 (continued)

Name	Contact Information	Location/Address	E-mail
Sutanto, Peter	Office: 936-261-9212	College of Business P.O. Box 519; MS 2315, Prairie View, TX 77446	pwsutanto@pvamu.edu
Tandon, Sudhir	Office: 936-261-9201 Mobile: 281-794-6231	College of Business - Accounting P.O. Box 519; MS 2315, Prairie View, TX 77446	sutandon@pvamu.edu
Thompson, Jill	Office: 936-261-3650 Mobile: 770-617-2332	College of Education – EL&C P.O. Box 519; MS 2420, Prairie View, TX 77446	jthompson@pvamu.edu
Vesy, Jermaine	Office: 936-261-9211 Mobile: 512-694-6400	College of Business – Mgmt. & Mrkt. P.O. Box 519; MS 2315, Prairie View, TX 77446	jtvesy@pvamu.edu
Webster, Waymon	Office: 936-261-3641 Home: 936-857-3360	College of Education – EL&C P.O. Box 519; MS 2420, Prairie View, TX 77446	wtwebster@pvamu.edu
White, F. A	Office: 936-261-3658 Mobile: 832-444-6509	College of Education – EL&C P.O. Box 519; MS 2420, Prairie View, TX 77446	frwhite@pvamu.edu
Williams, Veeda	Office: 936-261-3210 Mobile: 281-513-2020	College of Arts & Science - Sociology Woolfolk Building, Suite 305 P.O. Box 519, MS 2203, Prairie View, TX 77446	vwwilliams@pvamu.edu
Williams, Verlynn E.	Office: 281-985-7363 Mobile: 832-387-9181	ADJUNCT College of Education – EL&C 15010 Aldine Westfield Road Houston, TX 77032	vewilliams@aldine.k12.tx.us

Prairie View A&M University – Northwest Houston Center
Emergency Exit and Stairs

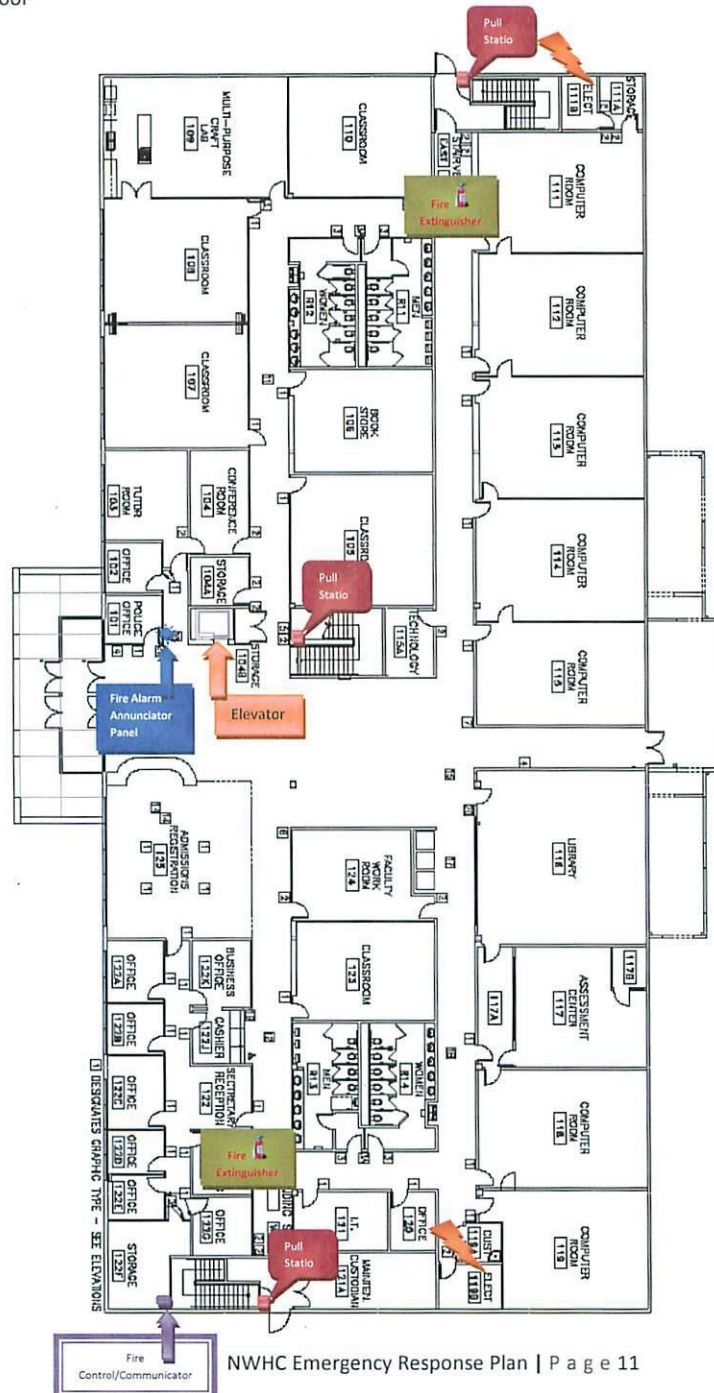


In case of an emergency always use the nearest stairs and exit. There are four **EXIT** doors from this building.



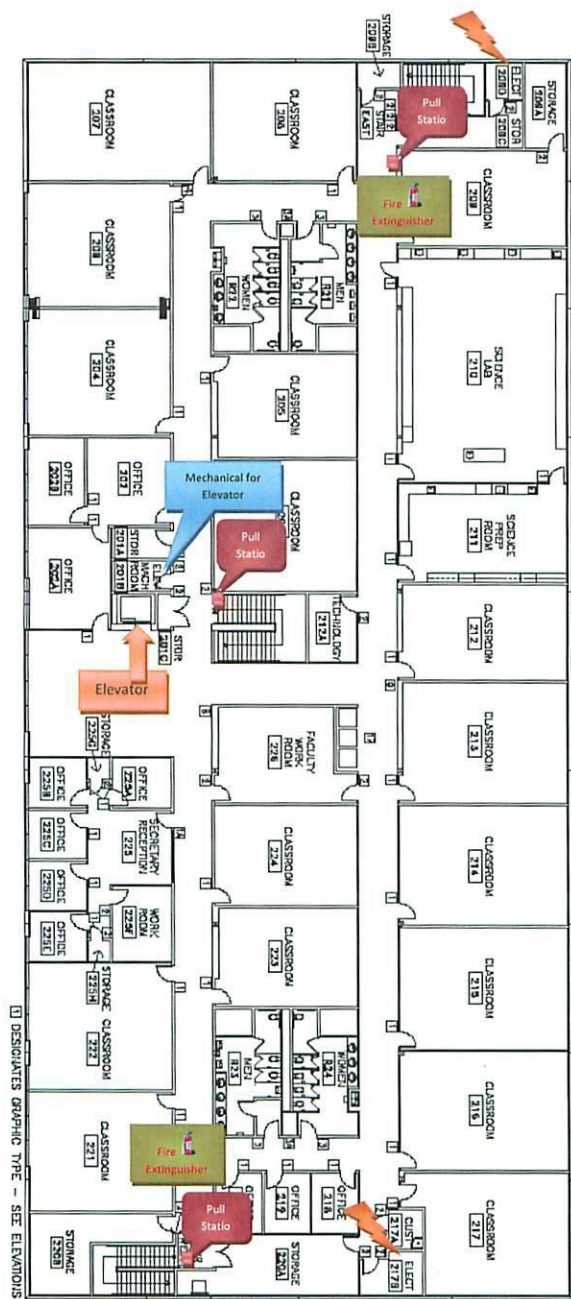
Northwest Graduate School Campus/ Northwest Houston Center (NWHC)
Emergency Preparedness (continued)

Prairie View A&M University- Northwest Houston Center
Fire Safety Component Locations
1st Floor



Northwest Graduate School Campus/ Northwest Houston Center (NWHC) Emergency Preparedness (continued)

Prairie View A&M University-Northwest Houston Center
Fire Safety Component Locations
2nd Floor



Houston Nursing School Campus

Emergency Preparedness (continued)

MISSION STATEMENT

To provide our students, faculty, and staff a directional system an safety for preparing for emergency natural and human caused disasters, such as hurricanes and local, state a national threats (hazardous materials, biological and chemical threats, radiological materials, and pandemic flu) in congruence with the Texas Medical Center and City of Houston Emergency Preparedness.

EMERGENCY PREPAREDNESS

A. Establishment of incident Command Center

1. College of Nursing Office of Security
2. College of Nursing Dean's Office
 - a. Ensure source of items, equipment, etc. on hand
 - i. Disaster Supply kits
 - ii. Sand bags and lift
 - iii. Generator operating
 - iv. Barricade of building entrance
 - v. Communication and Alert Systems for drive-through vehicle and parking

B. Establishment of Accountability and Safety of Students, Faculty and Staff

1. Verify enrollment and location of individuals
 - a. College facility
 - b. Clinical Agencies
 - c. Others
 - i. Special Transportation Registry
 - ii. Other

C. Establishment of Effective Communication (Internal)

1. Communication protocol with on-site staff
2. Communication protocol with staff, faculty and students away from site
3. Communication with the public per inquiries

D. Establishment of Effective Communication (External)

1. Communication protocol with Texas Medical Center Command Center
2. Communication protocol from Texas Medical Center on situational awareness with the City of Houston
3. Communication protocol to Prairie View A&M University Emergency Preparedness Command Center

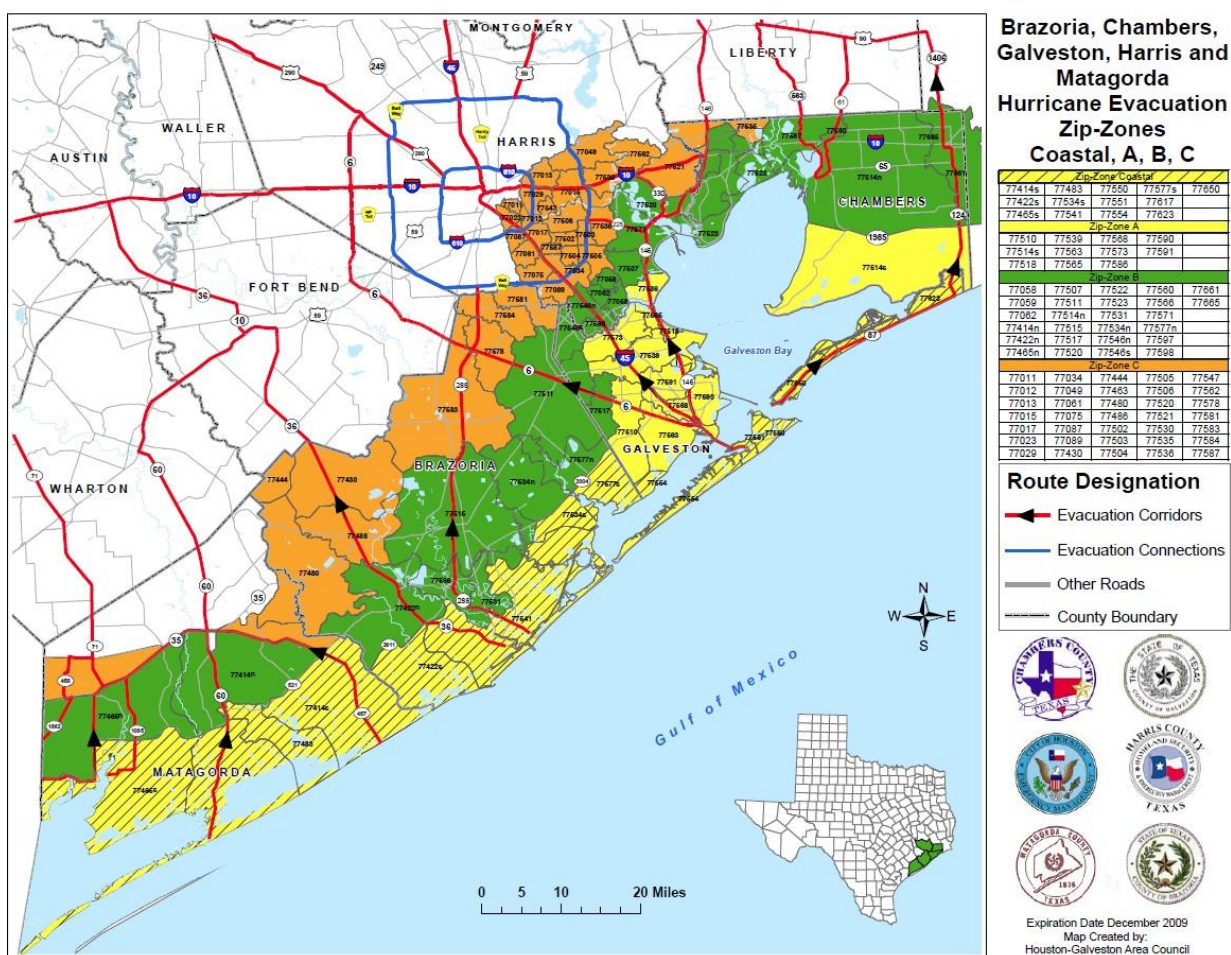
E. Establishment of an Effective Joint Information System

1. Communicate status of College of Nursing Incident Command Center
2. Contribute to the Joint Information Center as defined by the Texas Medical Center and City of Houston
3. Communicate protocol to Prairie View A&M University Emergency Preparedness

Houston Nursing School Campus

Emergency Preparedness (continued)

Emergency Evacuation Route Map



Houston Nursing School Campus

Emergency Preparedness (continued)

Emergency Contact Information

Name	Phone	Address	Mobile Number
Bill Wheeler Texas Medical Center Command Center	Center (713) 795-0000	www.impact_weather.com login button and type in "tmc" and password "triage"	(713) 591-0828
Nursing Security	713-790-7296	College of Nursing Prairie View A&M University 6436 Fannin Street Houston, TX 77030 email: Nsecurity@pvamu.edu	832-477-0919
John Stuart PVAMU Garage Parking Supervisor	Office: 713-790-7294 Office: 832-325-7655	College of Nursing Prairie View A&M University 6436 Fannin Street Houston, TX 77030 email: john.f.stuart@uth.tmc.edu	1-281-1382
White, Daron	Office 936-261-1746 FAX 936-261-1747	Safety Coordinator/Fire Marshall Prairie View A&M University PO Box 519 MS #1310 Prairie View, TX 77446	932-265-8205 (cell)
Adams, Betty N.	281-778-6261	PO Box 88354 Houston, TX 77288 email: bnadams@pvamu.edu	972-762-2191
Anderson, Veronica	281-208-8146	2031 Retriever Lane Missouri City, TX 77489 email: vfanderson@pvamu.edu	832-492-4046
Blake, John	281-499-7047	2510 Oak Hill Missouri City, TX 77459 email: joblake@pvamu.edu	713-927-6643
Briscoe, John		12430 Oxford Park Dr. Houston, TX 77082	469-360-465
Brown, Betty	281-481-5199	11547 Sageking Dr. Houston, TX 77089 email: blbrown@pvamu.edu	713-557-9141
Boyd, Terran	281-710-4443	4606 W. Thunderwood Circle Fresno, TX 77545 email: tjboyd@pvamu.edu	409-256-8898
Edwards, Crystal (Admin. Assistant)		2828 Walnut Bend Lane #231 Houston, TX 77042 email: cjedwards@pvamu.edu	832-527-5505
Goodman, Jennifer (Dir. Grad Program)	281-499-2571	12615 Grove Park Dr Missouri City, TX 77489 email: jjgoodman@pvamu.edu	832-428-1498
Hale, Lois (Admin. Assistant III)	713-864-3027	715 E. 321/2 Street Houston, TX 77022 email: lhale@pvamu.edu	281-773-6615
Washington, Philisie	Office: 713-797-7000 281-970-338	9202 Skipping Stone Lane Houston, TX 77064	713-828-4409 cell
Harvin, Shelia	713-794-0511	2121 Hepburn Houston, TX 77054 email: shharvin@pvamu.edu	713-720-1454 pager
Jenkins, Sandra	281-438-9244	3303 Cumberland Dr Missouri City, TX 77459 email: skjenkins@pvamu.edu	281-818-1956
Landson, Margie	281-265-0820	3022 Coachlight Lane Sugarland, TX 77479 email: mjlandson@pvamu.edu	832-654-7521

McClinton, Annette	281-354-3794	19351 Desna Dr Porter, TX 77479 email: almcclinton@pvamu.edu	832-233-5329
Rounds, Priscilla (Sen. Sec)		7066 greenway Chase Houston, TX 77072	832-499-1470
Smith, Forest	173-436-3161	13012 Ferry Cove Lane P.O. Box 84962 Pearland, TX 77584 email: fdsmith@pvamu.edu	713-409-5225
Smith, Isaac	281-487-2994	4223 Manordale Pasadena, TX email: ilsmith@pvamu.edu	832-922-1160 (cell) 832-388-7049
Solomon, Abida		P.O. Box 84524 Pearland, TX 77578 email: absolomon@pvamu.edu	832-403-6737
Thomas, Flora	281-373-5654	17615 Ranch Country Hockley, TX 77446 email: fythomas@pvamu.edu	832-922-5714
Ms. Dawn Burton (Cooperative Ext.)		23212 Rosedale Street Houston, TX 77004-6074 email: deburton@pvamu.edu	713-256-5319
Randle, Shelia (Cooperative Ext.)	281-897-9115	13314 Denver Oaks Dr Houston, TX 77065 email: shrandle@pvamu.edu Sheila.randle@agent.TAMU.edu	713-504-9715

Emergency Response and Evacuation Testing Procedures

An evacuation (fire) drill is coordinated by PVAMU EHSO (Environmental Health and Safety Office) for all residential facilities on PVAMU main campus. **The Northwest Campus and the PVAMU Houston School of Nursing do not have residential facilities.** A second drill is coordinated each year for some first-year Residence Halls and the more densely populated halls. Students learn the locations of the emergency exits in the buildings and are provided guidance about the direction they should travel when exiting each facility for a short-term building evacuation.

PVAMUPD does not tell residents in advance about the designated locations for long-term evacuations because those decisions are affected by time of day, location of the building being evacuated, the availability of the various designated emergency gathering locations on campus, and other factors such as the location and nature of the threat. In both short-term and long-term building evacuations, PVAMUPD and Residence Hall staff on the scene will communicate information to students regarding the developing situation or any evacuation status changes. The purpose of evacuation drills is to prepare building occupants for an organized evacuation in the case of a fire or other emergency. At PVAMU, evacuation drills are used as a way to educate and train occupants on fire safety issues specific to their building. During the drill, occupants 'practice' drill procedures and familiarize themselves with the location of exits and the sound of the fire alarm. In addition to educating the occupants of each building about the evacuation procedures during the drills, the process also provides the University an opportunity to test the operation of fire alarm system components. Evacuation drills are monitored by PVAMUPD, EHSO, and PVAMU Residence Hall Staff to evaluate egress and behavioral patterns. Recommendations for improvements are submitted to the appropriate departments/offices for consideration. Students receive information about evacuation and shelter-in-place procedures during their first floor meetings and during other educational sessions that they can participate in throughout the year. The House Staff members are trained in these procedures as well and act as an on-going resource for the students living in residential facilities.

Emergency Response (contd.)

EHSO conducts numerous announced and unannounced drills and exercises each year and conducts follow-through activities designed for assessment and evaluation of emergency plans and capabilities. PVAMU EHSO coordinates announced and unannounced evacuation drills each semester, as described above, to test the emergency response and evacuation procedures, and to assess and evaluate the emergency evacuation plans and capabilities.

Shelter-in-Place Procedures – What it Means to –Shelter-in-Place

If an incident occurs and the buildings or areas around you become unstable, or if the air outdoors becomes dangerous due to toxic or irritating substances, it is usually safer to stay indoors, because leaving the area may expose you to that danger. Thus, to -shelter-in-place means to make a shelter of the building that you are in, and with a few adjustments this location can be made even safer and more comfortable until it is safe to go outside.

Basic –Shelter-in-Place Guidance

If an incident occurs and the building you are in is not damaged, stay inside the building in an interior room until you are told it is safe to come out. If your building is damaged, take your personal belongings (purse, wallet, etc.) and follow the evacuation procedures for your building (close your door, proceed to the nearest exit, and use the stairs instead of the elevators). Once you have evacuated, seek shelter at the nearest University building quickly. If police or fire department personnel are on the scene, follow their directions.

How You Will Know to –Shelter-in-Place

A shelter-in-place notification may come from several sources, including PVAMUPD, Residence Hall Staff members, other University employees, the federal or WALLER COUNTY government, PVPD, or other authorities utilizing the University's emergency communications tools.

How to –Shelter-in-Place

No matter where you are, the basic steps of shelter-in-place will generally remain the same. Should the need ever arise, follow these steps, unless instructed otherwise by local emergency personnel:

The Prairie View A&M University Emergency Preparedness Information website, at <http://www.pvamu.edu/pages/6145.asp>, provides additional information and tips for individual emergency preparedness and a number of emergency brochures can be downloaded from the website, providing information on how to prepare for and respond to the most likely emergency situations that may arise on campus.

1. If you are inside, stay where you are. Collect any emergency shelter-in-place supplies and a telephone to be used in case of emergency. If you are outdoors, proceed into the closest building quickly or follow instructions from emergency personnel on the scene.

How to – Shelter-in-Place (continued)

2. Locate a room to shelter inside. It should be:
 - An interior room;
 - Above ground level; and
 - Without windows or with the least number of windows. If there is a large group of people inside a particular building, several rooms may be necessary.
3. Shut and lock all windows (tighter seal) and close exterior doors.
4. Turn off air conditioners, heaters, and fans.
5. Close vents to ventilation systems as you are able. (University staff will turn off the ventilation as quickly as possible.)
6. Make a list of the people with you and ask someone (House Staff, faculty, or other staff) to call the list in to PVAMUPD so they know where you are sheltering. If only students are present, one of the students should call in the list.
7. Turn on a radio or TV and listen for further instructions.
8. Make yourself comfortable.



Campus Emergency Response and Immediate Warning

In case of an emergency, Prairie View A&M University wants to protect its greatest assets, our students, faculty and staff. To keep the PVAMU campus communities informed in the event of an emergency, the University has established the Panther Alert System. The system, will notify the campus community of emergency situations (severe weather, serious threats to safety, etc.) via phone, text messages, and e-mails. Students, faculty and staff members are responsible for keeping their contact information current. Prairie View A&M University firmly believes that all students, faculty, staff, visitors and community are entitled to the most up-to-date and accurate warnings when a serious emergency occurs on campus. A variety of methods are used such as, text messaging, email, LED signage, postings and verbal announcements, the University will immediately alert the campus community upon confirmation of a significant emergency or dangerous situation which involves an immediate threat to the health or safety of students, faculty, staff and community members on campus. Information which is deemed to be compromising to efforts to contain the emergency may be withheld from the public. The emergency warning system shall be tested on an annual basis in the event that it was not activated for any real emergency situation in the interim. More information on the Panther Alert System is available at www.pvamu.edu/PAS. There is also a powerpoint presentation tutorial at http://www.pvamu.edu/Include/PAS/Instructions/PAS_Instructions_Faculty_Staff.pdf. Additionally, the university Emergency Operations plan is available from the Environmental Health and Safety Department:

www.pvamu.edu/Include/EHS/Emergency%20Preparedness/Emergency%20Operations%20Plan%202008.doc

Additionally, you may access more information on the university's Emergency Preparedness web page at www.pvamu.edu/pages/5445.asp

FIRE SAFETY AT PVAMU

University College - American Campus Communities

The Environmental Health & Safety Office prepared the information and procedures regarding fire safety for all students, faculty, staff and visitors to the campus of Prairie View A&M University. The information provided is intended to serve as a guide to fire safety. However, additional safety measures may be necessary under certain circumstances.

- Fire warning devices and safety equipment are to be used in case of emergency. The sounding of a fire alarm should be taken seriously. In the event of an alarm, tenants should proceed in accordance with the instructions posted in and about University College. The intentional sounding of an alarm outside of an emergency situation is a criminal offense and a material breach of the Lease Agreement. At lease commencement, Landlord will test the smoke detectors in premises (room) for proper operation and working batteries. Upon notification by resident owner will replace battery.
- Tampering or altering the smoke detector will result in a \$25.00 fine. Any violation is a default under the Lease which would entitle Landlord to declare a default and pursue all remedies provided to Landlord. Fire code prohibits storage or use of barbecue grills in or on any building, walkway, stairway or balcony. Grills found on the premises will be disposed of by landlord. Microwaves, refrigerators, hot plates and other heat producing appliances are **specifically prohibited** except those provided in the room.

The use of candles, burners and other objects with an open flame in non-kitchen areas are specifically prohibited

- Some small appliances, such as radios, televisions and irons are permitted. **Space heaters and other heating devices present a fire hazard and are prohibited.** No incense or other odor producing items shall be used in or about the Premises.
- **Smoking is not allowed** in any interior areas including bedrooms, hallways, lobbies, stairwells, bathrooms or any other areas.

FIRE SAFETY AT PVAMU

University College - American Campus Communities (continued)

Emergency Fire Procedures

If you are involved in an emergency fire situation on University College Property, implement the four steps **FIRE Procedure**:

Find: If you see or smell smoke investigate. You should try to determine the extent (wastebasket, or entire wing of the building, etc.) Type (paper, electrical, etc.) And location of the fire.

Initiate: Alert the people in the vicinity to the danger as quickly as possible. Pull the Fire Alarm station and ask other people to assist in the evacuation of the building. Never try to control a fire before other people in the building and university police have been notified.

Report: Instruct someone to call university police at extension **4-911** or Dispatch office at **936-261-1375**. If you are alone, call university police prior to any attempt at extinguishing the fire.

Extinguish or evacuate! If the fire cannot be extinguished - **EVACUATE!** Use the stair well to exit the building. As you exit the building, close as many doors as possible. Closed doors act as fire barriers. Once outside, move to a safe meeting place away from the fire fighters and police. Tell the fire department if anyone is left in the building. Stay outside the building until the fire department has indicated that the building is safe to enter.

Fire Safety Education/Training

The Environmental Health & Safety Department (EHSD) is responsible for conducting ongoing fire prevention activities, including oversight of fire detection, response, and safety, and for providing liaison with outside agencies on matters relating to life and fire safety issues. The EHSD reviews construction and remodeling plans and monitors construction progress to ensure that life and fire safety requirements are adequately implemented. The EHSD performs periodic walk-through inspections of all PVAMU facilities at all campus locations. The EHSD also assist with the establishment of evacuation plans, conducts fire drills which include evacuation of the buildings, responds to alarms and systems, conducts fire investigations, trains and assists fire response personnel with the facility floor plan, provides fire safety and fire extinguisher training, and provides special assistance during fire alarms or other emergencies.



RESIDENTIAL FACILITIES

University College

PVAMU Residential Facilities	Fire Alarm Monitoring by PVAMU PD	Partial Sprinkler System	Full Sprinkler System	Smoke Detectio	Fire Extinguisher Devices	Fire Extinguishers Per Floor	Evacuation Plans/Placards	# of Fire Drills each Academic Year	# of Residents
Building 35	N	N	Y	Y	N	0	Guidelines, Building Map	2	102
Building 36	N	N	Y	Y	N	0	Guidelines, Building Map	2	102
Building 37	N	N	Y	Y	N	0	Guidelines, Building Map	2	102
Building 38	N	N	Y	Y	N	0	Guidelines, Building Map	2	102
Building 39	N	N	Y	Y	N	0	Guidelines, Building Map	2	102
Building 40	N	N	Y	Y	N	0	Guidelines, Building Map	2	102
Building 41	N	N	Y	Y	N	0	Guidelines, Building Map	2	102
Building 42	N	N	Y	Y	N	0	Guidelines, Building Map	2	102
Building 43	N	N	Y	Y	N	0	Guidelines, Building Map	2	102
Building 44	N	N	Y	Y	N	0	Guidelines, Building Map	2	102
Building 45	N	N	Y	Y	N	0	Guidelines, Building Map	2	102
Building 46	N	N	Y	Y	N	0	Guidelines, Building Map	2	102
Building 47	N	N	Y	Y	N	0	Guidelines, Building Map	2	102
Building 48	N	N	Y	Y	N	0	Guidelines, Building Map	2	102

PVAMU RESIDENTIAL FACILITIES *continued***University Village I******Fire Alarms are monitored by AFS Security Company**

PVAMU Residential Facilities	Fire Alarm Monitoring by PVAMU PD	Partial Sprinkler System	Full Sprinkler System	Smoke Detection	Fire Extinguisher Devices	Fire Extinguishers Per Floor	Evacuation Plans/ Placards	# of Fire Drills each Academic Year	# of Residents
Clubhouse 1	**	N	Y	Y	Y	N/A	guidelines	2	0
Building 1	**	N	Y	Y	Y	1 per room	guidelines	2	72
Building 2	**	N	Y	Y	Y	1 per room	guidelines	2	72
Building 3	**	N	Y	Y	Y	1 per room	guidelines	2	72
Building 4	**	N	Y	Y	Y	1 per room	guidelines	2	72
Building 5	**	N	Y	Y	Y	1 per room	guidelines	2	72
Building 6	**	N	Y	Y	Y	1 per room	guidelines	2	96
Building 7	**	N	Y	Y	Y	1 per room	guidelines	2	72
Building 8	**	N	Y	Y	Y	1 per room	guidelines	2	72
Building 9	**	N	Y	Y	Y	1 per room	guidelines	2	72
Building 10	**	N	Y	Y	Y	1 per room	guidelines	2	72

University Village II****Fire Alarms are monitored by AFS Security Company**

PVAMU Residential Facilities	Fire Alarm Monitoring by PVAMU PD	Partial Sprinkler System	Full Sprinkler System	Smoke Detection	Fire Extinguisher Devices	Fire Extinguishers Per Floor	Evacuation Plans/ Placards	# of Fire Drills each Academic Year	# of Residents
Clubhouse 11	**	N	Y	Y	Y	N/A	guidelines	2	0
Building 12	**	N	Y	Y	Y	1 per room	guidelines	2	72
Building 13	**	N	Y	Y	Y	1 per room	guidelines	2	72
Building 14	**	N	Y	Y	Y	1 per room	guidelines	2	48
Building 15	**	N	Y	Y	Y	1 per room	guidelines	2	48
Building 16	**	N	Y	Y	Y	1 per room	guidelines	2	48
Building 17	**	N	Y	Y	Y	1 per room	guidelines	2	72
Building 18	**	N	Y	Y	Y	1 per room	guidelines	2	72
Building 19	**	N	Y	Y	Y	1 per room	guidelines	2	72
Building 20	**	N	Y	Y	Y	1 per room	guidelines	2	72

University Village III-V

****Fire Alarms are monitored by AFS Security Company**

PVAMU Residential Facilities	Fire Alarm Monitoring by PVAMU PD	Partial Sprinkler System	Full Sprinkler System	Smoke Detection	Fire Extinguisher Devices	Fire Extinguishers Per Floor	Evacuation Plans/ Placards	# of Fire Drills each Academic Year	# of Residents
Clubhouse 22	**	N	Y	Y	Y	N/A	guidelines	2	0
Building 23	**	N	Y	Y	Y	1 per room	guidelines	2	72
Building 24	**	N	Y	Y	Y	1 per room	guidelines	2	72
Building 25	**	N	Y	Y	Y	1 per room	guidelines	2	72
Building 26	**	N	Y	Y	Y	1 per room	guidelines	2	48
Building 27	**	N	Y	Y	Y	1 per room	guidelines	2	48
Building 28	**	N	Y	Y	Y	1 per room	guidelines	2	48
Building 29	**	N	Y	Y	Y	1 per room	guidelines	2	48
Building 30	**	N	Y	Y	Y	1 per room	guidelines	2	48
Building 31	**	N	Y	Y	Y	1 per room	guidelines	2	48
Building 32	**	N	Y	Y	Y	1 per room	guidelines	2	48
Building 33	**	N	Y	Y	Y	1 per room	guidelines	2	48
Building 49	**	N	Y	Y	Y	1 per room	guidelines	2	72
Building 50	**	N	Y	Y	Y	1 per room	guidelines	2	72

FIRE SAFETY INSPECTION PROGRAM

Prairie View A&M University conducts several levels of fire and life safety inspections in all of our residence facilities. The annual Fire Safety Report may be accessed at: <http://www.pvamu.edu/ehs> for complete and detailed information regarding fire safety on campus. Inspections are done by the American Campus Community staff on a routine or as needed basis along with maintenance personnel during repair operations. PVAMU EHS personnel perform inspections in conjunction with fire drills and as requested by students or ACC personnel. In addition, the University Physical Plant conducts inspections, testing, and maintenance of fire safety equipment in compliance with the requirements of the National Fire Protection Association.

Residence Halls

Monthly Inspections – Each month, ACC staff conduct egress area fire safety inspections. These areas include corridors, stairways, and exit paths.

Pre-Occupancy Inspections – Prior to occupancy of residence halls each fall, spring and summer semester, a more in-depth inspection is conducted. These inspections include all common areas, mechanical, electrical, and custodial areas within each building as well as exit paths outside of the facilities.

Annual Inspections – Once each calendar year, a complete fire and life safety inspection is conducted by American Campus Community in conjunction with Environmental Health and Safety.

The intent of these inspections is to increase the level of safety and safety awareness for all occupants of the residence halls. These inspections include residence hall rooms and staff offices as well as mechanical and common areas. Inspections begin around the third week of the fall semester and will continue until all residence halls have been inspected. Inspections will be conducted in the presence of a residence hall staff member. Safety practices in general and the Fire Life safety rules found in the rules section will be the primary focus of the inspection. These inspections will look for such items as:

- **Electrical:** Use of extension cords, cover plate missing/damaged, electrical wiring frayed/damaged/crimped, multi adapter without breaker in use, prohibited/unapproved appliances
- **Fire Alarm Equipment:** smoke detector obstructed (min. 24" clearance), smoke detector damaged
- **Lofts:** being less than 30" from the ceiling, being of poor construction
- and/or being placed in an unsafe/unapproved location
- **Ignition Sources/Combustible Products:** candles/incense being present in the room, flammable liquids in the room, combustible materials near electrical source and excessive fire load in the room.
- **Emergency Planning:** absence of the evacuation plan on the back of the room door, window/door obstructed
- **Miscellaneous:** poor housekeeping, floor/wall/ceiling penetrations, and the door closure missing/damaged.

REPORT CONTACT INFORMATION

For purposes of including fire statistics in the annual fire safety report, employees and students should report all instances that a fire occurred in on-campus student housing to the individuals listed below. These individuals also can provide additional information about this report.

Aaron N. R. Scheffler

Director, Environmental Health & Safety

(936) 261-1745

ANSCHOFFLER@PVAMU.EDU

Daron White

Safety Compliance Associate

Environmental Health & Safety

(936) 261-1746

DAWHITE@PVAMU.EDU

Ester A. Chalmers

Environmental Health & Safety Officer

(936) 261-1743

EACHALMERS@PVAMU.EDU

Fire Logs Definition

The fire logs are a chronological list of fires that occurred in PVAMU Residence Halls during the listed year. The logs list the Date, Time, Incident Number, and General Location, Nature of Incident, Cause, Number of Deaths, Number of Injuries Treated, and Dollar loss.

Fire: Any instance of open flame or other burning in a place not intended to contain the burning or in an uncontrolled manner.

Cause of Fire: The Factor or factors that give rise to a fire. The casual factors may be but is not limited to the result of intentional or unintentional action, mechanical failure or act of nature.

Fire Related Injury: Any instance in which a person is injured as a result of a fire, including any injury sustained from a natural or accidental cause while involved in fire control, attempting rescue, or escaping from dangers of the fire. The term person may include students, employees, visitors, firefighters, or any other individuals.

Fire Related Death: Any instance in which a person is killed as a result of a fire, including death resulting from a natural or accidental cause while involved in fire control, attempting rescue, or escaping from dangers of fire. Dies within 1 year of injuries sustained as a result of the fire.

Fire Logs Access: _____ Prairie View A&M University maintains a fire log that is available to the public. The Fire log is maintained in the Environmental Health & Safety Department in the Harrington Science Building room 102 and is accessible to the public. You may contact the Environmental Health & Safety Department at (936)261-1745 by phone or email at EHS@pvamu.edu.

PVAMU RESIDENCIAL SERVICES/AUXILIARY SERVICES

At the beginning of each semester, building meetings are held with the residents to discuss safety issues. The Residence Hall Handbook is given to each resident along with the police department conducting safety and educational sessions. Such topics discussed during the sessions include: familiarizing new residents with campus law, personal safety on and off campus, Resident Survival Skills Workshops and Class Action -College Students and Texas Law. As an added Environmental Health & Safety awareness measure, the Prairie View A&M University Community Police officers are the -eyes and ears in the residence hall areas. During the peak hours, the Community Police Officers are detailed to the residential halls to enforce housing regulations, state and local laws, and report safety hazard conditions.

University College www.universitycollege-pv.com 936-261-5994

University Village www.prairieviewuvillage.com 936-261-5963

Department of Residence Life: Residence_life@pvamu.edu 936-261-2654

Main Telephone Number: 936-261-1700

Mr. Clarence Wolf, Student Service Manager (936) 261-2651 (Residence Life liaison for Auxiliary Enterprises)

Education of Members in the University Community

Prairie View A&M University Department of Public Safety is -Community Policing Oriented and uses a variety of crime prevention methods that also serve as early intervention programs. The department's belief is that the key to preventing crime is "Awareness and Educational Programs." The police department provides safety seminars and educational programs by police officers throughout the year in collaboration with Student Activities, Residential Life, New Student Orientation and the University's Counseling Center. The programs and seminars presented include Drugs/Alcohol, Driving Under the Influence (DUI), Rape Prevention, and Campus Environmental Health & Safety. A special session are held during freshman orientation to familiarize new students with campus law and personal safety on and off campus. The Department continues to pro-actively approach crime prevention through community policing efforts designed to enhance personal safety and help campus community members develop self-esteem, which contributes to a healthy community. All officers will continue to focus on crime prevention and early intervention programs on campus and throughout the surrounding communities.

The police department is available to assist campus departments and community organizations in planning, presenting and coordinating activities and programs. Below are some of the programs presented by the Prairie View A&M University Department of Public Safety:

Operation P. V. Identification- A program designed to reduce theft on the Prairie View A&M University Campus. It involves engraving property with a unique identifier so that property can be easily returned if lost or stolen.

Community Policing Officer Program- A program in which police officers are assigned to resident halls to enforce housing regulations, and state and local laws, as well as to report safety hazard conditions. The officers are -eyes and ears in the residence halls. The Officers are involved in the Environmental Health & Safety surveys of the campus buildings and grounds, crime prevention seminars, problem solving, customer service, distribution of campus Environmental Health & Safety literature.

Escort Service - Faculty, staff and students are encouraged to request an escort to their vehicles when working late night hours. The services rendered by the Department of Public Safety Patrol service has played an important part in the increased visibility in buildings and on the grounds during the most demanding hours for services on the campus. Providing this vital service is a proactive measure of preventing crime against persons on the grounds and in our campus buildings.

Forum on "The Prevention Of Alcohol Abuse"- A program focused on binge drinking on and off campus, alcohol poisoning, alcohol related sexual assault, substance abuse and consequences of alcohol related offenses. The students participate in an alcohol-sensor demonstration and the fatal vision goggle demonstration. A software presentation of -Alcohol 101 is presented. The program was created to reduce the harm associated with misuse of alcohol. The program provides the physiological, psychological and legal information to college students to help make responsible decisions about drinking, as well as non-drinking. This activity serves as an alcohol awareness campaign utilizing the student newspaper (The Panther), alcohol posters, pamphlets, brochures, handouts, bookmarks, and banners. Throughout the year, the Community Police Officers serve as program facilitators on crime prevention/safety upon request by campus organizations, clubs and professional organizations on and off campus.

Victim Assistance Services

If a PVAMU community member becomes the victim of a crime, the PVAMUPD Coordinator of Victim Services & Educational Initiatives offers direct services, assistance, and referrals. The Coordinator provides assistance to victims/survivors of a crime by assisting them in obtaining the services they need to work through and better understand their options. The PVAMUPD Coordinator works closely with other University offices and Waller County agencies to assist the victim in receiving effective, comprehensive services and compassionate responses.

In addition, PVAMUPD officers offer information and guidance to victims when they file a PVAMUPD report and there is a significant amount of victim services information available on the PVAMUPD website.

Responsibilities of the University Community

Members of the University community must assume responsibility for their own personal safety and the security of their personal property. The following precautions provide guidance.

1. Report all suspicious activity to PVAMUPD immediately.
2. Never take personal safety for granted.
3. Try to avoid walking alone at night. Use the PVAMUPD escort service.
4. Limit your alcohol consumption, and leave social functions that get too loud, too crowded, or that have too many people drinking excessively. Remember to call PVAMUPD or PVPD for help at the first sign of trouble.
5. Carry only small amounts of cash.
6. Never leave valuables (wallets, purses, books, phones, etc.) unattended.
7. Carry your keys at all times and do not lend them to anyone.
8. Lock up bicycles and motorcycles. Lock car doors and close windows when leaving your car.
9. Always lock the door to your residence hall room, whether or not you are there. Be certain that your door is locked when you go to sleep, and keep windows closed and locked when you are not at home.
10. Do not leave valuables in your car, especially if they can be easily noticed.
11. Engrave serial numbers or owner's recognized numbers, such as a driver's license number, on items of value.
12. Inventory your personal property and insure it appropriately with personal insurance coverage.

Missing Students Notification Policy

If a member of the University community has reason to believe that a student who resides in campus housing is missing, he or she should immediately notify DPS at 936-261-1375. DPS will generate a missing person report and initiate an investigation. Prairie View A&M University request that all new students voluntarily provide emergency contact information to Housing at the beginning of each year.

In addition to registering an emergency contact, students residing in on-campus housing have the option to complete a Guarantor Data sheet to be used in the event the student is determined to be missing. This information will be accessible only to authorized campus officials and will not be disclosed except to law enforcement personnel in furtherance of a missing person investigation. Prairie View A & M must notify a custodial parent or guardian within 24 hours of the determination that a student is missing if the student is under the age of 18 and not emancipated. Any additional contact person designated by a student under the age of 18 will also be notified.

If a Prairie student living in university-operated housing is suspected to be missing from campus, the information should be immediately reported to a residence hall staff member (i.e. residence hall coordinator) or the University Police Department (DPS) by the notifying individual. The DPS will generate a missing person report and initiate an investigation. Steps in the process of determining if a student from the university-operated housing is missing include the following:

1. Housing personnel will immediately check the assigned room to determine if the student is present;
2. Housing personnel will obtain the secured Emergency Contact Data sheet information and will attempt to contact the student via their personal cell phone;
3. Housing personnel will attempt to contact the student at all applicable numbers available from the Emergency contact Personal Data sheet.
4. Housing personnel will contact the DPS if none of the above three items result in contacting the student in a reasonable timely manner;
5. Housing personnel will contact the Emergency Contact designee of the student if advised to do so by the DPS. All reports of missing students made to the residence hall staff and or/ the DPS will be investigated.

If the investigation determines that the student is missing, the university will:

- Notify the individual identified as the student's emergency contact person;
- Notify a parent or guardian, if the student is under 18 years of age; and
- DPS will enter the student in the National Missing person system (OMNIX)

Alcohol and Other Drug Policy

Prairie View A&M University requires all students, faculty, and staff to adhere to the established federal, state and local laws and regulations regarding alcohol and drugs. The Substance Abuse Policy clearly states: -The use, manufacture, distribution (including selling), or possession of alcohol and other drugs on the University campus is prohibited. Prairie View A&M University is committed to a drug free workplace and educational environment.

University administrators, supervisors, and University police are charged with the enforcement of this policy. Both student and employees are subject to prosecution under applicable state or federal laws.

Alcohol and Other Drug Policy *continued*

Prairie View A&M University Department of Public Safety does and will continue to cooperate with federal, state, local and other law enforcement agencies to enforce statutes governing illegal involvement with drugs and violations of state liquor laws including underage drinking.

These are criminal offenses and will be treated accordingly. Prairie View A&M University reserves the right to permanently dismiss any student or terminate any employee whose continued presence on campus and in the community constitutes a risk to the health, safety, or general well-being of the University community or themselves. As a deterrent to alcohol and other drug use and abuse, the University supports, promotes and sponsors programs to enhance student, faculty, and staff awareness of the devastating effects and consequences of indulging in the use and abuse of alcohol and other drugs. Literature on alcohol and other drug use is distributed to students, faculty, and staff.

In accordance with federal, state and local law, the following items are considered priorities regarding alcohol and other drug use:

- To inform students, faculty and staff that alcohol use is prohibited on campus.
- To provide educational programming to allow people to make informed choices regarding alcohol and other drug use when off campus; including choosing not to drink if you are underage.
- To provide students with appropriate and confidential counseling for alcohol and drug related issues.
- To vigorously support students who choose to adhere to Prairie View A&M University's alcohol and drug policy as well as federal and state laws regarding alcohol and other drug use.

The Prairie View A&M University Department of Public Safety encourages all students, faculty and staff to read the University's alcohol, and drug policy located in the Student Handbook. The Prairie View A&M University Department of Public Safety assists the counseling center with seminars and workshops in the residence halls and orientation classes. The seminars and workshops are designed to prevent alcohol and other drug use and abuse. In keeping with the spirit of the Attorney General's Task Force Report on Drinking by College Students, the Prairie View A&M University Department of Public Safety has developed a coalition with the Prairie View Police Department and the local Alcoholic Beverage Control Board.

Appointments, Referrals & Emergency Services

Appointments may be scheduled in person or by phone during office hours. To schedule an appointment for personal counseling, call **(936) 261-3564**. Student Counseling Services is open Monday through Thursday, from 8 a.m. to 6:00 p.m. On Friday, from 8 a.m. to 5:00 p.m., and on Saturdays, from 9:00 a.m. – 2:00 p.m.

Emergency Services

Members of Student Counseling Services is a part of the Behavioral Intervention Team and the Sexual Assault Response Team for PVAMU students. During regular university hours, the Student Counseling Service's staff is available for crisis counseling.

For after-hours emergencies, an on-call counselor will be available by calling the crisis hotline number or you may call the PVAMU Police Department at **936-261-1375** or **4-911**, or visit the Emergency Room at the closest hospital.

Important Telephone Numbers

- Student Counseling Services (SCS) 8:00 a.m. – 5:00 p.m./ M-F
936-261-3564
- PVAMU Police Emergency (DPS) 24 Hour assistance:
936-261-1375 or 4-911
- DPS Anonymous TIPS Line B
- Owens-Franklin Health Center (OFHC) 9:00-6:00/M-F
936-261-1400
- Behavioral Intervention Team (BIT)
936-261-3564
- Sexual Assault Response Team (SART)
- Houston Crisis Hotline 24 Hour Assistance:
713-228-1505
- County Crisis Hotline 24 Hour Assistance:
1-800-633-5686
- Focusing Families Crisis Line:
979-826-0000

Individual Responsibility

Prairie View A&M University stresses the responsibility of each community member to abide by the terms of the State of Texas and Prairie View A&M University's substance abuse policy. Prairie View A&M University encourages students, faculty and staff with concerns about their difficulty in dealing with alcohol and/or drug abuse to inquire about confidential/and medical support on and off campus.

Firearms and Weapons Policy

PVAMU is committed to maintaining a safe and secure environment that supports the academic mission of the University. According to the PVAMU Weapons policy, Explosives, Fire Arms or Weapons including storage or display on campus, or at activities sponsored by the University, is prohibited, including explosives, pistols, revolvers, rifles, shotguns, bb or pellet guns, slingshots, martial arts devices, knives, clubs or any missile projecting weapon. Facsimiles and dancing canes may not be used in a manner that is injurious or dangerous to others.

If you are aware of someone in possession of a prohibited item and have not reported it to the proper authorities, you are also in violation of the Code of Student Conduct which can be found on page eleven (11) of **the Student Conduct Code Handbook** on the university web site at:

http://www.pvamu.edu/Include/Student_Code/Student%20Conduct%20Code%20Procedures.pdf

Emergency Medical Response Procedures

On the main campus of Prairie View A&M University, students, faculty, staff, and guests should report any emergency medical situations to PVAMUPD immediately at extension **(936) 261-1375** or, from outside the University phone system, **911** or **(936) 261-1375**. The PVAMUPD dispatcher will send PVAMUPD officers and (if on duty) on-call members of the Waller County EMT unit will be dispatched to the scene, including campus coverage and special events. **Northwest Campus** should immediately **call 911** for emergency medical situations. Additionally, **the Houston School of Nursing** should also immediately call **911** in the event of an emergency medical incident.

SEXUAL ASSAULT AWARENESS AND EDUCATION POLICY

Prairie View A&M University is committed to maintaining a learning and work environment that is free of the threat of unwelcome and unwanted sexual actions. Sexual Assaults are serious violations of the federal and state law, as well as the University's Student Judicial Code, faculty Standards, and University employee policies.

The University prohibits sexual offenses in any form. It is unacceptable behavior and sexual offenders will not be tolerated. It is the University's responsibility to make every effort to see that the victim of a reported sexual assault is offered medical and psychological care and counseling. The use of threats, force or intimidation to engage in sexual intercourse or other sexual contact against the victim's will is illegal in the State of Texas. They are crimes under state laws that are punishable by fines and/or imprisonment. In addition, these actions are subject to civil suit for damages.

Violation of the policy prohibiting sexual assault may lead to disciplinary actions, including reprimands, suspension, termination of employment or academic status as well as possible **criminal prosecution**. Sexual assault offences are classified as follows:

Sex Offenses--Forcible

Any sexual act directed against another person, forcible and /or against that person's will; or not forcible or against the person's will where the victim is incapable of giving consent.

Forcible Rape ----The carnal knowledge of a person, forcibly and/or against that person's will; or not forcibly or against the person's will where the victim is incapable of giving consent because of his/her temporary or permanent mental or physical incapacity (or because of his/her youth).

Forcible Sodomy--Oral or anal sexual intercourse with another person, forcibly and/or against that person's will; or not forcibly against the person's will where the victim is incapable of giving consent because of his/her temporary or permanent mental or physical incapacity.

Sexual Assault With An Object— The use of an object or instrument to unlawfully penetrate, however slightly, the genital or anal opening of the body of another person, forcible and/or against that person's will; or not forcible or against the persons will where the victim is incapable of giving consent because of his/her youth or because of his/her temporary or permanent mental or physical incapacity.

Forcible Fondling— The touching of the private body parts of another person for the purpose of sexual gratification, forcible and/or against that person's will; or, not forcible or against the person will where the victim is incapable of giving consent because of his/her youth or because of his/her temporary or permanent mental or physical incapacity.

SEXUAL ASSAULT AWARENESS AND EDUCATION POLICY *continued*

Sex Offenses-Non-forcible

Unlawful, non-forcible sexual intercourse.

Incest—Non-forcible sexual intercourse between persons who are related to each other within the degrees wherein marriage is prohibited by law.

Statutory Rape— Non-forcible sexual intercourse with a person who is under the statutory age of consent.

Facts about Sexual Assault

SEXUAL ASSAULT IS: As defined by the Texas Penal Code, a stranger or acquaintance commits sexual assault if forcible sodomy, forcible sexual penetration, however slight, of another person's mouth, genital opening with any object. These acts must be committed without the victims consent either by force, threat of force or violence, intimidation or through the use of the victims mental or physical helplessness of which the accused was aware or should have been aware.

Sexual Assault is nonconsensual acts involving psychological manipulation, physical force, and coercion. It is an act of aggression and violence, and a crime punishable under the laws of the State of Texas by fines and incarceration ranging from two years to life in prison.

The Prairie View A&M University's definition of sexual assault also includes any touching of an unwilling person's intimate parts (defined as genitalia, groin, breast or breasts, buttock or clothing covering them) or forcing an unwilling person to touch another's intimate parts. Acts must be committed either by force, threat, intimidation, or through the use of the victims mental or physical helplessness of which the accused was aware or should have been aware.

Administrative Sanctions

Rape, Acquaintance rape, or other sex offenses (forcible or non-forcible) are violations of university policy. The Prairie View A&M University is committed to eradicating these behaviors and will not tolerate them. Following an on campus disciplinary proceeding, sanctions may be imposed on faculty, staff or students found in violation of university policy, which may result in separation from the university. Refer to the Faculty, Staff and Student handbooks for a complete range of sanctions. The PVAMU has established disciplinary procedures which address cases of alleged sexual assault committed by faculty, staff or students. Include in these procedures are statements that:

The accuser and the accused are entitled to the same opportunities to have others present during a campus disciplinary proceeding; and both the accuser and the accused shall be informed of the outcome of any campus disciplinary proceeding brought alleging a sexual assault.

Campus authorities are available to provide assistance in changing academic and living situations after an alleged sexual assault if requested by the victim and if these changes are reasonably available.

Reporting a Sexual Assault

If you are sexually assaulted you are encouraged to call the police immediately. Our emergency number is on an on-campus land line: 4-911 or dial **936-261-1375** or utilize any on campus emergency information call box or Blue telephone. If the incident occurred off campus, PVAMU is willing to coordinate notification to the appropriate law enforcement agency where the incident occurred. Note: when contacting the police, advise them if the suspect is still in the area and if any weapons were involved.

If you are victimized:

1. Get to a safe place as soon as you can. Go to the nearest lighted public place.
2. Don't change clothes, shower, bathe, or douche. Physical evidence is needed in court such as hair, blood types, seminal fluids, scrapings of flesh from the victim's nails.
3. Protect the crime scene. If the attack did not occur in your residence, try to recall the area you were taken so the officers can recover evidence left at the scene.
4. Get medical attention as soon as possible. A medical examination will provide any necessary treatment and collect important evidence. Injuries may not be immediately apparent.

The contact numbers are:

Focusing Families (Hempstead, TX) 24-Hour Hotline #:	(800) 799-7233
During business hours :	(979)-823-0000
National 24-Hour Sexual Assault Hotline Number :	(800) 656-4673
PVAMU Office of Student Conduct :	(936) 261-3554

5. **Campus authorities**, including RA's, nurses, counselors, staff supervisors, or department heads, may assist in notifying authorities, if you wish.
6. It is critical for the police agency to be informed as soon as possible after the incident so that appropriate steps, such as gathering of crucial evidence and information, can be taken.

It is always a survivor's choice as to whether or not to report a sexual assault, but reporting an assault (or an attempted assault) is extremely important for the protection of both the victim and the community. Reporting an assault does not mean that the survivor must prosecute. However, it does begin the legal process if the survivor decides to prosecute at a later date. The survivor has the option of requesting a concealed identity or pseudonym during the investigation. Talk with counselors who will maintain confidentiality, help explain your options, give you information, and provide emotional support.

Contact someone you trust, a close friend or a resident assistant, to be with you and support you. This person may accompany you to the hospital or the police station if you wish. An advocate from the Women's Center Rape Crisis program can be requested through the emergency room staff.

Pursue charges against the assailant. You may seek criminal prosecution, file charges through the university Judicial process (student life referral via Dean of Studies Office, or sexual harassment charge), or file a civil suit.

You may have rights to compensation and financial assistance, if you report the incident to the police.

Write down what happened, in your own words, to help you better remember if you decide to press charges.

If you are victimized (continued):

Identification Needed By Police

Practice being observant so that if you are attacked you will be able to describe and identify the assailant.

About Self Protection

If you sense danger of sexual assault, try to avoid confrontation. If you can't avoid confrontation, your own imagination and initiative are your best defenses. In any assault situation the most important thing to remember is to remain calm and avoid being isolated with the attacker. Immediately attempt to leave the scene and go to the nearest lighted public place. You may wish to attempt verbal or physical resistance.

Verbal Resistance

If the attacker has a weapon you may decide to use verbal resistance. There are many ways to use your voice to protect yourself. Trust your feeling about whether yelling or talking calmly would help you the most.

Physical Resistance

- The goal of physical resistance is to react immediately, use your body and every available weapons, and escape.
- An available weapon includes objects such as umbrella, lamp, ashtray, bottle, purse, etc.
- Five vital targets on the attacker are eyes, nose throat, groin, and knees. The idea is to disable rather than to hurt the attacker.
- Be realistic about your ability to protect yourself. Practicing rape avoidance requires action, but you must feel confident with whatever measures you decide to adopt.

PREVENTATIVE MEASURES - At Home:

- Lock all doors and windows at all time.
- Replace or re key locks when you move into a new home or apartment.
- Install a door viewer and a 1" deadbolt lock and make sure you have the only keys to your home.
- Leave outside and inside lights on at night. Use lights in more than one room.
- Pull all drapes and blinds completely closed to prevent someone seeing in from outside.
- Leave a TV or radio on so it does not appear you are alone.
- If you live alone, use your initials only on mailboxes and in the telephone directory.
- Never open your door to a stranger. Require identification from all repairmen, salesmen, etc.
- If you receive an obscene phone call, hang up call the police.
- Do not give personal information over the telephone.

PREVENTATIVE MEASURES (continued)

Driving:

- Never pick up hitchhikers.
- Make certain you have enough gas to get to your destination.
- Park in well lighted areas. When returning to your car, have your car keys ready so you can enter without delay, and look into the back seat.
- If possible, travel on well lighted streets and avoid isolated back roads and shortcuts.
- Never leave your house keys with your car keys at a service station or parking lot.
- Keep car doors locked at all times and car windows rolled up when possible.
- If you have car trouble, raise the hood, get back inside and lock all doors. If anybody stops to offer help, do not get out of your car. Roll the window down only enough to convey your message and ask them to call the police. Keep a "SEND POLICE" sign inside your vehicle and some change for telephone calls.

Walking:

- Never accept a ride or hitchhike.
- Stay in well lighted areas and avoid shortcuts, vacant lots and other deserted areas.
- When possible, avoid walking alone or walk in areas where other people are present.
- Walk facing traffic; if a driver does stop and ask directions, avoid getting too near the car.

REMEMBER: Our emergency number is extension 1375 (on campus); or utilize any on campus emergency information call box or telephone (Blue Phones).

Texas Code

The above acts constitute sexual assault when they are committed against a person's will as evidenced by refusal of consent or through the use of force, threat, or intimidation; or against a person who, by virtue of mental incapacity or physical helplessness, is unable to understand the nature or consequences of the sexual act or unable to communicate an unwillingness to engage in the sexual act.

This includes, but is not limited to, incapacity or helplessness caused by alcohol or other drugs. Intoxication of the assailant shall not diminish the assailant's responsibility for sexual assaults. Acquaintance Rape is sex against a person's will by someone the person knows:

- **At least one-third of all reported rape victims know their attacker—as a date, steady relationship, or a casual friend.**
- **Teenage girls and young women more likely to be victims than any other age group. Acquaintance rapists use psychological pressure, as well as physical force.**

PREVENTATIVE MEASURES (contd.)

Being forced into having sex - even if it is by someone you know - is rape, and it is a crime. Nothing gives a person the right to assault anyone - sexually or otherwise.

How To Protect Yourself

- **Before dating** someone you do not know well, check the person out with friends.
- **Plan to meet** someplace where there are other people--a restaurant, a movie, a mall, or go with a group of friends.
- **Be prepared** to find your own transportation home. Carry change for a phone call to your parents or a friend and enough cash for a taxi.
- **Don't get drunk** or stoned. Remember drugs and alcohol decrease your ability to take care of yourself and make sensible decisions.
- **Clearly and firmly** let your date know your limits before you get into a situation you cannot control.
- **Do not leave** a party, a concert, or a ball game with someone you just met.
- **Trust your instincts.** If you think something is not quite right or you feel uneasy, get to where there are other people or tell your date to leave - NOW. Be assertive.

The PVAMU Code of Student Conduct

Rape and all forms of sexual assault are violations of PVAMU's Code of Student Conduct.

Male Victims

While most victims of sexual assault are women, some men are also victims. Male victims at PVAMU receive the same services as women. Emotional support, counseling about options, information about resources related to legal issues and medical treatment are available to assist all those recovering from sexual assault.

Changing Living and Academic Situations

Prairie View A&M University will make every effort to assist a student that has been sexually assaulted if he or she requests a change in his/her living arrangement and/or academic situations. The Office of Student Affairs, the Office of Residential Life and the Office of Academic Affairs will make the necessary living and academic changes when such changes are reasonably available.

Sexual Assault and Sexual Harassment Education

Sexual Assault and Sexual Harassment Education seminars and programs are offered to students, faculty, staff and the community. The education seminars and programs are conducted on a regular basis for freshman orientation, middle school safety programs, the residence halls, campus student organizations, campus professional organizations.

Sexual Assault and Sexual Harassment Education (continued)

The seminars/programs include Sexual Offenses, Acquaintance Rape/Date Rape, Personal Safety, Sexual Harassment, and Self Defense. In addition, the University Counseling Center (Owens-Franklin Health Center) provides Sexual Assault Awareness programs for the university and community.

Contacts:

Prairie View A&M University Department of Public Safety:

(936) 261-1375 (emergency/police dispatch office)

or

Emergency 4-911 (on campus land line)

Prairie View A&M University Counseling Center (OFHC)

(936) 261-1400 or (800) 346-3549

Response Sexual Assault

- The Emergency Blue Phones are located strategically throughout the campus connect directly to the University Police Department.
- Talk with a counselor at Prairie View A&M University Counseling Center who will maintain confidentiality, help explain your options, give you information and provide emotional support.

If the student/victim of a sexual assault wishes to notify local police of an off campus occurrence, the University will assist the student/victim with the notification. The University police will also assist with the compiling of information that is necessary to prosecute the suspect through both the criminal and University Judicial Systems.

Sexual Harassment Policy

Prairie View A&M University is committed to maintaining a learning and work environment free from sexual harassment. The University prohibits the practice of sexual harassment and requires that its students and employees refrain from conduct which gives rise to allegations of sexual harassment.

Detailed information on the university sexual harassment policy can be found at: www.pvamu.edu/pages/948.asp

Sexual Harassment, in any form, is unacceptable behavior and will not be condoned at Prairie View A&M University. Violation of the policy prohibiting sexual harassment may lead to disciplinary actions, including reprimands, suspension, or termination of employment or academic status.

Sexual Harassment Policy (continued)

Sexual Harassment is defined as any unwelcome sexual advances, requests for sexual favors, any type of sexual discrimination, verbal, nonverbal or physical conduct of a sexual nature when:

- Such conduct has the purpose or effect of creating an intimidating, hostile, or offensive educational or working environment or substantially interferes with student's academic performance, their emotional well-being and the attainment of career goals; or
- Such conduct interferes with an employee's work performance, causing the employee distress and inability to function effectively in the performance of his/her academic or job requirement; or
- Such conduct is used as the basis for decision about academic evaluation, employment, promotion, transfer, selection for training or performance evaluation. Students and employees who believe that they may have been sexually harassed, but are uncertain as to whether a complaint is justified or whether they wish to initiate a formal complaint, may discuss their concerns confidentially and informally with:

Ms. Renee R. Williams, Equal Opportunity Officer
Office of Institutional Relations and Public Service
(936) 261-2123

Students May Also Consult:

- University Counseling Owens Franklin Health Center: **(936) 261-1400**
- Dr. Laurretta Byars (Vice President for Student Affairs): **(936) 261-2120**

JUDICIAL PROCEDURES

Upon notification of an alleged violation, the accused shall not initiate any contact, directly or indirectly, with the accuser. Retaliation against the accuser or against any witness involved in the case by the accused or others acting on behalf of the accused shall be considered violation of the Code of Student Conduct.

SEXUAL OFFENSES/DISCIPLINARY PROCEEDING

Both the accuser and the accused are entitled to the same opportunities to have other persons present during the campus disciplinary proceedings. In addition, both the accuser and the accused shall be informed of the outcome of any campus disciplinary proceeding brought as a result of the allegation of a sex offense.

DISCIPLINARY SANCTIONS

Any of the following sanctions may be imposed individually or cumulatively upon students who violate the University's Code of Conduct. Sanctions imposed by a hearing body may not be increased under any circumstances.

- Restitution
- Disciplinary Probation
- Disciplinary Suspension
- Expulsion
- Summary Expulsion
- Minimum Sanctions for Alcohol Violations
- Minimum Sanctions for Illegal Drug Violations

(Person found to be involved in the sale of illegal drugs will be subject to expulsion from the University)

- Community Service
- Warning

The Prairie View A&M University Judicial and Student Conduct disciplinary procedure is fully described in the Student Conduct Code Handbook and may be downloaded at:

http://www.pvamu.edu/Include/Student_Code/Student%20Conduct%20Code%20Procedures.pdf

PROHIBITION OF HAZING ACTIVITIES

State Law on Hazing

Hazing: Unlawful civil and criminal liability, duty of school, etc., officials Fraternity/Sorority and Student Organizations are prohibited from engaging in hazing.

Hazing - includes actions by fraternity/sorority individuals or organizations that mistreat individual(s) in such a way as to cause or could cause bodily harm. Hazing activities that jeopardize the health of students are subject to criminal prosecution in Texas and University disciplinary action, even though the action is not severe enough to warrant criminal prosecution.

Additional Definition of Hazing:

Any act that causes or is likely to cause serious physical or mental harm, or which tends to or actually injures, frightens, demeans, or disgraces any person; to annoy any student by playing abusive or ridiculous tricks upon them, endangering his/her life, frightening, scolding, beating, or harassing them, or subjecting them to personal indignity.

AMERICANS WITH DISABILITIES ACT (ADA)

It is the policy and practice of Prairie View A&M University to comply with the Americans with Disabilities Act of 1990, Section 504 of the Rehabilitation Act of 1973, and state and local requirements regarding students with disabilities. Under these laws, no qualified individual with a disability shall be denied access to or participation in services or programs at Prairie View A&M University. In compliance with the Americans with Disabilities Act, the Prairie View A&M University Counseling Center has developed -Supporting Students through Disability ServicesI (SDS). Supporting Students through Disability Services at Prairie View A&M University is a resource provided by the University through the Counseling Center.

Its purpose is to promote barrier-free environments and to provide reasonable accommodations (academic adjustments, auxiliary aids and services, training, consultation, and technical assistance) when needed. The following definitions are used to report crimes listed in accordance with the Federal Bureau of Investigation Uniform Crime reporting guidelines and training guide for hate crime data collection. The definitions for murder and non-negligent manslaughter, negligent manslaughter, robbery, aggravated assault, burglary, motor vehicle theft, arson, illegal weapons possession violations, drug abuse violations, and liquor law violations are excerpted from the Uniform Crime Reporting Handbook. The definitions of sex offenses are excerpted from the National Incident-Based Reporting System Edition of the Uniform Crime Reporting Handbook or the UC Reporting Handbook: NIBS EDITION.

Specific Information about the Crime Statistics Reported by PVAMU

The column -Reported to PVAMUPDI includes crime statistics from incidents that were reported to PVAMUPD. If an incident was reported to both PVAMUPD and PVPD, the statistics would be counted under the -Reported to PVAMUPDI column. Incidents reported to the PVAMU University Hospital Security Department are also included in this column.

The column -Reported to PVPDI includes crime statistics from incidents that were reported to PVPD but NOT reported to PVAMUPD. These incidents could have occurred on/in on-campus property, non-campus property or public property, as defined in the Appendix. The crime statistics provided by PVPD are provided based on the crime definitions in the WALLER COUNTY Crimes Code, not based on the Uniform Crime Reporting Program (UCR)/National Incident Based Reporting System (NIBRS), as required by the federal law. The column -Reported to Non-PoliceI includes crime statistics from incidents reported to officials at the institution who are defined by federal law as Campus Security Authorities because they have significant responsibility for student and campus activities, including, but not limited to, House Staff, Residence Directors, Area Coordinators, and Office of Student Conduct staff. Statistics for -Residential FacilitiesI are also counted in the -On-CampusI crime category. The law requires institutions to break out the number of -On-CampusI crimes that occur in residential facilities.

Specific Information about the Crime Statistics Reported by PVAMU (continued)

Only those incidents reported to PVAMUPD are captured in these statistics. PVAMUPD does not request these statistics from PVPD or other Campus Security Authorities. Statistics under the heading of -Referred for Disciplinary Action include those individuals referred to the Office of Student Conduct (OSRR) for disciplinary action by the Division of Student Affairs. The numbers include incidents that are reported via PVAMUPD incident reports and reports provided directly to OSRR from other members of the PVAMU community. The crime statistics for residence halls that are located outside the campus boundaries (HOVA and the Aston) are captured in the Non-Campus category starting January 1, 2009.

Reportable Crimes

Murder and Non-negligent Manslaughter - The willful (non-negligent) killing of one human being by another.

Negligent Manslaughter- The killing of another person through negligence.

Robbery - The taking, or attempting to take, anything of value under confrontational circumstances from the control, custody, or care of another person by force or threat of force or violence and/or by putting the victim in fear of immediate harm.

Aggravated Assault - An unlawful attack by one person upon another wherein the offender uses a weapon or displays it in a threatening manner, or the victim suffers obvious severe or aggravated bodily injury involving apparent broken bones, loss of teeth, possible internal injury, severe laceration, or loss of consciousness.

Motor Vehicle Theft- The theft of a motor vehicle.

Arson -To unlawfully and intentionally damage, or attempt to damage, any real or personal property by fire or incendiary device.

Burglary/Breaking and Entering -The unlawful entry into a building or other structure with the intent to commit a felony or a theft.

Sexual Offenses, Forcible -Any sexual act directed against another person, forcibly and/or against that person's will; or not forcibly or against the person's will where the victim is incapable of giving consent.

Forcible Rape -The carnal knowledge of a person, forcibly and/or against the person's will where the victim is incapable of giving consent because of his/her temporary or permanent mental or physical incapacity (or because of his/her youth).

Forcible Sodomy- Oral or anal sexual intercourse with another person, forcibly and/or against the person's will; or not forcibly or against the person's will where the victim is incapable of giving consent because of his/her youth or because of his/her temporary or permanent mental or physical incapacity.

Sexual Assault With An Object - To use an object or instrument to unlawfully penetrate, however slightly, the genital or anal opening of the body of another person, forcibly and/or against that person's will; or not forcibly or against the person's will where the victim is incapable of giving consent because of his/her youth or because of his/her temporary or permanent mental or physical incapacity.

Reportable Crimes *continued*

Forcible Fondling- The touching of the private body parts of another person for the purpose of sexual gratification, forcibly and/or against that person's will; or not forcibly or against the person's will where the victim is incapable of giving consent because of his/her youth or because of his/her temporary or permanent mental incapacity.

Sex Offenses, Non-Forcible - Unlawful, non-forcible sexual intercourse.

Incest-Non-forcible - Sexual intercourse between persons who are related to each other within the degrees wherein marriage is prohibited by law.

Statutory Rape - Non-forcible sexual intercourse with a person who is under the statutory age of consent.

Larceny/Theft Offenses- The unlawful taking, carrying, leading, or riding away of property from the possession, or constructive possession, of another person.

Liquor Law Violations- The violation of laws or ordinances prohibiting the manufacture, sale, purchase, transportation, possession, or use of alcoholic beverages.

WEAPONS LAW VIOLATIONS

The violation of laws or ordinances prohibiting the manufacture, sale purchase, transportation, possession, concealment, or use of firearms, cutting instruments, explosives, incendiary devices, or other deadly weapons.

HATE CRIME

A hate crime is one in which the victim is selected intentionally because of his or her actual or perceived race, gender, religion, sexual orientation, ethnicity, or disability. Prairie View A&M University must report by category of prejudice, and crime it reports in the grouping above, (except arrests for and persons referred for campus disciplinary action for liquor-law, drug-law, or weapons-law violations) and other crimes involving bodily injury reported to local police agency or campus security authority.

GEOGRAPHICAL CATAGORIES

Crime Statistics must be reported by location:

- On Campus-owned, contiguous, educational or student used
- In Dormitories or other student residences within the -on campus area.
- Non campus buildings or property; -Frat, non-contiguous owned and student used.
- Public property, streets, sidewalks, lots adjacent to -campus .
- Any building or property owned or controlled by an institution of higher education within the same reasonably contiguous geographic area of the institution and used by the institution in direct support of or in manner related to, the institution's educational purposes, including residence halls.
- Any building or property within the same reasonably contiguous geographic area of the institution that is owned by the university.

Student Residences

A subset of —On Campus— crimes that were reported to have occurred in dormitories or other residential facilities for students, on campus.

Non-Campus Buildings or Property

Any building or property owned or controlled by a student organization officially recognized by the institution.

Any building or property (other than a branch campus) owned or controlled by an institution of higher education that is used in direct support, of or in relation to the institution's educational purposes, is frequently used by students, and is not within the same reasonably contiguous geographic area of the institution.

Public Property

All public property, including thoroughfares, streets, sidewalks, and parking facilities, that is within the campus or immediately adjacent or accessible from the campus.

Whistleblower Protection and Anti-Retaliation

Retaliatory action against any individual with respect to the implementation of any provision of the Clery Act is strictly prohibited. Faculty, Staff, Students and Community members are encouraged to forward any information as related to crime on campus and should be confident in the fact that no action will be taken against them for the reporting of criminal statistics, violations of policy, rules or regulations.

Prairie View A&M University
Annual Fire Safety Report on Student Housing
Higher Education Campus Fire Safety Standards and Measures



October 1, 2014 Annual Fire Safety Report
(Fire Statistics for Year 2013)

Compiled by Environmental Health & Safety

TABLE OF CONTENTS

Message from Directors	57
Residence Life Mission Statement	58
Prairie View A&M University Emergency and Other Important Information	60
Fire Log Information	60
Definitions	61
On-Campus Student Housing Information	62
On-Campus Student Housing Facilities - Fire Safety Systems	62
Fire Statistics Log	63
Fire Safety Policies	64
Fire Drill and Evacuation Procedures	65
Fire Safety Education and Training Programs	65
Fire Safety Inspection Program	66
Plans for Future Improvements (if determined necessary)	
Report Contact Information	67
Appendix A Fire Drill Summary	68

A message from Our Directors

Welcome from the Director of Environmental Health & Safety (EHS)

EHS provides services for students, staff, faculty and visitors that promote a healthy and safe environment for the university community. These services are designed to assist PVAMU in achieving its teaching, research, and service objectives with effective, efficient, and safe operations and compliance with applicable laws, regulations, policies, and standards.

We are aggressive in pursuing prevention and resolution of unsafe conditions for your protection. We strive to be effective advocates for the university community while being flexible to effectively respond to the changing needs of the university community.

All EHS personnel try to be a shining example of safety stewards with the highest level of expertise.

We are user friendly and customer driven so please feel free to stop by and visit or stop us when we are out around campus to ask us questions or bring your concerns to our attention.

Welcome again to PVAMU and have a wonderful and safe experience.

Welcome from the Director of Residence Life

This is the place for you, a place to make new and everlasting friends; grow; develop; and achieve educational goals you have always dreamed about, but never believed you could achieve. The stresses of university life: Where am I going to live? Is there going to be parking? Will I have room for my Play Station 2 and my 15-foot celebrity poster? Is the food any good? You will not have to worry about any of these issues at PVAMU. We hope that the only stress you'll feel will be about meeting your professors' expectations.

The Residence Life web site (<http://www.pvamu.edu/pages/933.asp>) will supply you with the answers you need and the options you want. Applying for housing is a snap, parking and shuttle bus service are available and the food is great. You will have to ask your roommates about the PS2.

You'll probably be surprised at the number and variety of housing choices. The university has four student housing communities, including apartments for upper classmen and a living and learning community just for freshmen. You can request 2 or 4 bedroom apartments (upper classmen) and the roommate(s) of your choice.

Living in PVAMU housing offers a chance to build a community, not just a place to sleep. There's always activity brewing in PVAMU residential communities and there are always roommates and neighbors to talk with, go out with or just for hanging out. Residents have the advantage of being close to their classes and all of the extracurricular action on campus.

Your fellow residents are from all sorts of places: Houston, Dallas, Detroit, Asia, Africa and California for starters. You'll find it interesting to live with people whose backgrounds are completely different from yours, but who are facing the same challenges. And it may sound cliché, but it's true: these people with whom you'll attend lectures, play volleyball, make popcorn, and proof research papers will be your friends for life.

Again, welcome and we hope you enjoy our website.

MISSION STATEMENT

American Campus Community
Community Living Creed

Prairie View A&M University residence hall communities incorporate the following:

EDUCATION:

To ensure that teaching and learning take place beyond the classroom.

OPENNESS:

So that ideas and thoughts can be discussed freely.

RESPECT:

To ensure that individuality is honored so diversity can be pursued.

RESPONSIBILITY:

So that the individual accepts obligations to the community and is held accountable for individual actions.

CARING:

To ensure that the individual's well-being is supported and that community service is encouraged.

INVOLVEMENT:

So that all individuals have a voice in decisions concerning their community.

OWNERSHIP:

To ensure that all individuals care for their building facilities and adjacent property.

CELEBRATION:

So that Prairie View A&M University's history and culture are promoted and that residence hall and university traditions are shared.

ABOUT PRAIRIE VIEW A&M UNIVERSITY

Founded in 1876, Prairie View A&M University is the second oldest public institution of higher learning in the state of Texas. With an established reputation for producing engineers, nurses and educators, PVAMU offers baccalaureate degrees in 50 academic majors, 37 Master's degrees and four doctoral degree programs through nine colleges and schools. A member of the Texas A&M University System, the University is dedicated to fulfilling its land-grant mission of achieving excellence in teaching, research and service.

Prairie View A&M University is accredited by the Southern Association of Colleges and Schools as a comprehensive public institution of higher education authorized to award Bachelor's, Master's and Doctoral degrees, and is a member of the Texas A&M University System. It is a land-grant university authorized under the Morrill Acts of 1862 and 1890. The main campus is located in Waller County approximately 40 miles northwest of Houston and one mile north of US Highway 290 on Farm Road 1098. The College of Nursing facility is located in the Texas Medical Center in Houston.

The University offers a broad range of academic programs through the following administrative units:

- The College of Agriculture and Human Sciences
- The School of Architecture
- The College of Business
- The Roy G. Perry College of Engineering
- The College of Juvenile Justice and Psychology
- The College of Nursing
- The Graduate School
- The Marvin D. and June Samuel Brailsford College of Arts and Sciences
- Whitlowe R. Green College of Education

Though the University's service area has generally extended throughout Texas and the world, the University's target service area includes the Texas Gulf Coast Region, i.e., Waller, Harris, Montgomery, Washington, Grimes, Fort Bend, Galveston, Jefferson, Chambers, Liberty, Colorado, Wharton, Brazoria, and Austin Counties; the rapidly growing residential and commercial area known as the Northwest Houston Corridor as noted in the original Texas Plan; and urban Texas centers likely to benefit from Prairie View A&M University's specialized programs and services in juvenile justice, architecture, teacher education, social work, and the food, agricultural and natural resource sciences. Prairie View A&M University is authorized to offer a number of undergraduate and graduate degree programs at distant sites.

EMERGENCY AND OTHER IMPORTANT INFORMATION

REPORTING EMERGENCY:

On campus phones **Only**- Police/Fire/Medical - 4911

Non campus or cellular phones – (936) 261-1375

Non-Emergencies/General

University Police Department – (936) 261-1375
 Environmental Health & Safety – (936) 261-1745 / 1746 / 1743
 Web Site: <http://www.pvamu.edu/pages/547.asp>
 EHS email EHS@PVAMU.EDU

OTHER IMPORTANT TELEPHONE NUMBERS:

University College Community – (936) 261-5990
 University College Community Maintenance – (936) 261-3070
 University Village Community (936) 261-5950

REPORT

This report is developed as a requirement of the Higher Education Opportunity Act (Public Law 110-315).

Example for report that is filed separately from the Annual Security Report:

This report does not include any information required to be reported under the Jean Cleary Disclosure of Campus Security Policy and Campus Crime Statistics Act Annual Report. Information regarding the Cleary report is available by contacting the University Police Department at (936) 261-1375 or on the web at <http://www.pvamu.edu/pages/567.asp>.

FIRE LOG INFORMATION/LOCATION

Prairie View A&M University maintains a fire log that is available to the public. Fire log is maintained in the Environmental Health & Safety Department in the Harrington Science Building room 104. For access to it please call the Environmental Health & Safety Department at (936) 261-1746 or email us at EHS@PVAMU.EDU to schedule an appointment.

DEFINITIONS

Cause of fire: The factor or factors that give rise to a fire. The causal factor may be, but is not limited to, the result of an intentional or unintentional action, mechanical failure, or act of nature.

Fire: Any instance of open flame or other burning in a place not intended to contain the burning or in an uncontrolled manner.

Fire drill: A supervised practice of a mandatory evacuation of a building for a fire.

Fire-related injury: Any instance in which a person is injured as a result of a fire, including an injury sustained from a natural or accidental cause, while involved in fire control, attempting rescue, or escaping from the dangers of the fire. The term “person” may include students, employees, visitors, firefighters, or any other individuals.

Fire-related death: Any instance in which a person—

(1) Is killed as a result of a fire, including death resulting from a natural or accidental cause while involved in fire control, attempting rescue, or escaping from the dangers of a fire; or

(2) Dies within one year of injuries sustained as a result of the fire.

Fire safety system: Any mechanism or system related to the detection of a fire, the warning resulting from a fire, or the control of a fire. This may include sprinkler systems or other fire extinguishing systems, fire detection devices, stand-alone smoke alarms, devices that alert one to the presence of a fire, such as horns, bells, or strobe lights; smoke-control and reduction mechanisms; and fire doors and walls that reduce the spread of a fire.

Value of property damage: The estimated value of the loss of the structure and contents, in terms of the cost of replacement in like kind and quantity. This estimate should include contents damaged by fire, and related damages caused by smoke, water, and overhaul; however, it does not include indirect loss, such as business interruption.

ON-CAMPUS STUDENT HOUSING INFORMATION

All student housing is located on the campus of Prairie View A&M University in Prairie View, TX, and is on the PVAMU shuttle bus route. All student housing is managed by American Campus Communities, which is the nation's premier owner and manager of luxurious, academically-oriented student housing.

Phase I, II, & III – consist of 900 square foot, 4 bedroom 2 bathroom units. Phase II - has some 630 square foot 2 bedroom 2 bathroom units.

Phase III - has some 727 square foot 2 bedroom 2 bathroom units.

Phase VI - Freshman housing is comprised of 251 square feet double bedroom units.

Below is a summary of fire protection features provided in each of our on campus residential facilities.

On-Campus Student Housing Facilities - Fire Safety Systems

Housing Area	Fire Detection System Information	Fire Sprinkler System Information	Other information
University Village Phase I	Hard Wired Smoke detectors in every room	Fully Sprinkled Buildings, Sprinkler head in every room	Fire Alarms in every room
University Village Phase II	Hard Wired Smoke detectors in every room	Fully Sprinkled Buildings, Sprinkler head in every room	Fire Alarms in every room
University Village Phase III	Hard Wired Smoke detectors in every room	Fully Sprinkled Buildings, Sprinkler head in every room	Fire Alarms in every room
University College Phase IV (14 buildings)	Hard Wired Smoke detectors in every room	Fully Sprinkled Buildings, Sprinkler head in every room	Fire Alarms in every room

FIRE LOG REPORT (CALENDAR YEAR 2013)

Residential Facilities	Total Fires Per Bldg.	Time	Date	Cause of Fire	Injuries Requiring Treatment	Deaths	Property Damage
University Village Bldg. #1 (Clubhouse)	0	N/A	N/A	N/A	0	0	0
University Village Bldg. #2	0	N/A	N/A	N/A	0	0	0
University Village Bldg. #3	0	N/A	N/A	N/A	0	0	0
University Village Bldg. #4	0	N/A	N/A	N/A	0	0	0
University Village Bldg. #5	0	N/A	N/A	N/A	0	0	0
University Village Bldg. #6	0	N/A	N/A	N/A	0	0	0
University Village Bldg. #7	0	N/A	N/A	N/A	0	0	0
University Village Bldg. #8	0	N/A	N/A	N/A	0	0	0
University Village Bldg. #9	0	N/A	N/A	N/A	0	0	0
University Village Bldg. #10	0	N/A	N/A	N/A	0	0	0
University Village (Clubhouse) Bldg. #11	0	N/A	N/A	N/A	0	0	0
University Village Bldg. #12	0	N/A	N/A	N/A	0	0	0
University Village Bldg. #13	0	N/A	N/A	N/A	0	0	0
University Village Bldg. #14	0	N/A	N/A	N/A	0	0	0
University Village Bldg. #15	0	N/A	N/A	N/A	0	0	0
University Village Bldg. #16	0	N/A	N/A	N/A	0	0	0

Residential Facilities	Total Fires Per Bldg.	Time	Date	Cause of Fire	Injuries Requiring Treatment	Deaths	Property Damage
University Village Bldg. #17	0	N/A	N/A	N/A	0	0	0
University Village Bldg. #18	0	N/A	N/A	N/A	0	0	0
University Village Bldg. #19	0	N/A	N/A	N/A	0	0	0
University Village Bldg. #20	0	N/A	N/A	N/A	0	0	0
University Village Bldg. #21	0	N/A	N/A	N/A	0	0	0
University Village (Clubhouse) Bldg. #22	0	N/A	N/A	N/A	0	0	0
University Village Bldg. #23	0	N/A	N/A	N/A	0	0	0
University Village Bldg. #24	0	N/A	N/A	N/A	0	0	0
University Village Bldg. #25	0	N/A	N/A	N/A	0	0	0
University Village Bldg. #26	0	N/A	N/A	N/A	0	0	0
University Village Bldg. #27	0	N/A	N/A	N/A	0	0	0
University Village Bldg. #28	0	N/A	N/A	N/A	0	0	0
University Village Bldg. #29	0	N/A	N/A	N/A	0	0	0
University Village Bldg. #30	0	N/A	N/A	N/A	0	0	0
University Village Bldg. #31	0	N/A	N/A	N/A	0	0	0
University Village Bldg. #32	0	N/A	N/A	N/A	0	0	0
University Village Bldg. #33	0	N/A	N/A	N/A	0	0	0

Residential Facilities	Total Fires Per Bldg.	Time	Date	Cause of Fire	Injuries Requiring Treatment	Deaths	Property Damage
University College (Clubhouse) Bldg. #34	0	N/A	N/A	N/A	0	0	0
University College Bldg. #35	0	N/A	N/A	N/A	0	0	0
University College Bldg. #36	0	N/A	N/A	N/A	0	0	0
University College Bldg. #37	0	N/A	N/A	N/A	0	0	0
University College Bldg. #38	0	N/A	N/A	N/A	0	0	0
University College Bldg. #39	0	N/A	N/A	N/A	0	0	0
University College Bldg. #40	0	N/A	N/A	N/A	0	0	0
University College Bldg. #41	0	N/A	N/A	N/A	0	0	0
University College Bldg. #42	0	N/A	N/A	N/A	0	0	0
University College Bldg. #43	0	N/A	N/A	N/A	0	0	0
University College Bldg. #44	0	N/A	N/A	N/A	0	0	0
University College Bldg. #45	0	N/A	N/A	N/A	0	0	0
University College Bldg. #46	0	N/A	N/A	N/A	0	0	0
University College Bldg. #47	0	N/A	N/A	N/A	0	0	0
University College Bldg. #48	0	N/A	N/A	N/A	0	0	0
University Village Bldg. #49	0	N/A	N/A	N/A	0	0	0
University Village Bldg. #50	0	N/A	N/A	N/A	0	0	0



CAMPUS MAP

ADMINISTRATION

- 1 Administration Building
- 2 Evans Hall
- 3 Thomas E. Gray Information Center
- 4 W. A. Templeton Memorial Student Center

ACADEMIC

- ANDR 5 Anderson Hall
- ARCH 6 N. A. Kennedy Architecture Building
- BNKS 7 W. R. Banks Building
- BURL 8 Burleson Ware Hall
- COOP 9 Carden-Walker Cooperative Extension Building
- DELC 10 Wilhelmina R. F. Delco Building
- EBEV 11 E. B. Evans Building
- GLCWLS 12 C. L. Wilson/Gilchrist Engineering Building
- GREC 13 Austin Greaves Chemical Engineering Building
- HILL 14 Hilliard Hall Communication Building
- HMEC 15 Home Economics Building
- HDBT 16 Hobart Taylor Hall
- HSCI 17 Harrington Science Building
- JJPY 18 Juvenile Justice & Psychology Building
- LBRY 19 John B. Coleman Library
- LOEV 20 L. O. Evans Hall
- MENR 21 Electrical Engineering Building
- NRDTC 22 D. L. Brewer Naval ROTC Building
- NSCI 23 E. E. O'Banion Science Building
- POIN 24 A. N. Poinster Veterinary Clinic
- SRCD 25 S. R. Collins Engineering Building
- WOOL 26 G. D. Wolfolk Political Science Building
- 27 Observatory

CAMPUS LIFE

- 28 Community Center
- 29 Johnson Philip Al Faith Chapel
- 30 Farrell Hall (Laundromat)
- 31 Fire Station
- 32 Jones Elementary
- 33 Owens Franklin Health Center
- 34 Police Station/Central Receiving
- 35 Post Office
- 36 Student Park and Pavilion

HOUSING

- 37 University College
- 38 University Village Phase 1 & 2
- 39 University Village North Phase 3

ATHLETICS

- 40 Athletics Administration Building
- 41 Blackshear Stadium
- 42 Soccer Field
- 43 Baseball Field
- 44 Leroy G. Moore Jr. Intramural Gymnasium
- 45 Swimming Pool
- 46 Tennis Courts
- 47 Outdoor Basketball Court
- 48 William J. Nickle Field House (Baby Dome)

FARM

- 49 Farm Manager Office
- 50 Governor Bill & Vera Daniels Farm and Ranch
- 51 International Goat Research Building
- 52 Jessie & Mary Gibbs Jones Agriculture Research Building
- 53 Poultry Complex
- 54 Swine Complex

MAINTENANCE

- 55 Fry-Thomas Power Plant
- 56 Physical Plant
- 57 Transportation Building
- 58 Waste Water Plant

FIRE SAFETY POLICIES

Residence Halls

Smoking – All University Facilities are smoke free

Candles – Candles are prohibited in all campus facilities

Residence Hall Fire Safety

Use of Candles and Other Open Flames: The majority of fires that occur in residence halls across the Nation are a result of burning candles. All open flame devices are prohibited in student rooms, including burning incense. If candles are found in your room, they will be confiscated. Use of candles, incense, etc., may result in a student's referral to the Office of Student Affairs, and may result in one's relocation or removal from University housing.

Cooking appliances: Used inappropriately, all cooking devices can be extremely hazardous. According to the Terms and Conditions of Student Housing, any misuse of cooking appliances or use of non-approved devices may result in student's referral to the Student Affairs for Disciplinary Actions.

Electrical Overloads/ Extension Cords: Use of extension cords as permanent power supply (over 8 hours) is prohibited, instead, invest in a power strip. To ensure reasonable safety standards, minimum power strip requirements include that they be 3-prong grounded, have an auto-reset breaker in the strip, be UL-listed, and be made of 12-gauge or larger wire. Do not overload power strips or outlets by plugging one power strip into another, and do not route cords under doors, carpets, or furniture that will pinch the wire.

Smoke Detectors: Never cover, attempt to dismantle, or otherwise tamper with the smoke detectors in your room or hallways. If you see a problem with any smoke detector immediately report it to the Residence Hall Maintenance personnel. Any malfunctioning or broken smoke detectors will be replaced immediately. Interference with or misuse of fire alarms or other safety/security equipment or programs is a violation of the University's Code of Student Conduct and may result in a student's relocation or removal from University housing.

Smoking: Smoking in bed is extremely dangerous and is one of the primary causes of fires in living areas. Careless disposal of matches and cigarette butts is also a common cause of fires. Smoking is prohibited in all residential facilities, and University Buildings throughout PVAMU.

Halogen Lamps: Due to high temperatures emitted from halogen lamps, they are prohibited in the residence halls. Many fires have been caused by materials coming in contact with halogen bulbs or other parts of the lamp.

Residence Hall Fire Safety (continued)

Decorations: Flammable items such as tapestries, fishnets, and sheets may not be hung on the ceiling, walls, or lighting fixtures.

Flammable Liquids/Materials: Solvents like gasoline, ether, paint, etc., are not permitted in student rooms or storage areas. In addition, charcoal, gas, butane, and propane grills/burners are prohibited.

Sprinkler Systems: Sprinkler systems help contain and extinguish fires in buildings. The sprinkler heads are delicate pieces of equipment and will discharge water if damaged. Residents are required to maintain an 18-inch clearance around sprinkler heads. Never play sports in the hall or hang items from sprinkler heads as they are easily damaged and may activate. One sprinkler head will discharge 15-40 gallons of water per minute, can cost several hundred dollars to replace, and can do thousands of dollars of damage to personal property. Misuse/tampering with a sprinkler head is a violation of the University's Code of Student Conduct and may result in a student's relocation or removal from University housing

FIRE DRILL AND EVACUATION PROCEDURES

Fire Drills

- Done in each residence each semester. Results and reports submitted to PVAMU Residence
- Hall Director/Managers.
All students are to evacuate and meet up with their Residence Advisors away from building but within view if needed by response personnel for information.

FIRE SAFETY EDUCATION AND TRAINING PROGRAMS

Every community poses its own fire risks. In order to assess the risks at each community, the General Manager and Maintenance Supervisor should complete an annual walk-through with fire department personnel to inspect fire and alarm systems and to identify potential fire hazards in need of correction. This is an excellent time to build a good relationship with the local fire department so they are familiar with the site in the event of an emergency, and also to open doors for building a good programming relationship.

Listed below are several safety measures that should be implemented at the site level. Although they are divided into areas by staff position, keep in mind that the General Manager and/or Maintenance Supervisor may delegate responsibilities as they deem necessary.

FIRE SAFETY EDUCATION AND TRAINING PROGRAMS

(continued)

All Staff

- Keep office and storage areas clear of large quantities of paper, trash, or other combustible materials. Such conditions in resident units should be reported to the General Manager as soon as possible.
- Keep halls and doorways clear of obstruction
- Do not tamper with or attach anything to the fire system or related hardware.
- Keep electrical appliances and extension cords in good repair. Report any deficiencies to the maintenance department or management immediately.
- Keep heating appliances away from walls and combustible materials.
- Make a note of extinguisher locations nearest your work area. If you ever notice that an extinguisher is missing or under-charged, report it to the Maintenance Supervisor immediately.

To use an extinguisher:

- Remove pin from handle.
- Stand back approximately eight feet.
- Aim at the base of the fire and squeeze the handle.
- Move spray from side to side to cover the source of the flames.

FIRE SAFETY INSPECTION PROGRAM

Prairie View A&M University conducts several levels of fire and life safety inspections in all of our residence facilities. Inspections are done by the American Campus Community staff on a routine or as needed basis along with maintenance personnel during repair operations. PVAMU EHS personnel perform inspections in conjunction with fire drills and as requested by students or ACC personnel.

In addition, the University Physical Plant conducts inspections, testing, and maintenance of fire safety equipment in compliance with the requirements of the National Fire Protection Association.

Residence Halls

Monthly Inspections – Each month, ACC staff conduct egress area fire safety inspections.

These areas include corridors, stairways, and exit paths.

Pre-Occupancy Inspections – Prior to occupancy of residence halls each fall, spring and summer semester, a more in-depth inspection is conducted. These inspections include all common areas, mechanical, electrical, and custodial areas within each building as well as exit paths outside of the facilities.

FIRE SAFETY INSPECTION PROGRAM (continued)

Annual Inspections – Once each calendar year, a complete fire and life safety inspection is conducted by American Campus Community in conjunction with Environmental Health and Safety. The intent of these inspections is to increase the level of safety and safety awareness for all occupants of the residence halls. These inspections include residence hall rooms and staff offices as well as mechanical and common areas. Inspections begin around the third week of the fall semester and will continue until all residence halls have been inspected. Inspections will be conducted in the presence of a residence hall staff member. Safety practices in general and the Fire Life safety rules found in the rules section will be the primary focus of the inspection. These inspections will look for such items as:

- **Electrical:** Use of extension cords, cover plate missing/damaged, electrical wiring frayed/damaged/crimped, multi adapter without breaker in use, prohibited/ unapproved appliances
- **Fire Alarm Equipment:** smoke detector obstructed (min. 24" clearance), smoke detector damaged
- **Lofts:** being less than 30" from the ceiling, being of poor construction and/or being placed in an unsafe/unapproved location
- **Ignition Sources/Combustible Products:** candles/incense being present in the room, flammable liquids in the room, combustible materials near electrical source and excessive fire load in the room
- **Emergency Planning:** absence of the evacuation plan on the back of the room door, window/door obstructed
- **Miscellaneous:** poor housekeeping, floor/wall/ceiling penetrations, and the door closure missing/damaged

REPORT CONTACT INFORMATION

For purposes of including fire statistics in the annual fire safety report, employees and students should report all instances that a fire occurred in on-campus student housing to the individuals listed below. These individuals also can provide additional information about this report.

Aaron N. R. Scheffler
 Director, Environmental Health & Safety
 (936) 261-1745
ANSCHOFFLER@PVAMU.EDU

Daron White
 Safety Compliance Associate
 Environmental Health & Safety
 (936) 261-1746
DAWHITE@PVAMU.EDU

Ester A. Chalmers
 Environmental Health & Safety Officer
 (936) 261-1743
EACHALMERS@PVAMU.EDU

Fire Drill Summary Calendar Year 2013

Building Name	# of Drills
University Village Bldg. #2	1
University Village Bldg. #3	1
University Village Bldg. #4	1
University Village Bldg. #5	1
University Village Bldg. #6	1
University Village Bldg. #7	1
University Village Bldg. #8	1
University Village Bldg. #9	1
University Village Bldg. #10	1
University Village Bldg. #12	1
University Village Bldg. #13	1
University Village Bldg. #14	1
University Village Bldg. #15	1
University Village Bldg. #16	1
University Village Bldg. #17	1
University Village Bldg. #18	1
University Village Bldg. #19	1
University Village Bldg. #20	1
University Village Bldg. #21	1
University Village Bldg. #23	1
University Village Bldg. #24	1
University Village Bldg. #25	1
University Village Bldg. #26	1
University Village Bldg. #27	1
University Village Bldg. #28	1
University Village Bldg. #29	1
University Village Bldg. #30	1
University Village Bldg. #31	1
University Village Bldg. #32	1
University Village Bldg. #33	1
University College Bldg. #35	2
University College Bldg. #36	2
University College Bldg. #37	2
University College Bldg. #38	2
University College Bldg. #39	1
University College Bldg. #40	1
University College Bldg. #41	1
University College Bldg. #42	1
University College Bldg. #43	1
University College Bldg. #44	1
University College Bldg. #45	1
University College Bldg. #46	1
University College Bldg. #47	3
University Village Bldg. #48	3
University Village Bldg. #49	1
University Village Bldg. #50	1

Prairie View A&M University **MAIN CAMPUS 2013 Crime Report, Arrest and Disciplinary Referral Statistics**

71

<i>Offenses 2013</i>	<i>On Campus Property</i>	<i>Residential On Campus</i>	<i>Non- Campus Property</i>	<i>Public Property</i>
Murder/Non-negligent Manslaughter	0	0	0	0
Negligent Manslaughter	0	0	0	0
Sex Offenses Forcible	3	3	0	0
Sex Offenses, Non-Forcible (incest or statutory rape)	0	0	0	0
Robbery	3	3	0	0
Aggravated Assault	1	1	0	0
Burglary of Structure	16	16	0	0
Motor Vehicle Theft	6	0	0	0
Arson	0	0	0	0
Hate Crimes	0	0	0	0
Illegal Weapons Possession Arrests	2	1	0	0
Illegal Weapons Possession Violations Referred for Disciplinary Action	0	0	0	0
Drug Law Arrests	9	2	0	0
Drug Law Violations Referred for Disciplinary Action	69	59	0	0
Liquor Laws Arrests	0	0	0	0
Liquor Violations Referred for Disciplinary Action	33	33	0	0
Dating Violence	16	13	1	0
Domestic Violence	0	0	0	0
Stalking	2	1	0	0

*The City of Prairie View Police Department was unable to break down their statistics by contiguous or public property nor their burglary stats by forcible, non-forcible or attempted sub-categories. Therefore, their statistics are not reflected in the above categories.

CRIMINAL HOMICIDE (TOTAL)

SEXUAL OFFENSES FORCEABLE/NON-FORCEABLE (TOTAL)	2019	2020	2021	2022	2023
Forceable	1	1	1	1	1
Non-Forceable	1	1	1	1	1
Total	2	2	2	2	2

[illegible][illegible]

*The City of Prairie View Police Department was unable to break down their statistics by public property nor their burglary stats by forcible, non-forcible or attempted sub-categories. Therefore, their statistics are not reflected in the above categories.

Prairie View A&M University **MAIN CAMPUS Crime Report, Arrest and Disciplinary Referral Statistics**

73

2011	On-Campus Residence Only			All On-Campus Property			NON-Campus Property			Public Property		
CRIMES REPORTED	Reported to P.V D.P.S.	Reported to P.V. City P.D.	Reported to Non-Police	Reported to P.V D.P.S.	Reported to P.V. City P.D.	Reported to Non-Police	Reported to P.V D.P.S.	Reported to P.V. City P.D.	Reported to Non-Police	Reported to P.V D.P.S.	Reported to P.V. City P.D.	Reported to Non-Police
CRIMINAL HOMICIDE												
Murder/Non-Negligent Manslaughter	0	0	0	0	0	0	0	0	0	0	0	0
Negligent Manslaughter	0	0	0	0	0	0	0	0	0	0	0	0
SEXUAL OFFENSES												
Forcible	2	0	0	2	0	0	0	0	0	0	0	0
Non-Forcible	0	0	0	0	0	0	0	0	0	0	0	0
Other Sexual Offenses	1	0	0	0	0	0	0	0	0	0	0	0
Aggravated Assault	1	0	0	5	0	0	0	0	0	0	0	0
Robbery	4	0	0	4	0	0	0	0	0	0	0	0
Burglary Total(s)	27	0	0	31	0	0	0	0	0	0	0	0
Forcible Burglary	8	0	0	8	0	0	0	0	0	0	0	0
Non-Forcible Burglary	18	0	0	18	0	0	0	0	0	0	0	0
Attempted Burglary	1	0	0	5	0	0	0	0	0	0	0	0
Motor Vehicle Theft	0	0	0	8	0	0	0	0	0	0	0	0
Arson	0	0	0	0	0	0	0	0	0	0	0	0
ARRESTS												
Liquor Law Violation	0	0	0	0	0	0	0	0	0	0	0	0
Drug Violation	7	0	0	9	0	0	0	0	0	0	0	0
Weapon Possession	2	0	0	2	0	0	0	0	0	0	0	0
DISCIPLINARY REFERRALS												
Liquor Law Violation	0	0	0	0	0	0	0	0	0	0	0	0
Drug Violation	0	0	0	0	0	0	0	0	0	0	0	0
Weapon Possession	0	0	0	0	0	0	0	0	0	0	0	0

*The City of Prairie View Police Department was unable to break down their statistics by contiguous or public property nor their burglary stats by forcible, non-forcible or attempted sub-categories. Therefore, their statistics are not reflected in the above categories.

2013	Race				Gender				Religion				Sexual Orientation				Ethnicity				Disability			
Hate Crimes Reported	OC	NC	RF	PP	OC	NC	RF	PP	OC	NC	RF	PP	OC	NC	RF	PP	OC	NC	RF	PP	OC	NC	RF	PP
Murder/Non-Negligent Manslaughter	0	0	0	0	0	0	0	0	0	0	0	0	0	0	0	0	0	0	0	0	0	0	0	0
Negligent Manslaughter	0	0	0	0	0	0	0	0	0	0	0	0	0	0	0	0	0	0	0	0	0	0	0	0
Robbery	0	0	0	0	0	0	0	0	0	0	0	0	0	0	0	0	0	0	0	0	0	0	0	0
Aggravated Assault	0	0	0	0	0	0	0	0	0	0	0	0	0	0	0	0	0	0	0	0	0	0	0	0
Motor Vehicle Theft	0	0	0	0	0	0	0	0	0	0	0	0	0	0	0	0	0	0	0	0	0	0	0	0
Arson	0	0	0	0	0	0	0	0	0	0	0	0	0	0	0	0	0	0	0	0	0	0	0	0
Burglary	0	0	0	0	0	0	0	0	0	0	0	0	0	0	0	0	0	0	0	0	0	0	0	0
Sexual Offences Forcible	0	0	0	0	0	0	0	0	0	0	0	0	0	0	0	0	0	0	0	0	0	0	0	0
Sexual Offences Non-Forcible	0	0	0	0	0	0	0	0	0	0	0	0	0	0	0	0	0	0	0	0	0	0	0	0
Larceny	0	0	0	0	0	0	0	0	0	0	0	0	0	0	0	0	0	0	0	0	0	0	0	0
Vandalism	0	0	0	0	0	0	0	0	0	0	0	0	0	0	0	0	0	0	0	0	0	0	0	0
Intimidation	0	0	0	0	0	0	0	0	0	0	0	0	0	0	0	0	0	0	0	0	0	0	0	0
Simple Assault	0	0	0	0	0	0	0	0	0	0	0	0	0	0	0	0	0	0	0	0	0	0	0	0
Other Crimes Involving Bodily Injury	0	0	0	0	0	0	0	0	0	0	0	0	0	0	0	0	0	0	0	0	0	0	0	0

OC= ON CAMPUS

NC= NON CAMPUS

RF= RESIDENTIAL FACILITIES

PP= PUBLIC PROPERTY

*The City of Prairie View Police Department was unable to break down their statistics by contiguous or public property nor their burglary stats by forcible, non-forcible or attempted sub-categories. Therefore, their statistics are not reflected in the above categories.

2012	Race				Gender				Religion				Sexual Orientation				Ethnicity				Disability			
Hate Crimes Reported	OC	NC	RF	PP	OC	NC	RF	PP	OC	NC	RF	PP	OC	NC	RF	PP	OC	NC	RF	PP	OC	NC	RF	PP
Murder/Non-Negligent Manslaughter	0	0	0	0	0	0	0	0	0	0	0	0	0	0	0	0	0	0	0	0	0	0	0	0
Negligent Manslaughter	0	0	0	0	0	0	0	0	0	0	0	0	0	0	0	0	0	0	0	0	0	0	0	0
Robbery	0	0	0	0	0	0	0	0	0	0	0	0	0	0	0	0	0	0	0	0	0	0	0	0
Aggravated Assault	0	0	0	0	0	0	0	0	0	0	0	0	0	0	0	0	0	0	0	0	0	0	0	0
Motor Vehicle Theft	0	0	0	0	0	0	0	0	0	0	0	0	0	0	0	0	0	0	0	0	0	0	0	0
Arson	0	0	0	0	0	0	0	0	0	0	0	0	0	0	0	0	0	0	0	0	0	0	0	0
Burglary	0	0	0	0	0	0	0	0	0	0	0	0	0	0	0	0	0	0	0	0	0	0	0	0
Sexual Offences Forcible	0	0	0	0	0	0	0	0	0	0	0	0	0	0	0	0	0	0	0	0	0	0	0	0
Sexual Offences Non-Forcible	0	0	0	0	0	0	0	0	0	0	0	0	0	0	0	0	0	0	0	0	0	0	0	0
Larceny	0	0	0	0	0	0	0	0	0	0	0	0	0	0	0	0	0	0	0	0	0	0	0	0
Vandalism	0	0	0	0	0	0	0	0	0	0	0	0	0	0	0	0	0	0	0	0	0	0	0	0
Intimidation	0	0	0	0	0	0	0	0	0	0	0	0	0	0	0	0	0	0	0	0	0	0	0	0
Simple Assault	0	0	0	0	0	0	0	0	0	0	0	0	0	0	0	0	0	0	0	0	0	0	0	0
Other Crimes Involving Bodily Injury	0	0	0	0	0	0	0	0	0	0	0	0	0	0	0	0	0	0	0	0	0	0	0	0

OC= ON CAMPUS

NC= NON CAMPUS

RF= RESIDENTIAL FACILITIES

PP= PUBLIC PROPERTY

*The City of Prairie View Police Department was unable to break down their statistics by contiguous or public property nor their burglary stats by forcible, non-forcible or attempted sub-categories. Therefore, their statistics are not reflected in the above categories.

2011	Race				Gender				Religion				Sexual Orientation				Ethnicity				Disability			
Hate Crimes Reported	OC	NC	RF	PP	OC	NC	RF	PP	OC	NC	RF	PP	OC	NC	RF	PP	OC	NC	RF	PP	OC	NC	RF	PP
Murder/Non-Negligent Manslaughter	0	0	0	0	0	0	0	0	0	0	0	0	0	0	0	0	0	0	0	0	0	0	0	0
Negligent Manslaughter	0	0	0	0	0	0	0	0	0	0	0	0	0	0	0	0	0	0	0	0	0	0	0	0
Robbery	0	0	0	0	0	0	0	0	0	0	0	0	0	0	0	0	0	0	0	0	0	0	0	0
Aggravated Assault	0	0	0	0	0	0	0	0	0	0	0	0	0	0	0	0	0	0	0	0	0	0	0	0
Motor Vehicle Theft	0	0	0	0	0	0	0	0	0	0	0	0	0	0	0	0	0	0	0	0	0	0	0	0
Arson	0	0	0	0	0	0	0	0	0	0	0	0	0	0	0	0	0	0	0	0	0	0	0	0
Burglary	0	0	0	0	0	0	0	0	0	0	0	0	0	0	0	0	0	0	0	0	0	0	0	0
Sexual Offences Forcible	0	0	0	0	0	0	0	0	0	0	0	0	0	0	0	0	0	0	0	0	0	0	0	0
Sexual Offences Non-Forcible	0	0	0	0	0	0	0	0	0	0	0	0	0	0	0	0	0	0	0	0	0	0	0	0
Larceny	0	0	0	0	0	0	0	0	0	0	0	0	0	0	0	0	0	0	0	0	0	0	0	0
Vandalism	0	0	0	0	0	0	0	0	0	0	0	0	0	0	0	0	0	0	0	0	0	0	0	0
Intimidation	0	0	0	0	0	0	0	0	0	0	0	0	0	0	0	0	0	0	0	0	0	0	0	0
Simple Assault	0	0	0	0	0	0	0	0	0	0	0	0	0	0	0	0	0	0	0	0	0	0	0	0
Other Crimes Involving Bodily Injury	0	0	0	0	0	0	0	0	0	0	0	0	0	0	0	0	0	0	0	0	0	0	0	0

OC= ON CAMPUS

NC= NON CAMPUS

RF= RESIDENTIAL FACILITIES

PP= PUBLIC PROPERTY

*The City of Prairie View Police Department was unable to break down their statistics by contiguous or public property nor their burglary stats by forcible, non-forcible or attempted sub-categories. Therefore, their statistics are not reflected in the above categories.

Prairie View A&M University **Northwest Campus**
2013 Crime Report, Arrest and Disciplinary Referral Statistics

- 9449 Grant Rd. Houston, TX 77070

(no residential facilities)

Offenses 2013	On Campus Property	Residential On Campus	Non- Campus Property	Public Property
Murder/Non-negligent Manslaughter	0	0	0	0
Negligent Manslaughter	0	0	0	0
Sex Offenses Forcible	0	0	0	0
Sex Offenses, Non-Forcible (incest or statutory rape)	0	0	0	0
Robbery	0	0	0	0
Aggravated Assault	0	0	0	0
Burglary of Structure	0	0	0	0
Murder/Non-negligent Manslaughter	0	0	0	0
Negligent Manslaughter	0	0	0	0
Sex Offenses Forcible	0	0	0	0
Sex Offenses, Non-Forcible (incest or statutory rape)	0	0	0	0
Robbery	0	0	0	0
Aggravated Assault	0	0	0	0
Burglary of Structure	0	0	0	0
Motor Vehicle Theft	0	0	0	0
Arson	0	0	0	0
Hate Crimes	0	0	0	0
Illegal Weapons Possession Arrests	0	0	0	0
Illegal Weapons Possession Violations Referred for Disciplinary Action	0	0	0	0
Drug Law Arrests	0	0	0	0
Drug Law Violations Referred for Disciplinary Action	0	0	0	0
Liquor Laws Arrests	0	0	0	0
Liquor Violations Referred for Disciplinary Action	0	0	0	0
Dating Violence	0	0	0	0
Domestic Violence	0	0	0	0
Stalking	0	0	0	0

2012	On-Campus Residence Only			All On-Campus Property			NON-Campus Property			Public Property		
CRIMES REPORTED	Reported to P.V D.P.S.	Reported to P.V. City P.D.	Reported to Non-Police	Reported to P.V D.P.S.	Reported to P.V. City P.D.	Reported to Non-Police	Reported to P.V D.P.S.	Reported to P.V. City P.D.	Reported to Non-Police	Reported to P.V D.P.S.	Reported to P.V. City P.D.	Reported to Non-Police
CRIMINAL HOMICIDE												
Murder/Non-Negligent Manslaughter	0	0	0	0	0	0	0	0	0	0	0	0
Negligent Manslaughter	0	0	0	0	0	0	0	0	0	0	0	0
SEXUAL OFFENSES												
Forcible	0	0	0	0	0	0	0	0	0	0	0	0
Non-Forcible	0	0	0	0	0	0	0	0	0	0	0	0
Other Sexual Offenses	0	0	0	0	0	0	0	0	0	0	0	
Aggravated Assault	0	0	0	0	0	0	0	0	0	0	0	0
Robbery	0	0	0	0	0	0	0	0	0	0	0	0
Burglary Total(s)	0	0	0	0	0	0	0	0	0	0	0	0
Forcible Burglary	0	0	0	0	0	0	0	0	0	0	0	0
Non-Forcible Burglary	0	0	0	0	0	0	0	0	0	0	0	0
Attempted Burglary	0	0	0	0	0	0	0	0	0	0	0	0
Motor Vehicle Theft	0	0	0	0	0	0	0	0	0	0	0	0
Arson	0	0	0	0	0	0	0	0	0	0	0	0
ARRESTS												
Liquor Law Violation	0	0	0	0	0	0	0	0	0	0	0	0
Drug Violation	0	0	0	0	0	0	0	0	0	0	0	0
Weapon Possession	0	0	0	0	0	0	0	0	0	0	0	0
DISCIPLINARY REFERRALS												
Liquor Law Violation	0	0	0	0	0	0	0	0	0	0	0	0
Drug Violation	0	0	0	0	0	0	0	0	0	0	0	0
Weapons Possession	0	0	0	0	0	0	0	0	0	0	0	0

*The PVAMU Northwest Campus does not have residential facilities.

2011	On-Campus Residence Only			All On-Campus Property			NON-Campus Property			Public Property		
CRIMES REPORTED	Reported to P.V D.P.S.	Reported to P.V. City P.D.	Reported to Non-Police	Reported to P.V D.P.S.	Reported to P.V. City P.D.	Reported to Non-Police	Reported to P.V D.P.S.	Reported to P.V. City P.D.	Reported to Non-Police	Reported to P.V D.P.S.	Reported to P.V. City P.D.	Reported to Non-Police
CRIMINAL HOMICIDE												
Murder/Non-Negligent Manslaughter	0	0	0	0	0	0	0	0	0	0	0	0
Negligent Manslaughter	0	0	0	0	0	0	0	0	0	0	0	0
SEXUAL OFFENSES												
Forcible	0	0	0	0	0	0	0	0	0	0	0	0
Non-Forcible	0	0	0	0	0	0	0	0	0	0	0	0
Other Sexual Offenses	0	0	0	0	0	0	0	0	0	0	0	0
Aggravated Assault	0	0	0	0	0	0	0	0	0	0	0	0
Robbery	0	0	0	0	0	0	0	0	0	0	0	0
Burglary Total(s)	0	0	0	0	0	0	0	0	0	0	0	0
Forcible Burglary	0	0	0	0	0	0	0	0	0	0	0	0
Non-Forcible Burglary	0	0	0	0	0	0	0	0	0	0	0	0
Attempted Burglary	0	0	0	0	0	0	0	0	0	0	0	0
Motor Vehicle Theft	0	0	0	0	0	0	0	0	0	0	0	0
Arson	0	0	0	0	0	0	0	0	0	0	0	0
ARRESTS												
Liquor Law Violation	0	0	0	0	0	0	0	0	0	0	0	0
Drug Violation	0	0	0	0	0	0	0	0	0	0	0	0
Weapon Possession	0	0	0	0	0	0	0	0	0	0	0	0
DISCIPLINARY REFERRALS												
Liquor Law Violation	0	0	0	0	0	0	0	0	0	0	0	0
Drug Violation	0	0	0	0	0	0	0	0	0	0	0	0
Weapons Possession	0	0	0	0	0	0	0	0	0	0	0	0

*The PVAMU Northwest Campus does not have residential facilities.

2013	Race				Gender				Religion				Sexual Orientation				Ethnicity				Disability			
Hate Crimes Reported	OC	NC	RF	PP	OC	NC	RF	PP	OC	NC	RF	PP	OC	NC	RF	PP	OC	NC	RF	PP	OC	NC	RF	PP
Murder/Non-Negligent Manslaughter	0	0	0	0	0	0	0	0	0	0	0	0	0	0	0	0	0	0	0	0	0	0	0	0
Negligent Manslaughter	0	0	0	0	0	0	0	0	0	0	0	0	0	0	0	0	0	0	0	0	0	0	0	0
Robbery	0	0	0	0	0	0	0	0	0	0	0	0	0	0	0	0	0	0	0	0	0	0	0	0
Aggravated Assault	0	0	0	0	0	0	0	0	0	0	0	0	0	0	0	0	0	0	0	0	0	0	0	0
Motor Vehicle Theft	0	0	0	0	0	0	0	0	0	0	0	0	0	0	0	0	0	0	0	0	0	0	0	0
Arson	0	0	0	0	0	0	0	0	0	0	0	0	0	0	0	0	0	0	0	0	0	0	0	0
Burglary	0	0	0	0	0	0	0	0	0	0	0	0	0	0	0	0	0	0	0	0	0	0	0	0
Sexual Offences Forcible	0	0	0	0	0	0	0	0	0	0	0	0	0	0	0	0	0	0	0	0	0	0	0	0
Sexual Offences Non-Forcible	0	0	0	0	0	0	0	0	0	0	0	0	0	0	0	0	0	0	0	0	0	0	0	0
Larceny	0	0	0	0	0	0	0	0	0	0	0	0	0	0	0	0	0	0	0	0	0	0	0	0
Vandalism	0	0	0	0	0	0	0	0	0	0	0	0	0	0	0	0	0	0	0	0	0	0	0	0
Intimidation	0	0	0	0	0	0	0	0	0	0	0	0	0	0	0	0	0	0	0	0	0	0	0	0
Simple Assault	0	0	0	0	0	0	0	0	0	0	0	0	0	0	0	0	0	0	0	0	0	0	0	0
Other Crimes Involving Bodily Injury	0	0	0	0	0	0	0	0	0	0	0	0	0	0	0	0	0	0	0	0	0	0	0	0

OC= ON CAMPUS

NC= NON CAMPUS

RF= RESIDENTIAL FACILITIES

PP= PUBLIC PROPERTY

*The PVAMU Northwest Campus does not have residential facilities.

2012	Race				Gender				Religion				Sexual Orientation				Ethnicity				Disability			
Hate Crimes Reported	OC	NC	RF	PP	OC	NC	RF	PP	OC	NC	RF	PP	OC	NC	RF	PP	OC	NC	RF	PP	OC	NC	RF	PP
Murder/Non-Negligent Manslaughter	0	0	0	0	0	0	0	0	0	0	0	0	0	0	0	0	0	0	0	0	0	0	0	0
Negligent Manslaughter	0	0	0	0	0	0	0	0	0	0	0	0	0	0	0	0	0	0	0	0	0	0	0	0
Robbery	0	0	0	0	0	0	0	0	0	0	0	0	0	0	0	0	0	0	0	0	0	0	0	0
Aggravated Assault	0	0	0	0	0	0	0	0	0	0	0	0	0	0	0	0	0	0	0	0	0	0	0	0
Motor Vehicle Theft	0	0	0	0	0	0	0	0	0	0	0	0	0	0	0	0	0	0	0	0	0	0	0	0
Arson	0	0	0	0	0	0	0	0	0	0	0	0	0	0	0	0	0	0	0	0	0	0	0	0
Burglary	0	0	0	0	0	0	0	0	0	0	0	0	0	0	0	0	0	0	0	0	0	0	0	0
Sexual Offences Forcible	0	0	0	0	0	0	0	0	0	0	0	0	0	0	0	0	0	0	0	0	0	0	0	0
Sexual Offences Non-Forcible	0	0	0	0	0	0	0	0	0	0	0	0	0	0	0	0	0	0	0	0	0	0	0	0
Larceny	0	0	0	0	0	0	0	0	0	0	0	0	0	0	0	0	0	0	0	0	0	0	0	0
Vandalism	0	0	0	0	0	0	0	0	0	0	0	0	0	0	0	0	0	0	0	0	0	0	0	0
Intimidation	0	0	0	0	0	0	0	0	0	0	0	0	0	0	0	0	0	0	0	0	0	0	0	0
Simple Assault	0	0	0	0	0	0	0	0	0	0	0	0	0	0	0	0	0	0	0	0	0	0	0	0
Other Crimes Involving Bodily Injury	0	0	0	0	0	0	0	0	0	0	0	0	0	0	0	0	0	0	0	0	0	0	0	0

OC= ON CAMPUS

NC= NON CAMPUS

RF= RESIDENTIAL FACILITIES

PP= PUBLIC PROPERTY

*The PVAMU Northwest Campus does not have residential facilities.

Prairie View A&M University **NORTHWEST CAMPUS HATE CRIMES for 2011**
9449 Grant Rd. Houston, TX 77070

2011	Race				Gender				Religion				Sexual Orientation				Ethnicity				Disability			
Hate Crimes Reported	OC	NC	RF	PP	OC	NC	RF	PP	OC	NC	RF	PP	OC	NC	RF	PP	OC	NC	RF	PP	OC	NC	RF	PP
Murder/Non-Negligent Manslaughter	0	0	0	0	0	0	0	0	0	0	0	0	0	0	0	0	0	0	0	0	0	0	0	0
Negligent Manslaughter	0	0	0	0	0	0	0	0	0	0	0	0	0	0	0	0	0	0	0	0	0	0	0	0
Robbery	0	0	0	0	0	0	0	0	0	0	0	0	0	0	0	0	0	0	0	0	0	0	0	0
Aggravated Assault	0	0	0	0	0	0	0	0	0	0	0	0	0	0	0	0	0	0	0	0	0	0	0	0
Motor Vehicle Theft	0	0	0	0	0	0	0	0	0	0	0	0	0	0	0	0	0	0	0	0	0	0	0	0
Arson	0	0	0	0	0	0	0	0	0	0	0	0	0	0	0	0	0	0	0	0	0	0	0	0
Burglary	0	0	0	0	0	0	0	0	0	0	0	0	0	0	0	0	0	0	0	0	0	0	0	0
Sexual Offences Forcible	0	0	0	0	0	0	0	0	0	0	0	0	0	0	0	0	0	0	0	0	0	0	0	0
Sexual Offences Non-Forcible	0	0	0	0	0	0	0	0	0	0	0	0	0	0	0	0	0	0	0	0	0	0	0	0
Larceny	0	0	0	0	0	0	0	0	0	0	0	0	0	0	0	0	0	0	0	0	0	0	0	0
Vandalism	0	0	0	0	0	0	0	0	0	0	0	0	0	0	0	0	0	0	0	0	0	0	0	0
Intimidation	0	0	0	0	0	0	0	0	0	0	0	0	0	0	0	0	0	0	0	0	0	0	0	0
Simple Assault	0	0	0	0	0	0	0	0	0	0	0	0	0	0	0	0	0	0	0	0	0	0	0	0
Other Crimes Involving Bodily Injury	0	0	0	0	0	0	0	0	0	0	0	0	0	0	0	0	0	0	0	0	0	0	0	0

OC= ON CAMPUS

NC= NON CAMPUS

RF= RESIDENTIAL FACILITIES

PP= PUBLIC PROPERTY

*The PVAMU Northwest Campus **does not** have residential facilities.

*The PVAMU Houston School of Nursing Campus does not have residential

Offenses 2013	On Campus Property	Residential On Campus	Non- Campus Property	Public Property
Murder/Non-negligent Manslaughter	0	0	0	0
Negligent Manslaughter	0	0	0	0
Sex Offenses Forcible	0	0	0	0
Sex Offenses, Non-Forcible (incest or statutory rape)	0	0	0	0
Robbery	0	0	0	0
Aggravated Assault	0	0	0	0
Burglary of Structure	0	0	0	0
Murder/Non-negligent Manslaughter	0	0	0	0
Negligent Manslaughter	0	0	0	0
Sex Offenses Forcible	0	0	0	0
Sex Offenses, Non-Forcible (incest or statutory rape)	0	0	0	0
Robbery	0	0	0	0
Aggravated Assault	0	0	0	0
Burglary of Structure	0	0	0	0
Motor Vehicle Theft	0	0	0	0
Arson	0	0	0	0
Hate Crimes	0	0	0	0
Illegal Weapons Possession Arrests	0	0	0	0
Illegal Weapons Possession Violations Referred for Disciplinary Action	0	0	0	0
Drug Law Arrests	0	0	0	0
Drug Law Violations Referred for Disciplinary Action	0	0	0	0
Liquor Laws Arrests	0	0	0	0
Liquor Violations Referred for Disciplinary Action	0	0	0	0
Dating Violence	0	0	0	0
Domestic Violence	0	0	0	0
Stalking	0	0	0	0

2012 Nursing School	On-Campus Residence Only			All On-Campus Property			NON-Campus Property			Public Property		
CRIMES REPORTED	Reported to P.V. D.P.S.	Reported to P.V. City P.D.	Reported to Non- Police	Reported to P.V. D.P.S.	Reported to P.V. City P.D.	Reported to Non-Police	Reported to P.V. D.P.S.	Reported to P.V. City P.D.	Reported to Non-Police	Reported to P.V. D.P.S.	Reported to P.V. City P.D.	Reported to Non- Police
CRIMINAL HOMICIDE												
Murder/Non-Negligent Manslaughter	0	0	0	0	0	0	0	0	0	0	0	0
Negligent Manslaughter	0	0	0	0	0	0	0	0	0	0	0	0
SEXUAL OFFENSES												
Forcible	0	0	0	0	0	0	0	0	0	0	0	0
Non-Forcible	0	0	0	0	0	0	0	0	0	0	0	0
Other Sexual Offenses	0	0	0	0	0	0	0	0	0	0	0	0
Aggravated Assault	0	0	0	0	0	0	0	0	0	0	0	0
Robbery	0	0	0	0	0	0	0	0	0	0	0	0
Burglary Total(s)	0	0	0	0	0	0	0	0	0	0	0	0
Forcible Burglary	0	0	0	0	0	0	0	0	0	0	0	0
Non-Forcible Burglary	0	0	0	0	0	0	0	0	0	0	0	0
Attempted Burglary	0	0	0	0	0	0	0	0	0	0	0	0
Motor Vehicle Theft	0	0	0	0	0	0	0	0	0	0	0	0
Arson	0	0	0	0	0	0	0	0	0	0	0	0
ARRESTS												
Liquor Law Violation	0	0	0	0	0	0	0	0	0	0	0	0
Drug Violation	0	0	0	0	0	0	0	0	0	0	0	0
Weapon Possession	0	0	0	0	0	0	0	0	0	0	0	0
DISCIPLINARY REFERRALS												
Liquor Law Violation	0	0	0	0	0	0	0	0	0	0	0	0
Drug Violation	0	0	0	0	0	0	0	0	0	0	0	0
Weapon Possession	0	0	0	0	0	0	0	0	0	0	0	0

*The Houston Nursing School Campus does not have residential facilities.

[illegible]

2013 Nursing School	Race				Gender				Religion				Sexual Orientation				Ethnicity				Disability			
Hate Crimes Reported	OC	NC	RF	PP	OC	NC	RF	PP	OC	NC	RF	PP	OC	NC	RF	PP	OC	NC	RF	PP	OC	NC	RF	PP
Murder/Non-Negligent Manslaughter	0	0	0	0	0	0	0	0	0	0	0	0	0	0	0	0	0	0	0	0	0	0	0	0
Negligent Manslaughter	0	0	0	0	0	0	0	0	0	0	0	0	0	0	0	0	0	0	0	0	0	0	0	0
Robbery	0	0	0	0	0	0	0	0	0	0	0	0	0	0	0	0	0	0	0	0	0	0	0	0
Aggravated Assault	0	0	0	0	0	0	0	0	0	0	0	0	0	0	0	0	0	0	0	0	0	0	0	0
Motor Vehicle Theft	0	0	0	0	0	0	0	0	0	0	0	0	0	0	0	0	0	0	0	0	0	0	0	0
Arson	0	0	0	0	0	0	0	0	0	0	0	0	0	0	0	0	0	0	0	0	0	0	0	0
Burglary	0	0	0	0	0	0	0	0	0	0	0	0	0	0	0	0	0	0	0	0	0	0	0	0
Sexual Offences Forcible	0	0	0	0	0	0	0	0	0	0	0	0	0	0	0	0	0	0	0	0	0	0	0	0
Sexual Offences Non-Forcible	0	0	0	0	0	0	0	0	0	0	0	0	0	0	0	0	0	0	0	0	0	0	0	0
Larceny	0	0	0	0	0	0	0	0	0	0	0	0	0	0	0	0	0	0	0	0	0	0	0	0
Vandalism	0	0	0	0	0	0	0	0	0	0	0	0	0	0	0	0	0	0	0	0	0	0	0	0
Intimidation	0	0	0	0	0	0	0	0	0	0	0	0	0	0	0	0	0	0	0	0	0	0	0	0
Simple Assault	0	0	0	0	0	0	0	0	0	0	0	0	0	0	0	0	0	0	0	0	0	0	0	0
Other Crimes Involving Bodily Injury	0	0	0	0	0	0	0	0	0	0	0	0	0	0	0	0	0	0	0	0	0	0	0	0

OC= ON CAMPUS

NC= NON CAMPUS

RF= RESIDENTIAL FACILITIES

PP= PUBLIC PROPERTY

2012 Nursing School	Race				Gender				Religion				Sexual Orientation				Ethnicity				Disability			
Hate Crimes Reported	OC	NC	RF	PP	OC	NC	RF	PP	OC	NC	RF	PP	OC	NC	RF	PP	OC	NC	RF	PP	OC	NC	RF	PP
Murder/Non-Negligent Manslaughter	0	0	0	0	0	0	0	0	0	0	0	0	0	0	0	0	0	0	0	0	0	0	0	0
Negligent Manslaughter	0	0	0	0	0	0	0	0	0	0	0	0	0	0	0	0	0	0	0	0	0	0	0	0
Robbery	0	0	0	0	0	0	0	0	0	0	0	0	0	0	0	0	0	0	0	0	0	0	0	0
Aggravated Assault	0	0	0	0	0	0	0	0	0	0	0	0	0	0	0	0	0	0	0	0	0	0	0	0
Motor Vehicle Theft	0	0	0	0	0	0	0	0	0	0	0	0	0	0	0	0	0	0	0	0	0	0	0	0
Arson	0	0	0	0	0	0	0	0	0	0	0	0	0	0	0	0	0	0	0	0	0	0	0	0
Burglary	0	0	0	0	0	0	0	0	0	0	0	0	0	0	0	0	0	0	0	0	0	0	0	0
Sexual Offences Forcible	0	0	0	0	0	0	0	0	0	0	0	0	0	0	0	0	0	0	0	0	0	0	0	0
Sexual Offences Non-Forcible	0	0	0	0	0	0	0	0	0	0	0	0	0	0	0	0	0	0	0	0	0	0	0	0
Larceny	0	0	0	0	0	0	0	0	0	0	0	0	0	0	0	0	0	0	0	0	0	0	0	0
Vandalism	0	0	0	0	0	0	0	0	0	0	0	0	0	0	0	0	0	0	0	0	0	0	0	0
Intimidation	0	0	0	0	0	0	0	0	0	0	0	0	0	0	0	0	0	0	0	0	0	0	0	0
Simple Assault	0	0	0	0	0	0	0	0	0	0	0	0	0	0	0	0	0	0	0	0	0	0	0	0
Other Crimes Involving Bodily Injury	0	0	0	0	0	0	0	0	0	0	0	0	0	0	0	0	0	0	0	0	0	0	0	0

OC= ON CAMPUS

NC= NON CAMPUS

RF= RESIDENTIAL FACILITIES

PP= PUBLIC PROPERTY

*The Houston Nursing School Campus does not have residential facilities.

Prairie View A&M University Nursing School **HATE CRIMES for 2011**

2011 Nursing School	Race				Gender				Religion				Sexual Orientation				Ethnicity				Disability			
Hate Crimes Reported	OC	NC	RF	PP	OC	NC	RF	PP	OC	NC	RF	PP	OC	NC	RF	PP	OC	NC	RF	PP	OC	NC	RF	PP
Murder/Non-Negligent Manslaughter	0	0	0	0	0	0	0	0	0	0	0	0	0	0	0	0	0	0	0	0	0	0	0	0
Negligent Manslaughter	0	0	0	0	0	0	0	0	0	0	0	0	0	0	0	0	0	0	0	0	0	0	0	0
Robbery	0	0	0	0	0	0	0	0	0	0	0	0	0	0	0	0	0	0	0	0	0	0	0	0
Aggravated Assault	0	0	0	0	0	0	0	0	0	0	0	0	0	0	0	0	0	0	0	0	0	0	0	0
Motor Vehicle Theft	0	0	0	0	0	0	0	0	0	0	0	0	0	0	0	0	0	0	0	0	0	0	0	0
Arson	0	0	0	0	0	0	0	0	0	0	0	0	0	0	0	0	0	0	0	0	0	0	0	0
Burglary	0	0	0	0	0	0	0	0	0	0	0	0	0	0	0	0	0	0	0	0	0	0	0	0
Sexual Offences Forcible	0	0	0	0	0	0	0	0	0	0	0	0	0	0	0	0	0	0	0	0	0	0	0	0
Sexual Offences Non-Forcible	0	0	0	0	0	0	0	0	0	0	0	0	0	0	0	0	0	0	0	0	0	0	0	0
Larceny	0	0	0	0	0	0	0	0	0	0	0	0	0	0	0	0	0	0	0	0	0	0	0	0
Vandalism	0	0	0	0	0	0	0	0	0	0	0	0	0	0	0	0	0	0	0	0	0	0	0	0
Intimidation	0	0	0	0	0	0	0	0	0	0	0	0	0	0	0	0	0	0	0	0	0	0	0	0
Simple Assault	0	0	0	0	0	0	0	0	0	0	0	0	0	0	0	0	0	0	0	0	0	0	0	0
Other Crimes Involving Bodily Injury	0	0	0	0	0	0	0	0	0	0	0	0	0	0	0	0	0	0	0	0	0	0	0	0

OC= ON CAMPUS

NC= NON CAMPUS

RF= RESIDENTIAL FACILITIES

PP= PUBLIC PROPERTY

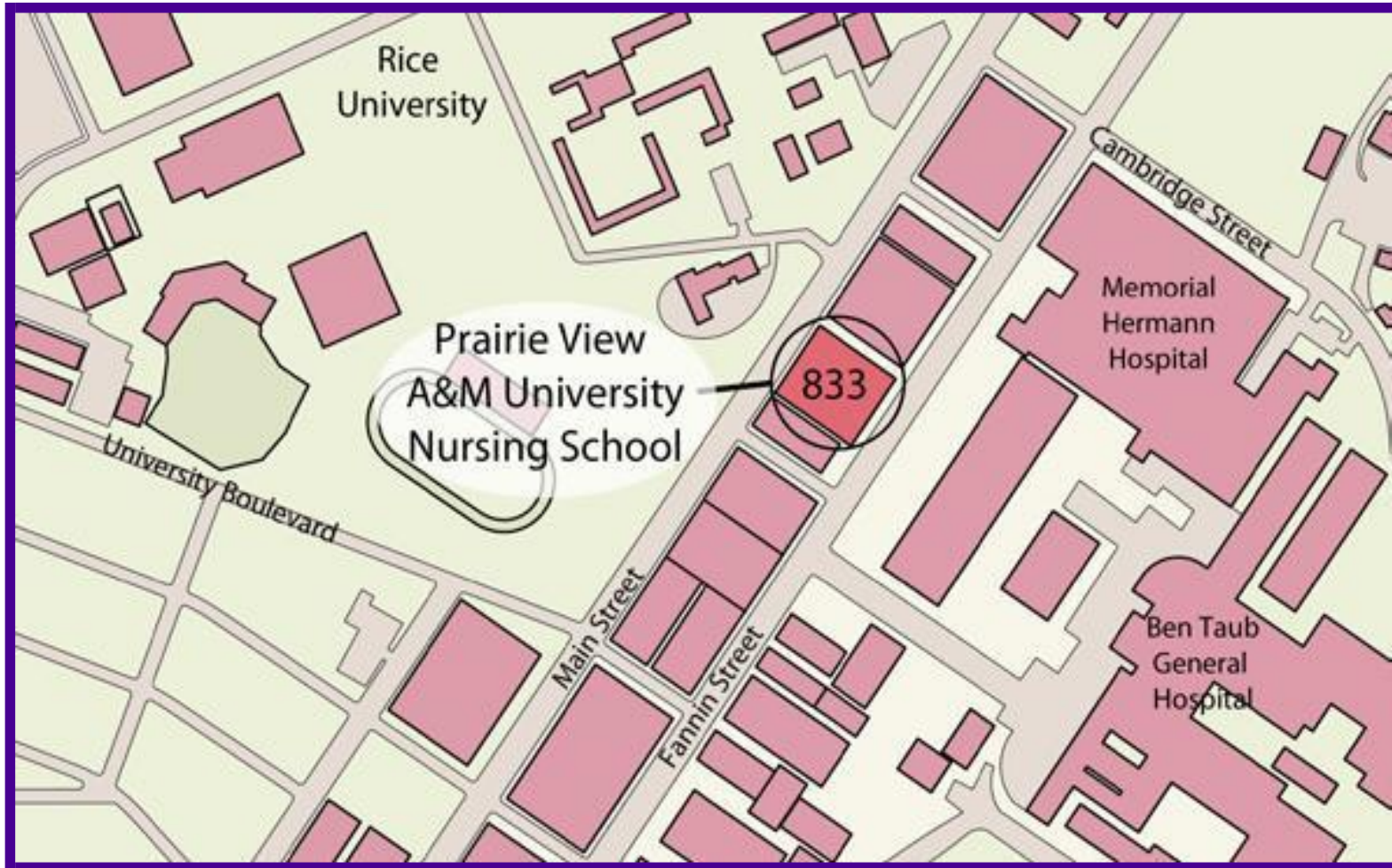
*The Houston Nursing School Campus does not have residential facilities.

Prairie View A&M University Main Campus



Prairie View A&M University College of Nursing Map

6436 Fannin Street
Houston, Texas 77030



Prairie View A&M University Northwest Campus Map

9449 Grant Rd. Houston, TX 77070

