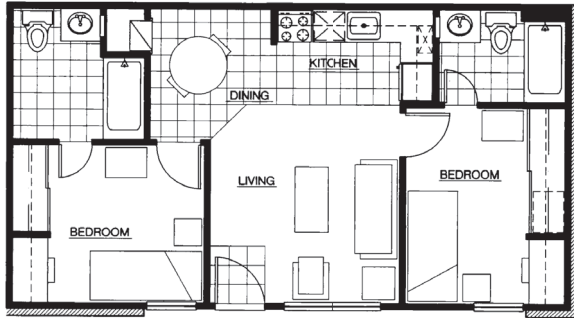


### UNIVERSITY VILLAGE I & II

To begin the housing process, you must submit a housing application and a \$150 security deposit by May 1, 2009. Once your application has been approved, you will be sent a lease agreement. The lease must be signed and returned with the first installment by June 1, 2009.

Only the return of the signed lease with payment of the first installment will ensure that you have a room assignment. Confirmed residents will be permitted to check-in only upon receipt of both the June and August installment payments.

Your housing payments include: basic cable service, water, sewer, trash and metered electric utilities (cap of \$25 per unit). All University Village amenities and community activities are fully accessible/inclusive to every resident. Telephone service is separate.



#### TWO BED + TWO BATH

A private bedroom & private bathroom

Paid in Full . . . . . \$4,518

Paid by Semester . . . . . \$2,259

9 Monthly Installments . . . \$502

*Approx. 630 sq.ft.*

*(First payment due by June 1, 2009)*

#### FOUR BED + TWO BATH

A private bedroom & shared bathroom

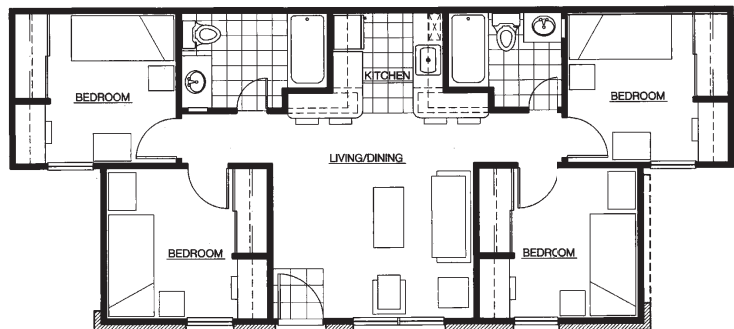
Paid in Full . . . . . \$4,005

Paid by Semester . . . . . \$2,002.50

9 Monthly Installments . . . . \$445

*Approx. 900 sq. ft.*

*(First payment due by June 1, 2009)*

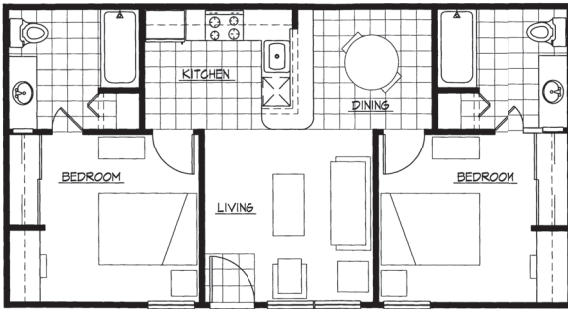


## UNIVERSITY VILLAGE NORTH

To begin the housing process, you must submit a housing application and a \$150 security deposit by May 1, 2009. Once your application has been approved, you will be sent a lease agreement. The lease must be signed and returned with the first installment by June 1, 2009.

**Only the return of the signed lease with payment of the first installment will ensure that you have a room assignment. Confirmed residents will be permitted to check-in only upon receipt of both the June and August installment payments.**

Your housing payments include: basic cable service, water, sewer, trash and metered electric utilities (cap of \$25 per unit). All University Village amenities and community activities are fully accessible/inclusive to every resident. Telephone service is separate.



### TWO BED + TWO BATH

**A private bedroom & private bathroom**

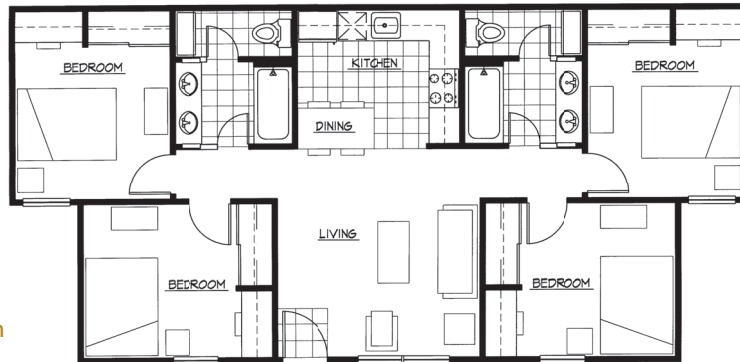
Paid in Full . . . . . \$5,211

Paid by Semester . . . . . \$2,605.50

9 Monthly Installments . . . . . \$579

*Approx. 727 sq. ft.*

*(First payment due by June 1, 2009)*



### FOUR BED + TWO BATH

**A private bedroom & shared bathroom**

Paid in Full . . . . . \$4,635

Paid by Semester . . . . . \$2,317.50

9 Monthly Installments . . . . . \$515

*Approx. 1,030 sq. ft.*

*(First payment due by June 1, 2009)*

Rates and included utilities are subject to change. Floor plans may vary.

R  
A  
T  
E  
S  
+  
P  
L  
A  
N  
S