



## Steps to receiving housing for Fall 2011

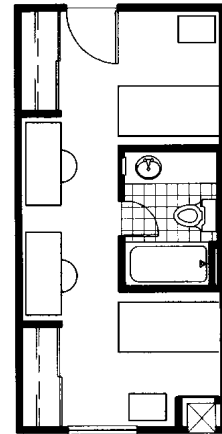
- 1) You must be accepted to Prairie View A & M University
- 2) A housing application will be in the admissions packet you will receive
- 3) Return your application with your \$150 security deposit.....A lease agreement will follow in the mail
- 4) Return your lease packet with your 1<sup>st</sup> installment ASAP, due date 7/1
- 5) Payment of \$150 deposit and 1<sup>st</sup> installment by July 1<sup>st</sup> to secure housing

**This needs to be done by JULY 1<sup>st</sup>**

Your housing payments include: water, sewer, trash, electricity, basic cable, basic telephone and a micro-fridge. All University College amenities and community activities are fully accessible/inclusive to every resident.

### **Amenities: 251 sq. ft.**

- Fully Furnished Units including a twin bed, a desk and chair and ample closet space in every room
- All utilities paid, except long distance
- Mini-blinds
- Computer lab with Internet access
- Private study rooms
- TV Lounge
- Fitness Center
- Mini Movie Theatre
- Indoor Recreation Room
- Academic Counseling Center
- On-Site Resident Life Staff



Roommate requests are not guaranteed but if space is available it will be filled on a first-come first-served basis.

