



## Do you need freshmen housing for the fall 2006-2007 academic school year?

### Steps to receiving housing for fall 2006

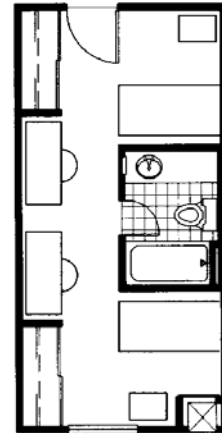
- 1) You must be accepted to Prairie View A & M University
- 2) After you are accepted we will automatically send you a housing application
- 3) Return your application with your \$150 security deposit ---a lease agreement will follow in the mail
- 4) Return your lease packet with your 1<sup>st</sup> installment payment of \$485--- a confirmation letter will follow

**Our deadline is July 1<sup>st</sup> 2006, we operate on a first come, first serve basis.**

Your housing payments include: water, sewer, trash, electricity, basic cable, basic telephone and a micro-fridge. All University College amenities and community activities are fully accessible/inclusive to every resident.

#### Amenities: 251 sq. ft.

- Fully Furnished Units including a twin bed, a built-in desk and ample closet space in every room
- Housekeeping Service
- All utilities paid, except long distance
- Mini-blinds
- Wireless Internet in every room
- Computer lab with Internet access
- Private study rooms
- TV Lounge
- Fitness Center
- Mini Movie Theatre
- Indoor Recreation Room
- Academic Counseling Center
- On-Site Resident Life Staff



School Year Paid In Full	School Year Paid in 8 Installments
2006-2007 Academic Semester	Payments due the first day of each month 7/1; 9/1; 10/1; 11/1; 12/1; 1/1; 2/1; 3/1
\$3880.00	\$485

Room assignments are dispersed on a **first come, first serve basis**. Roommate requests are not guaranteed.

