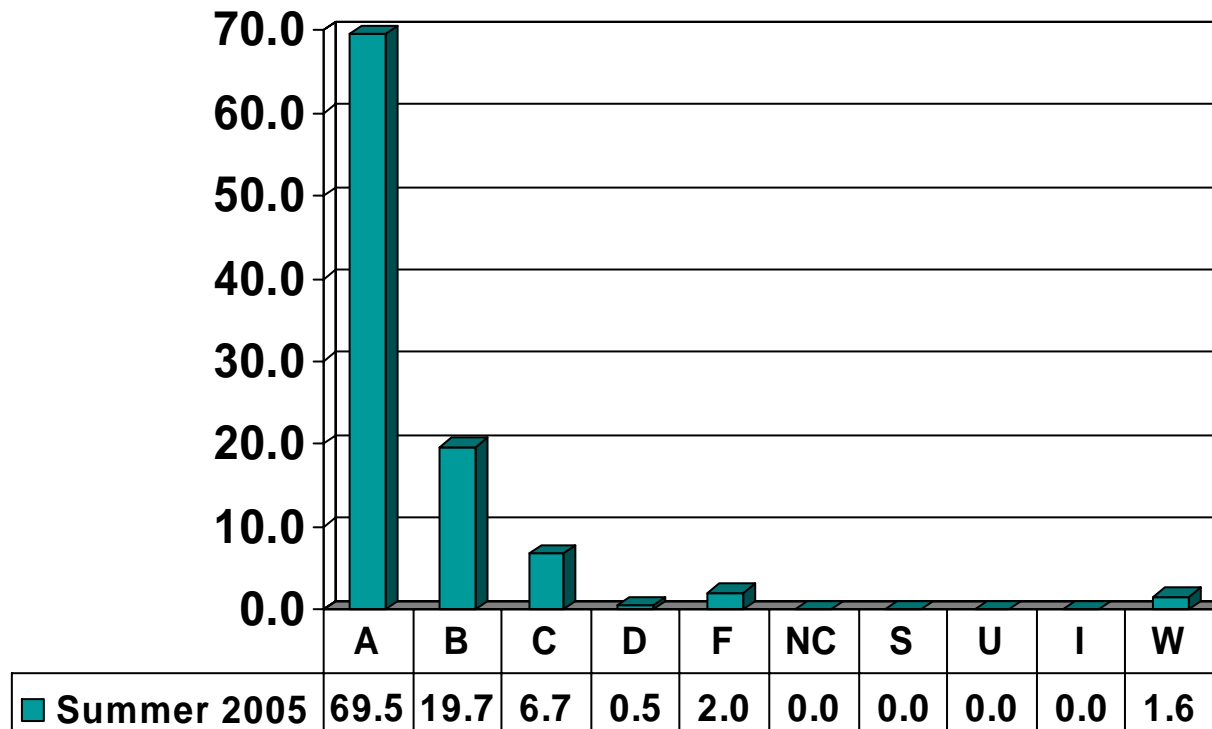


Prairie View A&M University  
Grade Distribution Report  
Summer 2005

Undergraduate Grade  
Distribution by Course

# EDUCATION

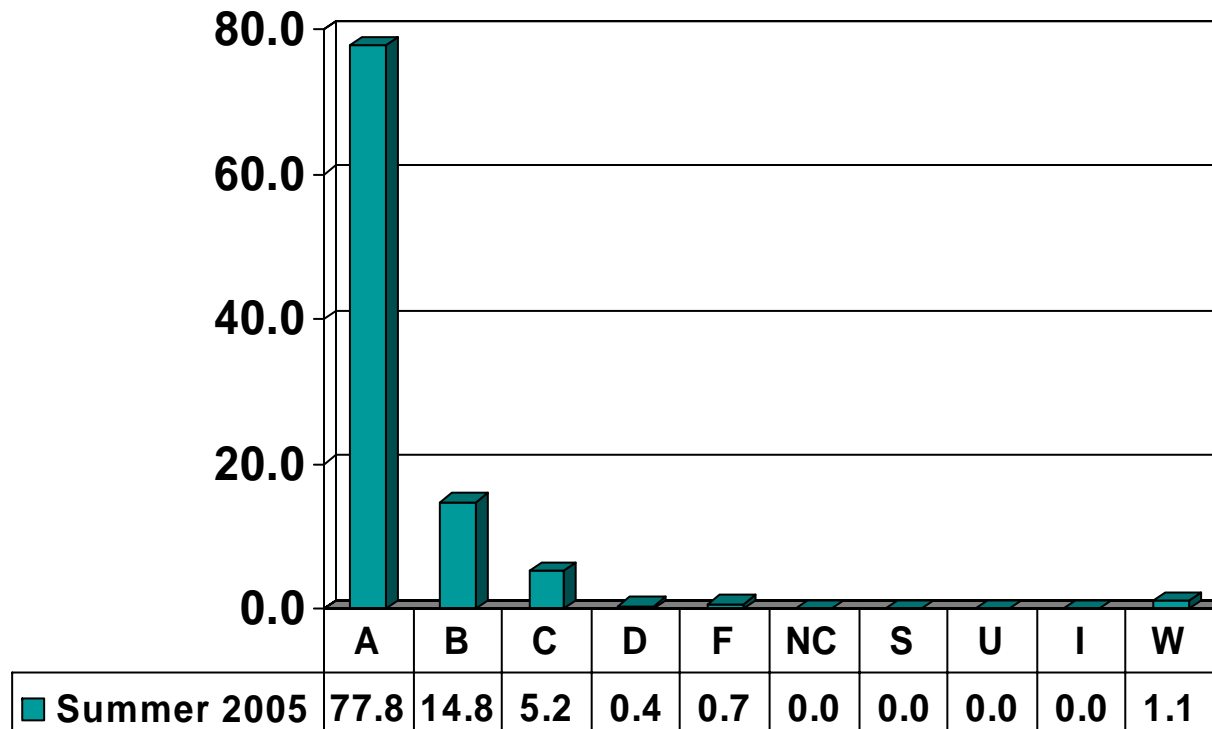
Undergraduate Courses – No. of Grades = 833



Note: Percent columns show rounded figures and may not total 100%.

# CURRICULUM & INSTRUCTION

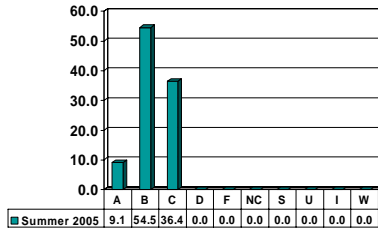
Undergraduate Courses – No. of Grades = 270



Note: Percent columns show rounded figures and may not total 100%.

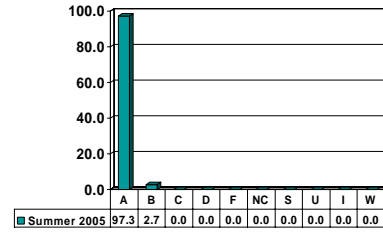
### CURRICULUM & INSTRUCTION 3003

Junior UG – No. of Grades = 33



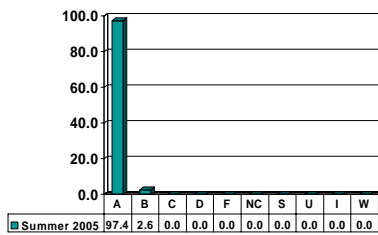
### CURRICULUM & INSTRUCTION 3013

Junior UG – No. of Grades = 37



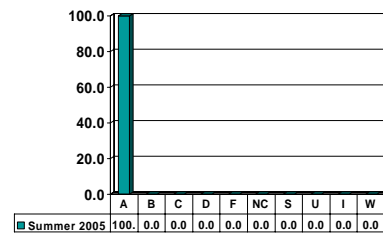
### CURRICULUM & INSTRUCTION 4103

Senior UG – No. of Grades = 38



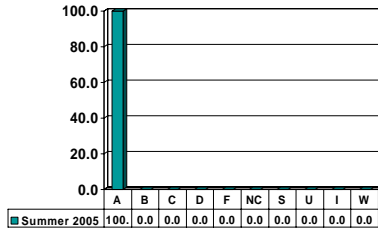
### CURRICULUM & INSTRUCTION 4113

Senior UG – No. of Grades = 37



# CURRICULUM 4993

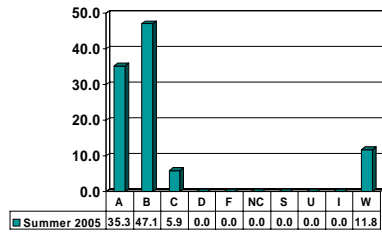
Senior UG – No. of Grades = 6



Note: Percent columns show rounded figures and may not total 100%.

# EARLY CHILDHOOD EDUCATION 4003

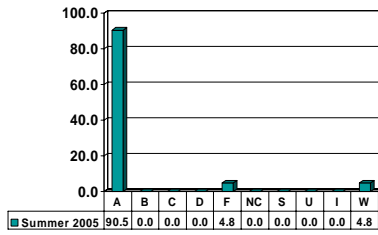
Senior UG – No. of Grades = 17



Note: Percent columns show rounded figures and may not total 100%.

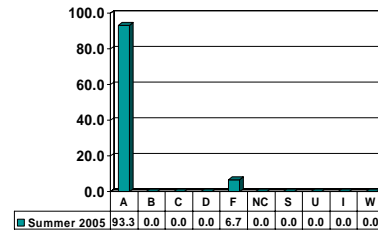
## READING 3643

Junior UG – No. of Grades = 21



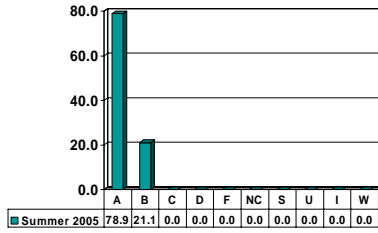
## READING 4653

Senior UG – No. of Grades = 15



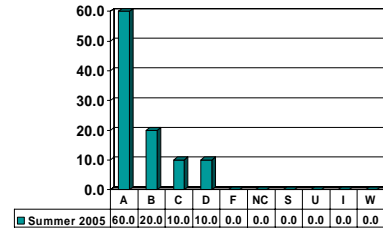
## SPECIAL EDUCATION 3003

Junior UG – No. of Grades = 19



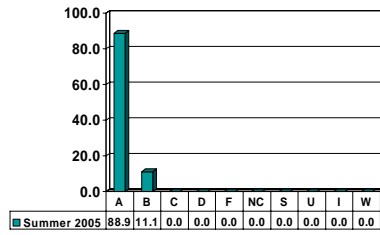
## SPECIAL EDUCATION 4003

Senior UG – No. of Grades = 10



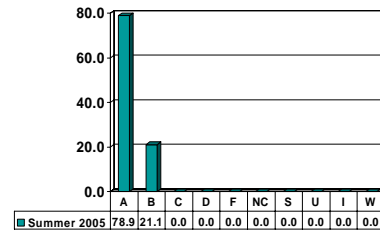
### VOCATIONAL EDUCATION 4603

Senior UG – No. of Grades = 18



### VOCATIONAL EDUCATION 4803

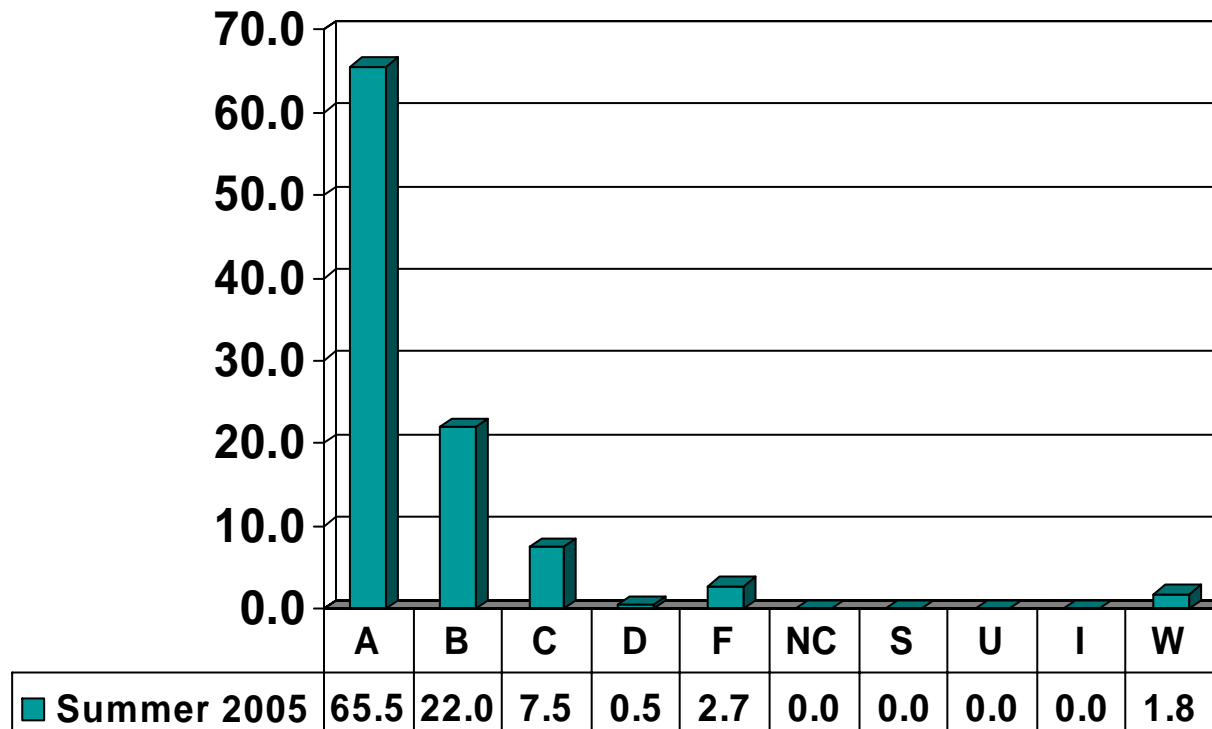
Senior UG – No. of Grades = 19



Note: Percent columns show rounded figures and may not total 100%.

# HEALTH & HUMAN PERFORMANCE

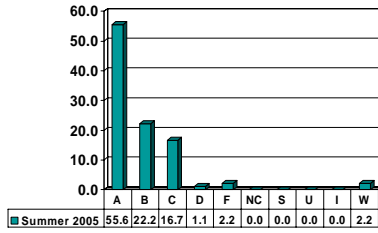
Undergraduate Courses – No. of Grades = 563



Note: Percent columns show rounded figures and may not total 100%.

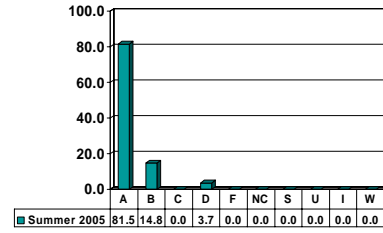
### HEALTH 1023

Freshman UG – No. of Grades = 90



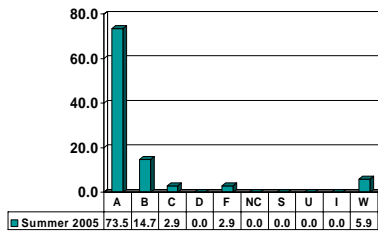
### HEALTH 1063

Freshman UG – No. of Grades = 27



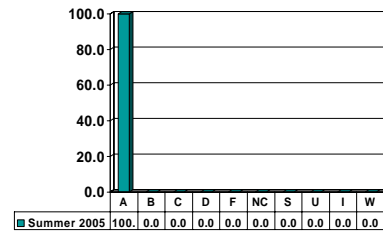
### HEALTH 2003

Sophomore UG – No. of Grades = 34



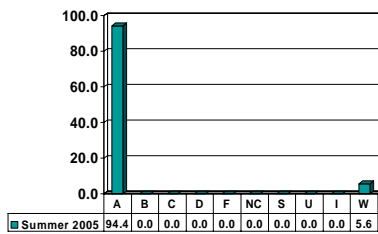
### HEALTH 2023

Sophomore UG – No. of Grades = 30



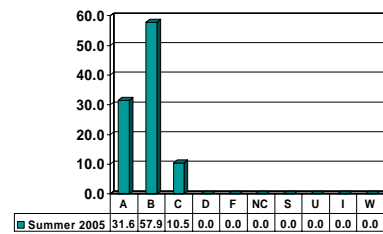
### HEALTH 3043

Junior UG – No. of Grades = 18



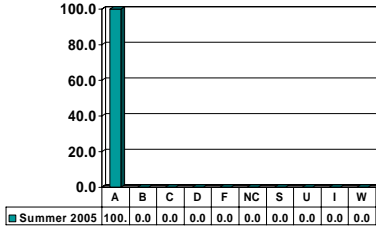
### HEALTH 3093

Junior UG – No. of Grades = 19



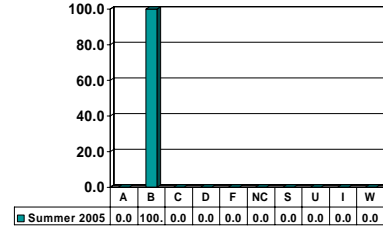
# HEALTH 4991

Senior UG – No. of Grades = 17



# HEALTH 4993

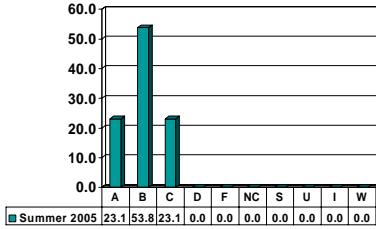
Senior UG – No. of Grades = 1



Note: Percent columns show rounded figures and may not total 100%.

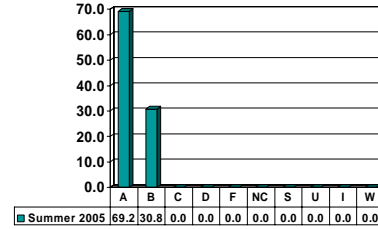
### HUMAN PERFORMANCE 1011

Freshman UG – No. of Grades = 26



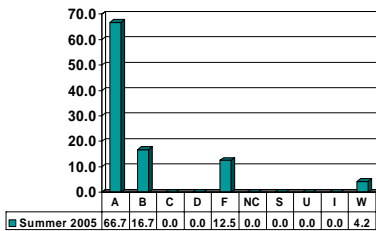
### HUMAN PERFORMANCE 1012

Freshman UG – No. of Grades = 13



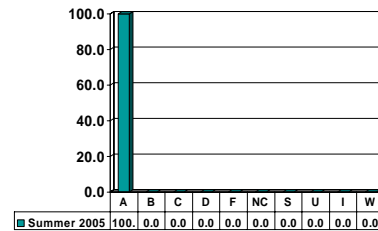
### HUMAN PERFORMANCE 1061

Freshman UG – No. of Grades = 24



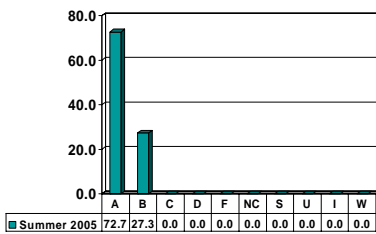
### HUMAN PERFORMANCE 1081

Freshman UG – No. of Grades = 4



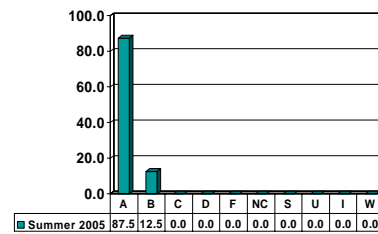
### HUMAN PERFORMANCE 1112

Freshman UG – No. of Grades = 11



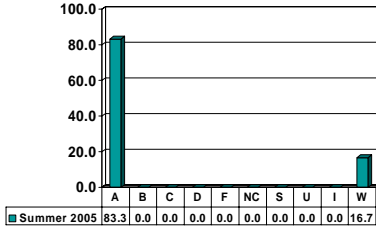
### HUMAN PERFORMANCE 1121

Freshman UG – No. of Grades = 8



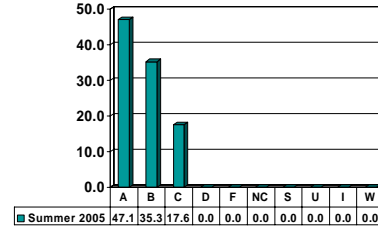
### HUMAN PERFORMANCE 1141

Freshman UG – No. of Grades = 6



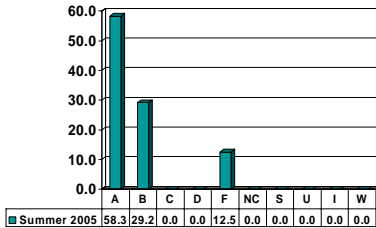
### HUMAN PERFORMANCE 1151

Freshman UG – No. of Grades = 17



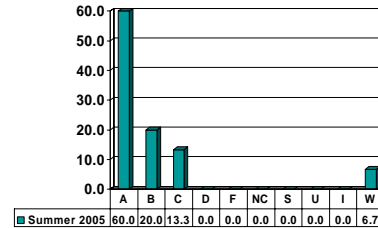
### HUMAN PERFORMANCE 1172

Freshman UG – No. of Grades = 24



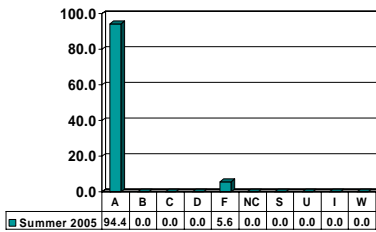
### HUMAN PERFORMANCE 1211

Freshman UG – No. of Grades = 15



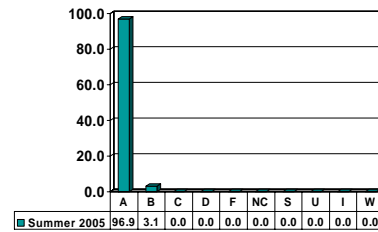
### HUMAN PERFORMANCE 1241

Freshman UG – No. of Grades = 18



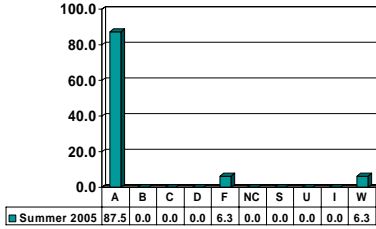
### HUMAN PERFORMANCE 1272

Freshman UG – No. of Grades = 32



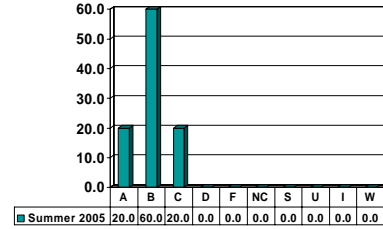
### HUMAN PERFORMANCE 1301

Freshman UG – No. of Grades = 16



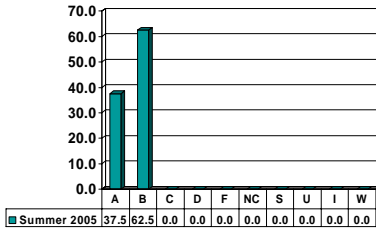
### HUMAN PERFORMANCE 1312

Freshman UG – No. of Grades = 5



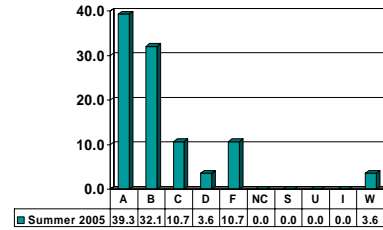
### HUMAN PERFORMANCE 1412

Freshman UG – No. of Grades = 8



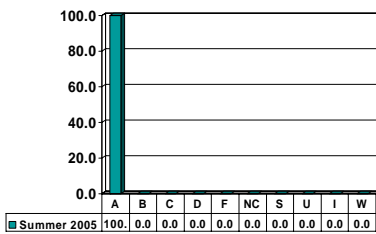
### HUMAN PERFORMANCE 2023

Sophomore UG – No. of Grades = 28



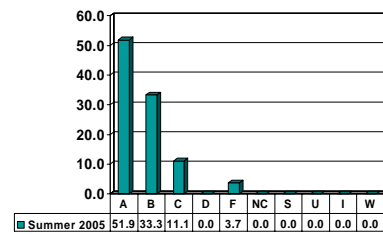
### HUMAN PERFORMANCE 4033

Senior UG – No. of Grades = 11



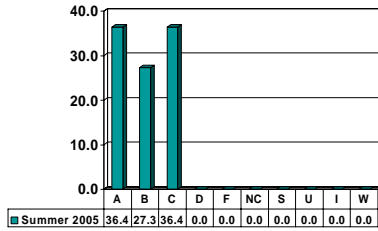
### HUMAN PERFORMANCE 4053

Senior UG – No. of Grades = 27



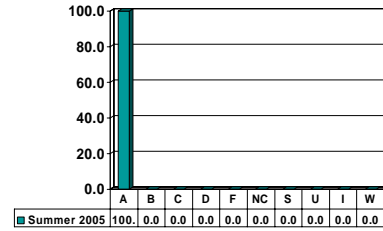
### HUMAN PERFORMANCE 4083

Senior UG – No. of Grades = 11



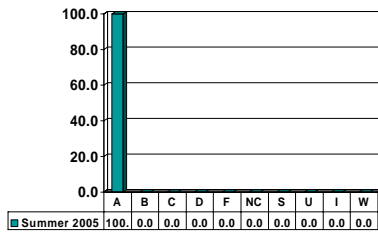
### HUMAN PERFORMANCE 4196

Senior UG – No. of Grades = 2



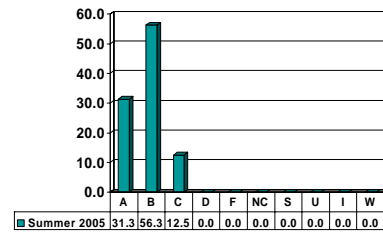
### HUMAN PERFORMANCE 4991

Senior UG – No. of Grades = 1



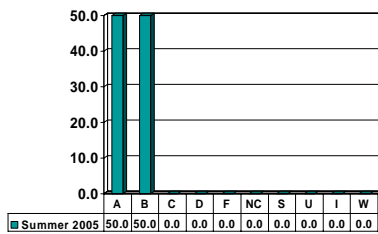
### HUMAN PERFORMANCE 4992

Senior UG – No. of Grades = 16



### HUMAN PERFORMANCE 4993

Senior UG – No. of Grades = 4



Note: Percent columns show rounded figures and may not total 100%.