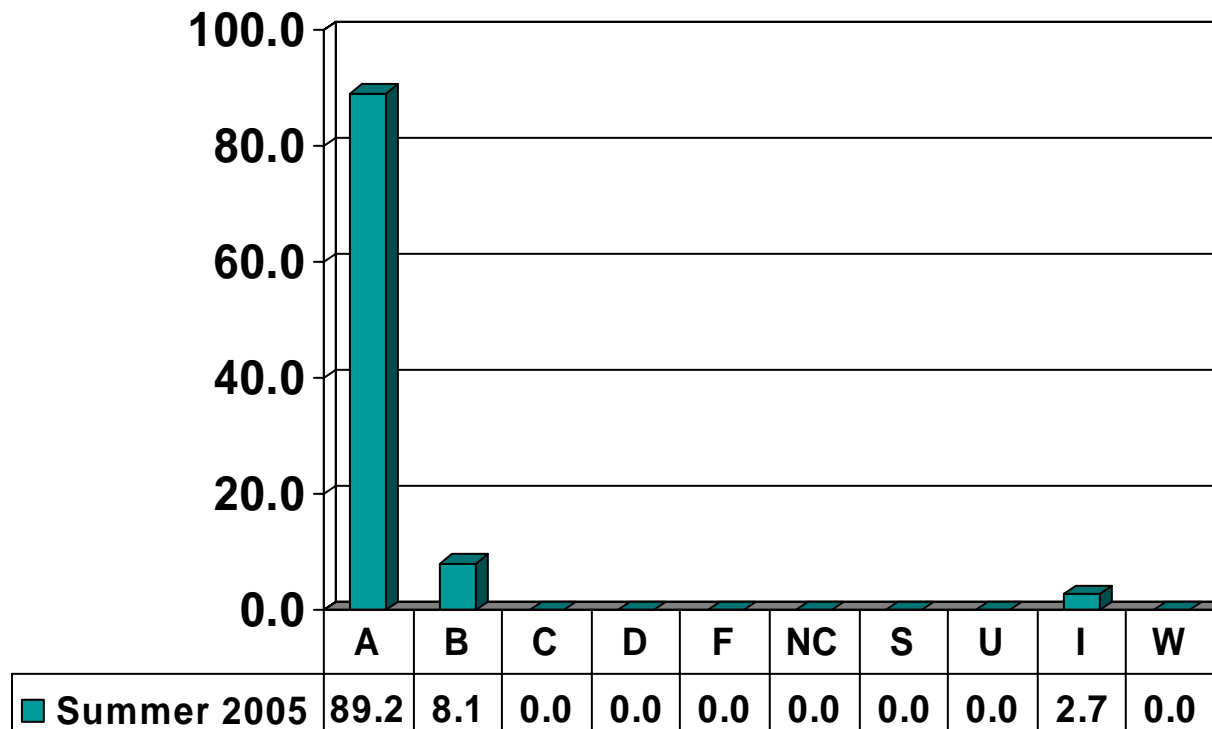


Prairie View A&M University
Grade Distribution Report
Summer 2005

Undergraduate Grade
Distribution by Course

AGRICULTURE & HUMAN SCIENCES

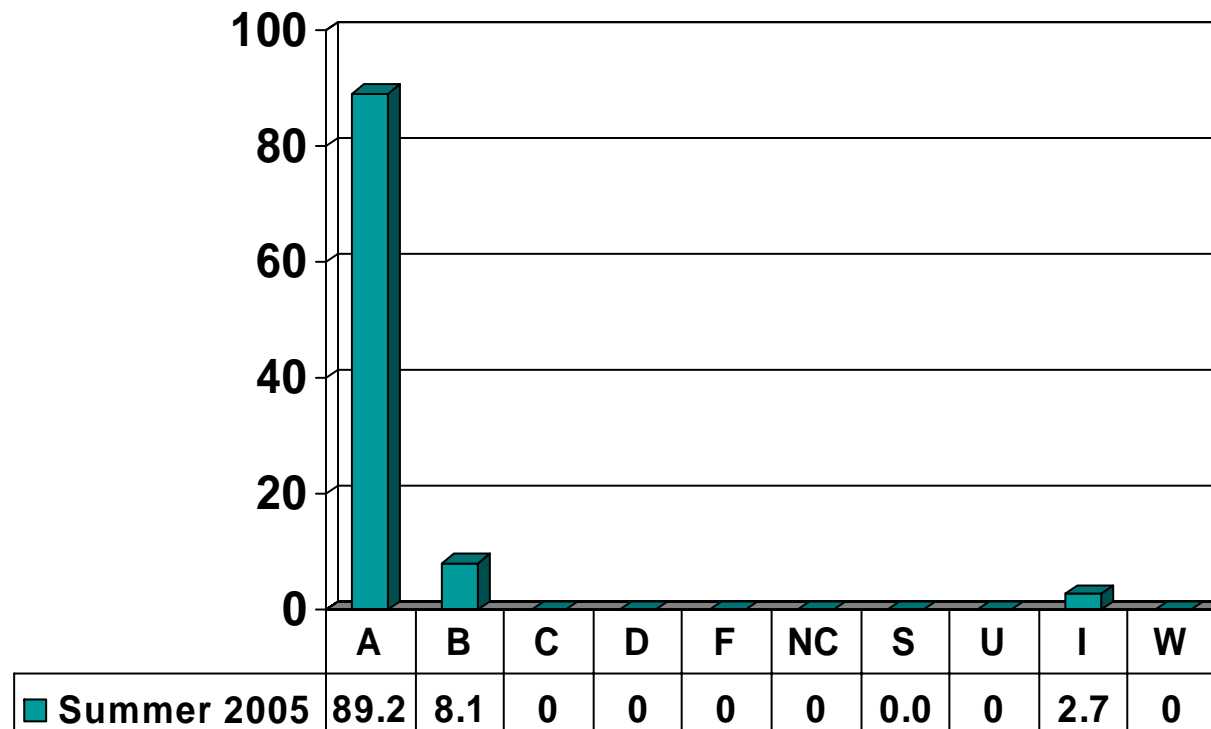
Undergraduate Courses – No. of Grades = 37



Percent columns show rounded figures and may not total 100%.

AGRICULTURE, NUTRITION & HUMAN ECOLOGY

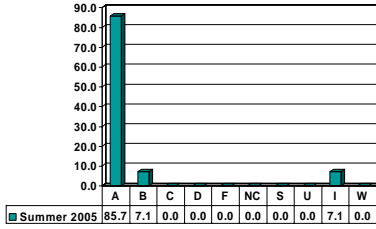
Undergraduate Courses – No. of Grades = 37



Note: Percent columns show rounded figures and may not total 100%.

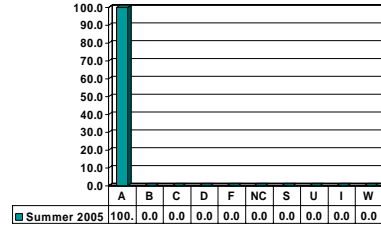
**AGRICULTURE &
HUMAN RESOURCES 3996**

Junior UG – No. of Grades = 14



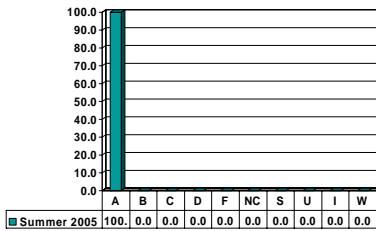
**AGRICULTURE &
HUMAN RESOURCES 4413**

Senior UG – No. of Grades = 4



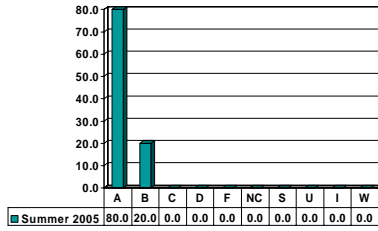
**AGRICULTURE &
HUMAN RESOURCES 4993**

Senior UG – No. of Grades = 9



HUMAN SCIENCE 4306

Senior UG – No. of Grades = 10



Note: Percent columns show rounded figures and may not total 100%.