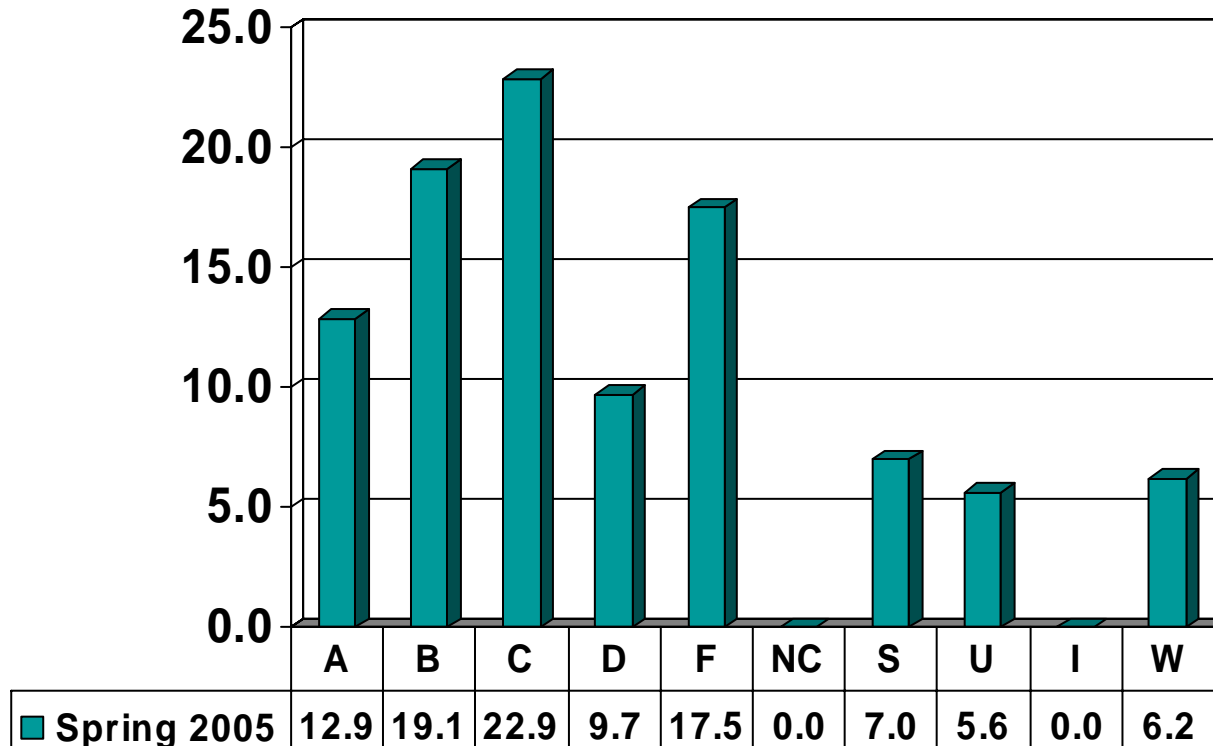


Prairie View A&M University
Grade Distribution Report
Spring 2005

Undergraduate Grade
Distribution by Course

UNIVERSITY COLLEGE

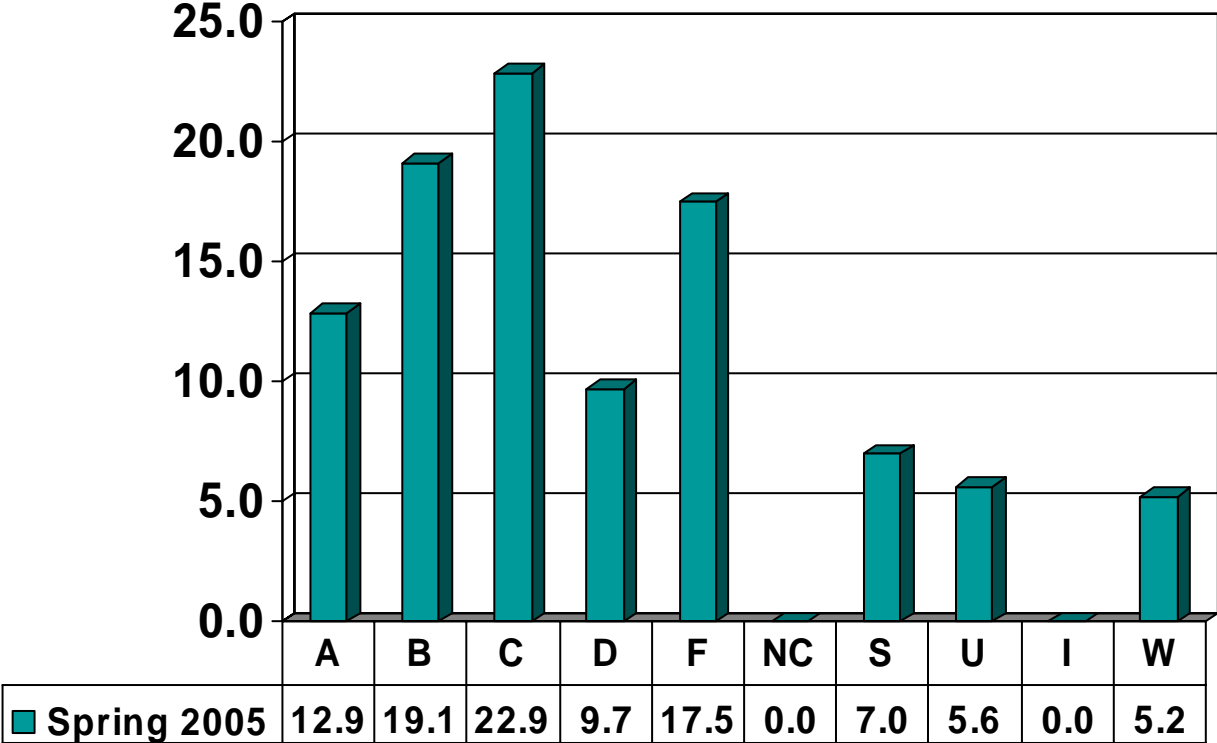
Undergraduate Courses – No. of Grades = 1,923



Note: Percent columns show rounded figures and may not total 100%.

DEVELOPMENTAL STUDIES

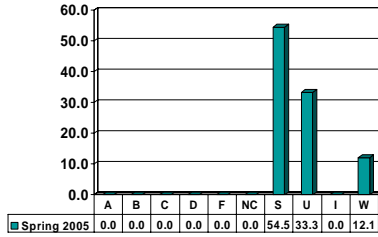
Undergraduate Courses – No. of Grades = 1,923



Note: Percent columns show rounded figures and may not total 100%.

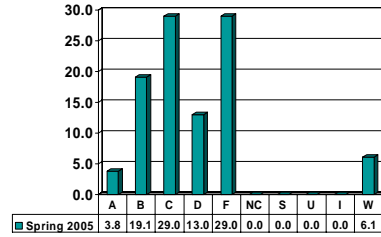
ENGLISH 0100

Freshman UG – No. of Grades = 33



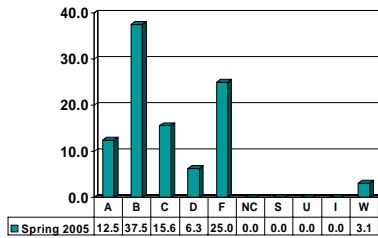
ENGLISH 0112

Freshman UG – No. of Grades = 131



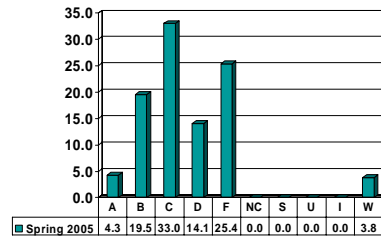
ENGLISH 0131

Freshman UG – No. of Grades = 32



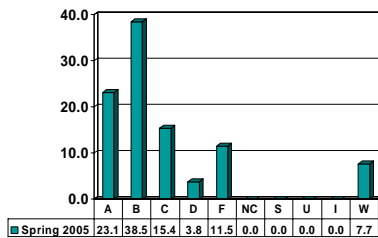
ENGLISH 0200

Freshman UG – No. of Grades = 185



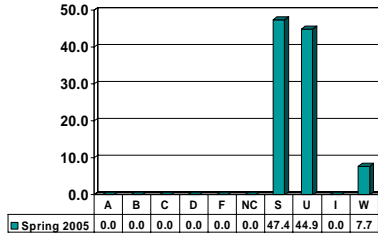
ENGLISH 0300

Freshman UG – No. of Grades = 26



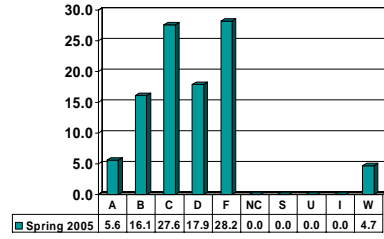
MATH 0100

Freshman UG – No. of Grades = 156



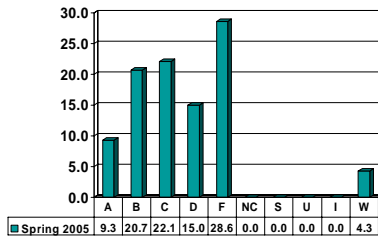
MATH 0113

Freshman UG – No. of Grades = 341



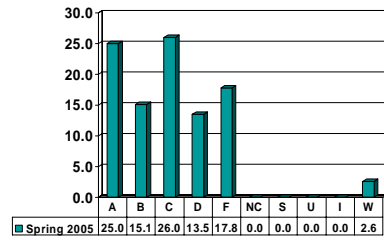
MATH 0133

Freshman UG – No. of Grades = 140



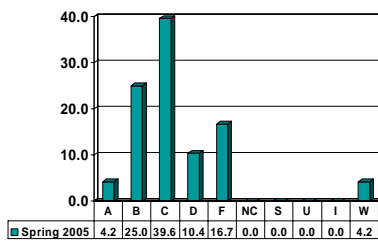
MATH 0200

Freshman UG – No. of Grades = 304



MATH 0300

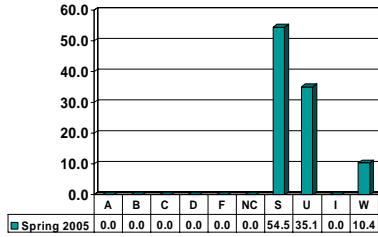
Freshman UG – No. of Grades = 48



Note: Percent columns show rounded figures and may not total 100%.

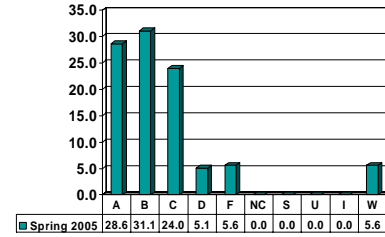
READING 0100

Freshman UG – No. of Grades = 77



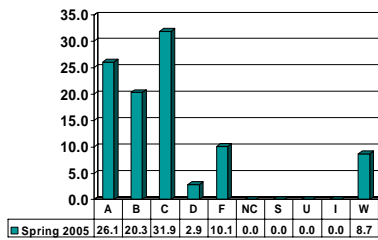
READING 0112

Freshman UG – No. of Grades = 196



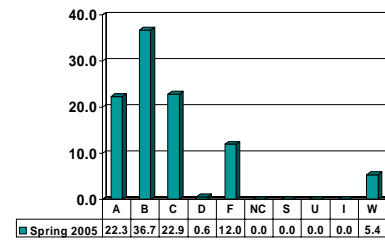
READING 0131

Freshman UG – No. of Grades = 69



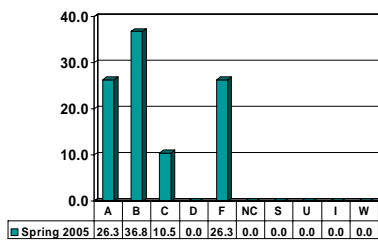
READING 0200

Freshman UG – No. of Grades = 166



READING 0300

Freshman UG – No. of Grades = 19



Note: Percent columns show rounded figures and may not total 100%.