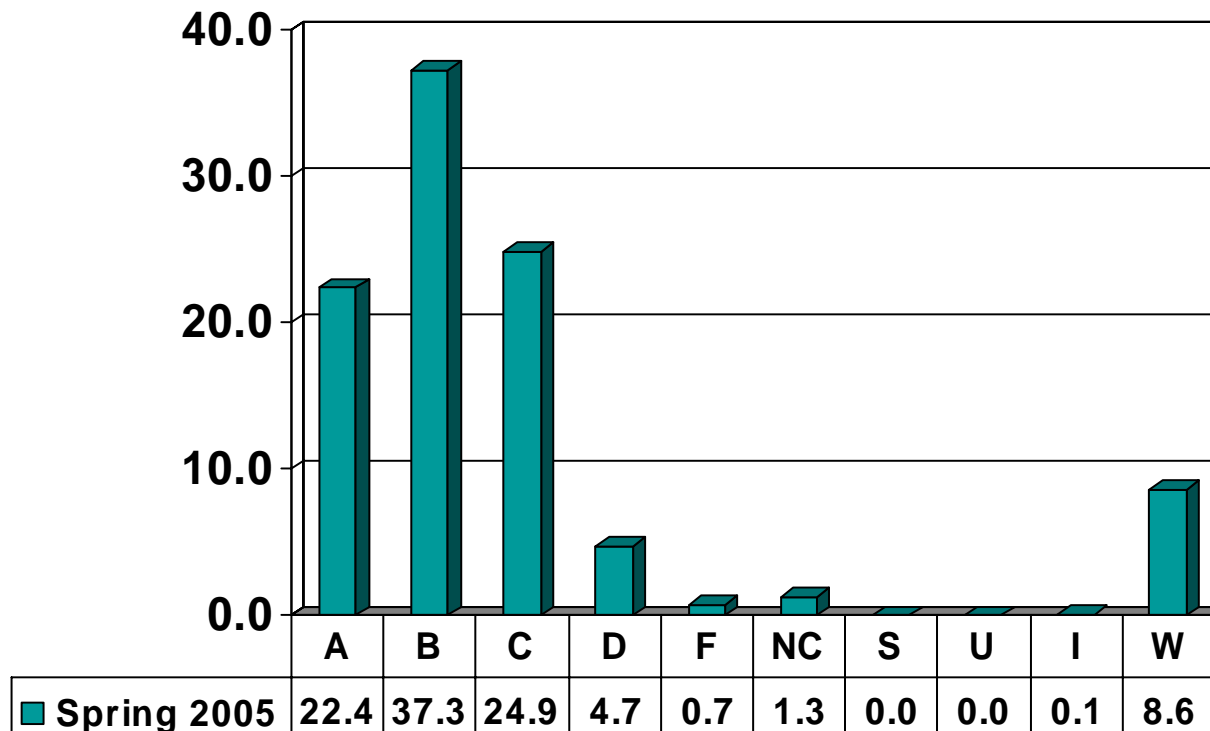


Prairie View A&M University
Grade Distribution Report
Spring 2005

Undergraduate Grade
Distribution by Course

NURSING

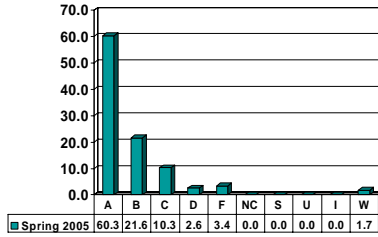
Undergraduate Courses – No. of Grades = 1339



Note: Percent columns show rounded figures and may not total 100%.

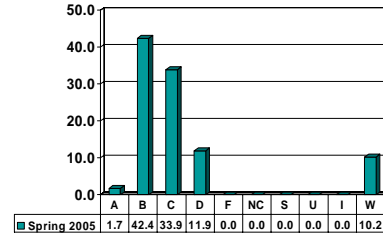
NURSING 2553

Sophomore UG – No. of Grades = 116



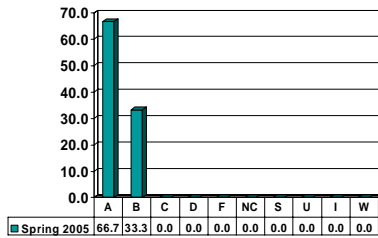
NURSING 3003

Junior UG – No. of Grades = 59



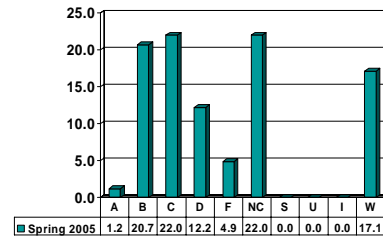
NURSING 3005

Junior UG – No. of Grades = 12



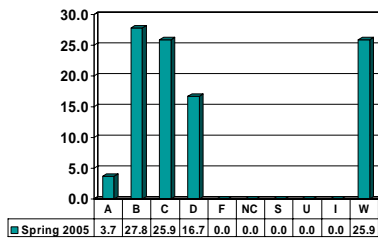
NURSING 3013

Junior UG – No. of Grades = 82



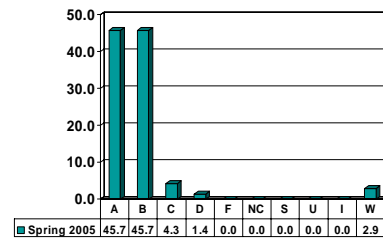
NURSING 3023

Junior UG – No. of Grades = 54



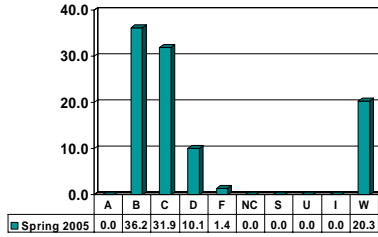
NURSING 3102

Junior UG – No. of Grades = 70



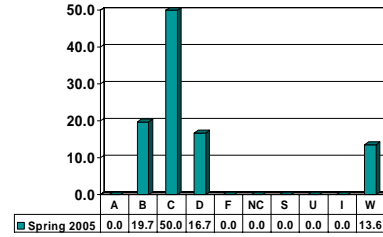
NURSING 3164

Junior UG – No. of Grades = 69



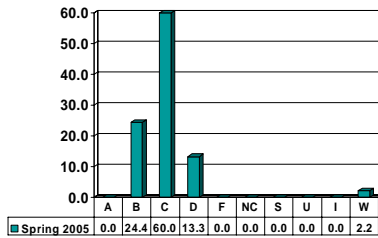
NURSING 3174

Junior UG – No. of Grades = 66



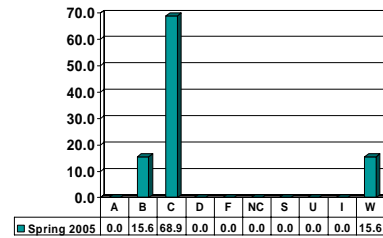
NURSING 3183

Junior UG – No. of Grades = 45



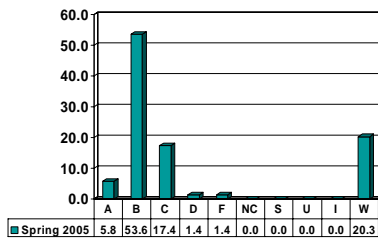
NURSING 3193

Junior UG – No. of Grades = 45



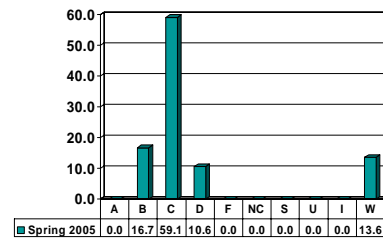
NURSING 3263

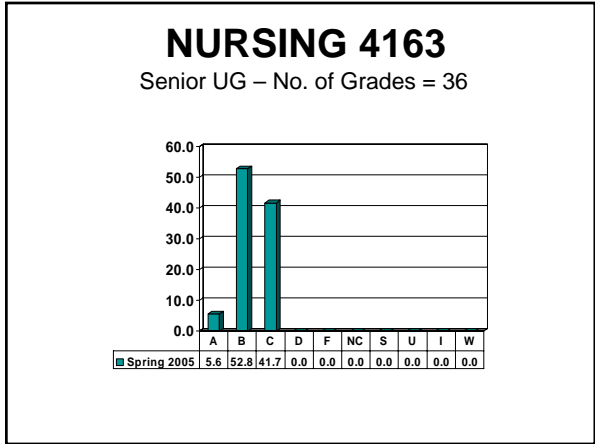
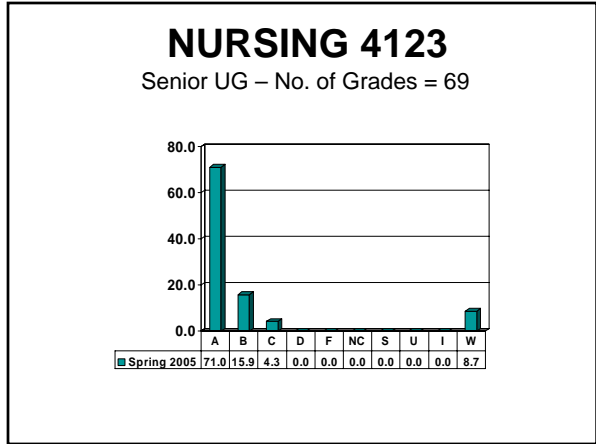
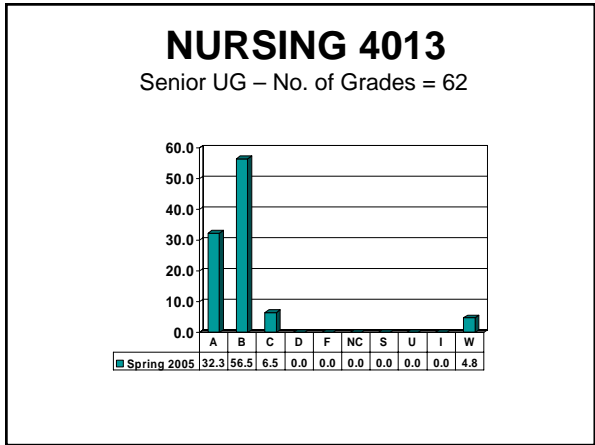
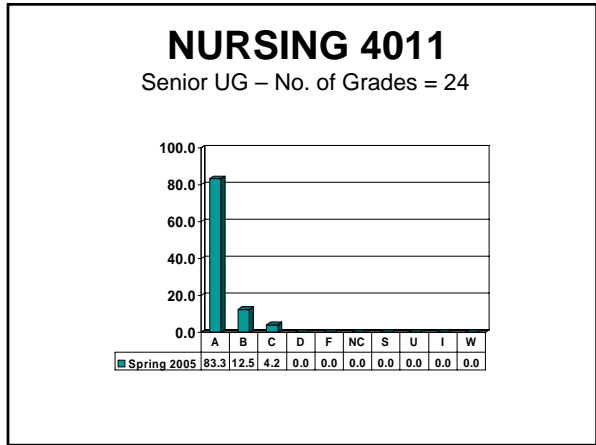
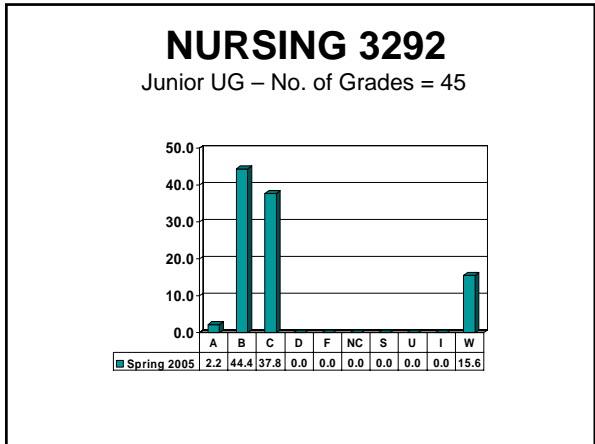
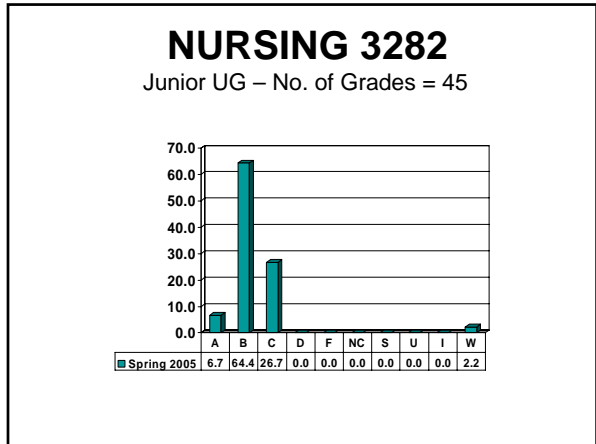
Junior UG – No. of Grades = 69



NURSING 3273

Junior UG – No. of Grades = 66

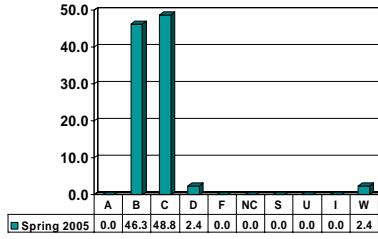




Note: Percent columns show rounded figures and may not total 100%.

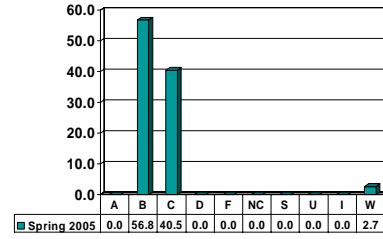
NURSING 4173

Senior UG – No. of Grades = 41



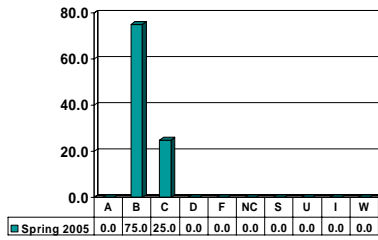
NURSING 4183

Senior UG – No. of Grades = 37



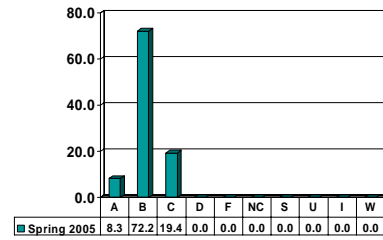
NURSING 4192

Senior UG – No. of Grades = 24



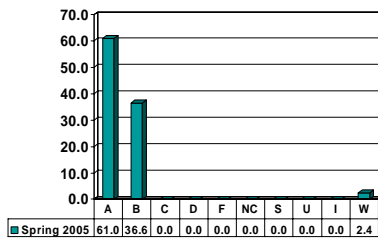
NURSING 4262

Senior UG – No. of Grades = 36



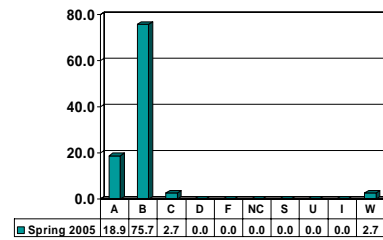
NURSING 4272

Senior UG – No. of Grades = 41



NURSING 4282

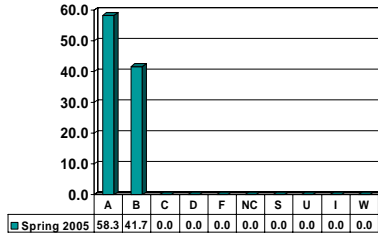
Senior UG – No. of Grades = 37



Note: Percent columns show rounded figures and may not total 100%.

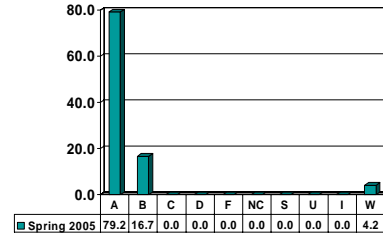
NURSING 4292

Senior UG – No. of Grades = 24



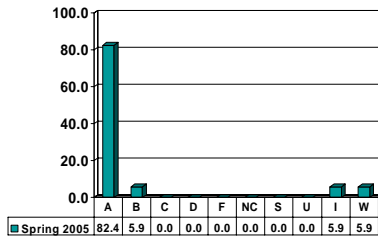
NURSING 4343

Senior UG – No. of Grades = 24



NURSING 4383

Senior UG – No. of Grades = 17



NURSING 4403

Senior UG – No. of Grades = 24

