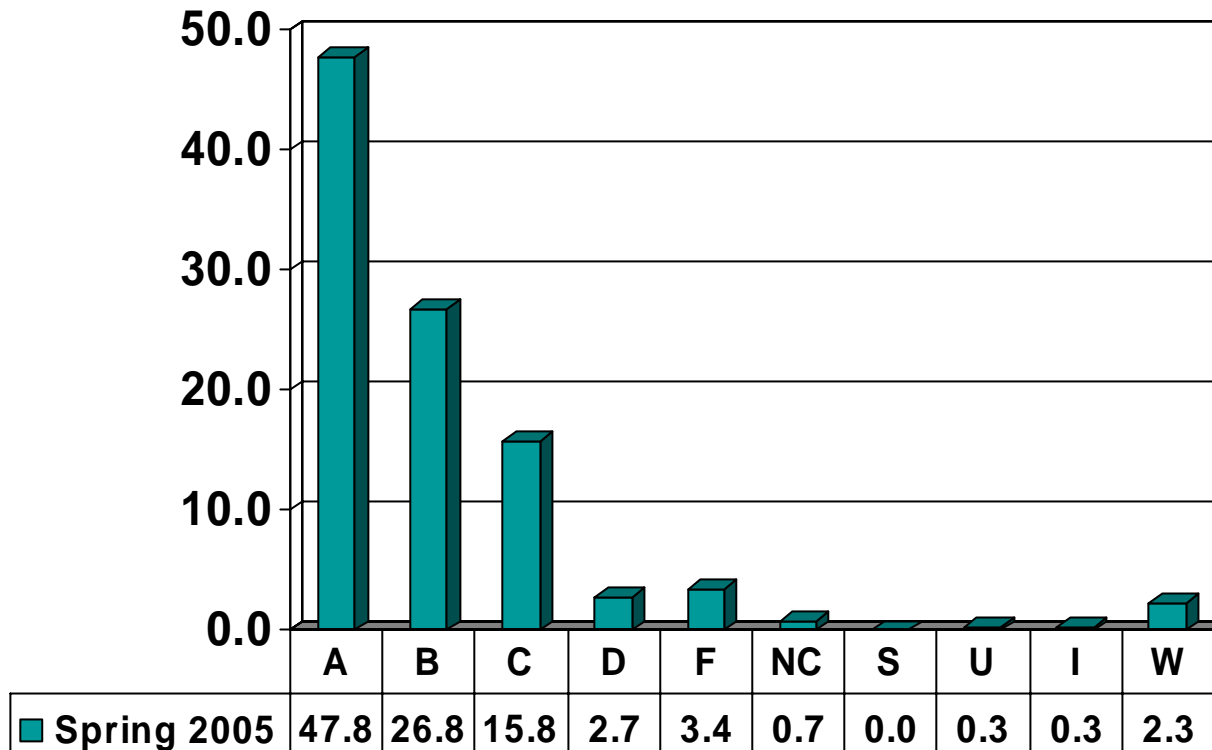


Prairie View A&M University
Grade Distribution Report
Spring 2005

Undergraduate Grade
Distribution by Course

AGRICULTURE & HUMAN SCIENCES

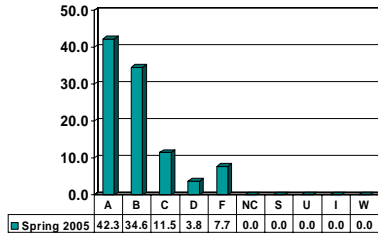
Undergraduate Courses – No. of Grades = 1,045



Percent columns show rounded figures and may not total 100%.

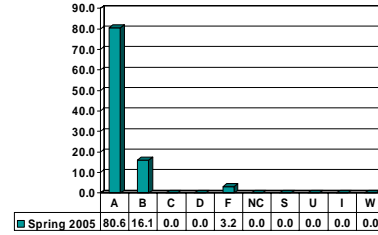
AGRICULTURAL ECONOMICS 2223

Sophomore UG – No. of Grades = 26



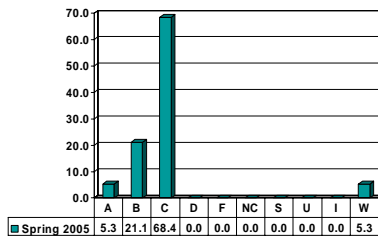
AGRICULTURAL ECONOMICS 3203

Junior UG – No. of Grades = 31



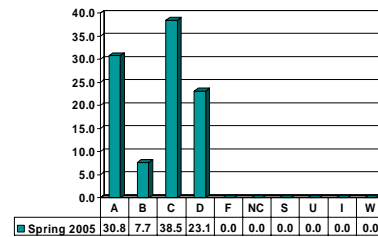
AGRICULTURAL ECONOMICS 3213

Junior UG – No. of Grades = 19



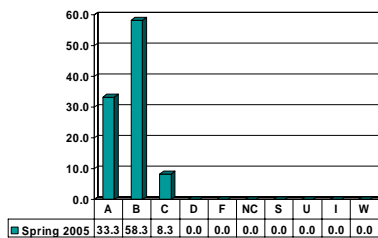
AGRICULTURAL ECONOMICS 3223

Junior UG – No. of Grades = 13



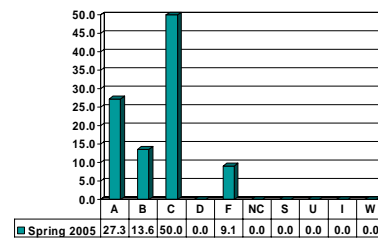
AGRICULTURAL ECONOMICS 3233

Junior UG – No. of Grades = 12



AGRICULTURAL ENGINEERING 3413

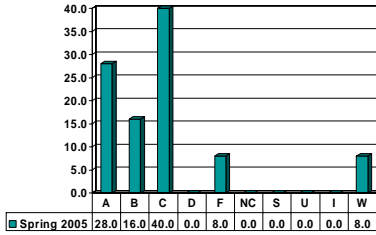
Junior UG – No. of Grades = 22



Note: Percent columns show rounded figures and may not total 100%.

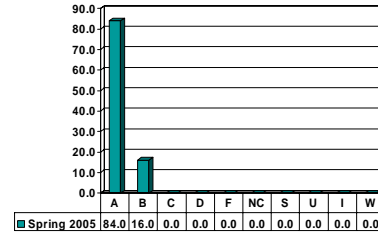
AGRICULTURAL ENGINEERING 4423

Senior UG – No. of Grades = 25



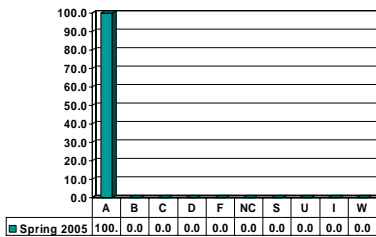
AGRICULTURE & HUMAN RESOURCES 3323

Junior UG – No. of Grades = 25



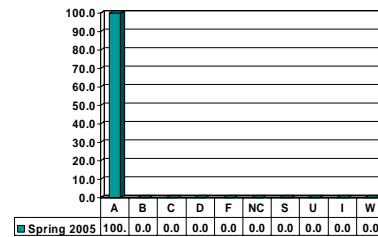
AGRICULTURE & HUMAN RESOURCES 3996

Junior UG – No. of Grades = 5



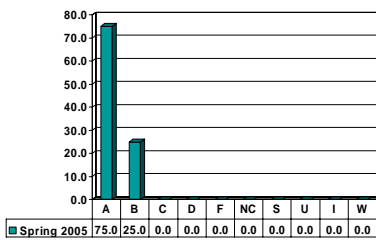
AGRICULTURE & HUMAN RESOURCES 4413

Senior UG – No. of Grades = 13



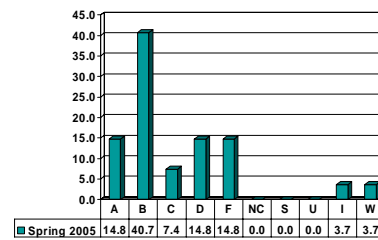
AGRICULTURE & HUMAN RESOURCES 4993

Senior UG – No. of Grades = 4



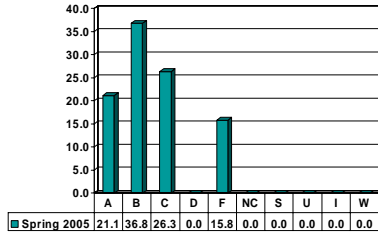
AGRONOMY 1703

Freshman UG – No. of Grades = 27



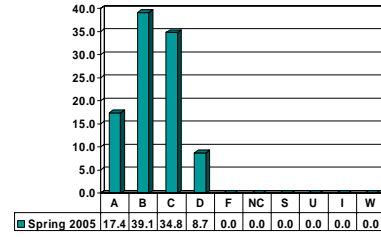
AGRONOMY 2603

Sophomore UG – No. of Grades = 19



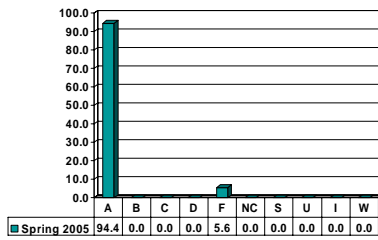
AGRONOMY 3733

Junior UG – No. of Grades = 23



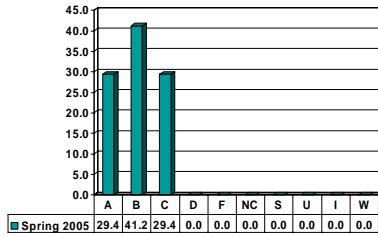
AGRONOMY 4613

Senior UG – No. of Grades = 18



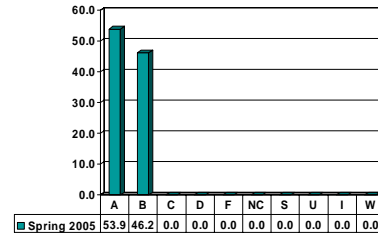
ANIMAL SCIENCE 1513

Freshman UG – No. of Grades = 17



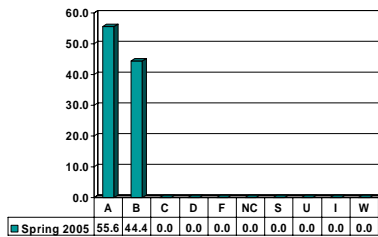
ANIMAL SCIENCE 2533

Sophomore UG – No. of Grades = 13



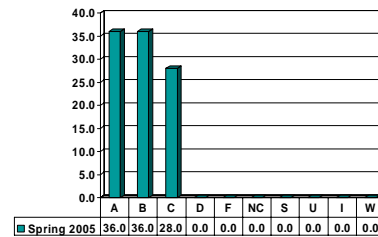
ANIMAL SCIENCE 2553

Sophomore UG – No. of Grades = 18



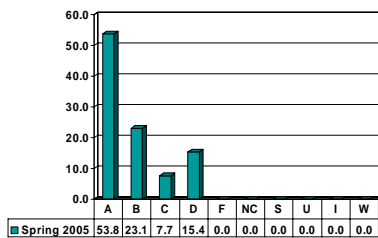
ANIMAL SCIENCE 3503

Junior UG – No. of Grades = 25



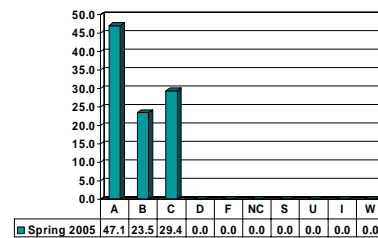
ANIMAL SCIENCE 3513

Junior UG – No. of Grades = 13



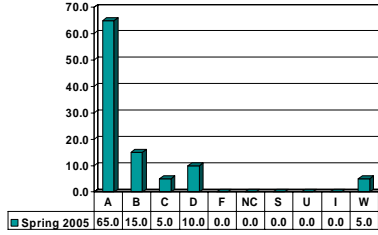
ANIMAL SCIENCE 3523

Junior UG – No. of Grades = 17



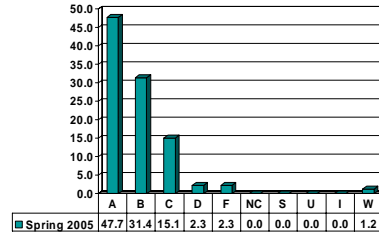
DESIGN 2113

Freshman UG – No. of Grades = 20



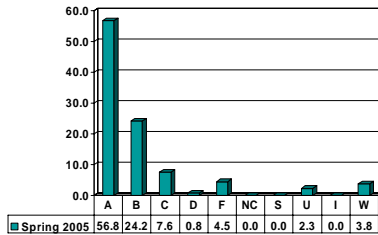
HUMAN DEVELOPMENT & THE FAMILY 2513

Sophomore UG – No. of Grades = 86



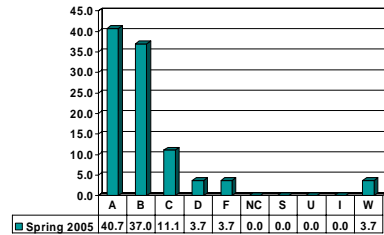
HUMAN DEVELOPMENT & THE FAMILY 2533

Sophomore UG – No. of Grades = 132



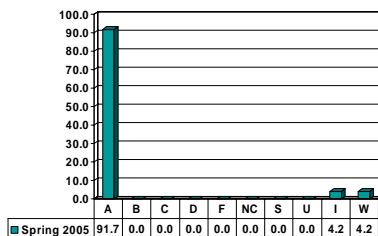
HUMAN DEVELOPMENT & THE FAMILY 2553

Sophomore UG – No. of Grades = 27



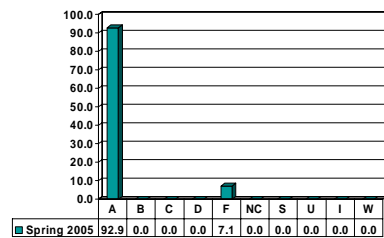
HUMAN DEVELOPMENT & THE FAMILY 3513

Junior UG – No. of Grades = 24



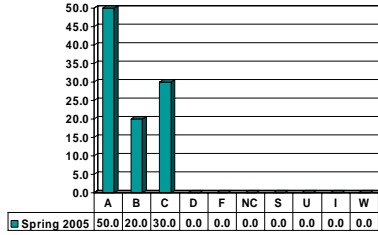
HUMAN DEVELOPMENT & THE FAMILY 4513

Senior UG – No. of Grades = 14



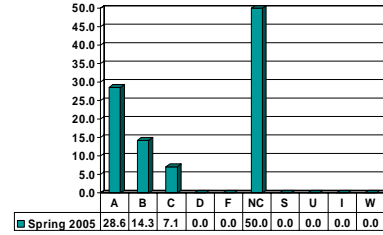
FOOD SCIENCE 3593

Junior UG – No. of Grades = 10



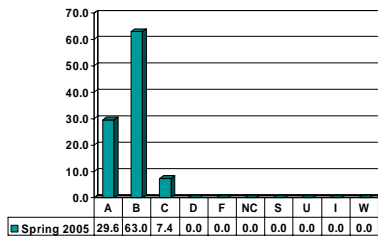
FOOD SCIENCE 4573

Senior UG – No. of Grades = 14



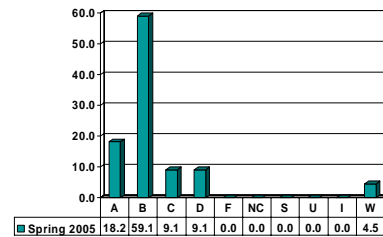
HUMAN NUTRITION & FOOD 2653

Sophomore UG – No. of Grades = 27



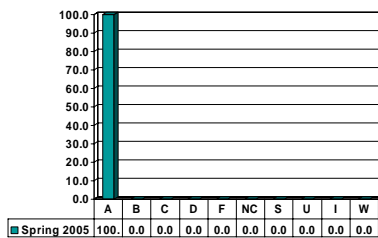
HUMAN NUTRITION & FOOD 2663

Sophomore UG – No. of Grades = 22



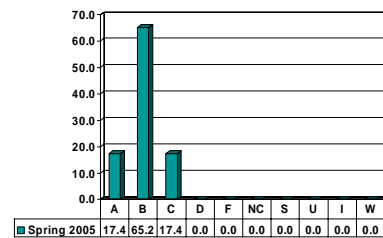
HUMAN NUTRITION & FOOD 4613

Senior UG – No. of Grades = 10



HUMAN NUTRITION & FOOD 4653

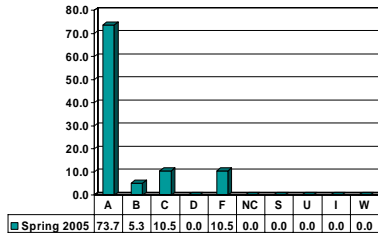
Senior UG – No. of Grades = 23



Note: Percent columns show rounded figures and may not total 100 %

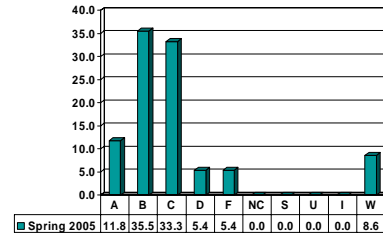
HUMAN SCIENCE 1313

Freshman UG – No. of Grades = 19



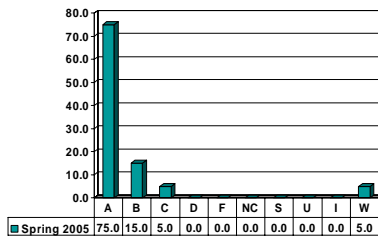
HUMAN SCIENCE 1343

Freshman UG – No. of Grades = 93



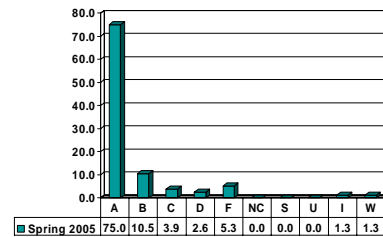
HUMAN SCIENCE 2373

Sophomore UG – No. of Grades = 20



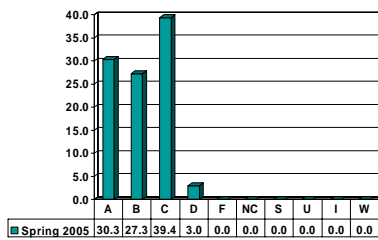
HUMAN SCIENCE 3373

Junior UG – No. of Grades = 76



HUMAN SCIENCE 4304

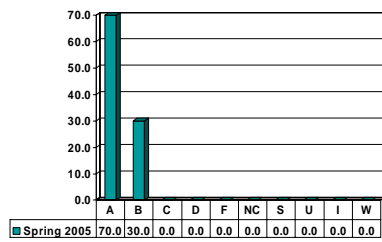
Senior UG – No. of Grades = 33



Note: Percent columns show rounded figures and may not total 100%.

MERCHANDISING & DESIGN 4773

Senior UG – No. of Grades = 10



Note: Percent columns show rounded figures and may not total 100%.