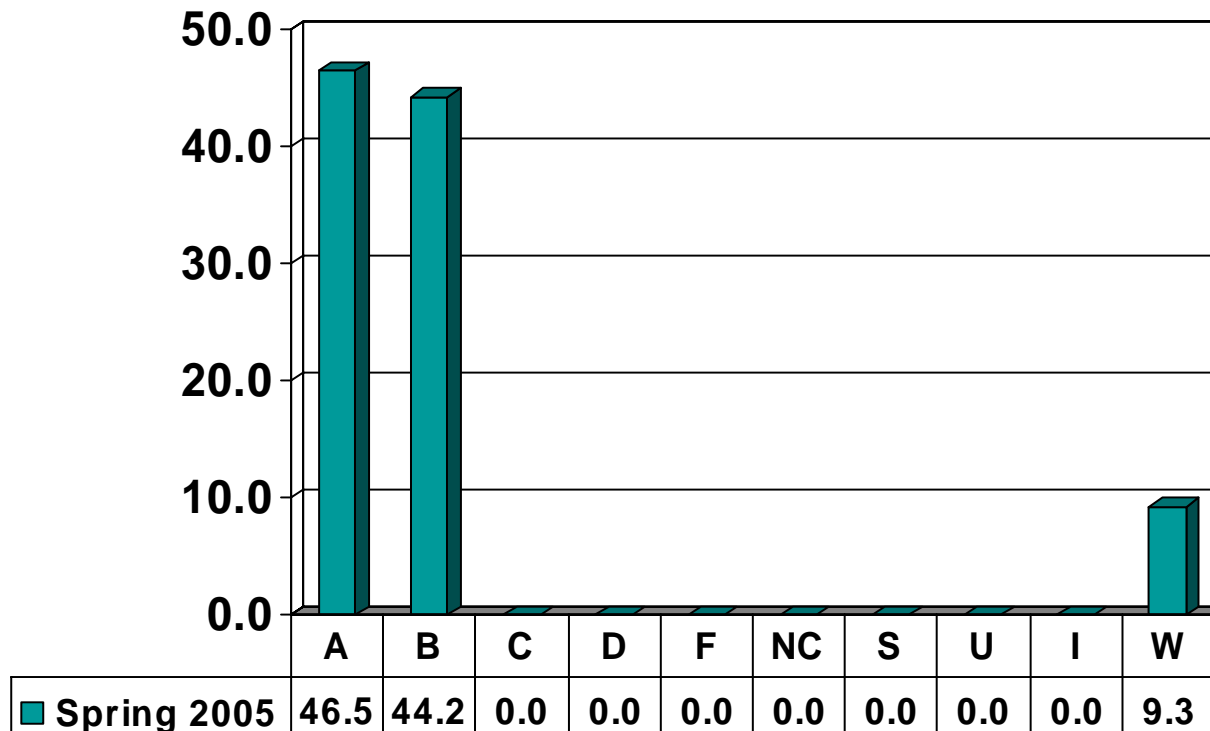


Prairie View A&M University
Grade Distribution Report
Spring 2005

Graduate Grade
Distribution by Course

NURSING

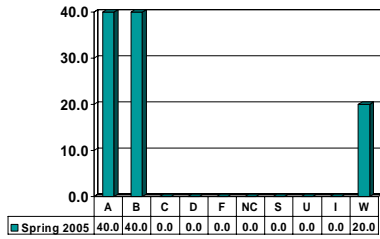
Graduate Courses – No. of Grades = 43



Note: Percent columns show rounded figures and may not total 100%.

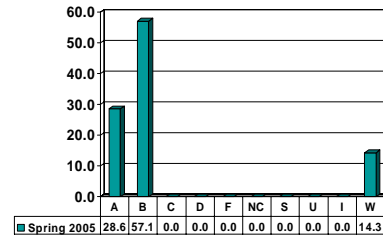
NURSING 5013

Graduates – No. of Grades = 5



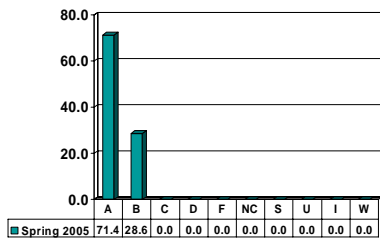
NURSING 5023

Graduates – No. of Grades = 7



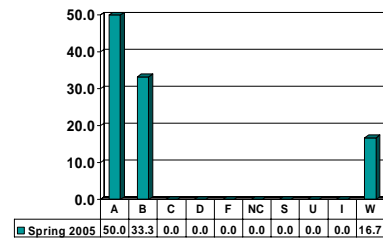
NURSING 5042

Graduates – No. of Grades = 7



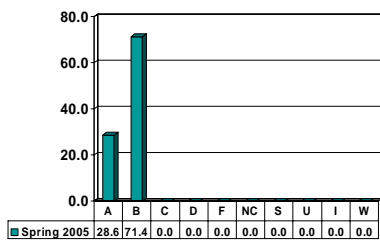
NURSING 5133

Graduates – No. of Grades = 6



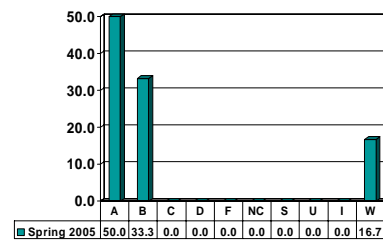
NURSING 5214

Graduates – No. of Grades = 7



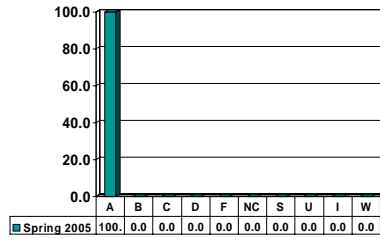
NURSING 5215

Graduates – No. of Grades = 6



NURSING 5713

Graduates – No. of Grades = 2



NURSING 5743

Graduates – No. of Grades = 3

