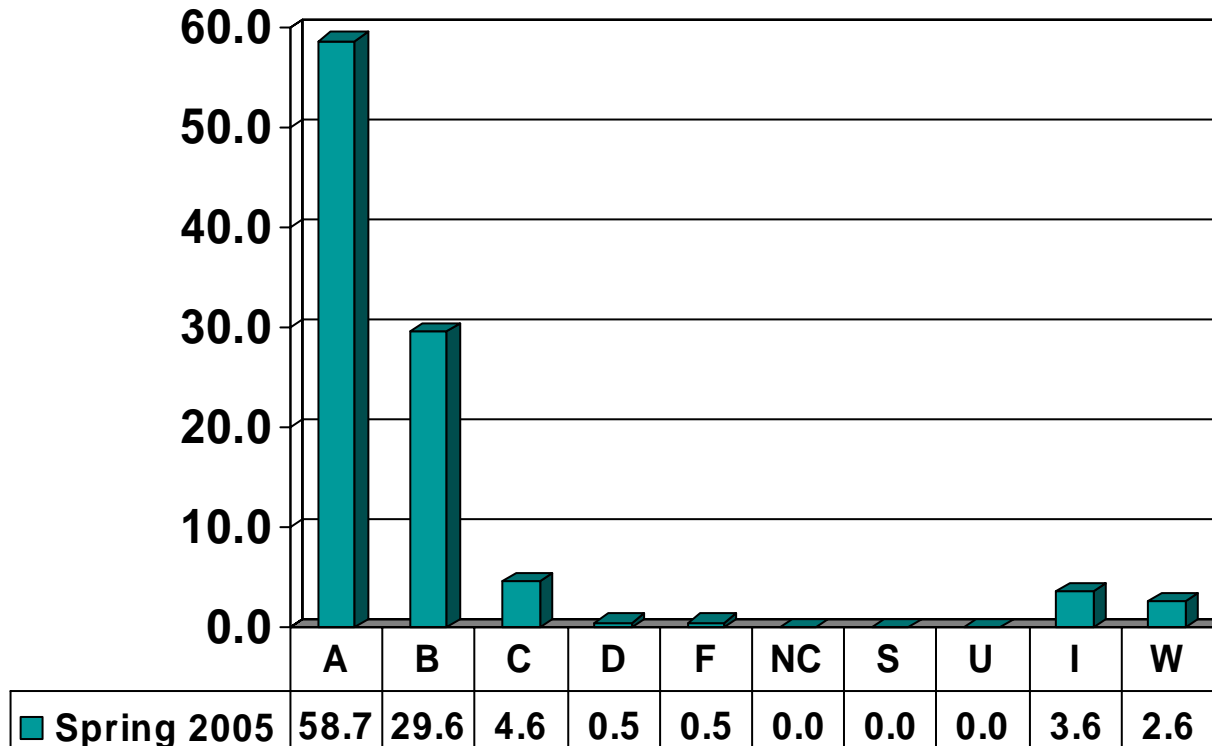


Prairie View A&M University
Grade Distribution Report
Spring 2005

Graduate Grade
Distribution by Course

ENGINEERING

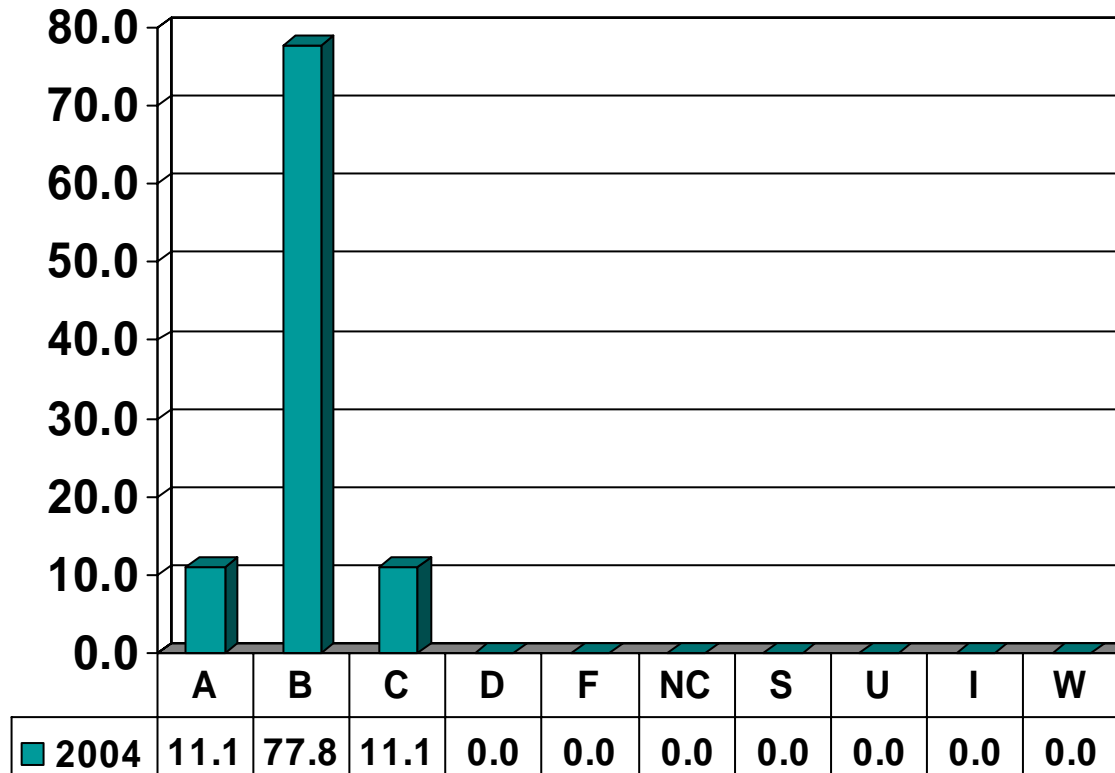
Graduate Courses – No. of Grades = 196



Note: Percent columns show rounded figures and may not total 100%.

CIVIL ENGINEERING

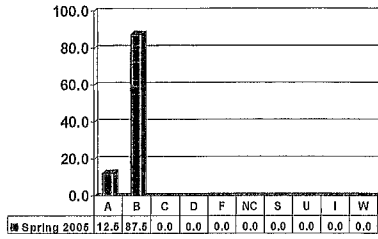
Graduate Courses – No. of Grades = 8



Note: Percent columns show rounded figures and may not total 100%.

CIVIL ENGINEERING 5173

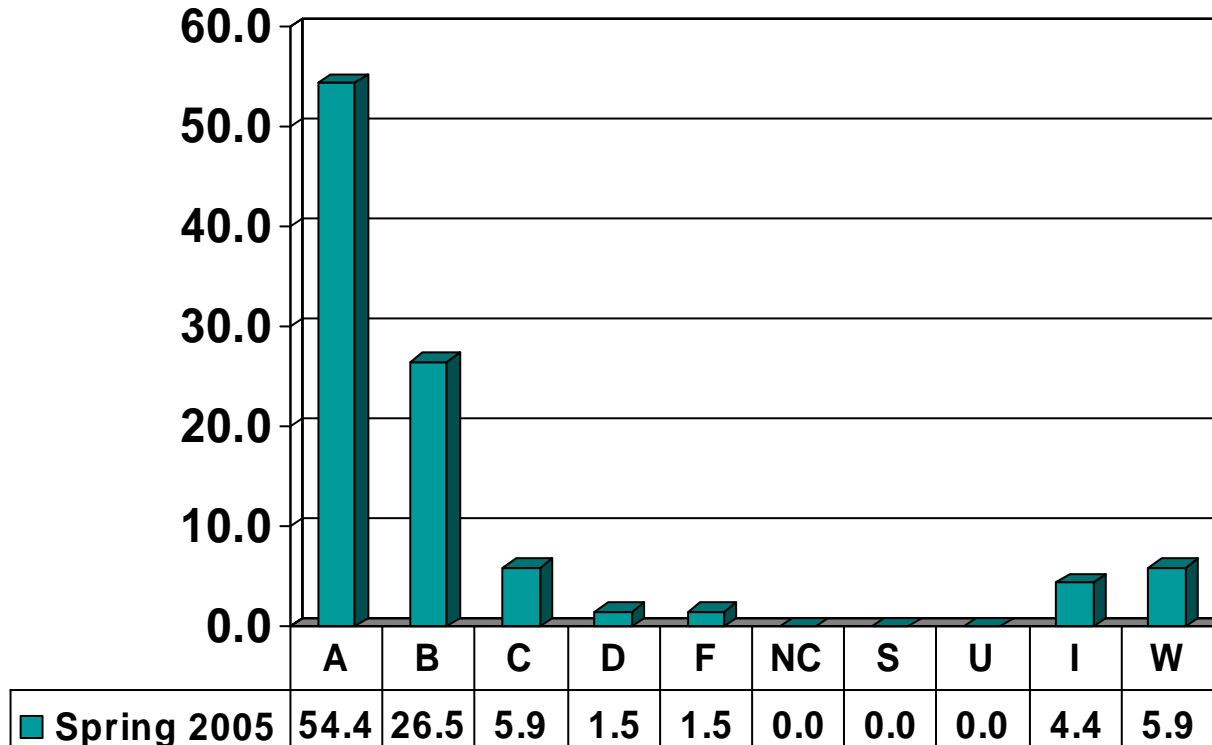
Graduates – No. of Grades = 8



Note: Percent columns show rounded figures and may not total 100%.

COMPUTER SCIENCE

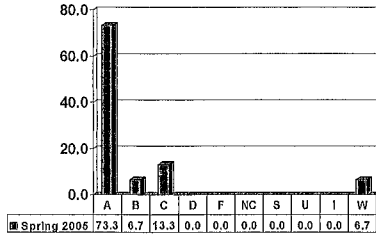
Graduate Courses – No. of Grades = 68



Note: Percent columns show rounded figures and may not total 100%.

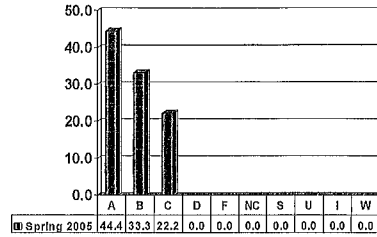
COMPUTER SCIENCE 5003

Graduates – No. of Grades = 15



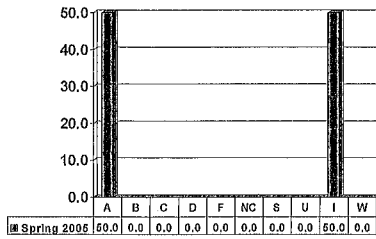
COMPUTER SCIENCE 5133

Graduates – No. of Grades = 9



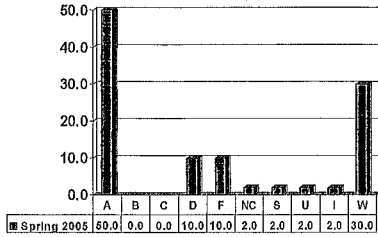
COMPUTER SCIENCE 5906

Graduates – No. of Grades = 2



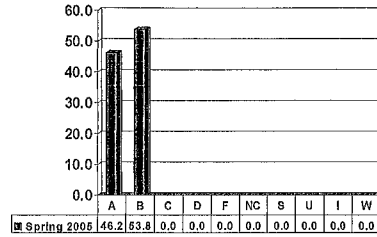
COMPUTER INFORMATION SYSTEMS 5043

Graduates – No. of Grades = 10



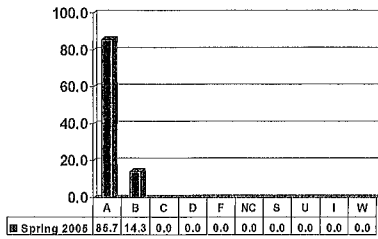
COMPUTER INFORMATION SYSTEMS 5143

Graduates – No. of Grades = 13



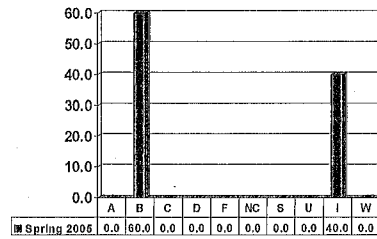
COMPUTER INFORMATION SYSTEMS 5183

Graduates – No. of Grades = 7



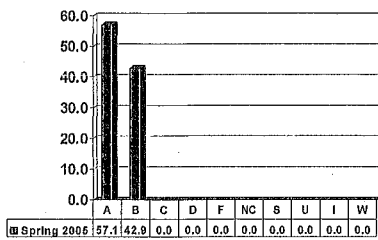
COMPUTER INFORMATION SYSTEMS 5913

Graduates – No. of Grades = 5



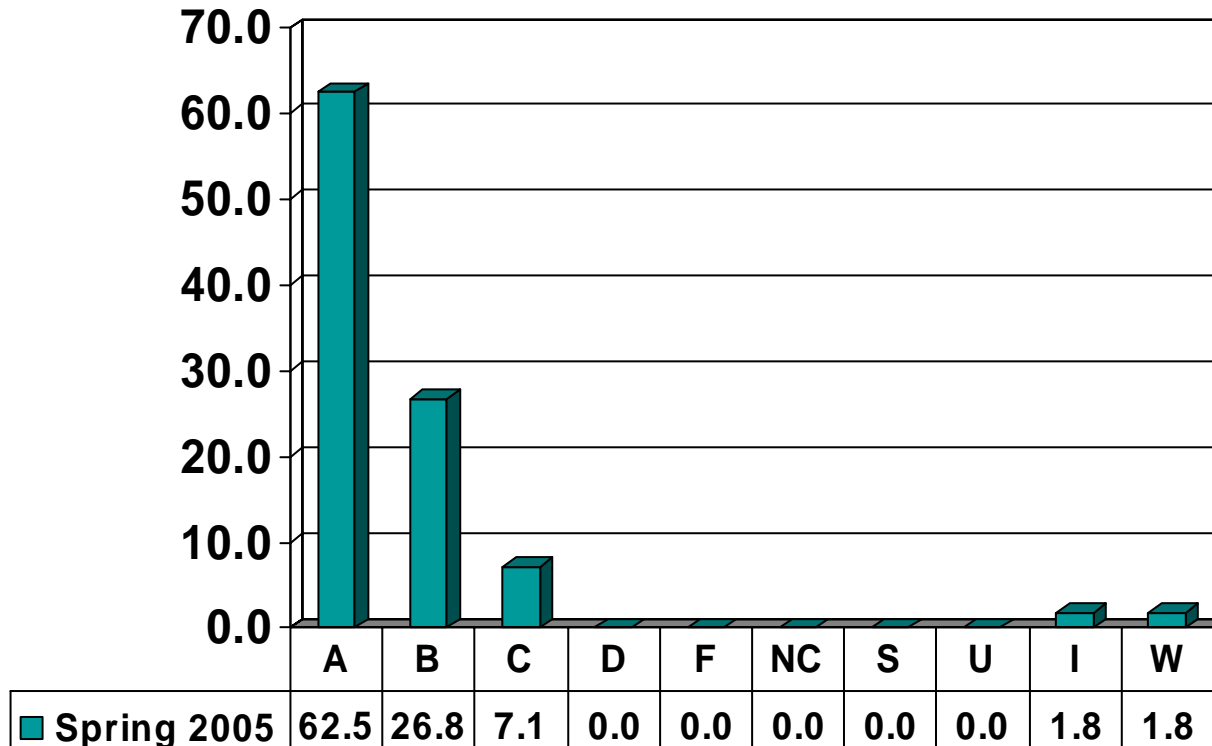
COMPUTER INFORMATION SYSTEMS 5983

Graduates – No. of Grades = 7



ELECTRICAL ENGINEERING

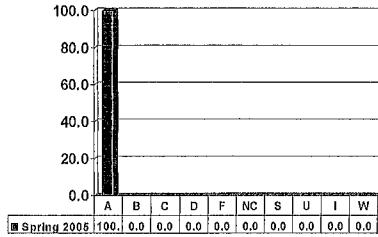
Graduate Courses – No. of Grades = 56



Note: Percent columns show rounded figures and may not total 100%.

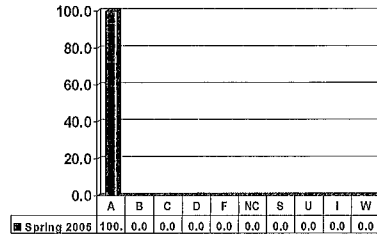
ELECTRICAL ENGINEERING 5966

Graduates – No. of Grades = 1



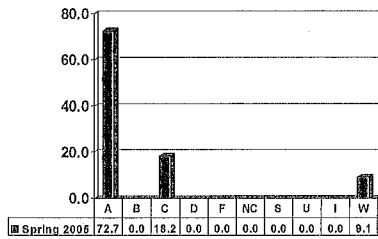
ELECTRICAL ENGINEERING 6021

Graduates – No. of Grades = 4



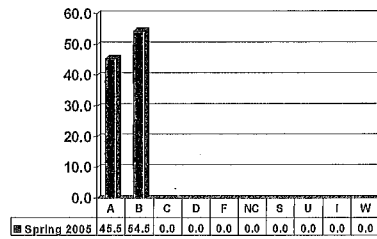
ELECTRICAL ENGINEERING 6153

Graduates – No. of Grades = 11



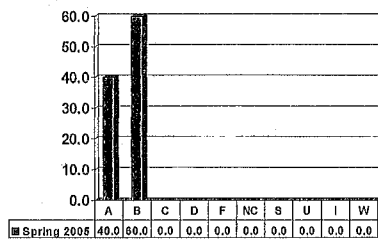
ELECTRICAL ENGINEERING 6203

Graduates – No. of Grades = 11



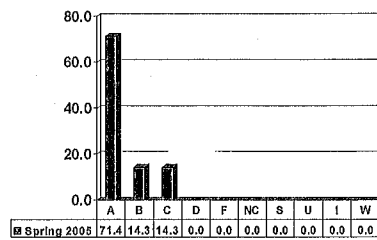
ELECTRICAL ENGINEERING 6233

Graduates – No. of Grades = 5



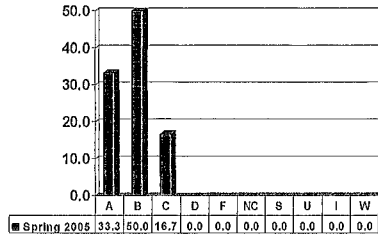
ELECTRICAL ENGINEERING 6243

Graduates – No. of Grades = 7



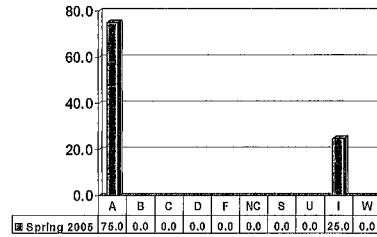
ELECTRICAL ENGINEERING 6413

Graduates – No. of Grades = 6



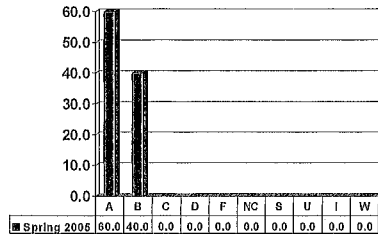
ELECTRICAL ENGINEERING 6433

Graduates – No. of Grades = 4



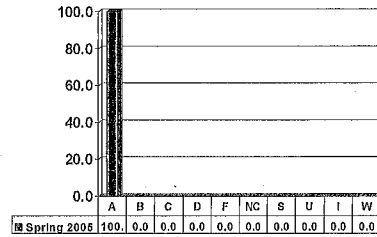
ELECTRICAL ENGINEERING 6503

Graduates – No. of Grades = 5



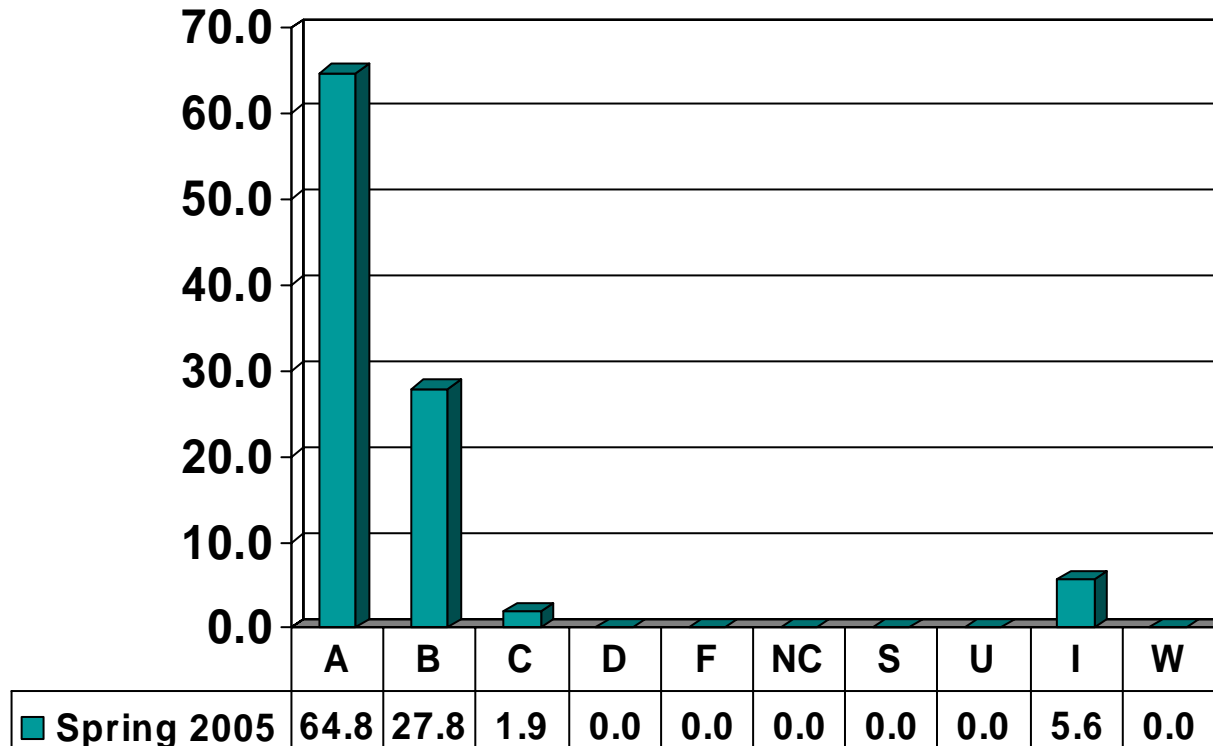
ELECTRICAL ENGINEERING 7026

Graduates – No. of Grades = 2



GENERAL ENGINEERING

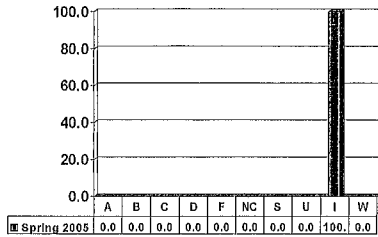
Graduate Courses – No. of Grades =54



Note: Percent columns show rounded figures and may not total 100%.

GENERAL ENGINEERING 5086

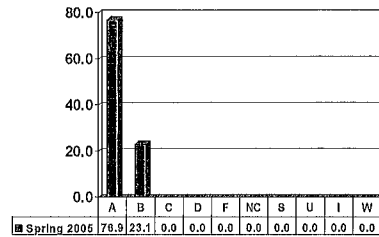
Graduates – No. of Grades = 1



GENERAL ENGINEERING 5133

5133

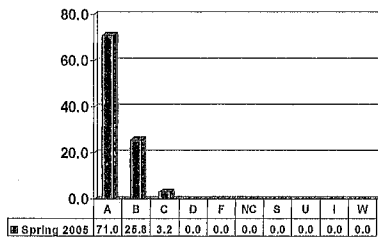
Graduates – No. of Grades = 13



GENERAL ENGINEERING 5193

5193

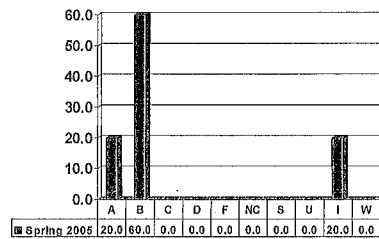
Graduates – No. of Grades = 31



GENERAL ENGINEERING 5303

5303

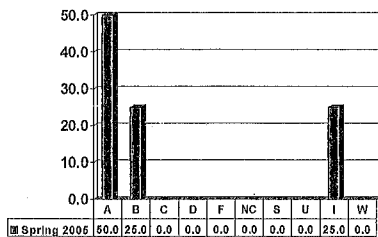
Graduates – No. of Grades = 5



GENERAL ENGINEERING 5393

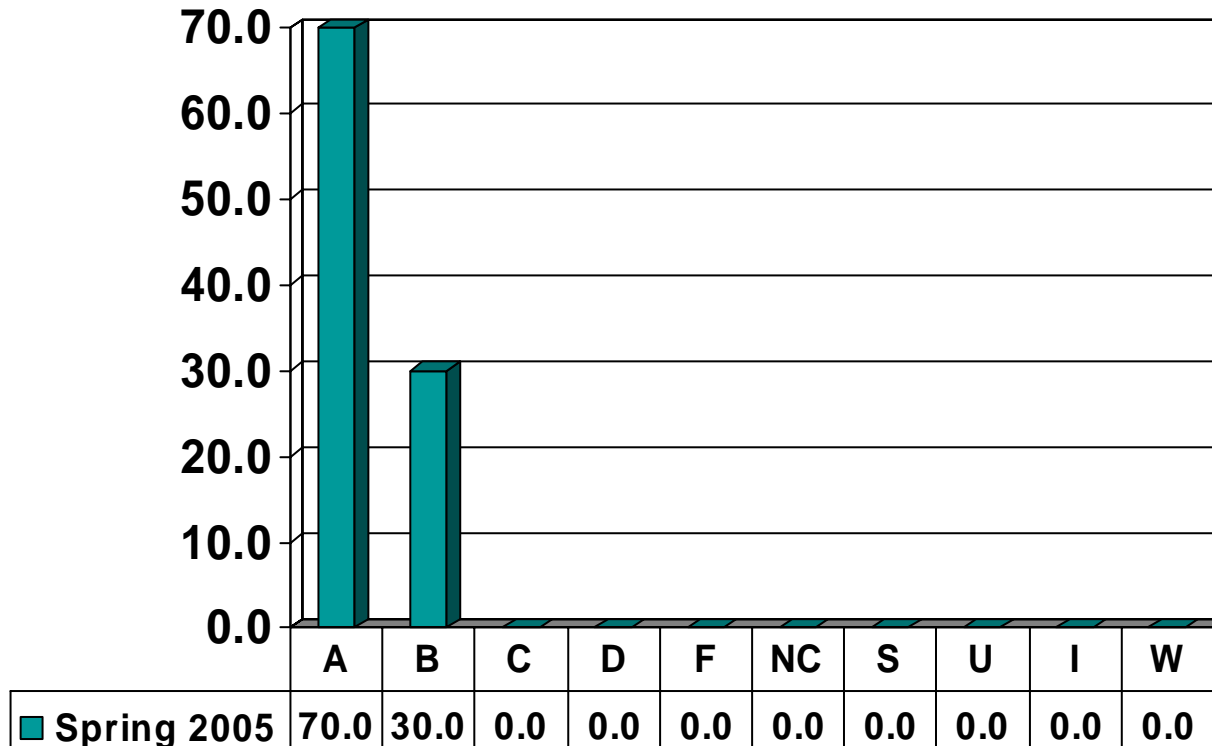
5393

Graduates – No. of Grades = 4



MECHANICAL ENGINEERING

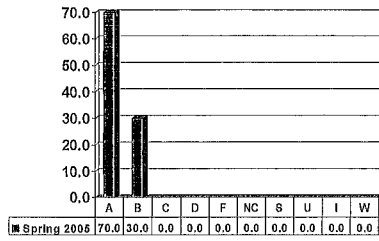
Graduate Courses – No. of Grades = 10



Note: Percent columns show rounded figures and may not total 100%.

MECHANICAL ENGINEERING 5253

Graduates – No. of Grades = 10



Note: Percent columns show rounded figures and may not total 100%.