

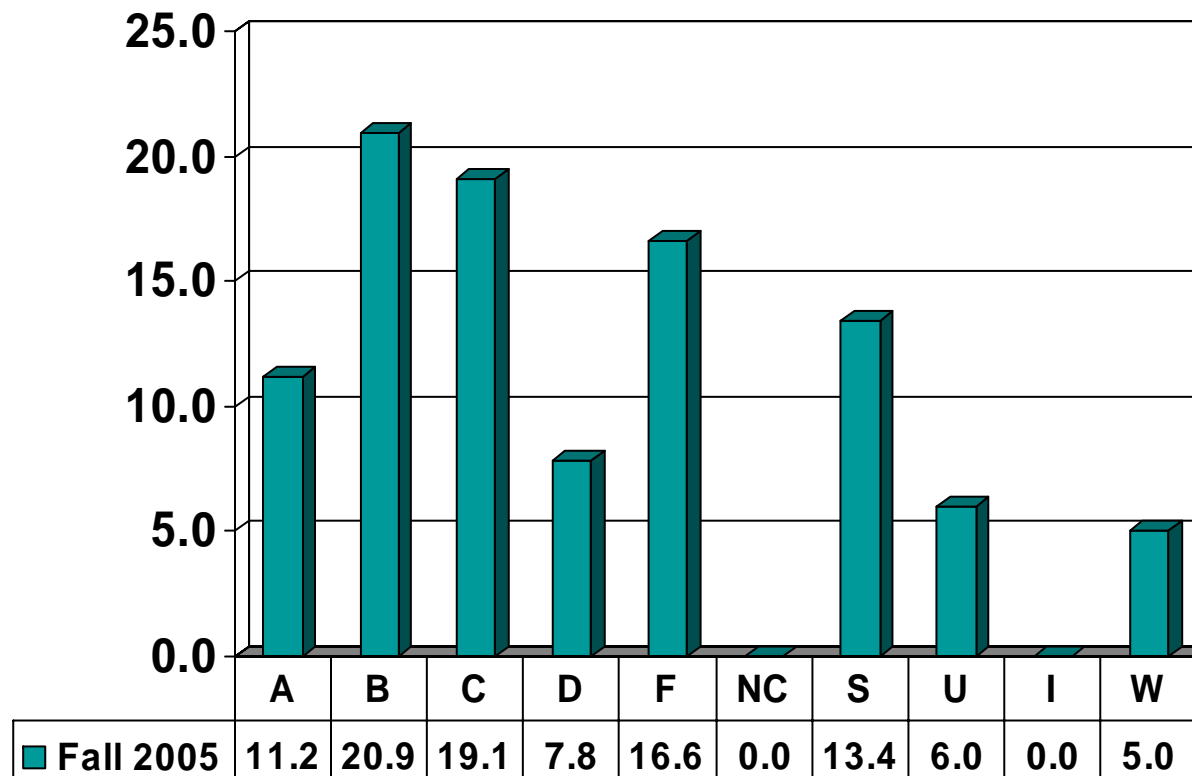
Prairie View A&M University
Grade Distribution Report
Fall 2004* & FALL 2005
COMPARISONS

Undergraduate Grade
Distribution by Course

*When available

UNIVERSITY COLLEGE

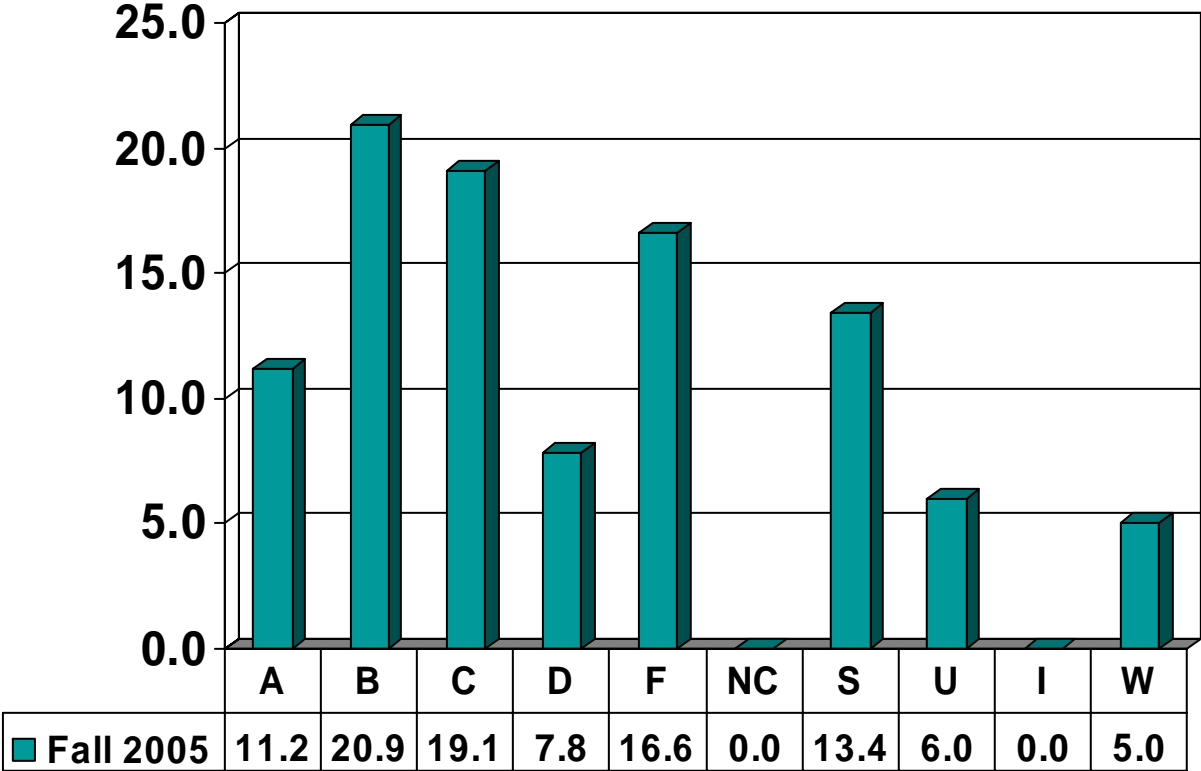
Undergraduate Courses – No. of Grades = 1942



Note: Percent columns show rounded figures and may not total 100%.

DEVELOPMENTAL STUDIES

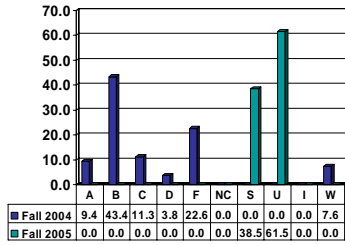
Undergraduate Courses – No. of Grades = 1942



Note: Percent columns show rounded figures and may not total 100%.

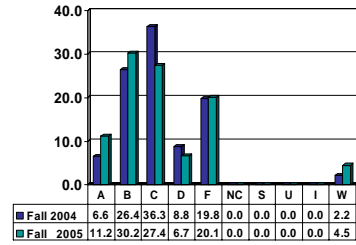
ENGLISH 0100

Freshman UG – No. of Grades = 13



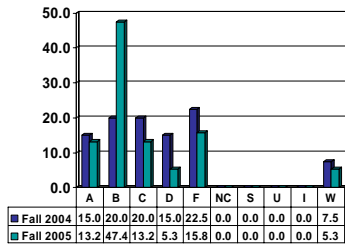
ENGLISH 0112

Freshman UG – No. of Grades = 179



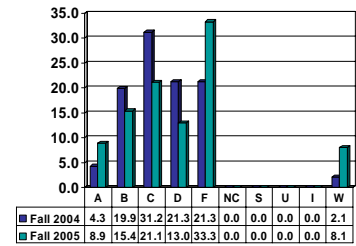
ENGLISH 0131

Freshman UG – No. of Grades = 38



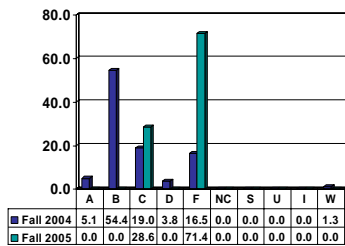
ENGLISH 0200

Freshman UG – No. of Grades = 123



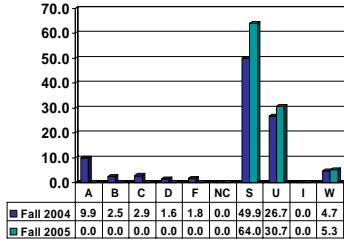
ENGLISH 0300

Freshman UG – No. of Grades = 7



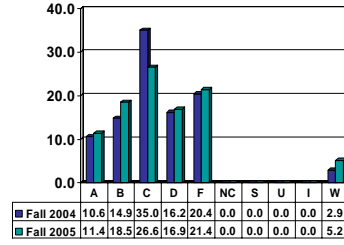
MATHEMATICS 0100

Freshman UG – No. of Grades = 228



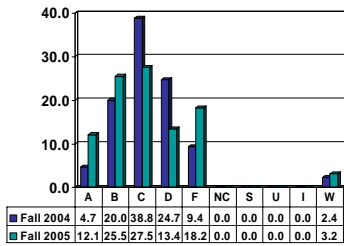
MATHEMATICS 0113

Freshman UG – No. of Grades = 308



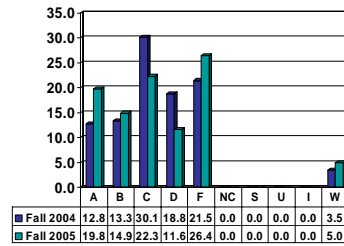
MATHEMATICS 0133

Freshman UG – No. of Grades = 247



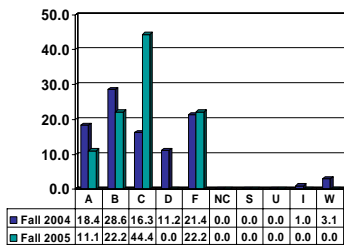
MATHEMATICS 0200

Freshman UG – No. of Grades = 242



MATHEMATICS 0300

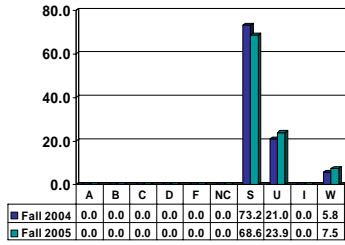
Freshman UG – No. of Grades = 9



Note: Percent columns show rounded figures and may not total 100%.

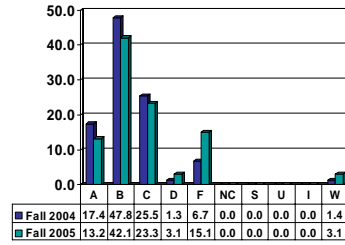
READING 0100

Freshman UG – No. of Grades = 159



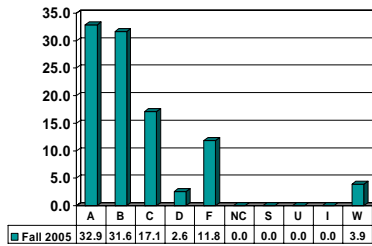
READING 0112

Freshman UG – No. of Grades = 159



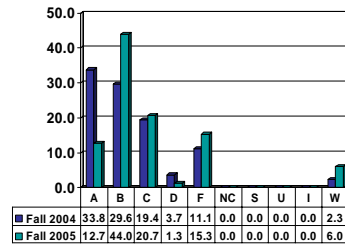
READING 0131

Freshman UG – No. of Grades = 76



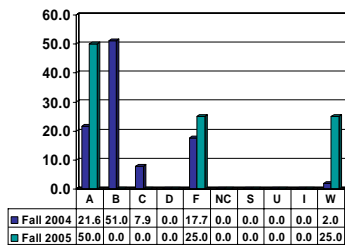
READING 0200

Freshman UG – No. of Grades = 150



READING 0300

Freshman UG – No. of Grades = 4



Note: Percent columns show rounded figures and may not total 100%.