

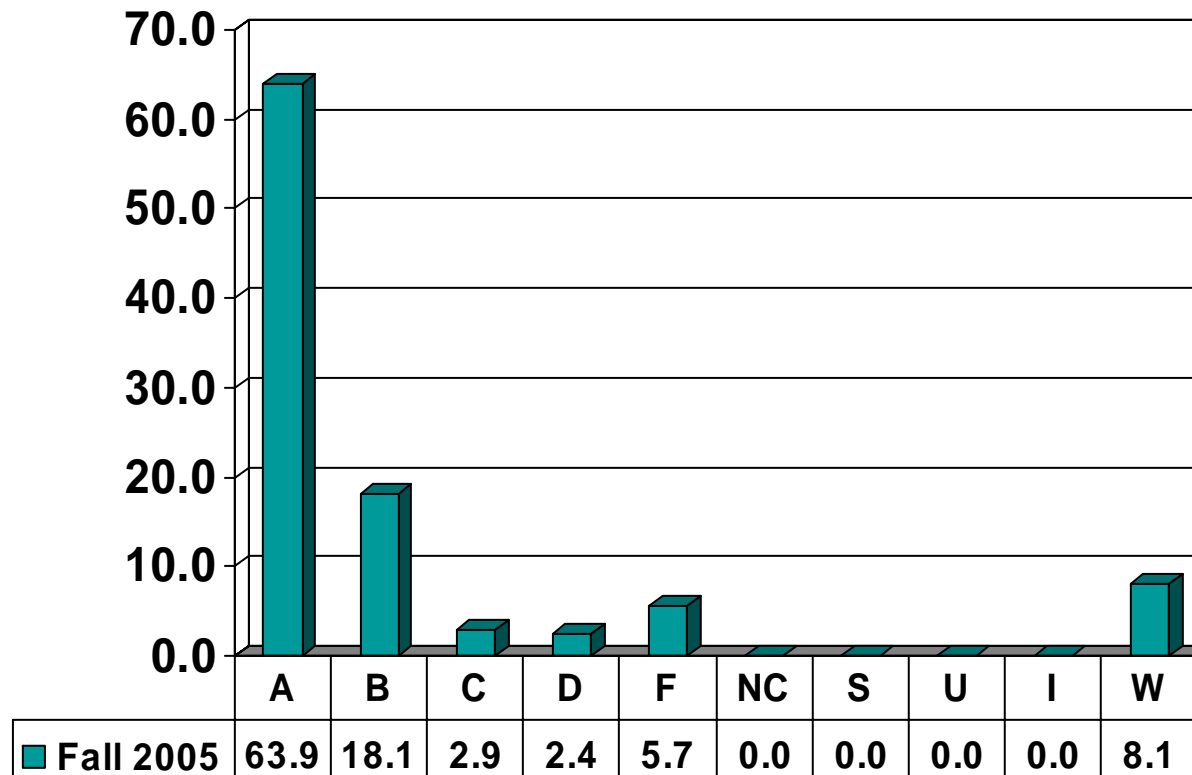
Prairie View A&M University
Grade Distribution Report
Fall 2004* & FALL 2005
COMPARISONS

Graduate Grade
Distribution by Course

*when available

SCHOOL OF ARCHITECTURE

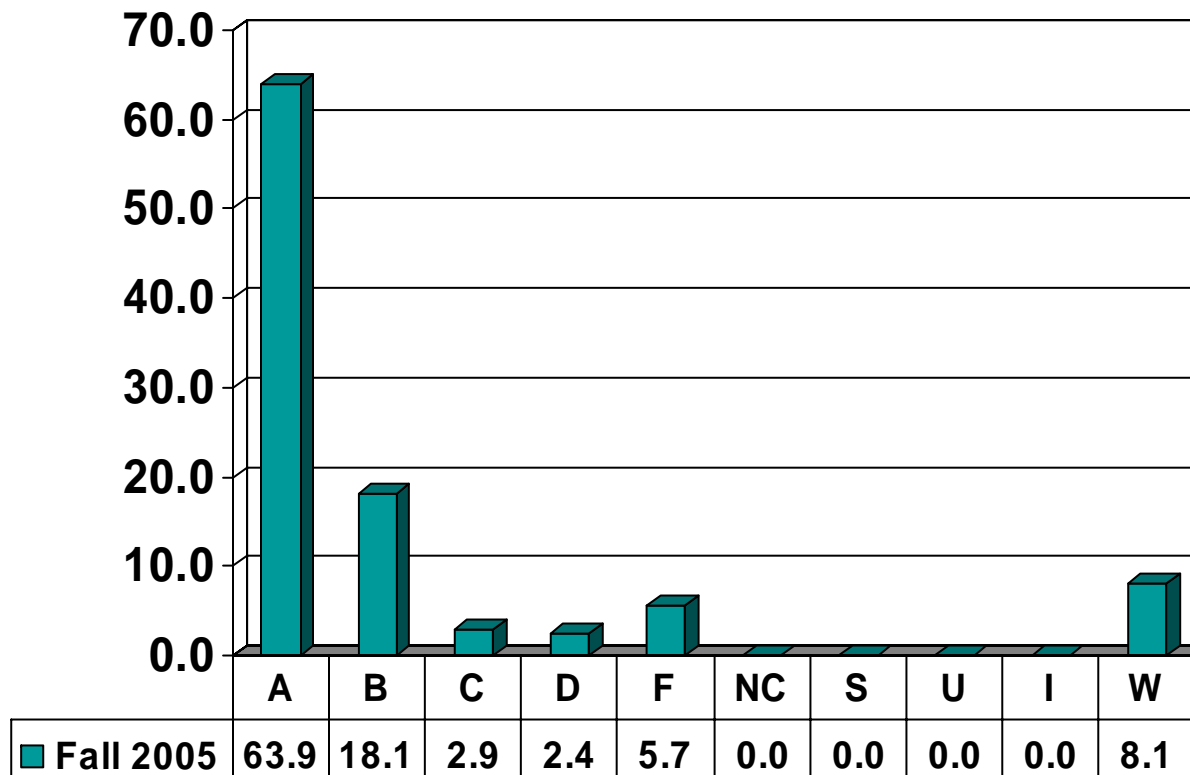
Graduate Courses – No. of Grades = 210



Note: Percent columns show rounded figures and may not total 100%.

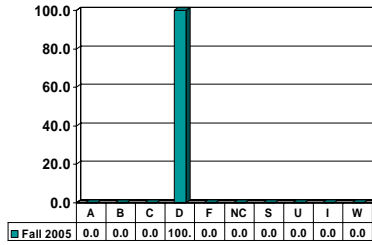
ARCHITECTURE

Graduate Courses – No. of Grades = 210



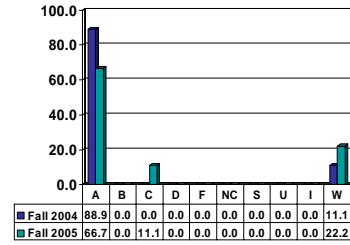
ARCHITECTURE 5506

Graduates – No. of Grades = 1



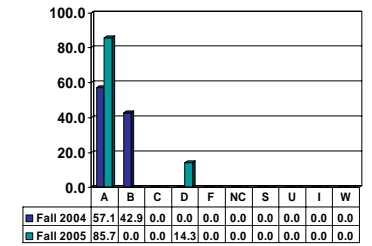
ARCHITECTURE 5513

Graduates – No. of Grades = 9



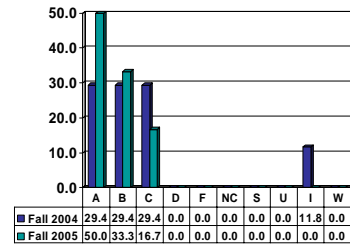
ARCHITECTURE 5566

Graduates – No. of Grades = 7



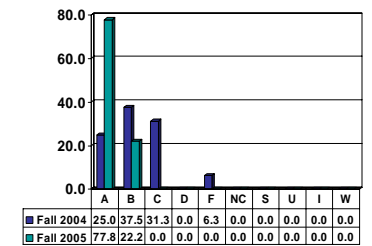
ARCHITECTURE 5593

Graduates – No. of Grades = 6



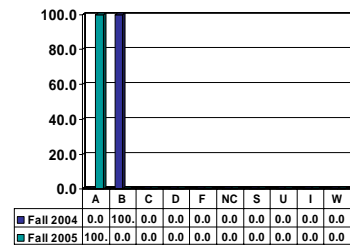
ARCHITECTURE 5973

Graduates – No. of Grades = 9



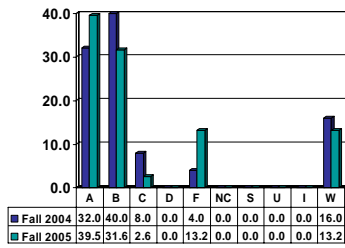
ARCHITECTURE 5996

Graduates – No. of Grades = 2



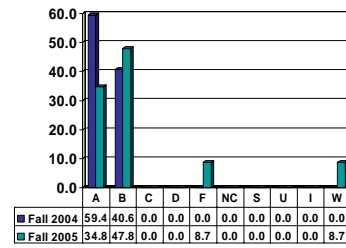
COMMUNITY DEVELOPMENT 5013

Graduates – No. of Grades = 38



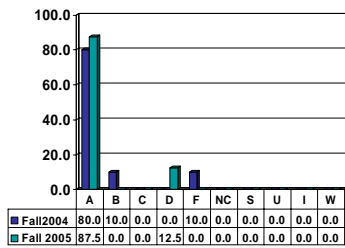
COMMUNITY DEVELOPMENT 5016

Graduates – No. of Grades = 23



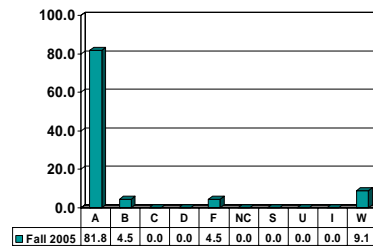
COMMUNITY DEVELOPMENT 5103

Graduates – No. of Grades = 8



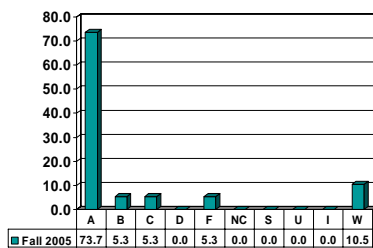
COMMUNITY DEVELOPMENT 5213

Graduates – No. of Grades = 22



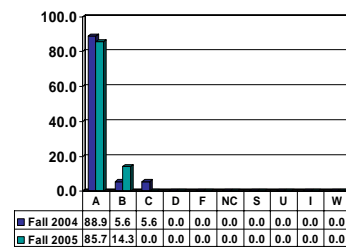
COMMUNITY DEVELOPMENT 5343

Graduates – No. of Grades = 19



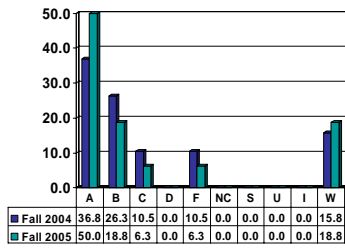
COMMUNITY DEVELOPMENT 5406

Graduates – No. of Grades = 14



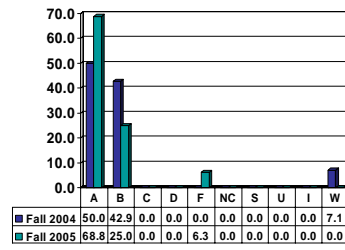
COMMUNITY DEVELOPMENT 5503

Graduates— No. of Grades = 16



COMMUNITY DEVELOPMENT 5513

Graduates— No. of Grades = 16



COMMUNITY DEVELOPMENT 5603

Graduates— No. of Grades = 20

