

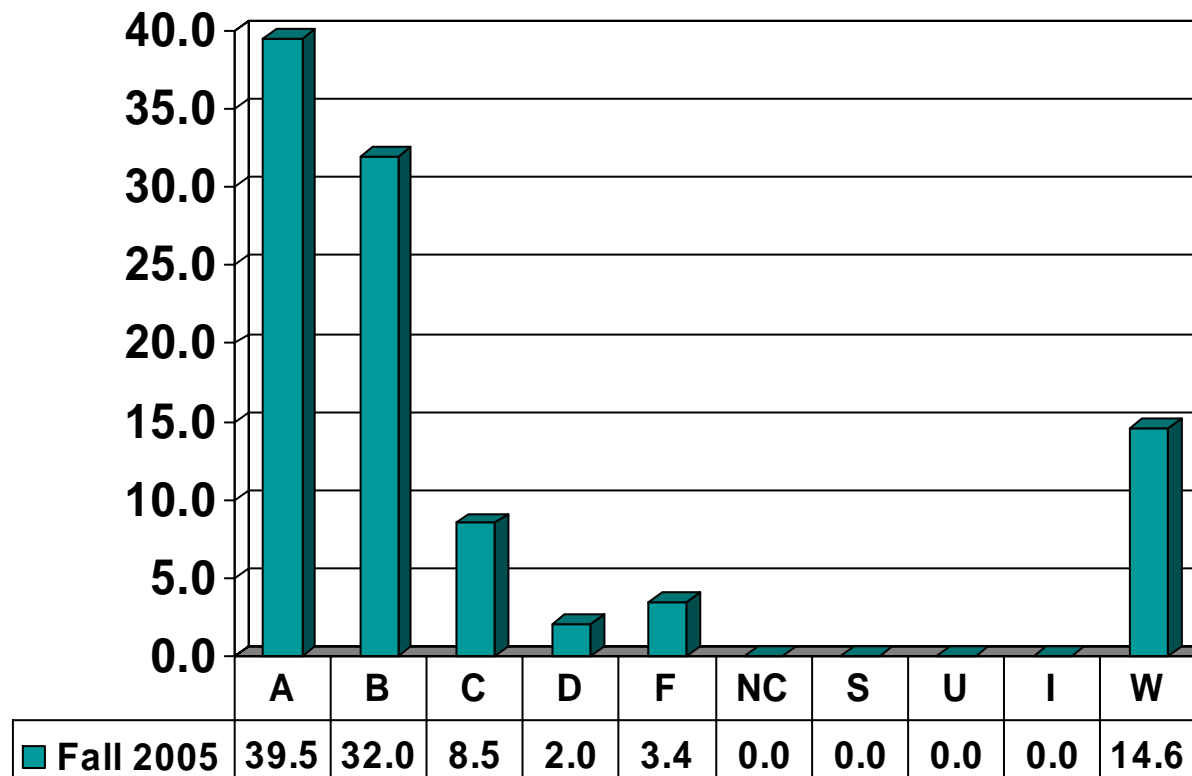
Prairie View A&M University
Grade Distribution Report
Fall 2004* & FALL 2005
COMPARISONS

Graduate Grade
Distribution by Course

*when available

BUSINESS

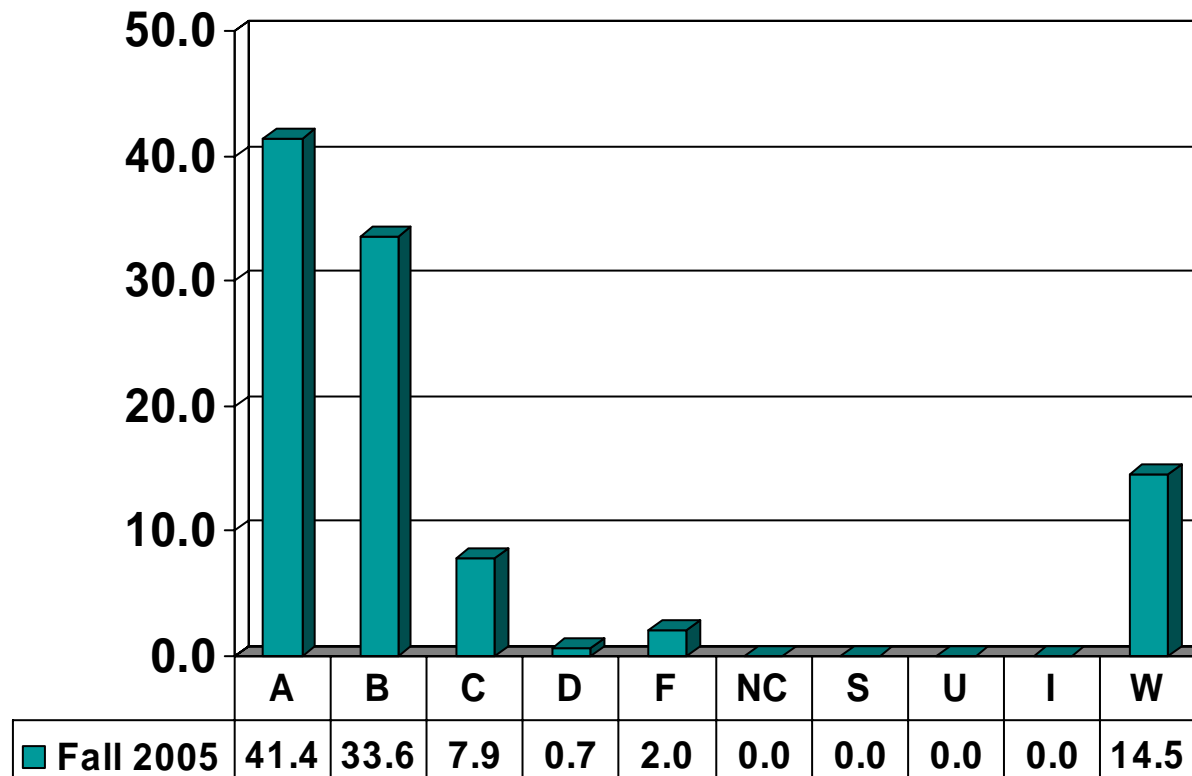
Graduate Courses – No. of Grades = 294



Note: Percent columns show rounded figures and may not total 100%.

Accounting, Finance & Management Information Systems

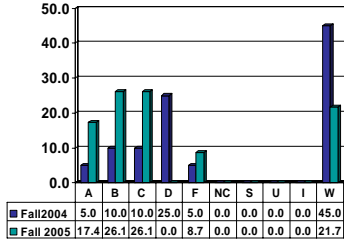
Graduate Courses – No. of Grades = 152



Note: Percent columns show rounded figures and may not total 100%.

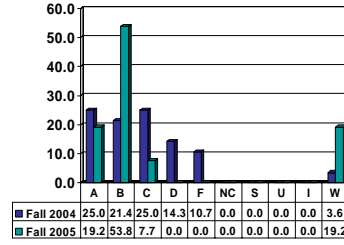
ACCOUNTING 5003

Graduates – No. of Grades = 23



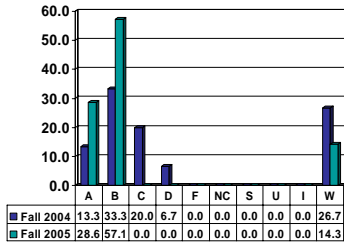
ACCOUNTING 5103

Graduates – No. of Grades = 26



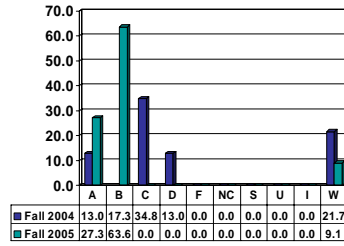
ACCOUNTING 5113

Graduates – No. of Grades = 7



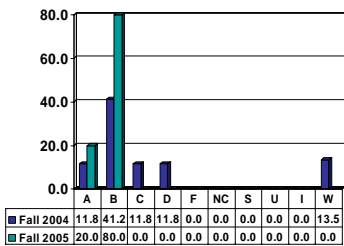
ACCOUNTING 5123

Graduates – No. of Grades = 11



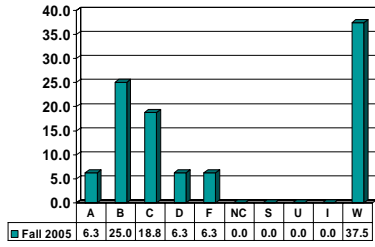
ACCOUNTING 5143

Graduates – No. of Grades = 5



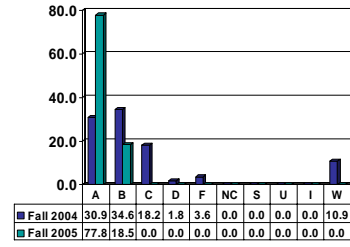
FINANCE 5003

Graduates – No. of Grades = 16



FINANCE 5103

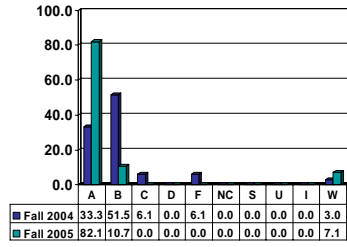
Graduates – No. of Grades = 27



Note: Percent columns show rounded figures and may not total 100%.

MANAGEMENT INFORMATION SYSTEMS 5203

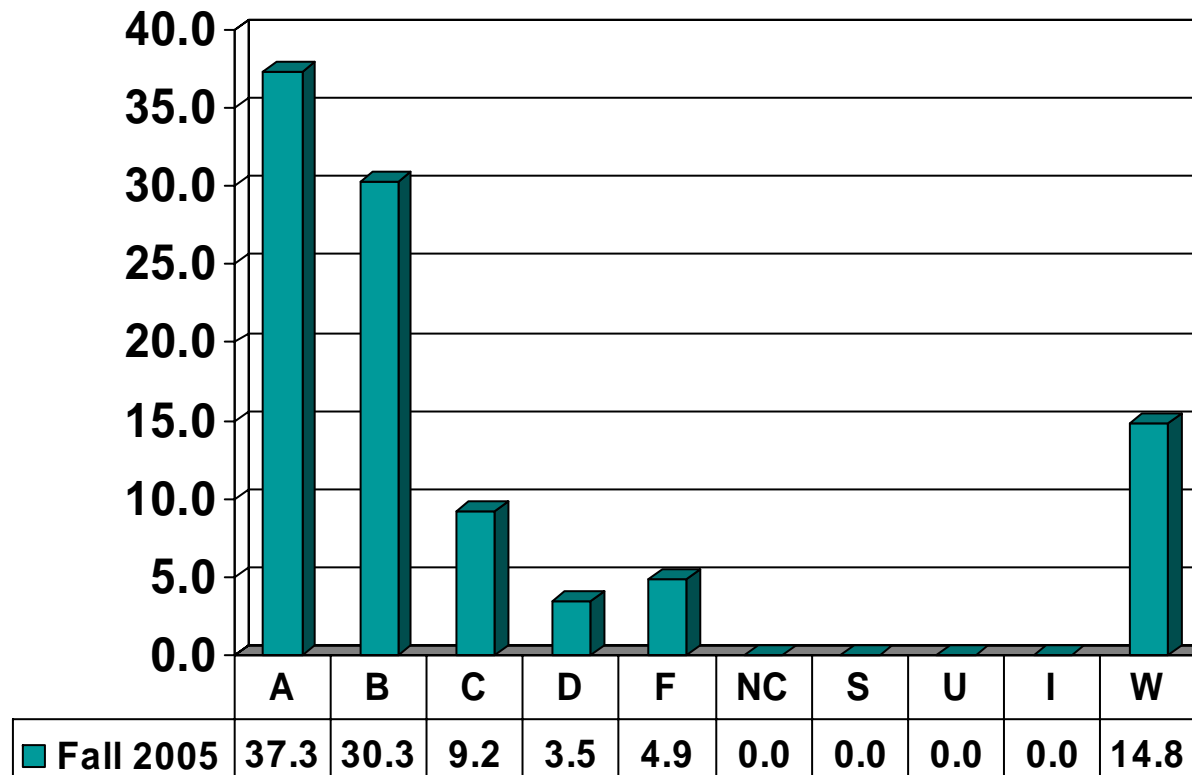
Graduates – No. of Grades = 28



Note: Percent columns show rounded figures and may not total 100%.

MANAGEMENT & MARKETING

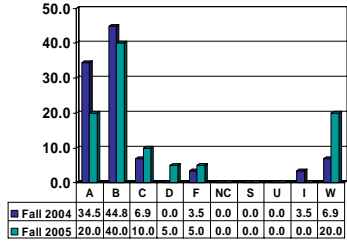
Graduate Courses – No. of Grades = 142



Note: Percent columns show rounded figures and may not total 100%.

ECONOMICS 5003

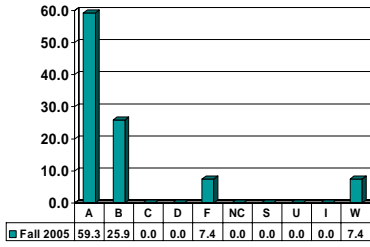
Graduates – No. of Grades = 20



Note: Percent columns show rounded figures and may not total 100%.

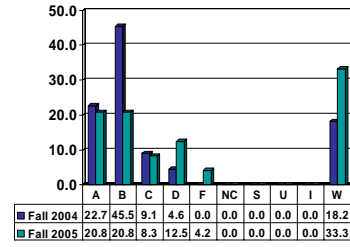
MANAGEMENT 5103

Graduates – No. of Grades = 27



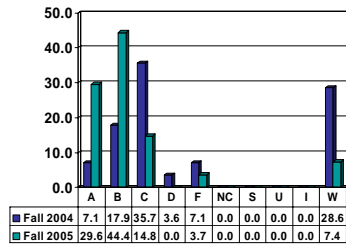
MANAGEMENT 5113

Graduates – No. of Grades = 24



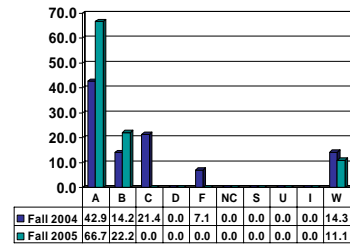
MANAGEMENT 5123

Graduates – No. of Grades = 27



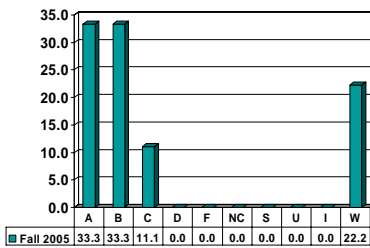
MANAGEMENT 5323

Graduates – No. of Grades = 9



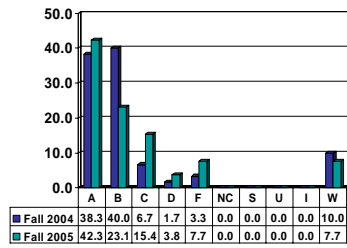
MANAGEMENT 5613

Graduates – No. of Grades = 9



MARKETING 5303

Graduates – No. of Grades = 26



Note: Percent columns show rounded figures and may not total 100%.