

---

# PRAIRIE VIEW A&M UNIVERSITY 2006-2010 FACT BOOK



A MEMBER OF THE TEXAS A&M  
UNIVERSITY SYSTEM

---

## TABLE OF CONTENTS

<b>HISTORICAL STATEMENT</b> .....	i	
<b>BRIEF CHRONOLOGY</b> .....	ii	
<b>RECENT EVENTS</b> .....	iv	
<b>PURPOSE/MISSION STATEMENT</b> .....	v	
<b>GOALS &amp; OBJECTIVES</b> .....	vi	
<b>TEXAS A&amp;M UNIVERSITY</b>		
BOARD OF REGENTS .....	ix	
SYSTEM OFFICES LEADERSHIP .....	ix	
<b>PRAIRIE VIEW A&amp;M UNIVERSITY</b>		
EXECUTIVE OFFICERS.....	x	
ACADEMIC ADMINISTRATION .....	x	
OFFICE OF THE PRESIDENT .....	xi	
BUSINESS AFFAIRS.....	xi	
ACADEMIC AFFAIRS.....	xi	
ADMINISTRATION AND AUXILIARY SERVICES .....	xii	
RESEARCH AND DEVELOPMENT .....	xii	
STUDENT AFFAIRS AND INSTITUTIONAL RELATIONS .....	xiii	
COOPERATIVE EXTENSION/RESEARCH .....	xiii	
<b>HIGHLIGHTS</b> .....	xiv	
 <b>ENROLLMENT DATA</b>		
<b>Table/Chart Enr-1</b>	Total Headcount Enrollment, 20 <sup>th</sup> Day Comparisons Fall 2006 - Fall 2010.....	1
<b>Table/Chart Enr-2</b>	Total Student Enrollment by Gender Fall 2006 - Fall 2010.....	2
<b>Table/Chart Enr-3</b>	Total Student Enrollment by Ethnicity Fall 2006 - Fall 2010.....	3
<b>Table/Chart Enr-4</b>	Undergraduate Student Enrollment by Ethnicity Fall 2006 - Fall 2010.....	4
<b>Table/Chart Enr-5</b>	Masters Student Enrollment by Ethnicity Fall 2006 - Fall 2010.....	5

<b>Table/Chart Enr-6</b>	Doctoral Student Enrollment by Ethnicity Fall 2006 - Fall 2010.....	6
<b>Table/Chart Enr-7</b>	Total Student Enrollment by Age Distribution Fall 2006 - Fall 2010.....	7
<b>Table/Chart Enr-8</b>	Average Student Age by Level Fall 2006 - Fall 2010.....	8
<b>Table/Chart Enr-9</b>	Total Student Enrollment by Geographical Source Fall 2006 - Fall 2010.....	9
<b>Table/Chart Enr-10</b>	First-Time Entering Students by Source Fall 2006 - Fall 2010.....	10
<b>Table/Chart Enr-11</b>	Total Student Enrollment by Semester Credit Hour Load Fall 2006 - Fall 2010.....	11
<b>Table/Chart Enr-12</b>	Student FTE by Level Fall 2006 - Fall 2010.....	12
<b>Table/Chart Enr-13</b>	Total Student Enrollment by Tuition Status Fall 2006 - Fall 2010.....	13
<b>Table/Chart Enr-14</b>	Full-Time and Part-Time Student Enrollment by Level, Fall 2006 - Fall 2010.....	14
<b>Table Enr-15</b>	Top 10 Feeder High Schools/Top 11 College Feeder Institutions...	15
<b>Table Enr-16</b>	Foreign Headcount by Country of Origin .....	16
<b>SEMESTER CREDIT HOURS</b>		
<b>Table/Chart Sch-1</b>	Total Semester Credit Hours Generated by Level Fall 2006 - Fall 2010.....	17
<b>Table/Chart Sch-2</b>	Total Semester Credit Hours Generated On-Campus and Off-Campus Fall 2006 - Fall 2010.....	18
<b>Table/Chart Sch-3</b>	Total Semester Credit Hours Generated by Rank of Faculty Fall 2006 - Fall 2010.....	19
<b>Table Sch-4</b>	Undergraduate Semester Credit Hours (by Colleges/Departments) Fall 2006 - Fall 2010.....	20
<b>Table Sch-5</b>	Masters Semester Credit Hours (by Colleges/Departments) Fall 2006 - Fall 2010.....	21

<b>Table Sch-6</b>	Doctoral Semester Credit Hours (by Colleges/Departments) Fall 2006 - Fall 2010.....	22
<b>Table Sch-7</b>	Total Semester Credit Hours (by Colleges/Departments) Fall 2006 - Fall 2010.....	23

**DEGREE PROGRAMS AND DEGREES AWARDED**

<b>Table Deg-1</b>	Approved Degree Programs Academic Year 2010-2011.....	24
<b>Table/Chart Deg-2</b>	Total Degrees Awarded by Level/Gender Academic Years 2006-2007 through 2009-2010.....	29
<b>Table/Chart Deg-3</b>	Total Degrees Awarded by Ethnicity Academic Years 2006-2007 through 2009-2010.....	30
<b>Table Deg-4</b>	Undergraduate and Graduate Degrees Awarded Academic Years 2006-2007 through 2009-2010.....	31

**FACULTY DATA**

<b>Table Fac-1</b>	Total Faculty Headcount and Full-Time Equivalents Fall 2006 - Fall 2010.....	37
<b>Table Fac-2</b>	Total Faculty Headcount by Rank/Ethnicity/Gender Fall 2006 - Fall 2010.....	38
<b>Table Fac-3</b>	Total Faculty Headcount by Tenure Status/Teaching Percentage Fall 2006 - Fall 2010.....	39
<b>Table/ Fac-4</b>	Tenured Faculty Headcount by Rank/Ethnicity/Gender Fall 2006 - Fall 2010.....	40

**FISCAL DATA**

<b>Chart Fis-1</b>	Current Funds Revenues and Transfers Fiscal Year 2010 .....	41
<b>Chart Fis-2</b>	Current Funds Expenditures and Transfers Fiscal Year 2010 .....	42
<b>Chart Fis-3</b>	Funded Research Expenditures Fiscal Years 2006 through 2010.....	43

**STAFF DATA**

<b>Table/Chart Staff-1</b>	Total Full-Time Staff by Occupational Activity Fall 2006 - Fall 2010.....	44
<b>Table/Chart Staff-2</b>	Total Full-Time Staff by Gender Fall 2006 - Fall 2010.....	45
<b>Table/Chart Staff-3</b>	Total Full-Time Staff by Ethnicity Fall 2006 - Fall 2010.....	46

**LIBRARY DATA**

<b>Table/Chart Lib-1</b>	Total Library Holdings Fiscal Years 2006-2007 through Fall 2009 -Fall 2010 .....	47
<b>Table Lib-2</b>	Library Services Fiscal Years 2006-2007 through 2009-2010 .....	48
<b>Table/Chart Lib-3</b>	Total Library Operating Expenditures Fiscal Years 2006-2007 through 2009-2010 .....	49

**FACILITIES DATA**

<b>Table Hou-1</b>	Major Campus Buildings Fall 2010 .....	50
--------------------	---	----

<b>STAFF DIRECTORY</b> .....		51
------------------------------	--	----

<b>NOTES AND REFERENCES</b> .....		52
-----------------------------------	--	----

## HISTORICAL STATEMENT

Prairie View A&M University, a member of the Texas A&M University System and the second oldest public institution of higher education in Texas, originated in the Texas Constitution of 1876. Having already established the Agricultural and Mechanical College of Texas (later to be named Texas A&M University) in 1871, legislators pledged in the Texas Constitution of 1876 that "separate schools shall be provided for the white and colored children, and impartial provisions shall be made for both." On August 14, 1876, the Texas Legislature authorized the "Agricultural and Mechanical College of Texas, established for colored youths" and placed responsibility for its management with the Board of Directors of the Agricultural and Mechanical College at Bryan. The Alta Vista College for Colored Youths opened at Prairie View, Texas on March 11, 1878; the school was renamed "Prairie View State Normal School" in 1879.

The Texas Legislature authorized the original curriculum in 1879 to be that of a "Normal School" for the "preparation and training of colored teachers." This curriculum was expanded to include the arts and sciences, home economics, agriculture, mechanical arts, and nursing. The Twentieth Legislature in 1887 added in "the Agriculture & Mechanical Department" to the official school name of Prairie View State Normal School. Prairie View was established as a Land Grant College in 1890 (Second Morrill Act). The four-year senior college program began in 1919.

In 1945, the name of the institution was changed from Prairie View Normal and Industrial College to Prairie View University. In 1947, the Texas Legislature changed the name to Prairie View A&M College of Texas and provided that "courses be offered in agriculture, the mechanics arts, engineering, and the natural sciences connected therewith, together with any other courses authorized at Prairie View at the time of passage of this act, all of which shall be equivalent to those offered at the Agricultural and Mechanical College of Texas at Bryan." On August 27, 1973, the name of the institution was changed to Prairie View A&M University, and its status as an independent unit of the Texas A&M University System confirmed.

In 1983, the Texas Legislature proposed a constitutional amendment to restructure the Permanent University Fund (PUF) to include Prairie View A&M University as a beneficiary of its proceeds. The 1983 amendment also dedicated the University to enhancement as an "institution of the first class" under the governing board of the Texas A&M University System. The constitutional amendment was approved by the voters on November 6, 1984. In January 1985, the Board of Regents of the Texas A&M University System responded to the 1984 Constitutional Amendment by stating its intention that Prairie View A&M University becomes "an institution nationally recognized in its areas of education and research." The Board also resolved that the University receive its share of the Available University Fund.

In March 1999, Office of Civil Rights officials indicated that they had reached a preliminary conclusion that disparities traceable to de jure segregation still existed at Prairie View A&M University. As a result, a select committee in mid-2000 agreed that the university should be enhanced. In 2001, the 77<sup>th</sup> Texas Legislature approved funding to support the state commitment to the Office of Civil Rights Priority Plan. This additional funding, the "Texas Commitment," allowed the institution to expand its program offerings and construct new buildings. The first Ph.D. student graduated in December 2004.

## **A Brief Chronology of Prairie View A&M University**

**February 1876:** Texas State Representative William H. Holland submitted an “act to establish an agricultural and manual school for colored youths of the state.”

**August 14, 1876:** The Fifteenth Legislature authorized the creation of the “Agricultural and Mechanical College of Texas,” “established for colored youths.”

**1877:** The state took title to 1,388 acres in Waller County for the site of the college.

**March 11, 1878:** Alta Vista College for Colored Youth opened with eight students.

**1878:** L.W. Minor of Mississippi was named the first Principal (1878-1879).

**April 19, 1879:** The school is renamed “Prairie View State Normal School.” The school is the first coeducational public institution of higher learning in the state.

**1885:** First diplomas granted.

**1887:** The Twentieth Legislature added “the Agriculture & Mechanical Department” to the official school name.

**1890:** The institution became a Land Grant College (Second Morrill Act, 1890).

**1899:** The institution is renamed Prairie View Normal and Industrial College.

**1901:** The institution began offering a four-year course of study.

**1918:** The Prairie View Training School for nurses established.

**1919:** Four-year senior college program began.

**1921:** First four-year degree offered.

**1930:** College of Arts and Sciences established.

**1937:** Division of graduate studies added.

**1939:** First Masters degree granted.

**1945:** Prairie View Normal and Industrial College is renamed Prairie View University.

**1947:** Prairie View University is renamed Prairie View A&M College of Texas.

**1947 - 1948:** Dr. E.B. Evans appointed as Principal and subsequently appointed by the Texas A&M University Board of Directors as Prairie View’s first President.

**1950:** School of Engineering established.

**1958:** The institution accepted for membership in the Southern Association.

**1964:** First white students attended Prairie View.

**1968:** The Navy ROTC program established.

**1972:** College of Business established (degrees offered since early 1930s).

**August 27, 1973:** Prairie View A&M College is renamed Prairie View A&M University and is an independent unit of the Texas A&M University System.

**1982:** Prairie View became a party to the U.S. Dept. of Education's Office of Civil Rights lawsuit.

**1983:** College of Nursing relocated to Texas Medical Center complex in Houston.

**November 6, 1984:** A constitutional amendment restructured the state's Permanent University Fund (PUF) to include Prairie View A&M as a beneficiary of its proceeds.

**1998:** School of Architecture established.

**1999:** College of Juvenile Justice established.

**2000:** University College established.

**2001:** The University's first doctoral program (Ph.D. in Juvenile Justice) offered.

**2001:** Funding approved by 77<sup>th</sup> Texas Legislature to support state commitment to Office of Civil Rights (OCR) Priority Plan.

**July 2002:** "Land-Grant institution by federal statute" added to Mission Statement.

**2003:** Dr. George C. Wright named as the seventh president of Prairie View.

**December 2004:** First Ph.D. awarded (Juvenile Justice).

**2010:** Southern Association of Colleges and Schools reaffirmed the accreditation of PVAMU.

*Note: For additional historical information about the institution, see Prairie View A Study in Public Conscience 1878-1945 by George Ruble Woolfolk (NY: Pageant Press, 1962).*

## **Recent Events Fall 2007 – Fall 2010**

**Fall 2007:** Record enrollment of 8,382 students.

**August 2007:** Memorial Student Center dedicated for PVAMU alumnus Willie Albert Tempton, Sr.

**September 2008:** PVAMU partnered with Lone Star College-CyFair.

**October 2008:** Lafayette High School (Lexington, Ky.) Class of 1968 Scholarship named in honor of President George C. Wright.

**December 2008:** Extend the View capital campaign surpasses goal of \$30 million goal.

**January 2009:** Marching Storm Band leads Tournament of Roses Parade, Pasadena, CA.

**January 2009:** PVAMU students attend President Barack Obama's inauguration in Washington, D.C.

**January 2009:** Campus featured in National HBCU Calendar.

**February 2009:** PVAMU's Society of Women Engineers co-hosted Regional Conference for first time.

**March 2009:** PVAMU alumnus honored with naming of the Don Clark School of Juvenile Justice and Psychology and Texas Crime Prevention Center Building.

**March 2009:** PVAMU Lady Panthers advance to the NCAA Women's Basketball Tournament after winning both the Southwestern Athletic Conference regular season championship and conference tournament.

**April 2009:** PVAMU's College of Engineering named in honor of alumnus Roy G. Perry.

**May 2010:** The Houston Endowment awarded the PVAMU College of Nursing \$3 million. The funds will be used to establish a state-of-the-art simulation lab and a doctorate program.

**May 2010:** The team from PVAMU took top honors in the 2010 Honda All-Star Challenge. Beating out Mississippi Valley State University, PVAMU's team received championship status and appeared in USA Today.

**June 2010:** The Northwest Houston Center began operations at its new Grant Road location, north of Willowbrook Mall. The Center will serve graduate students seeking master's degrees in educational administration, counseling, accounting, nursing administration, education and community development.

**October 2010:** Dr. George C. Wright received the Educational Leadership Award during the Thurgood Marshall Fund's 23<sup>rd</sup> Anniversary Awards Dinner in New York City. Wright was honored for his contributions to the education arena.

## PURPOSE STATEMENT

*The State of Texas, through amendment of the State Education Code (Section 87.104) 2001, provides the following university purpose:*

Section 87.104. PURPOSE OF THE UNIVERSITY. In addition to its designation as a statewide general purpose institution of higher education and its designation as a land-grant institution, Prairie View A&M University is designated as a statewide special purpose institution of higher education for instruction, research, and public service programs dedicated to:

- (1) enabling students of diverse economic, ethnic, and cultural backgrounds to realize their full potential;
- (2) assisting small and medium-sized communities to achieve their optimal growth and development; and
- (3) assisting small and medium-sized agricultural, business, and industrial enterprises to manage their growth and development effectively.

Added by Acts 1981, 67<sup>th</sup> Leg., p. 3040, ch. 795, § 1, eff. June 17, 1981. Amended by Acts 2001, 77<sup>th</sup> Leg., ch. 47, § 1, eff. May 3, 2001.

## MISSION STATEMENT

**Revised-October 2005**

Prairie View A&M University is dedicated to excellence in teaching, research and service. It is committed to achieving relevance in each component of its mission by addressing issues and proposing solutions through programs and services designed to respond to the needs and aspirations of individuals, families, organizations, agencies, schools, and communities--both rural and urban. Prairie View A&M University is a state-assisted institution by legislative designation, serving a diverse ethnic and socioeconomic population and a land-grant institution by federal statute.

Having been designated by the Texas constitution as one of the three "institutions of the first class" (1984), the University is committed to preparing undergraduates in a range of careers including but not limited to engineering, computer science, natural sciences, architecture, business, technology, criminal justice, the humanities, education, agricultural sciences, nursing, mathematics, and the social sciences. It is committed to advanced education through the master's degree in education, engineering, natural sciences, nursing, selected social sciences, agriculture, business, and human sciences. It is committed to expanding its advanced educational offerings to include multiple doctoral programs.

Though the University's service area has generally extended throughout Texas and the world, the University's target service area for offering undergraduate and graduate programs of study includes the Texas Gulf Coast Region; the rapidly growing residential and commercial area known as the Northwest Houston Corridor; and urban Texas centers likely to benefit from Prairie View A&M University's specialized programs and initiatives in nursing, juvenile justice, architecture, education, and social work.

The University's public service programs offered primarily through the Cooperative Extension Program target the State of Texas, both rural and urban counties. The University's research foci include extending knowledge in all disciplines offered and incorporating research-based experiences in both undergraduate and graduate students' academic development.

**Prairie View A&M University**  
**Goals and Objectives for the Next Five Years**  
**2009-2013**

1. Strengthen the Quality of Academic Programs
  - ◆ Conduct external academic program reviews
  - ◆ Achieve specialized accreditation of selected academic programs
  - ◆ Succeed in achievement of Licensures in applicable academic program areas
  - ◆ Eliminate non-productive academic programs
  - ◆ Increase the prominence of faculty scholarship
  - ◆ Increase the number of faculty FTE's producing research/scholarly and creative works
  - ◆ Retain regional accreditation
  - ◆ Retain accreditation held in specialized programs
  
2. Improve the Academic Indicators of the Student Body
  - ◆ Conduct annual reviews of admission standards/requirements
  - ◆ Increase/improve the standardized test scores of matriculates
  - ◆ Collaborate with Texas' other educational programs to increase the number and success of transfer students
  - ◆ Admit and enroll an increasingly higher caliber of student
  - ◆ Increase the number of students who adhere to the University's Conduct Standards
  
3. Increase Applied and Basic Research
  - ◆ Enhance the research environment and expertise of faculty and staff
  - ◆ Align university research goals with federal, state, and industry needs and goals
  - ◆ Enhance pre- and post-award services to the university research and sponsored program community
  
4. Strengthen Environmental Health and Safety Programs on the Campus
  - ◆ Implement off-site storage of critical data
  - ◆ Prepare and train for business continuity
  
5. Achieve (and maintain) Financial Stability
  - ◆ Expand the financial capacity of PVAMU
  - ◆ Address potentially critical funding issues involved with the eventual loss of special OCR Priority Plan funding
  - ◆ Meet or exceed expectations associated with the current Capital Campaign
  - ◆ Take appropriate steps to "right-size" the annual operating budget of PVAMU
  - ◆ Increase the availability of scholarship funds
  - ◆ Increase the size and number of endowments for student scholarships and for academic chairs
  - ◆ Increase funded research
  - ◆ Stay competitive in tuition and fees/align tuition and fees to be competitive with other general academic institutions in Texas

6. Increase the Efficiency of University Operations
  - ◆ Design and implement a document imaging program
  - ◆ Identify additional outsourcing opportunities
  - ◆ Improve the quality of support staff
  - ◆ Transfer fiscal processes to online applications
  - ◆ Maximize space usage
  
7. Promote Programs that Contribute to Student Success
  - ◆ Engage students in rigorous educational programs and provide an environment conducive to success
  - ◆ Increase/improve the percentage of PVAMU graduates who are accepted to graduate and/or professional schools
  - ◆ Increase placement rates of all PVAMU graduates
  
8. Strengthen University Advancement Programs including Fund-Raising
  - ◆ Communicate the accomplishments of the University through publications to the various constituent groups
  - ◆ Enhance corporate relations through Industry Cluster publications that show the strength of corporate partnerships with the University
  - ◆ Use technology to communicate the University's accomplishments to a broader audience
  - ◆ Continue to implement the fund-raising model and university advancement model developed from the planning study and refined by Ketchum's progress reviews of Extend the View: The Capital Campaign for Prairie View A&M University
  
9. Increase and Enhance the Visibility and Awareness of the University to the Community at Large/all Stakeholders
  - ◆ Effectively communicate to all Stakeholders the PVAMU Vision/2020
  - ◆ Expand its service to the community by promoting Service Learning, Distance Education, Continuing Education, IK-16 programs, Small Business and Entrepreneurial Initiatives, Cooperative Extension, and Health Care by engaging its people and resources in a renewed commitment to outreach
  - ◆ Improve the climate for diversity
  
10. Strengthen the Quality of the Athletics Program (Added as of Fall 2007)
  - ◆ Increase revenues
  - ◆ Request fee increase to offset increased operational costs
  - ◆ Increase on-line services
  - ◆ Increase fan participation/attendance
  - ◆ Increase Development and Fund-raising revenue
  - ◆ Increase HUB spending
  - ◆ Expand student athlete exposure to service learning
  - ◆ Create energy conservation and increase public service involvement

- ◆ Strengthen academic advisement and tutor/mentor program
- ◆ Increase available scholarships for student athletes
- ◆ Improve quality of athletic facilities and playing environment

# Texas A&M University

Board of Regents, As of February 12, 2010

---



Morris E. Foster,  
Chairman  
Belton  
*Term Exp. 2/1/2013*



James P. Wilson,  
Vice Chairman  
Sugarland  
*Term Exp. 2/1/2015*



Lupe Fraga  
Board Member  
Sugarland  
*Term Exp. 2/1/2011*



Gene Stallings  
Board Member  
Powderly  
*Term Exp. 2/1/2011*



Ida Clement Steen  
Board Member  
San Antonio  
*Term Exp. 2/1/2011*



Richard A. Box  
Board Member  
Austin  
*Term Exp. 2/1/2013*



Phil Adams,  
Board Member  
Bryan/College Station  
*Term Exp. 2/1/2015*



John D. White,  
Board Member  
Houston  
*Term Exp. 2/1/2015*



Jim Schwertner  
Board Member  
Austin  
*Term Exp. 2/1/2015*

## THE TEXAS A&M UNIVERSITY SYSTEM

### Board of Regents

<b>Morris E. Foster</b> , Belton ( <i>Chairman</i> ).....	Term expires February 1, 2013
<b>James P. Wilson</b> , Sugarland ( <i>Vice Chairman</i> ).....	Term expires February 1, 2013
<b>Lupe Fraga</b> , Sugarland .....	Term expires February 1, 2011
<b>Gene Stallings</b> , Powderly .....	Term expires February 1, 2011
<b>Ida Clement Steen</b> , San Antonio .....	Term expires February 1, 2011
<b>Richard A. Box</b> , Austin .....	Term expires February 1, 2013
<b>Phil Adams</b> , Bryan/College Station .....	Term expires February 1, 2015
<b>John D. White</b> , Houston .....	Term expires February 1, 2015
<b>Jim Schwertner</b> , Austin.....	Term expires February 1, 2015

As of February 12, 2010

### System Offices Leadership

<b>Chancellor</b> .....	Michael D. McKinney
<b>Chief Investment Officer and Treasurer</b> .....	Gregory R. Anderson
<b>Vice Chancellor for Academic Affairs</b> .....	Frank B. Ashley, III
<b>Vice Chancellor for Governmental Relations</b> .....	Stanton C. Calvert
<b>Chief Information Officer</b> .....	Pierce Cantrell
<b>Chief Business Officer</b> .....	B. J. Crain
<b>Chief Communication Officer</b> .....	Jason Cook
<b>Chief Facilities Planning &amp; Construction Officer</b> .....	Vergel Gay
<b>General Counsel</b> .....	Andrew Stron
<b>Vice Chancellor for Research</b> .....	Brett P. Giroir
<b>Chief of Staff</b> .....	Janet Smalley
<b>Chief Auditor</b> .....	Catherine A. Smock
<b>Chief Safety Officer</b> .....	Chris Meyer
<b>Chief Research Officer</b> .....	Jeffrey R. Seeman

As of February 12, 2010

For additional information on the Texas A&M University System, refer to: <http://sago.tamu.edu>

**PRAIRIE VIEW A&M UNIVERSITY**

*Executive Officers*

**George C. Wright** ..... President  
**E. Joahanne Thomas-Smith** ..... Provost and Sr. Vice President, Academic Affairs  
**Mary Lee Hodge** .....Sr. Vice President, Business Affairs  
**Willie F. Trotty** ..... Vice President, Research and Development  
**Lauretta Byars** ..... Vice President, Student Affairs and Institutional Advancement  
**Fred Washington** ..... Vice President, Administration and Auxiliary Services

*Academic Administration*

**Freddie Richards** ..... Dean, College of Agriculture and Human Sciences  
**Danny Kelley** ..... Dean, College of Arts and Sciences  
**Munir Quddus** ..... Dean, College of Business  
**Lucian Yates III** ..... Dean, College of Education  
**Kendall T. Harris** ..... Dean, College of Engineering  
**Betty Adams** ..... Dean, College of Nursing  
**Ikhlas Sabouni** ..... Dean, School of Architecture  
**Dennis E. Daniels (Interim)** ..... Dean, School of Juvenile Justice and Psychology  
**Willie Trotty** ..... Dean, Graduate School  
**Lettie A. Raab** ..... Executive Director, University College  
**Gwendolyn Toney** ..... Director, University Scholars Program  
**Dennis E. Daniels**..... Director, Undergraduate Medical Academy

**ADMINISTRATIVE STAFF**

*Office of the President*

Mary Smith.....Executive Assistant  
 Carol B. Campbell..... Director, Special Events  
 Fred Washington ..... Director, Athletics

*Business Affairs*

Mary Lee Hodge ..... Sr. Vice President, Business Affairs and Chief Financial Officer  
 Rod Mireles ..... Associate Vice President, Financial Accounting, Reporting & Procurement  
 Marilyn Maynard ..... Assistant Vice President, Financial Services  
 Albert R. Gee ..... Assistant Vice President, Human Resources  
 Radhika Ayyar ..... Director, Employee Services  
 Dean Williamson ..... Director, Institutional Research & Effectiveness  
 Kay Peavy ..... Director, Procurement, Contracts and Preconciliation  
 Jay S. Abbt ..... Director, Environmental Health & Safety  
 Larry Raab .....Space Management  
 Richard Norton ..... Assistant Vice President, Physical Plant  
 Luis-Pablo Grijalva..... Chief Information Officer, Information Technology  
 Louis Morgan..... Information Security Officer  
 Lydia Cavanaugh ..... Compliance  
 Midhat Ashgar.....Business Affairs Information Resources  
 Jim Nelms .....Coordinator, Historically Underutilized Business

*Academic Affairs*

E. Joahanne Thomas-Smith ..... Provost and Sr. Vice President, Academic Affairs  
 Michael McFrazier ..... Vice Provost, Academic Affairs and Dean of Northwest Houston Center

**Don Byars** ..... Associate Provost, Enrollment Management  
**K. Michael Francois** ..... Director, Student Financial Services  
**Mark Pearson** ..... Executive Director, Enrollment Management Services  
**Rosie Albritton** ..... Director, John B. Coleman Library  
**John Williams** ..... Director, Distance Learning  
**Mary Gooch** ..... Director, Undergraduate Admissions  
**Laurette Foster** ..... Coordinator, Center for Teaching Excellence

*Administration and Auxiliary Services*

**Fred Washington** ..... Vice President, Administration & Auxiliary Services  
**Tressey Wilson** ..... Assistant Vice President, Auxiliary Services  
**Anitra Phelps-Addison** ..... Director, Auxiliary Support Services  
**Algray Pettus**..... Chief of Police  
**Thelma J. Pierre** ..... Administrator, Dept. of Health and Counseling Services  
**Cheryl Granger-Brooks**..... Manager, KPVO

*Research and Development*

**Willie F. Trotty**..... Vice President, Research and Development  
**Elizabeth Noel** ..... Associate Vice President, Research  
**Lora Williams**..... Director, Title III  
**Hortense Kilpatrick** ..... Director, Alumni Affairs  
**Nelson Bowman** ..... Director, Development  
**Robert T. Effinger** ..... Administrator, Research Foundation  
**Ann Craddock**..... Manager, Office of Sponsored Programs  
**Richard T. Wilkins**..... Director, Center for Applied Radiation Research

**Kelvin K. Kirby** .....Deputy Director, Center for Applied Radiation Research

*Student Affairs and Institutional Relations*

**Lauretta Byars** ..... Vice President, Student Affairs and Institutional Advancement

**Miron P. Billingsley** ..... Associate Vice President, Student Affairs

**Sheleah D. Hughes** ..... Director, Public Relations

**Elma De-Luna Gonzalez**..... Director, Multicultural Affairs

**Glenda Jones**..... Director, Career and Outreach Services

**Kay Norman**.....Director, Student Services

**Frank D. Jackson** ..... Governmental Affairs Officer

**Charles H. Lewter IV**..... Dean, All Faiths Chapel

**Renee Williams**..... Equal Opportunity Officer

*Cooperative Extension/Research*

**Nelson Daniels** .....Associate Administrator, Cooperative Extension Program

**Alfred I. Parks**.....Research Director, Cooperative Agriculture Research

For additional information on Prairie View A&M University, refer to: <http://www.pvamu.edu>

All positions effective May 15, 2010

## HIGHLIGHTS

### Enrollment

- ◆ Blacks constitute 88% of the undergraduate enrollment but only 8% of the Masters level enrollment (p. 3 and 5). Females make up 61% of the total enrollment (p. 2).
- ◆ Of the 8,203 students in fall 2008, 93% are classified as in-state students.
- ◆ Females constitute 59% of undergraduate degrees awarded and 71% of graduate degrees awarded. Females received 67% of all degrees awarded (p. 29).

### Semester Credit Hours

- ◆ Undergraduate semester credit hour to graduate semester credit hours (9:1) has steadily narrowed over the past five fall semesters (p. 17).
- ◆ Semester credit hours earned at off-campus locations increased slightly after a decrease in Fall 2008 (p. 18).

### Student Accomplishments

- ◆ The Schenectady County Community College Board of Trustees passed a resolution appointing PVAMU Alumnus Dr. Quintin B. Bullock as President of SCCC at their meeting on Monday, December 15, 2008. Dr. Bullock was chosen to serve as the sixth President of SCCC.
- ◆ Prairie View A&M student Christopher Jackson was selected to perform in the 105 *Voices of History* (105 VOH) inaugural concert held at the John F. Kennedy Center for the Performing Arts in Washington, D.C., September 7<sup>th</sup>. The singers in this special chorus were selected by their respective choir directors and each performer represented the top members from each of the 105 Historically Black Colleges and Universities (HBCU) invited to participate.
- ◆ Two PVAMU students, Clarissa Durand-Rougely and Melisa Stewart, won awards for their poster presentations at the Annual Biomedical Research Conference for Minority Students was held November 5-9, 2008 in Orlando, Florida. ABRCMS is the largest biomedical research conference for minority students in the nation. The conference attracted more than 3,000 students, faculty and exhibitors.
- ◆ The football team's victory against Alabama State in December 12, 2009 assured the program of consecutive non-losing seasons, a feat that hasn't been seen at Prairie View since the 1967 squad finished the last of 22 straight campaigns of at least .500 ball.
- ◆ The quiz bowl team captures first championship April 12, 2010 in the 2010 Honda Campus All-Star Challenge. The undefeated team claimed victory after defeating Mississippi Valley State University (265-195) in the final completion.
- ◆ The men's tennis crowned 2010 SWAC champions in the 2010 SWAC Tennis Championships by defeating Alcorn State 4-3 on April 18, 2010 to capture the program's 19<sup>th</sup> SWAC Championship.
- ◆ The Houston Endowment awarded the PVAMU College of Nursing \$3 million. The funds will be used to establish a state-of-the-art simulation lab and a doctorate program.

- ♦ The team from PVAMU took top honors in the 2010 Honda All-Star Challenge. Beating out Mississippi Valley State University, PVAMU's team received championship status and appeared in USA Today.
- ♦ The National Science Foundation awarded PVAMU has been awarded a \$5 million grant to support the Center for Energy and Environmental Sustainability. The Center focuses on energy research in biofuels, wind energy and energy and the environment.
- ♦ The Northwest Houston Center began operations at its new Grant Road location, north of Willowbrook Mall. The Center will serve graduate students seeking master's degrees in educational administration, counseling, accounting, nursing administration, education and community development.
- ♦ Defensive Coordinator Heishma Northern became the 31<sup>st</sup> head coach in University history after the departure of Henry Frazier III. Northern is a 14-year veteran on the collegiate level.

### Faculty

- ♦ Total faculty headcount has increased from 485(2005) to 503 (2009) (p. 37).
- ♦ Blacks constitute 61% of the Prairie View faculty followed by whites at 19% and Asians/Pacific Islanders at 12% (p. 38).
- ♦ 75% of the tenured faculty members are male and 25% are female (p. 40).

### Staff

- ♦ Professional non-faculty employees account for 40% of all non-faculty positions and secretarial/clerical employees make up 7% of the total (p. 44).
- ♦ 41% of all non-faculty employees are male and 59% are female (p. 45).
- ♦ 80% of all non-faculty employees are black, 10% are white, and 5% are Hispanic (p. 46).

### Fiscal Data

- ♦ The University's FY2009 revenues and transfers reached \$129,554,474, with 46% (\$68,090,097) coming from state appropriations (p. 41).
- ♦ Total Funded Research Expenditures declined to \$8,525,554 (FY2009) (p. 42).

### Library

- ♦ Total Library holdings of all types reached 1,181,753 in 2008-2009 (p. 47).

**PRAIRIE VIEW A&M UNIVERSITY  
HEADCOUNT ENROLLMENTS**

**20<sup>th</sup> Day Comparisons**

*Fall 2006, Fall 2007, Fall 2008, Fall 2009, 2010*

Table/Chart Enr-1

	20 <sup>th</sup> Day Certified FALL 2006		20 <sup>th</sup> Day Certified FALL 2007		20 <sup>th</sup> Day Certified FALL 2008		20 <sup>th</sup> Day Certified FALL 2009		20 <sup>th</sup> Day Certified FALL 2010	
	N	%	N	%	N	%	N	%	N	%
<b>Undergraduate:</b>										
Freshman	<b>1,894</b>	23.66%	<b>2,057</b>	24.54%	<b>2,121</b>	25.30%	<b>2,511</b>	30.61%	<b>2,640</b>	30.67%
<i>First-time Freshmen</i>	1,231		1,322		1,294					
Sophomore	<b>1,168</b>	14.59%	<b>1,162</b>	13.86%	<b>1,368</b>	16.32%	<b>1,268</b>	15.46%	<b>1,336</b>	15.52%
Junior	<b>1,142</b>	14.26%	<b>1,127</b>	13.45%	<b>1,064</b>	12.69%	<b>1,202</b>	14.65%	<b>1,223</b>	14.21%
Senior	<b>1,462</b>	18.26%	<b>1,592</b>	18.99%	<b>1,625</b>	19.39%	<b>1,636</b>	19.94%	<b>1,732</b>	20.12%
Undergraduate Subtotal:	5,666		6,118		6,178		6,617			
<b>Post-Bacc</b>	<b>147</b>	1.84%	<b>180</b>	2.15%	<b>100</b>	1.19%	<b>108</b>	1.32%	<b>42</b>	0.49%
<b>Grad-Masters</b>	<b>2,081</b>	25.99%	<b>2,157</b>	25.73%	<b>1,833</b>	21.87%	<b>1,777</b>	21.66%	<b>1,680</b>	19.52%
<b>Grad-Doctorate</b>	<b>112</b>	1.40%	<b>107</b>	1.28%	<b>92</b>	1.10%	<b>106</b>	1.29%	<b>128</b>	0.00%
<b>Gender*</b>										
Male	<b>3,094</b>	38.65%	<b>3,195</b>	38.12%	<b>3,181</b>	37.95%	<b>3,355</b>	40.90%	<b>3,434</b>	39.89%
Female	<b>4,912</b>	61.35%	<b>5,187</b>	61.88%	<b>5,022</b>	59.91%	<b>5,253</b>	64.04%	<b>4,347</b>	50.50%
<b>Ethnicity</b>										
White	<b>333</b>	4.16%	<b>304</b>	3.63%	<b>328</b>	3.91%	<b>391</b>	4.77%	<b>293</b>	3.40%
Black	<b>7,121</b>	88.95%	<b>7,442</b>	88.79%	<b>7,136</b>	85.13%	<b>7,436</b>	90.65%	<b>7,580</b>	88.06%
Hispanic	<b>257</b>	3.21%	<b>318</b>	3.79%	<b>331</b>	3.95%	<b>366</b>	4.46%	<b>391</b>	4.54%
Asian	<b>104</b>	1.30%	<b>134</b>	1.60%	<b>151</b>	1.80%	<b>162</b>	1.97%	<b>220</b>	2.56%
Amer Indian/Alaskan	<b>14</b>	0.17%	<b>12</b>	0.14%	<b>13</b>	0.16%	<b>10</b>	0.12%	<b>14</b>	0.16%
International <sup>1</sup>	<b>149</b>	1.86%	<b>147</b>	1.75%	<b>143</b>	1.71%	<b>161</b>	1.96%	<b>181</b>	2.10%
Unknown	<b>28</b>	0.35%	<b>7</b>	0.08%	<b>101</b>	1.20%	<b>82</b>	1.00%	<b>102</b>	1.18%
<b>Residence</b>										
In-State	<b>7,425</b>	92.74%	<b>7,767</b>	92.66%	<b>7,607</b>	92.73%	<b>7,927</b>	96.64%	<b>8,000</b>	92.94%
Out-of-State	<b>426</b>	5.32%	<b>448</b>	5.34%	<b>449</b>	5.47%	<b>499</b>	6.08%	<b>600</b>	6.97%
International <sup>2</sup>	<b>155</b>	1.94%	<b>167</b>	1.99%	<b>147</b>	1.79%	<b>182</b>	2.22%	<b>181</b>	2.10%
<b>TOTAL</b>	<b>8,006</b>		<b>8,382</b>		<b>8,203</b>		<b>8,608</b>		<b>8,781</b>	
<b>Enrollment % Increase</b>	<i>1.2% inc.</i>		<i>4.7% inc.</i>		<i>-2.1% dec.</i>		<i>5.0% inc.</i>		<i>2.0 inc.</i>	
<b>SCH / % Increase</b>	96,364	<i>0.3% inc.</i>	100,785	<i>4.6% inc.</i>	99,619	<i>-1.2% dec.</i>	104,145	<i>4.5% inc.</i>	107,087	<i>2.8% inc.</i>

## Total Student Enrollment by Gender

Fall 2006 - Fall 2010

*Table Enr-2 Total Enrollment*

GENDER	FALL SEMESTERS									
	2006		2007		2008		2009		2010	
	(N)	(%)	(N)	(%)	(N)	(%)	(N)	(%)	(N)	(%)
Male	3,094	39	3,195	38	3,181	39	3,355	39	3,434	39
Female	4,912	61	5,187	62	5,022	61	5,253	61	5,347	61
<b>TOTALS</b>	<b>8,006</b>		<b>8,382</b>		<b>8,203</b>		<b>8,608</b>		<b>8,781</b>	

### *Undergraduate*

GENDER	FALL SEMESTERS									
	2006		2007		2008		2009		2010	
	(N)	(%)	(N)	(%)	(N)	(%)	(N)	(%)	(N)	(%)
Male	2,522	31	2,634	31	2,674	33	2,832	33	2,908	42
Female	3,291	41	3,484	42	3,604	44	3,893	45	4,065	58
<b>TOTALS</b>	<b>5,813</b>		<b>6,118</b>		<b>6,278</b>		<b>6,725</b>		<b>6,973</b>	

### *Masters*

GENDER	FALL SEMESTERS									
	2006		2007		2008		2009		2010	
	(N)	(%)	(N)	(%)	(N)	(%)	(N)	(%)	(N)	(%)
Male	530	7	524	6	479	6	480	6	472	28
Female	1,551	19	1,633	19	1,354	17	1,297	15	1,208	72
<b>TOTALS</b>	<b>2,081</b>		<b>2,157</b>		<b>1,833</b>		<b>1,777</b>		<b>1,680</b>	

### *Doctoral*

GENDER	FALL SEMESTERS									
	2006		2007		2008		2009		2010	
	(N)	(%)	(N)	(%)	(N)	(%)	(N)	(%)	(N)	(%)
Male	42	1	37	0	28	0	43	0	54	42
Female	70	1	70	1	64	1	63	1	74	58
<b>TOTALS</b>	<b>112</b>		<b>107</b>		<b>92</b>		<b>106</b>		<b>128</b>	

Note: Each category (for example, doctoral female) is a percent of the total enrollment.

Source: Texas Higher Education Coordinating Board - PREP Online

## Total Student Enrollment By Ethnicity

Fall 2006 - Fall 2010

*Table/Chart Enr-3*

ETHNICITY	FALL SEMESTERS									
	2006		2007		2008		2009		2010	
	(N)	(%)	(N)	(%)	(N)	(%)	(N)	(%)	(N)	(%)
Black/Non-Hispanic	7,121	89	7,442	89	7,136	87	7,436	86	7,580	86
White/Non-Hispanic	333	4	304	4	328	4	391	5	293	3
Hispanic	257	3	318	4	331	4	366	4	391	4
Asian or Pacific Islander	104	1	134	2	151	1	162	2	220	3
Am. Indian or Alaskan Native	14	*	12	*	13	*	10	*	14	*
International	149	2	147	2	142	2	161	2	181	2
Unknown/Not Reported	28	*	25	*	102	1	82	1	102	1
<b>TOTALS</b>	<b>8,006</b>		<b>8,382</b>		<b>8,203</b>		<b>8,608</b>		<b>8,781</b>	

*\* Denotes less than one percent. Percent columns show rounded figures and may not total 100%.*

# Undergraduate Student Enrollment By Ethnicity

## Fall 2006 - Fall 2010

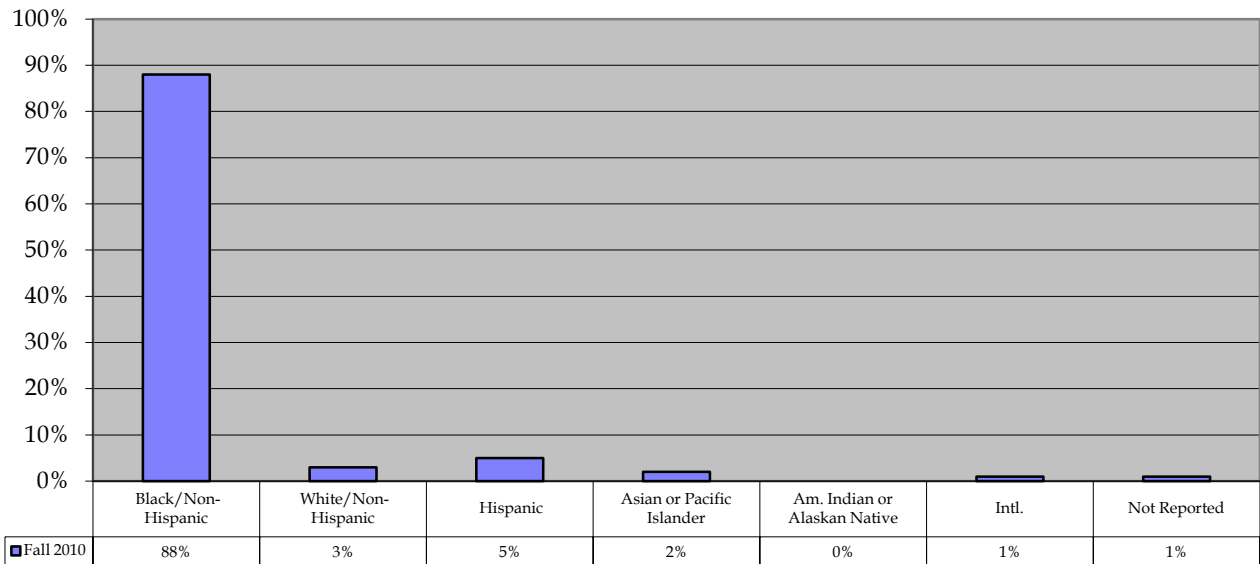
Table/Chart Enr-4

ETHNICITY	FALL SEMESTERS									
	2006		2007		2008		2009		2010	
	(N)	(%)	(N)	(%)	(N)	(%)	(N)	(%)	(N)	(%)
Black/Non-Hispanic	5,248	90	5,490	90	5,544	88	5,848	88	6,147	88
White/Non-Hispanic	165	3	160	3	184	3	208	3	183	3
Hispanic	211	4	253	4	264	4	295	4	331	5
Asian or Pacific Islander	74	1	104	2	125	2	140	2	174	2
Am. Indian or Alaskan Native	12	*	9	*	9	*	6	*	11	*
International	94	2	93	2	83	2	62	1	75	1
Not Reported	9	*	9	*	69	1	58	1	52	1
<b>TOTALS</b>	<b>5,813</b>		<b>6,118</b>		<b>6,278</b>		<b>6,617</b>		<b>6,973</b>	

\* Denotes less than one percent. Percent columns show rounded figures and may not total 100%. Includes Post-Baccalaureates.

Source: Texas Higher Education Coordinating Board - PREP Online

### Fall 2010



## Masters Student Enrollment By Ethnicity

Fall 2006 - Fall 2010

*Table/Chart Enr-5*

ETHNICITY	FALL SEMESTERS									
	2006		2007		2008		2009		2010	
	(N)	(%)	(N)	(%)	(N)	(%)	(N)	(%)	(N)	(%)
Black/Non-Hispanic	1,796	86	1,879	87	1,528	83	1,428	80	1,336	80
White/Non-Hispanic	154	7	128	6	133	7	152	9	102	6
Hispanic	42	2	60	3	66	4	65	4	55	3
Asian or Pacific Islander	27	1	27	1	22	1	20	1	43	3
Am. Indian or Alaskan Native	2	*	3	*	4	*	4	*	3	0
International	42	2	45	2	50	3	87	5	94	6
Not Reported	18	1	15	1	30	2	21	1	47	3
<b>TOTALS</b>	<b>2,081</b>		<b>2,157</b>		<b>1,833</b>		<b>1,777</b>		<b>1,680</b>	

## Doctoral Student Enrollment By Ethnicity

### Fall 2006 - Fall 2010

Table/Chart Enr-6

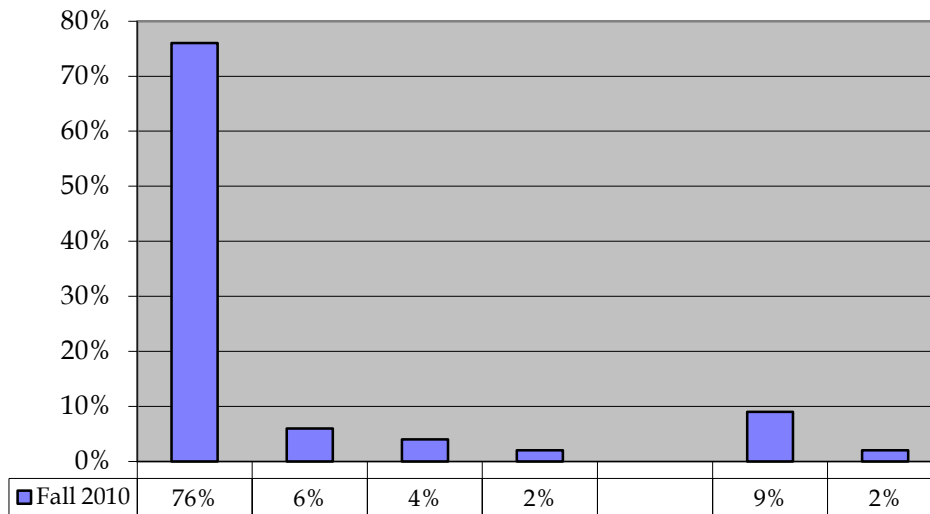
ETHNICITY	FALL SEMESTERS									
	2006		2007		2008		2009		2010	
	(N)	(%)	(N)	(%)	(N)	(%)	(N)	(%)	(N)	(%)
Black/Non-Hispanic	77	69	73	69	64	70	79	75	97	76
White/Non-Hispanic	14	13	16	13	11	12	10	9	8	6
Hispanic	4	4	5	5	1	1	2	2	5	4
Asian or Pacific Islander	3	3	3	3	4	4	2	2	3	2
Am. Indian or Alaskan Native	0	*	0	*	0	0	0	0	0	0
International	13	12	9	12	9	10	11	10	12	9
Not Reported	1	*	1	*	3	3	2	2	3	2
<b>TOTALS</b>	<b>112</b>		<b>107</b>		<b>92</b>		<b>106</b>		<b>128</b>	

\* Denotes less than one percent. Percent columns show rounded figures and may not total 100%.

Note: First Doctorate started in 2001.

Source: Texas Higher Education Coordinating Board - PREP Online

### Fall 2010



## Total Student Enrollment by Age Distribution

### Fall 2006 - Fall 2010

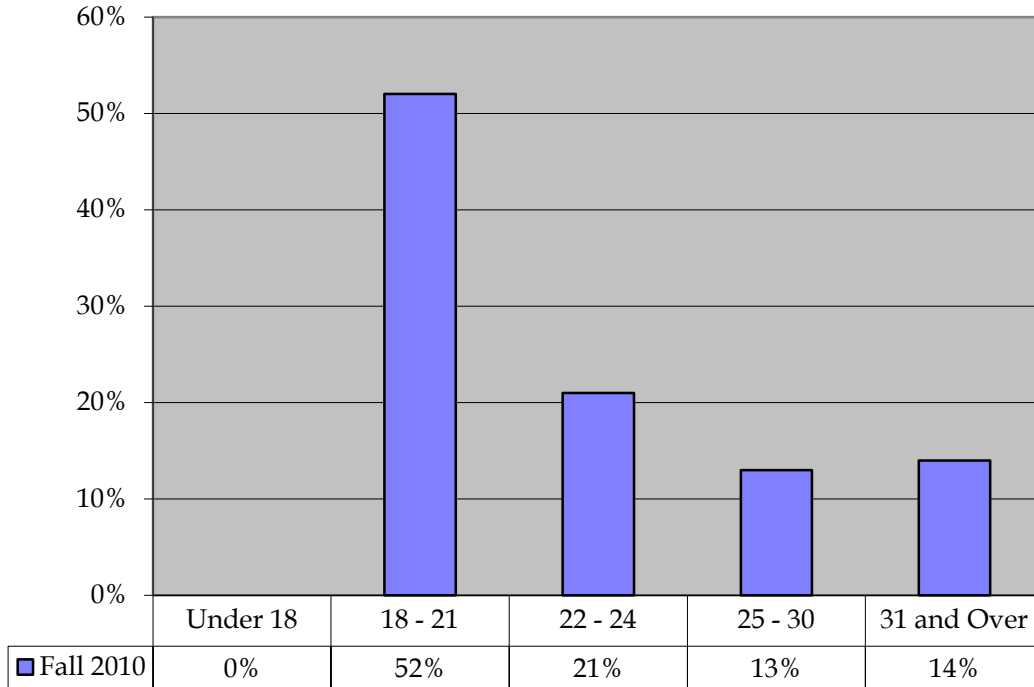
Table/Chart Enr-7

AGE	FALL SEMESTERS									
	2006		2007		2008		2009		2010	
	(N)	(%)	(N)	(%)	(N)	(%)	(N)	(%)	(N)	(%)
Under 18	126	2	30	0	133	2	28	0	21	0
18 - 21	3,979	50	3,898	47	4,152	50	4,307	50	4,595	52
22 - 24	1,347	17	1,662	20	1,572	19	1,792	21	1,808	21
25 - 30	982	12	1,015	12	900	11	1,132	13	1,115	13
31 and Over	1,572	20	1,777	21	1,446	18	1,349	16	1,242	14
<b>TOTALS</b>	<b>8,006</b>		<b>8,382</b>		<b>8,203</b>		<b>8,608</b>		<b>8,781</b>	

\* Denotes less than one percent. Percent columns show rounded figures and may not total 100%.

Source: Texas Higher Education Coordinating Board - PREP Online

### Fall 2010



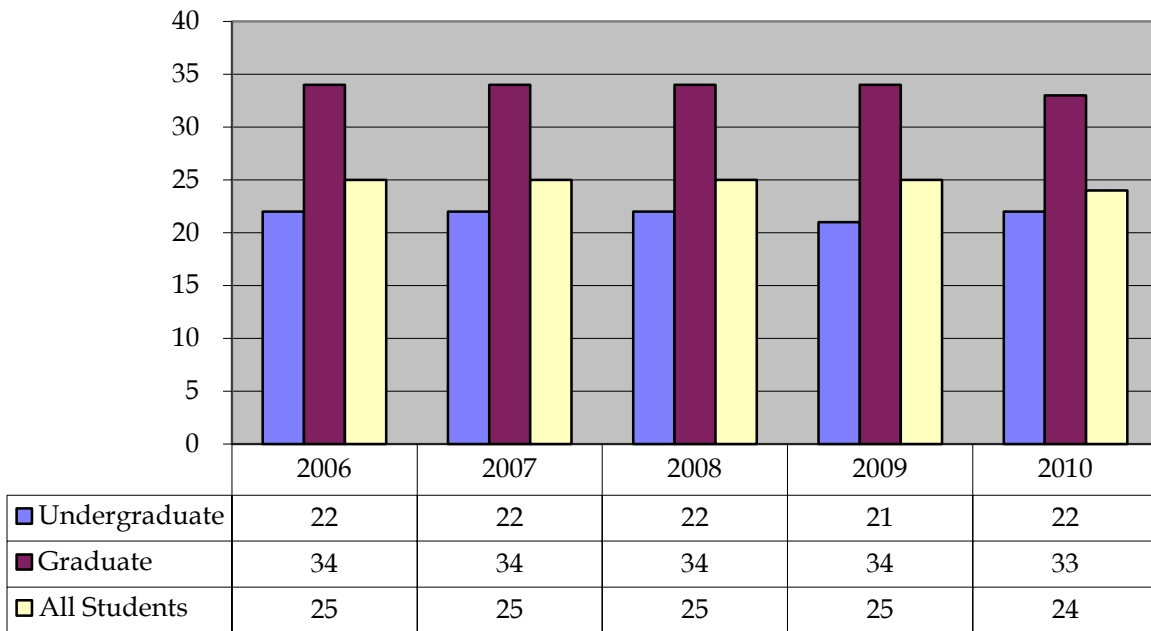
## Average Student Age by Level Fall 2006 - Fall 2010

Table/Chart Enr-8

LEVEL	FALL SEMESTERS				
	2006	2007	2008	2009	2010
Undergraduate	22	22	22	21	22
Graduate	34	34	34	34	33
Average Age - All Students	25	25	25	25	24

Source: Texas Higher Education Coordinating Board - PREP Online

### Fall 2006-2010



# Total Student Enrollment by Geographical Source

## Fall 2005 - Fall 2009

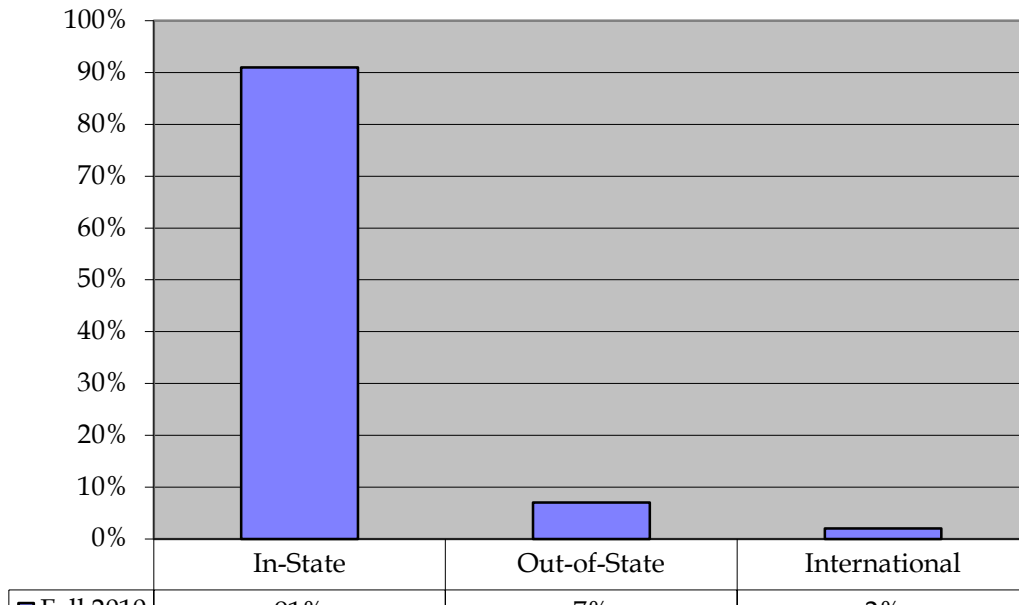
*Table/Chart Enr-9*

GEOGRAPHICAL SOURCE	FALL SEMESTERS									
	2006		2007		2008		2009		2010	
	(N)	(%)	(N)	(%)	(N)	(%)	(N)	(%)	(N)	(%)
In-State	7,425	93	7,768	93	7,607	93	7,927	92	8,000	91
Out-of-State	426	5	447	5	449	5	499	6	600	7
International	155	2	167	2	147	2	182	2	181	2
<b>TOTALS</b>	<b>8,006</b>		<b>8,382</b>		<b>8,203</b>		<b>8,608</b>		<b>8,781</b>	

*\* Denotes less than one percent. Percent columns show rounded figures and may not total 100%.*

*Source: Texas Higher Education Coordinating Board - PREP Online*

### Fall 2010



# First-Time Entering Students by Source

Fall 2006 - Fall 2010

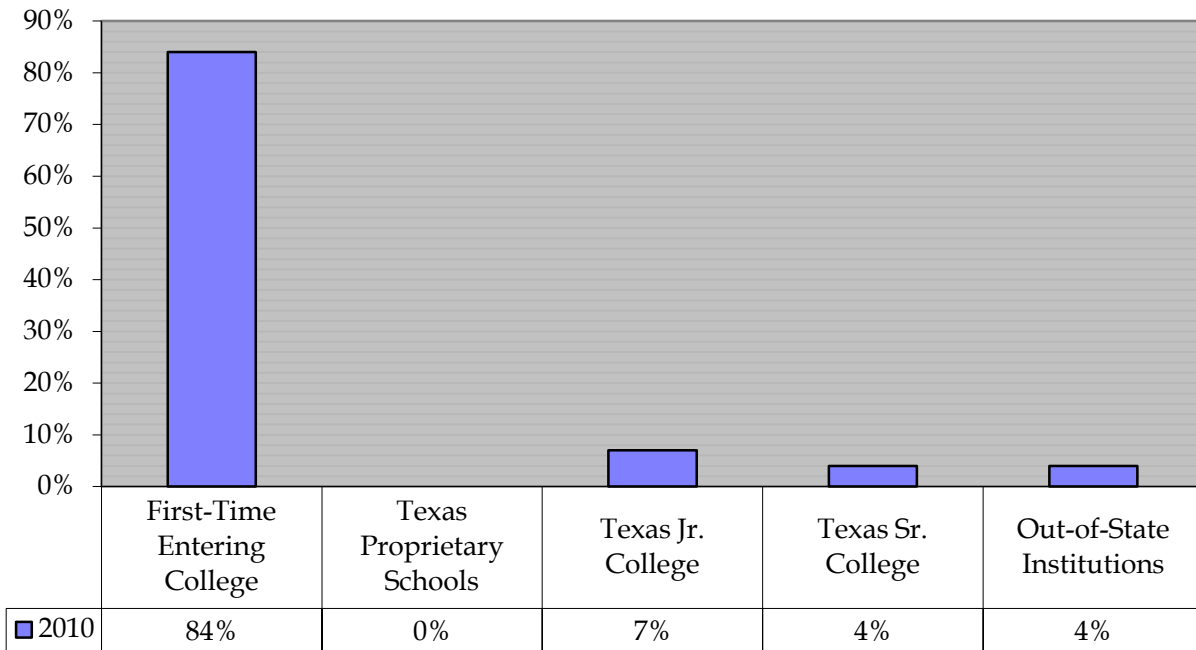
Table/Chart Enr-10

SOURCE	FALL SEMESTERS									
	2006		2007		2008		2009		2010	
	(N)	(%)	(N)	(%)	(N)	(%)	(N)	(%)	(N)	(%)
First-Time Entering College	1,731	85	1,907	86	1,581	84	2,018	86	2,090	84
TX Proprietary Schools	0	*	1	*	0	*	0	*	0	0
Texas Jr. College	192	9	192	9	113	6	132	6	177	7
Texas Sr. College	47	2	48	2	85	5	112	5	106	4
Out-of-State Institutions	74	4	58	3	99	5	91	4	103	4
<b>TOTALS</b>	<b>2,044</b>		<b>2,206</b>		<b>1,878</b>		<b>2,353</b>		<b>2,476</b>	

\* Denotes less than one percent. Percent columns show rounded figures and may not total 100%.

Source: Texas Higher Education Coordinating Board - PREP Online

## Fall 2010



## Total Student Enrollment by Semester Credit Hour Load Fall 2006 - Fall 2010

Table/Chart Enr-11

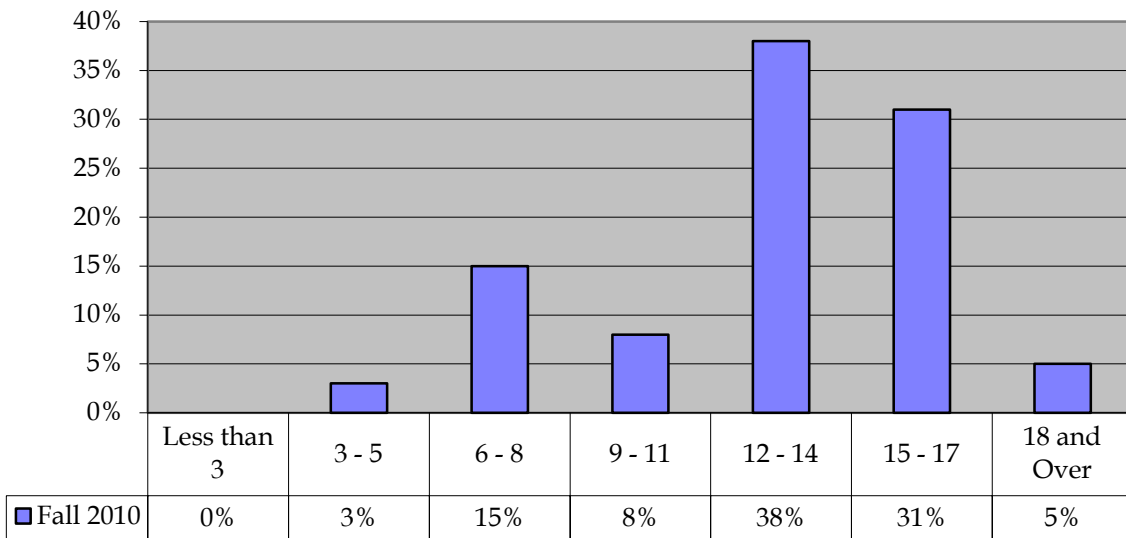
SCH LOAD	FALL SEMESTERS									
	2006		2007		2008		2009		2010	
	(N)	(%)	(N)	(%)	(N)	(%)	(N)	(%)	(N)	(%)
Less than 3	3	*	3	*	7	*	1,168	14	7	0
3 - 5	313	4	325	4	306	4	502	6	247	3
6 - 8	1,532	19	1,664	20	1,435	17	719	8	1,316	15
9 - 11	782	10	803	10	639	8	491	6	715	8
12 - 14	1,999	25	2,047	24	2,437	30	2,569	30	3,312	38
15 - 17	2,869	36	2,981	36	2,852	35	2,740	32	2,762	31
18 and Over	508	6	559	7	527	6	419	5	422	5
<b>TOTALS</b>	<b>8,006</b>		<b>8,382</b>		<b>8,203</b>		<b>8,608</b>		<b>8,781</b>	

\* Denotes less than one percent. Percent columns show rounded figures and may not total 100%.

Note: A semester credit hour is defined as: A unit of measure that represents one student engaged in an activity for which one hour of credit toward a degree or other certificate is granted upon completion. Total semester credit hours for a course are calculated by multiplying the course's credit hour value by the number of students enrolled in the course.

Source: Texas Higher Education Coordinating Board - PREP Online

### Fall 2010



## Student FTE by Level Fall 2006- Fall 2010

Table/Chart Enr-12

LEVEL	FALL SEMESTERS									
	2006		2007		2008		2009		2010	
	(N)	(%)	(N)	(%)	(N)	(%)	(N)	(%)	(N)	(%)
Undergraduate	5,403	81	5,658	81	5,769	84	6,018	85	6,379	86
Masters	1,204	18	1,273	18	1,058	15	1,023	14	947	13
Doctoral	97	1	70	1	43	1	73	1	99	1
<b>TOTALS</b>	<b>6,704</b>		<b>7,001</b>		<b>6,870</b>		<b>7,114</b>		<b>7,425</b>	

Note: Undergraduate FTE formula = total undergraduate student credit hours divided by 15.

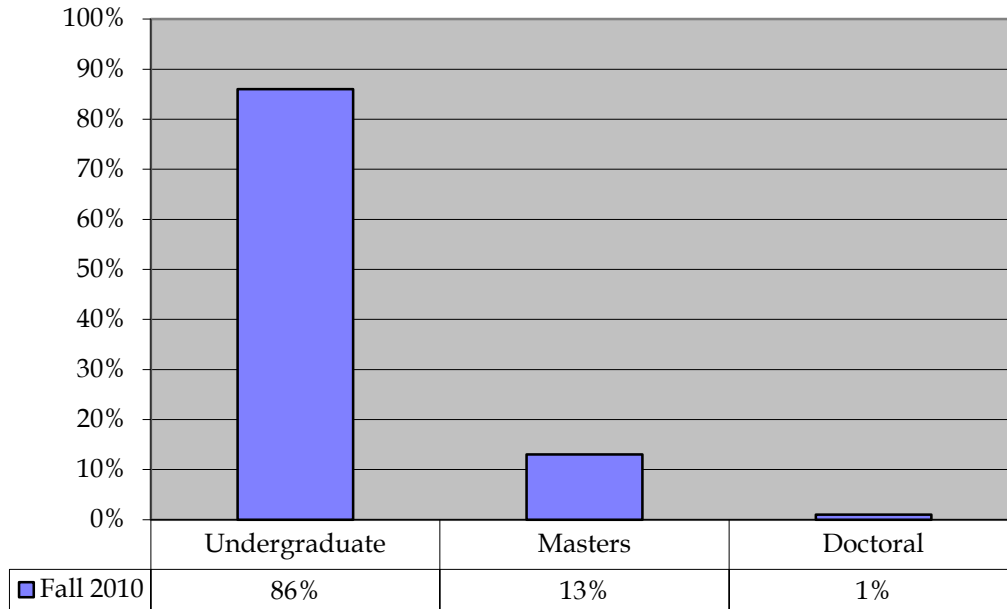
Masters FTE formula = total masters student credit hours divided by 12.

Doctoral FTE formula = total doctoral student credit hours divided by 9.

Source: Texas Higher Education Coordinating Board - PREP Online

\* Denotes less than one percent. Percent columns show rounded figures and may not total 100%.

### Fall 2010



## Total Student Enrollment by Tuition Status

### Fall 2006 - Fall 2010

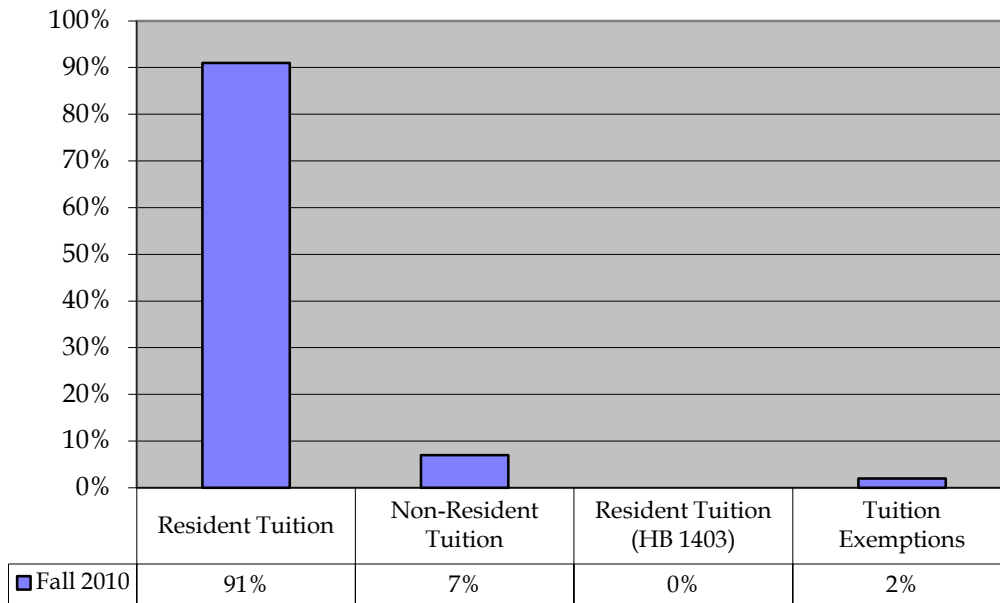
Table/Chart Enr-13

TUITION STATUS	FALL SEMESTERS									
	2006		2007		2008		2009		2010	
	(N)	(%)	(N)	(%)	(N)	(%)	(N)	(%)	(N)	(%)
Resident Tuition	7,327	92	7,680	92	7,607	93	7,807	91	7,969	91
Non-Resident Tuition	475	6	541	6	449	5	526	6	641	7
Resident Tuition (HB 1403)	27	*	35	*	0	*	0	*	0	0
Tuition Exemptions	177	2	126	2	147	2	275	3	171	2
<b>TOTALS</b>	<b>8,006</b>		<b>8,382</b>		<b>8,203</b>		<b>8,608</b>		<b>8,781</b>	

\* Denotes less than one percent. Percent columns show rounded figures and may not total 100%.

Source: Texas Higher Education Coordinating Board - PREP Online

### Fall 2010



## Full-Time and Part-Time Student Enrollment by Level Fall 2006 - Fall 2010

Table/Chart Enr-14

FULL-TIME/PART-TIME BY LEVEL	FALL SEMESTERS									
	2006		2007		2008		2009		2010	
	(N)	(%)	(N)	(%)	(N)	(%)	(N)	(%)	(N)	(%)
<b>FULL-TIME</b>										
Undergraduate	5,264	66	5,466	65	5,671	69	5,689	66	6,417	73
Masters	618	8	635	8	501	6	248	3	471	5
Doctoral	87	1	44	1	51	1	35	0	109	1
<b>PART-TIME</b>										
Undergraduate	549	7	652	8	607	7	928	11	556	6
Masters	1,463	18	1,522	18	1,332	16	1,637	19	1,209	14
Doctoral	25	*	63	*	41	*	71	*	19	0
<b>TOTAL ENROLLMENT</b>	<b>8,006</b>		<b>8,382</b>		<b>8,203</b>		<b>8,608</b>		<b>8,781</b>	
Full-Time Total	5,976	75	6,390	76	6,223	76	5,972	69	6,997	80
Part-Time Total	2,030	25	1,992	24	1,980	24	2,636	31	1,784	20

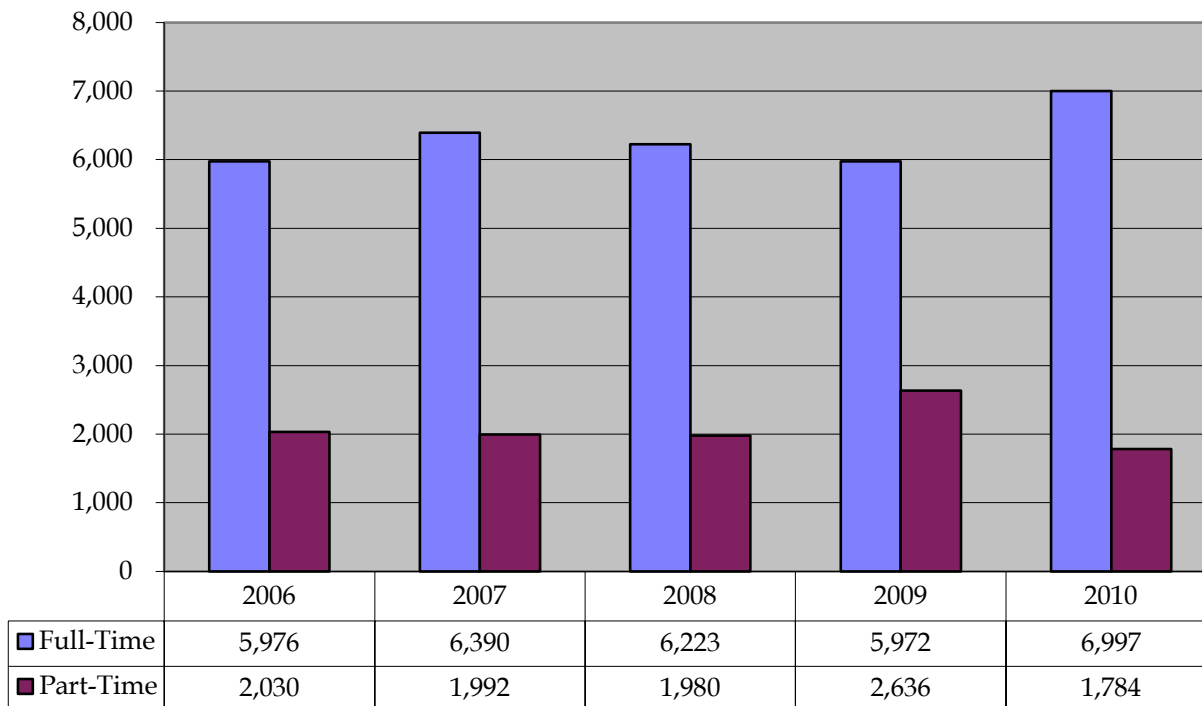
Note: A full-time undergraduate student is one who takes 12 or more credit hours per semester.

A full-time graduate student is one who takes 9 or more credit hours per semester.

\* Denotes less than one percent. Percent columns show rounded figures and may not total 100%.

Source: Texas Higher Education Coordinating Board - PREP Online

### Fall 2006 - 2010



## Top Ten Feeder High Schools Fall 2010

Table Enr-15

SCHOOL CODE	FALL 2010 NAME OF HIGH SCHOOL	CITY	STATE	ZIP CODE	# OF PV STUDENTS
443413	Nimitz High	Houston	TEXAS	77073	67
443359	Eisenhower High	Houston	TEXAS	77088	64
441967	Desoto High	Desoto	TEXAS	75115	61
446788	L V Hightower	Missouri City	TEXAS	77459	58
443454	Westbury Senior High	Houston	TEXAS	77035	55
443408	North Shore High	Houston	TEXAS	77049	52
443458	Westfield High	Houston	TEXAS	77090	51
441812	Skyline High	Dallas	TEXAS	75227	51
444841	Thurgood Marshall High	Missouri City	TEXAS	77459	45
440078	Elsik High	Houston	TEXAS	77072	45

Source: PVAMU Information Technology (FOCUS Report)

## Top Ten College Feeder Institutions Fall 2010

SCHOOL CODE	FALL 2010 NAME OF COLLEGE	CITY	STATE	ZIP CODE	# OF TRANSFERS
010633	Houston Community College	Houston	TEXAS	77004	41
003642	University of Houston	Houston	TEXAS	77204	19
011145	Lone Star College System	Houston	TEXAS	77073	23
003549	Blinn College	Brenham	TEXAS	77833	19
003642	Texas Southern University	Houston	TEXAS	77004	19
003609	San Jacinto College-Central Campus	Pasadena	TEXAS	77501	15
009331	Dallas County Community College District	Dallas	TEXAS	75215	13
003626	Tarrant County College District	Fourth Worth	TEXAS	76102	11
003593	Navarro College	Corsicana	TEXAS	75110	9
003624	Stephen F. Austin State University	Nacogdoches	TEXAS	75962	9

Source: PVAMU Information Technology (FOCUS Report)

## Foreign Headcount by Country of Origin Fall 2006-Fall 2010

Table Enr-16

Name	Code	Fall Semesters				
		2006	2007	2008	2009	2010
Bangladesh	416	5	2	1	5	5
Bermuda	417	1	1	1	1	0
Bahamas	419	8	10	9	9	7
Barbados	421	0	1	1	0	1
Brazil	430	2	1	0	0	0
Cameroon	437	2	2	2	3	4
Canada	440	2	2	2	2	0
Chad	444	1	1	0	0	0
China, Peoples Republic of	450	8	10	6	10	9
Taiwan	451	4	5	2	1	0
Colombia	455	4	4	4	2	1
Dominica	474	2	2	1	1	2
Ecuador	480	0	1	1	0	0
England	490	1	0	0	0	0
Ethiopia	492	1	1	0	0	0
France	495	0	1	2	1	1
Gabon Republic	497	1	0	0	0	0
Gambia, The	498	0	0	0	0	1
Ghana	502	3	1	2	3	3
Guatemala	510	0	0	0	0	1
India	530	2	10	10	16	14
Indonesia	535	1	1	1	1	0
Cote D'Ivoire (Ivory Coast)	561	1	1	0	0	0
Jamaica	562	52	56	55	54	41
Kenya	575	10	6	3	7	3
Lebanon	595	1	1	0	1	1
Mali	609	0	0	0	0	3
Mexico	610	2	2	2	2	1
Morocco	613	0	0	0	0	2
Nepal	615	1	1	0	2	5
Nigeria	635	13	21	19	24	19
Niger	636	1	1	1	0	0
Norway	640	0	0	0	0	1
Pakistan	645	9	8	9	10	6
Zimbabwe (Rhodesia)	675	3	1	3	5	3
Rwanda	678	0	0	0	0	1
Saudi Arabia	685	1	2	1	0	0
St. Vincent & The Grenadines	687	1	1	1	1	0
Senegal	692	0	1	1	0	0
Singapore	693	0	1	0	0	0
South Africa	700	0	1	0	0	0
Spain	695	1	0	1	0	0
Swedan	705	0	0	0	0	1
Syria	715	0	0	0	0	1
Tanzania	718	0	0	0	0	1
Thailand	720	2	1	1	0	0
Trinidad & Tobago	725	2	1	0	0	0
Turkey	730	1	1	1	1	0
Uganda	732	1	1	0	0	0
United Kindom	736	1	1	1	1	0
Burkina Faso (Upper Volta)	739	1	1	1	1	3
Venezuela	745	3	1	0	1	2
Viet Nam	750	0	0	0	0	3
<b>Total</b>		<b>155</b>	<b>167</b>	<b>145</b>	<b>165</b>	<b>146</b>

Source: Texas Higher Education Coordinating Board - PREP Online

## Total Semester Credit Hours Generated by Level

### Fall 2006 - Fall 2010

Table/Chart Sch-1

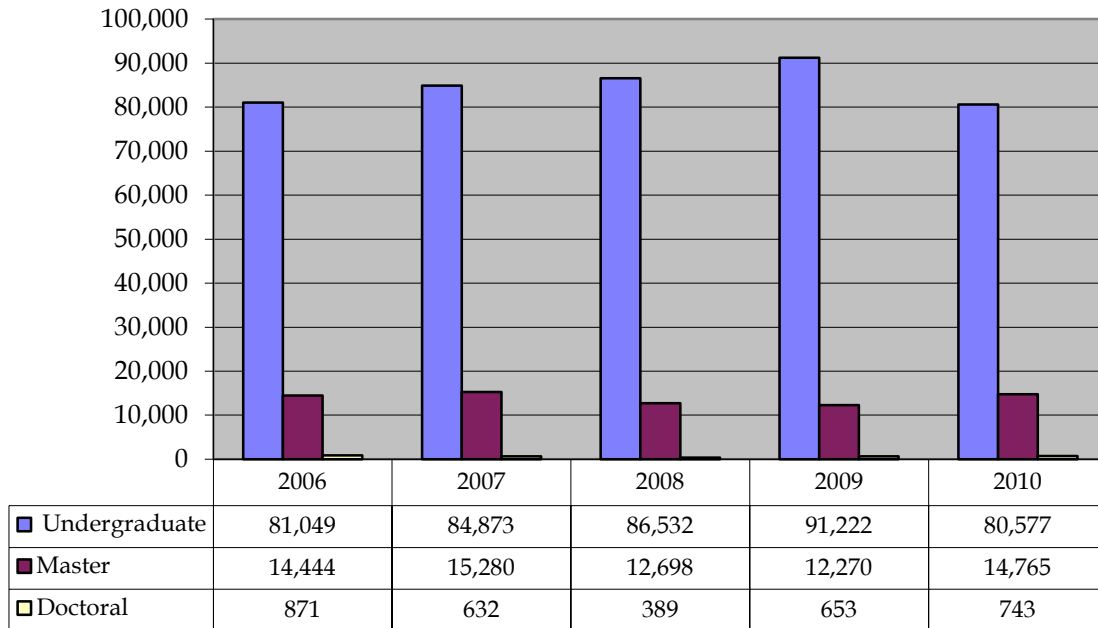
LEVEL	FALL SEMESTERS									
	2006		2007		2008		2009		2010	
	(N)	(%)	(N)	(%)	(N)	(%)	(N)	(%)	(N)	(%)
Undergraduate	81,049	84	84,873	84	86,532	87	91,222	88	94,841	89
Masters	14,444	15	15,280	15	12,698	13	12,270	12	11,370	11
Doctoral	871	1	632	1	389	0	653	1	876	1
<b>TOTALS</b>	<b>96,364</b>		<b>100,785</b>		<b>99,619</b>		<b>104,145</b>		<b>107,087</b>	

\* Denotes less than one percent. Percent columns show rounded figures and may not total 100%.

Source: Texas Higher Education Coordinating Board - PREP Online

Numbers supercede those in previous Factbooks.

### Fall 2006-2010



## Total Semester Credit Hours Generated On-Campus and Off-Campus Fall 2006 - Fall 2010

Table/Chart Sch-2

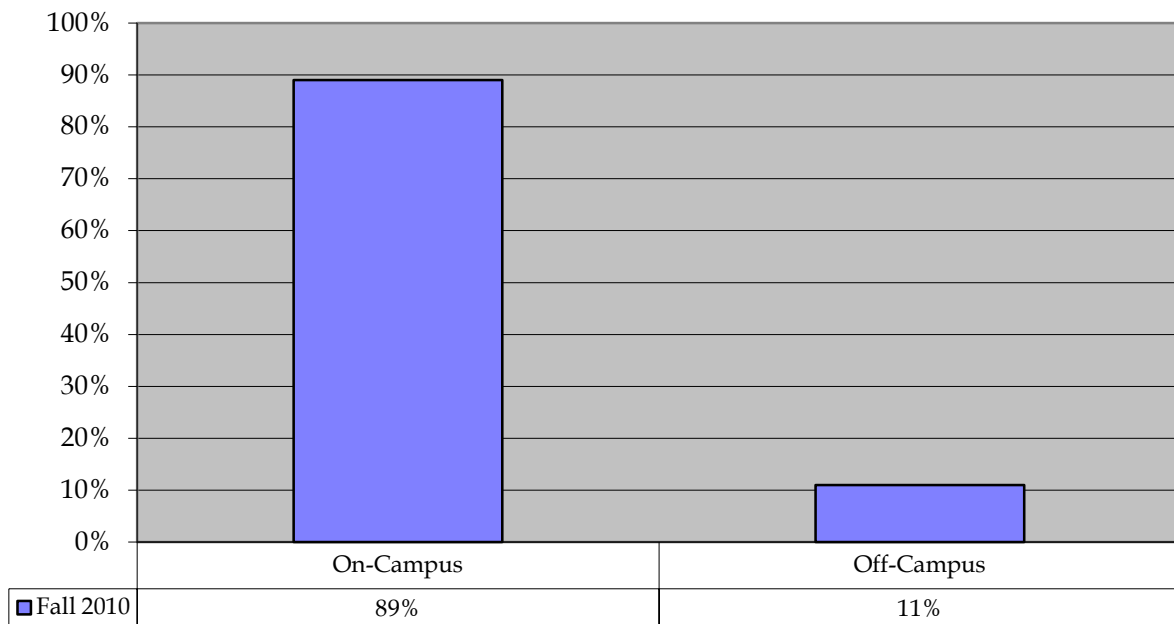
ON/OFF CAMPUS	FALL SEMESTERS									
	2006		2007		2008		2009		2010	
	(N)	(%)	(N)	(%)	(N)	(%)	(N)	(%)	(N)	(%)
On-Campus	87,103	90	90,069	89	89,316	90	92,425	89	94,880	89
Off-Campus	9,261	10	10,716	11	10,303	10	11,720	11	12,207	11
<b>TOTALS</b>	<b>96,364</b>		<b>100,785</b>		<b>99,619</b>		<b>104,145</b>		<b>107,087</b>	

\* Denotes less than one percent. Percent columns show rounded figures and may not total 100%.

Source: Texas Higher Education Coordinating Board - PREP Online

Numbers supercede those in previous Factbooks.

### Fall 2010



## Total Semester Credit Hours Taught by Faculty Rank Fall 2006-Fall 2010

Table/Chart Sch-3

RANK	FALL SEMESTERS									
	2006		2007		2008		2009		2010	
	N	(%)	N	(%)	N	(%)	N	(%)	N	(%)
Professor	10,475	10	10,561	10	11,480	12	11,480	12	11,168	11
Associate Professor	15,487	15	16,281	16	16,495	16	16,495	16	23,778	16
Assistant Professor	26,678	26	24,955	25	19,864	20	19,864	20	15,466	16
Instructor	705	1	849	1	675	1	675	1	692	1
Teaching Assistant	1,424	1	976	1	1,200	1	1,200	1	723	1
Other: **	41,595	41	47,163	47	49,905	50	49,905	50	55,260	55
<b>TOTALS</b>	<b>96,364</b>		<b>100,785</b>		<b>99,619</b>		<b>99,619</b>		<b>107,087</b>	

\* Denotes less than one percent. Percent columns show rounded figures and may not total 100%.

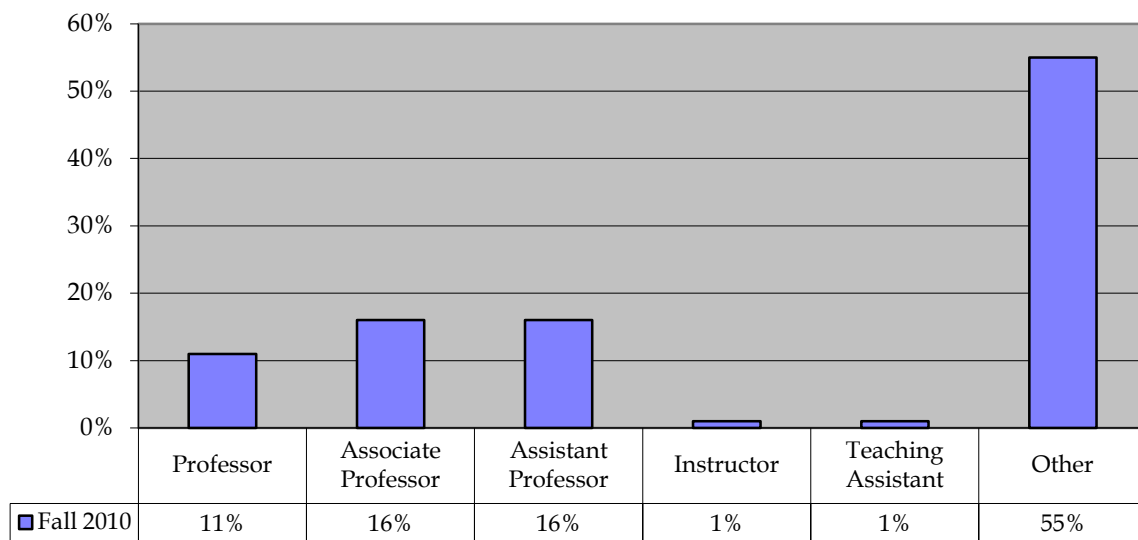
\*\*Since this is a dynamic system, numbers for previous years are not retrievable.

Note: In 1996, the Coordinating Board changed the definitions of the top four ranks to include only tenured or tenure-track faculty. The category "Other" was modified in 1996 to include faculty without tenure and not on tenure track including but not limited to adjunct, special, visiting, emeritus, and lecturer at PVAMU. "Other" also includes faculty with tenure or on tenure track from another institution.

Source: Texas Higher Education Coordinating Board - PREP Online

Numbers supercede those in previous Factbooks.

### Fall 2010



## Undergraduate Semester Credit Hours (by Colleges/Departments)

Fall 2006 - Fall 2010

Table Sch-4

COLLEGE/DEPARTMENT	FALL SEMESTERS									
	2006	%	2007	%	2008	%	2009	%	2010	%
<b>AGRICULTURE and HUMAN SCIENCES</b>										
Agriculture, Nutrition, and Human Ecology	2,991	4	3,002	0	2,697	3	2,715	0	3,498	0
<b>Subtotals</b>	<b>2,991</b>	<b>1</b>	<b>3,002</b>	<b>1</b>	<b>2,697</b>	<b>1</b>	<b>2,715</b>	<b>1</b>	<b>3,498</b>	<b>1</b>
<b>SCHOOL OF ARCHITECTURE</b>										
Art and Architecture	4,911	6	6,168	0	6,172	7	6,919	0	4,775	0
<b>Subtotals</b>	<b>4,911</b>	<b>1</b>	<b>6,168</b>	<b>1</b>	<b>6,172</b>	<b>1</b>	<b>6,919</b>	<b>1</b>	<b>4,775</b>	<b>1</b>
<b>ARTS and SCIENCES</b>										
Army Science (Army ROTC)	190	0	232	0	259	0	290	0	0	0
Biology	4,801	6	5,507	6	5,593	6	5,753	6	5,783	6
Chemistry	2,483	3	2,877	3	2,989	3	2,941	3	613	1
Languages and Communications	9,789	12	9,246	11	8,781	10	9,387	10	4,298	5
Mathematics	5,260	6	6,171	7	5,395	6	6,592	7	485	1
Music and Drama	3,366	4	3,022	4	3,041	4	3,167	3	3,818	4
Naval Science (Navy ROTC)	144	0	177	0	198	0	252	0	0	0
Physics	2,040	3	1,844	2	2,474	29	2,159	2	106	0
Social Work, Behavioral and Political Science	11,751	14	11,226	13	11,712	14	12,852	14	4,343	5
<b>Subtotals</b>	<b>39,824</b>	<b>1</b>	<b>40,302</b>	<b>1</b>	<b>40,442</b>	<b>1</b>	<b>43,393</b>	<b>1</b>	<b>19,446</b>	<b>1</b>
<b>BUSINESS</b>										
Accounting, Finance, and Information Systems	4,050	5	4,164	5	4,665	5	5,520	6	5,118	5
Management and Marketing	4,107	5	4,875	6	5,133	6	5,055	5	8,222	9
<b>Subtotals</b>	<b>8,157</b>	<b>1</b>	<b>9,039</b>	<b>1</b>	<b>9,798</b>	<b>1</b>	<b>10,575</b>	<b>1</b>	<b>13,340</b>	<b>1</b>
<b>EDUCATION</b>										
Curriculum and Instruction	1,992	2	2,028	2	1,575	2	1,794	2	5,573	6
Health and Human Performance	4,078	5	4,113	5	3,917	5	3,886	4	5,273	6
Educational Leadership and Counseling	45	0	81	0	102	0	93	0	111	0
<b>Subtotals</b>	<b>6,115</b>	<b>1</b>	<b>6,222</b>	<b>1</b>	<b>5,594</b>	<b>1</b>	<b>5,773</b>	<b>1</b>	<b>10,957</b>	<b>1</b>
<b>ENGINEERING</b>										
Chemical Engineering	628	1	624	1	675	1	1,010	1	2,851	3
Civil & Environmental Engineering	775	1	670	1	730	1	654	1	1,553	2
Computer Science	2,374	3	2,448	3	2,477	3	2,705	3	1,259	1
Electrical & Computer Engineering	1,598	2	1,642	2	1,817	2	1,661	2	4,423	5
Engineering Technology	1,374	2	1,116	1	955	1	702	1	1,769	2
Mechanical Engineering	934	1	1,109	1	1,335	2	1,404	1	3,215	3
<b>Subtotals</b>	<b>7,683</b>	<b>1</b>	<b>7,609</b>	<b>1</b>	<b>7,989</b>	<b>1</b>	<b>8,136</b>	<b>1</b>	<b>15,070</b>	<b>1</b>
<b>JUVENILE JUSTICE and PSYCHOLOGY</b>										
Juvenile Justice and Psychology	---		---		---		---		---	
Juvenile Justice <sup>1</sup>	2,430	3	2,640	3	2,895	3	3,042	3	7,270	8
Psychology <sup>2</sup>	2,929	4	2,728	3	3,153	4	5,964	6	4,481	5
<b>Subtotals</b>	<b>5,359</b>	<b>1</b>	<b>5,368</b>	<b>1</b>	<b>6,048</b>	<b>1</b>	<b>9,006</b>	<b>1</b>	<b>11,751</b>	<b>1</b>
<b>NURSING</b>										
Nursing	4,064	5	4,382	5	5,337	6	5,254	6	16,004	17
<b>Subtotals</b>	<b>4,064</b>	<b>1</b>	<b>4,382</b>	<b>1</b>	<b>5,337</b>	<b>1</b>	<b>5,254</b>	<b>1</b>	<b>16,004</b>	<b>1</b>
<b>UNIVERSITY COLLEGE</b>										
Developmental Studies	1,945	2	2,781	3	2,455	3	2,496	3	0	0
<b>Subtotals</b>	<b>1,945</b>	<b>1</b>	<b>2,781</b>	<b>1</b>	<b>2,455</b>	<b>1</b>	<b>2,496</b>	<b>1</b>	<b>0</b>	<b>1</b>
<b>UNIVERSITY TOTALS</b>	<b>81,049</b>		<b>84,873</b>		<b>86,532</b>		<b>94,267</b>		<b>94,841</b>	

See notes/references at the end of this section.

Numbers supercede those in previous Factbooks.

Juvenile Justice: The College of Juvenile Justice and Psychology split into two departments effective Fall 2006

## Masters Semester Credit Hours (by Colleges/Departments) Fall 2006- Fall 2010

Table Sch-5

COLLEGE/DEPARTMENT	FALL SEMESTERS									
	2006	%	2007	%	2008	%	2009	%	2010	%
<b>AGRICULTURE and HUMAN SCIENCES</b>										
Agriculture, Nutrition, and Human Ecology	771	5	705	5	633	5	543	4	639	6
<b>Subtotals</b>	<b>771</b>	<b>1</b>	<b>705</b>	<b>1</b>	<b>633</b>	<b>1</b>	<b>543</b>	<b>1</b>	<b>639</b>	<b>1</b>
<b>SCHOOL OF ARCHITECTURE</b>										
Art and Architecture	795	6	615	4	693	5	558	4	568	5
<b>Subtotals</b>	<b>795</b>	<b>1</b>	<b>615</b>	<b>1</b>	<b>693</b>	<b>1</b>	<b>558</b>	<b>1</b>	<b>568</b>	<b>1</b>
<b>ARTS and SCIENCES</b>										
Army Science (Army ROTC)	---		---		---		---		---	
Biology	87	1	102	1	64	1	88	1	73	1
Chemistry	75	1	72	0	38	0	95	1	59	1
Languages and Communications	27	0	45	0	66	1	72	1	75	1
Mathematics	93	1	33	0	21	0	42	0	85	1
Music and Drama	0	0	0	0	0	0	0	0		0
Naval Science (Navy ROTC)	---		---		---		---		---	
Physics	0	0	0	0	0	0	0	0		0
Social Work, Behavioral and Political Science	96	1	99	1	81	1	96	1	156	1
<b>Subtotals</b>	<b>378</b>	<b>1</b>	<b>351</b>	<b>1</b>	<b>270</b>	<b>1</b>	<b>393</b>	<b>1</b>	<b>448</b>	<b>1</b>
<b>BUSINESS</b>										
Accounting, Finance, and Information Systems	414	3	543	4	636	5	696	6	402	4
Management and Marketing	453	3	450	3	690	5	603	5	1,005	9
<b>Subtotals</b>	<b>867</b>	<b>1</b>	<b>993</b>	<b>1</b>	<b>1,326</b>	<b>1</b>	<b>1,299</b>	<b>1</b>	<b>1,407</b>	<b>1</b>
<b>EDUCATION</b>										
Curriculum and Instruction	1,134	8	843	6	858	7	849	7	691	6
Health and Human Performance	123	1	93	1	60	0	81	1	171	2
Educational Leadership and Counseling	9,033	63	9,951	65	7,422	58	7,017	56	5,539	50
<b>Subtotals</b>	<b>10,290</b>	<b>1</b>	<b>10,887</b>	<b>1</b>	<b>8,340</b>	<b>1</b>	<b>7,947</b>	<b>1</b>	<b>6,401</b>	<b>1</b>
<b>ENGINEERING</b>										
Chemical Engineering	48	0	0	0	0	0	21	0	---	
Civil & Environmental Engineering	0	0	12	0	33	0	57	0	---	
Computer Science	81	1	117	1	174	1	288	2	---	
Electrical & Computer Engineering	117	1	144	1	196	2	69	1	412	4
Engineering Technology	---		---		---		---		---	
Mechanical Engineering	294	2	249	2	39	0	237	2	111	1
<b>Subtotals</b>	<b>540</b>	<b>1</b>	<b>522</b>	<b>1</b>	<b>442</b>	<b>1</b>	<b>672</b>	<b>1</b>	<b>523</b>	<b>1</b>
<b>JUVENILE JUSTICE and PSYCHOLOGY</b>										
Juvenile Justice and Psychology	---		---		---		---		---	
Juvenile Justice <sup>1</sup>	156	1	195	1	216	2	126	1	154	1
Psychology <sup>2</sup>	204	1	237	2	162	1	267	2	186	2
<b>Subtotals</b>	<b>360</b>	<b>1</b>	<b>432</b>	<b>1</b>	<b>378</b>	<b>1</b>	<b>393</b>	<b>1</b>	<b>340</b>	<b>1</b>
<b>NURSING</b>										
Nursing	443	3	775	5	616	5	627	5	695	6
<b>Subtotals</b>	<b>443</b>	<b>1</b>	<b>775</b>	<b>1</b>	<b>616</b>	<b>1</b>	<b>627</b>	<b>1</b>	<b>695</b>	<b>1</b>
<b>UNIVERSITY COLLEGE</b>										
Developmental Studies	---		---		---		---		---	
<b>Subtotals</b>	<b>---</b>	<b>---</b>	<b>---</b>	<b>---</b>	<b>---</b>	<b>---</b>	<b>---</b>	<b>---</b>	<b>---</b>	<b>---</b>
<b>UNIVERSITY TOTALS</b>	<b>14,444</b>		<b>15,280</b>		<b>12,698</b>		<b>12,432</b>		<b>11,021</b>	

See notes/references at the end of this section.

Numbers supercede those in previous Factbooks.

Juvenile Justice: The college of Juvenile Justice and Psychology split into two departments effective Fall 2006

## Doctoral Semester Credit Hours (by Colleges/Departments) Fall 2006 - Fall 2010

Table Sch-6

COLLEGE/DEPARTMENT	FALL SEMESTERS									
	2006	%	2007	%	2008	%	2009	%	2010	%
<b>AGRICULTURE and HUMAN SCIENCES</b>										
Agriculture, Nutrition, and Human Ecology	---		---		---		---		---	
<b>Subtotals</b>	---		---		---		---		---	
<b>SCHOOL OF ARCHITECTURE</b>										
Art and Architecture	---		---		---		---		---	
<b>Subtotals</b>	---		---		---		---		---	
<b>ARTS and SCIENCES</b>										
Army Science (Army ROTC)	---		---		---		---		---	
Biology	---		---		---		---		---	
Chemistry	---		---		---		---		---	
Languages and Communications	---		---		---		---		---	
Mathematics	---		---		---		---		---	
Music and Drama	---		---		---		---		---	
Naval Science (Navy ROTC)	---		---		---		---		---	
Physics	---		---		---		---		---	
Social Work, Behavioral and Political Science	---		---		---		---		---	
<b>Subtotals</b>	---		---		---		---		---	
<b>BUSINESS</b>										
Accounting, Finance, and Information Systems	---		---		---		---		---	
Management and Marketing	---		---		---		---		---	
<b>Subtotals</b>	---		---		---		---		---	
<b>EDUCATION</b>										
Curriculum and Instruction	---		---		---		---		---	
Health and Human Performance	---		---		---		---		---	
Educational Leadership & Counseling	465	53	285	45	192	49	354	54	495	57
<b>Subtotals</b>	<b>465</b>	<b>1</b>	<b>285</b>	<b>1</b>	<b>192</b>	<b>1</b>	<b>354</b>	<b>1</b>	<b>495</b>	<b>1</b>
<b>ENGINEERING</b>										
Chemical Engineering	---		---		---		---		---	
Civil & Environmental Engineering	---		---		---		---		---	
Computer Science	---		---		---		---		---	
Electrical & Computer Engineering	84	10	66	8	44	5	60	9	135	15
Engineering Technology	---		---		---		---		---	
Mechanical Engineering	---		---		---		---		---	
<b>Subtotals</b>	<b>84</b>	<b>1</b>	<b>66</b>	<b>1</b>	<b>44</b>	<b>1</b>	<b>60</b>	<b>1</b>	<b>135</b>	<b>1</b>
<b>JUVENILE JUSTICE and PSYCHOLOGY</b>										
Juvenile Justice and Psychology	---		---		---		---		---	
Juvenile Justice <sup>1</sup>	200	23	136	22	99	25	147	23	150	17
Psychology <sup>2</sup>	122	14	145	23	54	14	92	14	96	11
<b>Subtotals</b>	<b>322</b>	<b>1</b>	<b>281</b>	<b>1</b>	<b>153</b>	<b>1</b>	<b>239</b>	<b>1</b>	<b>246</b>	<b>1</b>
<b>NURSING</b>										
Nursing	---		---		---		---		---	
<b>Subtotals</b>	---		---		---		---		---	
<b>UNIVERSITY COLLEGE</b>										
Developmental Studies	---		---		---		---		---	
<b>Subtotals</b>	---		---		---		---		---	
<b>UNIVERSITY TOTALS</b>	<b>871</b>		<b>632</b>	<b>3</b>	<b>389</b>		<b>653</b>		<b>876</b>	

See notes/references at the end of this section.

Numbers supercede those in previous Factbooks.

Juvenile Justice: The college of Juvenile Justice and Psychology split into two departments effective Fall 2006

## Total Semester Credit Hours (by Colleges/Departments)

### Fall 2006 - Fall 2010

Table Sch-7

COLLEGE/DEPARTMENT	FALL SEMESTERS									
	2006	%	2007	%	2008	%	2009	%	2010	%
<b>AGRICULTURE and HUMAN SCIENCES</b>										
Agriculture, Nutrition, and Human Ecology	3,762	4	3,707	4	3,330	3	3,258	3	4,137	4
<b>Subtotals</b>	<b>3,762</b>	<b>1</b>	<b>3,707</b>	<b>1</b>	<b>3,330</b>	<b>1</b>	<b>3,258</b>	<b>1</b>	<b>4,137</b>	<b>1</b>
<b>SCHOOL OF ARCHITECTURE</b>										
Art and Architecture	5,706	6	6,783	7	6,865	7	7,474	7	5,343	5
<b>Subtotals</b>	<b>5,706</b>	<b>1</b>	<b>6,783</b>	<b>1</b>	<b>6,865</b>	<b>1</b>	<b>7,474</b>	<b>1</b>	<b>5,343</b>	<b>1</b>
<b>ARTS and SCIENCES</b>										
Army Science (Army ROTC)	190	0	232	0	259	0	290	0	0	0
Biology	4,888	5	5,609	6	5,657	6	5,841	5	5,856	5
Chemistry	2,558	3	2,949	3	3,027	3	3,036	3	672	1
Languages and Communications	9,816	10	9,291	9	8,847	9	9,423	9	4,373	4
Mathematics	5,353	6	6,204	6	5,416	5	6,634	6	570	1
Music and Drama	3,366	3	3,022	3	3,041	3	3,167	3	3,818	4
Naval Science (Navy ROTC)	144	0	177	0	198	0	252	0	0	0
Physics	2,040	2	1,844	2	2,474	2	2,159	2	106	0
Social Work, Behavioral and Political Science	11,847	12	11,325	11	11,793	12	12,948	12	4,499	4
<b>Subtotals</b>	<b>40,202</b>	<b>1</b>	<b>40,653</b>	<b>1</b>	<b>40,712</b>	<b>1</b>	<b>43,750</b>	<b>1</b>	<b>19,894</b>	<b>1</b>
<b>BUSINESS</b>										
Accounting, Finance, and Information Systems	4,464	5	4,707	5	5,301	5	6,216	6	5,520	5
Management and Marketing	4,560	5	5,325	5	5,823	6	5,658	5	9,227	9
<b>Subtotals</b>	<b>9,024</b>	<b>1</b>	<b>10,032</b>	<b>1</b>	<b>11,124</b>	<b>1</b>	<b>11,874</b>	<b>1</b>	<b>14,747</b>	<b>1</b>
<b>EDUCATION</b>										
Curriculum and Instruction	3,126	3	2,871	3	2,433	2	2,643	2	6,264	6
Health and Human Performance	4,201	4	4,206	4	3,977	4	3,967	4	6,145	6
Educational Leadership and Counseling	9,543	10	10,317	10	7,716	8	7,464	7	5,444	5
<b>Subtotals</b>	<b>16,870</b>	<b>1</b>	<b>17,394</b>	<b>1</b>	<b>14,126</b>	<b>1</b>	<b>14,074</b>	<b>1</b>	<b>17,853</b>	<b>1</b>
<b>ENGINEERING</b>										
Chemical Engineering	676	1	624	1	675	1	1,031	1	2,851	3
Civil & Environmental Engineering	775	1	682	1	763	1	711	1	6,222	6
Computer Science	2,455	3	2,565	3	2,651	3	2,993	3	1,608	2
Electrical & Computer Engineering	1,799	2	1,852	2	2,057	2	1,790	2	0	0
Engineering Technology	1,374	1	1,116	1	955	1	702	1	1,769	2
Mechanical Engineering and General	1,228	1	1,358	1	1,374	1	1,641	2	3,627	3
<b>Subtotals</b>	<b>8,307</b>	<b>1</b>	<b>8,197</b>	<b>1</b>	<b>8,475</b>	<b>1</b>	<b>8,868</b>	<b>1</b>	<b>16,077</b>	<b>1</b>
<b>JUVENILE JUSTICE and PSYCHOLOGY</b>										
Juvenile Justice and Psychology	---		---		---		---		---	
Juvenile Justice <sup>1</sup>	2,786	3	2,971	3	3,210	3	3,315	3	7,574	7
Psychology <sup>2</sup>	3,255	3	3,110	3	3,369	3	6,323	6	4,763	4
<b>Subtotals</b>	<b>6,041</b>	<b>1</b>	<b>6,081</b>	<b>1</b>	<b>6,579</b>	<b>1</b>	<b>9,638</b>	<b>1</b>	<b>12,337</b>	<b>1</b>
<b>NURSING</b>										
Nursing	4,507	5	5,157	5	5,953	6	5,881	5	16,699	16
<b>Subtotals</b>	<b>4,507</b>	<b>1</b>	<b>5,157</b>	<b>1</b>	<b>5,953</b>	<b>1</b>	<b>5,881</b>	<b>1</b>	<b>16,699</b>	<b>1</b>
<b>UNIVERSITY COLLEGE</b>										
Developmental Studies	1,945	2	2,781	3	2,455	2	2,496	2	0	0
<b>Subtotals</b>	<b>1,945</b>	<b>1</b>	<b>2,781</b>	<b>1</b>	<b>2,455</b>	<b>1</b>	<b>2,496</b>	<b>1</b>	<b>0</b>	<b>1</b>
<b>UNIVERSITY TOTALS</b>	<b>96,364</b>		<b>100,785</b>		<b>99,619</b>		<b>107,313</b>		<b>107,087</b>	

See notes/references at the end of this section.

Numbers supercede those in previous Factbooks.

Juvenile Justice: The college of Juvenile Justice and Psychology split into two departments effective Fall 2006

# Approved Degree Programs

## Academic Year 2009-2010

Table Deg-1

### DEGREE LEVEL

	Baccalaureate	Master	Doctoral
<b>COLLEGE OF AGRICULTURE AND HUMAN SCIENCES</b>			
<b>Department of Agriculture, Nutrition, and Human Ecology</b>			
Agriculture	BSAG		
Agricultural Economics		MS	
Animal Science		MS	
Soil Science		MS	
Human Sciences		MS	
Family and Community Services	BSHS		
Human Nutrition and Food	BSDIET		
<b>SCHOOL OF ARCHITECTURE</b>			
Architecture	BS	MARCH	
Architecture (2006 - Being phased out)	*BARCH		
Community Development		MCD	
Construction Science	BS		
<b>M&amp;J SAMUEL BRAILSFORD COLLEGE OF ARTS AND SCIENCES</b>			
<b>Department of Biology</b>			
Biology	BS	MS	
Bio-Environmental Toxicology		X	
Medical Technology	BS		
<b>Department of Chemistry</b>			
Chemistry	BS	MS	

Continued on next page

Note: X - Indicates area of specialization within broader degree.

\* - Indicates a degree program that is in the process of being phased out.

[ ] - Indicates a degree is available only within the area of specialization.

Source: Texas Higher Education Coordinating Board - Inventory of Approved Degree Programs.

Data as of November 2010

# Approved Degree Programs

## Academic Year 2009-2010

*Table Deg-1 (continued)*

**DEGREE LEVEL**

	Baccalaureate	Master	Doctoral
<b>Department of Languages and Communications</b>			
Communications	BA		
English	BA	MA	
Spanish	BA		
<b>Department of Mathematics</b>			
Mathematics	BS	MS	
<b>Department of Music and Drama</b>			
Drama	BA		
Music	BA		
Applied Music	[BM]		
Applied Music - Clarinet	X		
Applied Music - Euphonium	X		
Applied Music - Flute	X		
Applied Music - Percussion	X		
Applied Music - Piano	X		
Applied Music - Saxophone	X		
Applied Music - Trombone	X		
Applied Music - Trumpet	X		
Applied Music - Voice	X		
<b>Department of Physics</b>			
Physics	BS		

*Continued on next page*

*Note: X - Indicates area of specialization within broader degree.*

*\* - Indicates a degree program that is in the process of being phased out.*

*[ ] - Indicates a degree is available only within the area of specialization.*

*Source: Texas Higher Education Coordinating Board - Inventory of Approved Degree Programs.*

## Approved Degree Programs

### Academic Year 2009-2010

Table Deg-1 (continued)

#### DEGREE LEVEL

	Baccalaureate	Master	Doctoral
<b>Division of Social Work, Behavioral and Political Sciences</b>			
History	BA		
Political Science	BA		
Social Work	BASW		
Sociology	BA	MA	
<b>COLLEGE OF BUSINESS</b>			
General Business Administration		MBA	
<b>Department of Accounting, Finance and Management Information Systems</b>			
Accounting	BBA	MS	
Finance	BBA		
Management Information Systems	BBA		
<b>Department of Management and Marketing</b>			
Management	BBA		
Marketing	BBA		
<b>WHITLOWE RADCLIFFE GREEN COLLEGE OF EDUCATION</b>			
<b>Department of Curriculum and Instruction</b>			
Curriculum and Instruction		MSED	MED
Agriculture Education		X	X
Educational Media and Technology			X
Elementary Education		X	X
English Education		X	X
Home Economics Education		X	X
Industrial Education		X	X
Mathematics Education		X	X

Continued on next page

Note: X - Indicates area of specialization within broader degree.

\* - Indicates a degree program that is in the process of being phased out.

[ ] - Indicates a degree is available only within the area of specialization.

Source: Texas Higher Education Coordinating Board - Inventory of Approved Degree Programs.

## Approved Degree Programs Academic Year 2009-2010

Table Deg-1 (continued)

	DEGREE LEVEL		
	Baccalaureate	Master	Doctoral
<b>Department of Curriculum and Instruction</b> (continued)			
Curriculum and Instruction		MSED	MED
Music Education		X	X
Reading Education		X	X
Science Education		X	X
Interdisciplinary Studies	BSIS		
Special Education		MSED	MED
Industrial Technology Education	BSTCH		
<b>Department of Health and Human Performance</b>			
Health and Physical Education		[MED]	[MS]
H&PE - Health		X	X
H&PE - Physical Education		X	X
Health	BS		
Human Performance	BS		
<b>Department of Educational Leadership and Counseling</b>			
Educational Administration		MSED	MED
Educational Leadership			PhD
Ed Admn - Instructional Supervision		X	X
Counseling		MSED	MA
<b>COLLEGE OF ENGINEERING</b>			
Engineering		MSENGR	
<b>Department of Chemical Engineering</b>			
Chemical Engineering	BSCHE		
<b>Department of Civil and Environmental Engineering</b>			
Civil Engineering	BSCE		

Continued on next page

Note: X - Indicates area of specialization within broader degree.

\* - Indicates a degree program that is in the process of being phased out.

[ ] - Indicates a degree is available only within the area of specialization.

Source: Texas Higher Education Coordinating Board - Inventory of Approved Degree Programs.

## Approved Degree Programs

### Academic Year 2009-2010

Table Deg-1 (continued)

	<i>DEGREE LEVEL</i>		
	Baccalaureate	Master	Doctoral
<b>Department of Computer Science</b>			
Computer Science	BS	MS	
Computer Information Systems		MS	
<b>Department of Electrical and Computer Engineering</b>			
Computer Engineering	BS		
Electrical Engineering	BSEE	MSEE	PhD
<b>Department of Engineering Technology</b>			
Computer Aided Drafting and Design	BSIT		
Computer Engineering Technology	BSCET		
Electrical Engineering Technology	BSEET		
<b>Department of Mechanical Engineering</b>			
Mechanical Engineering	BSME		
<b>COLLEGE OF JUVENILE JUSTICE AND PSYCHOLOGY</b>			
<b>Department of Justice Studies</b>			
Criminal Justice	BSCJ		
Criminal Justice - Juvenile Justice	X		
Juvenile Justice		MSJJ	PhD
<b>Department of Psychology</b>			
Juvenile Forensic Psychology		MSJFP	
Clinical Adolescent Psychology			PhD
Psychology	BS		
<b>COLLEGE OF NURSING</b>			
<b>Department of Nursing</b>			
Nursing	BSN	[MSN]	
Nursing Administration		X	
Nursing Practitioner		X	
Nurse Education		X	

Note: X - Indicates area of specialization within broader degree.

\* - Indicates a degree program that is in the process of being phased out.

[ ] - Indicates a degree is available only within the area of specialization.

Source: Texas Higher Education Coordinating Board - Inventory of Approved Degree Programs.

## Total Degrees Awarded By Level/Gender AY 2005-2006 through 2009-2010

Table/Chart Deg-2

LEVEL/GENDER	2005-2006		2006-2007		2007-2008		2008-2009		2009-2010	
	(N)	(%)	(N)	(%)	(N)	(%)	(N)	(%)	(N)	(%)
<b>UNDERGRADUATE</b>										
Male	338	37	348	41	327	42	318	38	331	38
Female	566	63	503	59	460	58	513	62	547	62
<b>GRADUATE</b>										
Male	161	23	189	25	184	24	187	27	138	25
Female	552	77	568	75	581	76	498	73	422	75
<b>TOTAL DEGREES AWARDED</b>	<b>1,617</b>		<b>1,608</b>		<b>1,552</b>		<b>1,516</b>		<b>1,438</b>	

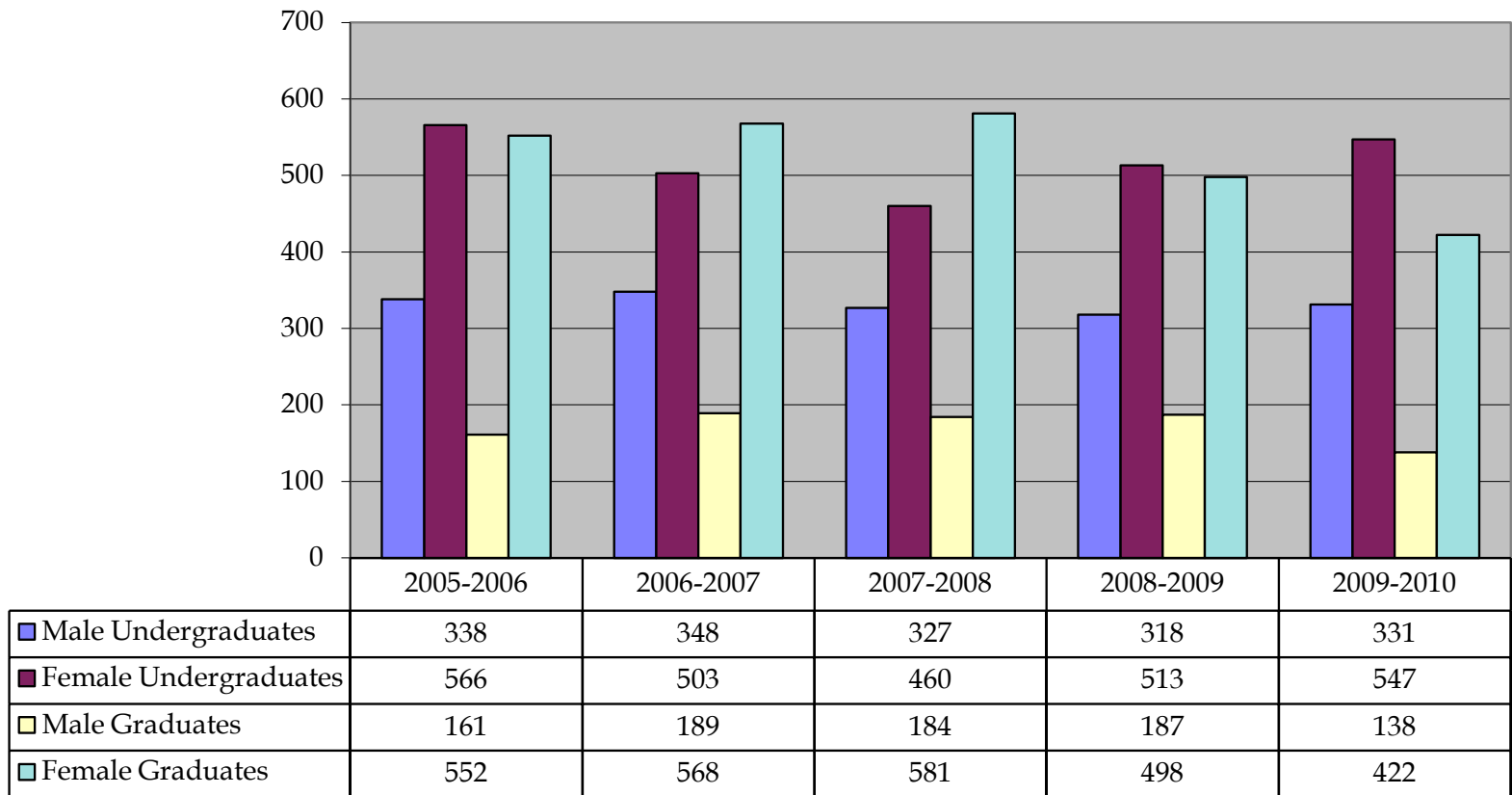
Undergraduate Total	904	56	851	53	787	51	831	55	878	61
Graduate Total	713	44	757	47	765	49	685	45	560	39

Male Total	531	36	537	33	511	33	505	33	469	33
Female Total	942	64	1,071	67	1,041	67	1,011	67	969	67

Note: Degree periods include December of beginning year; May and August of ending year.

Source: Texas Higher Education Coordinating Board - PREP online

### Academic Year 2005 through 2010



## Total Degrees Awarded By Ethnicity

Academic Year 2005-2006 through 2009-2010

Table/Chart Deg-3

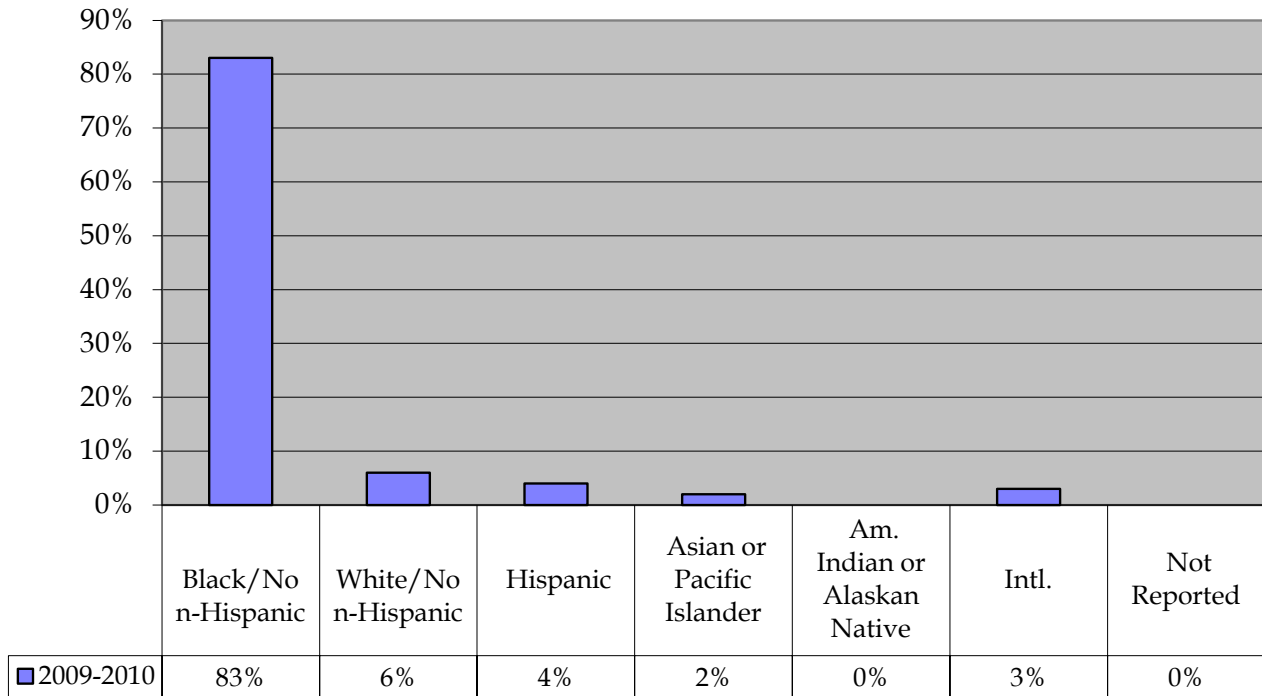
Ethnicity										
	2005-2006		2006-2007		2007-2008		2008-2009		2009-2010	
	(N)	(%)	(N)	(%)	(N)	(%)	(N)	(%)	(N)	(%)
Black/Non-Hispanic	1,386	86	1,365	85	1,327	86	1,264	83	1,168	82
White/Non-Hispanic	123	8	102	6	90	6	96	6	72	5
Hispanic	51	3	63	4	54	3	65	4	79	6
Asian or Pacific Islander	17	1	27	2	23	1	34	2	38	3
Am. Indian or Alaskan Native	2	*	2	*	2	*	4	*	4	0
International	35	2	46	3	49	3	42	3	48	3
Not Reported	3	*	3	*	7	*	13	*	14	1
<b>TOTALS</b>	<b>1,617</b>		<b>1,608</b>		<b>1,552</b>		<b>1,518</b>		<b>1,423</b>	

\* Denotes less than one percent. Percent columns show rounded figures and may not total 100%.

Note: Degree periods include December of beginning year; May and August of ending year.

Source: Texas Higher Education Coordinating Board - PREP Online

### 2009-2010



# Undergraduate and Graduate Degrees Awarded

AY 2005-2006 through 2009-2010

Table Deg-4 (continued)

College of Agriculture and Human Sciences

DEPARTMENT AND PROGRAM	ACADEMIC YEAR AND LEVEL															
	CIP CODES	2005-2006			2006-2007			2007-2008			2008-2009			2009-2010		
		U	M	D	U	M	D	U	M	D	U	M	D	U	M	D
<b>AGRICULTURE, NUTRITION, AND HUMAN ECOLOGY</b>																
Agriculture	01000000	29	0	---	23	0	---	22	0	---	24	0	---	19	0	---
Agricultural Economics	01010300	---	1	---	---	1	---	---	0	---	---	0	---	---	0	---
Animal Science	01090100	---	5	---	---	2	---	---	0	---	---	0	---	---	0	---
Soil Science	01120100	---	0	---	---	3	---	---	1	---	---	0	---	---	0	---
Human Sciences	19010100	---	47	---	---	24	---	---	25	---	---	18	---	---	17	---
Family and Community Services	19010100	18	---	---	4	---	---	3	---	---	1	---	---	4	---	---
Human Nutrition and Food	19050100	6	---	---	6	---	---	18	---	---	17	---	---	7	---	---
<b>TOTALS</b>		<b>53</b>	<b>53</b>	<b>---</b>	<b>33</b>	<b>30</b>	<b>---</b>	<b>43</b>	<b>26</b>	<b>---</b>	<b>42</b>	<b>18</b>	<b>---</b>	<b>30</b>	<b>17</b>	<b>---</b>

School of Architecture and Art

DEPARTMENT AND PROGRAM	ACADEMIC YEAR AND LEVEL															
	CIP CODES	2005-2006			2006-2007			2007-2008			2008-2009			2009-2010		
		U	M	D	U	M	D	U	M	D	U	M	D	U	M	D
<b>ARCHITECTURE AND ART</b>																
Architecture	04020100	32	7	---	24	4	---	47	10	---	30	23	---	46	15	---
Community Development	04030100	---	26	---	---	36	---	---	15	---	---	17	---	---	20	---
Construction Science	15100100	7	---	---	11	---	---	5	---	---	10	---	---	20	---	---
<b>TOTALS</b>		<b>39</b>	<b>33</b>	<b>---</b>	<b>35</b>	<b>40</b>	<b>---</b>	<b>52</b>	<b>25</b>	<b>---</b>	<b>40</b>	<b>40</b>	<b>---</b>	<b>66</b>	<b>35</b>	<b>---</b>

Note: Degree periods include fall of beginning year (December graduation), spring (May graduation) and summer (August graduation) of ending year.

Source: Texas Higher Education Coordinating Board PREP Online

# Undergraduate and Graduate Degrees Awarded

## *College of Arts and Sciences*

AY 2005-2006 through 2009-2010

Table Deg-4 (continued)

DEPARTMENT AND PROGRAM	ACADEMIC YEAR AND LEVEL															
	CIP CODES	2005-2006			2006-2007			2007-2008			2008-2009			2009-2010		
		U	M	D	U	M	D	U	M	D	U	M	D	U	M	D
<b>BIOLOGY</b>																
Biology	26010100	64	0	---	43	0	---	56	0	---	43	4	---	38	1	---
Biology - Environmental Toxicology	26100400	---	0	---	---	0	---	---	0	---	---	---	---	---	---	---
Medical Technology	51100500	0	---	---	0	---	---	0	---	---	0	---	---	0	---	---
<b>CHEMISTRY</b>																
Chemistry	40050100	1	1	---	4	1	---	3	1	---	3	2	---	6	1	---
<b>LANGUAGES AND COMMUNICATIONS</b>																
Communications	09010100	40	---	---	37	---	---	53	---	---	46	---	---	34	---	---
English	23010100	14	0	---	8	0	---	11	0	---	13	0	---	5	1	---
Spanish	16090500	0	---	---	0	---	---	3	---	---	4	---	---	2	---	---
<b>MATHEMATICS</b>																
Mathematics	27010100	4	5	---	8	5	---	5	2	---	3	4	---	6	1	---
<b>MUSIC and DRAMA</b>																
Drama	50050100	12	---	---	4	---	---	4	---	---	4	---	---	6	---	---
Music	50090100	1	---	---	6	---	---	1	---	---	3	---	---	1	---	---
Applied Music	50090300													3	---	---
Applied Music - Clarinet	50090302	0	---	---	0	---	---	0	---	---	0	---	---	0	---	---
Applied Music - Euphonium	50090301	0	---	---	1	---	---	1	---	---	0	---	---	0	---	---
Applied Music - Flute	50090302	1	---	---	3	---	---	1	---	---	0	---	---	0	---	---
Applied Music - Percussion	50090303	1	---	---	0	---	---	1	---	---	0	---	---	0	---	---
Applied Music - Piano	50090700	0	---	---	0	---	---	0	---	---	0	---	---	0	---	---
Applied Music - Saxophone	50090302	0	---	---	0	---	---	0	---	---	0	---	---	0	---	---
Applied Music - Trombone	50090301	0	---	---	0	---	---	0	---	---	0	---	---	0	---	---
Applied Music - Trumpet	50090301	0	---	---	0	---	---	0	---	---	0	---	---	0	---	---
Applied Music - Voice	50090800	1	---	---	0	---	---	0	---	---	0	---	---	0	---	---

Continued on next page.

Note: Degree periods include fall of beginning year (December graduation), spring (May graduation) and summer (August graduation) of ending year.

Source: Texas Higher Education Coordinating Board PREP Online

## Undergraduate and Graduate Degrees Awarded

AY 2005-2006 through 2009-2010

Table Deg-4 (continued)

College of Arts and Sciences

DEPARTMENT AND PROGRAM	ACADEMIC YEAR AND LEVEL															
	CIP CODES	2005-2006			2006-2007			2007-2008			2008-2009			2009-2010		
		U	M	D	U	M	D	U	M	D	U	M	D	U	M	D
<b>PHYSICS</b>																
Physics	40080100	1	---	---	0	---	---	0	---	---	1	---	---	0	---	---
<b>SOCIAL WORK, BEHAVIORAL AND POLITICAL SCIENCE</b>																
History	54010100	7	---	---	7	---	---	4	---	---	5	---	---	7	---	---
Political Science	45100100	17	---	---	6	---	---	12	---	---	9	---	---	12	---	---
Sociology	45110100	14	9	---	9	7	---	5	6	---	8	6	---	1	1	---
Social Work	44070100	12	---	---	24	---	---	19	---	---	21	---	---	33	---	---
<b>TOTALS</b>		190	15	---	160	13	---	179	9	---	163	16	---	154	1	---

College of Business

DEPARTMENT AND PROGRAM	ACADEMIC YEAR AND LEVEL															
	CIP CODES	2005-2006			2006-2007			2007-2008			2008-2009			2009-2010		
		U	M	D	U	M	D	U	M	D	U	M	D	U	M	D
<b>GENERAL BUSINESS ADMINISTRATION</b>																
General Business Administration	52020100	---	36	---	---	28	---	---	24	---	---	---	---	---	---	---
<b>ACCOUNTING, FINANCE, AND MANAGEMENT INFORMATION SYSTEMS</b>																
Accounting	52030100	22	6	---	27	4	---	20	8	---	25	5	---	34	17	---
Finance	52080100	14	---	---	12	---	---	9	---	---	9	---	---	16	---	---
Management Information Systems	52120100	32	---	---	37	---	---	15	---	---	15	---	---	13	---	---
<b>MANAGEMENT AND MARKETING</b>																
Management	52020100	50	---	---	33	---	---	29	---	---	33	26	---	33	31	---
Marketing	52140100	23	---	---	28	---	---	19	---	---	24	---	---	32	---	---
<b>TOTALS</b>		141	42	---	137	32	---	92	32	---	92	32	---	128	48	---

Note: Degree periods include fall of beginning year (December graduation), spring (May graduation) and summer (August graduation) of ending year.

Source: Texas Higher Education Coordinating Board PREP Online

# Undergraduate and Graduate Degrees Awarded

AY 2005-2006 through 2009-2010

Table Deg-4 (continued)

College of Education

DEPARTMENT AND PROGRAM	ACADEMIC YEAR AND LEVEL															
	CIP CODES	2005-2006			2006-2007			2007-2008			2008-2009			2009-2010		
		U	M	D	U	M	D	U	M	D	U	M	D	U	M	D
<b>CURRICULUM AND INSTRUCTION</b>																
Curriculum and Instruction	13030100	---	9	---	---	10	---	---	13	---	---	33	---	---	7	---
Agriculture Education	13130100	---	0	---	---	1	---	---	3	---	---	---	---	---	---	---
Education Media and Technology	13050100	---	4	---	---	1	---	---	4	---	---	---	---	---	---	---
Elementary Education	13120200	---	0	---	---	2	---	---	0	---	---	---	---	---	---	---
English Education	13130500	---	1	---	---	1	---	---	0	---	---	---	---	---	---	---
Home Economics Education	13130800	---	0	---	---	0	---	---	0	---	---	---	---	---	---	---
Industrial Education	13130900	---	1	---	---	0	---	---	1	---	---	---	---	---	---	---
Mathematics Education	13131100	---	2	---	---	1	---	---	0	---	---	---	---	---	---	---
Music Education	13131200	---	0	---	---	0	---	---	0	---	---	---	---	---	---	---
Reading Education	13131500	---	25	---	---	16	---	---	6	---	---	---	---	---	5	---
Science Education	13131600	---	0	---	---	0	---	---	0	---	---	---	---	---	---	---
Special Education	13100100	---	20	---	---	23	---	---	23	---	---	33	---	---	---	---
Industrial Technology	15061200	2	---	---	1	---	---	1	---	---	1	---	---	---	---	---
Interdisciplinary Studies	30999901	74	---	---	68	---	---	57	---	---	58	0	---	76	---	---
<b>HEALTH AND HUMAN PERFORMANCE</b>																
Health	51000001	47	---	---	31	---	---	32	---	---	39	---	---	28	---	---
Health Teacher Education	13130700	---	4	---	---	4	---	---	7	---	---	---	---	---	2	---
Human Performance	31050100	27	---	---	42	0	---	32	0	---	37	5	---	13	---	---
Physical Education	13131400	---	8	---	---	2	---	---	2	---	---	---	---	---	2	---
<b>SCHOOL SERVICES</b>																
Counseling (Counseling Education)	13110100	---	2	---	---	0	---	---	0	---	---	205	---	---	---	---
Counseling (Counseling Psychology)	42060100	---	249	---	---	268	---	---	262	---	---	---	---	---	194	---
Educ. Admin. and Instr. Supervision	13040100	---	201	---	---	255	5	---	274	5	---	207	15	---	151	5
<b>TOTALS</b>		<b>150</b>	<b>526</b>	<b>---</b>	<b>142</b>	<b>584</b>	<b>---</b>	<b>122</b>	<b>595</b>	<b>5</b>	<b>135</b>	<b>483</b>	<b>15</b>	<b>117</b>	<b>361</b>	<b>5</b>

# Undergraduate and Graduate Degrees Awarded

## AY 2005-2006 through 2009-2010

Table Deg-4 (continued)

College of Nursing

DEPARTMENT AND PROGRAM	ACADEMIC YEAR AND LEVEL															
	CIP CODES	2005-2006			2006-2007			2007-2008			2008-2009			2009-2010		
		U	M	D	U	M	D	U	M	D	U	M	D	U	M	D
<b>NURSING</b>																
Nursing (BSN)	51160100	93	---	---	107	---	---	80	---	---	124	32	---	139	---	---
Nurse Administration	51160200	---	---	---	---	---	---	11	---	---	---	---	---	6	---	---
Nurse Practitioner	51160500	---	9	---	---	7	---	---	11	---	---	---	---	24	---	---
Nursing Education	51169960	---	---	---	---	3	---	---	4	---	---	---	---	5	---	---
<b>TOTALS</b>		<b>93</b>	<b>9</b>	<b>---</b>	<b>107</b>	<b>10</b>	<b>---</b>	<b>80</b>	<b>26</b>	<b>---</b>	<b>124</b>	<b>32</b>	<b>---</b>	<b>139</b>	<b>35</b>	<b>---</b>

Note: Degree periods include fall of beginning year (December graduation), spring (May graduation) and summer (August graduation) of ending year.

Source: Texas Higher Education Coordinating Board PREP Online

# Undergraduate and Graduate Degrees Awarded

AY 2005-2006 through 2009-2010

Table Deg-4 (continued)

College of Engineering

DEPARTMENT AND PROGRAM	CIP CODES	ACADEMIC YEAR AND LEVEL														
		2005-2006			2006-2007			2007-2008			2008-2009			2009-2010		
		U	M	D	U	M	D	U	M	D	U	M	D	U	M	D
<b>GENERAL ENGINEERING</b>																
General Engineering	14010100	---	8	---	---	11	---	---	11	---	---	12	---	---	6	---
<b>CHEMICAL ENGINEERING</b>																
Chemical Engineering	14070100	15	---	---	11	---	---	18	---	---	11	---	---	19	---	---
<b>CIVIL ENGINEERING</b>																
Civil Engineering	14080100	8	---	---	10	---	---	10	---	---	16	---	---	9	---	---
<b>COMPUTER SCIENCE</b>																
Computer Science	11010100	6	4	---	13	1	---	9	0	---	7	---	---	12	---	---
Computer Information Systems	11040100	---	2	---	---	1	---	---	3	---	---	5	---	---	7	---
<b>ELECTRICAL ENGINEERING</b>																
Computer Engineering	14090100	1	---	---	0	---	---	2	---	---	3	---	---	3	---	---
Electrical Engineering	14100100	39	1	0	32	3	1	30	10	1	38	4	2	34	3	
<b>ENGINEERING TECHNOLOGY</b>																
Computer Aided Drafting and Design	15130100	0	---	---	1	---	---	0	---	---	---	---	---	---	---	---
Computer Engineering Technology	15120100	25	---	---	26	---	---	16	---	---	15	---	---	15	---	---
Electrical Engineering Technology	15030300	24	---	---	18	---	---	6	---	---	7	---	---	3	---	---
<b>MECHANICAL ENGINEERING</b>																
Mechanical Engineering	14190100	16	---	---	17	---	---	13	---	---	17	---	---	28	---	---
<b>TOTALS</b>		<b>134</b>	<b>15</b>	<b>0</b>	<b>128</b>	<b>16</b>	<b>0</b>	<b>104</b>	<b>24</b>	<b>1</b>	<b>114</b>	<b>21</b>	<b>2</b>	<b>123</b>	<b>16</b>	

College of Juvenile Justice & Psychology

DEPARTMENT AND PROGRAM	CIP CODES	ACADEMIC YEAR AND LEVEL														
		2005-2006			2006-2007			2007-2008			2008-2009			2009-2010		
		U	M	D	U	M	D	U	M	D	U	M	D	U	M	D
<b>JUVENILE JUSTICE</b>																
Criminal Justice	43010400	55	---	---	50	---	---	54	---	---	42	---	---	---	---	---
Juvenile Justice	43019920	9	4	1	15	2	5	13	3	9	24	1	8	49	9	1
Criminal Justice - Juvenile Justice	43019920	---	---	---	---	---	---	---	---	---	---	---	---	14	---	---
<b>PSYCHOLOGY</b>																
Juvenile Forensic Psychology	42260100	---	15	---	---	14	---	---	10	---	---	10	---	---	4	---
Psychology	42010100	40	---	---	47	---	---	48	---	---	51	---	---	55	---	---
<b>TOTALS</b>		<b>104</b>	<b>19</b>	<b>---</b>	<b>112</b>	<b>16</b>	<b>5</b>	<b>115</b>	<b>13</b>	<b>9</b>	<b>117</b>	<b>11</b>	<b>8</b>	<b>118</b>	<b>13</b>	<b>1</b>

Note: Degree periods include fall of beginning year (December graduation), spring (May graduation) and summer (August graduation) of ending year.

Source: Texas Higher Education Coordinating Board PREP Online

## Total Faculty Headcount

Fall 2006 - Fall 2010

*Table Fac-1*  
*Full-Time Equivalents*

TOTAL HEADCOUNT/ FULL-TIME EQUIVALENTS	FALL SEMESTERS				
	2006	2007	2008	2009	2010
Total Faculty Headcount	484	487	507	503	501
Total Faculty FTE	389	419	439	440	439

*FTE by Rank*

LEVEL	FALL SEMESTERS									
	2006		2007		2008		2009		2010	
	(N)	(%)	(N)	(%)	(N)	(%)	(N)	(%)	(N)	(%)
Professor	49	13	58	14	63	14	62	14	66	15
Associate Professor	66	17	75	18	81	18	81	18	91	21
Assistant Professor	86	22	85	20	80	18	69	16	58	13
Instructor	2	1	2	0	2	*	2	*	2	0
Lecturer/Other Faculty	178	46	194	46	206	47	221	50	217	49
Teaching Assistant	7	2	6	1	7	2	5	1	5	1
<b>TOTALS</b>	<b>389</b>		<b>419</b>		<b>439</b>		<b>440</b>		<b>439</b>	

Source: Texas Higher Education Coordinating Board - PREP online

## Faculty Headcount

Fall 2006 - Fall 2010

Table Fac-2

*Total by Rank*

RANK	FALL SEMESTERS									
	2006		2007		2008		2009		2010	
	(N)	(%)	(N)	(%)	(N)	(%)	(N)	(%)	(N)	(%)
Professor	65	13	58	12	64	13	64	13	68	14
Associate Professor	71	15	77	16	82	16	81	16	91	18
Assistant Professor	88	18	87	18	82	16	70	14	59	12
Instructor	2	*	2	*	2	*	2	*	2	0
Teaching Assistant	14	3	11	2	13	3	8	2	10	2
Other	244	50	252	52	264	52	278	55	271	54
<b>TOTALS</b>	<b>484</b>		<b>487</b>		<b>507</b>		<b>503</b>		<b>501</b>	

*Total by Ethnicity*

ETHNICITY	FALL SEMESTERS									
	2006		2007		2008		2009		2010	
	(N)	(%)	(N)	(%)	(N)	(%)	(N)	(%)	(N)	(%)
Black/Non-Hispanic	291	57	298	59	300	60	307	61	291	58
White/Non-Hispanic	105	21	100	20	106	21	95	19	100	20
Hispanic	15	3	10	2	13	3	15	3	18	4
Asian or Pacific Islander	63	12	67	13	64	13	62	12	71	14
Am. Indian or Alaskan Native	0	*	1	*	0	*	0	*	0	0
International	10	2	11	2	20	4	21	4	21	4
Unknown	0	0	0	0	0	0	3	1	0	0
<b>TOTALS</b>	<b>484</b>		<b>487</b>		<b>507</b>		<b>503</b>		<b>501</b>	

*Total by Gender*

GENDER	FALL SEMESTERS									
	2006		2007		2008		2009		2010	
	(N)	(%)	(N)	(%)	(N)	(%)	(N)	(%)	(N)	(%)
Male	303	63	294	60	291	57	213	42	297	59
Female	181	37	193	40	216	43	290	58	204	41
<b>TOTALS</b>	<b>484</b>		<b>487</b>		<b>507</b>		<b>503</b>		<b>501</b>	

Source: Texas Higher Education Coordinating Board - PREP online

\* Denotes less than one percent. Percent columns show rounded figures and may not total 100%.

Total by Ethnicity chart-4 unknown added to total.

## Faculty Headcount (Other)

Fall 2006 - Fall 2010

Table Fac-3

### Tenure Status

TENURE STATUS	FALL SEMESTERS									
	2006		2007		2008		2009		2010	
	(N)	(%)	(N)	(%)	(N)	(%)	(N)	(%)	(N)	(%)
Tenured	119	25	116	24	132	26	138	27	148	30
On Tenure Track *	107	22	108	22	98	19	79	16	72	14
Non-Tenured	258	53	263	54	277	55	286	57	281	56
<b>TOTALS</b>	<b>484</b>		<b>487</b>		<b>507</b>		<b>503</b>		<b>501</b>	

### On Tenure Track by Rank

RANK	FALL SEMESTERS									
	2006		2007		2008		2009		2010	
	(N)	(%)	(N)	(%)	(N)	(%)	(N)	(%)	(N)	(%)
Professor	0	*	2	*	1	1	1	1	2	3
Associate Professor	19	18	19	18	17	17	13	16	11	15
Assistant Professor	86	80	85	79	78	80	63	80	57	79
Instructor	2	2	2	2	2	2	2	3	2	3
<b>TOTALS</b>	<b>107</b>		<b>108</b>		<b>98</b>		<b>79</b>		<b>72</b>	

### Teaching Function Percentage

TEACHING FUNCTION PERCENTAGE	FALL SEMESTERS									
	2006		2007		2008		2009		2010	
	(N)	(%)	(N)	(%)	(N)	(%)	(N)	(%)	(N)	(%)
Less Than 25%	20	4	20	4	23	5	7	1	9	2
25% to 49%	45	9	55	11	73	14	50	10	42	8
50% to 74%	82	17	88	18	126	25	49	10	52	10
75% to 89%	27	6	34	7	77	15	9	2	13	3
90% to 100%	310	64	290	60	208	41	388	77	385	77
<b>TOTALS</b>	<b>484</b>		<b>487</b>		<b>507</b>		<b>503</b>		<b>501</b>	

\* Denotes less than one percent. Percent columns show rounded figures and may not total 100%.

Source: Texas Higher Education Coordinating Board - PREP online

## Tenured Faculty Fall 2006 - Fall 2010

*Table Fac-4  
Tenured by Rank*

RANK	FALL SEMESTERS									
	2006		2007		2008		2009		2010	
	(N)	(%)	(N)	(%)	(N)	(%)	(N)	(%)	(N)	(%)
Professor	65	55	56	48	63	48	63	46	66	45
Associate Professor	52	44	58	50	65	49	68	49	80	54
Assistant Professor	2	2	2	2	4	3	7	5	2	1
Instructor	0	*	0	*	0	*	0	*	0	0
<b>TOTALS</b>	<b>119</b>		<b>116</b>		<b>132</b>		<b>138</b>		<b>148</b>	

*Tenured by Ethnicity*

ETHNICITY	FALL SEMESTERS									
	2006		2007		2008		2009		2010	
	(N)	(%)	(N)	(%)	(N)	(%)	(N)	(%)	(N)	(%)
Black/Non-Hispanic	79	66	72	62	74	56	78	57	79	53
White/Non-Hispanic	12	10	15	13	20	15	17	12	22	15
Hispanic	1	1	1	1	3	2	3	2	3	2
Asian or Pacific Islander	26	22	26	22	26	20	30	22	36	24
Am. Indian or Alaskan Native	0	*	0	*	0	*	0	*	0	0
International	1	1	2	2	7	5	10	7	8	5
Unknown	0	*	0	*	2	2	0	0	0	0
<b>TOTALS</b>	<b>119</b>		<b>116</b>		<b>132</b>		<b>138</b>		<b>148</b>	

*Tenured by Gender*

GENDER	FALL SEMESTERS									
	2006		2007		2008		2009		2010	
	(N)	(%)	(N)	(%)	(N)	(%)	(N)	(%)	(N)	(%)
Male	94	79	90	78	99	75	104	75	111	75
Female	25	21	26	22	33	25	34	25	37	25
<b>TOTALS</b>	<b>119</b>		<b>116</b>		<b>132</b>		<b>138</b>		<b>148</b>	

Source: Texas Higher Education Coordinating Board - PREP online

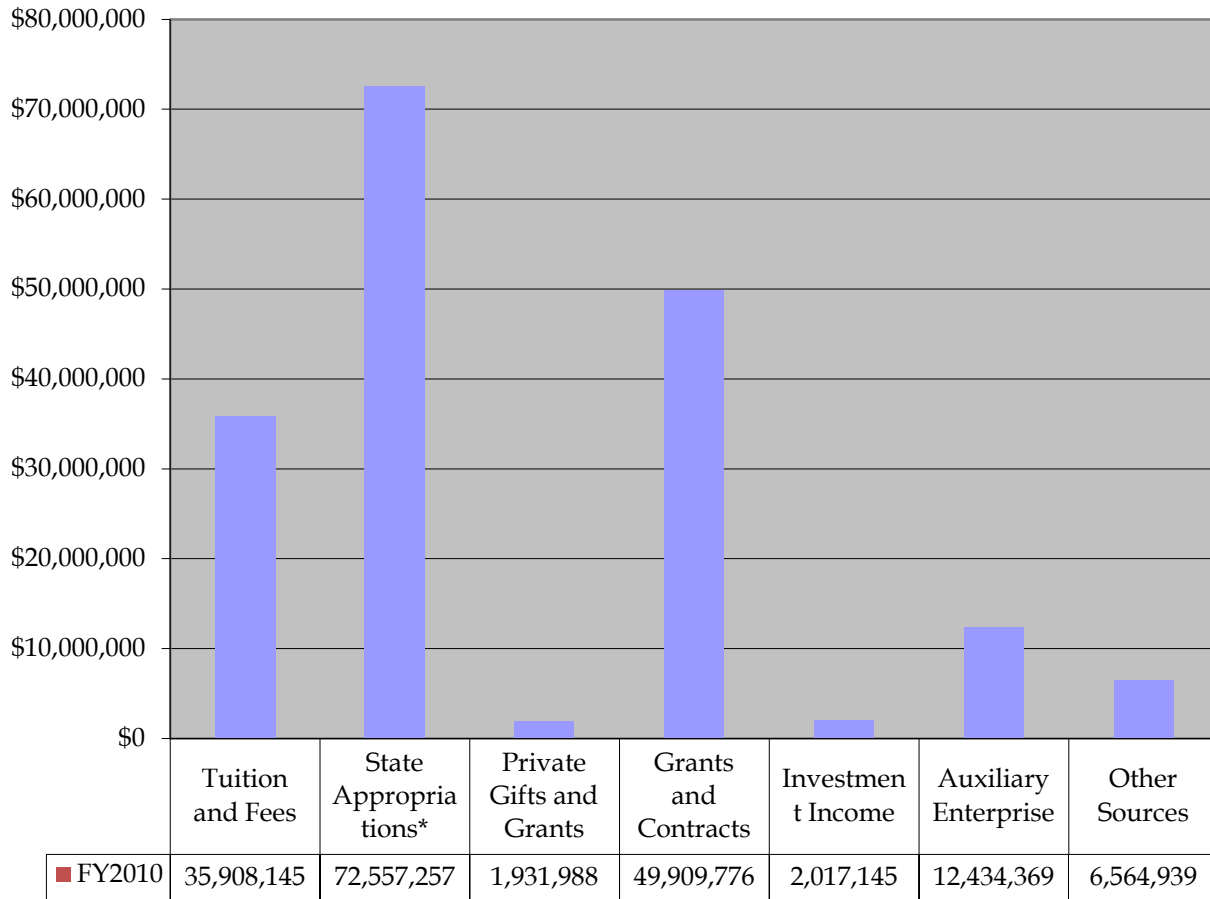
\* Denotes less than one percent. Percent columns show rounded figures and may not total 100%.

Note: In 1996, the Coordinating Board changed the definitions of the top four ranks to include only tenured or tenure-track faculty.

The category "Other" was modified in 1996 to include faculty without tenure and not on tenure track including but not limited to adjunct, special, visiting, emeritus, and lecturer at PVAMU. "Other" also includes faculty with tenure or on tenure track from another institution.

## Current Funds Revenues and Transfers Fiscal Year 2010

Chart Fis-1



*Note: Fiscal Year begins on September 1, 2008 and ends on August 31, 2009.*

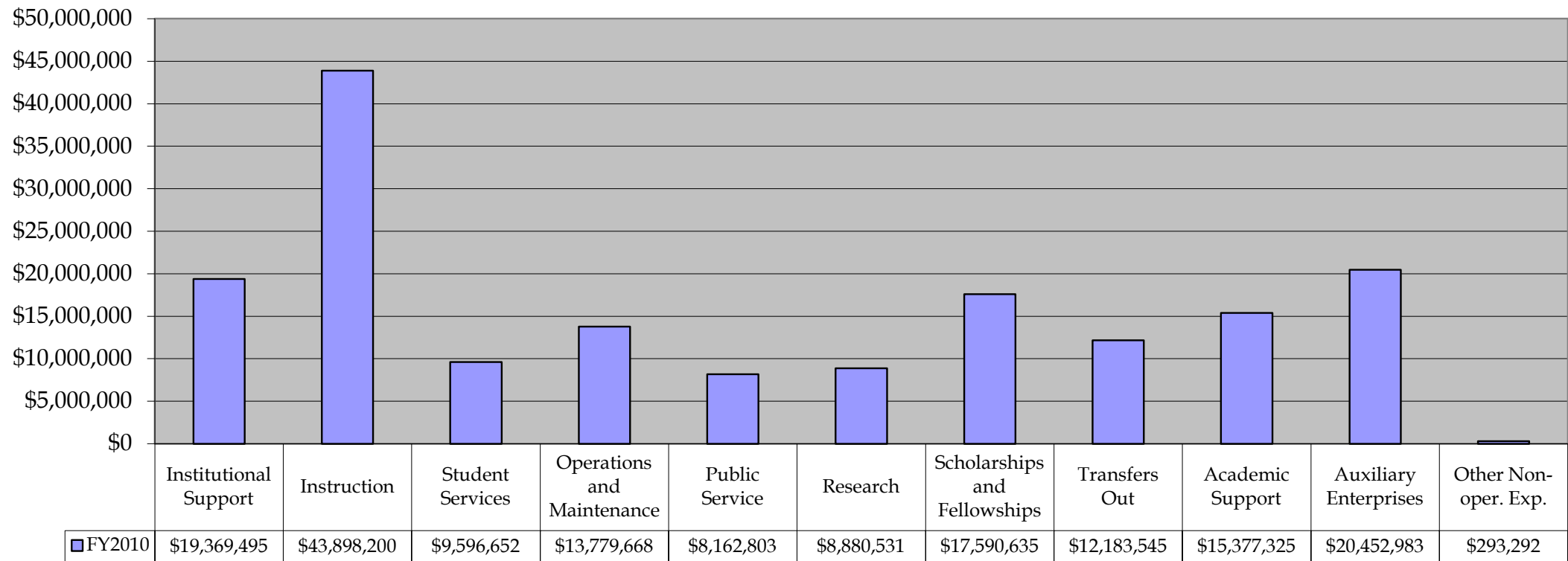
*Current funds are the operating funds of the institution, normally to be expended in one fiscal year for teaching, research and service activities. Current funds generally include restricted and unrestricted funds, with the unrestricted funds carrying special importance for flexibility in reallocations.*

Source: IPEDS

\* Includes AUF transferred from the Texas A&M University System

## Current Funds Expenditures and Transfers Fiscal Year 2010

Chart Fis-2



Note: Fiscal Year begins on September 1, 2008 and ends on August 31, 2009.

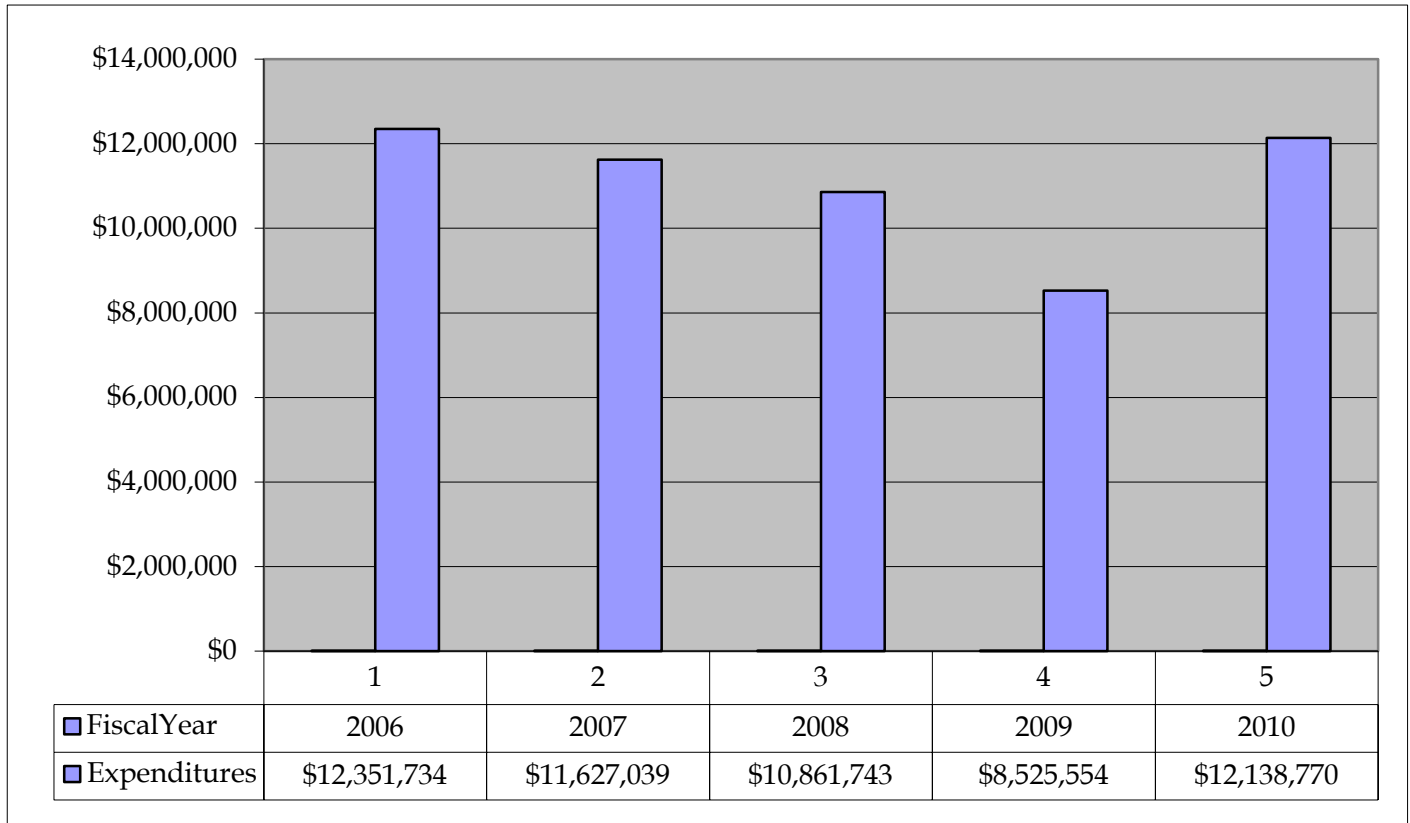
Current funds are the operating funds of the institution, normally to be expended in one fiscal year for teaching, research and service activities. Current funds generally include restricted and unrestricted funds, with the unrestricted funds carrying special importance for flexibility in reallocations.

Source: IPEDS

## Funded Research Expenditures

Fiscal Years 2006 through 2010

Chart Fis-3



Note: Fiscal Years begin on September 1st and end on August 31st.

Source: IPEDS

## Total Full-Time Staff by Occupational Activity

### Fall 2006 - Fall 2010

Table/Chart Staff-1

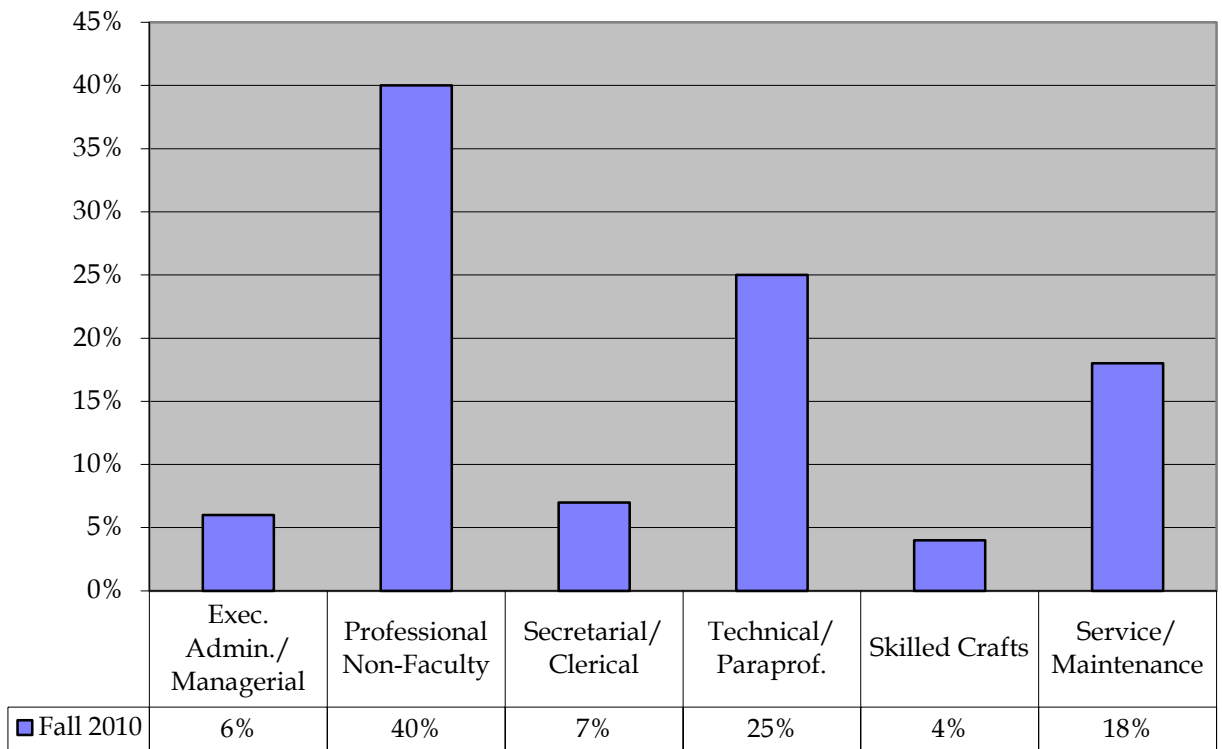
OCCUPATIONAL ACTIVITY	FALL SEMESTERS									
	2006		2007		2008		2009		2010	
	(N)	(%)	(N)	(%)	(N)	(%)	(N)	(%)	(N)	(%)
Executive Admin./Managerial	64	9	66	9	44	10	45	6	44	6
Professional Non-Faculty	332	46	314	46	302	43	277	40	275	38
Secretarial/Clerical	127	17	121	18	140	20	48	7	192	27
Technical/Paraprofessional	86	12	83	12	44	7	175	25	49	7
Skilled Crafts	6	1	5	1	26	4	27	4	29	4
Service/Maintenance	113	16	97	14	114	16	124	18	131	18
<b>TOTALS</b>	<b>728</b>		<b>686</b>		<b>670</b>		<b>696</b>		<b>720</b>	

Note: Percent columns show rounded figures and may not total 100%.

The above figures do not include vendors and contract personnel

Sources: Texas State Auditor's Office, Quarterly FTE Report

### Fall 2010



## Total Full-Time Staff by Gender

### Fall 2006- Fall 2010

Table/Chart Staff-2

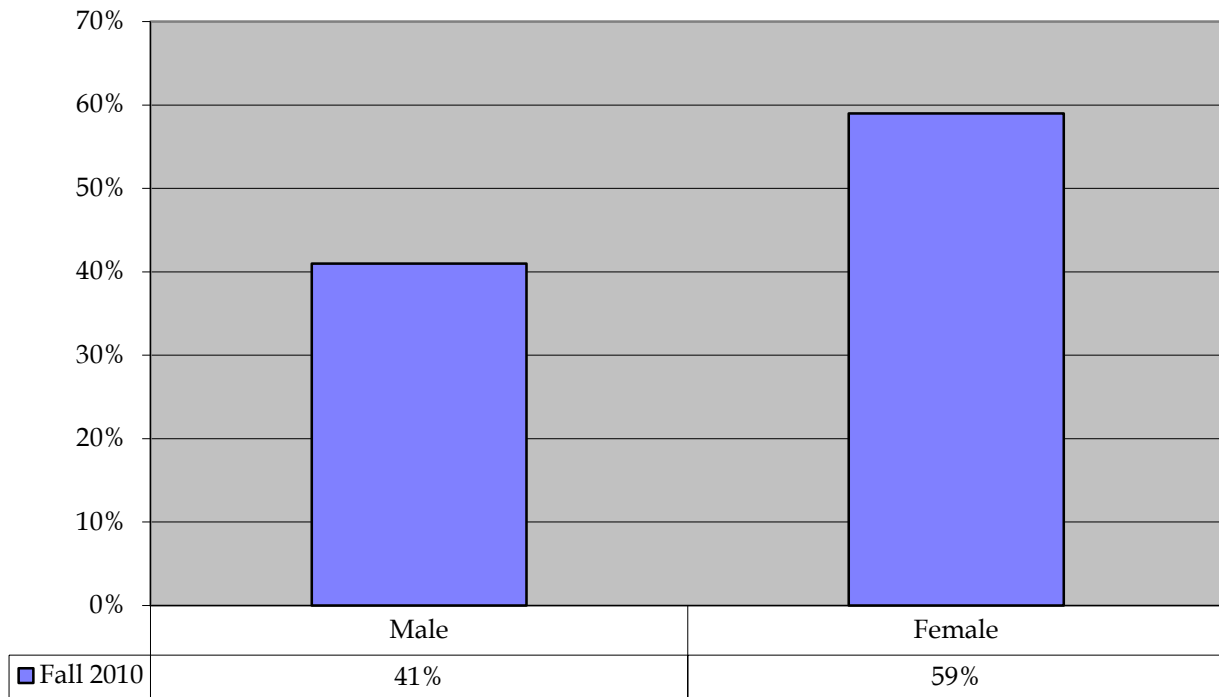
GENDER	FALL SEMESTERS									
	2006		2007		2008		2009		2010	
	(N)	(%)	(N)	(%)	(N)	(%)	(N)	(%)	(N)	(%)
Male	313	43	285	42	271	40	288	41	294	41
Female	415	57	401	58	399	60	408	59	427	59
<b>TOTALS</b>	<b>728</b>		<b>686</b>		<b>670</b>		<b>696</b>		<b>721</b>	

Note: Percent columns show rounded figures and may not total 100%.

The above figures do not include vendors and contract personnel

Sources: Texas State Auditor's Office, Quarterly FTE Report

### Fall 2010



## Total Full-Time Staff by Ethnicity

### Fall 2006- Fall 2010

Table/Chart Staff-3

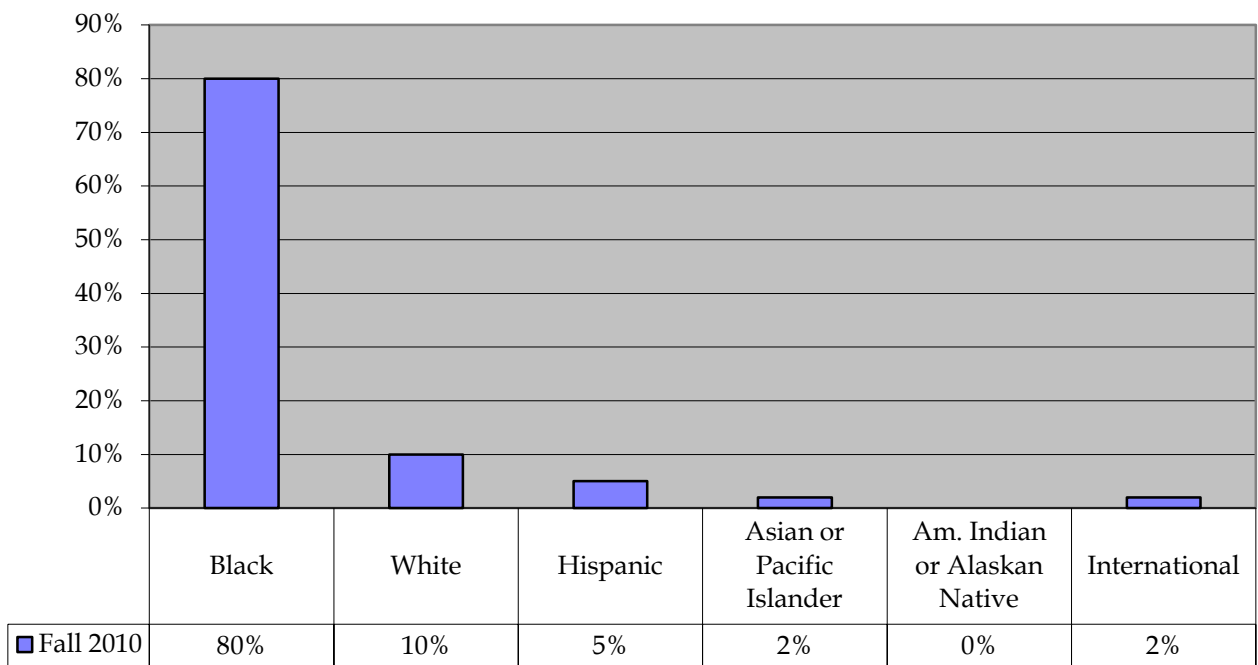
ETHNICITY	FALL SEMESTERS									
	2006		2007		2008		2009		2010	
	(N)	(%)	(N)	(%)	(N)	(%)	(N)	(%)	(N)	(%)
Black/Non-Hispanic	592	81	552	80	533	80	554	80	575	80
White/Non-Hispanic	69	9	69	10	67	10	72	10	69	10
Hispanic	39	5	35	5	38	6	36	5	42	6
Asian or Pacific Islander	28	4	30	4	14	2	16	2	15	2
Am. Indian or Alaskan Native	0	*	0	*	0	*		*	0	*
International	0	*	0	*	18	2	17	2	20	2
<b>TOTALS</b>	<b>728</b>		<b>686</b>		<b>670</b>		<b>695</b>		<b>721</b>	

\* Denotes less than one percent. Percent columns show rounded figures and may not total 100%.

The above figures do not include vendors and contract personnel, e.g. Bookstore and Information Technology

Sources: Texas State Auditor's Office, Quarterly FTE Report

### Fall 2010



## Total Library Holdings

### Academic Years 2006-2007 through 2009-2010

Table/Chart Lib-1

HOLDINGS	ACADEMIC YEARS							
	2006-2007		2007-2008		2008-2009		2009-2010	
	(N)	(%)	(N)	(%)	(N)	(%)	(N)	(%)
<b>Print Materials</b>								
Monographic Titles	367,311	32	372,474	32	381,128	32	383,731	32
Government Documents	33,594	3	36,298	3	38,817	3	38,817	3
<b>Print Subscriptions</b>								
Number of Subscriptions	7,564	1	7,580	1	7,580	1	7,283	1
<b>Non-Print Materials</b>								
ebooks	33,733	3	33,733	3	34,502	3	34,502	3
Microforms	706,024	61	708,072	61	709,799	60	711,070	60
Manuscripts and Archives		*		*	3,824	*	3,842	*
Cartographic Materials	6	*	6	*	6	*	6	*
Graphic Materials	0	*	0	*	0	*	0	*
Audio Materials	0	*	0	*	0	*	0	*
Films and Videos	3,067	*	3,148	*	3,222	*	3,242	*
Machine-Readable Materials	2,872	*	2,873	*	2,875	*	2,878	*
<b>TOTALS</b>	<b>1,154,171</b>		<b>1,164,184</b>		<b>1,181,753</b>		<b>1,185,371</b>	

\* Denotes less than one percent. Percent columns show rounded figures and may not total 100%.

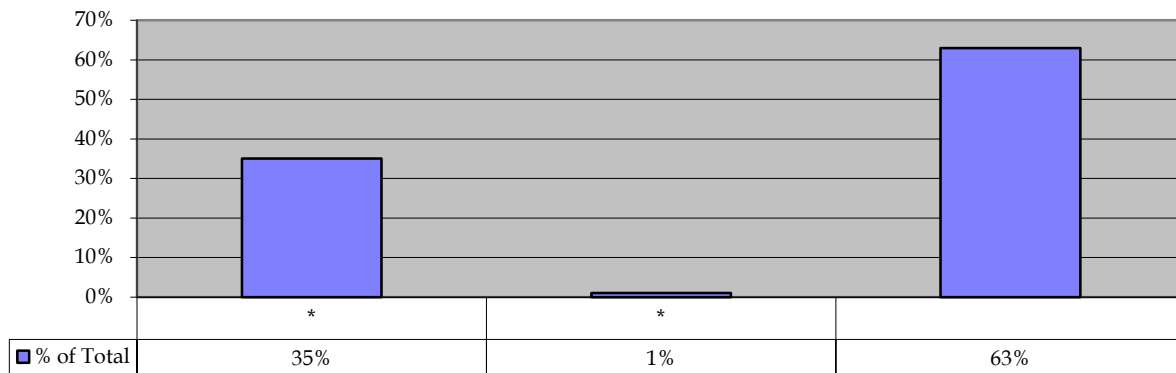
"Books and Periodicals" includes books, serial backfiles, and government documents that are cataloged.

"Subscriptions" includes current periodicals, newspapers, and government documents issued in successive parts usually at regular intervals.

"Non-Print Materials" includes materials that require magnification, materials that require a computer, typed materials, or handwritten materials.

Source: Prairie View A&M University, John B. Coleman Library.

### Total Holdings



# Library Services

## Academic Years 2006-2007 through 2009-2010

Table Lib-2

### Interlibrary Loans

SERVICES	ACADEMIC YEARS							
	2006-2007		2007-2008		2008-2009		2009-2010	
	(N)	%	(N)	%	(N)	%	(N)	%
<b>Circulation Transactions</b>								
General Collection	13,086	65	13,264	71	12,310	69	13,641	74
Reserve Collection	7,180	35	5,334	29	5,469	31	4,691	26
<b>TOTALS</b>	<b>20,266</b>		<b>18,598</b>		<b>17,779</b>		<b>18,332</b>	
<b>Interlibrary Loans</b>								
To Other Libraries	1,906	70	1,853	66	1,216	47	925	39
From Other Libraries	816	30	948	34	1,391	53	1,477	61
<b>TOTALS</b>	<b>2,722</b>		<b>2,801</b>		<b>2,607</b>		<b>2,402</b>	
<b>Information Services To Groups</b>								
People Served	5,296		6,498		4,154		4,134	
<b>Gate Count</b>								
Public Service Hours	95		97		97		97	
Gate Count	396,978		331,610		288,107		318,063	

"People Served" is the number of people who attended library instruction presentations held in the Library.

Source: Prairie View A&M University, John B. Coleman Library.

"Public Service Hours" is the number of hours per week that the Library is open.

"Gate Count" is the number of people physically entering the Library. Individuals can be counted more than once.

## Total Library Operating Expenditures

### Academic Years 2006-2007 through 2009-2010

Table/Chart Lib-3

EXPENSES	ACADEMIC YEARS			
	2006-2007	2007-2008	2008-2009	2009-2010
	(N)	(N)	(N)	(N)
Salaries and Wages	\$ 988,195	\$ 1,046,441	\$ 1,245,300	\$ 1,142,990
Collections	613,573	551,086	560,488	161,641
Current Serials	189,653	199,172	234,172	170,719
Microforms	27,798	29,295	31,100	25,545
Audiovisual Materials	16,133	7,668	11,303	2,071
Electronic Resources	580,416	732,989	686,963	706,926
Document Delivery and Interlibrary Loans	5,318	5,752	6,288	3,272
Staff Development	39,641	31,212	24,401	25,586
Preservation and Bindery	2,834	4,311	38,598	18,206
Furniture and Equipment	30,402	14,962	59,607	21,699
Contracted Computer Services	99,812	147,751	192,564	170,103
Renovation, 4th Floor	*	*	41,613	*
Limited Editions	*	*	*	*
Surveillance System	*	67,728	6,202	*
Carpet Replacement	*	*	*	269,468
Lecture Series, 4th Floor Program	10,529	5,153	3,762	5,153
All Other Operating Expenses	114,499	265,182	430,748	364,382
<b>TOTALS</b>	<b>\$ 2,718,803</b>	<b>\$ 3,108,702</b>	<b>\$ 3,573,109</b>	<b>\$ 3,087,761</b>

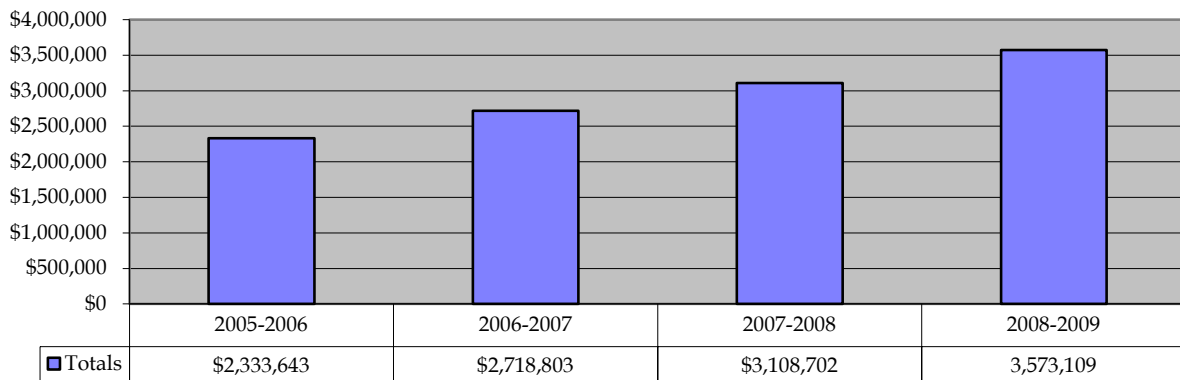
"Salaries/Wages" includes librarians, professional staff, student assistants, and all other paid staff. Excludes fringe benefits.

"Collections" includes books, serial backfiles, and other printed materials. Excludes current serials.

"Current Serials" excludes microforms, audiovisual, and machine-readable materials.

"Furniture/Equipment" includes computer equipment.

### Total Operating Expenditures



## Major Campus Buildings Fall 2010

Prairie View A&M University is located approximately 45 miles from downtown Houston, the fourth most populous city in the United States. The main 1500-acre campus is situated in the city of Prairie View in the heart of semi-rural Waller County. In addition to the main campus, the College of Nursing building is located in the heart of the world-renowned Texas Medical Center in Houston. Classes are also held at sites throughout the region, including the Cy-fair area, Northwest Houston Center in Houston, and the University Center in The Woodlands.

*Table Hou-1*

Building			
	Building Number	Year Opened	Gross Square Footage
Fry-Thomas Power Plant	529	1916	11,430
G. R. Woolfolk Soc & Pol Science	503	1932	16,540
Hilliard Hall-Communication	537	1939	38,346
W. R. Banks Building	508	1945	57,225
Alvin I. Thomas Administration Building	501	1949	19,588
Gilchrist Engineering	504	1952	23,213
Jesse M. Drew Memorial Complex	535	1955	11,058
L.O. Evans Building	556	1955	17,460
M.T. Harrington Science	668	1961	59,463
William J. "Billy" Nicks	669	1964	100,768
Hobart Thomas Taylor Sr. Hall	689	1976	100,158
Owens-Franklin Health Clinic	688	1977	36,397
C.L. Wilson Engineering Complex	704	1978	63,268
International Goat Research Center	707	1983	7,920
Austin Greaux Chemical Engineering	724	1984	12,934
Wilhelmina Delco (Education Building)	742	1986	58,422
Sam R. Collins Engineering Technology	743	1987	78,945
John B. Coleman Library	744	1988	149,095
E. E. O'Banion Science Building	790	2001	166,629
Willie A. Tempton Memorial Student Center	779	2003	126,083
Nathelyne Archie Kennedy Building	783	2005	103,421
Electrical Engineering Building	793	2005	48,787
Don K. Clark Building	789	2006	57,514
Nursing Building	833	2006	552,849
Northwest Houston Center		2009	52,000

*Source: Texas Higher Education Coordinating Board-Facilities Inventory*

Prepared by

**Office  
of  
Institutional Research & Effectiveness**

**Jesse M. Drew Memorial Complex, 2<sup>nd</sup> Floor  
P.O. Box 519, MS #1341  
Prairie View A&M University  
Prairie View, Texas 77446-0519**

**Phone:(936) 261-2188**

**Fax: (936) 261-2189**

**[IRE@pvamu.edu](mailto:IRE@pvamu.edu)**

**Dr. Dean Williamson, Director**

**Dr. Ruby Stevens-Morgan, Assistant Director**

**Dr. Latrice Rideout, Institutional Effectiveness Specialist**

**Ginger Philips, Research Assistant**

**Dr. Ming Kuo, Data Technician**

**Tracy Simms, MBA, Data Technician**

**Rebecca Opamen, Data Technician**

## Notes and References

- 1- Juvenile Justice:** The College of Juvenile Justice and Psychology split into two departments effective Fall 2006.
- 2- Civil Engineering:** Renamed Civil and Environmental Engineering effective Fall 2005.