

Prairie View A&M University

*HAVE YOU ALWAYS
WONDERED WHAT IT
WOULD BE LIKE TO
TRAVEL THE WORLD?*

NOW'S THE TIME!!!

STUDY ABROAD and
learn what the **WORLD** can
offer **YOU!**

**COURSE CREDITS
AVAILABLE**

**WORRIED ABOUT THE
COST?**

Scholarships are available!

Join a trip hosted by Prairie
View or find an outside
program that is of interest
to you and travel the world!



**EXPERIENCE
LIFE
OVERSEAS!**

INTERNATIONAL STUDENT STUDY ABROAD SCHOLARSHIPS Offered through *PVAMU!!!!*

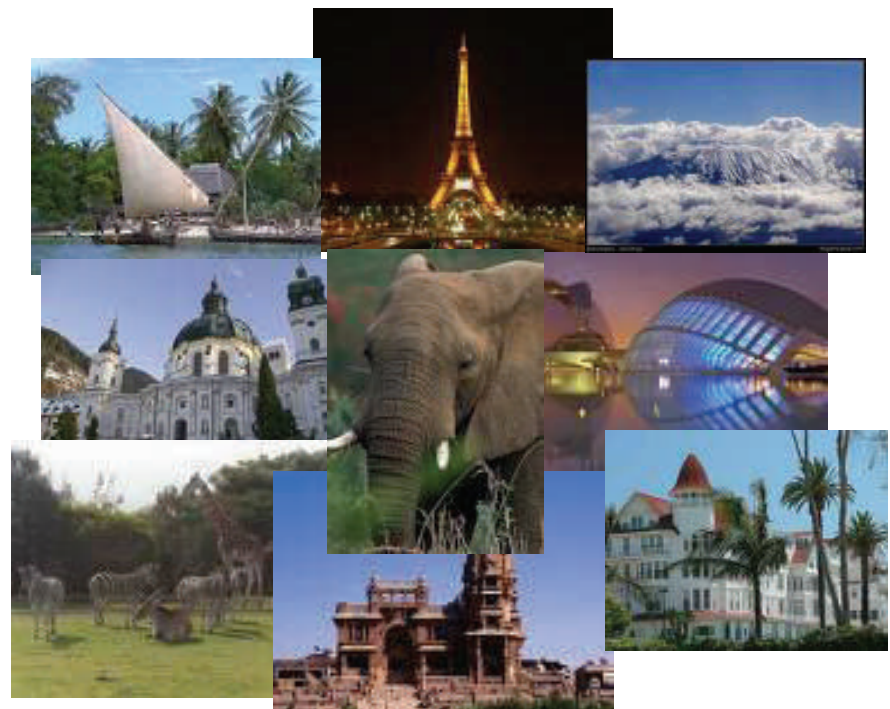
**APPLICATION DEADLINE:
OCTOBER 30, 2009**

Application packets may be picked-up in the
**Division of Social Work, Behavioral & Political Sciences
Room 102, George R. Woolfolk Building**

If you have applied already, please make sure your application is complete.

For additional information, please contact:

Dr. Walle Engedayehu at (936) 261-3200 or
via email at waengedayehu@pvamu.edu



STUDY ABROAD!!!